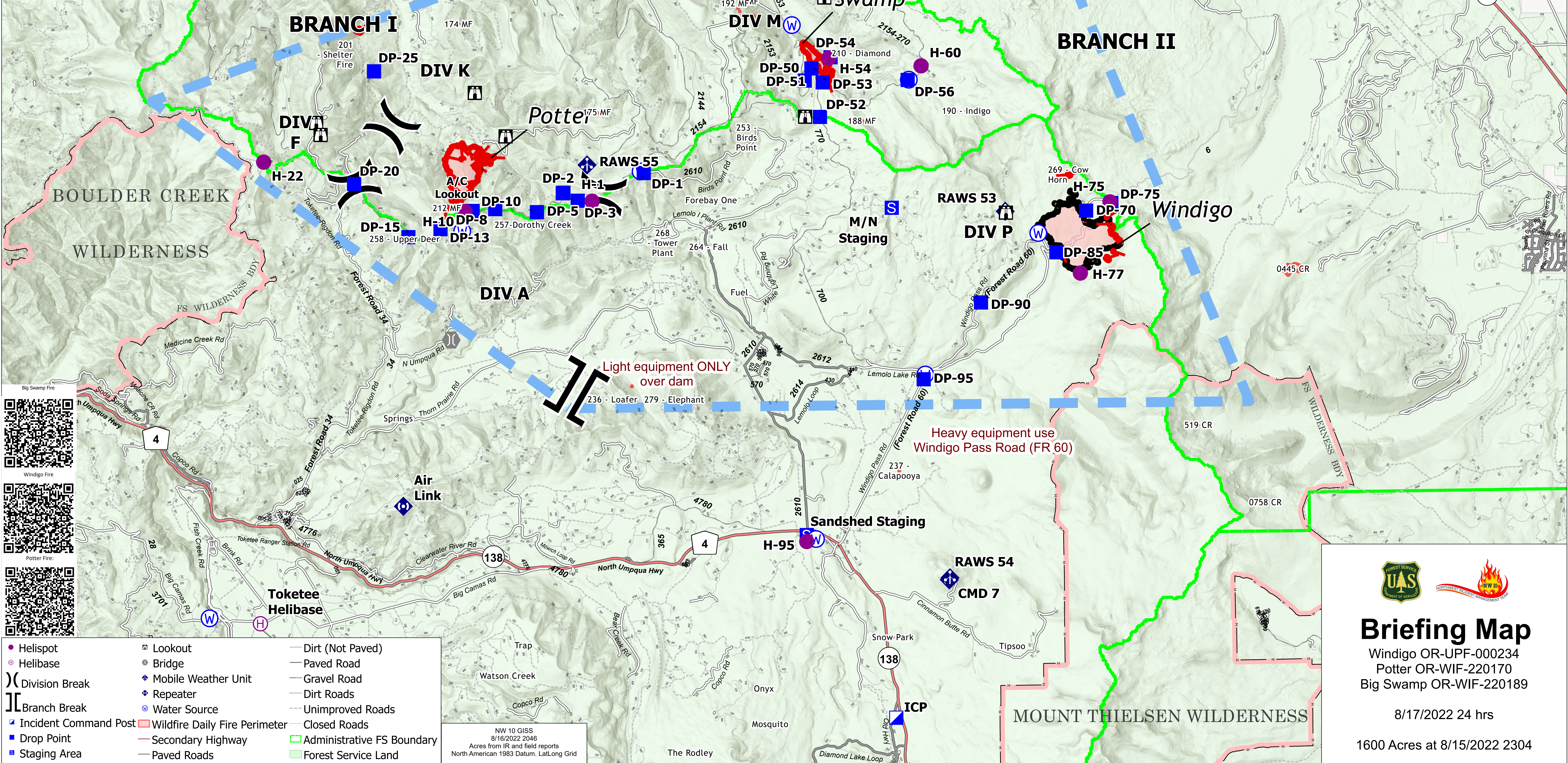



Incident # - Name	Acres	DDMLat	DDMLon	Jurisdiction
237 - Calapooya	0.25	43° 16.686N	122° 7.935W	Umpqua National Forest
279 - Elephant	0.1	43° 18.152N	122° 14.124W	Umpqua National Forest
236 - Loafer	0.25	43° 18.431N	122° 15.294W	Umpqua National Forest
264 - Fall	0.1	43° 21.229N	122° 13.140W	Umpqua National Forest
268 - Tower Plant	0.1	43° 21.320N	122° 14.406W	Umpqua National Forest
258 - Upper Deer	0.5	43° 21.441N	122° 21.540W	Umpqua National Forest
257 - Dorothy Creek	0.8	43° 21.677N	122° 18.294W	Umpqua National Forest
235 - Four Bay One	0.1	43° 22.158N	122° 13.044W	Umpqua National Forest
269 - Cow Horn	0.6	43° 22.598N	122° 03.109W	Umpqua National Forest
253 - Birds Point	0.1	43° 23.428N	122° 12.060W	Umpqua National Forest
188 MF	0.5	43° 23.739N	122° 08.968W	Willamette National Forest
190 - Indigo	0.25	43° 23.920N	122° 05.982W	Willamette National Forest
175 MF	0.1	43° 23.950N	122° 16.194W	Willamette National Forest
174 MF	0.1	43° 25.754N	122° 20.004W	Willamette National Forest
192 MF	0.5	43° 25.880N	122° 11.838W	Willamette National Forest
194 MF	0.1	43° 25.970N	122° 12.216W	Willamette National Forest
193 MF	0.1	43° 26.030N	122° 12.264W	Willamette National Forest
178 - Emigrant Butte	1.5	43° 26.711N	122° 09.570W	Willamette National Forest
210 - Diamond	0.1	43° 25.104N	122° 9.354W	Willamette National Forest
212	0.5	43° 22.048N	122° 20.355W	Willamette National Forest
187 - Paddy Valley	n/a	43° 26.720N	122° 9.575W	Willamette National Forest
519 -	n/a	43° 17.534N	122° 59.670W	Deschutes National Forest
0445 CR - Toll Mt.	45	43° 20.663N	121° 57.005W	Deschutes National Forest
265 - Fuel	0.1	43° 20.304N	121° 12.300W	Deschutes National Forest





## Briefing Map

Windigo OR-UPF-000234  
Potter OR-WIF-220170  
Big Swamp OR-WIF-220189

8/17/2022 24 hrs

1600 Acres at 8/15/2022 2304

NW 10 GIS  
8/16/2022 2046  
Acres from IR and field reports  
North American 1983 Datum, Lat/Long Grid