

Pilot Map

Windigo
OR-UPF-000234
1007 acres

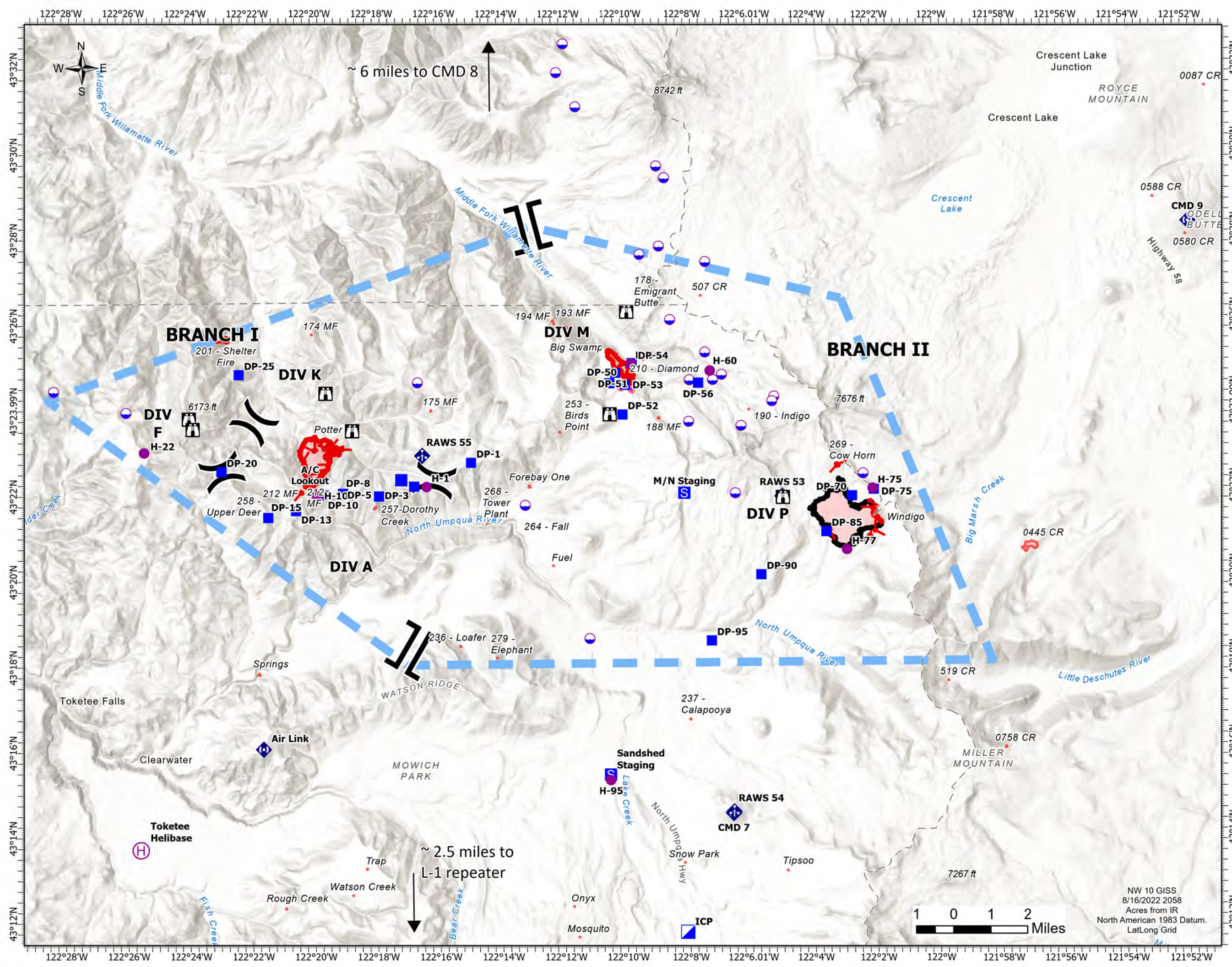
Potter
OR-WIF-220170
472 acres

Big Swamp
OR-WIF-220189
121 acres

Acres at 8/15/2022 2304

8/17/2022 24 hrs

- Dip Site
- Helispot
- Helibase
- Division Break
- Branch Break
- Incident Command Post
- Drop Point
- Staging Area
- Lookout
- Mobile Weather Unit
- Repeater
- Retardant Drop
- Temporary Flight Restriction
- Wildfire Daily Fire Perimeter



NW 10 GISS
8/16/2022 2058
Acres from IR
North American 1983 Datum.
LatLong Grid

Incident Name	FC Point Type	Label	Latitude WGS84 DDM	Longitude WGS84 DDM
Big Swamp	Dip Site		43° 27.570' N	122° 09.447' W
Big Swamp	Dip Site		43° 29.359' N	122° 08.635' W
Big Swamp	Dip Site		43° 29.638' N	122° 08.886' W
Big Swamp	Dip Site		43° 31.041' N	122° 11.477' W
Big Swamp	Dip Site		43° 31.845' N	122° 12.085' W
Big Swamp	Dip Site		43° 32.516' N	122° 11.860' W
Big Swamp	Dip Site		43° 27.388' N	122° 07.341' W
Big Swamp	Dip Point	DP-52	43° 23.826' N	122° 10.028' W
Big Swamp	Dip Point	DP-50	43° 24.561' N	122° 10.439' W
Big Swamp	Dip Point	DP-56	43° 24.553' N	122° 07.593' W
Big Swamp	Dip Point	DP-54	43° 25.027' N	122° 09.718' W
Big Swamp	Dip Point	DP-53	43° 24.522' N	122° 09.941' W
Big Swamp	Dip Point	DP-51	43° 24.806' N	122° 10.253' W
Big Swamp	Helispot	H-60	43° 24.835' N	122° 07.219' W
Big Swamp	Helispot	H-54	43° 25.015' N	122° 09.761' W
Big Swamp	Dip Site		43° 24.223' N	122° 05.169' W
Big Swamp	Dip Site		43° 24.113' N	122° 05.237' W
Big Swamp	Dip Site		43° 23.543' N	122° 06.234' W
Big Swamp	Dip Site		43° 23.651' N	122° 07.910' W
Big Swamp	Dip Site		43° 24.623' N	122° 07.878' W
Big Swamp	Dip Site		43° 25.269' N	122° 07.372' W
Big Swamp	Dip Site		43° 26.037' N	122° 08.487' W
Big Swamp	Dip Site		43° 24.744' N	122° 06.844' W
Big Swamp	Dip Site		43° 24.624' N	122° 07.130' W
Potter	Dip Site		43° 24.610' N	122° 16.618' W
Potter	Dip Point	DP-10	43° 21.994' N	122° 19.652' W
Potter	Dip Point	DP-20	43° 22.556' N	122° 22.924' W
Potter	Dip Point	DP-2	43° 22.346' N	122° 17.139' W

Incident Name	FC Point Type	Label	Latitude WGS84 DDM	Longitude WGS84 DDM
Potter	Dip Point	DP-25	43° 24.824' N	122° 22.349' W
Potter	Dip Point	DP-8	43° 22.027' N	122° 19.028' W
Potter	Dip Point	DP-1	43° 22.728' N	122° 14.915' W
Potter	Dip Point	DP-13	43° 21.632' N	122° 20.544' W
Potter	Dip Point	DP-15	43° 21.476' N	122° 21.434' W
Potter	Dip Point	DP-5	43° 21.959' N	122° 17.876' W
Potter	Dip Point	DP-3	43° 22.182' N	122° 16.745' W
Potter	Helibase	Helibase	43° 13.705' N	122° 25.595' W
Potter	Helispot	H-1	43° 22.171' N	122° 16.349' W
Potter	Helispot	H-22	43° 23.009' N	122° 25.418' W
Potter	Helispot	H-10	43° 21.984' N	122° 19.864' W
Potter	Staging Area		43° 22.335' N	122° 17.158' W
Windigo	Dip Point	DP-90	43° 20.052' N	122° 05.632' W
Windigo	Dip Point	DP-70	43° 21.880' N	122° 02.699' W
Windigo	Helispot	H-75	43° 22.050' N	122° 02.037' W
Windigo	Helispot	H-77	43° 20.623' N	122° 02.878' W
Windigo	Helispot	H-95	43° 15.270' N	122° 10.509' W
Windigo	Staging Area	Sandshed Staging	43° 15.401' N	122° 10.507' W
Windigo	Dip Site		43° 21.966' N	122° 06.437' W
Windigo	Dip Site		43° 18.588' N	122° 11.153' W
Windigo	Dip Site		43° 21.720' N	122° 13.187' W
Windigo	Dip Site		43° 24.450' N	122° 28.307' W
Windigo	Dip Site		43° 23.946' N	122° 25.991' W
Windigo	Dip Site		43° 22.401' N	122° 02.337' W
Windigo	Dip Point	DP-85	43° 21.047' N	122° 03.534' W
Windigo	Dip Point	DP-75	43° 22.027' N	122° 02.000' W
Windigo	Staging Area	M/N Staging	43° 21.980' N	122° 08.070' W

Incident # - Name	Acres	DMLat	DMLon	Jurisdiction	Incident # - Name	Acres	DMLat	DMLon	Jurisdiction
237 - Calapooya	0.25	43° 16.686N	122° 7.935W	Umpqua National Forest	175 MF	0.1	43° 23.950N	122° 16.194W	Willamette National Forest
279 - Elephant	0.1	43° 18.152N	122° 14.124W	Umpqua National Forest	174 MF	0.1	43° 25.754N	122° 20.004W	Willamette National Forest
236 - Loafer	0.25	43° 18.431N	122° 15.294W	Umpqua National Forest	192 MF	0.5	43° 25.880N	122° 11.838W	Willamette National Forest
264 - Fall	0.1	43° 21.229N	122° 13.140W	Umpqua National Forest	194 MF	0.1	43° 25.970N	122° 12.216W	Willamette National Forest
268 - Tower Plant	0.1	43° 21.320N	122° 14.406W	Umpqua National Forest	193 MF	0.1	43° 26.030N	122° 12.264W	Willamette National Forest
258 - Upper Deer	0.5	43° 21.441N	122° 21.540W	Umpqua National Forest	178 - Emigrant Butte	1.5	43° 26.711N	122° 09.570W	Willamette National Forest
257 - Dorothy Creek	0.8	43° 21.677N	122° 18.294W	Umpqua National Forest	210 - Diamond	0.1	43° 25.104N	122° 9.354W	Willamette National Forest
235 - Four Bay One	0.1	43° 22.156N	122° 13.044W	Umpqua National Forest	212 -	0.5	43° 22.048N	122° 20.355W	Willamette National Forest
269 - Cow Horn	0.6	43° 22.598N	122° 03.108W	Umpqua National Forest	187 - Paddy Valley	n/a	43° 26.720N	122° 9.575W	Willamette National Forest
253 - Birds Point	0.1	43° 23.428N	122° 12.060W	Umpqua National Forest	519 -	n/a	43° 17.534N	122° 59.670W	Deschutes National Forest
188 MF	0.5	43° 23.739N	122° 08.868W	Willamette National Forest	0445 CR - Toll Mt.	45	43° 20.663N	121° 57.005W	Deschutes National Forest
190 - Indigo	0.25	43° 23.920N	122° 05.982W	Willamette National Forest	265 - Fuel	0.1	43° 20.304N	121° 12.300W	Umpqua National Forest