

Communications

Windigo
OR-UPF-000234
Approx. 1007 ac

Potter
OR-WIF-220170
Approx. 500 ac

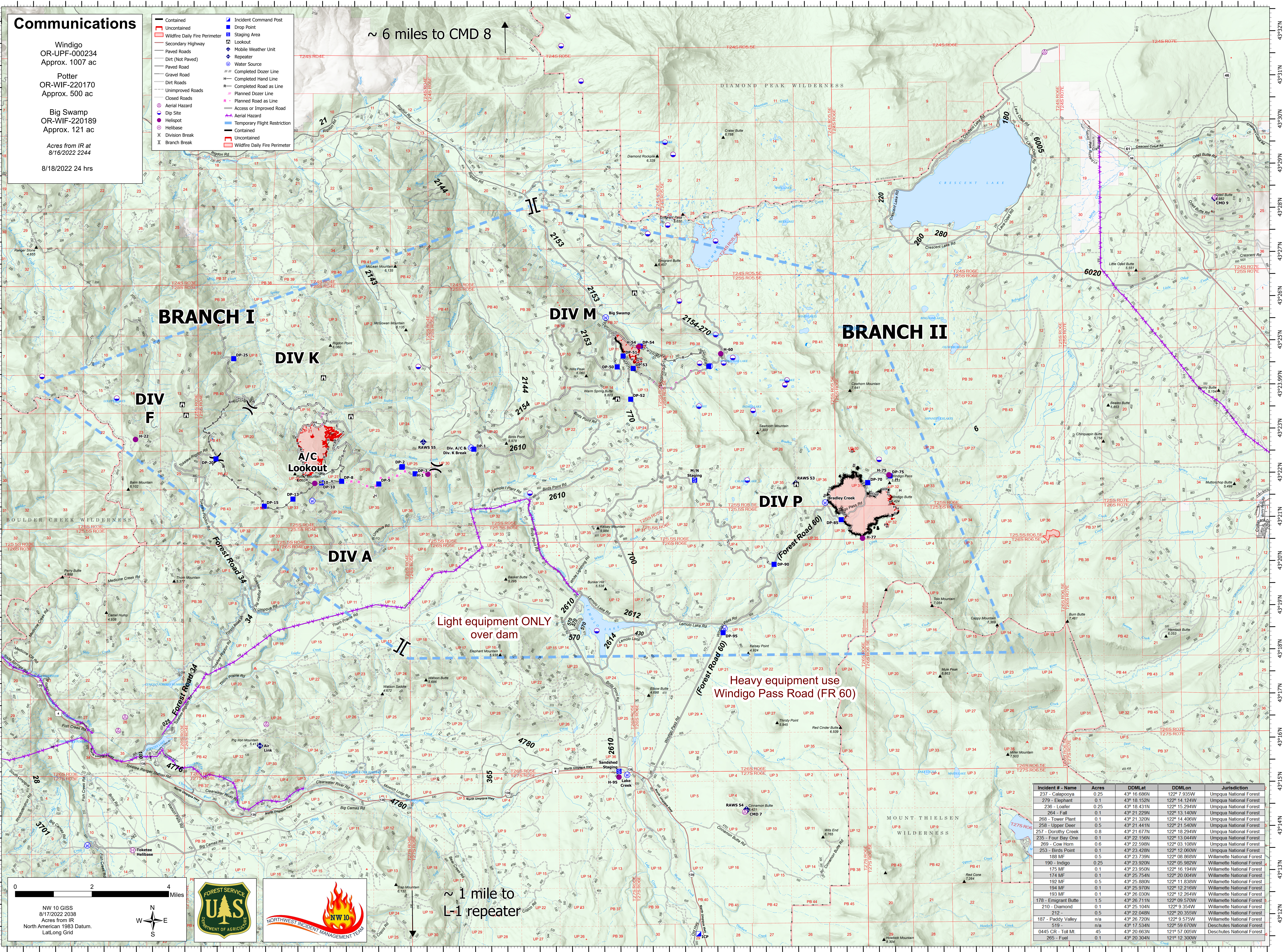
Big Swamp
OR-WIF-220189
Approx. 121 ac

Acreage from IR at
8/16/2022 2244

8/18/2022 24 hrs

- Contained
- Uncontained
- Wildfire Daily Fire Perimeter
- Secondary Highway
- Paved Roads
- Dirt (Not Paved)
- Paved Road
- Gravel Road
- Dirt Roads
- Unimproved Roads
- Closed Roads
- Aerial Hazard
- Dip Site
- Helispot
- Helibase
- Division Break
- Branch Break
- Incident Command Post
- Drop Point
- Staging Area
- Lookout
- Mobile Weather Unit
- Repeater
- Water Source
- Completed Dozer Line
- Completed Hand Line
- Completed Road as Line
- Planned Dozer Line
- Access or Improved Road
- Aerial Hazard
- Temporary Flight Restriction
- Contained
- Uncontained
- Wildfire Daily Fire Perimeter

~ 6 miles to CMD 8



BRANCH I

DIV M

BRANCH II

DIV F

DIV K

DIV A

DIV P

A/C Lookout

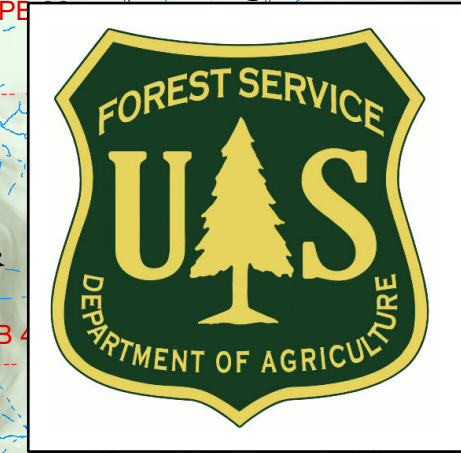
Light equipment ONLY
over dam

Heavy equipment use
Windigo Pass Road (FR 60)

~ 1 mile to
L-1 repeater

0 2 4 Miles

NW 10 GIS
8/17/2022 2038
Acreage from IR
North American 1983 Datum.
LatLong Grid



Incident # - Name	Acres	DDMLat	DDMLon	Jurisdiction
237 - Calapooya	0.25	43° 16.686N	122° 7.935W	Umpqua National Forest
279 - Elephant	0.1	43° 18.152N	122° 14.124W	Umpqua National Forest
230 - Loafer	0.25	43° 18.431N	122° 15.254W	Umpqua National Forest
264 - Fall	0.1	43° 21.220N	122° 03.140W	Umpqua National Forest
268 - Tower Plant	0.1	43° 21.320N	122° 14.406W	Umpqua National Forest
258 - Upper Deer	0.5	43° 21.441N	122° 21.540W	Umpqua National Forest
257 - Dorothy Creek	0.8	43° 21.677N	122° 18.294W	Umpqua National Forest
235 - Four Bay One	0.1	43° 22.156N	122° 13.044W	Umpqua National Forest
209 - Cow Horn	0.6	43° 22.598N	122° 03.108W	Umpqua National Forest
253 - Birds Point	0.1	43° 23.420N	122° 12.060W	Umpqua National Forest
189 MF	0.5	43° 23.739N	122° 06.989W	Umpqua National Forest
190 - Indigo	0.25	43° 23.920N	122° 05.982W	Umpqua National Forest
175 MF	0.1	43° 23.950N	122° 16.194W	Umpqua National Forest
174 MF	0.1	43° 25.754N	122° 20.004W	Umpqua National Forest
192 MF	0.5	43° 25.880N	122° 11.838W	Umpqua National Forest
194 MF	0.1	43° 25.970N	122° 21.216W	Umpqua National Forest
193 MF	0.1	43° 26.030N	122° 12.264W	Umpqua National Forest
178 - Emigrant Butte	1.5	43° 26.711N	122° 09.570W	Umpqua National Forest
210 - Diamond	0.1	43° 25.104N	122° 9.354W	Umpqua National Forest
212 -	0.5	43° 22.048N	122° 20.355W	Umpqua National Forest
187 - Paddy Valley	n/a	43° 26.720N	122° 9.575W	Umpqua National Forest
519 -	n/a	43° 17.534N	122° 59.670W	Deschutes National Forest
0445 CR - Toll Mt	45	43° 20.663N	121° 57.005W	Deschutes National Forest
265 - Fuel	0.1	43° 20.304N	121° 12.300W	Deschutes National Forest