

# Operations

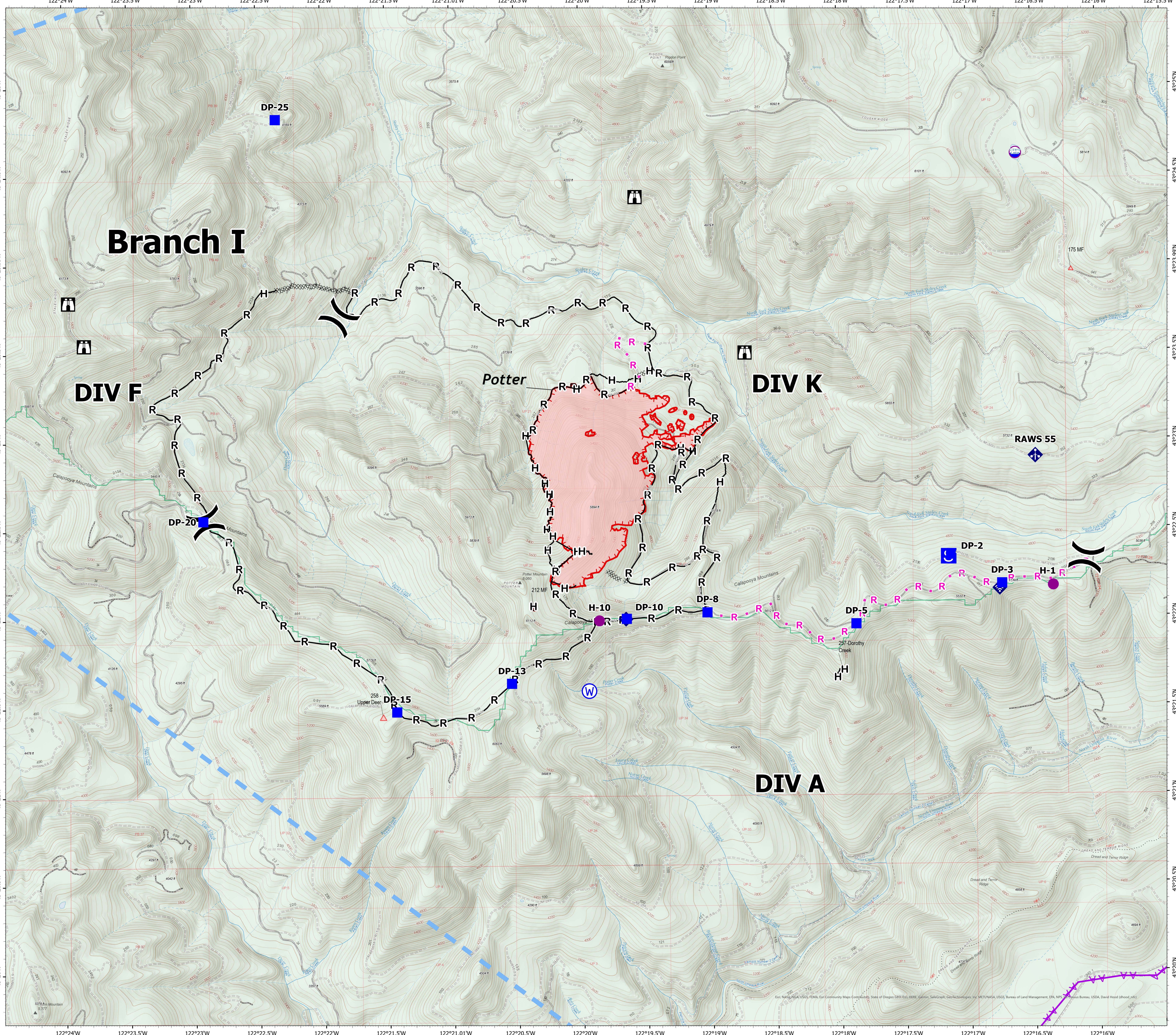
Potter

OR-WIF-220170

8/18/2022 24 hrs

500 acres at 8/16/2022 2244 from IR

- Dip Site
- Helispot
- Division Break
- Drop Point
- Staging Area
- Lookout
- Water Development or Draft Site
- Mobile Weather Unit
- Internet Access
- Water Source
- Completed Dozer Line
- Completed Hand Line
- Completed Road as Line
- Planned Road as Line
- Aerial Hazard
- Temporary Flight Restriction
- Uncontained
- Wildfire Daily Fire Perimeter EventPolygon



## Branch I

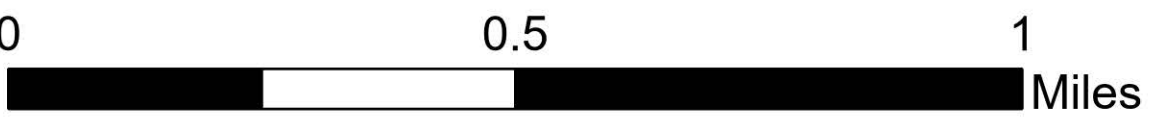
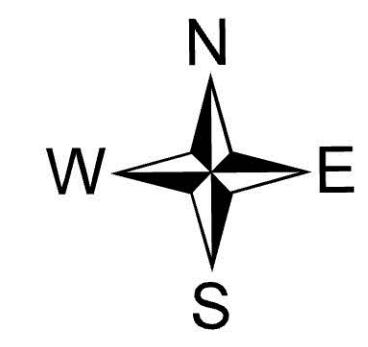
## DIV F

## Potter

## DIV K

## RAWS 55

## DIV A



NW 10 GISS  
8/17/2022 2134

North American 1983 Datum, LatLong  
Grid

Esri, NASA, NOAA, USGS, FEMA, For Community Maps Contributing: State of Oregon GEO-Info, HERE, Garmin, SafeGraph, Geo-Rectification, Inc., 4617/NASA, USGS, Bureau of Land Management, EPA, NPS, The Nature Bureau, USDA, David Hood (hood\_nfs)