

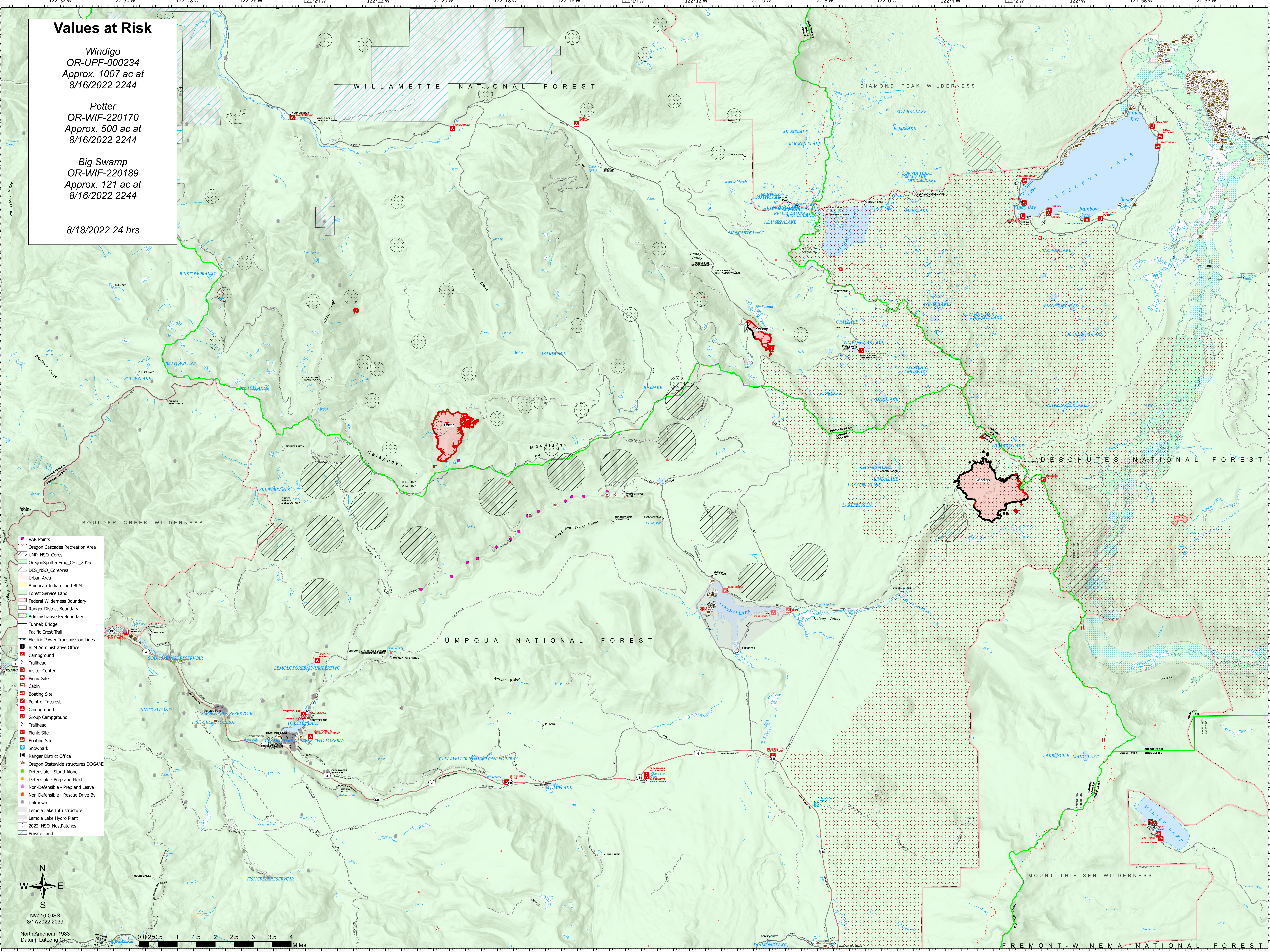
Values at Risk

Windigo
OR-UPF-000234
Approx. 1007 ac at
8/16/2022 2244

Potter
OR-WIF-220170
Approx. 500 ac at
8/16/2022 2244

Big Swamp
OR-WIF-220189
Approx. 121 ac at
8/16/2022 2244

8/18/2022 24 hrs



- VAR Points
- Oregon Cascades Recreation Area
- UWP_NSQ_Cores
- OregonSpottedFrog_CHU_2016
- DES_NSQ_CoreArea
- Urban Area
- American Indian Land BLM
- Forest Service Land
- Federal Wilderness Boundary
- Ranger District Boundary
- Administrative FS Boundary
- Tunnel; Bridge
- Pacific Crest Trail
- Electric Power Transmission Lines
- BLM Administrative Office
- Campground
- Trailhead
- Visitor Center
- Picnic Site
- Cabin
- Boating Site
- Point of Interest
- Campground
- Group Campground
- Trailhead
- Picnic Site
- Boating Site
- Snowpark
- Ranger District Office
- Oregon Statewide structures DOGAMI
- Defensible - Stand Alone
- Defensible - Prep and Hold
- Non-Defensible - Prep and Leave
- Non-Defensible - Rescue Drive-By
- Unknown
- Lemola Lake Infrastructure
- Lemola Lake Hydro Plant
- 2022_NSQ_NestPatches
- Private Land



NW 10 GISS
8/17/2022 2039
North American 1983
Datum: LatLong Grid

