

Air Operations

Windigo
OR-UPF-000234
Approx. 1007 ac

Potter
OR-WIF-220170
Approx. 628 ac

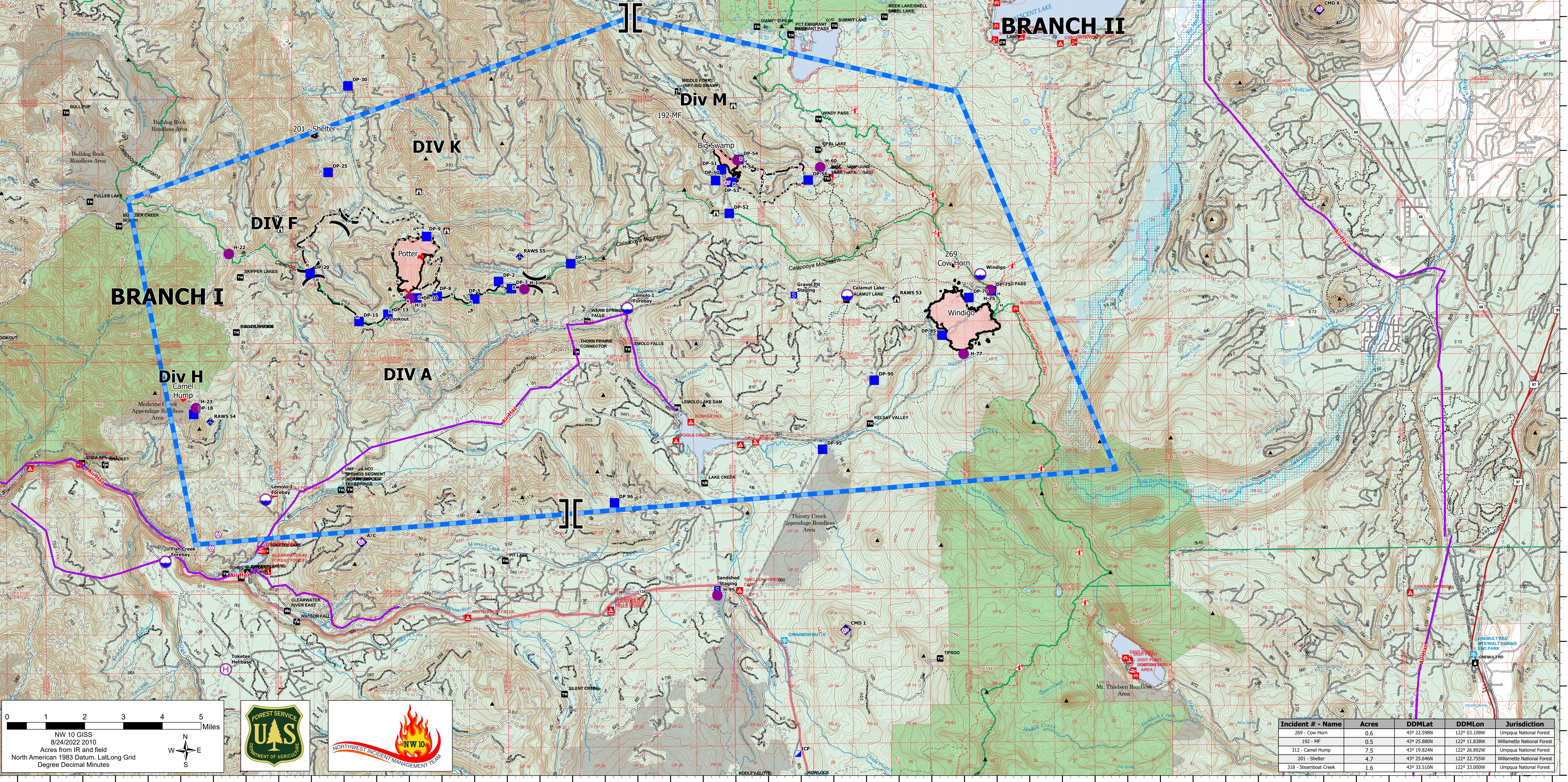
Big Swamp
OR-WIF-220189
Approx. 111 ac

Camel Hump
OR-UPF-000312
Approx. 6 ac

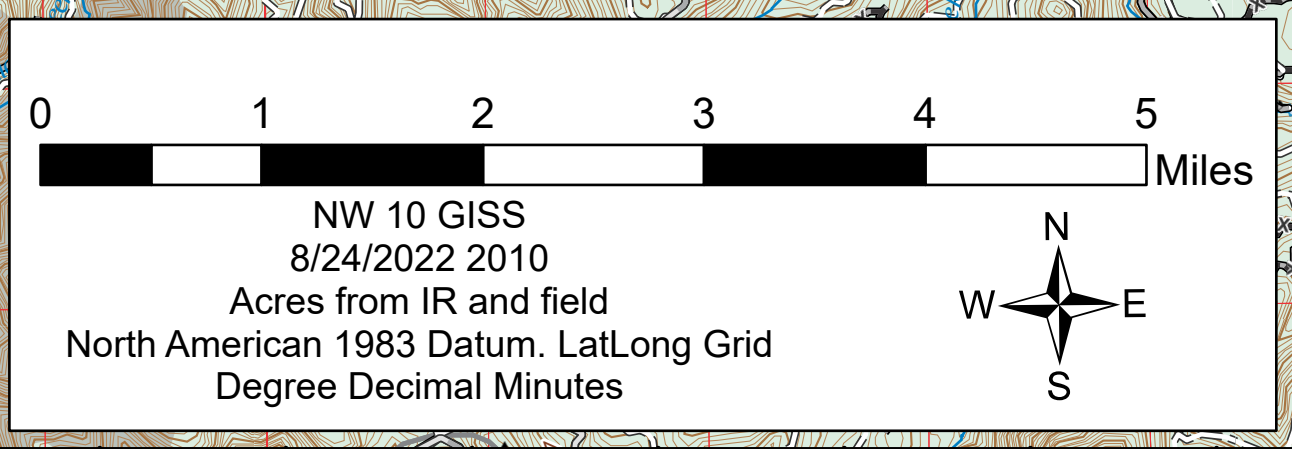
Acres from IR at
8/21/2022 2211

8/25/2022 24 hrs

- Aerial Hazard
- Dip Site
- Helispot
- Heli-base
- Division Break
- Branch Break
- Incident Command Post
- Drop Point
- Staging Area
- Lookout
- Mobile Weather Unit
- Repeater
- Completed Dozer Line
- Completed Fuel Break
- Completed Hand Line
- Completed Road as Line
- Planned Dozer Line
- Access or Improved Road
- Aerial Hazard
- Retardant Drop
- Temporary Flight Restriction
- Wildfire Daily Fire Perimeter



Incident Name	FC Point Type	Label	Latitude WGS84 DDM	Longitude WGS84 DDM
Windigo	Dip Site	Calamut Lake	43° 21.966' N	122° 06.438' W
Potter	Dip Site	Fish Creek Forebay	43° 16.118' N	122° 27.427' W
Potter	Dip Site	Hills Creek	43° 40.150' N	122° 25.468' W
Windigo	Dip Site	Lemolo 1 Forebay	43° 21.720' N	122° 13.188' W
Potter	Dip Site	Lemolo 2 Forebay	43° 17.500' N	122° 24.341' W
Windigo	Dip Site	Windigo	43° 22.402' N	122° 02.338' W
Potter	Drop Point	DP-1	43° 22.729' N	122° 14.916' W
Potter	Drop Point	DP-10	43° 21.994' N	122° 19.653' W
Potter	Drop Point	DP-13	43° 21.633' N	122° 20.545' W
Potter	Drop Point	DP-15	43° 21.476' N	122° 21.435' W
Potter	Drop Point	DP-18	43° 19.418' N	122° 26.528' W
Potter	Drop Point	DP-2	43° 22.347' N	122° 17.140' W
Potter	Drop Point	DP-20	43° 22.557' N	122° 22.925' W
Potter	Drop Point	DP-25	43° 24.824' N	122° 22.349' W
Potter	Drop Point	DP-3	43° 22.183' N	122° 16.746' W
Potter	Drop Point	DP-30	43° 26.757' N	122° 21.719' W
Potter	Drop Point	DP-5	43° 21.959' N	122° 17.877' W
Big Swamp	Drop Point	DP-50	43° 24.561' N	122° 10.440' W
Big Swamp	Drop Point	DP-51	43° 24.806' N	122° 10.253' W
Big Swamp	Drop Point	DP-52	43° 23.826' N	122° 10.029' W
Big Swamp	Drop Point	DP-53	43° 24.523' N	122° 09.942' W
Big Swamp	Drop Point	DP-54	43° 25.027' N	122° 09.719' W
Big Swamp	Drop Point	DP-56	43° 24.554' N	122° 07.594' W
Windigo	Drop Point	DP-70	43° 21.880' N	122° 02.700' W
Windigo	Drop Point	DP-75	43° 22.027' N	122° 02.001' W
Potter	Drop Point	DP-8	43° 22.028' N	122° 19.029' W
Windigo	Drop Point	DP-85	43° 21.047' N	122° 03.535' W
Potter	Drop Point	DP-9	43° 23.365' N	122° 19.339' W
Windigo	Drop Point	DP-90	43° 20.053' N	122° 05.633' W
Windigo	Drop Point	DP-95	43° 18.517' N	122° 07.238' W
Windigo	Drop Point	DP 96	43° 17.363' N	122° 13.640' W
Windigo	Helibase	Crescent Helibase	43° 31.868' N	122° 12.016' W
Potter	Helibase	Toketee Helibase	43° 13.705' N	122° 25.596' W
Potter	Helispot	H-1	43° 22.171' N	122° 16.350' W
Potter	Helispot	H-10	43° 21.984' N	122° 19.864' W
Potter	Helispot	H-22	43° 23.009' N	122° 25.419' W
Potter	Helispot	H-23	43° 19.558' N	122° 26.463' W
Big Swamp	Helispot	H-54	43° 25.015' N	122° 09.761' W
Big Swamp	Helispot	H-60	43° 24.835' N	122° 07.220' W
Windigo	Helispot	H-75	43° 22.050' N	122° 02.038' W
Windigo	Helispot	H-77	43° 20.623' N	122° 02.879' W
Windigo	Helispot	H-95	43° 15.210' N	122° 10.510' W
Potter	Staging Area	Gravel Pit Staging	43° 22.335' N	122° 17.159' W
Windigo	Staging Area	Gravel Pit Staging	43° 21.980' N	122° 08.070' W
Windigo	Staging Area	Sandshed Staging	43° 15.401' N	122° 10.508' W



Incident # - Name	Acres	DDMLat	DDMLon	Jurisdiction
269 - Cow Horn	0.6	43° 22.998N	122° 03.108W	Umpqua National Forest
192 - MF	0.5	43° 25.880N	122° 11.838W	Willamette National Forest
312 - Camel Hump	7.5	43° 19.824N	122° 26.892W	Umpqua National Forest
201 - Shelter	4.7	43° 25.646N	122° 22.755W	Willamette National Forest
318 - Steamboat Creek	1.6	43° 33.510N	122° 33.000W	Umpqua National Forest