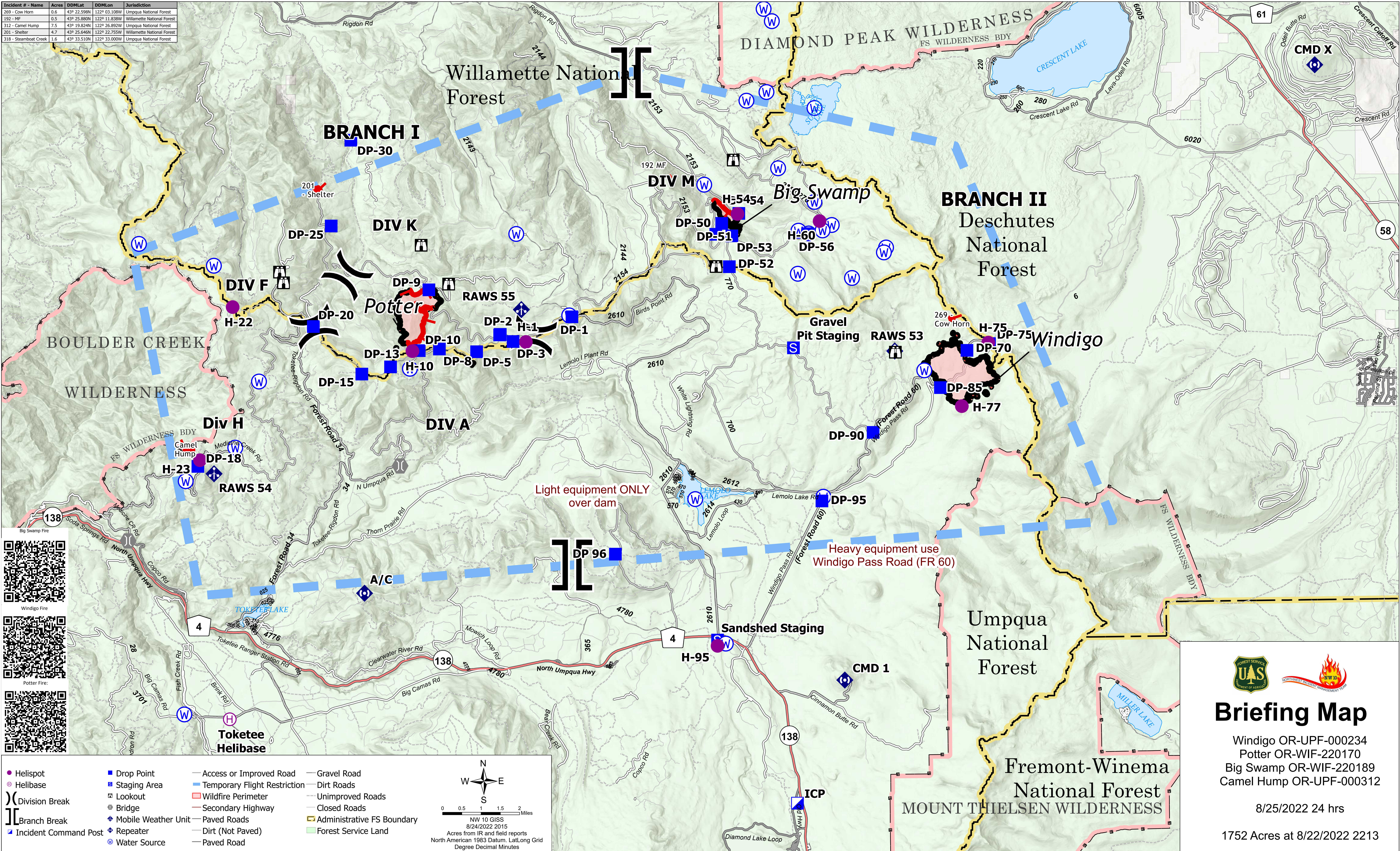


Incident # - Name	Acres	DDMLat	DDMLon	Jurisdiction
269 - Cow Horn	0.6	43° 22.598N	122° 03.108W	Umpqua National Forest
192 - MF	0.5	43° 25.880N	122° 11.838W	Willamette National Forest
312 - Camel Hump	7.5	43° 19.824N	122° 26.892W	Umpqua National Forest
201 - Shelter	4.7	43° 25.646N	122° 22.755W	Willamette National Forest
318 - Steamboat Creek	1.6	43° 33.510N	122° 33.000W	Umpqua National Forest



Briefing Map

Windigo OR-UPF-000234
 Potter OR-WIF-220170
 Big Swamp OR-WIF-220189
 Camel Hump OR-UPF-000312

8/25/2022 24 hrs

1752 Acres at 8/22/2022 2213