

# Communications

Windigo  
OR-UPF-000234  
Approx. 1007 ac

Potter  
OR-WIF-220170  
Approx. 628 ac

Big Swamp  
OR-WIF-220189  
Approx. 111 ac

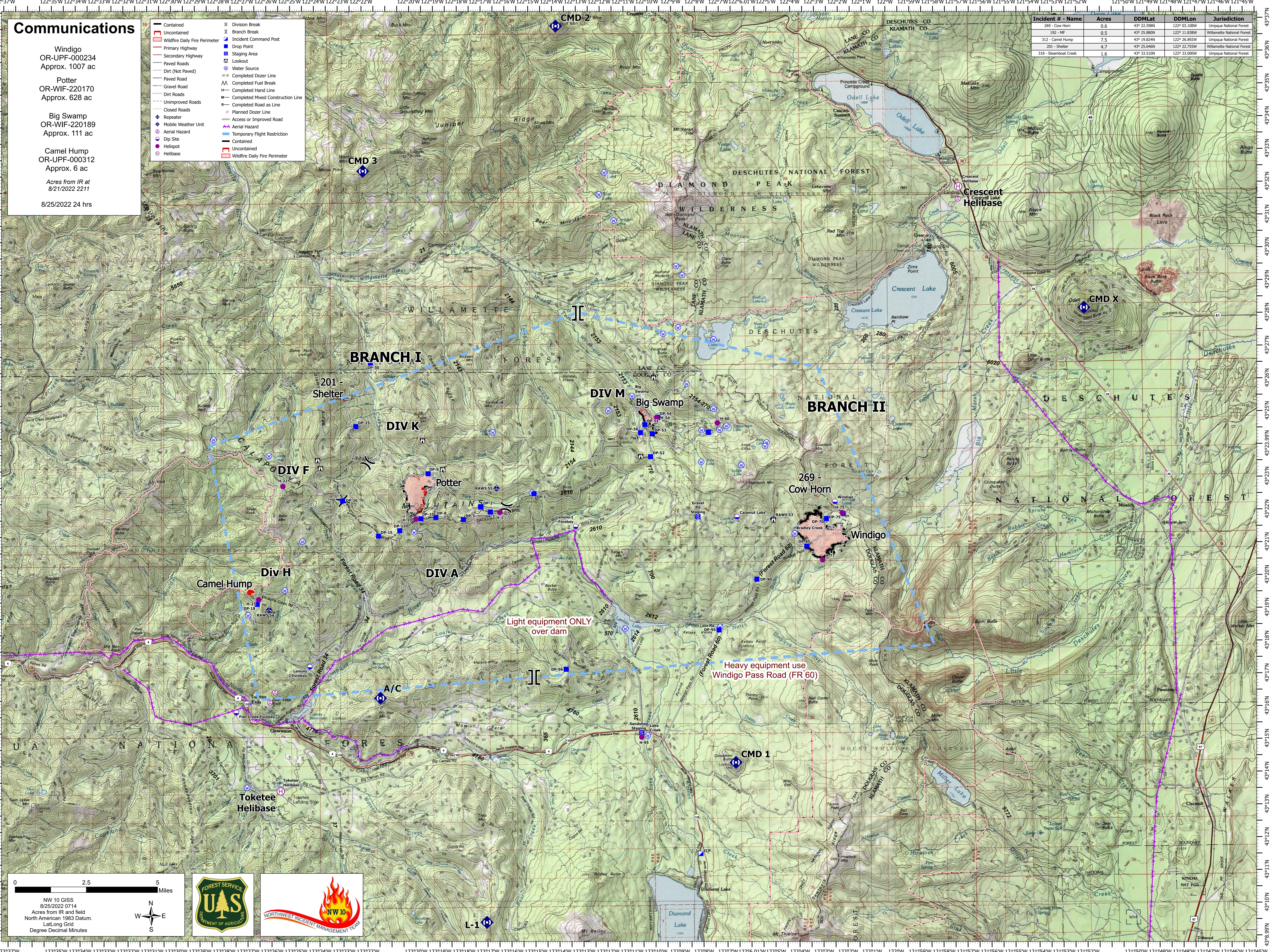
Camel Hump  
OR-UPF-000312  
Approx. 6 ac

Acres from IR at  
8/21/2022 2211

8/25/2022 24 hrs

- Contained
- - - Uncontained
- ▭ Wildfire Daily Fire Perimeter
- ▬ Primary Highway
- ▬ Secondary Highway
- ▬ Paved Roads
- ▬ Dirt (Not Paved)
- ▬ Gravel Road
- ▬ Paved Road
- ▬ Dirt Roads
- ▬ Unimproved Roads
- ▬ Closed Roads
- ▬ Repeater
- ▬ Mobile Weather Unit
- ▬ Dip Site
- ▬ Helispot
- ▬ Helibase
- ▬ Division Break
- ▬ Branch Break
- ▬ Incident Command Post
- ▬ Drop Point
- ▬ Staging Area
- ▬ Lookout
- ▬ Water Source
- ▬ Completed Dozer Line
- ▬ Completed Fuel Break
- ▬ Completed Hand Line
- ▬ Completed Mixed Construction Line
- ▬ Completed Road as Line
- ▬ Planned Dozer Line
- ▬ Access or Improved Road
- ▬ Aerial Hazard
- ▬ Temporary Flight Restriction
- ▬ Contained
- ▬ Uncontained
- ▬ Wildfire Daily Fire Perimeter

| Incident # - Name     | Acres | DDMLat      | DDMLon       | Jurisdiction               |
|-----------------------|-------|-------------|--------------|----------------------------|
| 269 - Cow Horn        | 0.6   | 43° 22.598N | 122° 03.108W | Umpqua National Forest     |
| 192 - MF              | 0.5   | 43° 25.880N | 122° 11.838W | Willamette National Forest |
| 312 - Camel Hump      | 7.5   | 43° 19.824N | 122° 26.892W | Umpqua National Forest     |
| 201 - Shelter         | 4.7   | 43° 25.646N | 122° 22.755W | Willamette National Forest |
| 318 - Steamboat Creek | 1.6   | 43° 33.510N | 122° 33.000W | Umpqua National Forest     |



Light equipment ONLY  
over dam

Heavy equipment use  
Windigo Pass Road (FR 60)

0 2.5 5 Miles

NW 10 GIS  
8/25/2022 0714  
Acres from IR and field  
North American 1983 Datum.  
Lat/Long Grid  
Degree Decimal Minutes



L-1