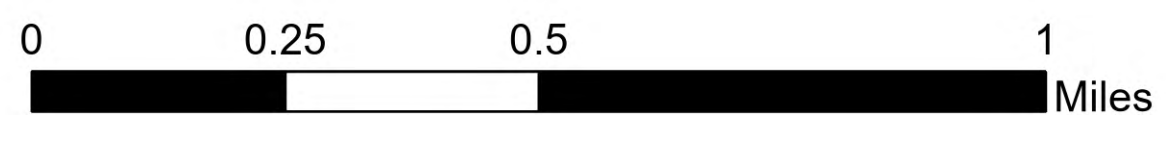
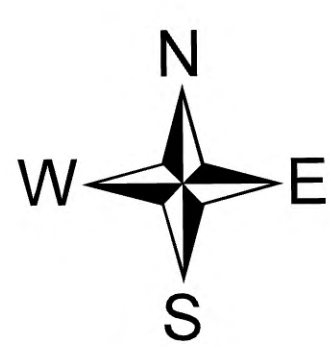
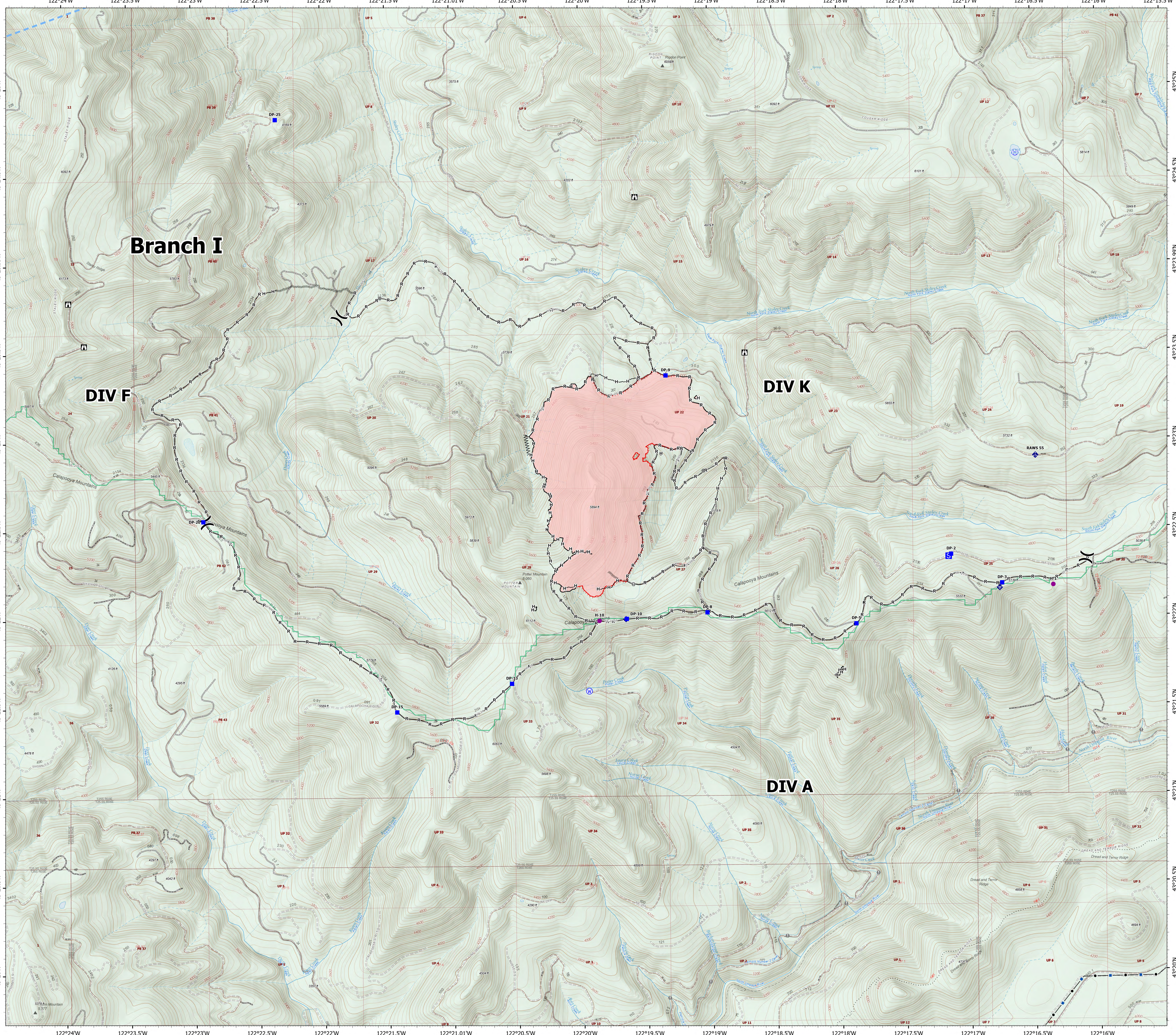


Mobile Map

Potter
OR-WIF-220170
8/25/2022 24 hrs
628 acres at 8/23/2022 2127



- Helispot
- ⌘ Division Break
- Drop Point
- Ⓢ Staging Area
- 🏠 Lookout
- ⚠ Value at Risk
- ⬢ Other
- 🏠 Water Development or Draft Site
- 📶 Mobile Weather Unit
- 📶 Internet Access
- 🌊 Water Source
- ⌘ Completed Dozer Line
- ⌘ Completed Fuel Break
- Completed Hand Line
- Completed Road as Line
- 🔵 Temporary Flight Restriction
- Contained
- 🔴 Uncontained
- 🔴 Wildfire Daily Fire Perimeter
- 📶 Transmission Lines
- Roads



NW 10 GISS
8/24/2022 2023
North American 1983 Datum.
Lat,Long Grid