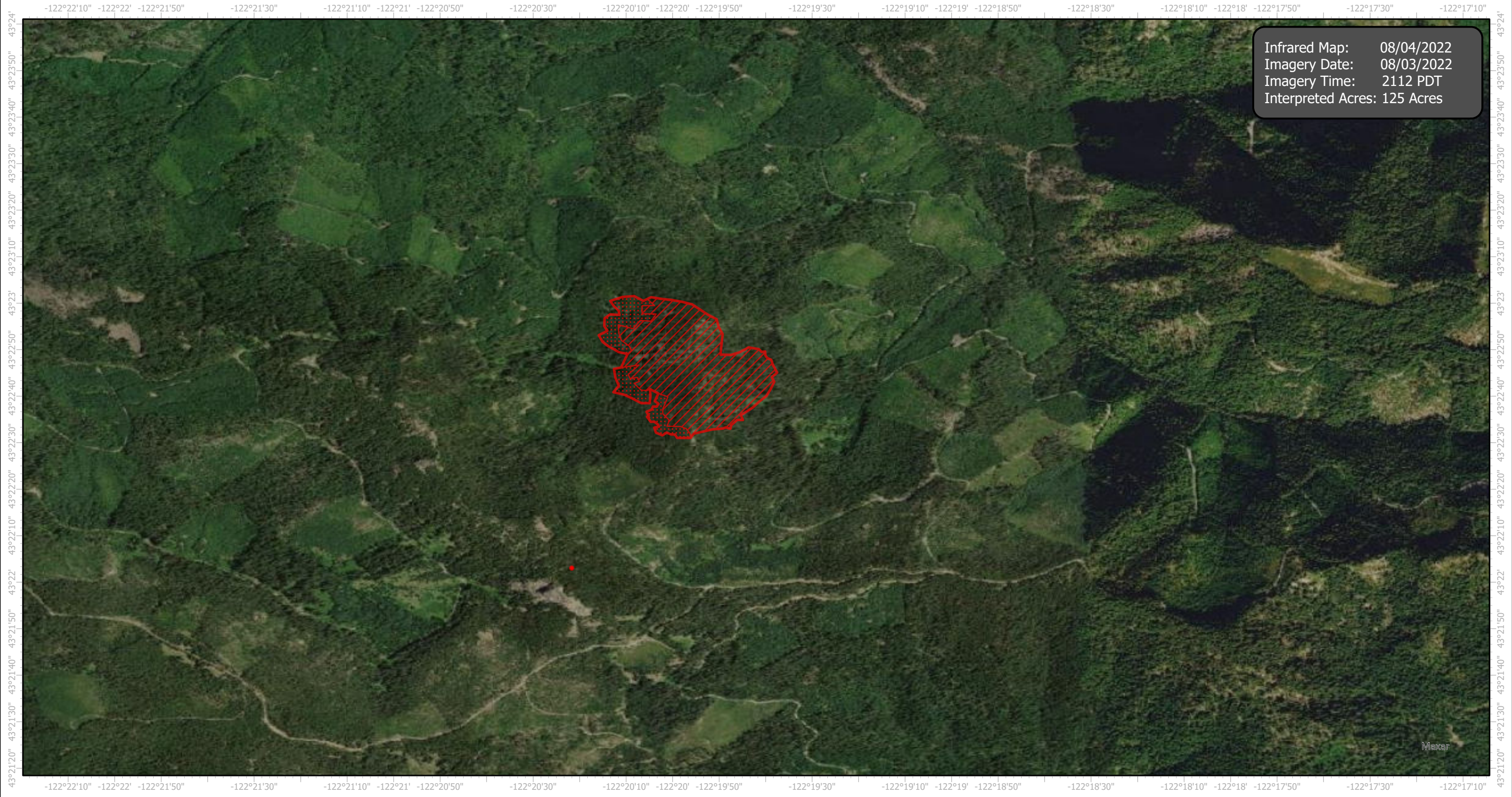


Potter Infrared Map

Incident # (OR-WIF-220170)



Infrared Map: 08/04/2022
Imagery Date: 08/03/2022
Imagery Time: 2112 PDT
Interpreted Acres: 125 Acres

GCS WGS 1984
Scale: 1:24,000

- IR Isolated Heat Source
- IR Heat Perimeter
- IR Intense Heat
- IR Scattered Heat



Infrared Interrupter: Daniel LeVrier
email: daniel.levrier@usda.gov