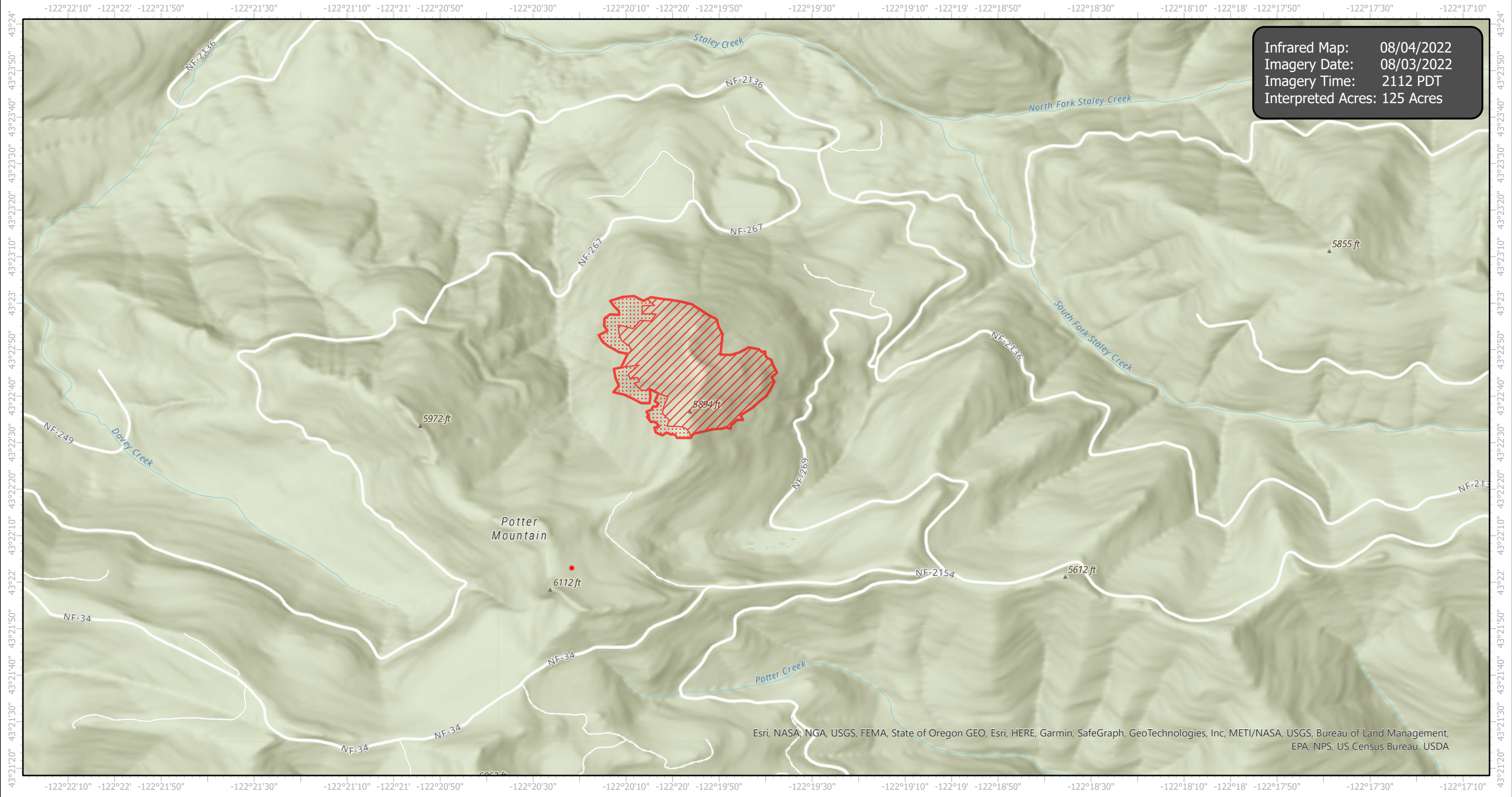


Potter Infrared Map

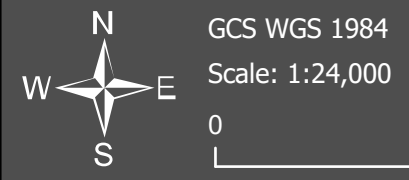
Incident # (OR-WIF-220170)



Infrared Map: 08/04/2022
Imagery Date: 08/03/2022
Imagery Time: 2112 PDT
Interpreted Acres: 125 Acres



Esri, NASA, NGA, USGS, FEMA, State of Oregon GEO, Esri, HERE, Garmin, SafeGraph, GeoTechnologies, Inc, METI/NASA, USGS, Bureau of Land Management, EPA, NPS, US Census Bureau, USDA



- IR Isolated Heat Source (red dot)
- IR Intense Heat (red hatched area)
- IR Heat Perimeter (red outline)
- IR Scattered Heat (red diagonal lines)

Infrared Interrupter: Daniel LeVrier
email: daniel.levrier@usda.gov