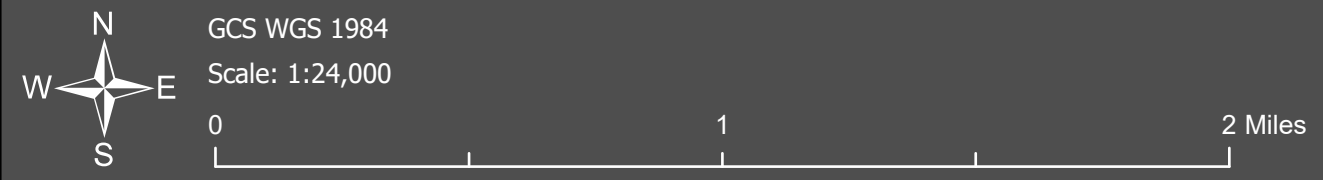
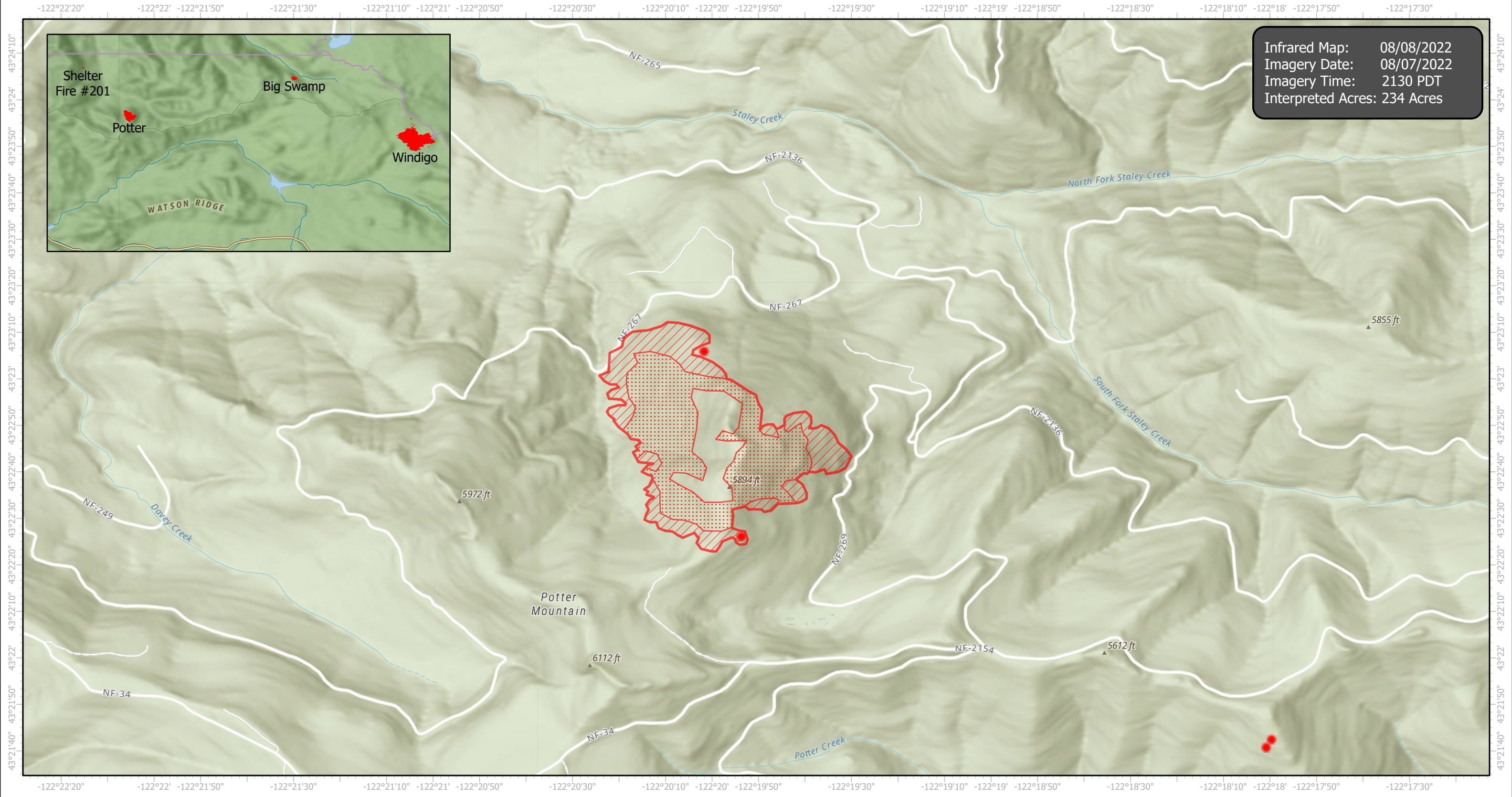


Potter Infrared Map

Incident # (OR-WIF-220170)



Infrared Map: 08/08/2022
Imagery Date: 08/07/2022
Imagery Time: 2130 PDT
Interpreted Acres: 234 Acres



- IR Isolated Heat Source
- ▭ IR Heat Perimeter
- ▨ IR Intense Heat
- ▤ IR Scattered Heat

Infrared Interrupter: Daniel LeVrier
email: daniel.levrier@usda.gov