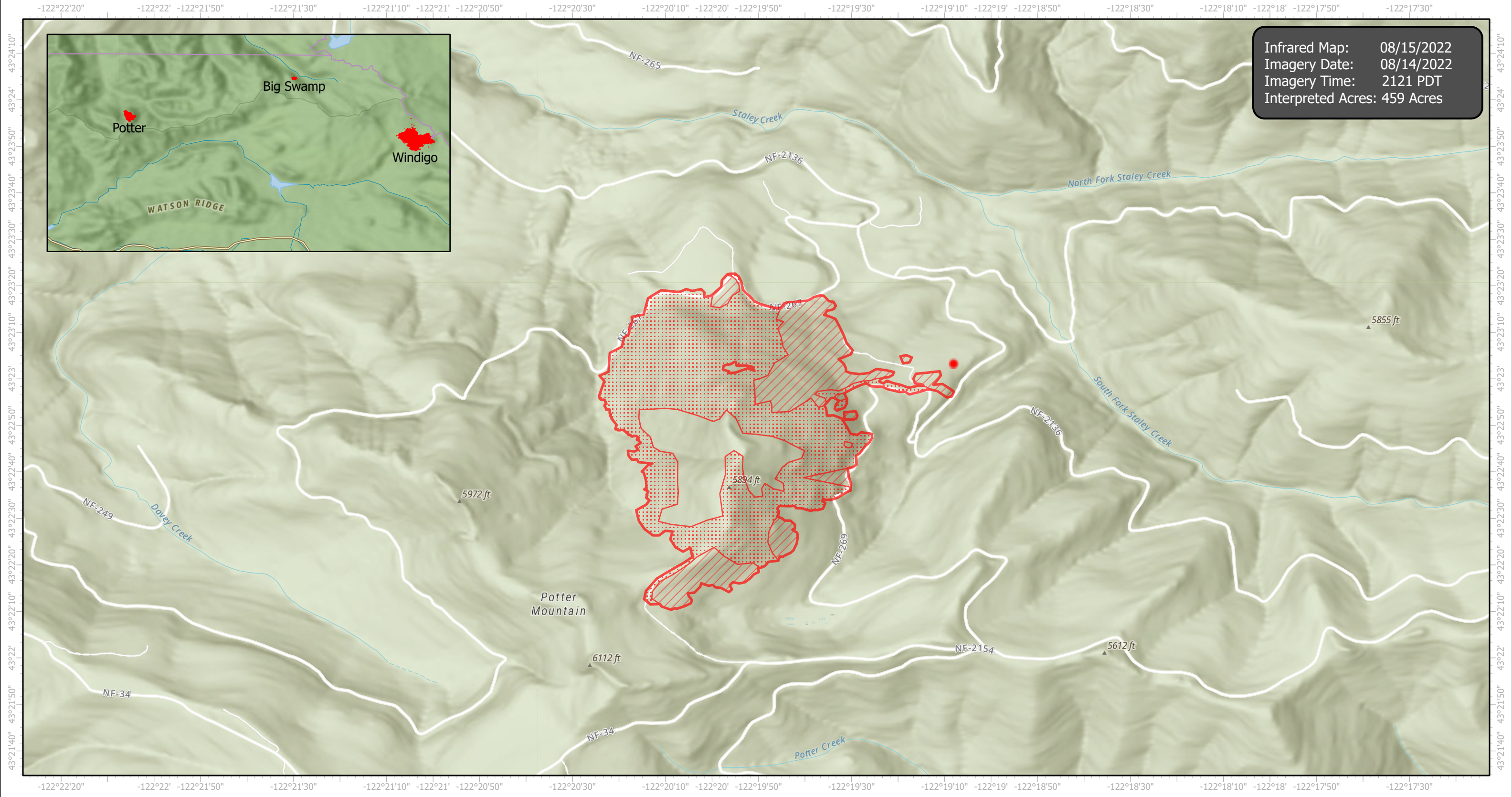
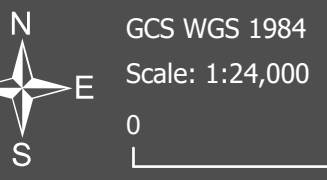


# Potter Infrared Map

Incident # (OR-WIF-220170)



Infrared Map: 08/15/2022  
Imagery Date: 08/14/2022  
Imagery Time: 2121 PDT  
Interpreted Acres: 459 Acres



- IR Isolated Heat Source
- ▨ IR Intense Heat
- ▭ IR Heat Perimeter
- IR Scattered Heat

Infrared Interrupter: Daniel LeVrier  
email: [daniel.levrier@usda.gov](mailto:daniel.levrier@usda.gov)