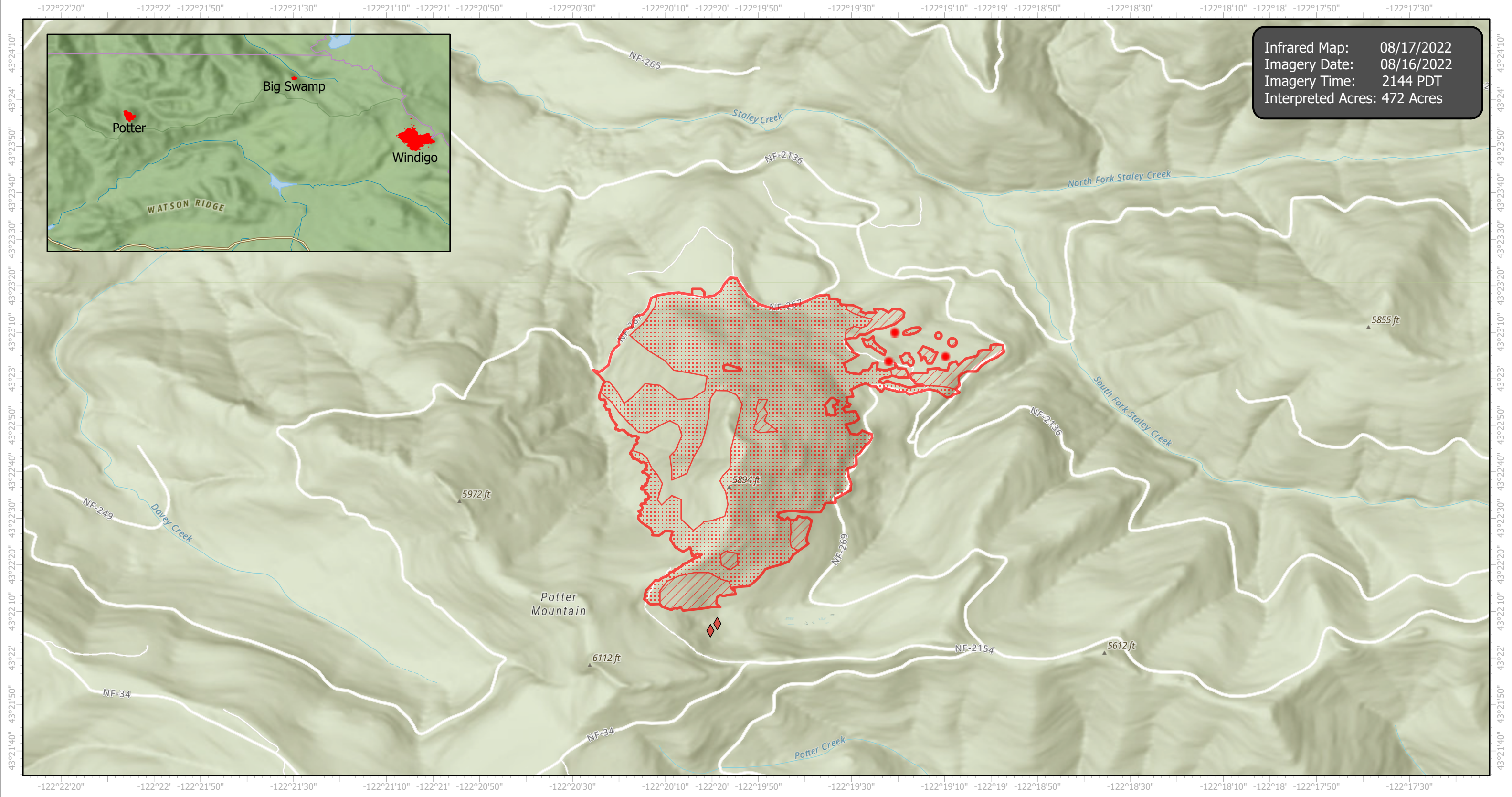


# Potter Infrared Map

Incident # (OR-WIF-220170)



Infrared Map: 08/17/2022  
Imagery Date: 08/16/2022  
Imagery Time: 2144 PDT  
Interpreted Acres: 472 Acres



- Possible IR Heat Source
- IR Isolated Heat Source
- IR Heat Perimeter
- IR Intense Heat
- IR Scattered Heat

Infrared Interrupter: Daniel LeVrier  
email: [daniel.levrier@usda.gov](mailto:daniel.levrier@usda.gov)