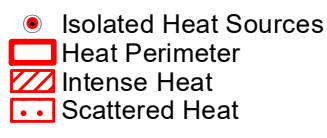
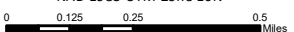




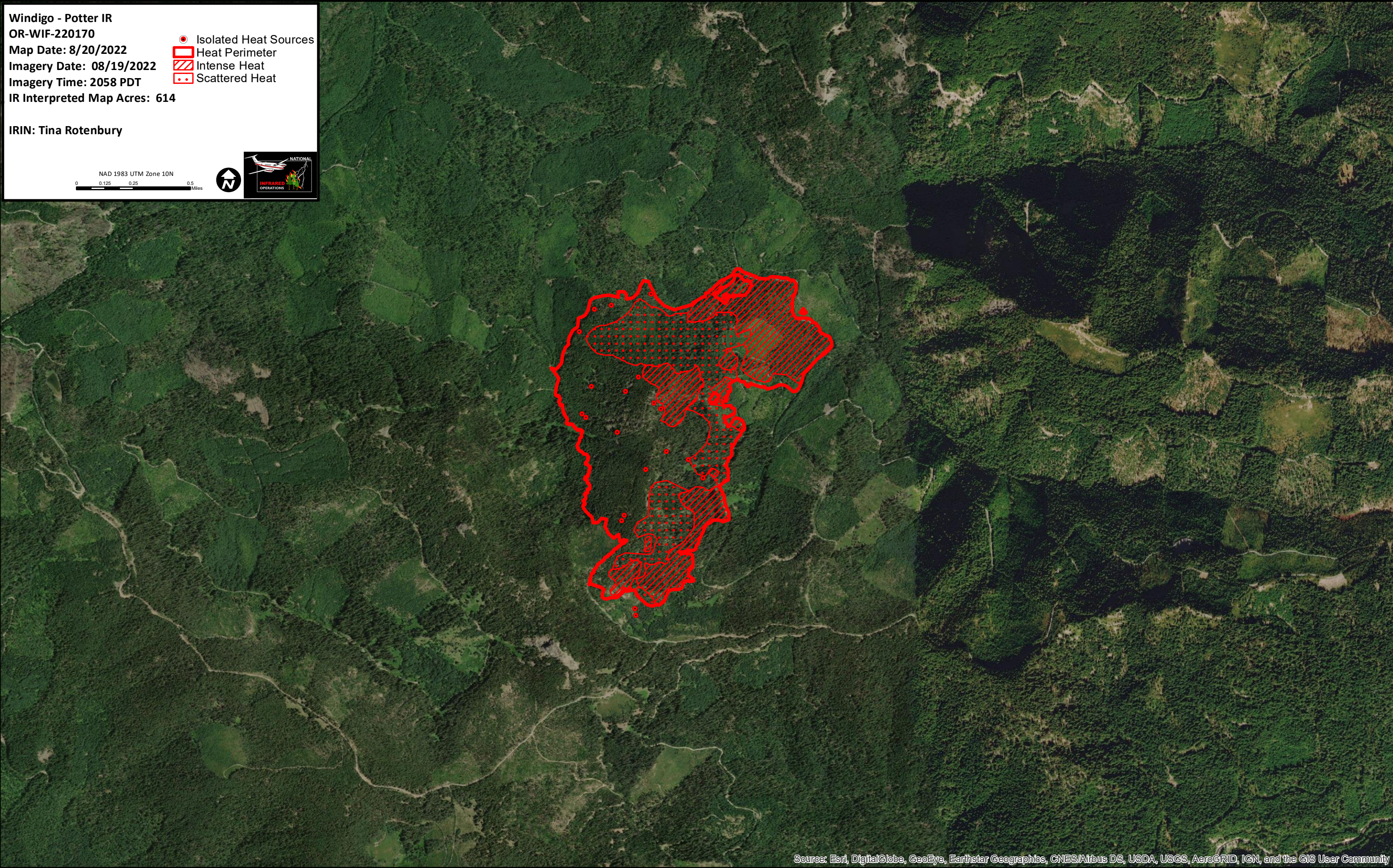
122°23'W 122°22'W 122°21'W 122°20'W 122°19'W 122°18'W 122°17'W 122°16'W

Windigo - Potter IR
OR-WIF-220170
Map Date: 8/20/2022
Imagery Date: 08/19/2022
Imagery Time: 2058 PDT
IR Interpreted Map Acres: 614

IRIN: Tina Rotenbury





43°24'N
43°23'N
43°22'N

43°24'N
43°23'N
43°22'N

Source: Esri, DigitalGlobe, GeoEye, Earthstar Geographics, CNES/Airbus DS, USDA, USGS, AeroGRID, IGN, and the GIS User Community

122°23'W 122°22'W 122°21'W 122°20'W 122°19'W 122°18'W 122°17'W