

123°40'W

123°35'W

123°30'W

123°25'W

123°20'W



Air Operations

Rum Creek
ORMED000243
08/26/2022 24hr

Rum Creek: 959 acres on 08/24/2022 @ 2053
Hog Creek 1: 32 acres on 08/24/2022 @ 2052

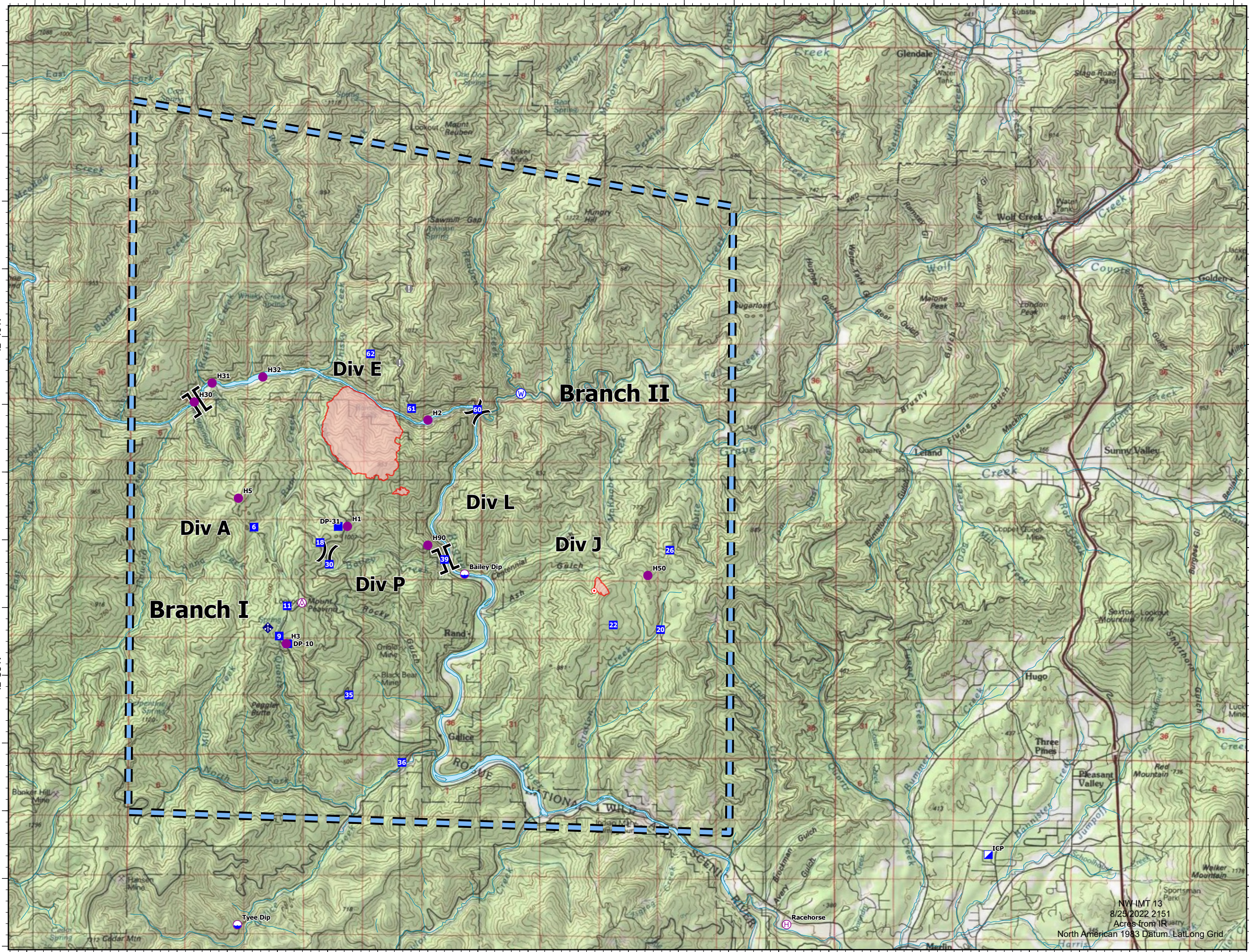


ICS 220 Frequencies

AA Prim: 128.1000 AM
AA Sec: 132.5000 AM
AG Prim: 167.1500 FM
AG Sec: 168.0375 FM
Deck: RX/TX 168.350; RX/TX 1565.7

- Aerial Hazard
- Dip Site
- Helispot
- Helibase
- Division Break
- Branch Break
- Incident Command Post
- Drop Point
- Hot Spot - Spot Fire
- Value at Risk
- Mobile Weather Unit
- Water Source
- Temporary Flight Restriction
- Fire Perimeter
- Communication Towers
- Medford repeater sites

FC Point Type	Label	Latitude WGS84 DDM	Longitude WGS84 DDM
Aerial Hazard		42° 36.106' N	123° 38.563' W
Branch Break		42° 39.056' N	123° 40.696' W
Branch Break		42° 36.766' N	123° 35.704' W
Dip Site	Tyee Dip		
Dip Site	Bailey Dip		
Division Break		42° 38.939' N	123° 35.089' W
Division Break		42° 36.837' N	123° 38.067' W
Drop Point	18	42° 36.997' N	123° 38.211' W
Drop Point	11	42° 36.058' N	123° 38.858' W
Drop Point	30	42° 36.678' N	123° 38.024' W
Drop Point	20	42° 35.746' N	123° 31.399' W
Drop Point	26	42° 36.920' N	123° 31.222' W
Drop Point	22	42° 35.811' N	123° 32.343' W
Drop Point	61	42° 38.986' N	123° 36.401' W
Drop Point	36	42° 33.760' N	123° 36.543' W
Drop Point	DP-10	42° 35.500' N	123° 38.841' W
Drop Point	60	42° 38.979' N	123° 35.084' W
Drop Point	39	42° 36.760' N	123° 35.721' W
Drop Point	62	42° 39.789' N	123° 37.230' W
Drop Point	35	42° 34.753' N	123° 37.611' W
Drop Point	6	42° 37.217' N	123° 39.533' W
Drop Point	61	42° 38.990' N	123° 36.401' W
Drop Point	9	42° 35.612' N	123° 39.013' W
Helibase	Racehorse	42° 31.403' N	123° 28.846' W
Helispot	H2	42° 38.818' N	123° 36.075' W
Helispot	H3	42° 35.500' N	123° 38.871' W
Helispot	H50	42° 36.544' N	123° 31.658' W
Helispot	H1	42° 37.239' N	123° 37.668' W
Helispot	H5	42° 37.667' N	123° 39.918' W
Helispot	H32	42° 39.435' N	123° 39.380' W
Helispot	H30	42° 39.057' N	123° 40.747' W
Helispot	H90	42° 36.970' N	123° 36.058' W
Helispot	H31	42° 39.340' N	123° 40.394' W
Hot Spot - Spot Fire		42° 36.313' N	123° 32.728' W
Incident Command Post ICP		42° 32.450' N	123° 24.828' W
Mobile Weather Unit			
Value at Risk		42° 39.662' N	123° 36.645' W
Value at Risk		42° 40.753' N	123° 36.471' W
Water Source		42° 39.219' N	123° 34.217' W



42°40'N

42°40'N

42°35'N

42°35'N

123°40'W

123°35'W

123°30'W

123°25'W

123°20'W

NW-IMT 13
8/25/2022 2151
Acres from IR
North American 1983 Datum, LatLong Grid