


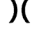
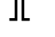









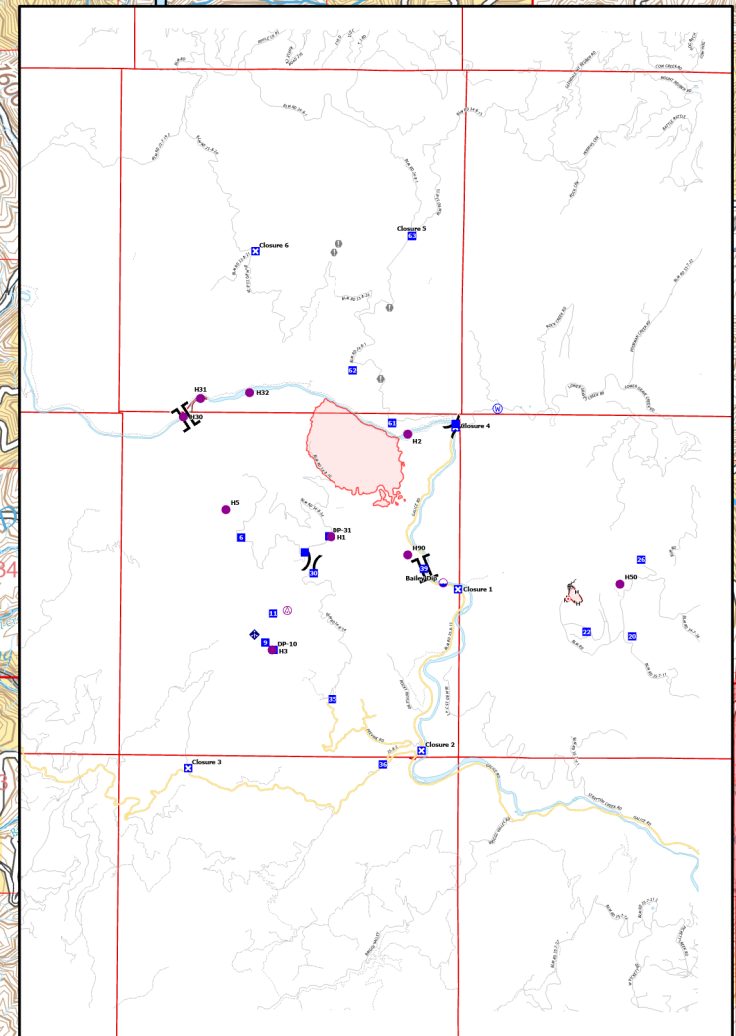
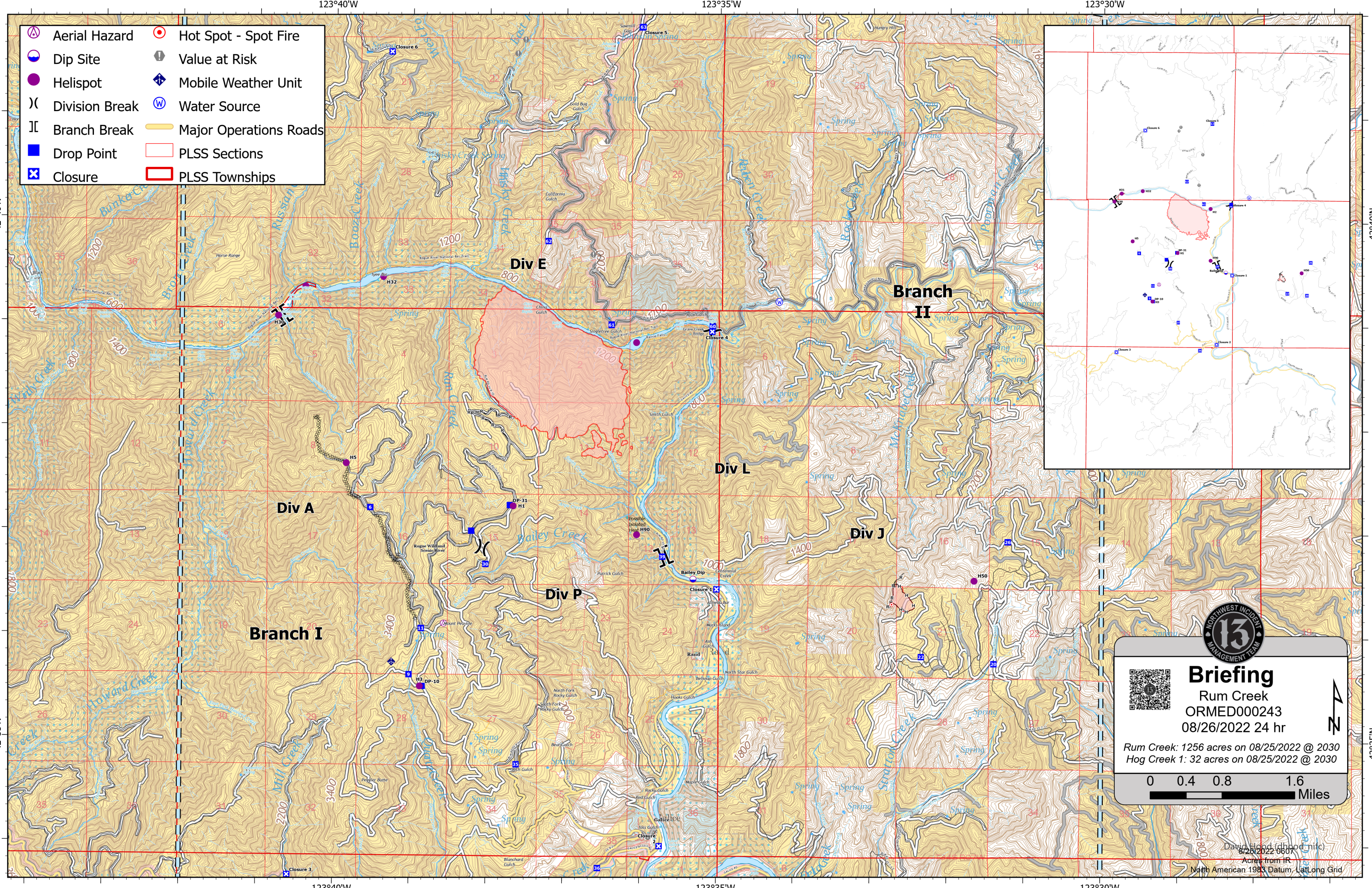


-  Aerial Hazard
-  Dip Site
-  Helispot
-  Division Break
-  Branch Break
-  Drop Point
-  Closure
-  Hot Spot - Spot Fire
-  Value at Risk
-  Mobile Weather Unit
-  Water Source
-  Major Operations Roads
-  PLSS Sections
-  PLSS Townships



Briefing
 Rum Creek
 ORMED000243
 08/26/2022 24 hr

Rum Creek: 1256 acres on 08/25/2022 @ 2030
Hog Creek 1: 32 acres on 08/25/2022 @ 2030

0 0.4 0.8 1.6 Miles



David Hood (dhood@nrc)
 8/26/2022 0607
 Acres from IR
 North American 1983 Datum, Lat/Long Grid