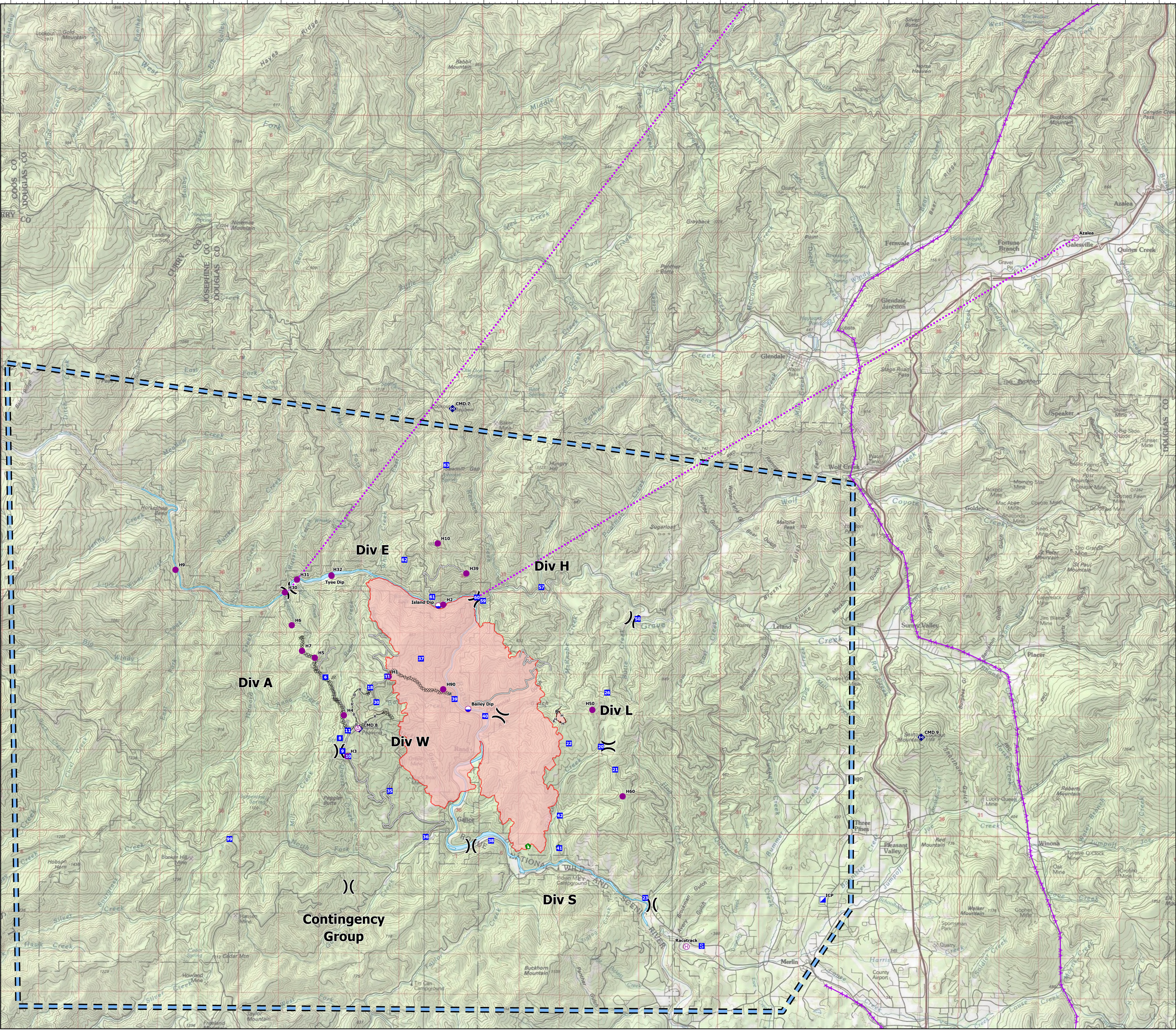


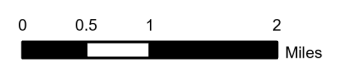
123°45'W 123°40'W 123°35'W 123°30'W 123°25'W 123°20'W 123°15'W

42°50'N 42°45'N 42°40'N 42°35'N 42°30'N



Air Operations

Rum Creek
ORMED000243
08/30/2022 24hr
Rum Creek: 11696 acres on 08/29/2022 @ 1800
Hog Creek 1: 32 acres on 08/29/2022 @ 1800



- Aerial Hazard
- Dip Site
- Helispot
- Helibase
- Division Break
- Logistics
- Incident Command Post
- Drop Point
- Staging Area
- Repair
- Dozer Push
- Communications
- Aerial Hazard
- Completed Dip Line
- Completed Hard Line
- Completed Road as Line
- Reference
- Access or Improved Road
- Other
- Repair Line
- Aerial Hazard
- Aerial Route
- Temporary Flight Restriction

Rum Creek-West Zone-Myrtle Creek HB

ICS 220 Frequencies
AIR / AIR Primary -TFR 128.1000
AIR / AIR-Rotor West 132.5000
AIR / AIR-Rotor East 119.0500
A/G 1-East 168.4250
A/G 2-East 168.4000
A/G Primary-West 167.1500
A/G Secondary-West 168.0375
Deck Freq: 163.1

FC Point Type	Label	Latitude WGS84	Longitude WGS84	DDM
Aerial Hazard		42° 36.106' N	123° 38.563' W	
Dip Site	Bailey Dip	42° 36.546' N	123° 35.319' W	
Dip Site	Island Dip	42° 38.795' N	123° 36.220' W	
Dip Site	Tyeo Dip	42° 39.428' N	123° 39.375' W	
Division Break		42° 38.939' N	123° 35.089' W	
Division Break		42° 32.319' N	123° 29.875' W	
Division Break		42° 35.611' N	123° 39.108' W	
Division Break		42° 36.407' N	123° 34.362' W	
Division Break		42° 32.666' N	123° 38.801' W	
Division Break		42° 39.102' N	123° 40.635' W	
Division Break		42° 38.518' N	123° 30.499' W	
Division Break		42° 35.760' N	123° 31.181' W	
Division Break		42° 33.571' N	123° 35.207' W	
Division Break		42° 33.575' N	123° 33.527' W	
Dozer Push		42° 33.558' N	123° 32.623' W	
Drop Point	31	42° 37.247' N	123° 37.710' W	
Drop Point	18	42° 36.997' N	123° 38.211' W	
Drop Point	11	42° 36.058' N	123° 38.858' W	
Drop Point	30	42° 36.678' N	123° 38.024' W	
Drop Point	20	42° 35.746' N	123° 31.399' W	
Drop Point	26	42° 36.920' N	123° 31.222' W	
Drop Point	22	42° 35.811' N	123° 32.343' W	
Drop Point	61	42° 38.986' N	123° 36.401' W	
Drop Point	63	42° 41.855' N	123° 36.013' W	
Drop Point	60	42° 38.979' N	123° 35.084' W	
Drop Point	40	42° 36.395' N	123° 34.816' W	
Drop Point	59	42° 38.908' N	123° 34.902' W	
Drop Point	50	42° 38.536' N	123° 30.338' W	
Drop Point	62	42° 39.789' N	123° 37.230' W	
Drop Point	10	42° 35.500' N	123° 38.841' W	
Drop Point	39	42° 36.760' N	123° 35.721' W	
Drop Point	9	42° 35.612' N	123° 39.013' W	
Drop Point	35	42° 34.753' N	123° 37.611' W	
Drop Point	36	42° 33.760' N	123° 36.543' W	
Drop Point	6	42° 37.217' N	123° 39.533' W	
Drop Point	38	42° 33.688' N	123° 34.616' W	
Drop Point	8	42° 35.893' N	123° 39.094' W	
Drop Point	23	42° 32.467' N	123° 30.066' W	
Drop Point	57	42° 39.213' N	123° 33.183' W	
Drop Point	21	42° 35.251' N	123° 30.972' W	
Drop Point	99	42° 33.682' N	123° 42.320' W	
Drop Point	37	42° 37.640' N	123° 36.720' W	
Drop Point	41	42° 33.538' N	123° 32.605' W	
Drop Point	42	42° 34.244' N	123° 32.595' W	
Helibase	Racetrack	42° 31.403' N	123° 28.846' W	
Helibase	Azalea	42° 46.871' N	123° 17.439' W	
Helispot	H2	42° 38.818' N	123° 36.075' W	
Helispot	H3	42° 35.500' N	123° 38.871' W	
Helispot	H50	42° 36.544' N	123° 31.658' W	
Helispot	H1	42° 37.239' N	123° 37.668' W	
Helispot	H90	42° 36.970' N	123° 36.058' W	
Helispot	H30	42° 39.057' N	123° 40.747' W	
Helispot	H32	42° 39.435' N	123° 39.380' W	
Helispot	H31	42° 39.340' N	123° 40.394' W	
Helispot	H5	42° 37.642' N	123° 39.850' W	
Helispot	H6	42° 38.345' N	123° 40.538' W	
Helispot	H4	42° 36.390' N	123° 38.980' W	
Helispot	H7	42° 37.790' N	123° 40.230' W	
Helispot	H9	42° 39.530' N	123° 43.980' W	
Helispot	H10	42° 40.150' N	123° 36.250' W	
Helispot	H39	42° 39.500' N	123° 35.400' W	
Helispot	H60	42° 34.670' N	123° 30.750' W	
Incident Command Post	ICP	42° 32.450' N	123° 24.829' W	
Repeater	CMD 7	42° 43.089' N	123° 35.843' W	
Repeater	CMD 8	42° 36.998' N	123° 38.523' W	
Repeater	CMD 9	42° 35.987' N	123° 21.950' W	
Staging Area		42° 31.421' N	123° 28.396' W	

Helibase Vicinity

