

Incident Action Plan

Page 1 of 7

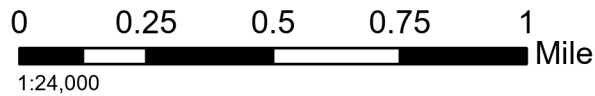
Rum Creek
ORMED000243

08/30/2022 24 hrs

Rum Creek: 11696 acres at 08/29/2022 @ 1800

Hog Creek 1: 32 acres on 08/26/2022 @ 2044

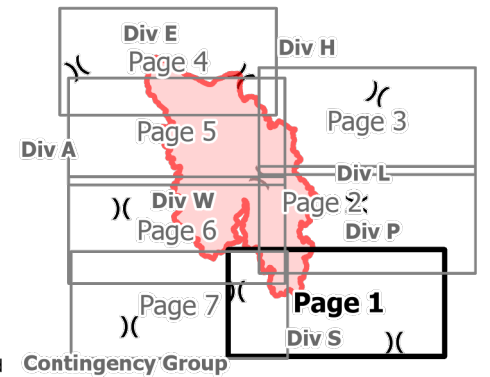
40' CONTOUR INTERVAL



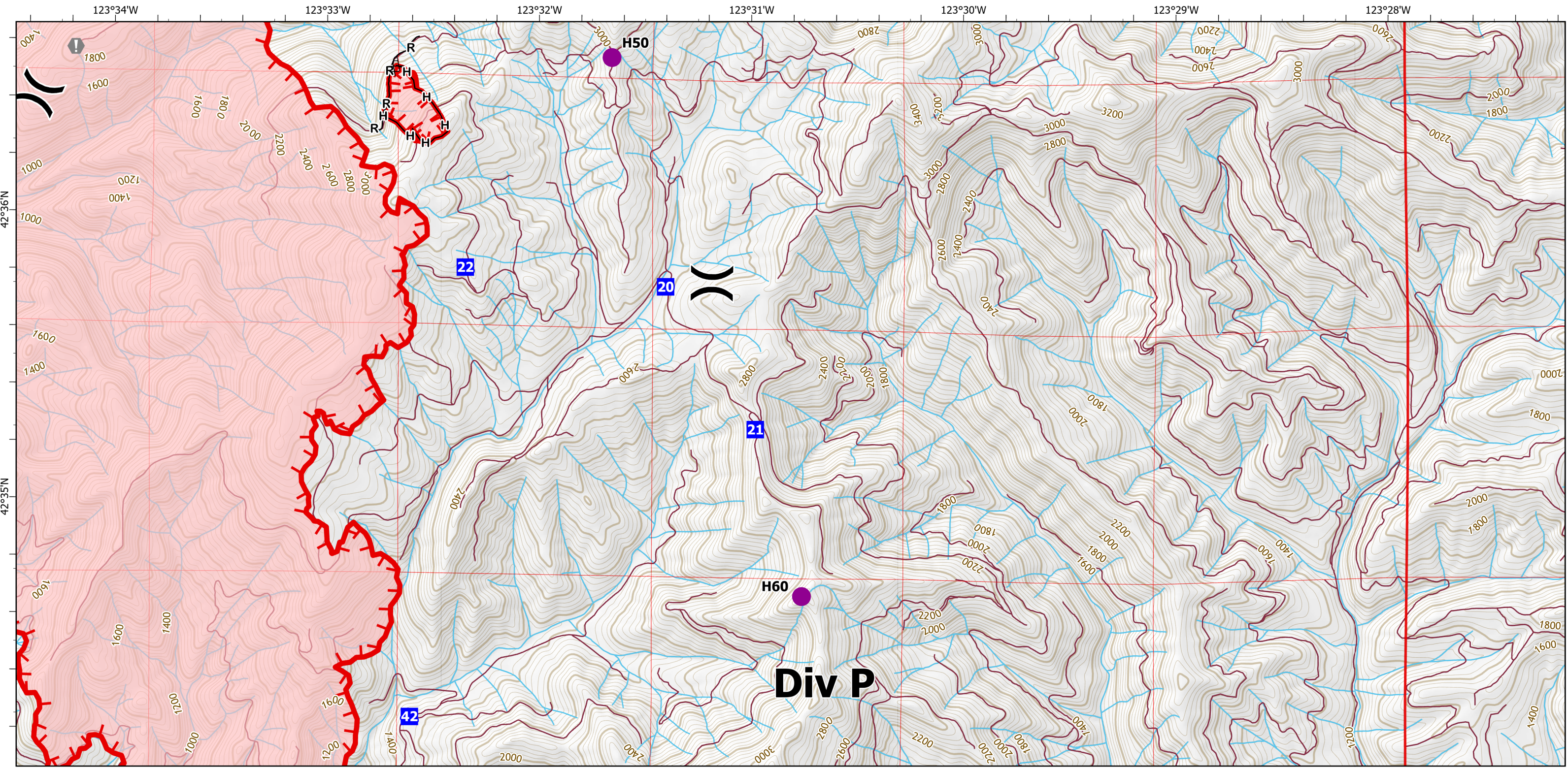
- | | |
|---------------------|------------------------------|
| Helispot | Fire Perimeter |
| Division Break | Other |
| Drop Point | Fire Edge (Field Collection) |
| Value at Risk | River |
| Mobile Weather Unit | Major Operational Roads |
| Safety Zone | |



08/29/2022 2155
Acres from DRTI
North American 1983 Datum. LatLong Grid



Contingency Group



Incident Action Plan

Page 2 of 7

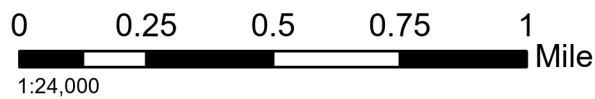
Rum Creek
ORMED000243

08/30/2022 24 hrs

Rum Creek: 11696 acres at 08/29/2022 @ 1800

Hog Creek 1: 32 acres on 08/26/2022 @ 2044

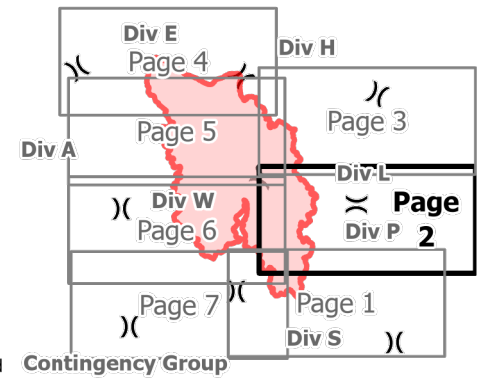
40' CONTOUR INTERVAL



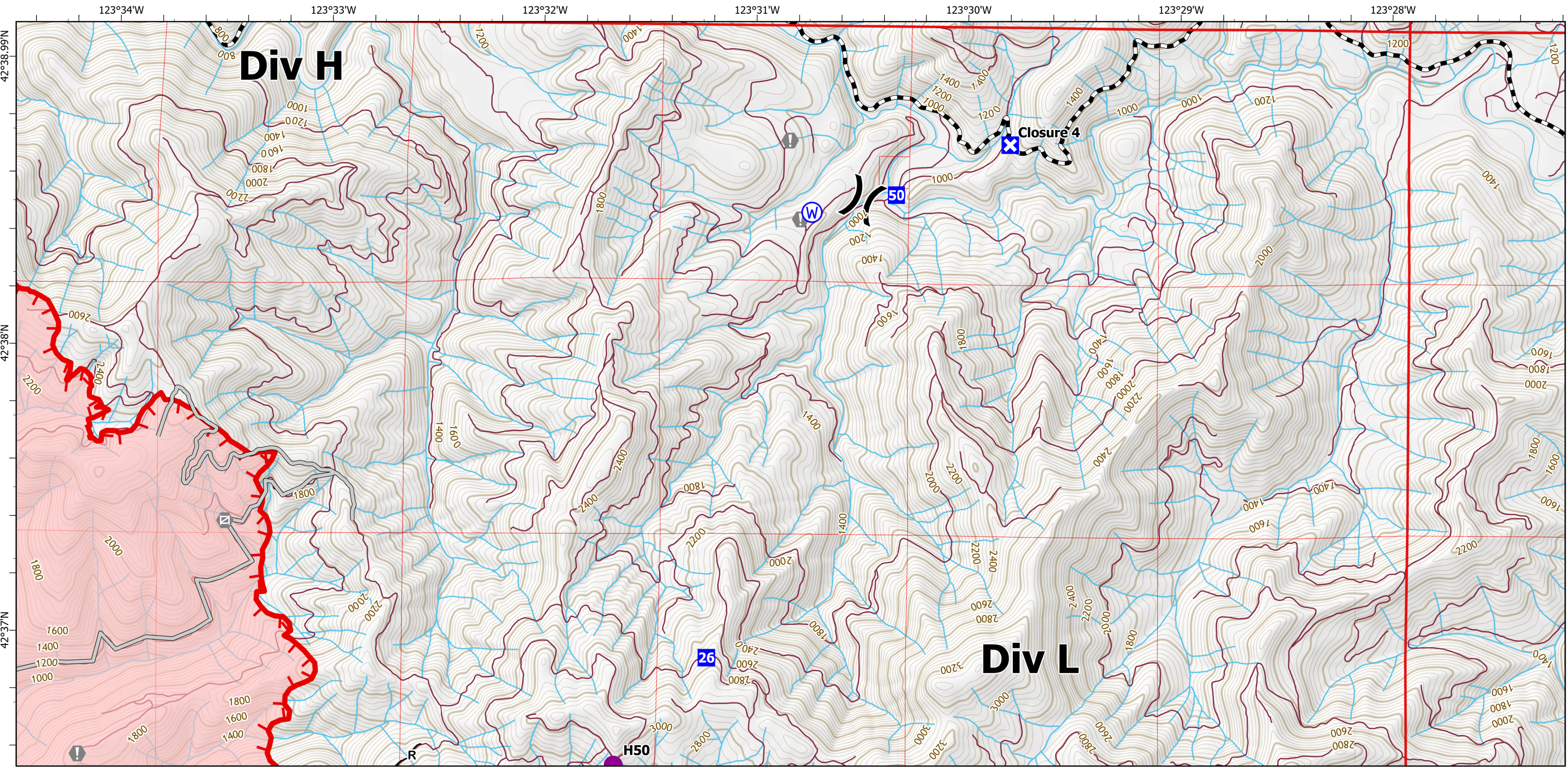
- Helispot
- Drop Point
- Fire Perimeter
- H50
- H60
- 20
- 21
- 22
- 42
- Value at Risk
- Completed Dozer Line
- Completed Hand Line
- Completed Road as Line
- Fire Edge (Field Collection)



08/29/2022 2155
Acres from DRTI
North American 1983 Datum. LatLong Grid



Contingency Group



Incident Action Plan

Page 3 of 7

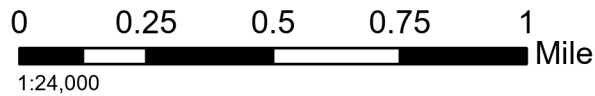
Rum Creek
ORMED000243

08/30/2022 24 hrs

Rum Creek: 11696 acres at 08/29/2022 @ 1800

Hog Creek 1: 32 acres on 08/26/2022 @ 2044

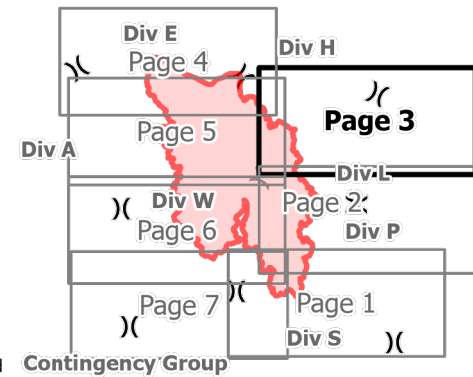
40' CONTOUR INTERVAL



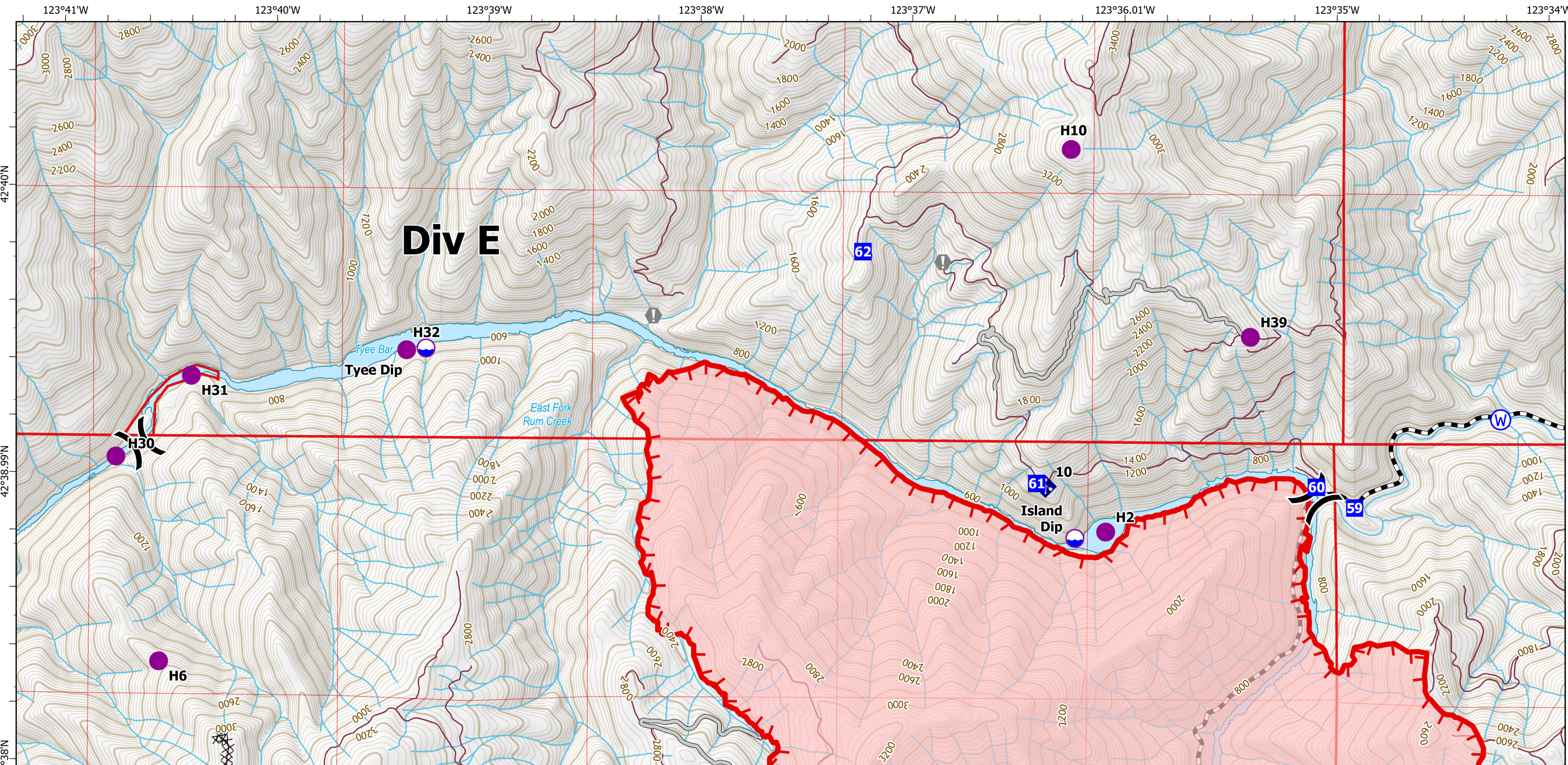
Helispot	Other	Completed Hand Line
Division Break	Gate	Completed Road as Line
Drop Point	Water Source	Access or Improved Road
Closure	Fire Perimeter	Fire Edge (Field Collection)
Value at Risk	Completed Dozer Line	Major Operational Roads



08/29/2022 2155
Acres from DRTI
North American 1983 Datum. LatLong Grid



Contingency Group



Incident Action Plan

Page 4 of 7

Rum Creek

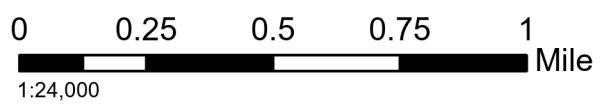
ORMED000243

08/30/2022 24 hrs

Rum Creek: 11696 acres at 08/29/2022 @ 1800

Hog Creek 1: 32 acres on 08/26/2022 @ 2044

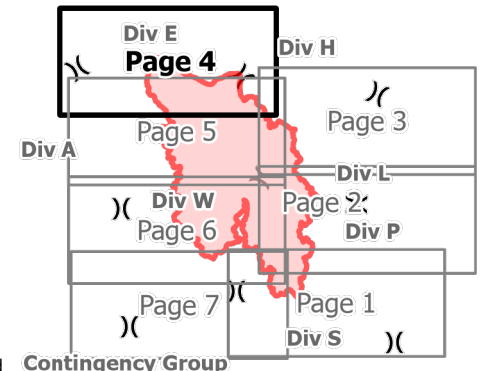
40' CONTOUR INTERVAL

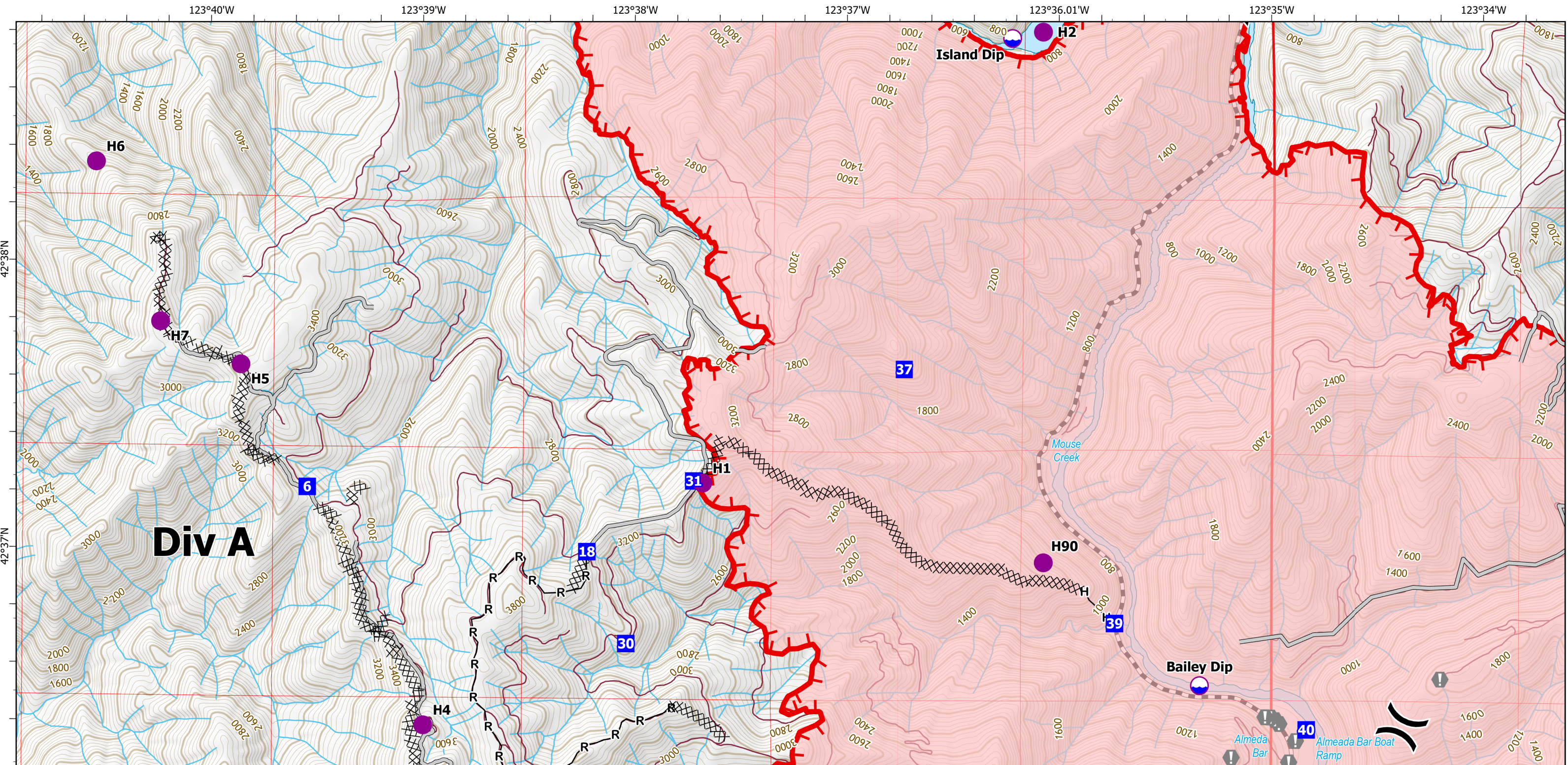


- | | | |
|----------------|-------------------------|------------------------------|
| Dip Site | Mobile Weather Unit | Fire Edge (Field Collection) |
| Helispot | Water Source | River |
| Division Break | Fire Perimeter | Major Operational Roads |
| Drop Point | Completed Dozer Line | Dip Site |
| Value at Risk | Access or Improved Road | |



08/29/2022 2156
Acres from DRTI
North American 1983 Datum. LatLong Grid





Incident Action Plan

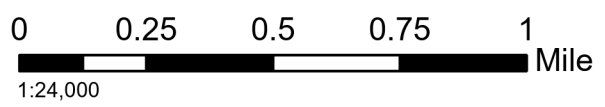
Page 5 of 7

Rum Creek
ORMED000243

08/30/2022 24 hrs

Rum Creek: 11696 acres at 08/29/2022 @ 1800
Hog Creek 1: 32 acres on 08/26/2022 @ 2044

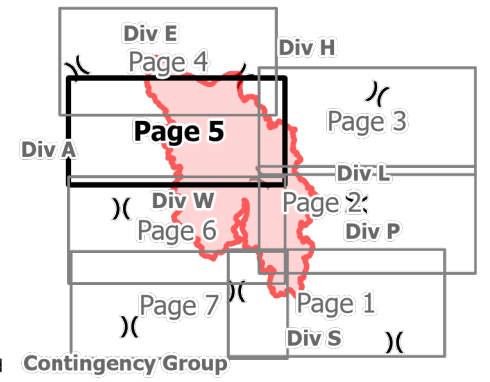
40' CONTOUR INTERVAL

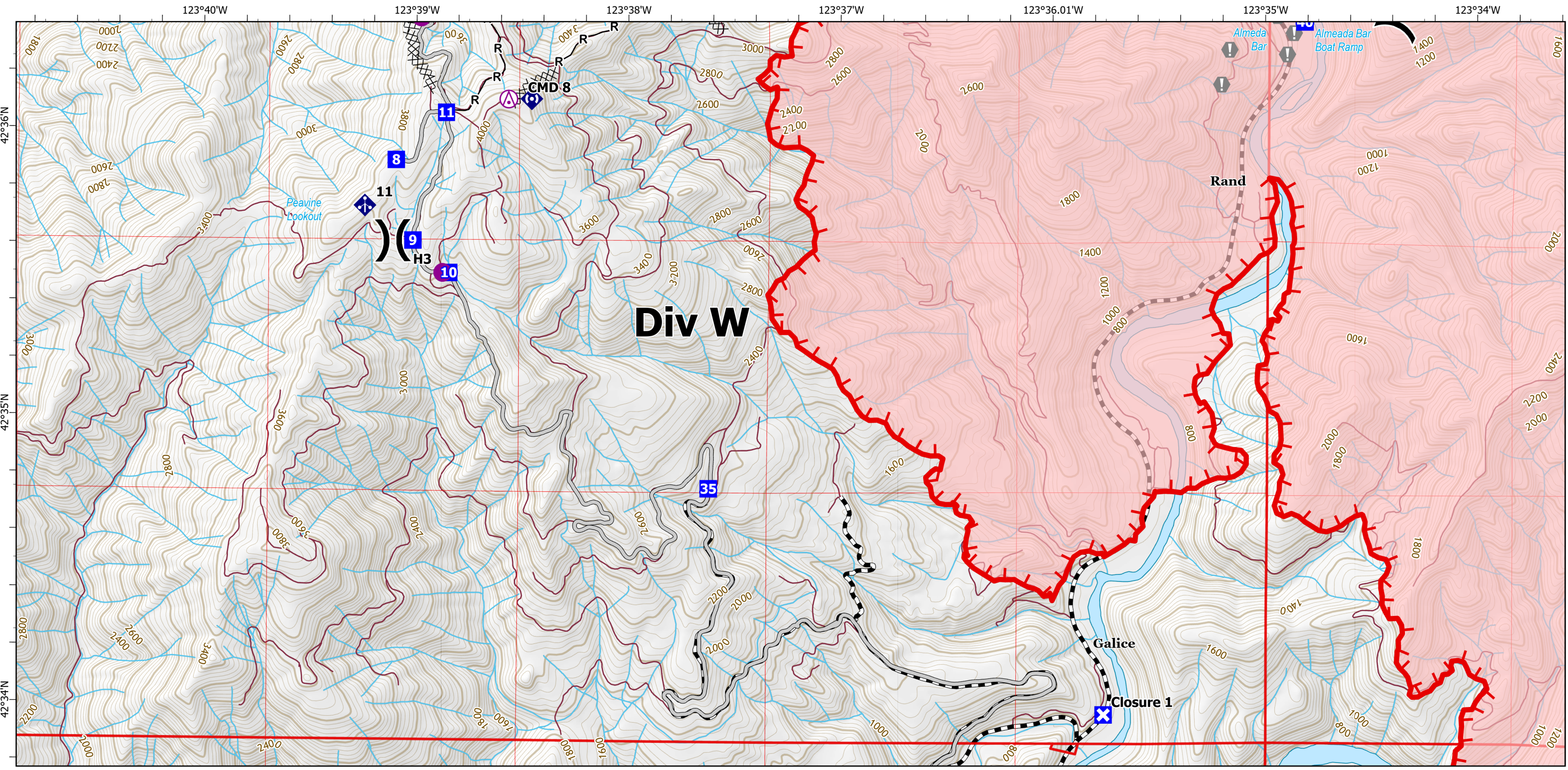


- | | | |
|----------------|------------------------|------------------------------|
| Dip Site | Gate | Access or Improved Road |
| Helispot | Fire Perimeter | Fire Edge (Field Collection) |
| Division Break | Completed Dozer Line | River |
| Drop Point | Completed Hand Line | Major Operational Roads |
| Value at Risk | Completed Road as Line | |



08/29/2022 2156
Acres from DRTI
North American 1983 Datum. LatLong Grid





Incident Action Plan

Page 6 of 7

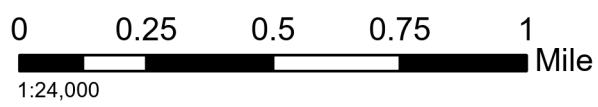
Rum Creek
ORMED000243

08/30/2022 24 hrs

Rum Creek: 11696 acres at 08/29/2022 @ 1800

Hog Creek 1: 32 acres on 08/26/2022 @ 2044

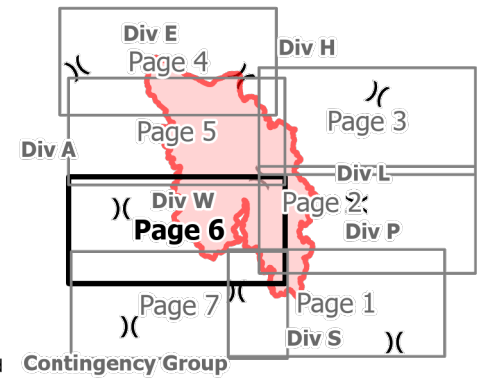
40' CONTOUR INTERVAL

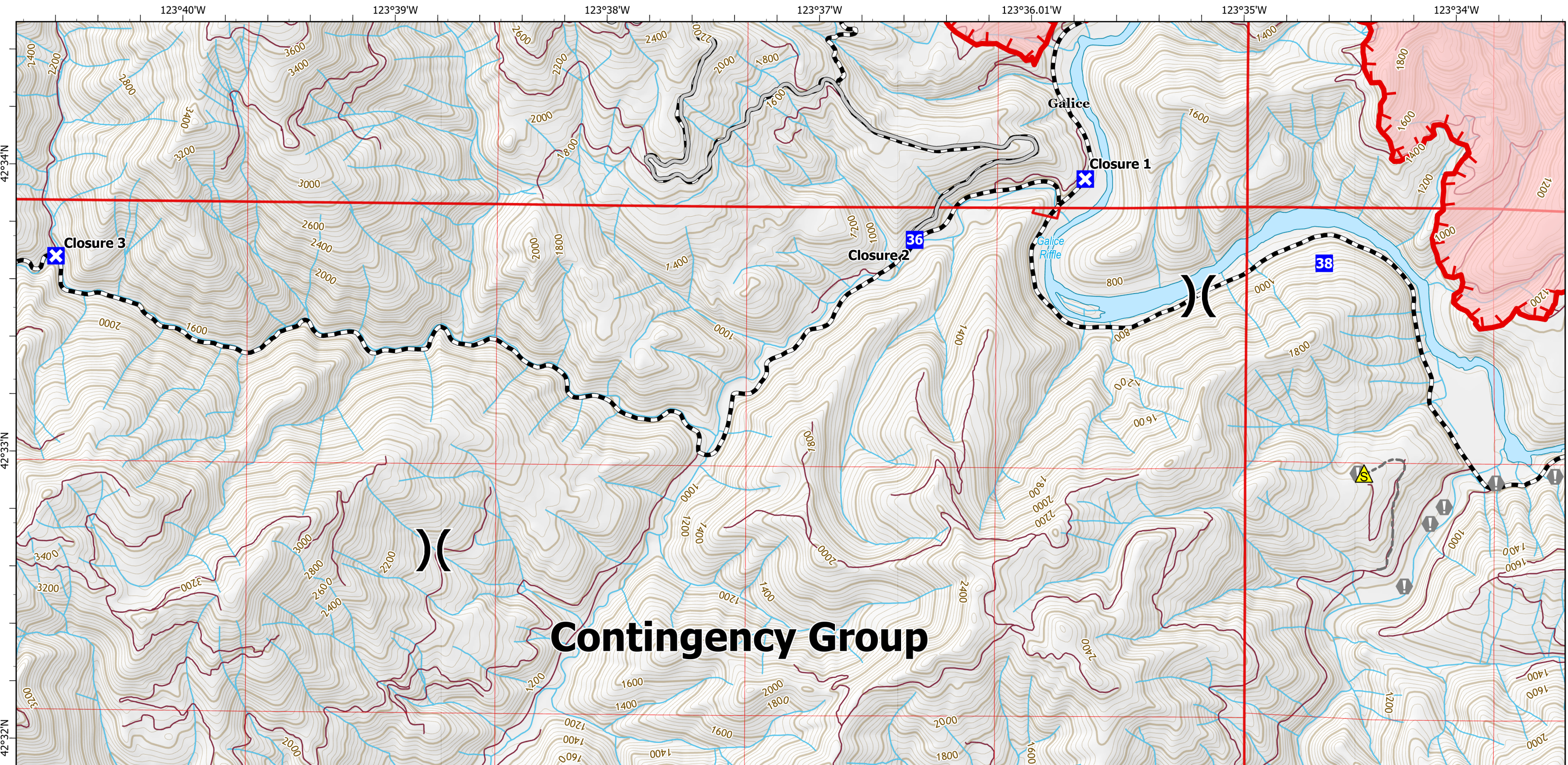


- | | | |
|----------------|------------------------|------------------------------|
| Aerial Hazard | Value at Risk | Access or Improved Road |
| Helispot | Mobile Weather Unit | Fire Edge (Field Collection) |
| Division Break | Fire Perimeter | River |
| Drop Point | Completed Dozer Line | Major Operational Roads |
| Closure | Completed Road as Line | Repeater |



08/29/2022 2156
Acres from DRTI
North American 1983 Datum. LatLong Grid





Incident Action Plan

Page 7 of 7

Rum Creek

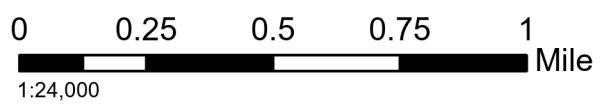
ORMED000243

08/30/2022 24 hrs

Rum Creek: 11696 acres at 08/29/2022 @ 1800

Hog Creek 1: 32 acres on 08/26/2022 @ 2044

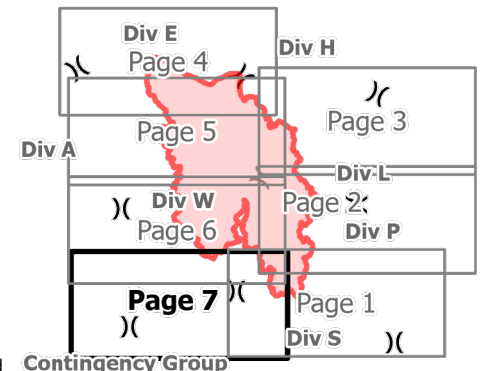
40' CONTOUR INTERVAL



- | | | | |
|--|----------------|--|------------------------------|
| | Division Break | | Access or Improved Road |
| | Drop Point | | Other |
| | Closure | | Fire Edge (Field Collection) |
| | Value at Risk | | River |
| | Safety Zone | | Major Operational Roads |
| | Fire Perimeter | | |



08/29/2022 2156
Acres from DRTI
North American 1983 Datum. LatLong Grid



Contingency Group