

123°40'W

123°35'W

123°30'W

123°25'W

**Transportation**  
 Rum Creek  
 ORMED000243  
 08/30/2022 24 hr

Rum Creek: 11696 acres on 08/29/2022 @ 1800  
 Hog Creek 1: 32 acres on 08/26/2022 @ 2044

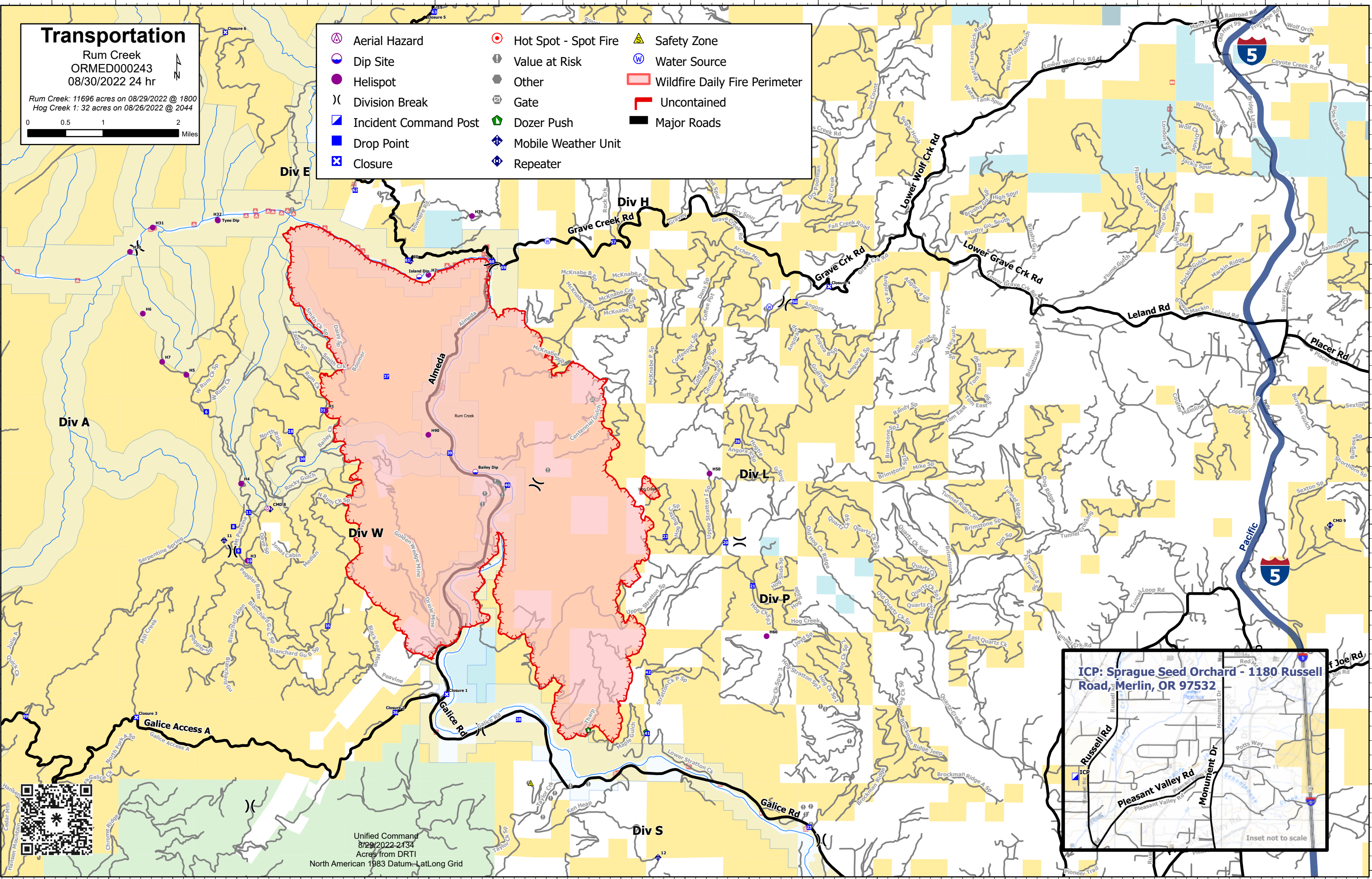
- |                       |                      |                               |
|-----------------------|----------------------|-------------------------------|
| Aerial Hazard         | Hot Spot - Spot Fire | Safety Zone                   |
| Dip Site              | Value at Risk        | Water Source                  |
| Helispot              | Other                | Wildfire Daily Fire Perimeter |
| Division Break        | Gate                 | Uncontained                   |
| Incident Command Post | Dozer Push           | Major Roads                   |
| Drop Point            | Mobile Weather Unit  |                               |
| Closure               | Repeater             |                               |

42°40'N

42°40'N

42°35'N

42°35'N



**ICP: Sprague Seed Orchard - 1180 Russell Road, Merlin, OR 97532**

Inset not to scale



Unified Command  
 8/29/2022-2134  
 Acres from DRT1  
 North American 1983 Datum - LatLong Grid

123°40'W

123°35'W

123°30'W

123°25'W