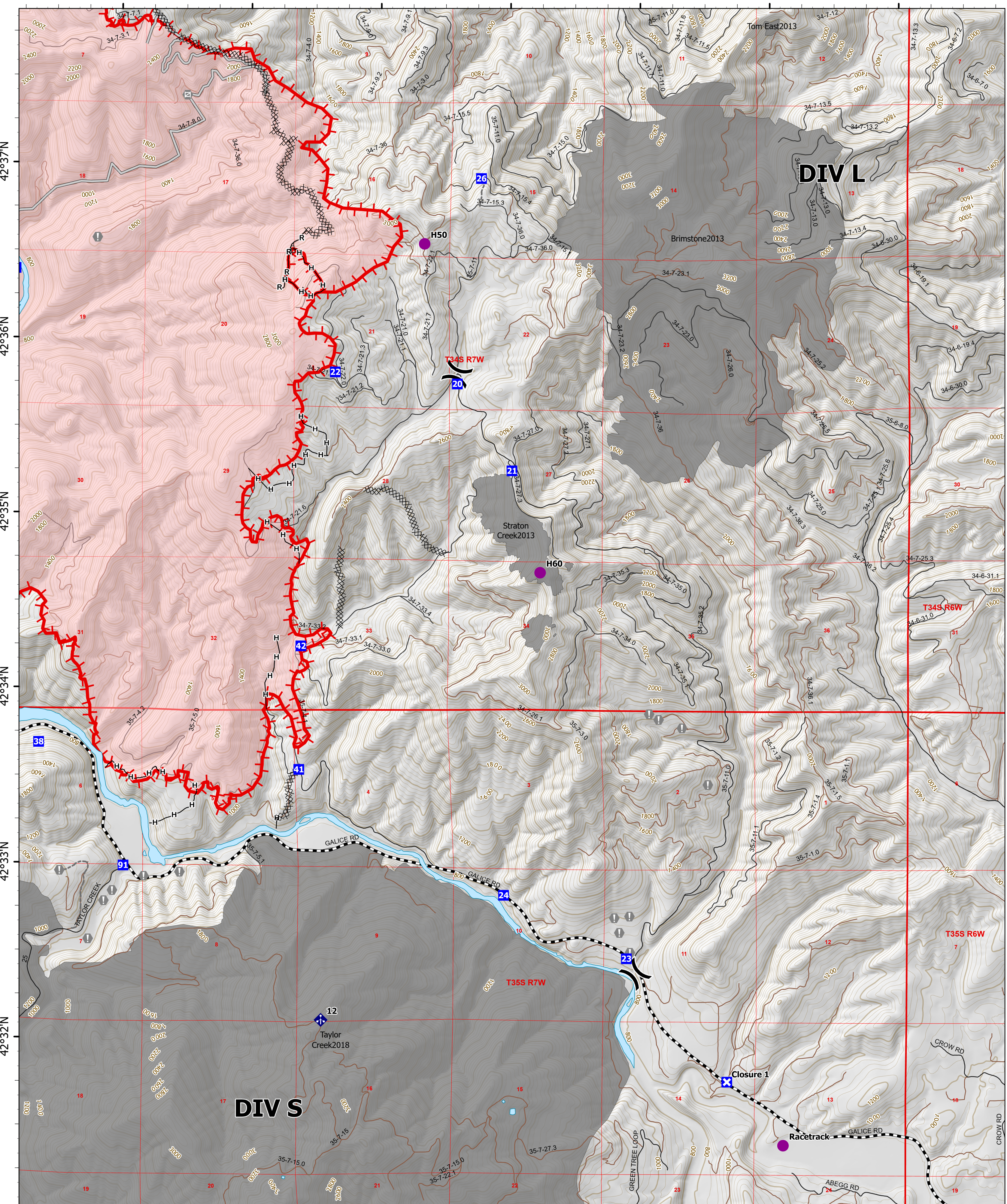


123°34'W 123°33'W 123°32'W 123°31'W 123°30'W 123°29'W 123°28'W

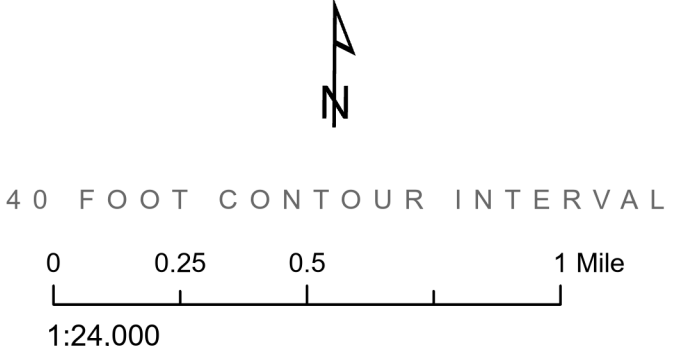


Operations

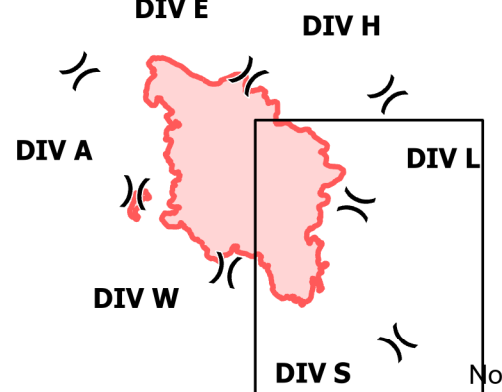
DIV P
 Rum Creek
 ORMED000243
 08/31/2022 24 hr

Rum Creek: 13994 acres on 8/30/2022 @ 2307
 Hog Creek 1: 32 acres on 8/30/2022 @ 2307

- | | | |
|---------------------------------|--------------------------------|-----------------------|
| ● Helispot | — Major Operations Roads | — Uncontained |
| ⌵ Division Break | — Label Point | — Paved; Highway exit |
| ■ Drop Point | — Perennial Lake | — All weather |
| ■ Closure | — Perennial Lake | — Dirt |
| ● Value at Risk | ⊗ Completed Dozer Line | — PLSS Townships |
| ● Other | H— Completed Hand Line | — PLSS Sections |
| ● Gate | R— Completed Road as Line | — Contour 200 |
| ● Mobile Weather Unit | — Access or Improved Road | — Contour 40 |
| — Wildfire Daily Fire Perimeter | — Other | |
| — Historical Fire Perimeter | — Fire Edge (Field Collection) | |



MAP VICINITY AND DIVISION BREAKS



Scan for FTP

 8/31/2022 0515
 IR Flight
 North American 1983 Datum. LatLong Grid