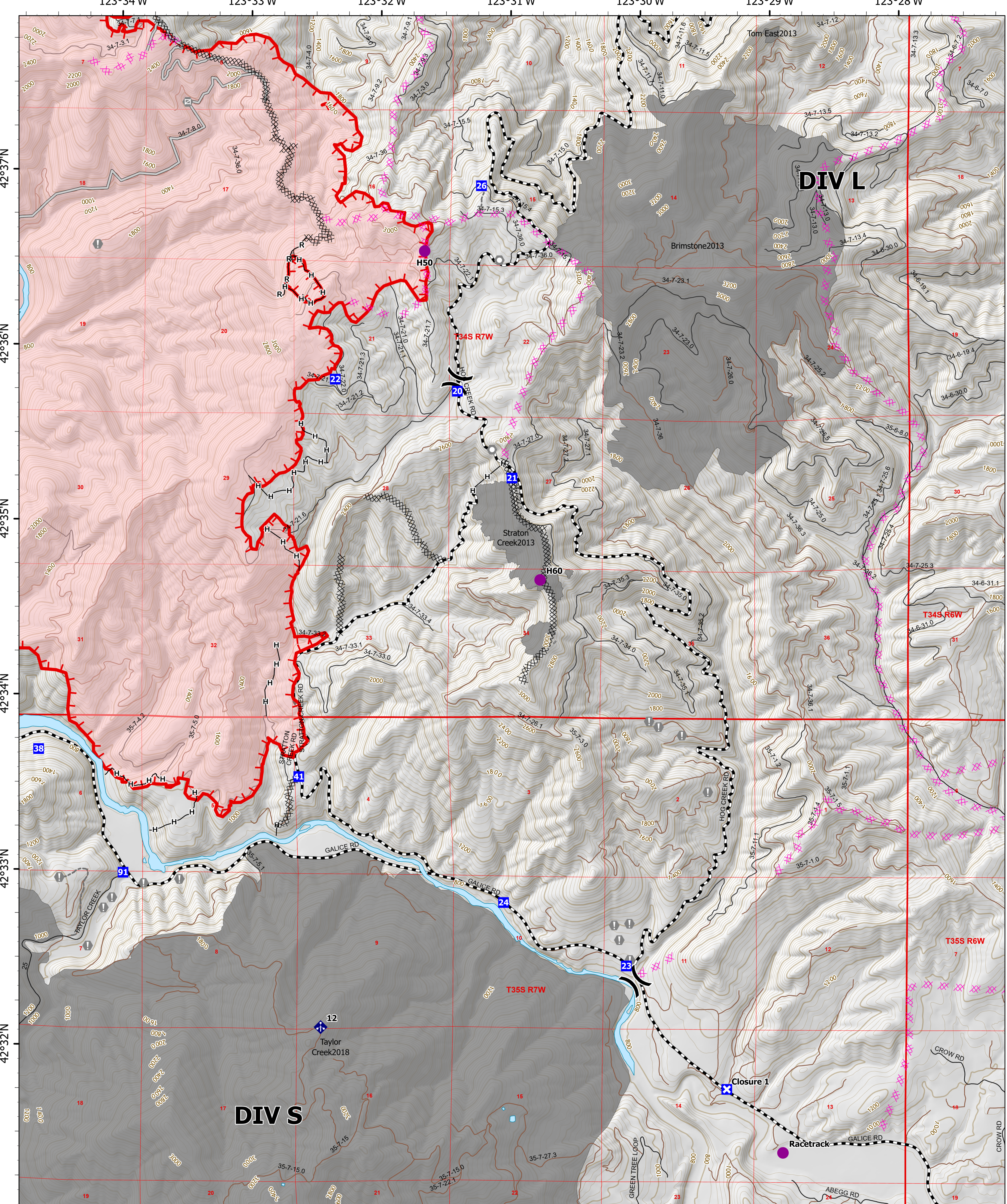


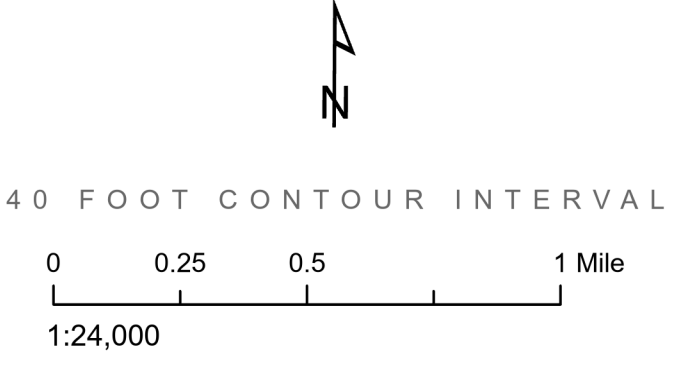
123°34'W 123°33'W 123°32'W 123°31'W 123°30'W 123°29'W 123°28'W



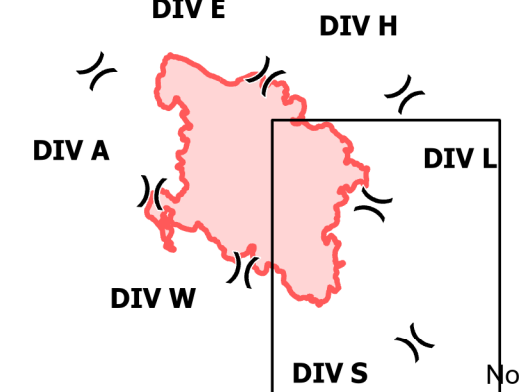
Operations

DIV P
Rum Creek
ORMED000243
09/01/2022 24 hr
Rum Creek: 15635 acres on 8/31/2022 @ 2048

- | | | |
|-----------------------|-----------------------------|-----------------------|
| ● Helispot | ▬ Historical Fire Perimeter | ▬ Other |
| ⌘ Division Break | ▬ Major Operations Roads | ▬ Uncontained |
| ■ Drop Point | ▬ Label Point | ▬ Paved; Highway exit |
| ◆ Closure | ▬ Perennial Lake | ▬ All weather |
| ⊕ Value at Risk | ▬ Perennial Lake | ▬ Dirt |
| ● Other | ⊗ Completed Dozer Line | ▬ PLS Sections |
| ○ Landmark | H Completed Hand Line | ▬ PLS Townships |
| ⊙ Gate | R Completed Road as Line | ▬ Contour 200 |
| ⊕ Mobile Weather Unit | ▬ Planned Dozer Line | ▬ Contour 40 |
| ▬ Wildfire Perimeter | ▬ Access or Improved Road | |



MAP VICINITY AND DIVISION BREAKS



Scan for FTP

 9/1/2022 0510
 IR Flight
 North American 1983 Datum. LatLong Grid