

123°42'W

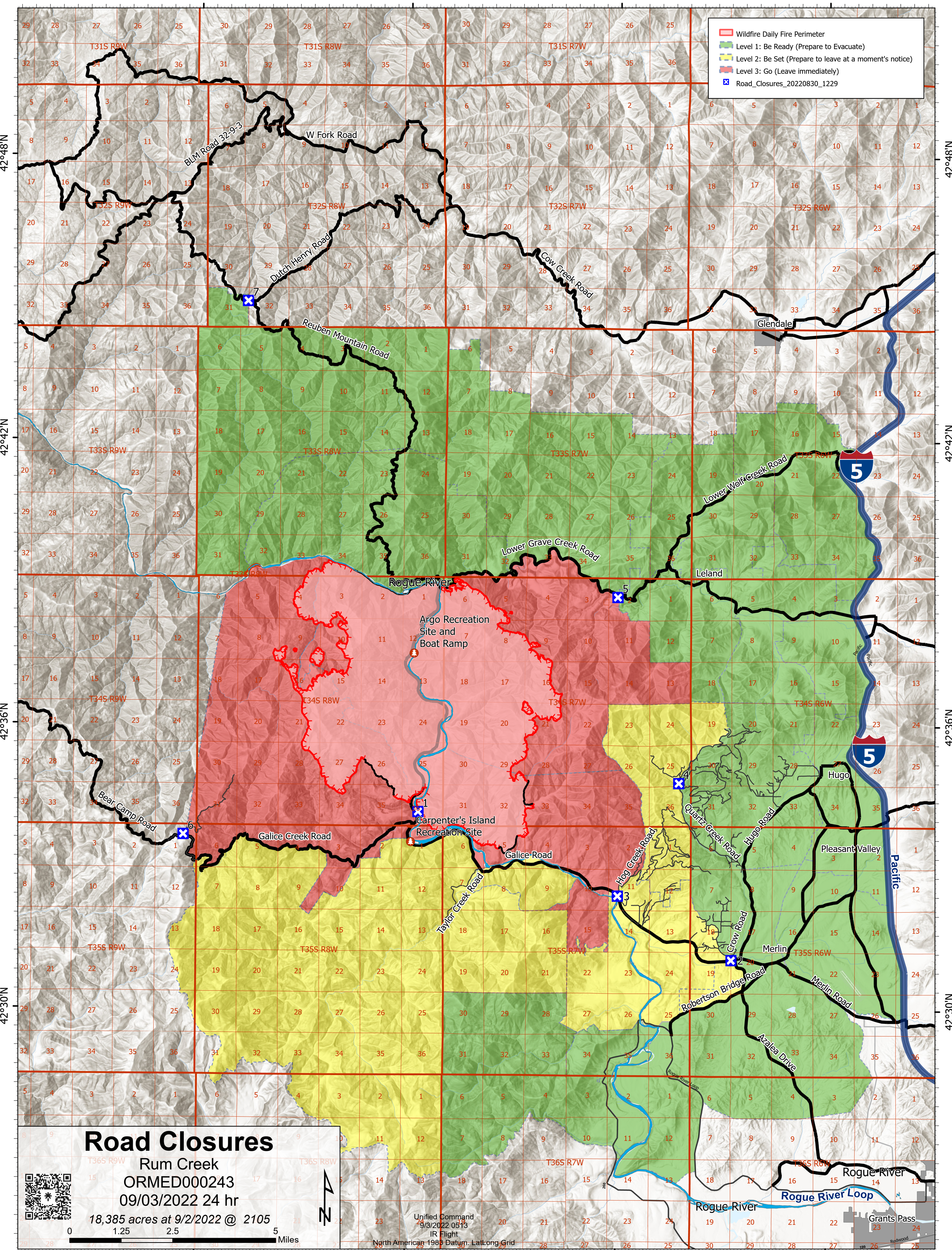
123°36.01'W

123°30'W

123°24'W

Legend

- Wildfire Daily Fire Perimeter
- Level 1: Be Ready (Prepare to Evacuate)
- Level 2: Be Set (Prepare to leave at a moment's notice)
- Level 3: Go (Leave immediately)
- Road_Closures_20220830_1229



Road Closures

Rum Creek
 ORMED000243
 09/03/2022 24 hr

18,385 acres at 9/2/2022 @ 2105
 1.25 2.5 5 Miles



Unified Command
 9/3/2022 0513
 IR Flight

North American 1983 Datum: Lallong Grid

123°42'W

123°36.01'W

123°30'W

123°24'W