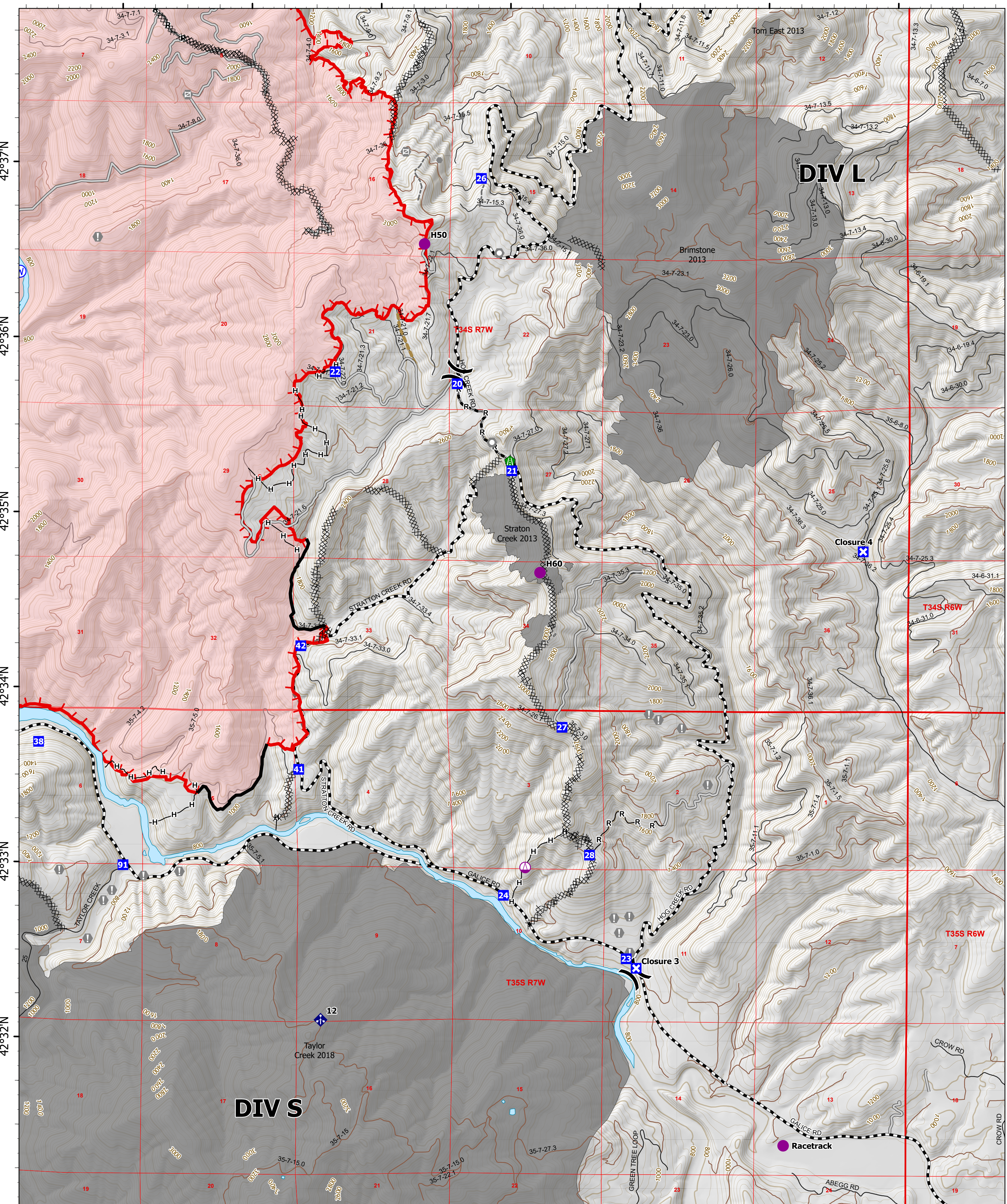


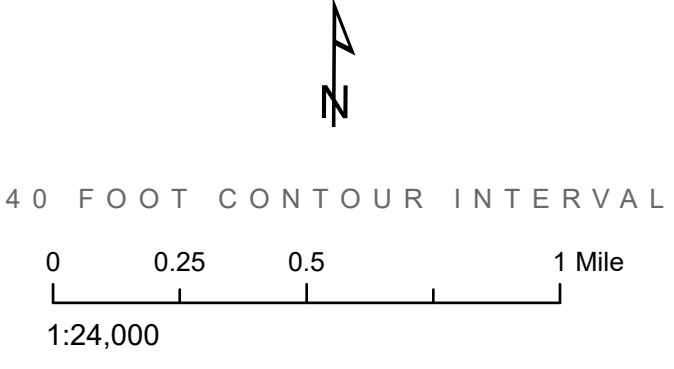
123°34'W 123°33'W 123°32'W 123°31'W 123°30'W 123°29'W 123°28'W



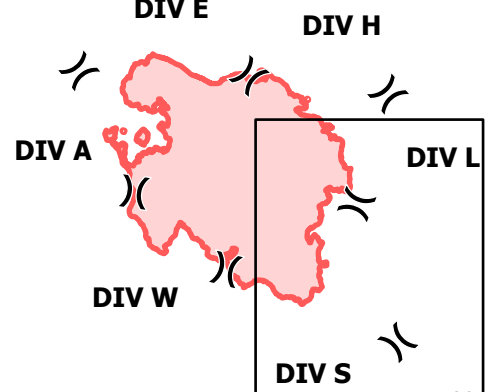
Operations

DIV P EAST
 Rum Creek
 ORMED000243
 09/03/2022 24 hr
 18,385 acres on 9/2/2022 @ 2105 PDT

- | | | |
|------------------------|----------------------|---------------------------|
| Wildfire Perimeter | Closure | Completed Road as Line |
| Paved; Highway exit | Value at Risk | Access or Improved Road |
| All weather | Landmark | Other |
| Dirt | Gate | Road Repair |
| Major Operations Roads | Road Repair | Contained |
| Helispot | Mobile Weather Unit | Uncontained |
| Sling Site | Water Source | River |
| Division Break | Completed Dozer Line | Historical Fire Perimeter |
| Drop Point | Completed Hand Line | |



MAP VICINITY AND DIVISION BREAKS



09/02/2022 2343
 IR Flight
 North American 1983 Datum. LatLong Grid