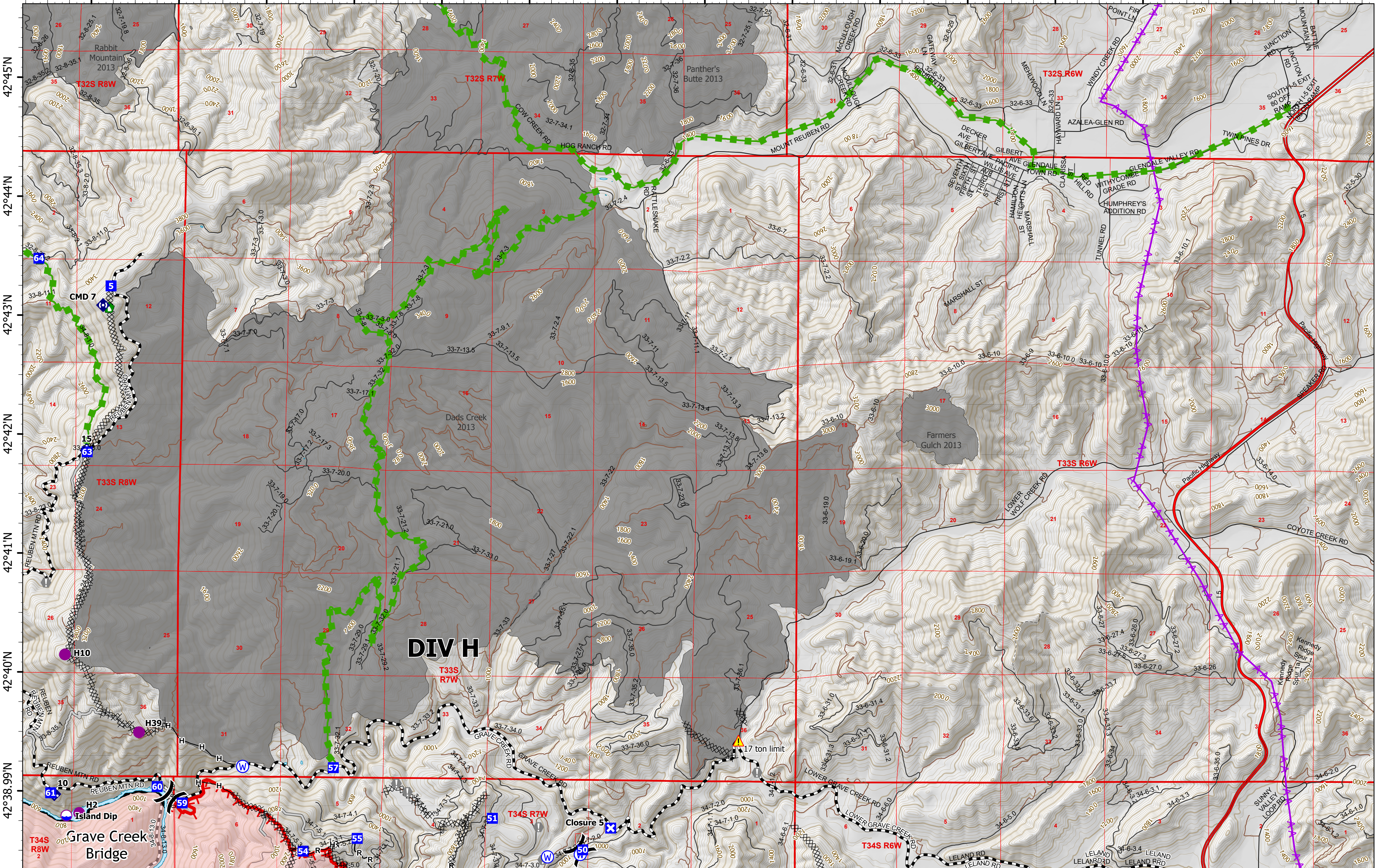


123°36.01'W 123°35'W 123°34'W 123°33'W 123°32'W 123°31'W 123°30'W 123°29'W 123°28'W 123°27'W 123°26'W 123°25'W 123°24'W 123°23'W 123°22'W

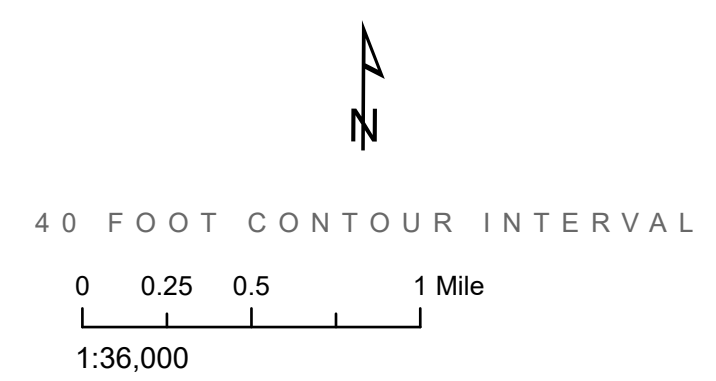


# Operations

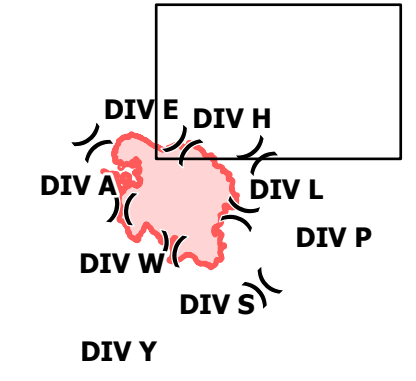
DIV H  
 Rum Creek  
 ORMED000243  
 09/04/2022 24 hr

18,966 acres on 9/3/2022 @ 2035 PDT

- |                                   |                      |                           |
|-----------------------------------|----------------------|---------------------------|
| Wildfire Perimeter                | Division Break       | Completed Road as Line    |
| Interstate; Highway               | Drop Point           | Access or Improved Road   |
| Paved; Highway exit               | Closure              | Other                     |
| All weather                       | Value at Risk        | Escape Route              |
| Dirt                              | Dozer Push           | Aerial Hazard             |
| In UGB; Paved - Secondary Display | Mobile Weather Unit  | River                     |
| 4wd trail                         | Repeater             | Historical Fire Perimeter |
| Major Operations Roads            | Hazard               | Contained                 |
| Dip Site                          | Water Source         | Uncontained               |
| Helispot                          | Completed Dozer Line |                           |
|                                   | Completed Hand Line  |                           |



MAP VICINITY AND DIVISION BREAKS



09/03/2022 2255  
 IR Flight  
 North American 1983 Datum, LatLong Grid