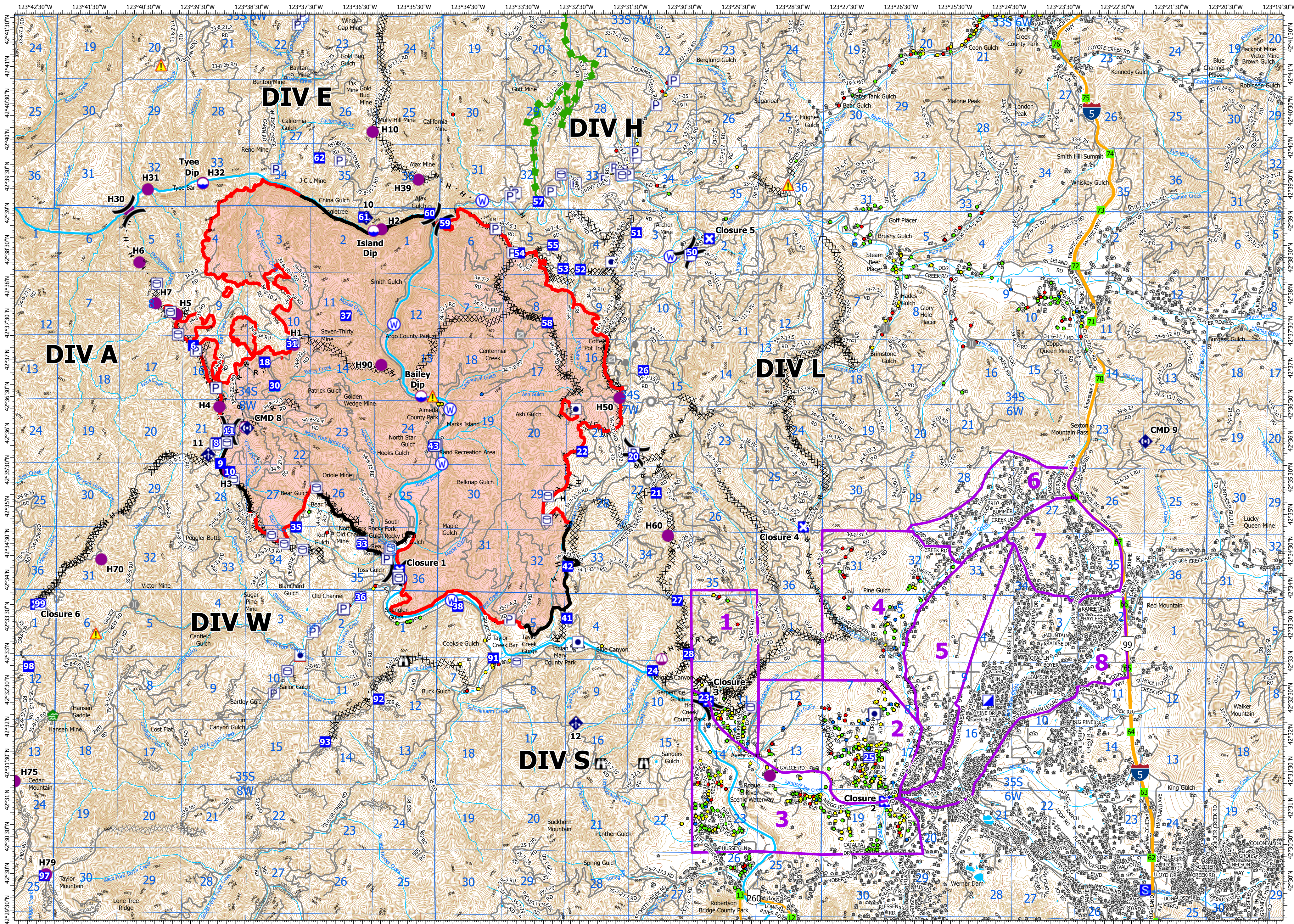
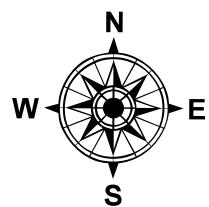
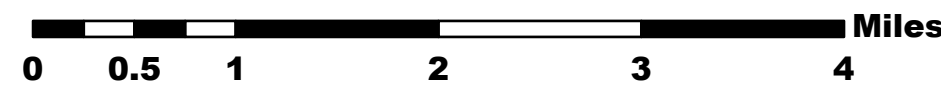


RUM CREEK FIRE ORMED000243

STRUCTURE OPERATIONS 9/3/2022 22:47



GIS ACRES: 18,966
PERIMETER: IR 9/3/22 @ 20:35
SCALE: 1:48,000 ON ARCH C
NAD 1983 UTM ZONE 10N



Structures	Completed Burnout	Planned Road as Line	Retardant Drop	Aerial Hazard	Gate	Dozer Push
Mileposts	Completed Dozer Line	Planned Secondary Line	Route	Airstrip or Airport	Fire Station	Culvert
State Highways	Completed Fuel Break	Access or Improved Road	UAS Launch and Recovery Zone	Check Point	Drop Point	Clean Up Area
Roads	Completed Hand Line	Fence	Temporary Flight Restriction	Mobile Retardant Base	Closure	Mobile Weather Unit
Transmission Lines	Completed Mixed Construction Line	Highlighted Feature	Fire Edge	Helipost	Camp	Internet Access
Railroads	Completed Plow Line	Management Action Point	Contained Line	Helibase	Staging Area	Repeater
Water	Completed Road as Line	Other	Area Covered by IR Flight	Sling Site	Lookout	Resource Location
PLSS Sections	Planned Burnout	Repair Line	Cloud Cover	Unimproved Landing Area	Road Repair	Hazard
200 Ft. Index Contours	Planned Dozer Line	Road Repair	IR Heat Perimeter	Division Break	Retardant in Avoidance Area	Repair Point
40 Ft. Contours	Planned Fuel Break	Escape Route	IR Intense Heat	Value at Risk	Landing or Log Deck	Water Source
Driveways	Planned Hand Line	Water Drop	IR Scattered Heat	Other	Hazard Tree	Restricted Water Source
Structure Blocks	Planned Mixed Construction Line	Foam Drop	Zone Break	Landmark	Fence - Cut/Damaged	

Evacuation Zones

- Level 1: Be Ready
- Level 2: Be Set
- Level 3: Go

Structure Triage

- Low Risk
- Medium Risk
- High Risk
- Extreme Risk

