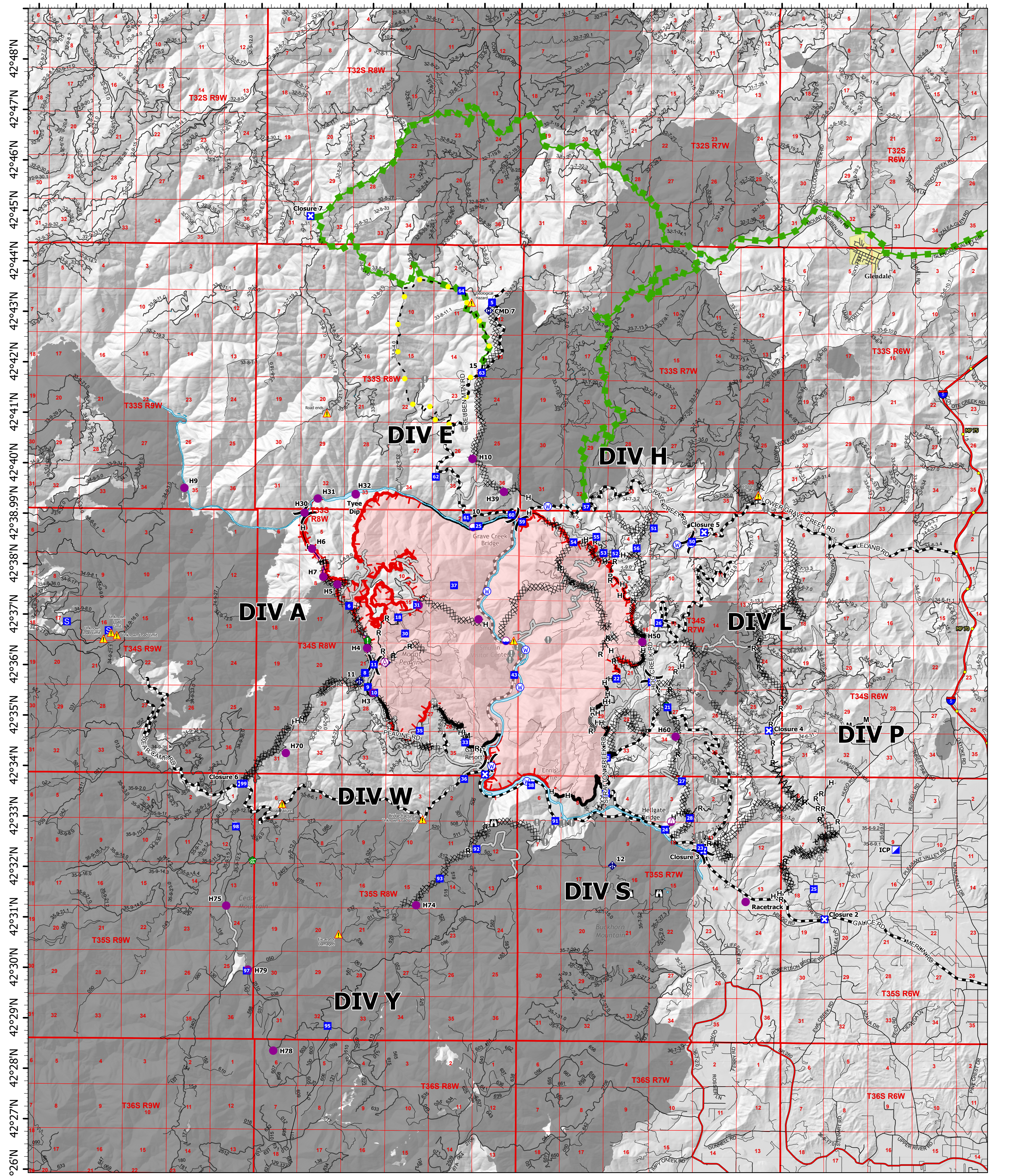


123°48'W 123°46'W 123°44'W 123°42'W 123°40'W 123°38'W 123°36.01'W 123°34'W 123°32'W 123°30'W 123°28'W 123°26'W 123°24'W

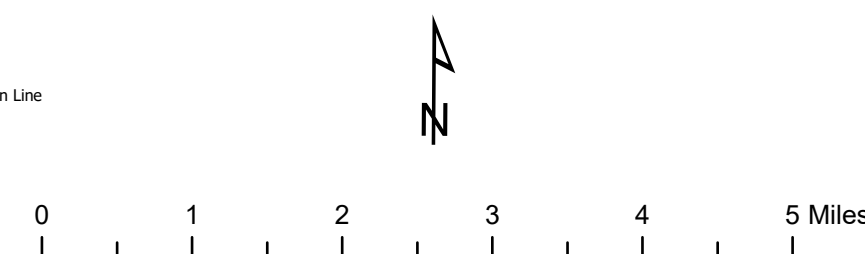


Operations

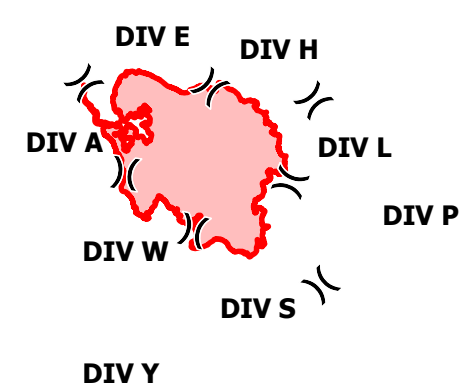
Rum Creek
ORMED000243
09/05/2022 24 hr
19495 acres on 9/4/2022 @ 2027 PDT

- Wildfire Perimeter
- Interstate; Highway
- Paved; Highway exit
- All weather
- Dirt
- In UGB; Paved - Secondary Display
- 4wd trail
- Major Operations Roads
- Milepost Marker
- Aerial Hazard
- Dip Site
- Helispot
- Sling Site
- Division Break
- Incident Command Post
- Drop Point
- Closure
- Staging Area
- Lookout
- Value at Risk
- Other
- Landmark
- Gate
- Bridge
- Water Development or Draft Site
- Road Repair
- Resource Location
- Landing or Log Deck
- Mobile Weather Unit
- Repeater
- Hazard
- Water Source
- Completed Dozer Line
- Completed Fuel Break
- Completed Hand Line
- Completed Mixed Construction Line
- Completed Road as Line
- Access or Improved Road
- Highlighted Feature
- Other
- Repair Line
- Escape Route
- Retardant Drop
- Historical Fire Perimeter

40 FOOT CONTOUR INTERVAL



MAP VICINITY & TRAVEL ACCESS



Scan for FTP
QR Code
09/05/2022 0040
IR Flight
North American 1983 Datum. LatLong Grid