

123°42'W

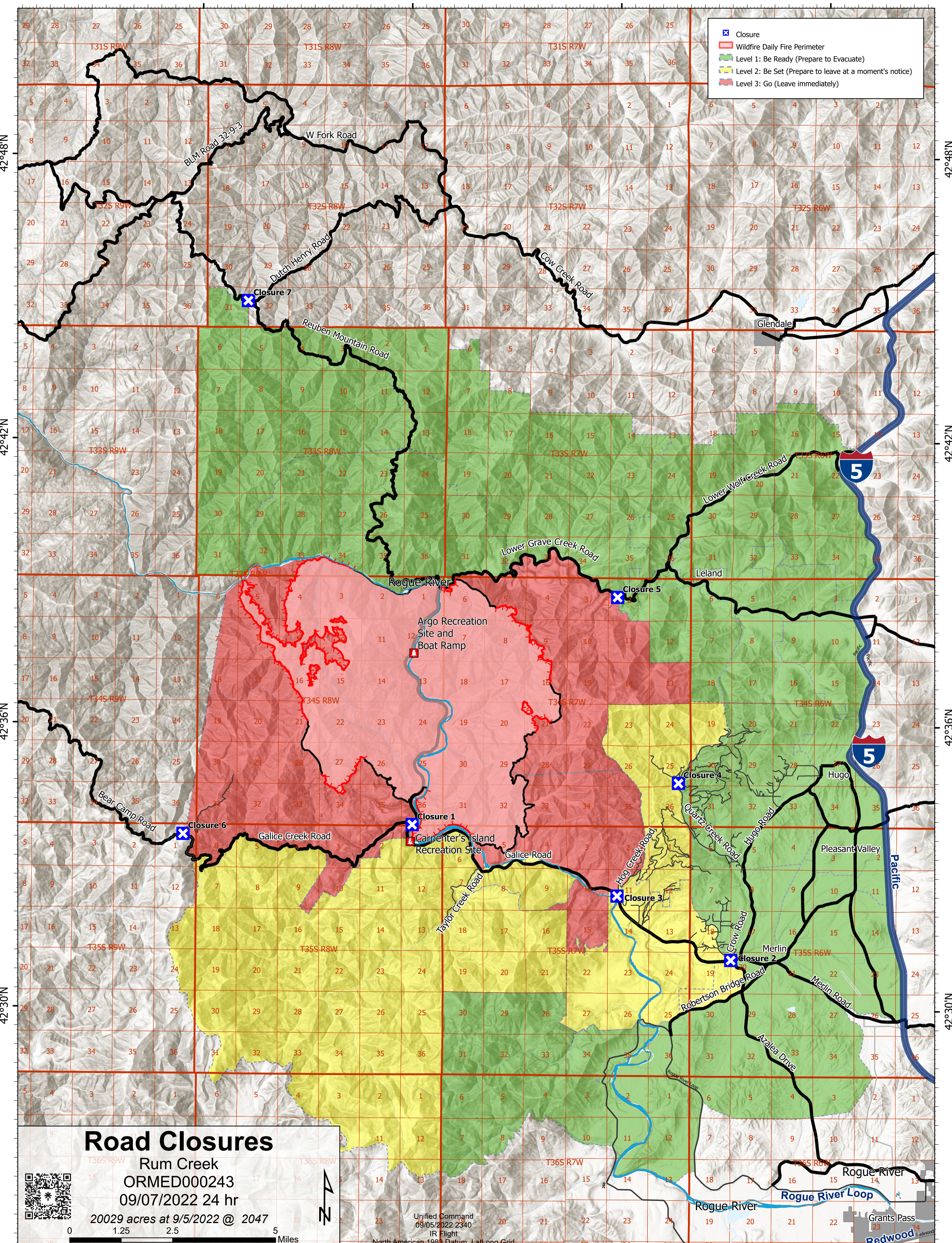
123°36.01'W

123°30'W

123°24'W

Legend

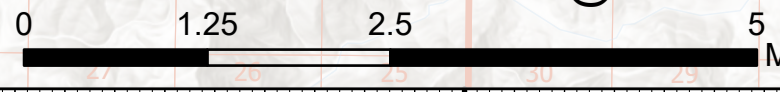
- Closure
- Wildfire Daily Fire Perimeter
- Level 1: Be Ready (Prepare to Evacuate)
- Level 2: Be Set (Prepare to leave at a moment's notice)
- Level 3: Go (Leave immediately)



Road Closures

Rum Creek
ORMED000243
09/07/2022 24 hr

20029 acres at 9/5/2022 @ 2047



Unified Command
09/05/2022 2340
IR Flight

North American 1983 Datum, LatLong Grid

123°42'W

123°36.01'W

123°30'W

123°24'W