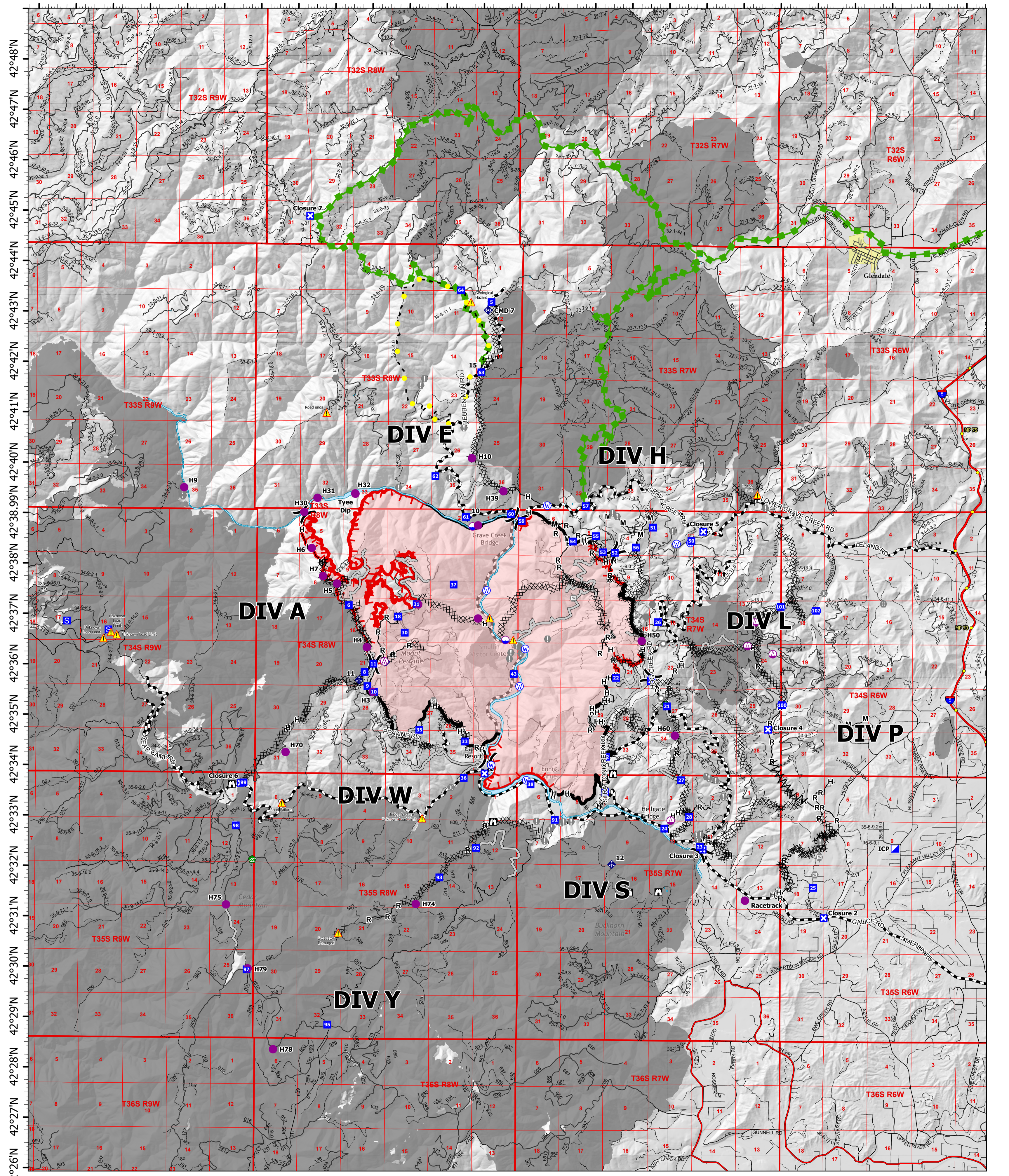


123°48'W 123°46'W 123°44'W 123°42'W 123°40'W 123°38'W 123°36.01'W 123°34'W 123°32'W 123°30'W 123°28'W 123°26'W 123°24'W



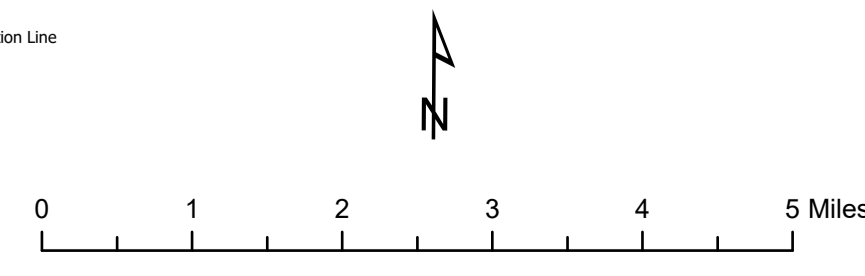
42°48'N 42°47'N 42°46'N 42°45'N 42°44'N 42°43'N 42°42'N 42°41'N 42°40'N 42°38.99'N 42°37'N 42°36'N 42°35'N 42°34'N 42°33'N 42°32'N 42°31'N 42°30'N 42°29'N 42°28'N 42°27'N 42°26'N

# Operations

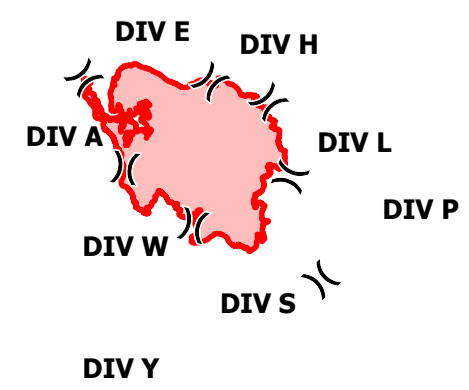
Rum Creek  
ORMED000243  
09/07/2022 24 hr  
20029 acres on 9/5/2022 @ 2047 PDT

- Wildfire Perimeter
- Roads
- Interstate; Highway
- Paved; Highway exit
- All weather
- Dirt
- In UGB; Paved - Secondary Display
- 4wd trail
- Major Operations Roads
- Milepost Marker
- Aerial Hazard
- Dip Site
- Helispot
- Sling Site
- Division Break
- Incident Command Post
- Drop Point
- Closure
- Staging Area
- Value at Risk
- Other
- Landmark
- Gate
- Water Development or Draft Site
- Landing or Log Deck
- Mobile Weather Unit
- Repeater
- Hazard
- Water Source
- Completed Dozer Line
- Completed Fuel Break
- Completed Hand Line
- Lookout
- Completed Mixed Construction Line
- Completed Road as Line
- Access or Improved Road
- Highlighted Feature
- Other
- Escape Route
- Historical Fire Perimeter
- City Limits
- River

40 FOOT CONTOUR INTERVAL



MAP VICINITY & TRAVEL ACCESS



09/06/2022 2230  
IR Flight  
North American 1983 Datum, LatLong Grid