

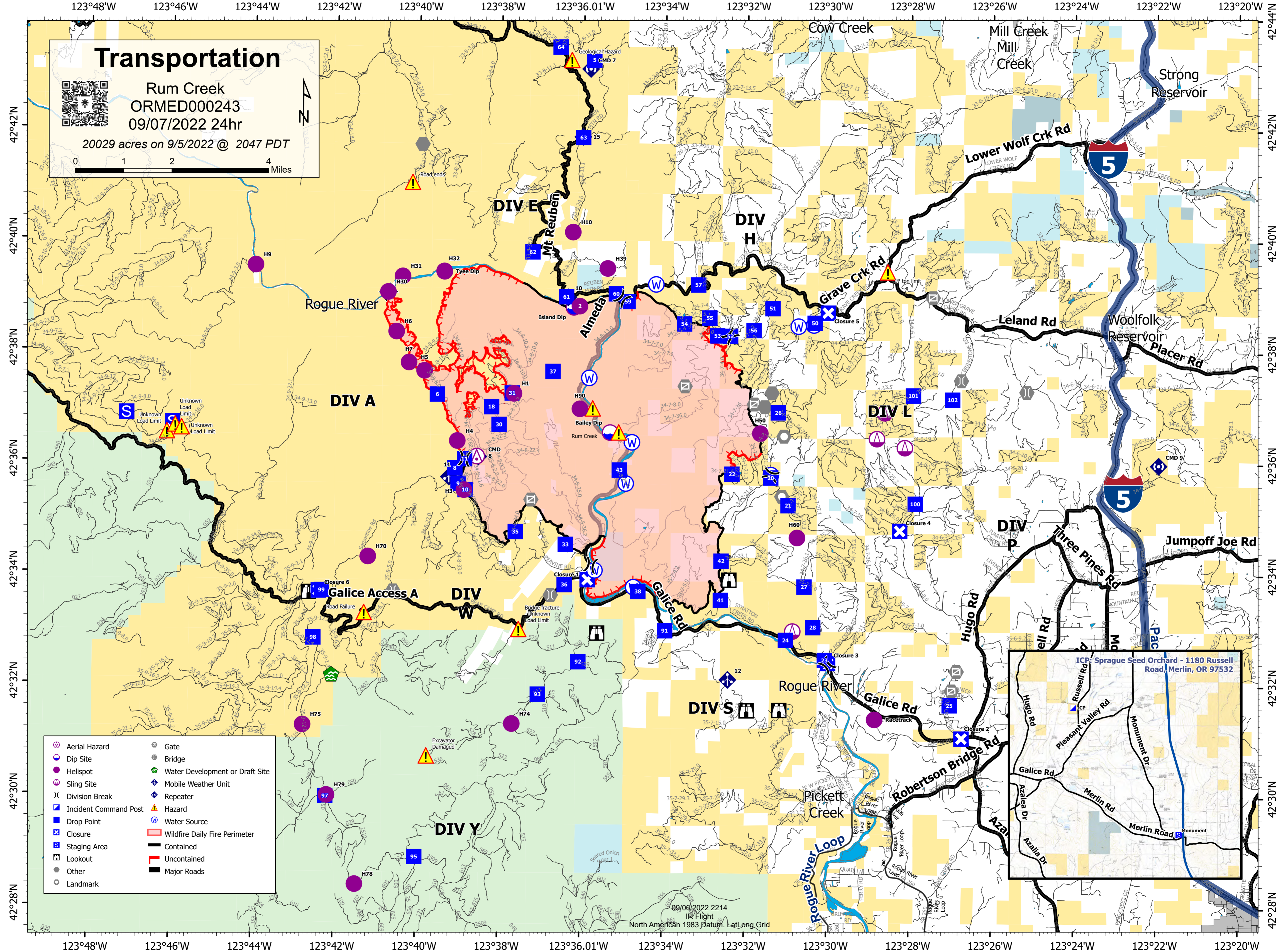
Transportation

Rum Creek

ORMED000243

09/07/2022 24hr

20029 acres on 9/5/2022 @ 2047 PDT



- | | | | |
|--|-----------------------|--|---------------------------------|
| | Aerial Hazard | | Gate |
| | Dip Site | | Bridge |
| | Helispot | | Water Development or Draft Site |
| | Sling Site | | Mobile Weather Unit |
| | Division Break | | Repeater |
| | Incident Command Post | | Hazard |
| | Drop Point | | Water Source |
| | Closure | | Wildfire Daily Fire Perimeter |
| | Staging Area | | Contained |
| | Lookout | | Uncontained |
| | Other | | Major Roads |
| | Landmark | | |

ICP: Sprague Seed Orchard - 1180 Russell Road, Merlin, OR 97532

09/06/2022 2214
IR Flight
North American 1983 Datum, Lat/Long Grid