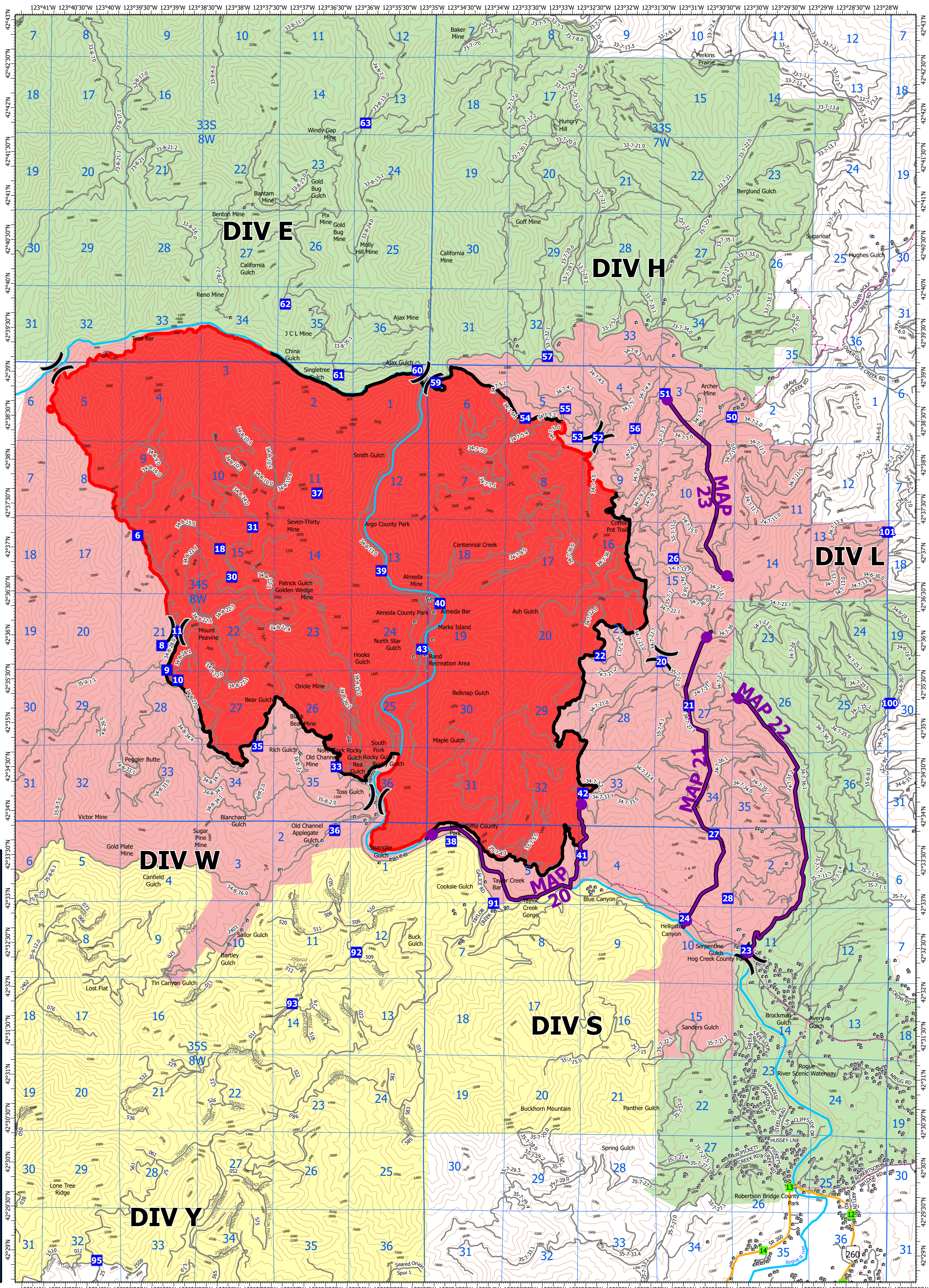
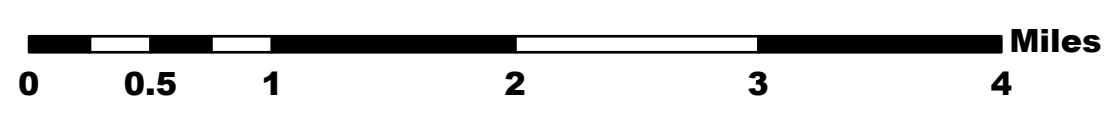
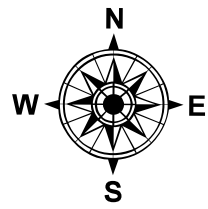


# RUM CREEK FIRE ORMED000243

# EVACUATION PLANNING 9/7/2022 22:55



**GIS ACRES: 20,029**  
**PERIMETER: IR 9/5/22 @ 20:47**  
**SCALE: 1:50,041 ON ARCH C**  
**NAD 1983 UTM ZONE 10N**



- Wildfire Perimeter
- Mileposts
- State Highways
- Roads
- Railroads
- Transmission Lines
- Division Break
- Drop Point
- Contained
- Uncontained
- MAP
- Structures
- Evacuation Zones
- Level 1: Be Ready
- Level 2: Be Set
- Level 3: Go