

123°48'W

123°36.01'W

123°24'W

Air Operations

Rum Creek

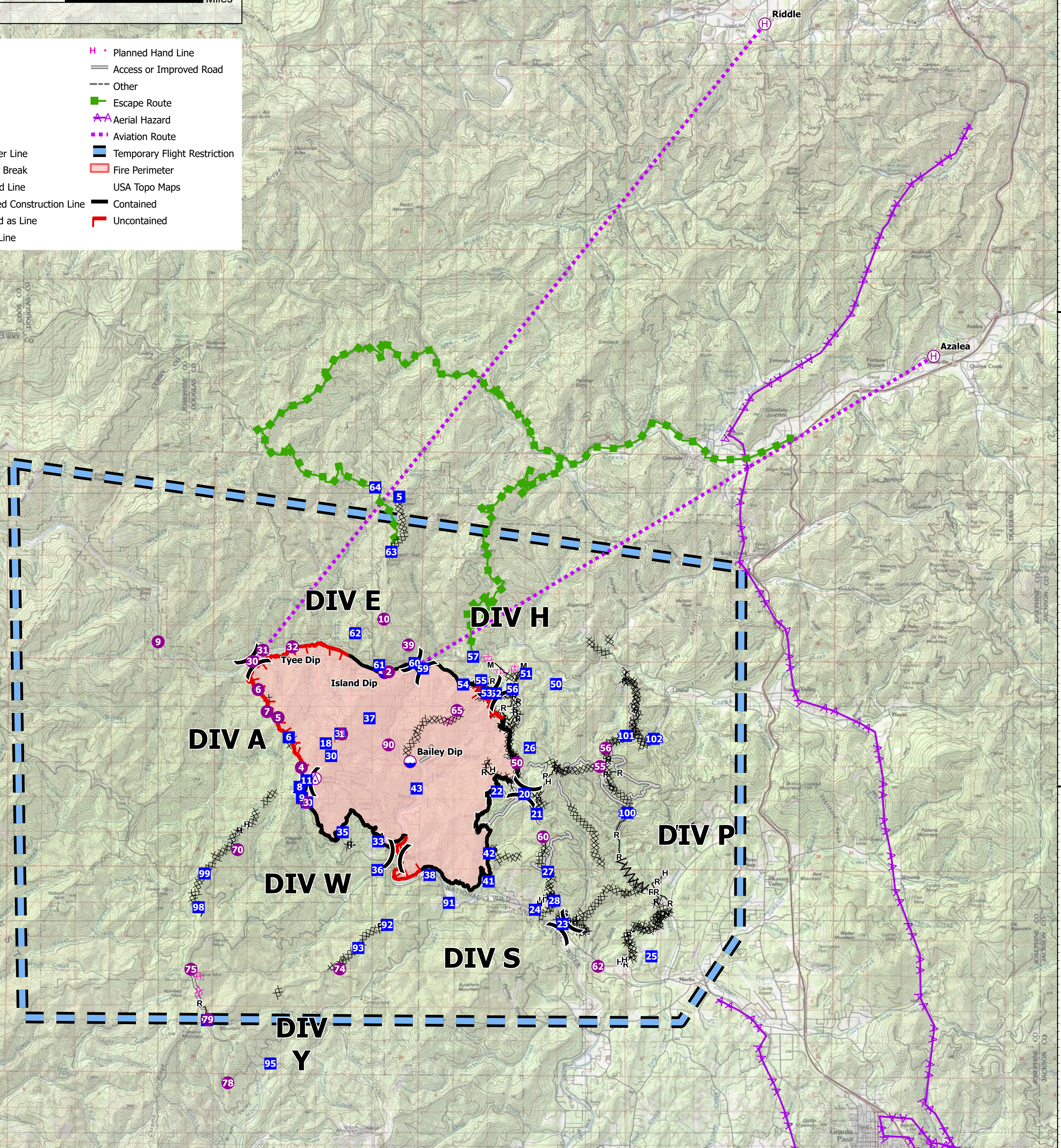
ORMED000243

09/08/2022 24hr

21227 acres at 9/7/2022 @ 2111



- ⊗ Aerial Hazard
- Dip Site
- ⊕ Helispot
- ⊙ Helibase
- X Division Break
- Drop Point
- XXX Completed Dozer Line
- ^^^ Completed Fuel Break
- H— Completed Hand Line
- M— Completed Mixed Construction Line
- R— Completed Road as Line
- X Planned Dozer Line
- H Planned Hand Line
- Access or Improved Road
- Other
- Escape Route
- Aerial Hazard
- Aviation Route
- Temporary Flight Restriction
- Fire Perimeter
- USA Topo Maps
- Contained
- Uncontained



FC Point Type Label	Latitude WGS84 DDM	Longitude WGS84 DDM
Aerial Hazard	42° 36.106' N	123° 38.563' W
Dip Site	Bailey Dip 42° 36.546' N	123° 35.319' W
Dip Site	Island Dip 42° 38.795' N	123° 36.220' W
Dip Site	Tyee Dip 42° 39.428' N	123° 39.375' W
Helibase	Azalea 42° 46.871' N	123° 17.439' W
Helibase	Riddle 42° 55.260' N	123° 23.291' W
Helispot	2 42° 38.818' N	123° 36.075' W
Helispot	62 42° 31.403' N	123° 28.846' W
Helispot	3 42° 35.500' N	123° 38.871' W
Helispot	50 42° 36.544' N	123° 31.658' W
Helispot	1 42° 37.239' N	123° 37.668' W
Helispot	90 42° 36.970' N	123° 36.058' W
Helispot	30 42° 39.057' N	123° 40.747' W
Helispot	32 42° 39.435' N	123° 39.380' W
Helispot	31 42° 39.340' N	123° 40.394' W
Helispot	5 42° 37.642' N	123° 39.850' W
Helispot	6 42° 38.345' N	123° 40.538' W

FC Point Type Label	Latitude WGS84 DDM	Longitude WGS84 DDM
Helispot	85 42° 59.840' N	123° 18.921' W
Helispot	4 42° 36.384' N	123° 39.040' W
Helispot	7 42° 37.790' N	123° 40.230' W
Helispot	9 42° 39.530' N	123° 43.980' W
Helispot	10 42° 40.150' N	123° 36.250' W
Helispot	39 42° 39.500' N	123° 35.400' W
Helispot	60 42° 34.670' N	123° 30.750' W
Helispot	65 42° 37.852' N	123° 33.723' W
Helispot	70 42° 34.292' N	123° 41.199' W
Helispot	75 42° 31.258' N	123° 42.763' W
Helispot	79 42° 29.993' N	123° 42.168' W
Helispot	78 42° 28.392' N	123° 41.471' W
Helispot	74 42° 31.295' N	123° 37.674' W
Helispot	55 42° 36.457' N	123° 28.815' W
Helispot	56 42° 36.924' N	123° 28.625' W
Sling Site	42° 32.984' N	123° 30.850' W
Sling Site	42° 36.298' N	123° 28.134' W



Unified Command
9/7/2022 2326
IR Flight
North American 1983 Datum. LatLong Grid

123°48'W

123°36.01'W

123°24'W

42°48'N

42°36'N

42°23.99'N

42°48'N

42°36'N

42°23.99'N