

123°42'W

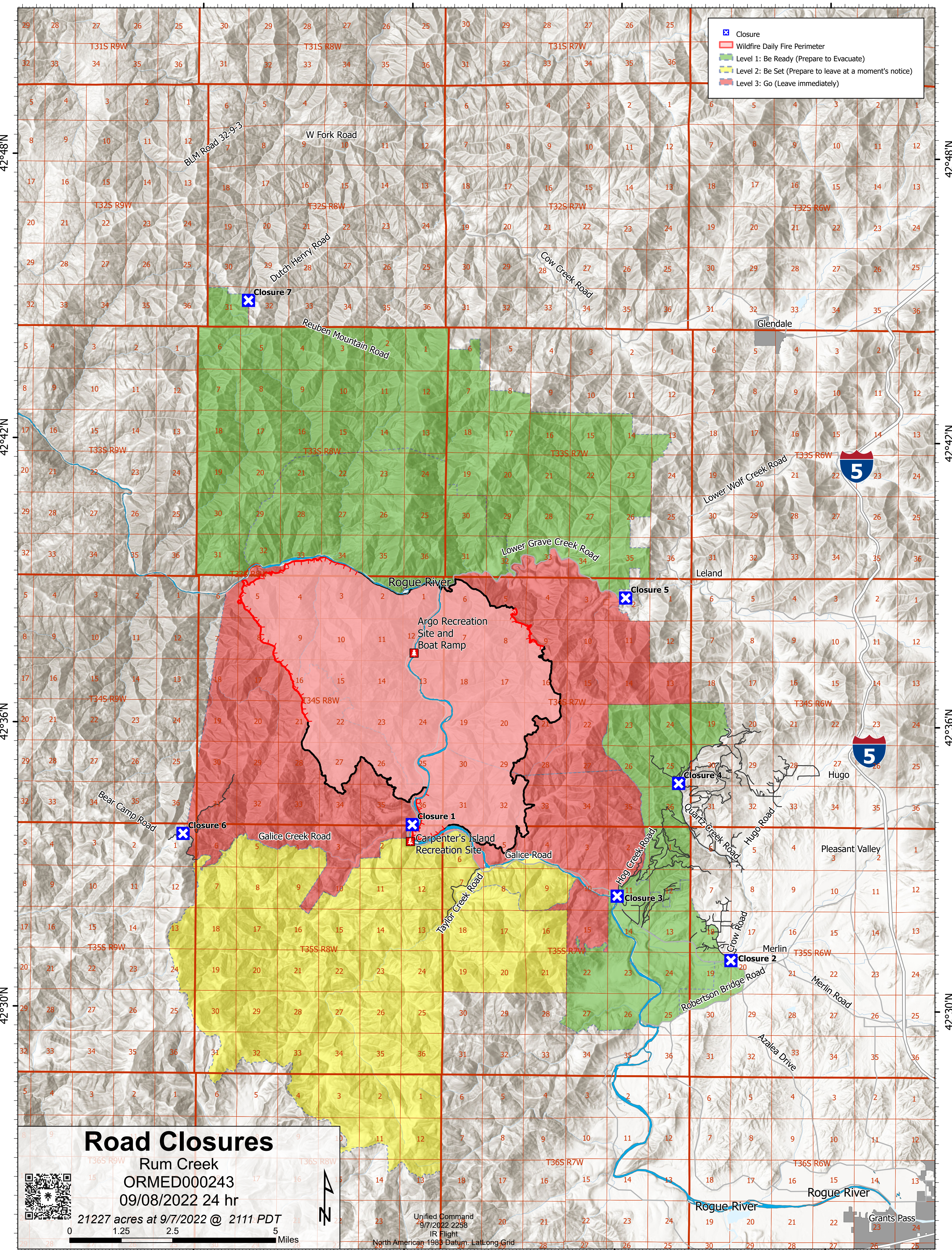
123°36.01'W

123°30'W

123°24'W

Legend

- Closure
- Wildfire Daily Fire Perimeter
- Level 1: Be Ready (Prepare to Evacuate)
- Level 2: Be Set (Prepare to leave at a moment's notice)
- Level 3: Go (Leave immediately)



Road Closures

Rum Creek
 ORMED000243
 09/08/2022 24 hr

21227 acres at 9/7/2022 @ 2111 PDT



Unified Command
 9/7/2022 2258
 IR Flight

North American 1983 Datum: Lallong Grid

123°42'W

123°36.01'W

123°30'W

123°24'W