

123°48'W

123°36.01'W

123°24'W

43°N
42°48'N
42°36'N
42°23.99'N

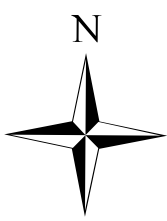
43°N
42°48'N
42°36'N
42°23.99'N



Air Operations

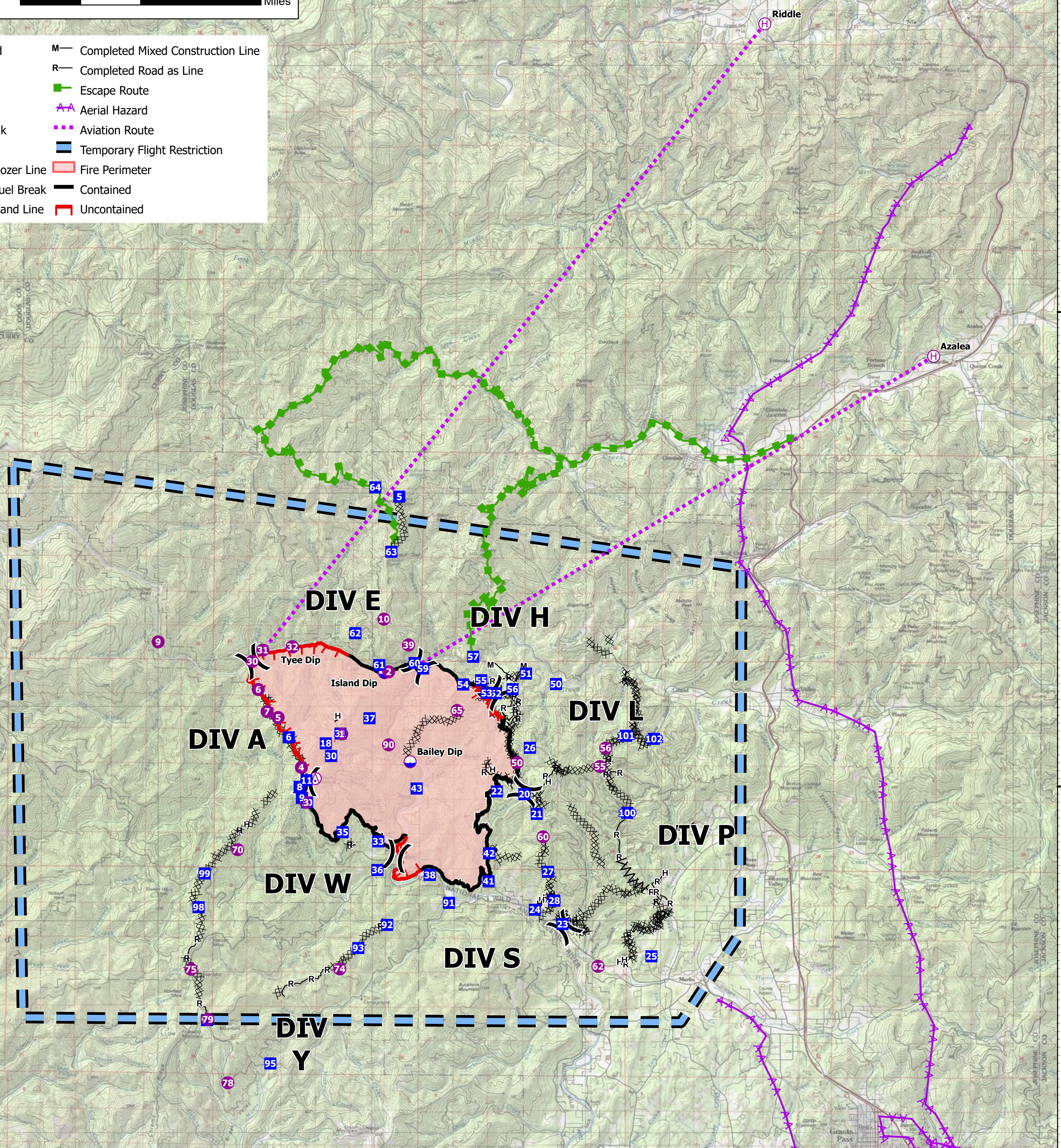
Rum Creek
ORMED000243
09/09/2022 24hr

21,347 acres at 9/8/2022 @ 2130 PDT



0 1.75 3.5 7 Miles

- Aerial Hazard
- Dip Site
- Helispot
- Helibase
- Division Break
- Drop Point
- Completed Dozer Line
- Completed Fuel Break
- Completed Hand Line
- Completed Mixed Construction Line
- Completed Road as Line
- Escape Route
- Aerial Hazard
- Aviation Route
- Temporary Flight Restriction
- Fire Perimeter
- Contained
- Uncontained



FC Point Type Label	Latitude WGS84 DDM	Longitude WGS84 DDM
Aerial Hazard	42° 36.106' N	123° 38.563' W
Dip Site Bailey Dip	42° 36.546' N	123° 35.319' W
Dip Site Island Dip	42° 38.795' N	123° 36.220' W
Dip Site Tye Dip	42° 39.428' N	123° 39.375' W
Helibase Azalea	42° 46.871' N	123° 17.439' W
Helibase Riddle	42° 55.260' N	123° 23.291' W
Helispot 1	42° 37.239' N	123° 37.668' W
Helispot 10	42° 40.150' N	123° 36.250' W
Helispot 2	42° 38.818' N	123° 36.075' W
Helispot 3	42° 35.500' N	123° 38.871' W
Helispot 30	42° 39.057' N	123° 40.747' W
Helispot 31	42° 39.340' N	123° 40.394' W
Helispot 32	42° 39.435' N	123° 39.380' W
Helispot 39	42° 39.500' N	123° 35.400' W
Helispot 4	42° 36.384' N	123° 39.040' W
Helispot 5	42° 37.642' N	123° 39.850' W
Helispot 50	42° 36.544' N	123° 31.658' W

FC Point Type Label	Latitude WGS84 DDM	Longitude WGS84 DDM
Helispot 55	42° 36.457' N	123° 28.815' W
Helispot 56	42° 36.924' N	123° 28.625' W
Helispot 6	42° 38.345' N	123° 40.538' W
Helispot 60	42° 34.670' N	123° 30.750' W
Helispot 62	42° 31.403' N	123° 28.846' W
Helispot 65	42° 37.852' N	123° 33.723' W
Helispot 7	42° 37.790' N	123° 40.230' W
Helispot 70	42° 34.292' N	123° 41.199' W
Helispot 74	42° 31.295' N	123° 37.674' W
Helispot 75	42° 31.258' N	123° 42.763' W
Helispot 78	42° 28.392' N	123° 41.471' W
Helispot 79	42° 29.993' N	123° 42.168' W
Helispot 85	42° 59.840' N	123° 18.921' W
Helispot 9	42° 39.530' N	123° 43.980' W
Helispot 90	42° 36.970' N	123° 36.058' W
Sling Site	42° 32.984' N	123° 30.850' W
Sling Site	42° 36.298' N	123° 28.134' W



KDK
9/8/2022 2251
IR Flight
North American 1983 Datum. LatLong Grid

123°48'W

123°36.01'W

123°24'W