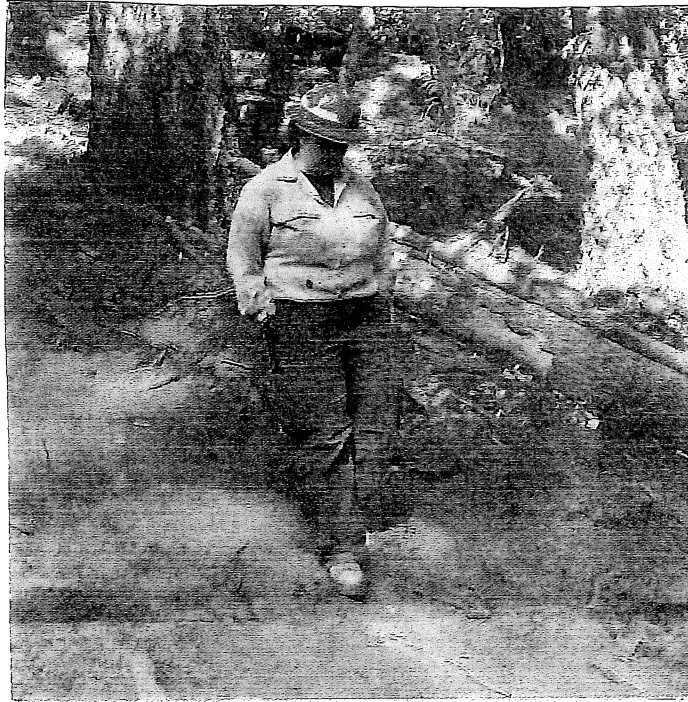


# Rum Creek Fire

OR-MED-000243

P0QA, PDP0QA(1522),221-IWQ, ODF 71234823



Photos by BEA AHBECK / Daily Courier

## Incident Action Plan

Monday

September 19, 2022

Operational Period: 0700 - 2030

Morning Briefing, Maps, IAP, Check-in, CTR, Shift Ticket, Demob



ORGANIZATION ASSIGNMENT LIST		8. Operations Section		
1. Incident Name Rum Creek Fire		Chief-Field	Don Hammack, Danny Lemer	
2. Date 9/19/2022	3. Time 0700-2030	Chief-Planning	Ron Naber, Manny Mendoza, Joe Brabender	
4. Incident Commander and Staff		a. Divisions/Groups		
Incident Commander	Jay Winfield Rich Cowger (t) Frank Guzman (t)	Division/Group	A / W	Mike Schinstock Russ Shumate
Deputy Incident Commander	Paul Roose	Division/Group	E / H	Tomas Rivero, Dan Bill
Safety Officers	Marvin Carpenter Peter Forbes	Division/Group	L / S	Mike West, Jeff Barnes Jeff Corser Ryan Heminger (t)
Information Officer	Chris Ziegler, Jill Cobb (v) Jonathan Ashford Bridget Bushue (t) Lisa Cox (t)	Division/Group	P / Y	Matt Ziegler
Liaison Officer	Chris Grove Roberto Trincado (t)	Division/Group	Cabin Road	Mike West, Jeff Barnes Jeff Corser Ryan Heminger (t)
5. Agency Administrators				
Agency	Name	Division/Group	Staging	
BLM Agency Administrator	Jared Nichol			
ODF Agency Administrator	Tyler McCarty			
ODF Dep Agency Administrator	Karl Witz			
BLM Resource Advisor	Rachel Showalter Mellissa Pingree (t)			
SW Crew IARR (851-903-4135)	Paul Gibbs			
BLM Agency Representative	Natalie Simrell			
6. Planning Section				
Chief	Will Bernard			
Deputy	Mike Rubenstein			
Resources Unit	Jody Pettit, Chris Rohrbach (t)	c. Air Operations Branch		
Check In	Roxanne Merrick (t)	Air Operations Branch Director	Chris Dargan (t)	
Demob Unit	Mark Draper	Air Support Supervisor	Randy Gilbert (t)	
Documentation Unit	Jan Fleming			
Situation Unit	Chris Evans (RIST-v)			
GIS Specialists	Jenny Connelley	9. Finance Section		
Fire Behavior Analyst	Eric Trimble	Chief	Amy Waring, Dale Harrison	
Human Resource Specialist	Julie Nelson	Time Unit	Annette Hoyer Michelle Dauenhauer (t) (v)	
Incident Technology Support	Ed Yeager	PTRC	Robin Kockler (t), Tiffany Ward (t), Mary Dykstra (v)	
7. Logistics Section		EQTR	Marissa Giampaoli, Marie McLaughlin, Cathy Keyes-Sweet, Candice Hall (t)	
Chief	Tyler Rae, Jeremy Walla, Roger Harris, Bryan Connelley (t)	Cost Unit	Nolan Baldwin (t), Eva Bailey (t)	
Logistics Chief 3	Al Wisdom			
Communications Unit	Tom Robbins, Brian Dierking			
Facilities Unit	Rebecca Jarrett (t)	Prepared by Resource Unit Leader:		
Food Unit	Ken Haberi	Chris Rohrbach, RESL (t)		
Ground Support Unit	Jason Noble			
Medical Unit	Teri Miller, Melanie Miller (t)			
Ordering Unit	Andrea Catroppa			
Supply Unit	Perry Stebbins			
Security Manager	James Maloney	t = trainee	v = virtual	9/18/2022

## Fire Behavior Forecast

<b>Fire Behavior Forecast: 30</b>	<b>Type of Fire: Wildfire</b>
<b>Fire Name: Rum Creek</b>	<b>Operational Period: Monday 9/19/22</b>
<b>Date Issued: Sunday, Sept 18, 2022</b>	<b>Time Issued: 1900</b>
<b>Unit: OR-MED</b>	<b>Signed: /s/ Eric Trimble FBAN</b>

### Fire Weather Summary:

**Day:** Mostly Cloudy with a 35% chance of rain. Max Temps: 68° to 78° F, Min RH's: 28% to 36%. Winds: Valleys: ESE 1-4 w/gusts to 12 mph. **Ridges: East 8-12 mph w/gusts to 22 mph.** CWR: <10%; **LAL: 2;** Haines: 4  
**Night:** Mostly Cloudy with a 50% chance of rain. Min Temps 52° to 46° F, Max RH's: 95% to 100%. Winds: East 2-5 mph; becoming downslope 1-3 mph overnight. CWR (0.25") <10%.

-See Fire Weather Forecast-

### Fuels:

Mixed conifer and hardwood forest dominated by mature Douglas-fir, Pacific madrone, ponderosa pine, Oregon white and black oak, sugar pine, and cedar. Moderate to high grass/shrub component. Low dead/down material.

Mature Conifer Forest: Fuel Model: **TU5** – High Load, Dry Climate Timber-Shrub; and Fuel Model **TL3** – Moderate Load, Conifer Litter. Herbaceous and live woody fuels are generally green above 2,000'. Below 2,000' and on exposed aspects herbaceous and live woody fuels are largely cured and will contribute to surface fire spread.

Mixed Broadleaf/Conifer Forest: Fuel Model: **TL2** – Low Load Broadleaf Litter interspersed with: **GR2** - Low Load Grass. Herbaceous and live woody fuels are largely cured and will contribute to surface fire spread.

**Fine Fuels: 9-11%; 10-hr: 19%; 100hr: 20%; 1,000hr: 16%**

**ERC <70<sup>th</sup> Percentile; Severe Fire Danger Index (SFDI): Moderate – trending down**

### General Fire Behavior:

Mostly creeping and smoldering fire behavior with limited surface fire activity.

### Specific Fire Behavior:

#### All Divisions:

Isolated heat. Expect minimal surface fire activity.

#### Initial Attack:

For new starts expect max ROS of 200 to 300 feet/hour within the mature conifer stands (**TU5/TL3**); 100 to 150 feet/hour flanking and <30 feet/hour backing fire – [based on predicted RH, temps, wind and no rain].

Potential Fire behavior within the Low Load Grass (**GR2**): Max ROS: ~¼ mile /hour w/no rain.

Low Load Broadleaf Litter (**TL2**): Max ROS: <60 feet/hour – [based on predicted RH, temp, wind and no rain].

**Probability of Ignition (PIG): 20-30%.**

**Air Operations:** VFR below cloud base (8,000' AGL).

**Safety:** Risks to fire-line personnel increase significantly during transfer of command, regardless of size or complexity of the incident. Mitigate the risks by proper implementation of LCES

<b>DIVISION ASSIGNMENT LIST</b>				1. Zone		2. Division <b>A / W (2 of 2)</b>	
3. Incident Name <b>Rum Creek</b>				4. Operational Period Date: <b>9/19/2022</b> Time: <b>0700-2030</b>			
5. Operations Personnel							
Operations Chiefs - Field		Don Hammack, Danny Lemer					
Operations Chiefs - Planning		Ron Naber, Manny Mendoza, Joe Brabender					
Safety Officer		Marvin Carpenter, Peter Forbes		Division Supervisor		Russ Shumate (LWD 9/23)	
6. Resources Assigned this Period							
Strike Team/Task Force/Resource Designator		Leader		Number Persons	LWD	Air Travel	Drop Off PT./Time
O-430 REAF		Joe Porter		1	9/19		
O-365 REAF (t)		Jon Blalock		1	9/28		
O-431 REAF (t)		Victoria Hough		1	9/28		
O-231 EMPF		Michael McDonnell		1	9/19		
O-6 EMTF		Emily Fox		1	9/20		
E-29 REMS #1 Valley Fire Service		Ben Nehf		4	9/23		
E-1 AMB1 Clark F&R		J. Haldeman		2	9/23		
O-323.5 SOF2		Stephen Wyatt		1	9/19		
O-323.7 SOF2		Adam Rogers		1	9/20		
7. Control Operations:							
<b>Task:</b> Patrol and mop up to incident mop up standards. Mitigate hazard trees in campground and recreation sites.							
<b>Purpose:</b> Reduce the risk of fire escaping containment lines and threatening life and property.							
<b>End State:</b> Identified values at risk are no longer threatened by the fire.							
8. Special Instructions:							
Monitor public traffic to reduce possible accidents.							
All garbage is to be backhauled to the ICP.							
All resources will be off the fireline at 1600 today.							
9. Division/Group Communication Summary							
<b>See Communications Plan</b>							
Prepared by (Resource Unit Ldr-T) <i>Chris Rohrbach</i>				Approved by (Planning Sect. Ch.) <i>Will Bernard</i>		Date <b>9/18/2022</b>	Time <b>2000</b>

DIVISION ASSIGNMENT LIST			1. Zone		2. Division <b>L / S</b>		
3. Incident Name <b>Rum Creek</b>			4. Operational Period Date: <b>9/19/2022</b> Time: <b>0700-2030</b>				
5. Operations Personnel							
Operations Chiefs - Field Operations Chiefs – Planning		<b>Don Hammack, Danny Lemer Ron Naber, Manny Mendoza, Joe Brabender</b>					
Safety Officer		<b>Marvin Carpenter, Peter Forbes</b>		Division Supervisor		<b>Jeff Barnes, Mike West, Jeff Corser, Ryan Heminger (t) (LWD 9/19)</b>	
6. Resources Assigned this Period							
Strike Team/Task Force/Resource Designator		Leader	Number Persons	LWD	Air Travel	Drop Off PT./Time	Pick Up PT./Time
O-356 TFLD		<b>Evan Karp</b>	<b>1</b>	<b>9/19</b>			
O-470 HEQB (t)		<b>Patrick Romporti</b>	<b>1</b>	<b>9/28</b>			
E-118 ENG6 H.B. Forestry		<b>Justin Hartman</b>	<b>3</b>	<b>9/25</b>			
E-9053 ENG6 Livingston General		<b>Michael Livingston</b>	<b>2</b>	<b>9/27</b>			
E-52 WTS2 Fresh Water		<b>Cole Broadberg</b>	<b>1</b>	<b>9/21</b>			
E-310 GRDR2 GE & Construction		<b>Kyle Beairsto</b>	<b>1</b>	<b>9/30</b>			
O-482 REAF		<b>Tom McNamara</b>	<b>1</b>	<b>9/27</b>			
O-231 EMPF Frontline EMS		<b>Michael McDonnell</b>	<b>1</b>	<b>9/19</b>			
O-249 EMPF Fireline Medics		<b>Janice Pritchard</b>	<b>1</b>	<b>9/19</b>			
O-254 EMTF Fireline Medics		<b>Chris Hardesty</b>	<b>1</b>	<b>9/19</b>			
O-457 SOF2		<b>Kurt Kause</b>	<b>1</b>	<b>9/19</b>			
7. Control Operations: <b>Task:</b> Continue mop up where appropriate commensurate with values at risk. Patrol and monitor completed line. Rehab fireline where specified. <b>Purpose:</b> Prevent loss or damage to private property and structures. Identify and suppress slopovers and spots across containment lines. Mitigate suppression impacts. <b>End State:</b> Defensible space has been maintained around structures. Fire has been patrolled for threatening fires and smokes. Fireline has been rehabilitated to agency standards.							
8. Special Instructions: Monitor public traffic to reduce possible accidents. All garbage is to be backhauled to ICP. All Resources will be off the fireline at 1600 today.							
9. Division/Group Communication Summary <b>See Communications Plan</b>							
Prepared by (Resource Unit Ldr-T) <i>Chris Rohrbach</i>		Approved by (Planning Sect. Ch.) <i>Will Bernard</i>		Date <b>9/18/2022</b>		Time <b>2000</b>	

**AIR OPERATIONS SUMMARY 220**

Prepared By: Randy Gilbert

Prepared: 09/18/2022

Prepared Time: 1700 hrs.

**1. INCIDENT NAME:** Rum Creek Fire

**2. OPERATIONAL PERIOD**  
09/19/2022

**START TIME:**  
0800

**END TIME:**  
2200

**SUNRISE:**  
0655

**SUNSET:**  
1919

**3. RISK ASSESSMENT MITIGATIONS, SPECIAL INSTRUCTIONS, and REMARKS:**

- TFR has been released.
- Assess mission complexity and the benefit/risk of the mission.
- Ensure visibility and winds are adequate to safely conduct flight operations.
- If you see an UAS that may not be assigned to the incident on your division report it up the chain of command to Air Operations.
- N126BH litter capable for medevac as needed.

\*\*Visibility Limitations 1mile at Helibase and destination\*\*

**4. READY ALERT AIRCRAFT**

*Order through Communications*  
See Medical Plan in the IAP  
VMED 29 RX/TX 155.3475  
RX/TX TN 156.7

Contact OR-RVC dispatch to order a Medivac. Confirm frequencies before launch. Aircraft cannot program radios in-flight.

National Guard Hoist Helicopter in Medford, available 24 hours. Call Sign 382, order through ICP.

**5. Briefing, IAP, Maps**



6. PERSONNEL	NAME	PHONE #	7. FREQUENCIES	AM	FM	8. FIXED-WING A#/ N#/ Make-Model/Base
AOBD	Chris Dangan	406-459-3881	Local Flight Follow		166.7875 RX/TX Tn 67.0	AIRTANKERS: Order via ORRVC
ASGS-t	Randy Gilbert	406-925-3779	AG Primary		167.1500	ATGS Platform: Order via ORRVC
			AG Secondary		168.0375	
No. Colorado Heliback	Preston Burns	970-318-6500				
Go direct with Rogue Valley Dispatch for mission requests.						
R6 Aviation Specialist	Gary Atteberry	541-613-6012				
Aircraft Desk - ORRVC: 541-618-2505						
DFPA Douglas Dispatch 541-672-6507						

**DIPSITES:**  
Tye Dip - 42° 39.345 N, 123° 39.802 W  
Bailey Dip - 42° 36.545 N, 123° 35.318 W  
Island Dip 42° 38.82 N, 123° 36.07 W

**9. HELICOPTERS (Use Additional Sheets as Necessary)**

FAA N#	TY	MAKE/ MODEL	BASE	START	AVAIL	REMARKS	FAA N#	TY	MAKE/ MODEL	BASE	START	AVAIL	REMARKS
126BH	3	AS350B3	Grants Pass Airport (3S8)	0800	0830	A-23							

**AIR OPERATIONS SUMMARY 220**

**10. Helispot/Helibase Summary**

Helispot Name and Location	Elevation	Type	Comments
----------------------------	-----------	------	----------

INCIDENT RADIO COMMUNICATIONS PLAN		Incident Name		Date/Time Prepared		Operational Period Date/Time			
		Rum Creek Fire		9/17/2022 1300		9/19/2022 0700 – 09/20/2022 0700			
Ch #	Function	Channel Name	Assignment	RX Freq N or W	RX Tone	TX Freq N or W	Tx Tone	Mod	Remarks
1	Tactical	TAC 1	Cabin RD GP	168.0500 N	156.7	168.0500 N	156.7	A	NIFC Tac
2	Tactical	TAC 2	DIV E/H	168.2000 N	156.7	168.2000 N	156.7	A	NIFC Tac
3	Tactical	TAC 3	DIV L/S	168.6000 N	156.7	168.6000 N	156.7	A	NIFC Tac
4	Tactical	TAC 4	DIV A/W	166.7250 N	156.7	166.7250 N	156.7	A	NIFC Tac
5	Tactical	TAC 5	DIV P/Y	168.2500 N	156.7	168.2500 N	156.7	A	NIFC Tac
6									
7	Repeater	Command 1	All Resources	172.4500 N	162.2	166.3500 N	114.8	A	BLM 9 Mile
8	Repeater	Command 2	All Resources	172.4500 N		166.3500 N	107.2	A	ROGUE DISPATCH BLM Onion
9									
10	Tactical	RED NET	Unassigned	151.3400 N	156.7	151.3400 N	156.7	A	ODF Initial Attack
11	Tactical	WHITE NET	Unassigned	151.3100 N	156.7	151.3100 N	156.7	A	ODF Air to Air Initial Attack
12									
13									
14									
15	Air/Ground	VMED 29	EMERGENCY	155.3475 N	156.7	155.3475 N	156.7	A	MEDEVAC
16	Air Guard	Air Guard	All Resources	168.6250 N		168.6250 N	110.9	A	Emergency
Prepared By (Communications Unit)				Incident Location		Merlin, OR			
Thomas Robbins, COM1									

The convention calls for frequency lists to show four digits after the decimal place, followed by either an "N" or a "W", depending on whether the frequency is narrow or wide band. Mode refers to either "A" or "D" indicating analog or digital (e.g. Project 25) or "M" indicating mixed mode. All channels are shown as if programmed in a control station, mobile or portable radio. Repeater and base stations must be programmed with the Rx and Tx reversed.

# MEDICAL PLAN (ICS 206 WF)

Controlled Unclassified Information//Basic

Incident/Project Name		2. Operational Period											
<b>Rum Creek</b>		<b>09/19/2022</b>											
Ambulance Services													
Name		Complete Address		Phone & EMS Frequency		Advanced Life Support (ALS) Yes No							
AMR Ambulance		401 NW F St. Grants Pass, OR 97526		911		Yes							
Air Ambulance Services													
Name		Phone		Type of Aircraft & Capability									
Mercy Flights		541-858-2600		(ALS) Fixed and Rotor		40 min Flight Time to Fire							
Hospitals													
Name Complete Address		GPS Datum – WGS 84 Coordinate Standard Degrees Decimal Minutes DD° MM.MMM' N - Lat DD° MM.MMM' W - Long		Travel Time Air Gnd		Phone		Helipad Yes No		Level of Care Facility			
Asante Three Rivers Medical Center 500 SW Ramsey Ave Grants Pass, OR 97527		Lat: 45° 25.31 N		35 Min		1 Hr		1-541-659-7287 Supervisor		X		Level 3 Trauma	
		Long: 123° 20.64 W											
		VHF: TX/RX 155.3400 FAA OR19											
Rogue Valley Regional 2825 Barnett Rd. Medford, OR 97504		Lat: 42° 19.08 N		40 Min		1.5 Hrs		1-541-789-7132 Charge Nurse		X		Level 2 Trauma	
		Long: 122° 49.91 W											
		VHF: TX/RX 155.3400 FAA OR99											
Legacy Emanuel Hospital 2801 N. Gantenbein Ave Portland, OR		Lat: 45° 32.668 N		1 Hr		5 Hrs		1-503 -413-1163 Charge Nurse		X		Level 1 Trauma / Burn Center	
		Long: 122° 40.293 W											
		VHF: TX/RX 155.3400 FAA 70RS											
Air to Ground VMED TRX 155.3475 RX 155.3475		Lat:											
		Long:											
		VHF: Tone 156.71											
Division   Branch   Group			Area Location Capability										
<h2 style="margin: 0;">West Zone</h2>			EMS Responders & Capability:			REMS 1 (Rural Metro) ALS Ambulance ambo 1 ALS Paramedic (McMcdonnel), EMT(E. Fox)BLS							
			Equipment Available on Scene:			REMS Module							
			Medical Emergency Channel:			Rum Creek Communications							
			ETA for Ambulance to Scene:										
			Air:			40 Min							
			Ground:			1 Hr							
			Approved Helispot:										
			Lat:										
Long:													



## COVID-19 Protocols

CDC currently puts the community spread risk of Josephine County at Medium.

Community spread risk of medium guidelines state: “People may choose to mask at any time. People with symptoms, a positive test, or exposure to someone with COVID-19 should wear a mask.”

### Team Protocols:

Social distance 6’ indoors and outdoors.

Hand wash frequently

Mask up when gathering indoors, (surgical mask is okay unless immune compromised) and try to gather outdoors.

Utilize technology vs face to face for communications when possible. Example texting, cell phone calls or face time.

Do not enter yurts. Knock or call number on door

We now have a dedicated onsite testing tent available to us all. They perform both the rapid antigen tests and PCR tests. PCR test results back in 20 minutes. Go to the medical unit or call Teri Miller 406-544-3070 if you wish to arrange for individual or group testing. Generally, they will be available 0600-2100

The team appreciates everyone’s commitment to Safety First.

## Incident within Incident (IWI) Plan

### Immediate response:

- Secure the site to prevent further injury to victims and responders.
- Render first aid using crew and line EMT's and nearby forces.
- Designate a Point of Contact at the scene. Notify communications who this is and when it changes.
- Notify Communications and Medical Unit. Identify whether this is a life threatening emergency or less serious injury.
- Communications requests "Emergency Traffic" to clear channel if it is a life threatening emergency.
- Transmit critical information from the scene to Communications: Type and extent of injury; Airway or breathing problems; serious bleeding; EMT present or needed; ALS needed. Give specific location of victim: Lat/Long; ground or air access; DP#; Helispot or helicopter medevac site. Do not use victim or crew names in any communications. Use the Medical Incident Report, pages 118 and 119 of the Incident Response Pocket Guide (IRPG) as a checklist.
- Request appropriate Medical Unit, incident resource and local 9-1-1 EMS response.
- Designate an Incident Within Incident Commander (IWIC). DIVS is normally in charge. Other Operations persons may be in charge until relieved. Notify communications who this is and when it changes.
- Communications: If requested, notify Local 9-1-1 EMS and other responders right away. Provide staging information, medical evacuation location(s), IWIC, medical contact information and communication protocol. Post Medical Incident Report at Communications desk to facilitate sharing critical information.
- Medical Unit Leader should assist the IWIC in coordinating any Local EMS, incident medical, and transportation response.
- Communications notifies DIVS, Line OPS and SOF2 to respond to the scene.
- In the event we are shadowing another team, provide whatever assistance we can to help them with the situation.

### Aviation Mishap:

For an aviation accident within the fire area, the standard Incident within Incident protocols will be followed.

For an aviation accident outside of the fire area, the following procedure will be followed in addition to the Incident within an Incident Protocols.:

If an aviation accident is suspected or reported, Helibase will dispatch Air Attack to the location to assess the scene. If no Air Attack is available than the closest aviation resource will be dispatched. Helibase will then make a determination on the most appropriate helicopter available to respond for rescue considering time, capabilities, access, etc. Once on scene the helitack on site will designate a POC to be in charge of the situation until relieved. Once these resources are on scene and communication is established the Incident within an Incident protocols remain the same.

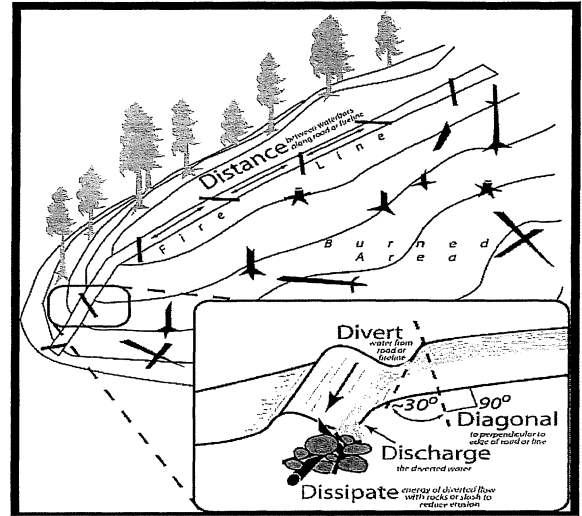
# Top 10 Natural Resources Take-homes from Rum/Hog Creek Fire

These are the top 10 messaging points and/or tidbits of 'gee-whiz' info that we have shared that will prove useful no matter what incident you work on (excluding the Port Orford Cedar topic). Thank you for your most excellent work here and safe travels as you time out and return to your home units! Note: these are not listed in order of importance.

- 1) Constructing EFFECTIVE waterbars on firelines includes attention following the 5-D's; Distance, Divert, Diagonal, Discharge, and Dissipate. The purpose of waterbars is to slow water down as it travels downhill. When constructed correctly, waterbars help reduce excessive erosion and mitigate sediment transfer to streams and rivers.

Fireline Slope	Maximum Spacing
1-6%	300 ft.
7-9%	200 ft.
10-14%	150 ft.
15-20%	90 ft.
21-40%	50 ft.
41-60+%	25 ft.

Figure 1. The Five-D System for Effective Fireline Waterbars. Furniss (undated) PNW



- 2) WE ARE WITHIN THE RANGE OF PORT-ORFORD CEDAR AND ROOT-ROT, WHICH IS WHY WE BLEACH OUR WATER.
- 3) Control efforts and economic losses stemming from noxious weeds are extremely costly – upwards of \$125 million, in Oregon alone. The best thing we can do is to prevent the spread; use the weed wash whenever possible, check your clothing for seeds, and ensure no plant parts/seeds make the journey home with you.
- 4) In areas where there are cultural sites, please do not move the items from where you discovered them. Simply collect point location, and pass the data to a READ/F on your division.
- 5) As pumps are set up for mop-up, please keep fuel as far from the streams as possible, and make sure each pump has a containment kit. Set pumps, fuel, jerry cans, etc. on level ground and ensure absorbent pads are changed when they become 50% saturated.
- 6) Avoid drafting from smaller streams – if you need to dam up a source, ensure at least 50% of the outflow remains, and pull the fine gravel (which salmonids use for spawning) to the side so that it can be easily re-integrated into the pool.
- 7) Splash erosion occurs when raindrops (which can travel at up to 20 mph) strike soil without any plant cover or woody debris to intercept the drop's kinetic energy; soil particles can splash up to five feet horizontally and two feet in the air. Sorta like a kid doing a cannonball into the pool....but on a miniature scale.
- 8) You'd be surprised how long trash persists; a Ziplock bag takes ~ 1,000 years to decompose!
- 9) Noxious weed seeds can remain viable for 1 – 80 years, depending on species.

- 10) The Chinook is the biggest of all of the Pacific salmon species, growing as long as 53 inches and weighing as much as 126 pounds. Females lay up to 14,000 eggs at a time.

**LITTER LASTS THIS LONG**

CIGARETTE BUTTS..... 1-5 YEARS  
 ALUMINUM CANS..... 80-100 YEARS  
 ORANGE PEELS..... UP TO 2 YEARS  
 PLASTIC BAGS..... 10-20 YEARS  
 GLASS BOTTLES..... 1 MILLION YEARS  
 TIN CANS..... 50 YEARS  
 WOOL SOCKS..... 1-5 YEARS  
 PLASTIC BOTTLES..... INDEFINITELY

**IF YOU PACK IT IN... PACK IT OUT**

Final fun fact; one-half inch of rain over the 22K acres that the Rum/Hog Creek fire encompasses equates to roughly **287,600,000 gallons of water over the area PER event.**

09/19/2022

TENTATIVE RELEASE

RUM CREEK US-OR-MED-000243

**CREWS**

C-46	0000	(CRW2)	CRW2 - T2C328 DUST BUSTERS CREW-
------	------	--------	----------------------------------

**EQUIPMENT**

E-165	0000	(MBM2)	PARTRIDGE, WARREN -
E-9038	0000	(DZR2)	ODF IRA BRIERVILLE FIRE & FORESTRY
E-9046	0000	(WTS2)	ODF IRA BRIERVILLE FIRE & FORESTRY
E-9056	0000	(ENG6)	ODF IRA BRIERVILLE FIRE & FORESTRY
E-9090	0000	(EXC2)	EXC2 - ODF IRA PARKER EXCAVATION
E-9092	0000	(LOW2)	LOW2 - ODF IRA PARKER EXCAVATION
E-255	0800	(WTS2)	WTS2 - ANGEL WINGS H20 LLC -
E-23	1000	(WEED)	XTREME WILDLAND, INC - 71
E-55	1200	(CLSU)	ABLAZE COMMUNICATIONS - CLSU -

**OVERHEAD**

O-323.10	0000	(PIO2)	COBB, JILL
O-323.41	0000	(GISS)	CONNELLEY, JENNY E
O-323.69	0000	(PTRC)	DYKSTRA, MARY K
O-323.68	0000	(EQTR)	GIAMPAOLI, MARISSA
O-323.16	0000	(LOFR)	GROVE, CHRIS L
O-323.75	0000	(ICT2)	GUZMAN, FRANK V
O-323.50	0000	(LSC2)	HARRIS, JOHN ROGER
O-252	0000	(SEC1)	JOHNSON, CHRISTOPHER A
O-323.20	0000	(OSC2)	MENDOZA, MANUEL E
O-323.22	0000	(OSC2)	NABER, RONALD HARRY
O-321	0000	(DIVS)	SCHINSTOCK, MICHAEL
O-338	0000	(EMTF)	STEVE BEASLEY, FRONT LINE EMS LLC

09/18/2022

19:19:21

Revision Date: 12/19/2011

09/20/2022

TENTATIVE RELEASE

RUM CREEK US-OR-MED-000243

O-356	0000	(TFLD)	KARP, EVAN ELLIOT
O-323.28	0000	(DIVS)	KNUDSON, AARON MICHAEL
O-323.73	0000	(PTRC)	KOCKLER, ROBIN
O-323.21	0000	(OSC2)	LEMER, DANIAL E
O-231	0000	(EMPF)	MCDONNELL, MICHAEL
O-323.47	0000	(SCKN)	MERRICK, ROXANNE
O-407	0000	(HRSP)	NELSON, JULIE FRANCES
O-323.57	0000	(GSUL)	NOBLE, JASON BRIAN
O-323.2	0000	(ICT2)	ROOSE, PAUL LEON
O-323.54	0000	(SPUL)	STEBBINS, PERRY
O-330	0000	(READ)	STODDARD, JUSTIN
O-323.32	0000	(DIVS)	TRINCADO, ROBERTO
O-323.51	0000	(LSC2)	WALLA, JEREMY THOMAS
O-381	0000	(PTRC)	WARD, LISA TIFFANY
O-323.30	0000	(DIVS)	WEST, MICHAEL B
O-323.1	0000	(ICCI)	WINFIELD, JAY T
O-323.5	0000	(SOF2)	WYATT, STEPHEN
O-323.12	0000	(PIO2)	ZIEGLER, CHRISTOPHER T
O-411	0600	(FACL)	JARRETT, REBECCA N
O-323.49	0600	(LSC2)	RAE, HENRY TYLER
O-323.55	0700	(COML)	ROBBINS, THOMAS M
O-343	0900	(EQTR)	KEYSE-SWEET, CATHERINE ANNUTKA
O-395	1030	(ORDM)	CATROPPIA, ANDREA L

**Please email ALL CTRs, Shift Tickets and agreements to:  
2022.rumcreek.finance@firenet.gov .**

**NR Team 6 is demobing resources virtually. Please see Finance to make arrangements for remote demob:**

**ODF Personnel and Contracts under ODF IRAs**

- Please send final shift ticket to rumcreek.odffinance@gmail.com to start the remote demob process.

•  
\*\*When submitting your last CTR/Shift Ticket Please put a contact phone number and Email address on the document before you send it to finance\*\*

**THE FOLLOWING RESOURCES PLEASE CONTACT FINANCE**

RO#	NAME
C-13	CO92 Dust Busters Plus LLC
O-231	P4 McDonnell front line
O-249	Janice Pritchard
O-313	Buda, Jason
O-332	Fireline Medic
O-9064	Huels, Mary
E-11	Krouse, Michael
E-200	Wilderness Medics
E-208	Thunder Fire sup.
E-260	Kirkland, Kerry D
E-29	Valley fire Service
E-9055	ENG6-ODF IRA LA Fire
E-9076	Rodgers Contract

**Rum Creek** – OR-MED-000243 (Fire codes: DOI=PoQA, FS=PDPoQA 1522, WADNR=221-IWQ, ODF=71234823 MT=902475)

**Personnel exchanges** (crew swaps), contact Check-in (406) 291-8982

# FIRE INFORMATION

## Fire Information Contacts and Sources:

- Public Information Phone Line for the Rum Creek Fire:
  - 541-625-0849 hours 10:00 am-5:00 pm

Please send photos to: [2022.rumcreek@firenet.gov](mailto:2022.rumcreek@firenet.gov)

- Facebook: [facebook.com/RumCreekFire2022](https://facebook.com/RumCreekFire2022)
- Inciweb: [inciweb.nwcg.gov/incident/8348](https://inciweb.nwcg.gov/incident/8348)

*Please remember your PPE when taking photos.*

## Rum Creek Fire



FIRE INFORMATION (INCIWEB)



FIRE MAPS



CLOSURE INFORMATION



SOCIAL MEDIA

### How to use QR codes:

1. Open Camera app on your phone
2. Hover over the image
3. Click on link/wait for the website to pop



**ACTIVITY LOG (ICS 214)**

<b>1. Incident Name:</b>	<b>2. Operational Period:</b> Date From: _____ Time From: _____	<b>Date To:</b> _____ <b>Time To:</b> _____
<b>3. Name:</b>	<b>4. ICS Position:</b>	<b>5. Home Agency (and Unit):</b>
<b>6. Resources Assigned:</b>		
Name	ICS Position	Home Agency (and Unit)
<b>7. Activity Log:</b>		
Date/Time	Notable Activities	
<b>8. Prepared by: Name:</b> _____ <b>Position/Title:</b> _____ <b>Signature:</b> _____		
ICS 214, Page 1		
		<b>Date/Time:</b> _____