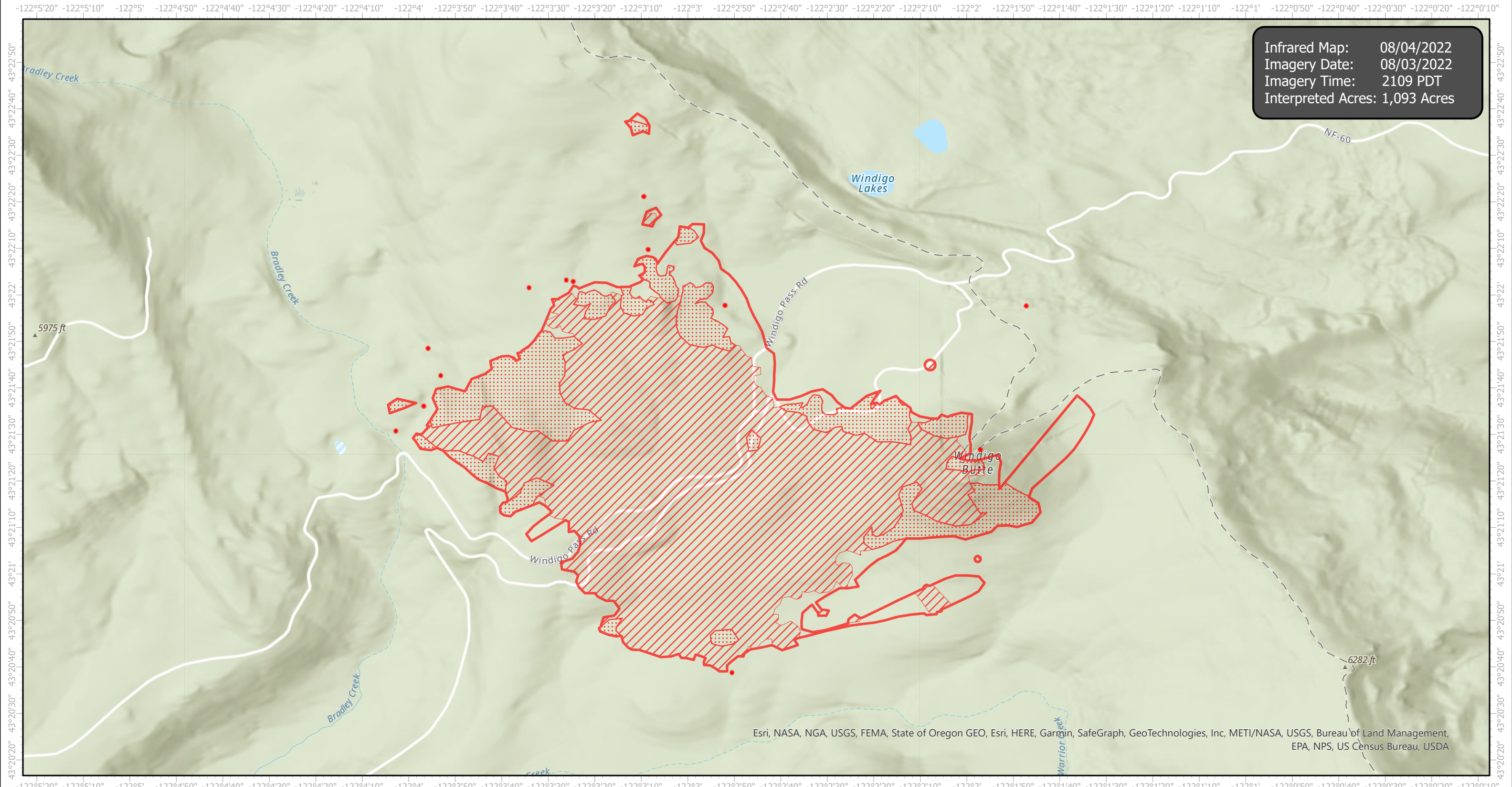


Windigo Infrared Map

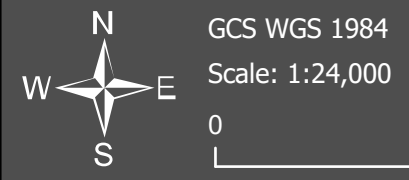
Incident # (OR-UPF-000234)



Infrared Map: 08/04/2022
Imagery Date: 08/03/2022
Imagery Time: 2109 PDT
Interpreted Acres: 1,093 Acres



Esri, NASA, NGA, USGS, FEMA, State of Oregon GEO, Esri, HERE, Garmin, SafeGraph, GeoTechnologies, Inc, METI/NASA, USGS, Bureau of Land Management, EPA, NPS, US Census Bureau, USDA



- IR Isolated Heat Source
- ▭ IR Intense Heat
- ▭ IR Heat Perimeter
- ▭ IR Scattered Heat

Infrared Interrupter: Daniel LeVrier
email: daniel.levrier@usda.gov