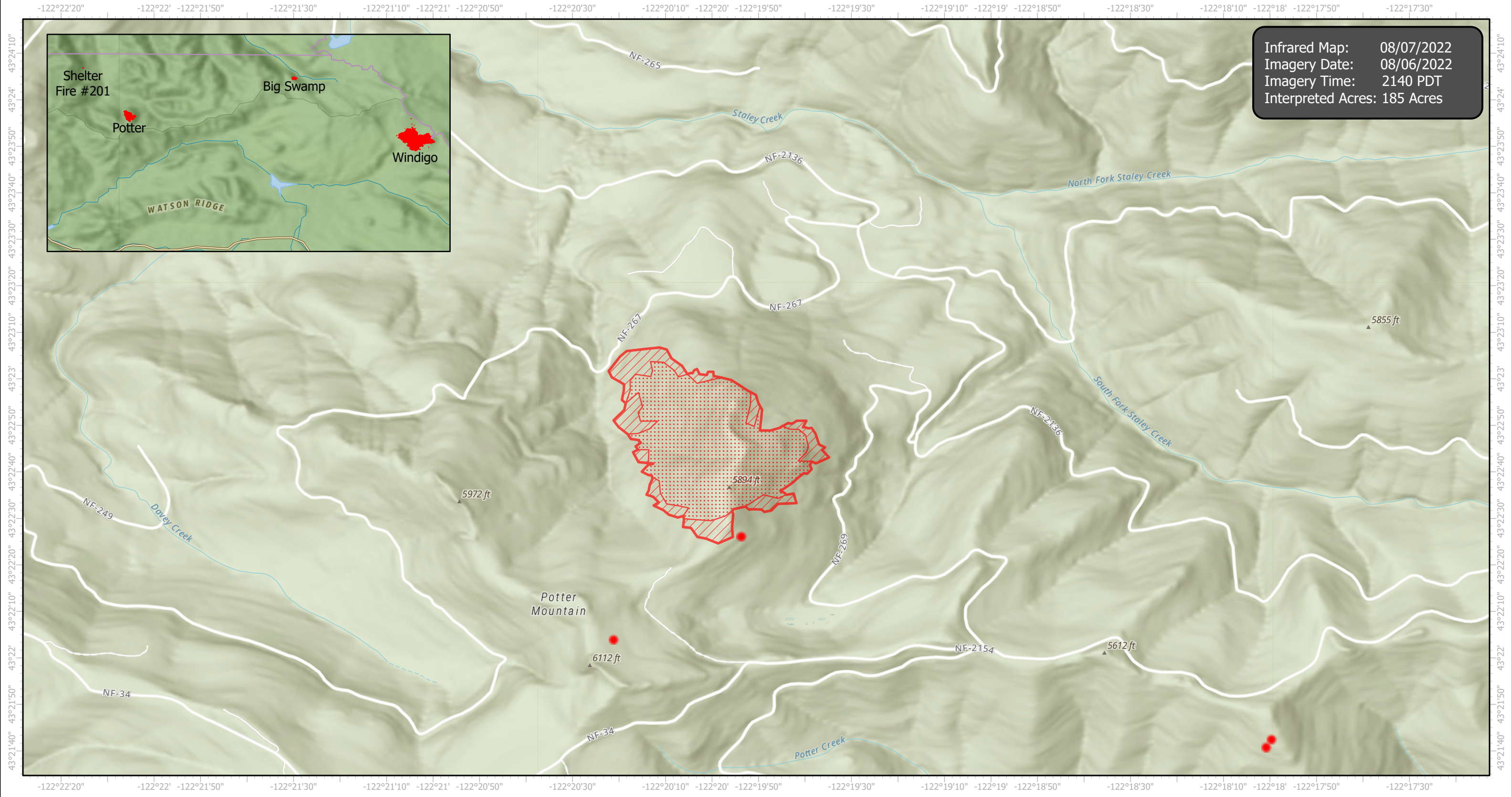


Potter Infrared Map

Incident # (OR-WIF-220170)



Infrared Map: 08/07/2022
Imagery Date: 08/06/2022
Imagery Time: 2140 PDT
Interpreted Acres: 185 Acres



- IR Isolated Heat Source
- ▨ IR Intense Heat
- ▤ IR Heat Perimeter
- ▧ IR Scattered Heat

Infrared Interrupter: Daniel LeVrier
email: daniel.levrier@usda.gov