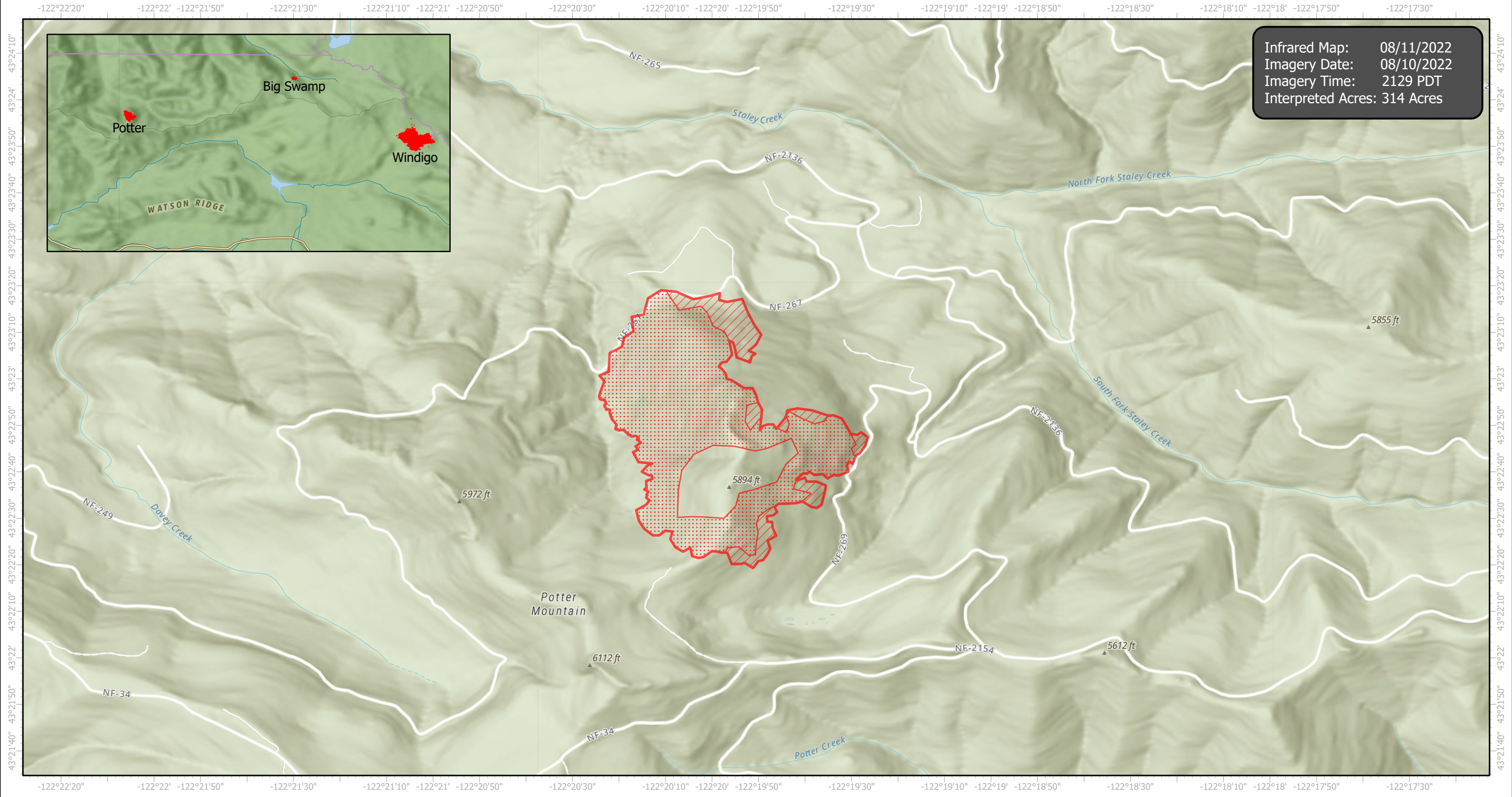


# Potter Infrared Map

Incident # (OR-WIF-220170)



Infrared Map: 08/11/2022  
Imagery Date: 08/10/2022  
Imagery Time: 2129 PDT  
Interpreted Acres: 314 Acres



N  
W E  
S

GCS WGS 1984  
Scale: 1:24,000

0 1 2 Miles

- IR Heat Perimeter
- IR Intense Heat
- IR Scattered Heat

Infrared Interrupter: Daniel LeVrier  
email: [daniel.levrier@usda.gov](mailto:daniel.levrier@usda.gov)