

INCIDENT ACTION PLAN

BOLT CREEK

WA-NWS-150
PN P14322 (1522)



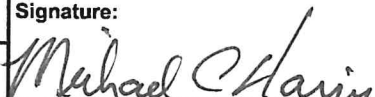
Friday

OPERATIONAL PERIOD

10/7/2022 0700
to
10/8/2022 0700



ORGANIZATION ASSIGNMENT LIST (ICS 203)

1. Incident Name:		2. Operational Period: DAY/NIGHT SHIFT	
BOLT CREEK		Date/Time From: 10/07/2022 0700	Date/Time To: 10/08/2022 0659
		FRI	SAT
3. Incident Commander(s) and Command Staff:		7. Operations Section:	
IC/UC	LEONARD JOHNSON MICHAEL HARRIS (T)	OPS SECTION CHIEF	RYAN NICHOLLS 509-430-1606
INFORMATION OFFICER	CHUCK TURLEY AMANDA MONTHEI (VIRTUAL)	PLANNING OPS	DAN STUCKI 801-860-7865
LIAISON OFFICER	TIM MCKERN (VIRTUAL) DAN SMITH (T) (VIRTUAL)	DIVISION/GROUP	A KEN JOHNSON
SAFETY OFFICER	RYAN CLOUD 509-528-6196 BONNIE ROGERS 509-713-9107 (T)	DIVISION/GROUP	S BENJAMIN J LIPPERT 509-675-6362
4. Agency/Organization Representative(s):		DIVISION/GROUP	STRUCTURE ROBERT MOORE 509-366-8777
Agency/Organization	Name	DIVISION/GROUP	NIGHT FRANK DAHLQUIST 425-359-3055
DNR- NW REGION ADMIN	JAY S GUTHRIE	7b. Air Operations Branch:	
DNR - NW REGION REP	SHANNON N CLARK	AIR OPS BRANCH DIRECTOR	
USFS DISTRICT RANGER/ AA	JOE NEAL	AIR ATTACK SUPERVISOR	
CHIEF DEPUTY STATE FIRE MARSHALL	ESTHER HERNANDEZ	AIR SUPPORT SUPERVISOR	
WA STATE PATROL	LT. DEION GLOVER	8. Finance/Administration Section:	
BNSF	RYAN KUBO	CHIEF	PAULA JAMES 808-298-1386
SNOHOMISH CO DEM	JARROD DIBBLE	PTRC	JANET MCINTOSH
KING CO DEM	ALYSHA KAPLAN	TIME UNIT	JEANNE CHRISTENSEN
SNOHOMISH CO SHERIFF	LT. MIKE MARTIN		
KING CO SHERIFF	CAPT. PETER HORVATH		
SKY VALLEY FD #26	CHIEF ERIC ANDREWS		
SKYKOMISH FD #50	CHIEF JAMES KNISLEY		
LEAD READ	MATT KENNEY		
5. Planning Section:			
CHIEF	RYAN W SCHARNHORST 509-432-1016 PATRICK K REID 509-537-6343 (T)		
SCKN/DEMOB	JULIA EVERTA 707-683-6782		
GIS SPECIALIST	RACHEL ARMSTRONG (VIRTUAL) MICHAEL ANTHONY PENA (T)		
TECHNOLOGY SUPPORT SPECIALIST	DREW BONO (VIRTUAL)		
INCIDENT METEOROLOGIST			
6. Logistics Section:			
CHIEF	CINDY PRESTON 509-607-9724		
DEPUTY	JOSH AMBROSE 360-310-0401 MICHAEL HENDRICKS 509-948-0441		
GROUND SUPPORT UNIT	KEVIN EUGENE SELL MARYAN MAJIDIAN		
9. Prepared By:	Name: RYAN SCHARNHORST	Position/Title: PSC3	Signature:
ICS 203	IAP Page	Date/Time: 10/06/2022 1532	



INCIDENT Weather Forecast



FORECAST NO: 21
PREDICTION FOR: 0700 - 0700
SHIFT DATE: October 7, 2022
FORECAST ISSUED: 1700 PDT Oct 6, 2022

NAME OF FIRE: Bolt Creek
UNIT: WA-NDC
SIGNED: *Christian Cassell*
Incident Meteorologist

WEATHER DISCUSSION: Elevated fire weather conditions are expected today as the light easterly wind event winds down this morning, but with relatively unstable conditions developing this afternoon. Light easterly or downslope/downvalley winds will prevail with a light westerly wind push across the incident area this afternoon. Temperatures will continue to approach record highs in the lower to mid-80s.

WEATHER FORECAST:

WEATHER: Mostly Cloudy, but with clearing toward 1800 hrs. Areas of smoke.

TEMPERATURES: 68 to 75 ridges and upper slopes; 83 to 87 lower slopes and valleys.

HUMIDITY: 28 to 38 percent.

20 FT WINDS:

RIDGETOP - East 4 to 7 mph with gusts 9 to 12 mph becoming West around 3 to 7 mph with gusts as high as 12 mph in the afternoon.

SLOPE/VALLEY - East 3 to 7 mph becoming West 3 to 6 mph with gusts up to 10 mph in the afternoon.

HAINES INDEX: 5 (Moderate)

STABILITY/INVERSION: Inversion lifting between 1000 and 1300 hrs.

OUTLOOK FOR TONIGHT: Clear. Areas of smoke. Low temperatures in the 50s to lower-60s. Maximum humidity 45 to 65 percent, lowest on mid-slopes and ridges. East wind 3 to 6 mph with gusts to 10 mph.

OUTLOOK FOR SATURDAY:

WEATHER: Sunny. Areas of smoke.

TEMPERATURES: 68 to 75 ridges and upper slopes; 81 to 87 lower slopes and valleys.

HUMIDITY: 28 to 38 percent.

20 FT WINDS:

RIDGETOP - East 4 to 7 mph with gusts 9 to 14 mph becoming West 3 to 7 mph with gusts to 12 mph in the afternoon.

SLOPE/VALLEY - East 3 to 7 mph becoming West 3 to 6 mph with gusts to 10 mph in the afternoon.

HAINES INDEX: 5 (Moderate)

STABILITY/INVERSION: Inversion lifting between 1000 and 1400 hrs.

EXTRA INFORMATION:

Sunrise: 0713

Sunset: 1832

Division/Group Assignment List (ICS 204 WF)
Controlled Unclassified Information//Basic

1. Incident Name:		3.	
BOLT CREEK		Branch:	Division/Group
2. Operational Period: DAY/NIGHT SHIFT		I	A
Date/Time From: 10/07/2022 0700 FRI	Date/Time To: 10/08/2022 0659 SAT		
4. Operations Personnel			
OPERATIONS CHIEF	RYAN NICHOLLS 509-430-1606	PLANNING OPS	DAN STUCKI801-860-7865
FIELD OPS		DIVISION/GROUP SUPERVISOR	KENNETH JOHNSON 509-496-5452

7. Special Instructions:

- Text hourly weather observations to IMET at 240-778-5298.
- Helicopter 346 is available between divisions when able to fly. Comms on Air to Ground, Channel 13.
- Special Instructions for Highway: In the event of trees or debris falling on the highway and interrupting traffic notify WSDOT. Block the road lane using fire apparatus and try to mitigate the hazard if possible.
- Back haul 5000' of hose from Drop Point 20.

8. Division/Group Communication Summary						
Function	Channel	RX Frequency N/W	RX Tone/NAC	TX Frequency N/W	TX Tone/NAC	Mode
TACTICAL	1	151.3100	118.8	151.3100	118.8	A
COMMAND	7	159.4125	118.8	151.4450	118.8	A
COMMAND	8	159.3750	118.8	151.3250	118.8	A
AIR TO GROUND	12	159.2700	103.5	159.2700	103.5	A
AIR TO GROUND	13	151.2875	103.5	151.2875	103.5	A
AIR GUARD	16	168.6250	000.0	168.6250	110.9	A

9. Prepared By (Resource Unit Leader)		Approved By (Planning Section Chief)		Date	Time
RYAN SCHARNHORST		RYAN SCHARNHORST		10/06/2022	1532

Division/Group Assignment List (ICS 204 WF)
Controlled Unclassified Information//Basic

1. Incident Name:			3.			
BOLT CREEK			Branch:		Division/Group	
2. Operational Period: DAY/NIGHT SHIFT			I		A	
Date/Time From: 10/07/2022 0700 FRI	Date/Time To: 10/08/2022 0659 SAT					
4. Operations Personnel						
OPERATIONS CHIEF		RYAN NICHOLLS 509-430-1606		PLANNING OPS		DAN STUCKI801-860-7865
FIELD OPS				DIVISION/GROUP SUPERVISOR		KENNETH JOHNSON 509-496-5452
5. Resources Assigned this Period						
Strike Team / Task Force / Resource Designator		LWD	Leader	Number Persons	Drop Off PT./Time	Pick Up PT./Time
EMT BOE 360-912-3764		10/12	JOSH BOE	1	ICP/0700	ICP/1900
EMT LUKER 425-350-3377		10/12	JASON LUKER	1	ICP/0700	ICP/1900
6. Control Operations/Work Assignments:						
<ul style="list-style-type: none"> • Structure and infrastructure protection. • Prevent fire from crossing Highway 2 to the south. • Patrol primary control lines. • Provide point protection around structures. • Assess opportunities along the 6510 road to clean up the unburned island. 						
7. Special Instructions:						
<p>*** Maintain Initial Attack (IA) availability.</p> <ul style="list-style-type: none"> • Ambulance (E-144), AMBU 2 is staged at Skykomish. • Assess suppression repair needs in field maps. 						
8. Division/Group Communication Summary						
Function	Channel	RX Frequency N/W	RX Tone/NAC	TX Frequency N/W	TX Tone/NAC	Mode
TACTICAL	1	151.3100	118.8	151.3100	118.8	A
COMMAND	7	159.4125	118.8	151.4450	118.8	A
COMMAND	8	159.3750	118.8	151.3250	118.8	A
AIR TO GROUND	12	159.2700	103.5	159.2700	103.5	A
AIR TO GROUND	13	151.2875	103.5	151.2875	103.5	A
AIR GUARD	16	168.6250	000.0	168.6250	110.9	A
9. Prepared By (Resource Unit Leader)			Approved By (Planning Section Chief)		Date	Time
RYAN SCHARNHORST			RYAN SCHARNHORST		10/06/2022	1532

Division/Group Assignment List (ICS 204 WF)
Controlled Unclassified Information//Basic

1. Incident Name:			3.			
BOLT CREEK			Branch:		Division/Group	
2. Operational Period: DAY/NIGHT SHIFT			I		A	
Date/Time From: 10/07/2022 0700 FRI	Date/Time To: 10/08/2022 0659 SAT					
4. Operations Personnel						
OPERATIONS CHIEF		RYAN NICHOLLS 509-430-1606		PLANNING OPS		DAN STUCKI801-860-7865
FIELD OPS				DIVISION/GROUP SUPERVISOR		KENNETH JOHNSON 509-496-5452
5. Resources Assigned this Period						
Strike Team / Task Force / Resource Designator		LWD	Leader	Number Persons	Drop Off PT./Time	Pick Up PT./Time
O-193 TFL JOTHAN MCGAUGHEY 360-595-3801		10/13		1	ICP/0700	ICP/1900
O-185 STEN ETRINGER (T) *** 360-319-2775		10/14		1	ICP/0700	ICP/1900
E-167 ENG5 WA-NWS 5202 ***		10/13	ISAAC DUGGER	4	ICP/0700	ICP/1900
E-168 ENG5 WA-OLS 1201		10/13	FELIPE BARRAGAN	4	ICP/0700	ICP/1900
E-169 ENG5 WA-NWS 5101		10/13	DOUGLAS LANNING	4	ICP/0700	ICP/1900
E-170 ENG5 WA-PCS 2300		10/13	GRANT EASTHAM	3	ICP/0700	ICP/1900
E-171 ENG5 WA-NES 7412 ***		10/13	CORBIN EDMONSON	4	ICP/0700	ICP/1900
E-143 WAT4 T195 SKYKOMISH FIRE		10/13	ROB CAMPBELL	1	ICP/0700	ICP/1900
O-140 STEN KURT M YEAROUT 626-695-8437		10/07		1	ICP/0700	ICP/1900
O-142 STEN ROY ADAMS (T) 909-200-0806		10/07		1	ICP/0700	ICP/1900
E-130 ENG LATE SUMMERS WILDFIRE		10/12	NOLAN ETENHOFER	3	ICP/0700	ICP/1900
E-131 ENG MEADOW WILDFIRE		10/12	DAMIEN RAMON	3	ICP/0700	ICP/1900
E-133 ENG RAINIER WILDFIRE		10/12	BRICYN ABDUL	3	ICP/0700	ICP/1900
E-134 ENG NORTHRIDGE WILDFIRE		10/12	BRADLEY BECK	3	ICP/0700	ICP/1900
E-135 ENG RAINIER WILDFIRE		10/12	SPENCER SHAW	3	ICP/0700	ICP/1900
O-177 FMOD RAINSTORM 509-899-5432		10/11	TOMMY PRATT	2	ICP/0700	ICP/1900
O-145 SOFR ANDY MURRIN 541-784-7774		10/15		1	ICP/0700	ICP/1900
E-144 AMBU2 - MEDIC 81A 360-265-9036		10/08	THERON RAHIER	2	ICP/0700	ICP/1900
8. Division/Group Communication Summary						
Function	Channel	RX Frequency N/W	RX Tone/NAC	TX Frequency N/W	TX Tone/NAC	Mode
TACTICAL	1	151.3100	118.8	151.3100	118.8	A
COMMAND	7	159.4125	118.8	151.4450	118.8	A
COMMAND	8	159.3750	118.8	151.3250	118.8	A
AIR TO GROUND	12	159.2700	103.5	159.2700	103.5	A
AIR TO GROUND	13	151.2875	103.5	151.2875	103.5	A
AIR GUARD	16	168.6250	000.0	168.6250	110.9	A
9. Prepared By (Resource Unit Leader)			Approved By (Planning Section Chief)		Date	Time
RYAN SCHARNHORST			RYAN SCHARNHORST		10/06/2022	1532

Division/Group Assignment List (ICS 204 WF)
Controlled Unclassified Information//Basic

1. Incident Name:			3.			
BOLT CREEK			Branch:		Division/Group	
2. Operational Period: DAY/NIGHT SHIFT			I		S	
Date/Time From: 10/07/2022 0700 FRI	Date/Time To: 10/08/2022 0659 SAT					
4. Operations Personnel						
OPERATIONS CHIEF		RYAN NICHOLLS 509-430-1606		PLANNING OPS		DAN STUCKI 801-860-7865
FIELD OPS				DIVISION/GROUP SUPERVISOR		BENJAMIN J LIPPERT 509-675-6362
7. Special Instructions:						
<ul style="list-style-type: none"> • Improve spur 120 off of 6022 • Continue suppression repair • Helicopter 346 is available between divisions if able to fly. Comms on Air to Ground Channel 13 • Reassess current indirect line placement for effectiveness. • Special Instructions for the Highway: In the event of trees or debris falling on the highway and interrupting traffic notify WSDOT. Block the road lane using fire apparatus and try to mitigate the hazard if possible. 						
8. Division/Group Communication Summary						
Function	Channel	RX Frequency N/W	RX Tone/NAC	TX Frequency N/W	TX Tone/NAC	Mode
TACTICAL	2	151.3400	118.8	151.3400	118.8	A
COMMAND	7	159.4125	118.8	151.4450	118.8	A
COMMAND	8	159.3750	118.8	151.3250	118.8	A
AIR TO GROUND	12	159.2700	103.5	159.2700	103.5	A
AIR TO GROUND	13	151.2875	103.5	151.2875	103.5	A
AIR GUARD	16	168.6250	000.0	168.6250	110.9	A
9. Prepared By (Resource Unit Leader)			Approved By (Planning Section Chief)		Date	Time
RYAN SCHARNHORST			RYAN SCHARNHORST		10/06/2022	1532

Division/Group Assignment List (ICS 204 WF)
Controlled Unclassified Information//Basic

1. Incident Name:			3.			
BOLT CREEK			Branch:		Division/Group	
2. Operational Period: DAY/NIGHT SHIFT			I		S	
Date/Time From: 10/07/2022 0700 FRI	Date/Time To: 10/08/2022 0659 SAT					
4. Operations Personnel						
OPERATIONS CHIEF		RYAN NICHOLLS 509-430-1606		PLANNING OPS		DAN STUCKI 801-860-7865
FIELD OPS				DIVISION/GROUP SUPERVISOR		BENJAMIN J LIPPERT 509-675-6362
5. Resources Assigned this Period						
Strike Team / Task Force / Resource Designator		LWD	Leader	Number Persons	Drop Off PT./Time	Pick Up PT./Time
EMT FIELD 541-399-6943		10/11	CHRISTY FIELD	1	ICP/0700	ICP/1900
6. Control Operations/Work Assignments:						
<ul style="list-style-type: none"> • Structure and infrastructure protection. • Prevent fire from crossing Highway 2 to the west. • Patrol primary control lines. • Provide point protection around structures 						
7. Special Instructions:						
<p>*** Maintain Initial Attack (IA) availability.</p> <ul style="list-style-type: none"> • Text hourly weather observations to IMET at 240-778-5298. • Assess suppression repair needs in field maps • Develop alternative options for fire activity near DP100 • Chipping 6022 Road 						
8. Division/Group Communication Summary						
Function	Channel	RX Frequency N/W	RX Tone/NAC	TX Frequency N/W	TX Tone/NAC	Mode
TACTICAL	2	151.3400	118.8	151.3400	118.8	A
COMMAND	7	159.4125	118.8	151.4450	118.8	A
COMMAND	8	159.3750	118.8	151.3250	118.8	A
AIR TO GROUND	12	159.2700	103.5	159.2700	103.5	A
AIR TO GROUND	13	151.2875	103.5	151.2875	103.5	A
AIR GUARD	16	168.6250	000.0	168.6250	110.9	A
9. Prepared By (Resource Unit Leader)			Approved By (Planning Section Chief)		Date	Time
RYAN SCHARNHORST			RYAN SCHARNHORST		10/06/2022	1532

Division/Group Assignment List (ICS 204 WF)
Controlled Unclassified Information//Basic

1. Incident Name:			3.			
BOLT CREEK			Branch:		Division/Group	
2. Operational Period: DAY/NIGHT SHIFT			I		S	
Date/Time From: 10/07/2022 0700 FRI	Date/Time To: 10/08/2022 0659 SAT					
4. Operations Personnel						
OPERATIONS CHIEF		RYAN NICHOLLS 509-430-1606		PLANNING OPS		DAN STUCKI 801-860-7865
FIELD OPS				DIVISION/GROUP SUPERVISOR		BENJAMIN J LIPPERT 509-675-6362
5. Resources Assigned this Period						
Strike Team / Task Force / Resource Designator		LWD	Leader	Number Persons	Drop Off PT./Time	Pick Up PT./Time
O-206.19 TFLD MICHAEL JAMES NICK		10/19		1		
C-11 CR2I - OWF ENTIAT ***		10/08	TY SCHWINGHAMMER	15	ICP/0700	ICP/1900
C-17 CR2I MT BAKER IA		10/18	ERIK USHER	20	ICP/0700	ICP/1900
O-217 FELB DAVID WESTCOTT		10/09		1	ICP/0700	ICP/1900
O-219 FELB(T) DANIEL OAKLAND		10/18		1	ICP/0700	ICP/1900
O-211 FMOD DBA BAILEY LOGGING		10/18	BEN A NEWMAN	2	ICP/0700	ICP/1900
O-194 FMOD - MOUNTAIN WEST		10/14	MATT HOLZNAGEL	2	ICP/0700	ICP/1900
E-149 DOZ2 BURGESS LOGGING		10/10	BUZZ CREIGHTON	2	ICP/0700	ICP/1900
E-150 CHP2 BROTHERS FIRE		10/19	SHANE MUSTARD	3	ICP/0700	ICP/1900
O-165 STEN GREG SEALS *** 360-480-9485		10/14		1	ICP/0700	ICP/1900
E-139 ENG5 BLACKSTONE FORESTRY		10/20	CASEY FOX	3	ICP/0700	ICP/1900
E-138 ENG4 CHEWACK WILDFIRE INC		10/08	ANDREW GRAVES	3	ICP/0700	ICP/1900
E-137 ENG3 BAILEY ENTERPRISES, L.L.C.		10/08	GREG BAILEY	3	ICP/0700	ICP/1900
E-136 ENG6 LIBERTY WILDFIRE		10/13	CLIFF MIDDLETON	3	ICP/0700	ICP/1900
E-174 WTS2 SNOHOMISH FD26		10/14	ERNIE WALTERS	1	ICP/0700	ICP/1900
E-176 ENG5 OSPREY WILDFIRE, LLC		10/20	DUSTYN WILLIAMS	3	ICP/0700	ICP/1900
O-151 SOFR DONALD GARRINGER 208-819-2778		10/06		1	ICP/0700	ICP/1900
O-172 MEDIC ANGEL 541-399-6943		10/07	ANGEL THORSVOLD	1	ICP/0700	ICP/1900
8. Division/Group Communication Summary						
Function	Channel	RX Frequency N/W	RX Tone/NAC	TX Frequency N/W	TX Tone/NAC	Mode
TACTICAL	2	151.3400	118.8	151.3400	118.8	A
COMMAND	7	159.4125	118.8	151.4450	118.8	A
COMMAND	8	159.3750	118.8	151.3250	118.8	A
AIR TO GROUND	12	159.2700	103.5	159.2700	103.5	A
AIR TO GROUND	13	151.2875	103.5	151.2875	103.5	A
AIR GUARD	16	168.6250	000.0	168.6250	110.9	A
9. Prepared By (Resource Unit Leader)			Approved By (Planning Section Chief)		Date	Time
RYAN SCHARNHORST			RYAN SCHARNHORST		10/06/2022	1532

Division/Group Assignment List (ICS 204 WF)
Controlled Unclassified Information//Basic

1. Incident Name:		3.				
BOLT CREEK		Branch:		Division/Group		
2. Operational Period:		DAY/NIGHT SHIFT				
Date/Time From:		Date/Time To:		I		
10/07/2022 0700 FRI		10/08/2022 0659 SAT		STRUCTURE		
4. Operations Personnel						
OPERATIONS CHIEF		RYAN NICHOLLS		BRANCH DIRECTOR		
DIVISION/GROUP SUPERVISOR		ROBERT MOORE 509-366-8777		AIR ATTACK SUPERVISOR		
PLANNING OPS		DAN STUCKI 801-675-6362				
5. Resources Assigned this Period						
Strike Team / Task Force / Resource Designator		LWD	Leader	Number Persons	Drop Off PT./Time	Pick Up PT./Time
O-197 TFLD ADAM KENNETH JONES (T) 509-683-2092		10/16		1	/0700	/1900
E-						
E-						
E-						
E-						
E-						
6. Control Operations/Work Assignments:						
Inventory and create a structure protection plan for residences west of the 6022 road.						
Maintain current protection along the Hwy 2 corridor.						
Patrol for spot fires.						
7. Special Instructions:						
Maintain awareness for construction traffic along 63 Road.						
Establish Drop Point(s) based upon needs.						
8. Division/Group Communication Summary						
Function	Channel	RX Frequency N/W	RX Tone/NAC	TX Frequency N/W	TX Tone/NAC	Mode
TACTICAL	3	151.2125	118.8	151.2125	118.8	A
COMMAND	7	159.4125	118.8	151.4450	118.8	A
COMMAND	8	159.3750	118.8	151.3250	118.8	A
AIR TO GROUND	12	159.2700	103.5	159.2700	103.5	A
AIR TO GROUND	13	151.2875	103.5	151.2875	103.5	A
AIR GUARD	16	168.6250	000.0	168.6250	110.9	A
9. Prepared By (Resource Unit Leader)			Approved By (Planning Section Chief)		Date	Time
RYAN SCHARNHORST			RYAN SCHARNHORST		10/06/2022	1524

Division/Group Assignment List (ICS 204 WF)
Controlled Unclassified Information//Basic

1. Incident Name:			3.			
BOLT CREEK			Branch:		Division/Group	
2. Operational Period: DAY/NIGHT SHIFT			NIGHT SHIFT			
Date/Time From: 10/07/2022 0700 FRI		Date/Time To: 10/08/2022 0659 SAT				
4. Operations Personnel						
OPERATIONS CHIEF		RYAN NICHOLLS 509-430-1606		PLANNING OPS		DAN STUCKI 801-675-6362
5. Resources Assigned this Period						
Strike Team / Task Force / Resource Designator		LWD	Leader	Number Persons	Drop Off PT./Time	Pick Up PT./Time
O-168 STEN FRANK DAHLQUIST		10/14	425-359-3055	1	ICP/1900	ICP/0700
E-140 ENG5 SCFD #15 BR60		10/13	BRANDON JONES	2	ICP/1900	ICP/0700
E-141 ENG5 SCFD #22 BR68		10/11	CHAD LEE	2	ICP/1900	ICP/0700
E-145 ENG5 WA-PCS 2203		10/07	THOMAS TANGEN	3	ICP/1900	ICP/0700
E-146 ENG5 WA-PCS 2302		10/07	JOSEPH SNAZA 360-762-1041	3	ICP/1900	ICP/0700
E-163 ENG5 WA-SES 4303		10/11	GAVIN BRUMLEY 509-899-7497	4	ICP/1900	ICP/0700
6. Control Operations/Work Assignments:						
Structure and infrastructure protection. Prevent fire from crossing Highway 2 to the south and west. Patrol primary control lines. Provide point protection around structures						
7. Special Instructions:						
Use 911 Dispatch if fire threatens structures. In addition call Planning Ops Dan Stucki (801) 860-7865						
8. Division/Group Communication Summary						
Function	Channel	RX Frequency N/W	RX Tone/NAC	TX Frequency N/W	TX Tone/NAC	Mode
TACTICAL	1	151.3100	118.8	151.3100	118.8	A
COMMAND	7	159.4125	118.8	151.4450	118.8	A
COMMAND	8	159.3750	118.8	151.3250	118.8	A
AIR TO GROUND	12	159.2700	103.5	159.2700	103.5	A
AIR TO GROUND	13	151.2875	103.5	151.2875	103.5	A
AIR GUARD	16	168.6250	000.0	168.6250	110.9	A
9. Prepared By (Resource Unit Leader)			Approved By (Planning Section Chief)		Date	Time
RYAN SCHARNHORST			RYAN SCHARNHORST		10/06/2022	1532

Last Work Day

Incident: BOLT CREEK US-WA-NWS-
10/07/2022 - 10/07/2022

COMMAND

OVERHEAD

10/07/2022

SOF2	O-167	HARNDEN, RICHARD D
------	-------	--------------------

LOGISTICS

EQUIPMENT

10/07/2022

AMB1	E-144	AMB1 - MEDIC 81A THERON RAHIER
------	-------	--------------------------------

OVERHEAD

10/07/2022

BCMG	O-157	COOKSEY, BENJAMIN TODD
EMTF	O-162	RAMOS, JESSE SILVANO
EMTP	O-161	RAHIER, THERON
RADO	O-153	HUANG, STEVEN TZU-PING

OPERATIONS

EQUIPMENT

10/07/2022

ENG3	E-142	ENG3 - MSF - E-12 SEAN HARRIS
ENG5	E-145	ENG5 - 2203 - WA-PCS THOMAS TANGEN
ENG5	E-146	ENG5 - 2302 - WA-PCS

OVERHEAD

10/07/2022

STEN	O-142	ADAMS, ROY
STEN	O-140	YEAROUT, KURT M

PLANS

OVERHEAD

10/07/2022

IMET	O-149	CASELL, CHRISTIAN
------	-------	-------------------

IAP

Bolt Creek

WA-NWS-000150

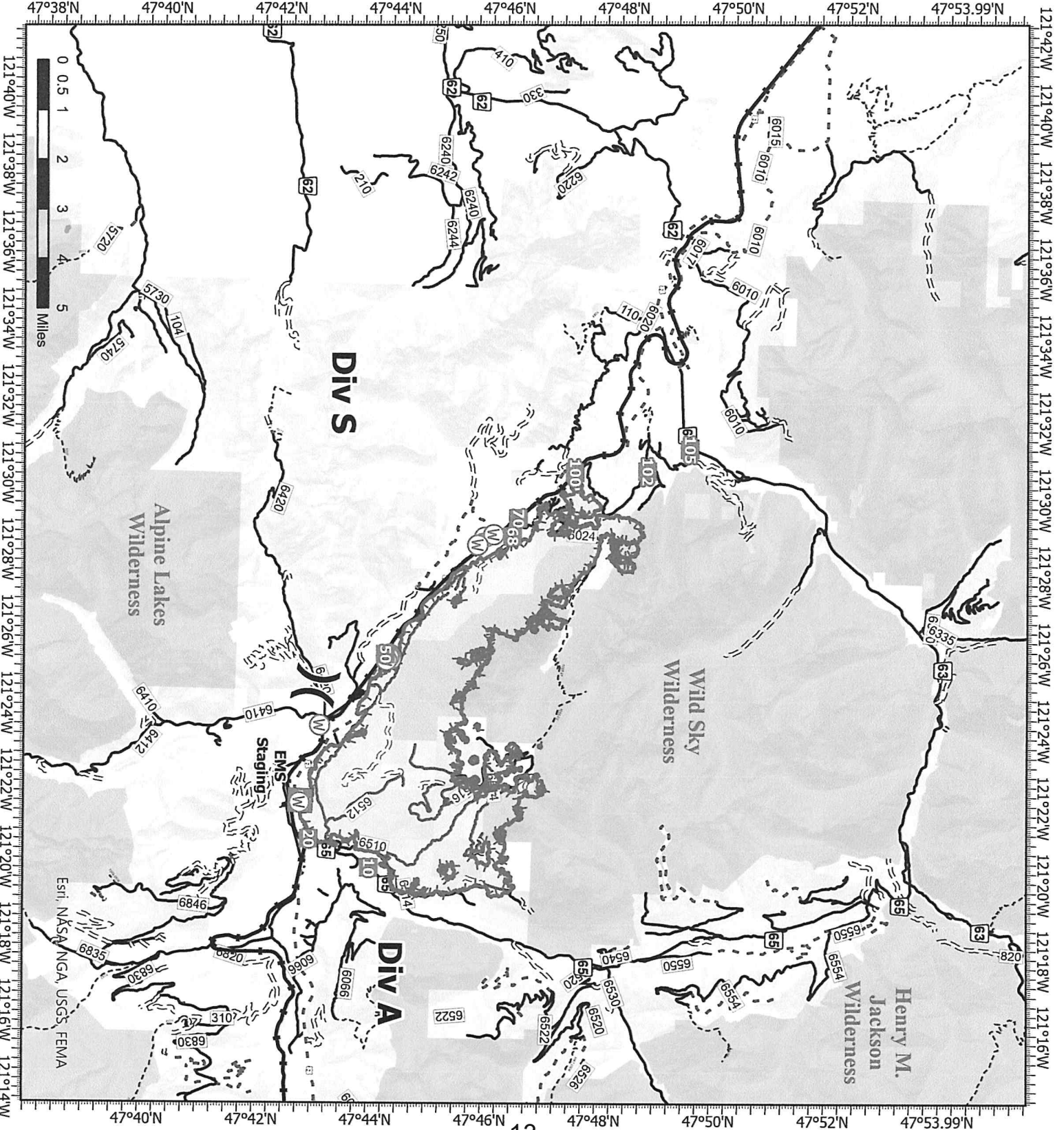
10/07/2022

12,921 acres at 10/04/2022 @2100

- X Division Break
- Medical
- Drop Point
- ⊕ Water Source
- ⊖ Uncontaminated
- ⊕ Bureau of Land Management (BLM)
- State
- US Forest Service (USFS)
- Private
- Undetermined
- ➔ Railroads
- Open Roads
- == Closed Roads
- - - Decommissioned Roads
- - - Decommissioned Roads
- - - Trail
- Wilderness



Map updated:
10/6/2022 1835



INCIDENT RADIO COMMUNICATIONS PLAN (ICS 205)

Controlled Unclassified Information//Basic

1. Incident Name: BOLT CREEK	2. Date/Time Prepared: Date: 10/06/2022 Time: 1532	3. Operational Period: DAY/NIGHT SHIFT Date/Time From: 10/07/2022 0700 Date/Time To: 10/08/2022 0659 FRI SAT
--	---	--

4. Basic Radio Channel Use:												
Zone Group	Ch #	Function	Channel Name/Trunked Radio System Talkgroup	Assignment	RX Freq	RX Tone/NAC	TX Freq	TX Tone/NAC	Mode (A, D, or M)	Remarks		
	1	TACTICAL	TAC 1	DIV P/A	151.3100	118.8	151.3100	118.8	A			
	2	TACTICAL	TAC 2	DIV T/S	151.3400	118.8	151.3400	118.8	A			
	3	TACTICAL	TAC 3	STRUCTURE GROUP	151.2125	118.8	151.2125	118.8	A			
	4	TACTICAL	DNR COM	UNASSIGNED	151.4150	103.5	151.4150	103.5	A	IA USE ONLY		
	5	TACTICAL	REDNET	UNASSIGNED	153.8300	000.0	153.8300	000.0	A	IA USE ONLY		
	6	TACTICAL	FS FTAC	UNASSIGNED	168.5625	000.0	168.5625	000.0	A	IA USE ONLY		
	7	COMMAND	CMD 7	ALL DIVS	159.4125	118.8	151.4450	118.8	A	LOCATED NORTH OF INDEX LINKED TO CMD 8		
	8	COMMAND	CMD 8	ALL DIVS	159.3750	118.8	151.3250	118.8	A	LOCATED ON SOBIESKI LINKED TO CMD 7		
	9	COMMAND	SNOHOMIS	FOREST NET	159.4350	141.3	151.1900	141.3	A	DISPATCH CALL SIGN "NW DISPATCH" IA USE ONLY		
	10	COMMAND	SULTAN	FOREST NET	159.2475	141.3	151.1825	141.3	A	DISPATCH CALL SIGN "NW DISPATCH" IA USE ONLY		
	11	COMMAND	SOBIESKI	FOREST NET	169.5750	146.2	164.9625	156.7	A	DISPATCH CALL SIGN "PUGET SOUND" IA USE ONLY		
	12	AIR TO GROUND	DNR A/G1	ALL DIVS	159.2700	103.5	159.2700	103.5	A	PRIMARY A/G		
	13	AIR TO GROUND	DNR A/G2	ALL DIVS	151.2875	103.5	151.2875	103.5	A	SECONDARY A/G		
	14	AIR TO GROUND	A/G 41	UNASSIGNED	167.4750	000.0	167.4750	000.0	A			
	15	AIR TO GROUND	VMED 29	MEDEVAC	155.3475	156.7	155.3475	156.7	A	MEDEVAC		
	16	AIR GUARD	AIRGUARD	EMERGENCY USE	168.6250	000.0	168.6250	110.9	A	EMERGENCY USE		

5. Special Instructions:

6. Prepared By (Communications Unit Leader) Name: JEFF MINER
Signature: *Jeff Miner*

ICS 205 IAP Page Date/Time: 10/06/2022 1532

MEDICAL PLAN (ICS 206 WF)

1. Incident/Project Name				2. Operational Period			
Bolt Creek				Date/Time: 10/07/2022-10/8/2022			
3. Ambulance Services							
Name	Complete Address	Phone	Advanced Life Support (ALS)				
			YES	NO			
Sky Valley Fire #54	42013 State HWY 2-Gold Bar	911	X				
Sultan Fire #51	32905 Cascade View Dr	911			X		
Skykomish FD #50	105 E Old Cascade HWY	911			X		
4. Air Ambulance Services							
Name	Phone	Type of Aircraft & Capability					
Airlift Northwest	911 (800-426-2430)	Rotor					
Life Flight	911 (800-232-0911)	Rotor					
5. Hospitals							
Name Complete Address	Degrees Decimal Minutes	Travel Time Air	From ICP Ground	Phone	Helipad Yes No	Level of Care Facility	
Evergreen Health Monroe 14701 179th Ave SE Monroe, WA	Lat: N/A	N/A	5 MIN	425-877-9371	X	Level 4	
	Long: N/A						
Providence Medical Center 1321 Colby Ave Everett, WA	Lat: 47° 59' 58.5" N	10 MIN	25 MIN	425-404-5601	X	Level 2	
	Long: 122° 12' 21.5" W						
Harborview Medical 325 9th Ave Seattle, WA	Lat: 47° 36' 10.8" N	15 MIN	60 MIN	206-744-3000	X	Level 1 Trauma Burn Center	
	Long: 122° 19' 29.6" W						
DIVISIONS							
ICP	EMS Responders:		Kevin Palm-MEDL 909-921-8490 Chloe Read-MEDL(t)/COVID Liaison 253-569-2933				
DIV A	EMS Responders & Capabilities:		Medic-Remington Becker / EMT-Jason Luker / EMT-Josh Boe				
	Medical Emergency Channel:		Command				
	Air:		15 Minutes				
	Ground:		65 Minutes				
	Approved Heli Spot:		Skykomish Airport				
	Lat:		47° 42' 38" N				
	Long:		121° 20' 25" W				
DIV S	EMS Responders & Capabilities:		AMBU 2-Theron Rahier / Medic-Angela Thorsvold / EMTF-Christy Field				
	Medical Emergency Channel:		Command				
	Air:		15 Minutes				
	Ground:		50 Minutes				
	Approved Heli Spot:		H-63 (Big Field)	H-67 (Parking Lot)	H-30 (Station 54)		
	Lat:		47° 49' 05" N	47° 49' 07" N	47° 50' 31" N		
	Long:		121° 34' 01" W	121° 33' 13" W	121° 40' 06" W		
NIGHT SHIFT	EMS Responders & Capabilities:		AMBO 1-Josh Chisnell				
	Medical Emergency Channel:		Command				
	Approved Heli Spot DIV A		Skykomish Airport				
	Lat:		47° 42' 38" N				
	Long:		121° 20' 25" W				
	Approved Heli Spot DIV S		H-63 (Big Field)	H-67 (Parking Lot)	H-30 (Station 54)		
	Lat:		47° 49' 05" N	47° 49' 07" N	47° 50' 31" N		
Long:		121° 34' 01" W	121° 33' 13" W	121° 40' 06" W			
Prepared by (Medical Unit Leader)		Date:	Reviewed By (Safety Officer)			Date:	
Chloe Read MEDL(t) <i>Chloe Read</i>		10/6/22	Rich Harnden SOF2 <i>Rich Harnden</i>			10/6/22	
In case of emergency (Green, Yellow or Red), establish an IC for the IWI, follow your medical incident report and contact communications on command. Establish your PACE (Primary, Alternative, Contingency, Emergency) model for medical emergency extraction.							

SAFETY MESSAGE/PLAN (ICS 208)

1. Incident Name: BOLT CREEK	2. Operational Period: Date From: 10/07/22 Time From: 0700	Date To: 10/07/22 Time To: 0700
-------------------------------------	--	------------------------------------

MAJOR HAZARDS AND RISKS: Driving, Hazard Trees, Steep Terrain, Rolling Materials, Rugged Access, Heavy Equipment Operations, Cumulative Fatigue.

Safety Message/Expanded Safety Message, Safety Plan, Site Safety Plan:

Risks to fireline personnel increase significantly during transfer of command periods regardless of the size or complexity of the incident. There is a high potential for fatalities, serious injuries, or incidents during transfer of command. Be proactive in mitigating the risks by proper implementation of

LCES - Lookouts, Communications, Escape Routes, and Safety Zones.

Factors for increased risks to fireline personnel during transition periods include:

- No or poor briefing of incoming personnel.
- Lack of fire weather and behavior information, both forecast and observed.
- Communications: face-to-face briefings may not be possible and radio frequencies may be overextended and/or changing due to the increased demands on the system.
- Initial attack resources may not have checked in and the Incident Commander (IC) may not be aware of the number, type, and location of all resources.
- Location of safety zones and escape routes may not be known and communicated to all resources.
- Not all resources know who is in command.

Mitigation actions to take:

- **Lookouts:** post and maintain your own lookouts.
- **Communications:** maintain existing communications with your own and adjacent resources, as well as your original supervisor, while you are developing communications with incoming adjacent resources and your new supervisor.
- **Escape routes and safety zones:** identify escape routes and ensure incoming resources are aware of their locations; be aware that your original escape routes and safety zones may no longer be accessible due to changing fire behavior or your increased distance from them.

4. Site Safety Plan Required? Yes <input type="checkbox"/> No <input type="checkbox"/>
Approved Site Safety Plan(s) Located At:

5. Prepared by: Name: Bonnie Rogers _____ Position/Title: SOFRT _____ Signature: <i>B Rogers</i> _____

ICS 208	IAP Page _____	Date/Time: 10/06/2022 _____
---------	----------------	-----------------------------

INCIDENT: Bolt Creek	DATE: Friday, October 7	TIME: All
MAJOR HAZARDS AND RISKS: Driving, Hazard Trees, Steep Terrain, Rolling Materials, Rugged Access, Heavy Equipment Operations, Cumulative Fatigue.		

Risks to fireline personnel increase significantly during transfer of command periods regardless of the size or complexity of the incident. There is a high potential for fatalities, serious injuries, or incidents during transfer of command. Be proactive in mitigating the risks by proper implementation of **LCES - Lookouts, Communications, Escape Routes, and Safety Zones.**

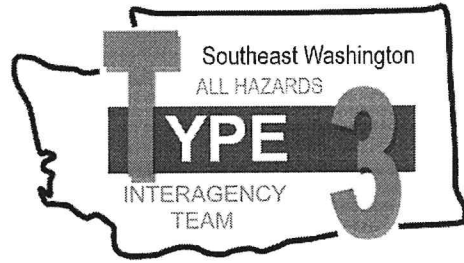
Factors for increased risks to fireline personnel during transition periods include:

- No or poor briefing of incoming personnel.
- Lack of fire weather and behavior information, both forecast and observed.
- Communications: face-to-face briefings may not be possible and radio frequencies may be overextended and/or changing due to the increased demands on the system.
- Initial attack resources may not have checked in and the Incident Commander (IC) may not be aware of the number, type, and location of all resources.
- Location of safety zones and escape routes may not be known and communicated to all resources.
- Not all resources know who is in command.

Mitigation actions to take:

- **Lookouts:** post and maintain your own lookouts.
- **Communications:** maintain existing communications with your own and adjacent resources, as well as your original supervisor, while you are developing communications with incoming adjacent resources and your new supervisor.
- **Escape routes and safety zones:** identify escape routes and ensure incoming resources are aware of their locations; be aware that your original escape routes and safety zones may no longer be accessible due to changing fire behavior or your increased distance from them.

Code of Conduct Incident Personnel



Each individual on this incident is responsible for:

- ☞ Being *ready and able* to perform their assigned duties effectively.
- ☞ Conducting themselves in a manner that treats people with dignity, equality, courtesy, and respect.
- ☞ Abiding by agency ethics and conduct regulations.
- ☞ Reporting any harassment or other inappropriate behavior.

Each individual of this incident has the right to:

- ☞ Work in an environment characterized by safe work practices.
- ☞ Work in a fair and harassment free environment.
- ☞ Say "No" to unwelcome advances or requests for favors.
- ☞ File complaints or grievances through appropriate avenues.

There is zero tolerance for inappropriate behavior while assigned to the incident, including:

- ☞ Illegal drug use
- ☞ Alcohol use
- ☞ Unsafe work practices and activities
- ☞ Discrimination
- ☞ Sexual harassment
- ☞ Fighting, threatening, and abusive behaviors
- ☞ Using social media and electronic communication devices for personal business while engaged in fire assignment duties.
- ☞ Other violations of Fire Service, Washington DNR, and Federal agency standards of conduct.

Failure to adhere to the Code of Conduct could result in dismissal from the incident, with notification to your home unit.

The public expects our best efforts; they see us as professionals in what we say and do. Let's continue to show them we are!

DNR/DOC Camp Crew Guidelines	1. Incident Name	2. Date Prepared	3. Time Prepared
-------------------------------------	------------------	------------------	------------------

ALL PERSONNEL WORKING AROUND OFFENDERS/DNR KITCHENS

This message is from the Department of Natural Resources and Department of Corrections.

- ▶ No person shall be allowed to carry firearms in the area where offenders are working. It is acceptable to secure weapons in vehicles while entering into the working vicinity of offenders.
- ▶ Do not give or take anything from an offender. Offenders are identified by red ball caps or red hard hats.
- ▶ Do NOT take photos or interview offenders without approval from the DNR Inmate Liaison.
- ▶ Do not do any favors for offenders. (Examples: passing on a message, giving tobacco, asking for change, mailing a letter, using a phone. The most innocent act/favor can have consequences that could affect an offender for years.)
- ▶ Report any suspicious act to the Supervisor, DOC Staff or Inmate Liaison.
- ▶ Offenders are not allowed to use tobacco products. Do not use tobacco products in or around kitchen area.
- ▶ Offenders on DNR Crews have committed various crimes. They ARE considered minimum level custody.
- ▶ Treat Offenders with respect, but don't get personal. Practices the correctional distance...don't get personal. Offenders generally feel good with being part of the fire suppression effort; treat them with the same respect and dignity as other fire fighters but, DON'T GET PERSONAL.
- ▶ Offenders are trained in their job assignments and their work ethics. They are held accountable for their job performance and their behavior.
- ▶ Acknowledge crews for a job well done; offenders do good work and appreciate the recognition.
- ▶ Offenders need good professional role models as part of their rehabilitation process. Consider their presence and set good examples by the context of your conversation and choice of language used.

9. Prepared by (Name and Position)

Bolt Creek Fire

Logistics Information

ICP Hours

Food	0600 - 0900 and 1800 – 2100
Medical Tent	0600 – 2100 (available 24 hours – after posted hours, please call the number posted on the medical Yurt.)
Refer Van	0600 – 2000
Showers	05:30 – 1200 and 1500 – 2200
Supply	0600 – 2100
Laundry	Drop off clothes to Supply by 0830 hrs. Expect a 48-hour turn-around. Pick-up for laundry will be at Supply.
Supply Orders	All supply orders need to be into the logistics by 1800 hrs. for Next-day delivery.

All equipment and Overhead request have a 48-hour lag time.

HELICOPTER EXTRACTION OPERATIONS

The intent of helicopter insertion/extraction operations is to facilitate the movement of personnel to and from inaccessible areas. These operations are not meant to be a medical transport resource; life flight and ground transportation should always be ordered in addition to the extraction aircraft and crew.

ORDERING:

- On-scene EMT and/or Incident within Incident IC determines that an extraction helicopter is needed and places the order through the pre-established procedures:
 - Division Supervisor
 - Incident Communications
 - Dispatch Center
- When ordering extraction aircraft provide the following information:
 - Location (Lat/Long) of patient
 - Known Hazards
 - Wind Speed and Direction
 - Terrain
 - Incident Updates

SITE SELECTION:

- The helicopter crew will confirm the extraction location when they arrive on scene. However, a general rule is any clearing that is 10'x10' with visible sight lines to the sky is a suitable extraction site.
- If the terrain is steep, excavating a platform or shelf can make it easier for patient packaging.

QR Code-Short-haul Site Selection Video



CONSIDERATIONS:

- Short-haul and hoist are safe and efficient operations for extracting injured personnel of any severity including "Green" patients.
- Ensure area is clear of non-essential items, hazards, and personnel.
- Rotor wash may affect overhead hazards and blowing dust/debris can create brown out conditions or influence fire behavior.
- Aerial Supervision is valuable for coordinating aviation medevac/extraction missions and should be ordered if available and not currently present.
- The aircrew will make the final assessment of the mission. Always have a contingency plan in case a helicopter cannot complete the request.

DEFINITIONS:

Rescue Hoist: A cable winching device mounted to the helicopter that can lower/raise persons attached to a cable.

- Common cable lengths are 250-300 feet.

Short-haul: To insert or extract one or more persons suspended on a fixed line beneath a helicopter.

- Common short-haul line lengths are 100, 150, and 250 feet. The lines can also be connected for a longer line if the situation requires it.

MEDICAL PLAN (ICS 206 WF)

Controlled Unclassified Information//Basic

Medical Incident Report					
FOR A NON-EMERGENCY INCIDENT, WORK THROUGH CHAIN OF COMMAND TO REPORT AND TRANSPORT INJURED PERSONNEL AS NECESSARY. FOR A MEDICAL EMERGENCY: IDENTIFY ON SCENE INCIDENT COMMANDER BY NAME AND POSITION AND ANNOUNCE "MEDICAL EMERGENCY" TO INITIATE RESPONSE FROM IMT COMMUNICATIONS/DISPATCH.					
Use the following items to communicate situation to communications/dispatch.					
1. CONTACT COMMUNICATIONS / DISPATCH (Verify correct frequency prior to starting report) <i>Ex: "Communications, Div. Alpha. Stand-by for Emergency Traffic."</i>					
2. INCIDENT STATUS: Provide incident summary (including number of patients) and command structure. <i>Ex: "Communications, I have a Red priority patient, unconscious, struck by a falling tree. Requesting air ambulance to Forest Road 1 at (Lat./Long.) This will be the Trout Meadow Medical. IC is TFLD Jones. EMT Smith is providing medical care."</i>					
Severity of Emergency / Transport Priority	<input type="checkbox"/> RED / PRIORITY 1 Life or limb threatening injury or illness. Evacuation need is IMMEDIATE <i>Ex: Unconscious, difficulty breathing, bleeding severely, 2^o - 3^o burns more than 4 palm sizes, heat stroke, disoriented.</i> <input type="checkbox"/> YELLOW / PRIORITY 2 Serious Injury or illness. Evacuation may be DELAYED if necessary. <i>Ex: Significant trauma, unable to walk, 2^o - 3^o burns not more than 1-3 palm sizes.</i> <input type="checkbox"/> GREEN / PRIORITY 3 Minor Injury or illness. Non-Emergency transport <i>Ex: Sprains, strains, minor heat-related illness.</i>				
Nature of Injury or Illness & Mechanism of Injury			<i>Brief Summary of Injury or Illness (Ex: Unconscious, Struck by Falling Tree)</i>		
Transport Request			<i>Air Ambulance / Short Haul/Hoist Ground Ambulance / Other</i>		
Patient Location			<i>Descriptive Location & Lat. / Long. (WGS84)</i>		
Incident Name			<i>Geographic Name + "Medical" (Ex: Trout Meadow Medical)</i>		
On-Scene Incident Commander			<i>Name of on-scene IC of Incident within an Incident (Ex: TFLD Jones)</i>		
Patient Care			<i>Name of Care Provider (Ex: EMT Smith)</i>		
3. INITIAL PATIENT ASSESSMENT: Complete this section for each patient as applicable (start with the most severe patient)					
Patient Assessment: See IRPG page 106					
Treatment:					
4. TRANSPORT PLAN: Evacuation Location (if different): (Descriptive Location (drop point, intersection, etc.) or Lat. / Long.) Patient's ETA to Evacuation Location:					
Helispot / Extraction Site Size and Hazards:					
5. ADDITIONAL RESOURCES / EQUIPMENT NEEDS: <i>Example: Paramedic/EMT, Crews, Immobilization Devices, AED, Oxygen, Trauma Bag, IV/Fluid(s), Splints, Rope rescue, Wheeled litter, HAZMAT, Extrication</i>					
6. COMMUNICATIONS: Identify State Air/Ground EMS Frequencies and Hospital Contacts as applicable					
Function	Channel Name/Number	Receive (RX)	Tone/NAC *	Transmit (TX)	Tone/NAC *
COMMAND					
AIR-TO-GRND					
TACTICAL					
7. CONTINGENCY: Considerations: If primary options fail, what actions can be implemented in conjunction with primary evacuation method? Be thinking ahead.					
8. ADDITIONAL INFORMATION: Updates/Changes, etc.					
REMEMBER: Confirm ETA's of resources ordered. Act according to your level of training. Be Alert. Keep Calm. Think Clearly. Act Decisively.					