

SEWA Team 2



Incident Action Plan

BOLT CREEK

WA-NWS-150

PN P14322 (1522)

FMAG 221-HPS

OPERATION PERIOD

October 9, 2022, 07:00


to

October 10, 2022, 07:00



Sunday – National Fallen Firefighters Day

ORGANIZATION ASSIGNMENT LIST (ICS 203)

1. Incident Name:		2. Operational Period: DAY/NIGHT SHIFT	
BOLT CREEK		Date/Time From: 10/09/2022 0700	Date/Time To: 10/10/2022 0659 MON
3. Incident Commander(s) and Command Staff:		MEDICAL UNIT	CHLOE READ 253-569-2933 (T)
IC/UC	LEONARD JOHNSON 360-581-9672	7. Operations Section:	
INFORMATION OFFICER	BENJAMIN SHEARER 509-492-1461 AMANDA MONTHEI (VIRTUAL)	OPS SECTION CHIEF	RYAN NICHOLLS 509-430-1606
LIAISON OFFICER	TIM MCKERN (VIRTUAL) DAN SMITH (T) (VIRTUAL)	PLANNING OPS	DAN STUCKI 801-860-7865 LINDSEY KUPFER (T)
SAFETY OFFICER	RYAN CLOUD 509-528-6196		
4. Agency/Organization Representative(s):		DIVISION/GROUP	A KEN JOHNSON 509-496-5452
Agency/Organization	Name	DIVISION/GROUP	S BENJAMIN J LIPPERT 509-675-6362
DNR- NW REGION ADMIN	JAY S GUTHRIE LAURIE BERGVALL (ACT)	DIVISION/GROUP	STRUCTURE ROBERT MOORE 509-366-8777
DNR - NW REGION REP	SHANNON N CLARK	DIVISION/GROUP	NIGHT FRANK DAHLQUIST 425-359-3055
USFS MSF / AA	JEFF MARSZAL BRYAN MCNEIL (ACT)	7b. Air Operations Branch:	
WA STATE PATROL	LT. DEION GLOVER	AIR OPS BRANCH DIRECTOR	
BNSF	RYAN KUBO	AIR ATTACK SUPERVISOR	
SNOHOMISH CO DEM	JARROD DIBBLE	AIR SUPPORT SUPERVISOR	
KING CO DEM	ALYSHA KAPLAN	8. Finance/Administration Section:	
SNOHOMISH CO SHERIFF	LT. MIKE MARTIN	CHIEF	PAULA JAMES 808-298-1386
KING CO SHERIFF	CAPT. PETER HORVATH	PTRC	JANET MCINTOSH
SKY VALLEY FD #26	CHIEF ERIC ANDREWS	TIME UNIT	JEANNE CHRISTENSEN
SKYKOMISH FD #50	CHIEF JAMES KNISLEY		
USFS LEAD READ	MATT KENNEY		
5. Planning Section:			
CHIEF	RYAN W SCHARNHORST 509-432-1016 PATRICK K REID 509-537-6343 (T)		
SCKN/DEMOB	JULIA EVERTA 707-683-6782		
GIS SPECIALIST	JASON EMSLEY (T) MICHAEL PENA (T)		
TECHNOLOGY SUPPORT SPECIALIST			
INCIDENT METEOROLOGIST	LISA KRIEDERMAN 240-778-5298		
SITUATION UNIT	DAVID WINTER		
6. Logistics Section:			
CHIEF	CINDY PRESTON 509-607-9724		
DEPUTY	JOSH AMBROSE 360-310-0401 MICHAEL HENDRICKS 509-948-0441		
GROUND SUPPORT UNIT	KEVIN SELL		
COMMUNICATIONS UNIT	JEFF MINER		
BASE CAMP MGR	CODY TOPPING		
EQUIPMENT	CAMERON ESKEBERY		
9. Prepared By:		Position/Title:	Signature:
ICS 203	Name: PATRICK REID	PSC3	
IAP Page	Date/Time: 10/07/2022 2336		



INCIDENT Weather Forecast



FORECAST NO: 22
PREDICTION FOR: 0700 - 0700
SHIFT DATE: Sunday, October 9, 2022
FORECAST ISSUED: 1700 PDT Oct 9, 2022

NAME OF FIRE: Bolt Creek
UNIT: WA-NDC
SIGNED: *Lisa Kriederman*
Incident Meteorologist

WEATHER DISCUSSION: Ridging aloft will bring one more warm and dry day, with light easterly downslope/downvalley winds in the morning, transitioning to a light westerly diurnal wind across the incident this afternoon. Temperatures will continue to approach record highs in the lower to mid-80s, while humidity drops down into the 25-40% range. A weather system will bring increasing west winds Monday along with cooler temperatures and higher humidity, with a 50% of light rain Monday night.

WEATHER FORECAST:

WEATHER: Sunny, with high clouds moving in late. Areas of smoke.

TEMPERATURES: 68 to 75 ridges and upper slopes; 79 to 84 lower slopes and valleys.

HUMIDITY: 26 to 38 percent.

20 FT WINDS:

RIDGETOP - East 3 to 6 mph with gusts to 9 mph, becoming West 3 to 7 mph with gusts to 10 mph in the afternoon.

SLOPE/VALLEY - East 3 to 5 mph becoming West 3 to 6 mph with gusts to 8 mph in the afternoon.

HAINES INDEX: 5 (Moderate)

STABILITY/INVERSION: Inversion lifting between 1100 and 1300 hrs.

OUTLOOK FOR TONIGHT: Partly cloudy. Areas of smoke. Low temperatures in the 50s to lower-60s. Maximum humidity 65 to 80 percent, lowest on mid-slopes and ridges. East wind 1 to 4 mph on lower slopes and valleys, west-northwest winds increasing over the ridges, 4 to 7 mph with gusts to 12 mph by sunrise.

OUTLOOK FOR MONDAY:

WEATHER: Mostly cloudy. A 50% chance of light rain after 1700.

TEMPERATURES: 60 to 64 ridges and upper slopes; 70 to 76 lower slopes and valleys.

HUMIDITY: 40 to 50 percent.

20 FT WINDS:

RIDGETOP - West-northwest 4 to 7 mph with gusts to 12 mph in the morning, increasing to 8 to 12 mph with gusts to 22 mph in the afternoon.

SLOPE/VALLEY - Variable winds less than 3 mph until 0900, becoming West-northwest 7 to 10 mph with gusts to 18 mph in the afternoon.

HAINES INDEX: 4 (Low)

STABILITY/INVERSION: Inversion lifting between 1000 and 1300 hrs.

EXTRA INFORMATION:

Sunrise: 0715

Sunset: 1830

IAP

Bolt Creek

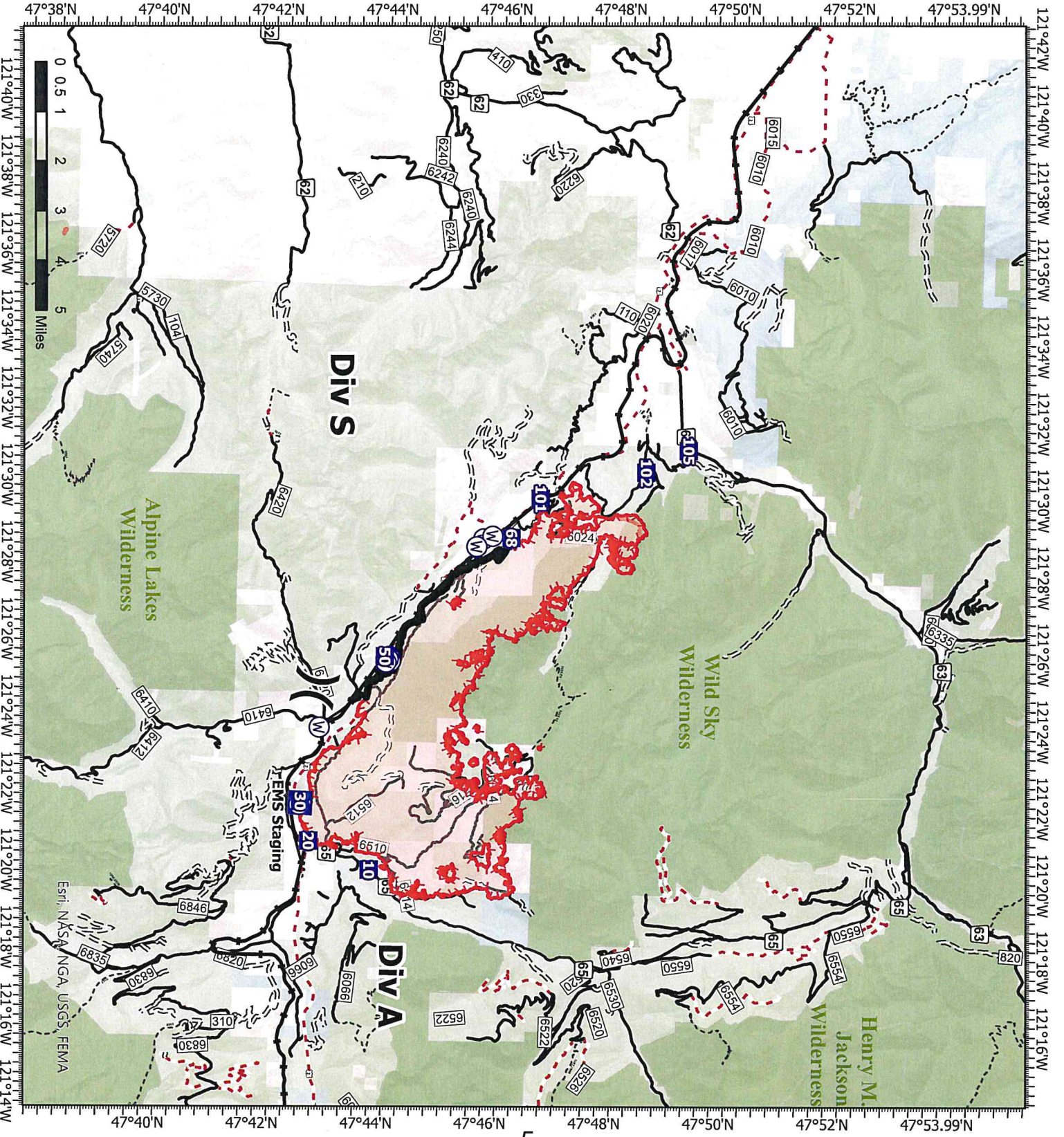
WA-NWS-000150
10/08/2022

13,060 acres at 10/8/2022

- ⌘ Division Break
- ⊕ Medical
- Ⓧ Drop Point
- ⊕ Water Source
- ⬛ Contained
- ⬛ Uncountained
- 🏠 Bureau of Land Management (BLM)
- 🇺🇸 State
- 🌲 US Forest Service (USFS)
- ⬛ Private
- ⬛ Undetermined
- 🚂 Railroads
- Open Roads
- == Closed Roads
- - - Decommissioned Roads
- ⋯ Decommissioned Roads
- ⋯ Trail
- 🌲 Wilderness



Map updated:
10/8/2022 1602



Division/Group Assignment List (ICS 204 WF)
Controlled Unclassified Information//Basic

1. Incident Name:			3.			
BOLT CREEK			Branch:		Division/Group	
2. Operational Period:			DAY/NIGHT SHIFT			
Date/Time From: 10/09/2022 0700		Date/Time To: 10/10/2022 0659		A		
SUN		MON				
4. Operations Personnel						
OPERATIONS CHIEF		RYAN NICHOLLS 509-430-1606		PLANNING OPS		DAN STUCKI 801-860-7865
FIELD OPS				DIVISION/GROUP SUPERVISOR		KENNETH JOHNSON 509-496-5452
5. Resources Assigned this Period						
Strike Team / Task Force / Resource Designator		LWD	Leader	Number Persons	Drop Off PT./Time	Pick Up PT./Time
O-193 TFL JOTHAN MCGAUGHEY 360-595-3801		10/13		1	ICP/0700	ICP/1900
O-185 STEN ETRINGER (T) *** 360-319-2775		10/14		1	ICP/0700	ICP/1900
E-167 ENG5 WA-NWS 5202 ***		10/13	ISAAC DUGGER	4	ICP/0700	ICP/1900
E-168 ENG5 WA-OLS 1201		10/13	FELIPE BARRAGAN	4	ICP/0700	ICP/1900
E-169 ENG5 WA-NWS 5101		10/13	DOUGLAS LANNING	4	ICP/0700	ICP/1900
E-170 ENG5 WA-PCS 2300		10/13	GRANT EASTHAM	3	ICP/0700	ICP/1900
E-171 ENG5 WA-NES 7412 ***		10/13	CORBIN EDMONSON	4	ICP/0700	ICP/1900
E-143 WAT4 T195 SKYKOMISH FIRE		10/13	ROB CAMPBELL	1	ICP/0700	ICP/1900
O-224 STEN BRIAN WILLIAM WESEMANN		10/22		1		
E-130 ENG LATE SUMMERS WILDFIRE		10/12	NOLAN ETENHOFER	3	ICP/0700	ICP/1900
E-131 ENG MEADOW WILDFIRE		10/12	DAMIEN RAMON	3	ICP/0700	ICP/1900
E-133 ENG RAINIER WILDFIRE		10/12	BRICYN ABDUL	3	ICP/0700	ICP/1900
E-134 ENG NORTHRIDGE WILDFIRE		10/12	BRADLEY BECK	3	ICP/0700	ICP/1900
E-135 ENG RAINIER WILDFIRE		10/12	MIKE SUTTON	3	ICP/0700	ICP/1900
O-177 FMOD RAINSTORM 509-899-5432		10/11	TOMMY PRATT	2	ICP/0700	ICP/1900
O-145 SOFR ANDY MURRIN 541-784-7774		10/13		1	ICP/0700	ICP/1900
8. Division/Group Communication Summary						
Function	Channel	RX Frequency N/W	RX Tone/NAC	TX Frequency N/W	TX Tone/NAC	Mode
TACTICAL	1	151.3100	118.8	151.3100	118.8	A
COMMAND	7	159.4125	118.8	151.4450	118.8	A
COMMAND	8	159.3750	118.8	151.3250	118.8	A
AIR TO GROUND	12	159.2700	103.5	159.2700	103.5	A
AIR TO GROUND	13	151.2875	103.5	151.2875	103.5	A
AIR GUARD	16	168.6250	000.0	168.6250	110.9	A
9. Prepared By (Resource Unit Leader)		Approved By (Planning Section Chief)			Date	Time
PATRICK REID		RYAN SCHARNHORST			10/08/2022	1751

Division/Group Assignment List (ICS 204 WF)
Controlled Unclassified Information//Basic

1. Incident Name:			3.			
BOLT CREEK			Branch:		Division/Group	
2. Operational Period: DAY/NIGHT SHIFT					A	
Date/Time From: 10/09/2022 0700	SUN	Date/Time To: 10/10/2022 0659	MON			
4. Operations Personnel						
OPERATIONS CHIEF		RYAN NICHOLLS 509-430-1606		PLANNING OPS		DAN STUCKI 801-860-7865
FIELD OPS				DIVISION/GROUP SUPERVISOR		KENNETH JOHNSON 509-496-5452
5. Resources Assigned this Period						
Strike Team / Task Force / Resource Designator		LWD	Leader	Number Persons	Drop Off PT./Time	Pick Up PT./Time
O-222 EMPF REMINGTON BECKER 360-903-8612		10/20		1	ICP/0700	ICP/1900
O-127.18 EMTF JASON LUKER 425-350-3377		10/12		1	ICP/0700	ICP/1900
O-183 EMTF JOSHUA BOE 360-912-3764		10/09		1	ICP/0700	ICP/1300
6. Control Operations/Work Assignments:						
<ul style="list-style-type: none"> • Structure and infrastructure protection. • Prevent fire from crossing Highway 2 to the south. • Patrol primary control lines. • Provide point protection around structures. • Assess opportunities along the 6510 road to clean up the unburned island. 						
7. Special Instructions:						
<p>*** Maintain Initial Attack (IA) availability.</p> <ul style="list-style-type: none"> • Assess suppression repair needs in field maps. • Text hourly weather observations to IMET at 240-778-5298. • Helicopter 346 is available between divisions when able to fly. Comms on Air to Ground, Channel 13. • Special Instructions for Highway: In the event of trees or debris falling on the highway and interrupting traffic notify WSDOT. • Block the road way using fire apparatus and try to mitigate the hazard if possible. 						
8. Division/Group Communication Summary						
Function	Channel	RX Frequency N/W	RX Tone/NAC	TX Frequency N/W	TX Tone/NAC	Mode
TACTICAL	1	151.3100	118.8	151.3100	118.8	A
COMMAND	7	159.4125	118.8	151.4450	118.8	A
COMMAND	8	159.3750	118.8	151.3250	118.8	A
AIR TO GROUND	12	159.2700	103.5	159.2700	103.5	A
AIR TO GROUND	13	151.2875	103.5	151.2875	103.5	A
AIR GUARD	16	168.6250	000.0	168.6250	110.9	A
9. Prepared By (Resource Unit Leader)		Approved By (Planning Section Chief)			Date	Time
PATRICK REID		RYAN SCHARNHORST			10/08/2022	1751

Division/Group Assignment List (ICS 204 WF)
Controlled Unclassified Information//Basic

1. Incident Name:			3.			
BOLT CREEK			Branch:		Division/Group	
2. Operational Period:			DAY/NIGHT SHIFT			
Date/Time From: 10/09/2022 0700		SUN	Date/Time To: 10/10/2022 0659		MON	
			S			
4. Operations Personnel						
OPERATIONS CHIEF		RYAN NICHOLLS 509-430-1606		PLANNING OPS		DAN STUCKI 801-860-7865
FIELD OPS				DIVISION/GROUP SUPERVISOR		BENJAMIN J LIPPERT 509-675-6362
5. Resources Assigned this Period						
Strike Team / Task Force / Resource Designator		LWD	Leader	Number Persons	Drop Off PT./Time	Pick Up PT./Time
O-206.19 TFLD MICHAEL JAMES NICK		10/19		1		
O-225 TFLD SHAWN ONGERS (T)		10/15		1		
C-17 CR2I MT BAKER IA		10/18	ERIK USHER	20	ICP/0700	ICP/1900
C-18 CR21 NORTH PACIFIC FORESTRY INC		10/23		20	ICP/0700	ICP/1900
O-217 FELB DAVID WESTCOTT		10/09		1	ICP/0700	ICP/1900
O-219 FELB(T) DANIEL OAKLAND		10/18		1	ICP/0700	ICP/1900
O-211 FMOD DBA BAILEY LOGGING		10/18	BEN A NEWMAN	2	ICP/0700	ICP/1900
O-194 FMOD - MOUNTAIN WEST		10/14	MATT HOLZNAGEL	2	ICP/0700	ICP/1900
E-149 DOZ2 BURGESS LOGGING		10/10	BUZZ CREIGHTON	2	ICP/0700	ICP/1900
E-150 CHP2 BROTHERS FIRE		10/19	SHANE MUSTARD	3	ICP/0700	ICP/1900
O-165 STEN GREG SEALS *** 360-480-9485		10/14		1	ICP/0700	ICP/1900
E-139 ENG5 BLACKSTONE FORESTRY		10/20	CASEY FOX	3	ICP/0700	ICP/1900
E-138 ENG4 CHEWACK WILDFIRE INC		10/08	ANDREW GRAVES	3	ICP/0700	ICP/1900
E-137 ENG3 BAILEY ENTERPRISES, L.L.C.		10/08	GREG BAILEY	3	ICP/0700	ICP/1900
E-136 ENG6 LIBERTY WILDFIRE		10/13	CLIFF MIDDLETON	3	ICP/0700	ICP/1900
E-174 WTS2 SNOHOMISH FD26		10/14	ERNIE WALTERS	1	ICP/0700	ICP/1900
E-176 ENG5 OSPREY WILDFIRE, LLC		10/20	DUSTYN WILLIAMS	3	ICP/0700	ICP/1900
8. Division/Group Communication Summary						
Function	Channel	RX Frequency N/W	RX Tone/NAC	TX Frequency N/W	TX Tone/NAC	Mode
TACTICAL	2	151.3400	118.8	151.3400	118.8	A
COMMAND	7	159.4125	118.8	151.4450	118.8	A
COMMAND	8	159.3750	118.8	151.3250	118.8	A
AIR TO GROUND	12	159.2700	103.5	159.2700	103.5	A
AIR TO GROUND	13	151.2875	103.5	151.2875	103.5	A
AIR GUARD	16	168.6250	000.0	168.6250	110.9	A
9. Prepared By (Resource Unit Leader)			Approved By (Planning Section Chief)		Date	Time
PATRICK REID			RYAN SCHARNHORST		10/08/2022	1751

Division/Group Assignment List (ICS 204 WF)
Controlled Unclassified Information//Basic

1. Incident Name:			3.			
BOLT CREEK			Branch:		Division/Group	
2. Operational Period:			DAY/NIGHT SHIFT			
Date/Time From: 10/09/2022 0700		SUN	Date/Time To: 10/10/2022 0659		MON	
			S			
4. Operations Personnel						
OPERATIONS CHIEF		RYAN NICHOLLS 509-430-1606		PLANNING OPS		DAN STUCKI 801-860-7865
FIELD OPS				DIVISION/GROUP SUPERVISOR		BENJAMIN J LIPPERT 509-675-6362
5. Resources Assigned this Period						
Strike Team / Task Force / Resource Designator		LWD	Leader	Number Persons	Drop Off PT./Time	Pick Up PT./Time
O-155 EMPF ANGELA THORSVOLD 541-588-2314		10/13		1	ICP/0700	ICP/1900
O-172 EMTB CHRISTY FIELD 541-399-6943		10/18		1	ICP/0700	ICP/1900
E-185 AMB2 "AMBO 2" 360-620-6558		10/25	TREVOR STANELY	2	ICP/0700	ICP/1900
6. Control Operations/Work Assignments:						
<ul style="list-style-type: none"> • Structure and infrastructure protection. • Prevent fire from crossing Highway 2 to the west. • Patrol primary control lines. • Provide point protection around structures 						
7. Special Instructions:						
<p>*** Maintain Initial Attack (IA) availability.</p> <ul style="list-style-type: none"> • Ambulance (E-185), AMB, is staged at Money Creek. • Text hourly weather observations to IMET at 240-778-5298. • Assess suppression repair needs in field maps • Develop alternative options for fire activity near DP100 • Chipping 6022 Road • Improve spur 120 off of 6022 Road • Continue suppression repair • Helicopter 346 is available between divisions if able to fly. Comms on Air to Ground Channel 13 • Reassess current indirect line placement for effectiveness. • Special Instructions for the Highway: In the event of trees or debris falling on the highway and interrupting traffic notify WSDOT. Block the road lane using fire apparatus and try to mitigate the hazard if possible. 						
8. Division/Group Communication Summary						
Function	Channel	RX Frequency N/W	RX Tone/NAC	TX Frequency N/W	TX Tone/NAC	Mode
TACTICAL	2	151.3400	118.8	151.3400	118.8	A
COMMAND	7	159.4125	118.8	151.4450	118.8	A
COMMAND	8	159.3750	118.8	151.3250	118.8	A
AIR TO GROUND	12	159.2700	103.5	159.2700	103.5	A
AIR TO GROUND	13	151.2875	103.5	151.2875	103.5	A
AIR GUARD	16	168.6250	000.0	168.6250	110.9	A
9. Prepared By (Resource Unit Leader)			Approved By (Planning Section Chief)		Date	Time
PATRICK REID			RYAN SCHARNHORST		10/08/2022	1751

Division/Group Assignment List (ICS 204 WF)
Controlled Unclassified Information//Basic

1. Incident Name:		3.				
BOLT CREEK		Branch:		Division/Group		
2. Operational Period:		DAY/NIGHT SHIFT				
Date/Time From: 10/09/2022 0700 SUN		Date/Time To: 10/10/2022 0659 MON		STRUCTURE		
4. Operations Personnel						
OPERATIONS CHIEF		RYAN NICHOLLS 509-430-1606		DIVISION/GROUP SUPERVISOR		ROBERT MOORE 509-366-8777
PLANNING OPS		DAN STUCKI 801-860-7865				
5. Resources Assigned this Period						
Strike Team / Task Force / Resource Designator		LWD	Leader	Number Persons	Drop Off PT./Time	Pick Up PT./Time
O-197 TFLD ADAM KENNETH JONES (T) 509-683-2092		10/16		1	ICP/0700	ICP/1900
E-177 ENG5		10/24	KATHLEEN CALVIN	3	ICP/0700	ICP/1900
E-175 ENG5 ENG5 - E8142 - WA-SPS		10/21	REECE JOHNSON	3	ICP/0700	ICP/1900
E-183 ENG5 - LL MEADOW WILDFIRE INC 206-556-9942		10/21	WESLEY JAMES	3	ICP/0700	ICP/1900
E-179 CHP2		10/24	ANDY GIBBS	2	ICP/0700	ICP/1900
E-184 WTS2		10/24	JAY FISHER	1	ICP/0700	ICP/1900
E-180 ENG5 (ENG1205) WA-OLS		10/23	REGGIE BUATTNOR 360-670-7320	3	ICP/0700	ICP/1900
E-182 ENG5 METHOW RIVER WILD		10/23	JOHN NEUNEKOR 509-409-1485	3	ICP/0700	ICP/1900
6. Control Operations/Work Assignments:						
<ul style="list-style-type: none"> • Inventory and create a structure protection plan for residences west of 6022 Road. • Maintain current protection along the Hwy 2 corridor. • Patrol for spot fires. • Support firing operations around structures in Division S. 						
7. Special Instructions:						
<ul style="list-style-type: none"> • Maintain awareness for construction traffic along 63 Road. • Establish Drop Point(s) based upon needs. • Protection implementation at Haybrook Lookout as needed. 						
8. Division/Group Communication Summary						
Function	Channel	RX Frequency N/W	RX Tone/NAC	TX Frequency N/W	TX Tone/NAC	Mode
TACTICAL	3	151.2125	118.8	151.2125	118.8	A
COMMAND	7	159.4125	118.8	151.4450	118.8	A
COMMAND	8	159.3750	118.8	151.3250	118.8	A
AIR TO GROUND	12	159.2700	103.5	159.2700	103.5	A
AIR TO GROUND	13	151.2875	103.5	151.2875	103.5	A
AIR GUARD	16	168.6250	000.0	168.6250	110.9	A
9. Prepared By (Resource Unit Leader)			Approved By (Planning Section Chief)		Date	Time
PATRICK REID			RYAN SCHARNHORST		10/08/2022	1751

Division/Group Assignment List (ICS 204 WF)
Controlled Unclassified Information//Basic

1. Incident Name:			3.			
BOLT CREEK			Branch:		Division/Group	
2. Operational Period:			DAY/NIGHT SHIFT			
Date/Time From: 10/09/2022 0700 SUN		Date/Time To: 10/10/2022 0659 MON		NIGHT SHIFT		
4. Operations Personnel						
OPERATIONS CHIEF RYAN NICHOLLS 509-430-1606		PLANNING OPS DAN STUCKI 801-860-7865				
5. Resources Assigned this Period						
Strike Team / Task Force / Resource Designator		LWD	Leader	Number Persons	Drop Off PT./Time	Pick Up PT./Time
O-168 STEN FRANK DAHLQUIST		10/14	425-359-3055	1	ICP/1900	ICP/0700
E-140 ENG5 SCFD #15 BR60		10/13	BRANDON JONES	2	ICP/1900	ICP/0700
E-141 ENG5 SCFD #22 BR68		10/11	CHAD LEE	2	ICP/1900	ICP/0700
E-163 ENG5 WA-SES 4303		10/11	GAVIN BRUMLEY 509-899-7497	4	ICP/1900	ICP/0700
E-181 ENG5 WA-OLS		10/22	BLAKE MANN 360-640-3650	4	ICP/1900	ICP/1900
E-178 AMB2 'AMBO1' 360-219-7608		10/19	JOSHUA CHISNELL	2	ICP/1900	ICP/0700
6. Control Operations/Work Assignments:						
<ul style="list-style-type: none"> • Structure and infrastructure protection. • Prevent fire from crossing Highway 2 to the south and west. • Patrol primary control lines. • Provide point protection around structures 						
7. Special Instructions:						
<ul style="list-style-type: none"> • Use 911 Dispatch if the fire threatens structures. In addition, call Planning Ops Dan Stucki at (801) 860-7865 						
8. Division/Group Communication Summary						
Function	Channel	RX Frequency N/W	RX Tone/NAC	TX Frequency N/W	TX Tone/NAC	Mode
TACTICAL	1	151.3100	118.8	151.3100	118.8	A
COMMAND	7	159.4125	118.8	151.4450	118.8	A
COMMAND	8	159.3750	118.8	151.3250	118.8	A
AIR TO GROUND	12	159.2700	103.5	159.2700	103.5	A
AIR TO GROUND	13	151.2875	103.5	151.2875	103.5	A
AIR GUARD	16	168.6250	000.0	168.6250	110.9	A
9. Prepared By (Resource Unit Leader)			Approved By (Planning Section Chief)		Date	Time
PATRICK REID			RYAN SCHARNHORST		10/08/2022	1751

Division/Group Assignment List (ICS 204 WF)
Controlled Unclassified Information//Basic

1. Incident Name:			3.			
BOLT CREEK			Branch:		Division/Group	
2. Operational Period: DAY/NIGHT SHIFT			65 ROAD CLOSURE			
Date/Time From: 10/09/2022 0700 SUN		Date/Time To: 10/10/2022 0659 MON				
4. Operations Personnel						
OPERATIONS CHIEF		RYAN NICHOLLS 814-360-4391		DIVISION SUPERVISOR		MATT KENNEY 814-360-4391
BRANCH DIRECTOR				AIR ATTACK SUPERVISOR		
5. Resources Assigned this Period						
Strike Team / Task Force / Resource Designator		LWD	Leader	Number Persons	Drop Off PT./Time	Pick Up PT./Time
ROAD SECURITY (GUARD)		10/22	SARAH LARSEN 978-944-5433	1	/0600	/2200
ROAD SECURITY (GUARD)		10/22	AVERY PAYNE 334-559-07578	1	/0600	/2200
ROAD SECURITY (GUARD)		10/22	FRANK ROSCIGNO 919-357-8550	1	/0600	/2200
6. Control Operations/Work Assignments:						
<ul style="list-style-type: none"> • USFS Police will provide security to the 65 road closure. • Assist fire resources working in the area with access to 						
7. Special Instructions:						
When working in the 65 Road area and if you need access or have traffic issues contact the Forest Services Guard for assistance.						
8. Division/Group Communication Summary						
Function	Channel	RX Frequency N/W	RX Tone/NAC	TX Frequency N/W	TX Tone/NAC	Mode
COMMAND	7	159.3100	151.3100	118.8	118.8	A
TACTICAL	1	151.3100	118.8	151.3100	118.8	
9. Prepared By (Resource Unit Leader)			Approved By (Planning Section Chief)		Date	Time
PATRICK REID			RYAN SCHARNHORST		10/08/2022	0000

INCIDENT RADIO COMMUNICATIONS PLAN (ICS 205)

Controlled Unclassified Information//Basic

1. Incident Name: BOLT CREEK	2. Date/Time Prepared: Date: 10/07/2022 Time: 2336	3. Operational Period: Date/Time From: 10/09/2022 0700 Date/Time To: 10/10/2022 0659 SUN MON	DAY/NIGHT SHIFT
--	---	--	------------------------

4. Basic Radio Channel Use:										
Zone Group	Ch #	Function	Channel Name/Trunked Radio System Talkgroup	Assignment	RX Freq	RX Tone/NAC	TX Freq	TX Tone/NAC	Mode (A,D, or M)	Remarks
	1	TACTICAL	TAC 1	DIV A	151.3100	118.8	151.3100	118.8	A	
	2	TACTICAL	TAC 2	DIV S	151.3400	118.8	151.3400	118.8	A	
	3	TACTICAL	TAC 3	STRUCTURE GROUP	151.2125	118.8	151.2125	118.8	A	
	4	TACTICAL	DNR COM	UNASSIGNED	151.4150	103.5	151.4150	103.5	A	IA USE ONLY
	5	TACTICAL	REDNET	UNASSIGNED	153.8300	000.0	153.8300	000.0	A	IA USE ONLY
	6	TACTICAL	FS FTAC	UNASSIGNED	168.5625	000.0	168.5625	000.0	A	IA USE ONLY
	7	COMMAND	CMD 7	ALL DIVS	159.4125	118.8	151.4450	118.8	A	LOCATED NORTH OF INDEX LINKED TO CMD 8
	8	COMMAND	CMD 8	ALL DIVS	159.3750	118.8	151.3250	118.8	A	LOCATED ON SOBIESKI LINKED TO CMD 7
	9	COMMAND	SNOHOMIS	FOREST NET	159.4350	141.3	151.1900	141.3	A	DISPATCH CALL SIGN "NW"
	10	COMMAND	SULTAN	FOREST NET	159.2475	141.3	151.1825	141.3	A	DISPATCH "IA USE ONLY"
	11	COMMAND	SOBIESKI	FOREST NET	169.5750	146.2	164.9625	156.7	A	DISPATCH CALL SIGN "PUGET SOUND" IA USE ONLY
	12	AIR TO GROUND	DNR AVG1	ALL DIVS	159.2700	103.5	159.2700	103.5	A	PRIMARY AVG
	13	AIR TO GROUND	DNR AVG2	ALL DIVS	151.2875	103.5	151.2875	103.5	A	SECONDARY AVG
	14	AIR TO GROUND	AVG 41	UNASSIGNED	167.4750	000.0	167.4750	000.0	A	
	15	AIR TO GROUND	VMED 29	MEDEVAC	155.3475	156.7	155.3475	156.7	A	MEDEVAC
	16	AIR GUARD	AIRGUARD	EMERGENCY USE	168.6250	000.0	168.6250	110.9	A	EMERGENCY USE

5. Special Instructions:

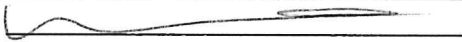
6. Prepared By (Communications Unit Leader)	Name: JEFF MINER
ICS 205	IAP Page
	Signature: <i>Jeff Miner</i>
	Date/Time: 10/07/2022 2336

1. Incident Name: BOLT CREEK
ICP – Evergreen State Fairgrounds

2. Operational Period: Date: 10/09/22 - 10/10/22
From: 0700-0700

3. Basic Local Communications Information:

Name	Incident Assigned Position	Cell Phone Number / Email Address
Communications Unit		360-259-7651
Finance Section		360-481-7668
Information Officer		360-259-5006
Medical Unit		360-259-6737
Ordering Unit		360-481-0718
Planning Section		360-481-5153
Safety Officer		360-259-9535

4. Prepared by: Name: Ryan Scharnhorst Position/Title: PSC3 Signature: 

--	--



Bolt Creek Safety Message

October 9, 2022



Hazard Trees - Snags and fire-weakened green trees will continue to present a hazard on the incident. Factors to consider when assessing for hazard trees:

- Trees have been burning for an extended period
- High risk tree species (rot and shallow root system)
- Dead or broken tops and limbs overhead
- Accumulation of down limbs
- Leaning or hung-up trees

To mitigate hazard trees:

- Identify the kill zone and inform others. (Flag, describe or post lookouts to keep others out).
- Consider wind and weather. Any increase in wind or change in wind direction means danger, stay alert!
- Remain alert to noise or movement - it could signal immediate danger. Face your danger to decide to escape.

The basic mitigation to remember - Look Up, Look Down, Look Around

Driving - Lights and seat belts on anytime the vehicle is moving, walk around the vehicle before backing, ask someone to be a backup guide if available, keep speeds down and drive defensively.

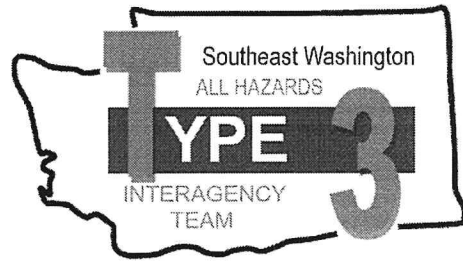
There will be a VERY HEAVY traffic loading on HWY 2!!! Use extra caution when driving.....

Ensure LCES is in place for all operations - Don't assume they are. Daily briefings and confirmation are essential and required.

Limit your exposure time when traveling!!!

Always take care of people who are trying to make you look good and make it as easy as possible for them to do so!

Code of Conduct Incident Personnel



Each individual on this incident is responsible for:

- ☞ Being *ready and able* to perform their assigned duties effectively.
- ☞ Conducting themselves in a manner that treats people with dignity, equality, courtesy, and respect.
- ☞ Abiding by agency ethics and conduct regulations.
- ☞ Reporting any harassment or other inappropriate behavior.

Each individual of this incident has the right to:

- ☞ Work in an environment characterized by safe work practices.
- ☞ Work in a fair and harassment free environment.
- ☞ Say "No" to unwelcome advances or requests for favors.
- ☞ File complaints or grievances through appropriate avenues.

There is zero tolerance for inappropriate behavior while assigned to the incident, including:

- ☞ Illegal drug use
- ☞ Alcohol use
- ☞ Unsafe work practices and activities
- ☞ Discrimination
- ☞ Sexual harassment
- ☞ Fighting, threatening, and abusive behaviors
- ☞ Using social media and electronic communication devices for personal business while engaged in fire assignment duties.
- ☞ Other violations of Fire Service, Washington DNR, and Federal agency standards of conduct.

Failure to adhere to the Code of Conduct could result in dismissal from the incident, with notification to your home unit.

The public expects our best efforts; they see us as professionals in what we say and do. Let's continue to show them we are!

DNR/DOC Camp Crew Guidelines	1. Incident Name	2. Date Prepared	3. Time Prepared
-------------------------------------	------------------	------------------	------------------

ALL PERSONNEL WORKING AROUND OFFENDERS/DNR KITCHENS

This message is from the Department of Natural Resources and Department of Corrections.

- ▶ No person shall be allowed to carry firearms in the area where offenders are working. It is acceptable to secure weapons in vehicles while entering into the working vicinity of offenders.
- ▶ Do not give or take anything from an offender. Offenders are identified by red ball caps or red hard hats.
- ▶ Do NOT take photos or interview offenders without approval from the DNR Inmate Liaison.
- ▶ Do not do any favors for offenders. (Examples: passing on a message, giving tobacco, asking for change, mailing a letter, using a phone. The most innocent act/favor can have consequences that could affect an offender for years.)
- ▶ Report any suspicious act to the Supervisor, DOC Staff or Inmate Liaison.
- ▶ Offenders are not allowed to use tobacco products. Do not use tobacco products in or around kitchen area.
- ▶ Offenders on DNR Crews have committed various crimes. They ARE considered minimum level custody.
- ▶ Treat Offenders with respect, but don't get personal. Practices the correctional distance...don't get personal. Offenders generally feel good with being part of the fire suppression effort; treat them with the same respect and dignity as other fire fighters but, DON'T GET PERSONAL.
- ▶ Offenders are trained in their job assignments and their work ethics. They are held accountable for their job performance and their behavior.
- ▶ Acknowledge crews for a job well done; offenders do good work and appreciate the recognition.
- ▶ Offenders need good professional role models as part of their rehabilitation process. Consider their presence and set good examples by the context of your conversation and choice of language used.

9. Prepared by (Name and Position)

MEDICAL PLAN (ICS 206 WF)

1. Incident/Project Name				2. Operational Period			
Bolt Creek				Date/Time: 10/09/2022-10/10/2022			
3. Ambulance Services							
Name	Complete Address	Phone		Advanced Life Support (ALS)			
				YES	NO		
Sky Valley Fire #54	42013 State HWY 2-Gold Bar	911		X			
Sultan Fire #51	32905 Cascade View Dr	911			X		
Skykomish FD #50	105 E Old Cascade HWY	911			X		
4. Air Ambulance Services							
Name	Phone		Type of Aircraft & Capability				
Airlift Northwest	911 (800-426-2430)		Rotor				
Life Flight	911 (800-232-0911)		Rotor				
5. Hospitals							
Name Complete Address	Degrees Decimal Minutes	Travel Time From ICP Air Ground		Phone	Helipad Yes No		Level of Care Facility
Evergreen Health Monroe 14701 179 th Ave SE Monroe, WA	Lat: N/A	N/A	5 MIN	425-877-9371		X	Level 4
	Long: N/A						
Providence Medical Center 1321 Colby Ave Everett, WA	Lat: 47° 59' 58.5" N	10 MIN	25 MIN	425-404-5601	X		Level 2
	Long: 122° 12' 21.5" W						
Harborview Medical 325 9 th Ave Seattle, WA	Lat: 47° 36' 10.8" N	15 MIN	60 MIN	206-744-3000	X		Level 1 Trauma Burn Center
	Long: 122° 19' 29.6" W						
DIVISIONS							
ICP	EMS Responders:			Chloe Read-MEDL(t)/COVID Liaison W-360-259-6737. C-253-569-2933			
DIV A	EMS Responders & Capabilities:			Medic-Remington Becker / EMT-Jason Luker			
	Medical Emergency Channel:			Command			
	Air:			15 Minutes			
	Ground:			65 Minutes			
	Approved Heli Spot:			Skykomish Airport			
	Lat:			47° 42' 38" N			
	Long:			121° 20' 25" W			
DIV S	EMS Responders & Capabilities:			AMBO 2-Trevor Stanley / Medic-Angela Thorsvold / EMTF-Christy Field			
	Medical Emergency Channel:			Command			
	Air:			15 Minutes			
	Ground:			50 Minutes			
	Approved Heli Spot:			H-63 (Big Field)	H-67 (Parking Lot)	H-30 (Station 54)	
	Lat:			47° 49' 05" N	47° 49' 07" N	47° 50' 31" N	
	Long:			121° 34' 01" W	121° 33' 13" W	121° 40' 06" W	
STRUCTURE							
NOT STAFFED WITH MEDICAL PERSONNEL							
NIGHT SHIFT	EMS Responders & Capabilities:			AMBO 1-Josh Chisnell			
	Medical Emergency Channel:			Command			
	Approved Heli Spot DIV A			Skykomish Airport			
	Lat:			47° 42' 38" N			
	Long:			121° 20' 25" W			
	Approved Heli Spot DIV S			H-63 (Big Field)	H-67 (Parking Lot)	H-30 (Station 54)	
	Lat:			47° 49' 05" N	47° 49' 07" N	47° 50' 31" N	
Long:			121° 34' 01" W	121° 33' 13" W	121° 40' 06" W		
Prepared by (Medical Unit Leader)		Date:		Reviewed By (Safety Officer)		Date:	
Chloe Read MEDL(t) <i>Chloe Read</i>		10/8/22		Ryan Cloud SOFR <i>[Signature]</i>		10-22-2022	
In case of emergency (Green, Yellow or Red), establish an IC for the IWT, follow your medical incident report and contact communications on command. Establish your PACE (Primary, Alternative, Contingency, Emergency) model for medical emergency extraction.							

MEDICAL PLAN (ICS 206 WF)

Controlled Unclassified Information//Basic

Medical Incident Report																													
<p>FOR A NON-EMERGENCY INCIDENT, WORK THROUGH CHAIN OF COMMAND TO REPORT AND TRANSPORT INJURED PERSONNEL AS NECESSARY.</p> <p>FOR A MEDICAL EMERGENCY: IDENTIFY ON SCENE INCIDENT COMMANDER BY NAME AND POSITION AND ANNOUNCE "MEDICAL EMERGENCY" TO INITIATE RESPONSE FROM IMT COMMUNICATIONS/DISPATCH.</p>																													
<p>Use the following items to communicate situation to communications/dispatch.</p>																													
<p>1. CONTACT COMMUNICATIONS / DISPATCH (Verify correct frequency prior to starting report) <i>Ex: "Communications, Div. Alpha. Stand-by for Emergency Traffic."</i></p> <p>2. INCIDENT STATUS: Provide incident summary (including number of patients) and command structure. <i>Ex: "Communications, I have a Red priority patient, unconscious, struck by a falling tree. Requesting air ambulance to Forest Road 1 at (Lat./Long.) This will be the Trout Meadow Medical, IC is TFLD Jones. EMT Smith is providing medical care."</i></p>																													
Severity of Emergency / Transport Priority	<input type="checkbox"/> RED / PRIORITY 1 Life or limb threatening injury or illness. Evacuation need is IMMEDIATE <i>Ex: Unconscious, difficulty breathing, bleeding severely, 2nd – 3rd burns more than 4 palm sizes, heat stroke, disoriented.</i> <input type="checkbox"/> YELLOW / PRIORITY 2 Serious Injury or illness. Evacuation may be DELAYED if necessary. <i>Ex: Significant trauma, unable to walk, 2nd – 3rd burns not more than 1-3 palm sizes</i> <input type="checkbox"/> GREEN / PRIORITY 3 Minor Injury or illness. Non-Emergency transport <i>Ex: Sprains, strains, minor heat-related illness.</i>																												
Nature of Injury or Illness & Mechanism of Injury			<i>Brief Summary of Injury or Illness (Ex: Unconscious, Struck by Falling Tree)</i>																										
Transport Request			<i>Air Ambulance / Short Haul/Hoist Ground Ambulance / Other</i>																										
Patient Location			<i>Descriptive Location & Lat. / Long. (WGS84)</i>																										
Incident Name			<i>Geographic Name + "Medical" (Ex: Trout Meadow Medical)</i>																										
On-Scene Incident Commander			<i>Name of on-scene IC of Incident within an incident (Ex: TFLD Jones)</i>																										
Patient Care			<i>Name of Care Provider (Ex: EMT Smith)</i>																										
<p>3. INITIAL PATIENT ASSESSMENT: Complete this section for each patient as applicable (start with the most severe patient)</p> <p>Patient Assessment: See IRPG page 106</p> <p>Treatment:</p>																													
<p>4. TRANSPORT PLAN:</p> <p>Evacuation Location (if different): (Descriptive Location (drop point, intersection, etc.) or Lat. / Long.) Patient's ETA to Evacuation Location:</p> <p>Helispot / Extraction Site Size and Hazards:</p>																													
<p>5. ADDITIONAL RESOURCES / EQUIPMENT NEEDS:</p> <p><i>Example: Paramedic/EMT, Crews, Immobilization Devices, AED, Oxygen, Trauma Bag, IV/Fluid(s), Splints, Rope rescue, Wheeled litter, HAZMAT, Extrication</i></p>																													
<p>6. COMMUNICATIONS: Identify State Air/Ground EMS Frequencies and Hospital Contacts as applicable</p> <table border="1" style="width: 100%; border-collapse: collapse;"> <thead> <tr> <th style="width: 10%;">Function</th> <th style="width: 20%;">Channel Name/Number</th> <th style="width: 15%;">Receive (RX)</th> <th style="width: 15%;">Tone/NAC *</th> <th style="width: 15%;">Transmit (TX)</th> <th style="width: 25%;">Tone/NAC *</th> </tr> </thead> <tbody> <tr> <td>COMMAND</td> <td></td> <td></td> <td></td> <td></td> <td></td> </tr> <tr> <td>AIR-TO-GRND</td> <td></td> <td></td> <td></td> <td></td> <td></td> </tr> <tr> <td>TACTICAL</td> <td></td> <td></td> <td></td> <td></td> <td></td> </tr> </tbody> </table>						Function	Channel Name/Number	Receive (RX)	Tone/NAC *	Transmit (TX)	Tone/NAC *	COMMAND						AIR-TO-GRND						TACTICAL					
Function	Channel Name/Number	Receive (RX)	Tone/NAC *	Transmit (TX)	Tone/NAC *																								
COMMAND																													
AIR-TO-GRND																													
TACTICAL																													
<p>7. CONTINGENCY: Considerations: If primary options fail, what actions can be implemented in conjunction with primary evacuation method? Be thinking ahead.</p>																													
<p>8. ADDITIONAL INFORMATION: Updates/Changes, etc.</p>																													
<p>REMEMBER: Confirm ETA's of resources ordered. Act according to your level of training. Be Alert. Keep Calm. Think Clearly. Act Decisively.</p>																													