

SEWA Team 2



Incident Action Plan

Monday – Columbus Day

BOLT CREEK

WA-NWS-150

PN P14322 (1522)

FMAG 221-HPS

OPERATION PERIOD



October 10, 2022, 07:00

to


October 11, 2022, 07:00



INCIDENT OBJECTIVES (ICS 202)

1. Incident Name:		2. Operational Period: DAY/NIGHT SHIFT	
BOLT CREEK		Date/Time From: 10/10/2022 0700 MON	Date/Time To: 10/11/2022 0659 TUE
3. Objective(s):			
Management Objectives			
<ul style="list-style-type: none"> • Provide for firefighter and public safety using ongoing risk analysis and reasonable mitigation of identified hazards. • Minimize impacts to communities and infrastructure, and minimize acres burned on private lands along Highway 2 corridor. • Maintain and enhance relationships with cooperators, stakeholders, landowners, and communities. • Provide accurate and timely information to the public. • Protect tribal, cultural, aquatic, and wildlife resources and sensitive plant sites by coordinating with Resource Advisors. • Treat each other with dignity and respect and act professionally on the fire and in the community. • Manage costs commensurate with values at risk and update Agency Administrators daily. 			
Control Objectives			
<ul style="list-style-type: none"> • Maintain the fire north of Highway 2 utilizing the existing suppression strategy to stop the fire spread to at-risk values. • To control fire, utilize complete suppression and point protection strategies in areas around structures and values. • Keep fire east of Index-Galena Road (FR63) and west of Beckler Creek Road (FR65). • Continue to monitor the fire in the wilderness, only taking action to maintain a fire within the identified east/west parameters. 			
4. Operational Period Command Emphasis:			
<ul style="list-style-type: none"> • Provide a positive presence to the community and the public impacted by the fire. • Continually use a deliberate analysis of risk as you engage the fire, the safety of personnel is the highest priority. Maintain a good plan within your crews and work areas that provide access to line medical personnel and egress, as necessary. • Be aware of values at risk inside and adjacent to the fire perimeter. Engage and suppress fire when safe and employ appropriate tactics for the situation. 			
General Situational Awareness:			
See attached Fire Weather.			
Expect increased traffic on Hwy 2. Use spotters and additional lookouts. Avoid placing personnel or equipment on the roadway unless necessary.			
5. Site Safety Plan Required? Yes <input type="checkbox"/> No <input checked="" type="checkbox"/>			
Approved Site Safety Plan(s) Located		SEE ATTACHED SAFETY MESSAGE	
6. Incident Action Plan (the items checked below are included in this Incident Action Plan):			
<input checked="" type="checkbox"/> ICS 202	<input type="checkbox"/> ICS 207	Other Attachments:	
<input checked="" type="checkbox"/> ICS 203	<input type="checkbox"/> ICS 208	<input checked="" type="checkbox"/> SAFETY	
<input checked="" type="checkbox"/> ICS 204	<input type="checkbox"/> ICS 220	<input checked="" type="checkbox"/> INFORMATION MESSAGE	
<input checked="" type="checkbox"/> ICS 205	<input checked="" type="checkbox"/> Map/Chart	<input checked="" type="checkbox"/> ICS 214 - UNIT LOG	
<input checked="" type="checkbox"/> ICS 205A	<input checked="" type="checkbox"/> Weather Forecast/Tides/Currents	<input checked="" type="checkbox"/> CODE OF CONDUCT	
<input checked="" type="checkbox"/> ICS 206			
7. Prepared by: RYAN SCHARNHORST		Position/Title: PSC3	Signature: 
8. Approved by Incident Commander:		Name: LEONARD JOHNSON	Signature: 
ICS 202		IAP Page	Date/Time: 2010 / 10 / 9 / 2022

ORGANIZATION ASSIGNMENT LIST (ICS 203)

1. Incident Name:		2. Operational Period: DAY/NIGHT SHIFT	
BOLT CREEK		Date/Time From: 10/10/2022 0700	Date/Time To: 10/11/2022 0659 TUE
3. Incident Commander(s) and Command Staff:		EQUIPMENT	CAMERON ESKEBERG
IC/UC	LEONARD JOHNSON 360-581-9672	MEDICAL UNIT	CHLOE READ 253-569-2933 (T)
INFORMATION OFFICER	KAREN SARGEANT 509-885-0067 DONALD FERGUSON 541-778-2679	CAMP SECURITY	JAMES GREEN 360-519-9932 (DAY) CHAD RIGGN (NIGHT)
INFORMATION OFFICER	JOSIE WILLIAMS(V) 425-647-1872	7. Operations Section:	
LIAISON OFFICER	TIM MCKERN (VIRTUAL) DAN SMITH (T) (VIRTUAL)	OPS SECTION CHIEF	RYAN NICHOLLS 509-430-1606
SAFETY OFFICER	RYAN CLOUD 509-528-6196	PLANNING OPS	WES LONG 360-281-9585 DAN STUCKI 801-860-7865
4. Agency/Organization Representative(s):			
Agency/Organization	Name	DIVISION/GROUP	
DNR- NW REGION ADMIN	JAY S GUTHRIE LAURIE BERGVALL (ACT)	A	KEN JOHNSON 509-496-5452
DNR - NW REGION REP	SHANNON N CLARK	S	BENJAMIN J LIPPERT 509-675-6362
USFS MSF / AA	JEFF MARSZAL BRYAN MCNEIL (ACT)	STRUCTURE	AARON BIBE
WA STATE PATROL	LT. DEION GLOVER	NIGHT	DALE HEIDAL 360-402-9494
BNSF	RYAN KUBO	65 ROAD CLOSURE	BRIAN MCNEIL 425-365-6067
SNOHOMISH CO DEM	JARROD DIBBLE	7b. Air Operations Branch:	
KING CO DEM	ALYSHA KAPLAN	AIR OPS BRANCH DIRECTOR	
SNOHOMISH CO SHERIFF	LT. MIKE MARTIN	AIR ATTACK SUPERVISOR	
KING CO SHERIFF	CAPT. PETER HORVATH	AIR SUPPORT SUPERVISOR	
SKY VALLEY FD #26	CHIEF ERIC ANDREWS	8. Finance/Administration Section:	
SKYKOMISH FD #50	CHIEF JAMES KNISLEY	CHIEF	PAULA JAMES 808-298-1386
USFS LEAD READ	MATT KENNEY	PTRC	JANET MCINTOSH
5. Planning Section:		TIME UNIT	JEANNE CHRISTENSEN
CHIEF	RYAN W SCHARNHORST 509-432-1016 PATRICK K REID 509-537-6343 (T)		
SCKN/DEMOB	JULIA EVERTA 707-683-6782		
TECHNOLOGY SUPPORT SPECIALIST			
INCIDENT METEOROLOGIST	LISA KRIEDERMAN 240-778-5298		
SITUATION UNIT	DAVID WINTER		
FIRE BEHAVIOR ANALYST	STEVE ZIEL 541-890-6862		
6. Logistics Section:			
CHIEF	CINDY PRESTON 509-607-9724		
DEPUTY	JOSH AMBROSE 360-310-0401 MICHAEL HENDRICKS 509-948-0441		
GROUND SUPPORT UNIT	KEVIN SELL		
COMMUNICATIONS UNIT	JEFF MINER		
BASE CAMP MGR	CODY TOPPING		
9. Prepared By:	Name: PATRICK REID	Position/Title: PSC3	Signature: 
ICS 203	IAP Page	Date/Time: 10/08/2022 2350	



INCIDENT Weather Forecast



FORECAST NO: 23
PREDICTION FOR: 0700 - 0700
SHIFT DATE: Monday, October 10, 2022
FORECAST ISSUED: 1700 PDT Oct 9, 2022

NAME OF FIRE: Bolt Creek
UNIT: WA-NDC
SIGNED: *Lisa Kriederman*
Incident Meteorologist

WEATHER DISCUSSION: An approaching weather system will be increase west winds to break the inversion earlier, and increasing clouds to limit heating. Gusts of 20 to 25 mph are expected near the frontal passage, anticipated to sweep through late afternoon. Scattered light showers will move over the area into the evening, bringing little accumulation. Tuesday will be a cool day with calming winds and clearing skies.

WEATHER FORECAST:

WEATHER: Increasing clouds through the day, lowering in the afternoon. Areas of smoke in the morning, clearing in the afternoon. A few light rain showers after 1600.

MAX TEMPERATURES: 60 to 65 ridges and upper slopes; 69 to 74 lower slopes and valleys.

MIN HUMIDITY: 48 to 55 percent.

20 FT WINDS:

RIDGETOP - West-northwest 4 to 7 mph with gusts to 12 mph in the morning, increasing to 8 to 12 mph with gusts to 22 mph in the afternoon.

SLOPE/VALLEY - Variable winds less than 3 mph until 0900, becoming West-northwest 7 to 10 mph with gusts to 12 to 18 mph in the afternoon (strongest along Highway 2).

HAINES INDEX: 4 (Low)

INVERSION: Lifting between 0900 and 1100 hrs.

OUTLOOK FOR TONIGHT: Cloudy. Scattered light rain showers, mainly before 2200. Accumulation less than 0.10". Low temperatures in the upper 40s to lower 50s. Maximum humidity 85 to 95 percent. West-northwest wind 7 to 10 mph with gusts to 12 mph, decreasing to 3 to 5 mph after midnight.

OUTLOOK FOR TUESDAY:

WEATHER: Mostly cloudy in the morning, then clearing.

TEMPERATURES: 60 to 64 ridges and upper slopes; 68 to 72 lower slopes and valleys.

HUMIDITY: 40 to 50 percent.

20 FT WINDS:

RIDGETOP - Northwest 3 to 5 mph, with gusts to 10 mph in the afternoon.

SLOPE/VALLEY - Variable less than 3 mph in the morning, becoming West-northwest East 3 to 5 mph becoming West 2 to 4 mph with gusts to 7 mph in the afternoon.

HAINES INDEX: 3 (Very Low)

INVERSION: Weak, lifting between 1000 and 1200 hrs.

EXTRA INFORMATION:

Sunrise: 0717

Sunset: 1826

Fire Behavior Forecast # 05

Name of Incident: Bolt Creek	Administrative Unit: WA-NWS
Date & Time Issued: October 9, 2022 @ 1900	Operational Period: DAY/NIGHT 10/10-11/2022 (0700-0700)
FBAN: Steve Ziel	Signed: /z/ <i>[Signature]</i>

Assumptions: ... *Slightly cooler, with increased relative humidity, and a cloudy sky by the afternoon will likely moderate fire behavior potential. We have the ingredients for moderate-to-active fire behavior characteristics due to dry fuels, heavy fuel loading, and late season conditions. Expect the most favorable burning conditions between 1400-1800. Persistent burning conditions may be expected in heavy fuels and concentrations. Lower slopes/river areas remain sheltered, smokey, with higher RH & night time recovery. Monitor increasing W-NW wind for increase in fire behavior – wind/slope alignment on ridges and drainages.*

Weather Summary

*See attached Fire Weather Forecast

Fire Behavior Summary

Fuels in the fire area are primarily composed of *Timber Litter*, and *Timber with Understory*. Primary tree species include mixed sizes of Douglas Fir, Western Hemlock, with scattered True Fir and cedar. Local timber litter is compact to fluffy. Shrub and understory species include alder, elder, maple, and dog-hair conifer thickets. Large snags and heavy fuel loadings are common throughout all areas. Live woody fuels are marginally contributing to and rates of spread and fire intensity. Fuel conditions change by elevation, and aspect. Low crown base height (ladder fuels) and lichen/moss are present in most of the timbered areas. *Lots of maple leaf litter.*

Today's potential fire behavior will generally consist of "smoldering and creeping" – but may include pockets of low-to-moderate surface fire spread with isolated flare ups and torching. Primary spread mechanism is backing on steep slopes, accelerated by rollout. Wind/slope alignment on upper slopes and along drainages may contribute to surface fire spread. Areas of backing fire and flanking (lateral) spread may increase in the afternoon with forecast winds, and a little sunshine. Fire activity into the evening will likely diminish with increased humidity and less wind.

* **Fine fuel moisture= 8%-11%, 1000hr. moisture=12%, Woody fuels 190%, Probability of Ignition-20-40%**

Fuel Type	Rate of Spread	Flame Length	Spotting Distance	20 MPH Gusts FPM
...If your work area includes -	(CH/HR = FPM)	Feet		
Timber Litter (TL5) Heavy	2-3	1-2		2-4
Timber w/ Understory (TU5) Heavy	3-4	4-5		5-6
Timber w/ Understory (TU2) Moderate	4-5	2-3		5-7

Specific Assignments:

- Div. A – Monitor fire activity on slopes for flare-ups, rollout and backing rate on lower slopes. Should be sheltered from NW winds.
- Div. S – Expect some drainage/wind alignment with developing westerly winds. Expect some smoldering to kindle to flames with wind

Air Operations: Visibility will be impacted by smoke under a cloudy afternoon sky. River valley may be somewhat very smokey.

Safety

Isolated flare-up are possible in areas that have not shown activity for a couple days. Snags may fall into fresh fuel. Winds may kindle smoldering fuels to flame.....(review Common Denominators of Fire Behavior on Tragedy Fires.

Subtle changes in the weather pattern todayWatchout Situation #15 – Wind increases and/or changes direction. #4 – Unfamiliar with weather and local factors influencing fire behavior.

*Today's Fire Behavior Forecast contains 518 words written for your situational awareness.

IAP

Bolt Creek

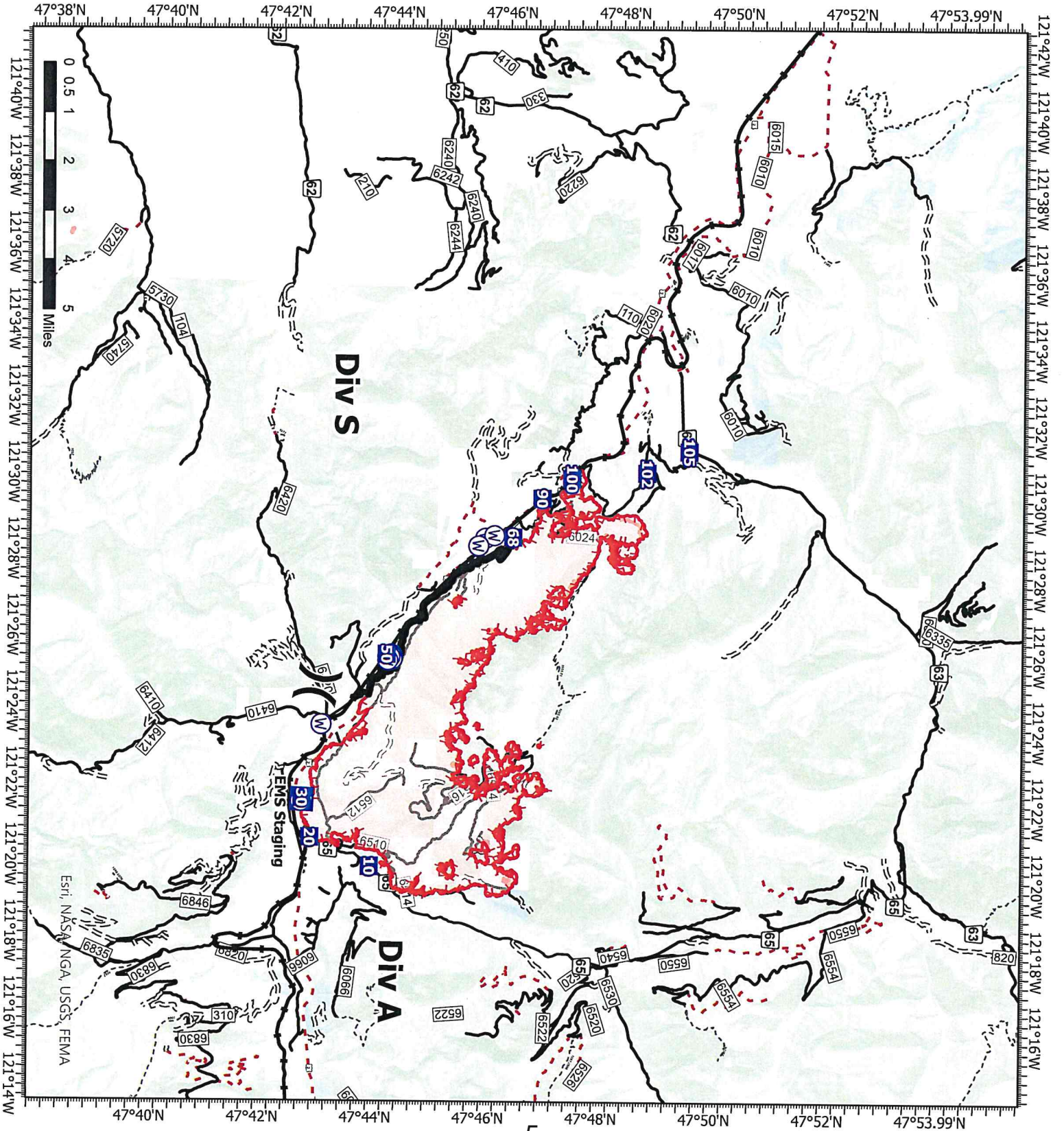
WA-NWS-000150
10/10/2022

13,291 acres at 10/10/2022

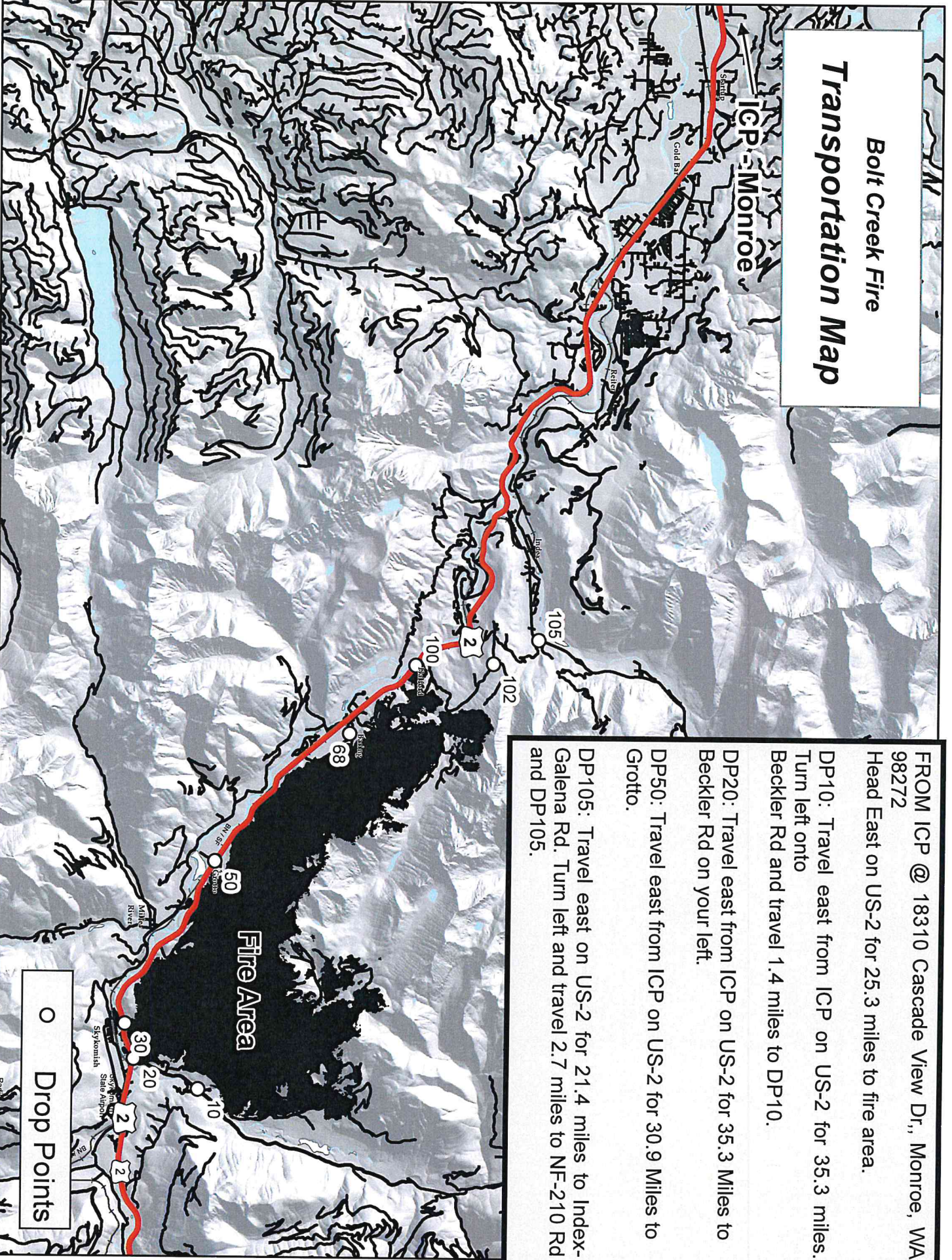
- X Division Break
- ⊕ Medical
- Ⓧ Drop Point
- Ⓢ Water Source
- Ⓢ Contained
- Ⓢ Uncontained
- Ⓢ Bureau of Land Management (BLM)
- Ⓢ State
- Ⓢ US Forest Service (USFS)
- Ⓢ Private
- Ⓢ Undetermined
- Ⓢ Railroads
- Ⓢ Open Roads
- Ⓢ Closed Roads
- Ⓢ Decommissioned Roads
- Ⓢ Decommissioned Roads
- Ⓢ Trail



Map updated:
10/9/2022 11:25



Bolt Creek Fire Transportation Map



FROM ICP @ 18310 Cascade View Dr., Monroe, WA 98272
Head East on US-2 for 25.3 miles to fire area.

DP10: Travel east from ICP on US-2 for 35.3 miles. Turn left onto Becker Rd and travel 1.4 miles to DP10.


DP20: Travel east from ICP on US-2 for 35.3 Miles to Becker Rd on your left.

DP50: Travel east from ICP on US-2 for 30.9 Miles to Grotto.

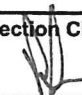
DP105: Travel east on US-2 for 21.4 miles to Index-Galena Rd. Turn left and travel 2.7 miles to NF-210 Rd and DP105.

○ Drop Points

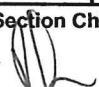
Division/Group Assignment List (ICS 204 WF)
Controlled Unclassified Information//Basic

1. Incident Name:				3.			
BOLT CREEK				Branch:		Division/Group	
2. Operational Period: DAY/NIGHT SHIFT						A	
Date/Time From: 10/10/2022 0700 MON		Date/Time To: 10/11/2022 0659 TUE					
4. Operations Personnel							
OPERATIONS CHIEF		RYAN NICHOLLS 509-430-1606		PLANNING OPS		DAN STUCKI 801-860-7865 WES LONG 360-281-9585	
FIELD OPS				DIVISION/GROUP SUPERVISOR		KENNETH JOHNSON 509-496-5452	
5. Resources Assigned this Period							
Strike Team / Task Force / Resource Designator		LWD	Leader	Number Persons	Drop Off PT./Time	Pick Up PT./Time	
O-193 TFL JOTHAN MCGAUGHEY 360-595-3801		10/13		1	ICP/0700	ICP/1900	
O-185 STEN ETRINGER (T) *** 360-319-2775		10/14		1	ICP/0700	ICP/1900	
E-167 ENG5 WA-NWS 5202 ***		10/13	ISAAC DUGGER	4	ICP/0700	ICP/1900	
E-168 ENG5 WA-OLS 1201		10/13	FELIPE BARRAGAN	4	ICP/0700	ICP/1900	
E-169 ENG5 WA-NWS 5101		10/13	DOUGLAS LANNING	4	ICP/0700	ICP/1900	
E-170 ENG5 WA-PCS 2300		10/13	GRANT EASTHAM	3	ICP/0700	ICP/1900	
E-143 WAT4 T195 SKYKOMISH FIRE		10/13	ROB CAMPBELL	1	ICP/0700	ICP/1900	
O-224 STEN BRIAN WESEMANN360-749-6218		10/22		1	ICP/0700	ICP/1900	
E-130 ENG LATE SUMMERS WILDFIRE		10/12	NOLAN ETTENHOFER	3	ICP/0700	ICP/1900	
E-131 ENG MEADOW WILDFIRE		10/12	DAMIEN RAMON	3	ICP/0700	ICP/1900	
E-133 ENG RAINIER WILDFIRE		10/12	BRICYN ABDUL	3	ICP/0700	ICP/1900	
E-134 ENG NORTHRIDGE WILDFIRE		10/12	BRADLEY BECK	3	ICP/0700	ICP/1900	
E-135 ENG RAINIER WILDFIRE		10/12	MIKE SUTTON	3	ICP/0700	ICP/1900	
O-177 FMOD RAINSTORM 509-899-5432		10/11	TOMMY PRATT	2	ICP/0700	ICP/1900	
O-145 SOFR ANDY MURRIN 541-784-7774		10/13		1	ICP/0700	ICP/1900	
O-222 EMPF REMINGTON BECKER 360-903-8612		10/20		1	ICP/0700	ICP/1900	
8. Division/Group Communication Summary							
Function	Channel	RX Frequency N/W	RX Tone/NAC	TX Frequency N/W	TX Tone/NAC	Mode	
TACTICAL	1	151.3100	118.8	151.3100	118.8	A	
COMMAND	7	159.4125	118.8	151.4450	118.8	A	
COMMAND	8	159.3750	118.8	151.3250	118.8	A	
AIR TO GROUND	12	159.2700	103.5	159.2700	103.5	A	
AIR TO GROUND	13	151.2875	103.5	151.2875	103.5	A	
AIR GUARD	16	168.6250	000.0	168.6250	110.9	A	
9. Prepared By (Resource Unit Leader)			Approved By (Planning Section Chief)			Date	Time
PATRICK REID			RYAN SCHARNHORST 			10/09/2022	1900


Division/Group Assignment List (ICS 204 WF)
Controlled Unclassified Information//Basic

1. Incident Name:			3.			
BOLT CREEK			Branch:		Division/Group	
2. Operational Period: DAY/NIGHT SHIFT					A	
Date/Time From: 10/10/2022 0700	MON	Date/Time To: 10/11/2022 0659	TUE			
4. Operations Personnel						
OPERATIONS CHIEF		RYAN NICHOLLS 509-430-1606		PLANNING OPS		DAN STUCKI 801-860-7865 WES LONG 360-281-9585
FIELD OPS				DIVISION/GROUP SUPERVISOR		KENNETH JOHNSON 509-496-5452
5. Resources Assigned this Period						
Strike Team / Task Force / Resource Designator		LWD	Leader	Number Persons	Drop Off PT./Time	Pick Up PT./Time
O-127.18 EMTF JASON LUKER 425-350-3377		10/12		1	ICP/0700	ICP/1900
6. Control Operations/Work Assignments:						
<ul style="list-style-type: none"> • Prevent fire from crossing Highway 2 to the south. • Patrol primary control lines. • Provide point protection around structures. • Assess opportunities along 6510 Road to clean up the unburned island. 						
7. Special Instructions:						
<p>*** Maintain Initial Attack (IA) availability.</p> <ul style="list-style-type: none"> • Assess suppression repair needs in field maps. • Text hourly weather observations to IMET at 240-778-5298. • Helicopter 346 is available between divisions when able to fly. Comms on Air to Ground, Channel 13. • Special Instructions for Highway: In the event of trees or debris falling on the highway and interrupting traffic notify WSDOT. • Block the road way using fire apparatus and try to mitigate the hazard if possible. 						
8. Division/Group Communication Summary						
Function	Channel	RX Frequency N/W	RX Tone/NAC	TX Frequency N/W	TX Tone/NAC	Mode
TACTICAL	1	151.3100	118.8	151.3100	118.8	A
COMMAND	7	159.4125	118.8	151.4450	118.8	A
COMMAND	8	159.3750	118.8	151.3250	118.8	A
AIR TO GROUND	12	159.2700	103.5	159.2700	103.5	A
AIR TO GROUND	13	151.2875	103.5	151.2875	103.5	A
AIR GUARD	16	168.6250	000.0	168.6250	110.9	A
9. Prepared By (Resource Unit Leader)			Approved By (Planning Section Chief)		Date	Time
PATRICK REID			RYAN SCHARNHORST 		10/09/2022	1900

Division/Group Assignment List (ICS 204 WF)
Controlled Unclassified Information//Basic

1. Incident Name:			3.			
BOLT CREEK			Branch:		Division/Group	
2. Operational Period: DAY/NIGHT SHIFT					S	
Date/Time From: 10/10/2022 0700 MON		Date/Time To: 10/11/2022 0659 TUE				
4. Operations Personnel						
OPERATIONS CHIEF RYAN NICHOLLS 509-430-1606		PLANNING OPS DAN STUCKI 801-860-7865 WES LONG 360-281-9585				
FIELD OPS		DIVISION/GROUP SUPERVISOR BENJAMIN J LIPPERT 509-675-6362				
5. Resources Assigned this Period						
Strike Team / Task Force / Resource Designator	LWD	Leader	Number Persons	Drop Off PT./Time	Pick Up PT./Time	
O-206.19 TFLD MICHAEL NICK509-563-9188	10/19		1			
O-225 TFLD SHAWN ONGERS (T)509-386-3900	10/15		1			
C-17 CR21 MT BAKER IA	10/18	ERIK USHER	20	ICP/0700	ICP/1900	
C-18 CR21 NORTH PACIFIC FORESTRY INC	10/23		20	ICP/0700	ICP/1900	
C-19 GRAYBACK FORESTRY INC 458-212-0414			20	ICP/0700	ICP/1900	
O-219 FELB(T) DANIEL OAKLAND	10/18		1	ICP/0700	ICP/1900	
O-211 FMOD DBA BAILEY LOGGING	10/18	BEN A NEWMAN	2	ICP/0700	ICP/1900	
O-194 FMOD - MOUNTAIN WEST	10/14	MATT HOLZNAGEL	2	ICP/0700	ICP/1900	
E-149 DOZ2 BURGESS LOGGING	10/10	BUZZ CREIGHTON	2	ICP/0700	ICP/1300	
E-150 CHP2 BROTHERS FIRE	10/19	SHANE MUSTARD	3	ICP/0700	ICP/1900	
O-165 STEN GREG SEALS *** 360-480-9485	10/14		1	ICP/0700	ICP/1900	
E-139 ENG5 BLACKSTONE FORESTRY	10/20	CASEY FOX	3	ICP/0700	ICP/1900	
E-138 ENG4 CHEWACK WILDFIRE INC	10/15	ANDREW GRAVES	3	ICP/0700	ICP/1900	
E-137 ENG3 BAILEY ENTERPRISES, L.L.C.	10/13	GREG BAILEY	3	ICP/0700	ICP/1900	
E-136 ENG6 LIBERTY WILDFIRE	10/13	CLIFF MIDDLETON	3	ICP/0700	ICP/1900	
E-174 WTS2 SNOHOMISH FD26	10/14	ERNIE WALTERS	1	ICP/0700	ICP/1900	
E-176 ENG5 OSPREY WILDFIRE, LLC	10/20	DUSTYN WILLIAMS	3	ICP/0700	ICP/1900	
8. Division/Group Communication Summary						
Function	Channel	RX Frequency N/W	RX Tone/NAC	TX Frequency N/W	TX Tone/NAC	Mode
TACTICAL	2	151.3400	118.8	151.3400	118.8	A
COMMAND	7	159.4125	118.8	151.4450	118.8	A
COMMAND	8	159.3750	118.8	151.3250	118.8	A
AIR TO GROUND	12	159.2700	103.5	159.2700	103.5	A
AIR TO GROUND	13	151.2875	103.5	151.2875	103.5	A
AIR GUARD	16	168.6250	000.0	168.6250	110.9	A
9. Prepared By (Resource Unit Leader)		Approved By (Planning Section Chief)		Date	Time	
PATRICK REID		RYAN SCHARNHORST 		10/09/2022	1900	


Division/Group Assignment List (ICS 204 WF)
Controlled Unclassified Information//Basic

1. Incident Name:			3.			
BOLT CREEK			Branch:		Division/Group	
2. Operational Period:			DAY/NIGHT SHIFT			
Date/Time From: 10/10/2022 0700		MON	Date/Time To: 10/11/2022 0659		TUE	
			S			
4. Operations Personnel						
OPERATIONS CHIEF		RYAN NICHOLLS 509-430-1606		PLANNING OPS		DAN STUCKI 801-860-7865 WES LONG 360-281-9585
FIELD OPS				DIVISION/GROUP SUPERVISOR		BENJAMIN J LIPPERT 509-675-6362
5. Resources Assigned this Period						
Strike Team / Task Force / Resource Designator		LWD	Leader	Number Persons	Drop Off PT./Time	Pick Up PT./Time
O-155 EMPF ANGEL THORSVOLD 541-588-2314		10/14		1	ICP/0700	ICP/1900
O-172 EMTB CHRISTY FIELD 541-399-6943		10/18		1	ICP/0700	ICP/1900
E-185 AMB2 "AMBO 2" 360-620-6558		10/25	TREVOR STANELY	2	ICP/0700	ICP/1900
6. Control Operations/Work Assignments:						
<ul style="list-style-type: none"> • Structure and infrastructure protection. • Prevent fire from crossing Highway 2 to the west. • Patrol primary control lines. • Provide point protection around structures 						
7. Special Instructions:						
<p>*** Maintain Initial Attack (IA) availability.</p> <ul style="list-style-type: none"> • Ambulance (E-185), AMB, is staged at Money Creek. • Text hourly weather observations to IMET at 240-778-5298. • Assess suppression repair needs in field maps • Develop alternative options for fire activity near DP100 • Chipping 6022 Road • Improve spur 120 off of 6022 Road • Continue suppression repair • Helicopter 346 is available between divisions if able to fly. Comms on Air to Ground Channel 13 • Reassess current indirect line placement for effectiveness. • Special Instructions for the Highway: In the event of trees or debris falling on the highway and interrupting traffic notify WSDOT. Block the road lane using fire apparatus and try to mitigate the hazard if possible. 						
8. Division/Group Communication Summary						
Function	Channel	RX Frequency N/W	RX Tone/NAC	TX Frequency N/W	TX Tone/NAC	Mode
TACTICAL	2	151.3400	118.8	151.3400	118.8	A
COMMAND	7	159.4125	118.8	151.4450	118.8	A
COMMAND	8	159.3750	118.8	151.3250	118.8	A
AIR TO GROUND	12	159.2700	103.5	159.2700	103.5	A
AIR TO GROUND	13	151.2875	103.5	151.2875	103.5	A
AIR GUARD	16	168.6250	000.0	168.6250	110.9	A
9. Prepared By (Resource Unit Leader)			Approved By (Planning Section Chief)		Date	Time
PATRICK REID			RYAN SCHARNHORST 		10/09/2022	1900

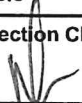
Division/Group Assignment List (ICS 204 WF)
Controlled Unclassified Information//Basic

1. Incident Name:			3.			
BOLT CREEK			Branch:		Division/Group	
2. Operational Period:			DAY/NIGHT SHIFT			
Date/Time From: 10/10/2022 0700		MON	Date/Time To: 10/11/2022 0659		TUE	STRUCTURE
4. Operations Personnel						
OPERATIONS CHIEF		RYAN NICHOLLS 509-430-1606		DIVISION/GROUP SUPERVISOR		AARON BIBE
PLANNING OPS		DAN STUCKI 801-860-7865 WES LONG 360-281-9585				
5. Resources Assigned this Period						
Strike Team / Task Force / Resource Designator		LWD	Leader	Number Persons	Drop Off PT./Time	Pick Up PT./Time
O-197 TFLD ADAM KENNETH JONES (T) 509-683-2092		10/16		1	ICP/0700	ICP/1900
E-177 ENG5		10/24	KATHLEEN CALVIN	3	ICP/0700	ICP/1900
E-175 ENG5 - E8142 - WA-SPS		10/21	REECE JOHNSON	3	ICP/0700	ICP/1900
E-183 ENG5 - LL MEADOW WILDFIRE INC 206-556-9942		10/21	WESLEY JAMES	3	ICP/0700	ICP/1900
E-179 CHP2		10/24	ANDY GIBBS	2	ICP/0700	ICP/1900
E-184 WTS2		10/24	JAY FISHER	1	ICP/0700	ICP/1900
E-180 ENG5 (ENG1205) WA-OLS		10/23	REGGIE BUATTNOR 360-670-7320	3	ICP/0700	ICP/1900
E-182 ENG5 METHOW RIVER WILD		10/23	JOHN NEUNEKOR 509-409-1485	3	ICP/0700	ICP/1900
6. Control Operations/Work Assignments:						
<ul style="list-style-type: none"> • Maintain current protection along the Hwy 2 corridor. • Patrol for spot fires. • Support firing operations around structures in Division S. 						
7. Special Instructions:						
<ul style="list-style-type: none"> • Maintain awareness for construction traffic along 63 Road. • Establish Drop Point(s) based upon needs. • Protection implementation at Haybrook Lookout as needed. 						
8. Division/Group Communication Summary						
Function	Channel	RX Frequency N/W	RX Tone/NAC	TX Frequency N/W	TX Tone/NAC	Mode
TACTICAL	3	151.2125	118.8	151.2125	118.8	A
COMMAND	7	159.4125	118.8	151.4450	118.8	A
COMMAND	8	159.3750	118.8	151.3250	118.8	A
AIR TO GROUND	12	159.2700	103.5	159.2700	103.5	A
AIR TO GROUND	13	151.2875	103.5	151.2875	103.5	A
AIR GUARD	16	168.6250	000.0	168.6250	110.9	A
9. Prepared By (Resource Unit Leader)			Approved By (Planning Section Chief)		Date	Time
PATRICK REID			RYAN SCHARNHORST		10/09/2022	1900

Division/Group Assignment List (ICS 204 WF)
Controlled Unclassified Information//Basic

1. Incident Name:			3.			
BOLT CREEK			Branch:		Division/Group	
2. Operational Period: DAY/NIGHT SHIFT			NIGHT SHIFT			
Date/Time From: 10/10/2022 0700 MON		Date/Time To: 10/11/2022 0659 TUE				
4. Operations Personnel						
OPERATIONS CHIEF		RYAN NICHOLLS 509-430-1606		PLANNING OPS		WES LONG 360-281-9585 DAN STUCKI 801-860-7865
DIVISION/GROUP SUPERVISOR		DEL HEIDAL 360-402-9494				
5. Resources Assigned this Period						
Strike Team / Task Force / Resource Designator		LWD	Leader	Number Persons	Drop Off PT./Time	Pick Up PT./Time
O-168 STEN FRANK DAHLQUIST		10/14	425-359-3055	1	ICP/1900	ICP/0700
E-140 ENG5 SCFD #15 BR60		10/13	BRANDON JONES	2	ICP/1900	ICP/0700
E-141 ENG5 SCFD #22 BR68		10/11	CHAD LEE	2	ICP/1900	ICP/0700
E-163 ENG5 WA-SES 4303		10/11	GAVIN BRUMLEY 509-899-7497	4	ICP/1900	ICP/0700
E-181 ENG5 WA-OLS		10/22	BLAKE MANN 360-640-3650	4	ICP/1900	ICP/1900
E-178 AMB2 'AMBO1' 360-219-7608		10/19	JOSHUA CHISNELL	2	ICP/1900	ICP/0700
6. Control Operations/Work Assignments:						
<ul style="list-style-type: none"> • Structure and infrastructure protection. • Prevent fire from crossing Highway 2 to the south and west. • Patrol primary control lines. • Provide point protection around structures 						
7. Special Instructions:						
<ul style="list-style-type: none"> • Use 911 Dispatch if the fire threatens structures. In addition, call Planning Ops Wes Long 360-281-9585 						
8. Division/Group Communication Summary						
Function	Channel	RX Frequency N/W	RX Tone/NAC	TX Frequency N/W	TX Tone/NAC	Mode
TACTICAL	1	151.3100	118.8	151.3100	118.8	A
COMMAND	7	159.4125	118.8	151.4450	118.8	A
COMMAND	8	159.3750	118.8	151.3250	118.8	A
AIR TO GROUND	12	159.2700	103.5	159.2700	103.5	A
AIR TO GROUND	13	151.2875	103.5	151.2875	103.5	A
AIR GUARD	16	168.6250	000.0	168.6250	110.9	A
9. Prepared By (Resource Unit Leader)			Approved By (Planning Section Chief)		Date	Time
PATRICK REID			RYAN SCHARNHORST 		10/09/2022	1900

Division/Group Assignment List (ICS 204 WF)
Controlled Unclassified Information//Basic

1. Incident Name:		3.				
BOLT CREEK		Branch:		Division/Group		
2. Operational Period:		65 ROAD CLOSURE				
DAY/NIGHT SHIFT						
Date/Time From: 10/10/2022 0700 MON		Date/Time To: 10/11/2022 0659 TUE				
4. Operations Personnel						
OPERATIONS CHIEF	RYAN NICHOLLS 814-360-4391		DIVISION SUPERVISOR		BRIAN MCNEIL 425-365-6067	
BRANCH DIRECTOR			AIR ATTACK SUPERVISOR			
PLANNING OPS	WES LONG 360-281-9585 DAN STUCKI 801-860-7865					
5. Resources Assigned this Period						
Strike Team / Task Force / Resource Designator		LWD	Leader	Number Persons	Drop Off PT./Time	Pick Up PT./Time
ROAD SECURITY (GUARD)		10/22	SARAH LARSEN	1	/0600	/2200
ROAD SECURITY (GUARD)		10/22	AVERY PAYNE	1	/0600	/2200
ROAD SECURITY (GUARD)		10/22	FRANK ROSCIGNO	1	/0600	/2200
6. Control Operations/Work Assignments:						
<ul style="list-style-type: none"> • USFS will provide security to the 65 road closure. • Assist fire resources working in the area with access around the road closure and direct public traffic past the road closure location. 						
7. Special Instructions:						
If you access need access when working in the 65 Road area or have any traffic issues contact the Forest Services Guards on Command Channel 8 for assistance.						
8. Division/Group Communication Summary						
Function	Channel	RX Frequency N/W	RX Tone/NAC	TX Frequency N/W	TX Tone/NAC	Mode
COMMAND	8	159.3570	118.8	151.3250	118.8	A
TACTICAL	1	151.3100	118.8	151.3100	118.8	A
9. Prepared By (Resource Unit Leader)			Approved By (Planning Section Chief)		Date	Time
PATRICK REID			RYAN SCHARNHORST 		10/09/2022	1900

INCIDENT RADIO COMMUNICATIONS PLAN (ICS 205)

Controlled Unclassified Information//Basic

1. Incident Name:		2. Date/Time Prepared:		3. Operational Period:	
BOLT CREEK		Date: 10/08/2022	Time: 2350	Date/Time From: 10/10/2022 0700	Date/Time To: 10/11/2022 0659
				MON	TUE

4. Basic Radio Channel Use:										
Zone Group	Ch #	Function	Channel Name/Trunked Radio System Talkgroup	Assignment	RX Freq	RX Tone/NAC	TX Freq	TX Tone/NAC	Mode (A, D, or M)	Remarks
	1	TACTICAL	TAC 1	DIV A	151.3100	118.8	151.3100	118.8	A	
	2	TACTICAL	TAC 2	DIV S	151.3400	118.8	151.3400	118.8	A	
	3	TACTICAL	TAC 3	STRUCTURE GROUP	151.2125	118.8	151.2125	118.8	A	
	4	TACTICAL	DNR COM	UNASSIGNED	151.4150	103.5	151.4150	103.5	A	IA USE ONLY
	5	TACTICAL	REDNET	UNASSIGNED	153.8300	000.0	153.8300	000.0	A	IA USE ONLY
	6	TACTICAL	FS FTAC	UNASSIGNED	168.5625	000.0	168.5625	000.0	A	IA USE ONLY
	7	COMMAND	CMD 7	ALL DIVS	159.4125	118.8	151.4450	118.8	A	LOCATED NORTH OF INDEX LINKED TO CMD 8
	8	COMMAND	CMD 8	ALL DIVS	159.3750	118.8	151.3250	118.8	A	LOCATED ON SOBIESKI LINKED TO CMD 7
	9	COMMAND	SNOHOMIS	FOREST NET	159.4350	141.3	151.1900	141.3	A	DISPATCH CALL SIGN "NW DISPATCH" IA USE ONLY
	10	COMMAND	SULTAN	FOREST NET	159.2475	141.3	151.1825	141.3	A	DISPATCH CALL SIGN "NW DISPATCH" IA USE ONLY
	11	COMMAND	SOBIESKI	FOREST NET	169.5750	146.2	164.9625	156.7	A	DISPATCH CALL SIGN "PUGET SOUND" IA USE ONLY
	12	AIR TO GROUND	DNR A/G1	ALL DIVS	159.2700	103.5	159.2700	103.5	A	PRIMARY A/G
	13	AIR TO GROUND	DNR A/G2	ALL DIVS	151.2875	103.5	151.2875	103.5	A	SECONDARY A/G
	14	AIR TO GROUND	A/G 41	UNASSIGNED	167.4750	000.0	167.4750	000.0	A	
	15	AIR TO GROUND	V MED 29	MEDEVAC	155.3475	156.7	155.3475	156.7	A	MEDEVAC
	16	AIR GUARD	AIRGUARD	EMERGENCY USE	168.6250	000.0	168.6250	110.9	A	EMERGENCY USE

5. Special Instructions:	
6. Prepared By (Communications Unit Leader)	Name: JEFF MINER
Signature: <i>Jeff Miner</i>	Date/Time: 10/08/2022 2350
ICS 205	IAP Page

SAFETY MESSAGE

Incident: Bolt Creek	Date: October 10, 2022
-----------------------------	-------------------------------

➤ Major Hazards and Risks:

Snags	Roads	Steep Ground	Brush Creek –
Monitor only area	Traffic/public	Dry Conditions	Aircraft
Operations	Railroad	Accountability/Communication	

□ **Narrative:**

Practice your defensive driving skills. Keep your speed down, lights on, seat belts on, and give the other person the right of way. Wash your windows and lights routinely and keep vehicle interiors free of trash and litter.

Communications: Ensure communications are in place and all personnel know frequencies. Ensure all personnel have received instructions and they are understood. Ensure all personnel know operational assignments and emergency procedures.

Remain Alert For Hazardous Snags And Rolling Rocks/Debris!

Steep and rocky terrain make foot travel hazardous.

Take a minute to make a plan---don't make a plan a minute!

Safety Quiz: If a tree falls in the forest, were you under it?

**Those who cannot remember the past (or learn from it) are condemned to repeat it.” *George Santayana*
1905**

---Watch Out Situation ---
...Expect the



...UNEXPECTED!!

“Safe Driving Habits”

(a ‘Get Out of Jail Free’ card to health and long life)

- **Yield a full lane to oncoming vehicles**
- **Be prepared to stop in less than half the distance you can see on blind corners and the ridge crests**
- **Keep your speed down!**
Do not force loaded vehicles onto the fill slope

Bolt Creek Fire Information

Fire Information Line 360-370-4170

Email: 2022.boltcreek@firenet.gov

These are for public information AND to email photos & videos to us!

Text your fire photos and short videos to 360-259-5006

Facebook Page

[Bolt Creek Fire Information | Facebook](#)

Inciweb

<https://inciweb.nwcg.gov/incident/8417/>

Did you lose or find something? The PIO booth in the corner of the Incident Command Post is the place for Lost and Found. Be prepared to describe what you are looking for. If you're turning something in, please give us time and location of what you found.

Need to mail something? Drop it by the PIO booth and we will drop it in a mailbox for you.

Code of Conduct Incident Personnel



Each individual on this incident is responsible for:

- ☒ Being *ready and able* to perform their assigned duties effectively.
- ☒ Conducting themselves in a manner that treats people with dignity, equality, courtesy, and respect.
- ☒ Abiding by agency ethics and conduct regulations.
- ☒ Reporting any harassment or other inappropriate behavior.

Each individual of this incident has the right to:

- ☒ Work in an environment characterized by safe work practices.
- ☒ Work in a fair and harassment free environment.
- ☒ Say "No" to unwelcome advances or requests for favors.
- ☒ File complaints or grievances through appropriate avenues.

There is zero tolerance for inappropriate behavior while assigned to the incident, including:

- ☒ Illegal drug use
- ☒ Alcohol use
- ☒ Unsafe work practices and activities
- ☒ Discrimination
- ☒ Sexual harassment
- ☒ Fighting, threatening, and abusive behaviors
- ☒ Using social media and electronic communication devices for personal business while engaged in fire assignment duties.
- ☒ Other violations of Fire Service, Washington DNR, and Federal agency standards of conduct.

Failure to adhere to the Code of Conduct could result in dismissal from the incident, with notification to your home unit.

The public expects our best efforts; they see us as professionals in what we say and do. Let's continue to show them we are!

DNR/DOC Camp Crew Guidelines	1. Incident Name	2. Date Prepared	3. Time Prepared
<p><u>ALL PERSONNEL WORKING AROUND OFFENDERS/DNR KITCHENS</u></p> <p><i>This message is from the Department of Natural Resources and Department of Corrections.</i></p> <ul style="list-style-type: none"> ▶ No person shall be allowed to carry firearms in the area where offenders are working. It is acceptable to secure weapons in vehicles while entering into the working vicinity of offenders. ▶ Do not give or take anything from an offender. Offenders are identified by red ball caps or red hard hats. ▶ <u>Do NOT</u> take photos or interview offenders without approval from the DNR Inmate Liaison. ▶ <u>Do not do any favors for offenders.</u> (Examples: passing on a message, giving tobacco, asking for change, mailing a letter, using a phone. The most innocent act/favor can have consequences that could affect an offender for years.) ▶ Report any suspicious act to the Supervisor, DOC Staff or Inmate Liaison. ▶ Offenders are not allowed to use tobacco products. <u>Do not use tobacco products in or around kitchen area.</u> ▶ Offenders on DNR Crews have committed various crimes. They <u>ARE</u> considered minimum level custody. ▶ Treat Offenders with respect, but <u>don't get personal</u>. Practices the correctional distance...<u>don't get personal</u>. Offenders generally feel good with being part of the fire suppression effort; treat them with the same respect and dignity as other fire fighters but, <u>DON'T GET PERSONAL.</u> ▶ Offenders are trained in their job assignments and their work ethics. They are held accountable for their job performance and their behavior. ▶ Acknowledge crews for a job well done; offenders do good work and appreciate the recognition. ▶ Offenders need good professional role models as part of their rehabilitation process. Consider their presence and set good examples by the context of your conversation and choice of language used. 			
<p>9. Prepared by (Name and Position)</p>			

BOLD CREEK

DEMOB LIST

10/10/22

EQUIPMENT

E-173	0800	(PUP2)	PUP2 - HI COUNTRY L.L.C. -
-------	------	--------	----------------------------

OVERHEAD

O-206.7	0800	(TFLD)	MOORE, ROBERT ALAN
---------	------	--------	--------------------

10/11/22

OVERHEAD

O-144	0800	(DIVS)	STUCKI, DAN
-------	------	--------	-------------

O-171	0800	(BCMG)	TOPPING, CODY ANDREW
-------	------	--------	----------------------

MEDICAL PLAN (ICS 206 WF)

1. Incident/Project Name				2. Operational Period			
Bolt Creek				Date/Time: 10/10/2022-10/11/2022			
3. Ambulance Services							
Name	Complete Address	Phone		Advanced Life Support (ALS)			
				YES	NO		
Sky Valley Fire #54	42013 State HWY 2-Gold Bar	911		X			
Sultan Fire #51	32905 Cascade View Dr	911			X		
Skykomish FD #50	105 E Old Cascade HWY	911			X		
4. Air Ambulance Services							
Name	Phone		Type of Aircraft & Capability				
Airlift Northwest	911 (800-426-2430)		Rotor				
Life Flight	911 (800-232-0911)		Rotor				
5. Hospitals							
Name Complete Address	Degrees Decimal Minutes	Travel Time From ICP Air Ground		Phone	Helipad Yes No		Level of Care Facility
Evergreen Health Monroe 14701 179 th Ave SE Monroe, WA	Lat: N/A	N/A	5 MIN	425-877-9371		X	Level 4
	Long: N/A						
Providence Medical Center 1321 Colby Ave Everett, WA	Lat: 47° 59' 58.5" N	10 MIN	25 MIN	425-404-5601	X		Level 2
	Long: 122° 12' 21.5" W						
Harborview Medical 325 9 th Ave Seattle, WA	Lat: 47° 36' 10.8" N	15 MIN	60 MIN	206-744-3000	X		Level 1 Trauma Burn Center
	Long: 122° 19' 29.6" W						
DIVISIONS							
ICP	EMS Responders:		Chloe Read-MEDL(t)/COVID Liaison W-360-259-6737 C-253-569-2933				
DIV A	EMS Responders & Capabilities:		Medic-Remington Becker / EMT-Jason Luker				
	Medical Emergency Channel:		Command				
	Air:		15 Minutes				
	Ground:		65 Minutes				
	Approved Heli Spot:		Skykomish Airport				
	Lat:		47° 42' 38" N				
	Long:		121° 20' 25" W				
DIV S	EMS Responders & Capabilities:		AMBO 2-Trevor Stanley / Medic-Angel Thorsvold / EMTF-Christy Field				
	Medical Emergency Channel:		Command				
	Air:		15 Minutes				
	Ground:		50 Minutes				
	Approved Heli Spot:		H-67 (Parking Lot)		H-30 (Station 54)		
	Lat:		47° 49' 07" N		47° 50' 31" N		
	Long:		121° 33' 13" W		121° 40' 06" W		
STRUCTURE							
NOT STAFFED WITH MEDICAL PERSONNEL							
NIGHT SHIFT	EMS Responders & Capabilities:		AMBO 1-Josh Chisnell				
	Medical Emergency Channel:		Command				
	Approved Heli Spot DIV A		Skykomish Airport				
	Lat:		47° 42' 38" N				
	Long:		121° 20' 25" W				
	Approved Heli Spot DIV S		H-67 (Parking Lot)		H-30 (Station 54)		
	Lat:		47° 49' 07" N		47° 50' 31" N		
Long:		121° 33' 13" W		121° 40' 06" W			
Prepared by (Medical Unit Leader)			Date:		Reviewed By (Safety Officer)		Date:
Chloe Read MEDL(t) <i>Chloe Read</i>			10/19/22		Ryan Cloud SOFR <i>[Signature]</i>		10-10-2022
In case of emergency (Green, Yellow or Red), establish an IC for the ICP. Follow your medical incident report and contact communications on command. Establish your PACE (Primary, Alternative, Contingency, Emergency) model for medical emergency extraction.							

MEDICAL PLAN (ICS 206 WF)

Controlled Unclassified Information//Basic

Medical Incident Report

FOR A NON-EMERGENCY INCIDENT, WORK THROUGH CHAIN OF COMMAND TO REPORT AND TRANSPORT INJURED PERSONNEL AS NECESSARY.

FOR A MEDICAL EMERGENCY: IDENTIFY ON SCENE INCIDENT COMMANDER BY NAME AND POSITION AND ANNOUNCE "MEDICAL EMERGENCY" TO INITIATE RESPONSE FROM IMT COMMUNICATIONS/DISPATCH.

Use the following items to communicate situation to communications/dispatch.

1. CONTACT COMMUNICATIONS / DISPATCH (Verify correct frequency prior to starting report)

Ex: "Communications, Div. Alpha. Stand-by for Emergency Traffic."

2. INCIDENT STATUS: Provide incident summary (including number of patients) and command structure.

Ex: "Communications, I have a Red priority patient, unconscious, struck by a falling tree. Requesting air ambulance to Forest Road 1 at (Lat./Long.) This will be the Trout Meadow Medical, IC is TFLD Jones. EMT Smith is providing medical care."

Severity of Emergency / Transport Priority	<input type="checkbox"/> RED / PRIORITY 1 Life or limb threatening injury or illness. Evacuation need is IMMEDIATE <i>Ex: Unconscious, difficulty breathing, bleeding severely, 2° - 3° burns more than 4 palm sizes, heat stroke, disoriented.</i> <input type="checkbox"/> YELLOW / PRIORITY 2 Serious Injury or illness. Evacuation may be DELAYED if necessary. <i>Ex: Significant trauma, unable to walk, 2° - 3° burns not more than 1-3 palm sizes.</i> <input type="checkbox"/> GREEN / PRIORITY 3 Minor Injury or illness. Non-Emergency transport <i>Ex: Sprains, strains, minor heat-related illness.</i>	
Nature of Injury or Illness & Mechanism of Injury		<i>Brief Summary of Injury or Illness (Ex: Unconscious, Struck by Falling Tree)</i>
Transport Request		<i>Air Ambulance / Short Haul/Hoist Ground Ambulance / Other</i>
Patient Location		<i>Descriptive Location & Lat. / Long. (WGS84)</i>
Incident Name		<i>Geographic Name + "Medical" (Ex: Trout Meadow Medical)</i>
On-Scene Incident Commander		<i>Name of on-scene IC of Incident within an Incident (Ex: TFLD Jones)</i>
Patient Care		<i>Name of Care Provider (Ex: EMT Smith)</i>

3. INITIAL PATIENT ASSESSMENT: Complete this section for each patient as applicable (start with the most severe patient)

Patient Assessment: See IRPG page 106

Treatment:

4. TRANSPORT PLAN:

Evacuation Location (if different): (Descriptive Location (drop point, intersection, etc.) or Lat. / Long.) Patient's ETA to Evacuation Location:

Helispot / Extraction Site Size and Hazards:

5. ADDITIONAL RESOURCES / EQUIPMENT NEEDS:

Example: Paramedic/EMT, Crews, Immobilization Devices, AED, Oxygen, Trauma Bag, IV/Fluid(s), Splints, Rope rescue, Wheeled litter, HAZMAT, Extrication

6. COMMUNICATIONS: Identify State Air/Ground EMS Frequencies and Hospital Contacts as applicable

Function	Channel Name/Number	Receive (RX)	Tone/NAC *	Transmit (TX)	Tone/NAC *
COMMAND					
AIR-TO-GRND					
TACTICAL					

7. CONTINGENCY: Considerations: If primary options fail, what actions can be implemented in conjunction with primary evacuation method? Be thinking ahead.

8. ADDITIONAL INFORMATION: Updates/Changes, etc.

REMEMBER: Confirm ETA's of resources ordered. Act according to your level of training. Be Alert. Keep Calm. Think Clearly. Act Decisively.