

SEWA Team 2



Incident Action Plan

Tuesday

BOLT CREEK

WA-NWS-150

PN P14322 (1522)

FMAG 221-HPS

OPERATION PERIOD

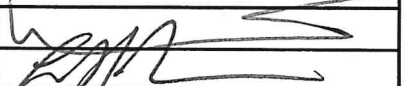
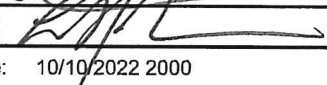
October 11, 2022, 07:00

to


October 12, 2022, 07:00



INCIDENT OBJECTIVES (ICS 202)

1. Incident Name:	2. Operational Period: DAY/NIGHT SHIFT	
BOLT CREEK	Date/Time From: 10/11/2022 0700 TUE	Date/Time To: 10/12/2022 0659 WED
3. Objective(s):		
Management Objectives		
<ul style="list-style-type: none"> • Provide for firefighter and public safety using ongoing risk analysis and reasonable mitigation of identified hazards. • Minimize impacts to communities and infrastructure, and minimize acres burned on private lands along the Highway 2 corridor. • Maintain and enhance relationships with cooperators, stakeholders, landowners, and communities. • Provide accurate and timely information to the public. • Protect tribal, cultural, aquatic, and wildlife resources and sensitive plant sites by coordinating with Resource Advisors. • Treat each other with dignity and respect and act professionally on the fire and in the community. • Manage costs commensurate with values at risk and update Agency Administrators daily. 		
Control Objectives		
<ul style="list-style-type: none"> • Maintain the fire north of Highway 2 utilizing the existing suppression strategy to stop the fire spread to at-risk values. • To control fire, utilize complete suppression and point protection strategies in areas around structures and values. • Keep fire east of Index-Galena Road (FR63) and west of Beckler Creek Road (FR65). • Continue to monitor the fire in the wilderness, only taking action to maintain a fire within the identified east/west parameters. 		
4. Operational Period Command Emphasis:		
<ul style="list-style-type: none"> • Provide a positive presence to the community and the public impacted by the fire. • Continually use a deliberate analysis of risk as you engage the fire, the safety of personnel is the highest priority. Maintain a good plan within your crews and work areas that provide access to line medical personnel and egress, as necessary. • Be aware of values at risk inside and adjacent to the fire perimeter. Engage and suppress fire when safe and employ appropriate tactics for the situation. 		
General Situational Awareness:		
See attached Fire Weather.		
Expect increased traffic on Hwy 2. Use spotters and additional lookouts. Avoid placing personnel or equipment on the roadway unless necessary.		
5. Site Safety Plan Required? Yes <input type="checkbox"/> No <input checked="" type="checkbox"/>		
Approved Site Safety Plan(s) Located		
6. Incident Action Plan (the items checked below are included in this Incident Action Plan):		
<input checked="" type="checkbox"/> ICS 202	<input type="checkbox"/> ICS 207	Other Attachments:
<input checked="" type="checkbox"/> ICS 203	<input checked="" type="checkbox"/> ICS 208	<input checked="" type="checkbox"/> LOGISTICS MESSAGE
<input checked="" type="checkbox"/> ICS 204	<input type="checkbox"/> ICS 220	<input checked="" type="checkbox"/> INFORMATION MESSAGE
<input checked="" type="checkbox"/> ICS 205	<input checked="" type="checkbox"/> Map/Chart	<input checked="" type="checkbox"/> CODE OF CONDUCT
<input checked="" type="checkbox"/> ICS 205A	<input checked="" type="checkbox"/> Weather Forecast/Tides/Currents	<input type="checkbox"/>
<input checked="" type="checkbox"/> ICS 206		
7. Prepared by: RYAN SCHARNHORST	Position/Title: PSC3	Signature: 
8. Approved by Incident Commander:	Name: LEONARD JOHNSON	Signature: 
ICS 202	IAP Page	Date/Time: 10/10/2022 2000

ORGANIZATION ASSIGNMENT LIST (ICS 203)

1. Incident Name:		2. Operational Period: DAY/NIGHT SHIFT	
BOLT CREEK		Date/Time From: 10/11/2022 0700	TUE
		Date/Time To: 10/12/2022 0659	WED
3. Incident Commander(s) and Command Staff:		MEDICAL UNIT	CHLOE READ 253-569-2933 (T)
IC/UC	LEONARD JOHNSON 360-581-9672	CAMP SECURITY	JAMES GREEN 360-519-9932 (DAY) CHAD RIGGN (NIGHT)
INFORMATION OFFICER	KAREN SARGEANT 509-885-0067 DONALD FERGUSON 541-778-2679	7. Operations Section:	
INFORMATION OFFICER	JOSIE WILLIAMS (V) 425-647-1872	OPS SECTION CHIEF	RYAN NICHOLLS 509-430-1606
LIAISON OFFICER	TIM MCKERN (V) 360-463-2767 DAN SMITH (T) (V) 360-340-4386	PLANNING OPS	WES LONG 360-281-9585
SAFETY OFFICER	KEN FOSS 253-318-2678		
4. Agency/Organization Representative(s):		DIVISION/GROUP	A
Agency/Organization	Name		KEN JOHNSON 509-496-5452
DNR- NW REGION ADMIN	JAY S GUTHRIE LAURIE BERGVALL (ACT)	DIVISION/GROUP	S
DNR - NW REGION REP	SHANNON N CLARK		BENJAMIN J LIPPERT 509-675-6362
USFS MSF / AA	JEFF MARSZAL BRYAN MCNEIL (ACT)	DIVISION/GROUP	STRUCTURE
WA STATE PATROL	LT. DEION GLOVER		AARON BIBE 509-591-8620
BNSF	RYAN KUBO	DIVISION/GROUP	NIGHT
SNOHOMISH CO DEM	JARROD DIBBLE		
KING CO DEM	ALYSHA KAPLAN	DIVISION/GROUP	65 ROAD CLOSURE
SNOHOMISH CO SHERIFF	LT. MIKE MARTIN		BRIAN MCNEIL 425-365-6067
KING CO SHERIFF	CAPT. PETER HORVATH	7b. Air Operations Branch:	
SKY VALLEY FD #26	CHIEF ERIC ANDREWS	AIR OPS BRANCH DIRECTOR	
SKYKOMISH FD #50	CHIEF JAMES KNISLEY	AIR ATTACK SUPERVISOR	
USFS LEAD READ	MATT KENNEY	AIR SUPPORT SUPERVISOR	
5. Planning Section:		8. Finance/Administration Section:	
CHIEF	RYAN W SCHARNHORST 509-432-1016 PATRICK K REID 509-537-6343 (T)	CHIEF	PAULA JAMES 808-298-1386
SCKN/DEMOB	JULIA EVERTA 707-683-6782	PTRC	JANET MCINTOSH
TECHNOLOGY SUPPORT SPECIALIST		TIME UNIT	JEANNE CHRISTENSEN
INCIDENT METEOROLOGIST	LISA KRIEDERMAN 240-778-5298		
SITUATION UNIT	DAVID WINTER		
FIRE BEHAVIOR ANALYST	STEVE ZIEL 541-890-6862		
6. Logistics Section:			
CHIEF	CINDY PRESTON 509-607-9724		
DEPUTY	JOSH AMBROSE 360-310-0401		
GROUND SUPPORT UNIT	KEVIN SELL		
COMMUNICATIONS UNIT	JEFF MINER		
BASE CAMP MGR	CODY TOPPING		
EQUIPMENT	CAMERON ESKEBERG		
9. Prepared By:	Name: PATRICK REID	Position/Title: PSC3	Signature:
ICS 203	IAP Page	Date/Time: 10/10/2022 0721	

FINAL



INCIDENT Weather Forecast



FORECAST NO: 24
PREDICTION FOR: 0700 - 0700
SHIFT DATE: Tuesday, October 11, 2022
FORECAST ISSUED: 1700 PDT Oct 10, 2022

NAME OF FIRE: Bolt Creek
UNIT: WA-NDC
SIGNED: *Lisa Kriederman*
Incident Meteorologist

WEATHER DISCUSSION: Clouds in the morning will quickly clear as the upper ridge begins to build in again. However, northwest flow behind yesterday's system will keep the day relatively cool (still 5 degrees above normal for mid October). Upper ridge will take a stronger hold for Wednesday for a 10 degree warmup.

WEATHER FORECAST:

WEATHER: Partly cloudy until 1000, then sunny but hazy skies. Areas of smoke.

MAX TEMPERATURES: 60 to 64 ridges and upper slopes; 68 to 72 lower slopes and valleys.

MIN HUMIDITY: 40 to 45 percent.

20 FT WINDS:

RIDGETOP - North 2 to 4 mph until 0900, then northwest 3 to 5 mph, with gusts to 9 mph in the afternoon.

SLOPE/VALLEY - Variable winds less than 3 mph until 1100, becoming West-northwest 3 to 6 mph with gusts to 12 in the afternoon (strongest along Highway 2).

HAINES INDEX: 4 (Low)

INVERSION: Lifting between 1100 and 1300 hrs.

OUTLOOK FOR TONIGHT: Partly cloudy with thin high clouds. Low temperatures in the mid 40s. Maximum humidity 60 to 80 percent, lowest on upper slopes and ridges. Northeast wind 2 to 6 mph.

OUTLOOK FOR WEDNESDAY:

WEATHER: Thin high clouds in the morning, then clearing.

TEMPERATURES: 70 to 74 ridges and upper slopes; 76 to 80 lower slopes and valleys.

HUMIDITY: 29 to 35 percent.

20 FT WINDS:

RIDGETOP - Northeast 2 to 4 mph becoming East 3 to 5 mph in the afternoon

SLOPE/VALLEY - East 1 to 3 mph becoming West 2 to 4 mph with gusts to 7 mph in the afternoon over Div S, staying East 2 to 4 with gusts to 7 over Div A.

HAINES INDEX: 5 (Moderate)

INVERSION: Lifting between 1000 and 1200 hrs.

EXTRA INFORMATION:

Sunrise: 0719

Sunset: 1825

Fire Behavior Forecast # 02

Name of Incident: Bolt Creek	Administrative Unit: WA-NWS
Date & Time Issued: October 10, 2022 @ 1900	Operational Period: DAY/NIGHT 10/11-12/2022 (0700-0700)
FBAN: Steve Ziel	Signed: /z/ <i>Steve Ziel</i>

Assumptions: ... Continued mild weather with clearing sky by afternoon will maintain moderated fire behavior potential across the fire area. We have all the ingredients for areas of moderate-to-active fire behavior due to dry fuels, heavy fuel loading, and late season conditions. Expect the most favorable burning conditions between 1400-1800. Persistent burning conditions may be expected in heavy fuels, deep duff, and concentrations. Lower slopes/river areas remain smoke sheltered through the period, with good night time humidity recovery. Monitor channeled river wind for increase in fire behavior and wind/slope alignment on ridges.

Weather Summary

*See attached Fire Weather Forecast

Fire Behavior Summary

Fuels in the fire area are primarily composed of *Timber Litter*, and *Timber with Understory*. Primary tree species include mixed sizes of Douglas Fir, Western Hemlock, with scattered True Fir and cedar. Local timber litter is compact to fluffy. Shrub and understory species include mixed hardwoods, and dog-hair conifer thickets. Large snags and heavy fuel loadings are common throughout all areas. Live woody fuels are marginally contributing to and rates of spread and fire intensity. Fuel conditions change by elevation, and aspect. Low crown base height (ladder fuels) and lichen/moss are present in most of the timbered areas. *Lots of maple leaf litter.*

Today's potential fire behavior will generally consist of "smoldering and creeping" – but may include pockets of low-to-moderate upslope surface fire spread with isolated flare ups and torching. Primary spread mechanism is backing on steep slopes, accelerated by rollout. Wind/slope alignment on upper slopes and along drainages may contribute to surface fire spread. Areas of backing, and flanking (lateral) spread may increase in the afternoon with forecast winds, and a little sunshine. Fire activity into the evening will likely diminish with increased humidity and less wind..

* **Fine fuel moisture= 8%-11%, 1000hr. moisture=12%, Woody fuels 190%, Probability of Ignition-20-40%**

Fuel Type	Rate of Spread (CH/HR = FPM)	Flame Length Feet	Spotting Distance	20 MPH Gusts FPM
...If your work area includes -				
Timber Litter (TL5) Heavy	2-3	1-2		2-4
Timber w/ Understory (TU5) Heavy	3-4	4-5		5-6
Timber w/ Understory (TU2) Moderate	4-5	2-3		5-7

Specific Assignments:

Div. A – Monitor fire activity on slopes for flare-ups, rollout and backing rate on lower slopes. Expect continued activity in private parcel (Sec. 26) north of Skykomish with river influence winds. Potential slope reversal near the section 1 and 6 line crossed 6510 Rd.
Div. S – Expect some drainage/wind alignment with increased afternoon winds. Expect smoldering to kindle to flames with wind. Monitor flanking/backing on Heybrook Ridge and 6022 Rd. (Sec. 26), as well as increased activity in lower Barclay Creek (Sec. 35).

Air Operations: Visibility will be impacted by smoke under a cloudy afternoon sky. River valley may be somewhat very smokey.

Safety

At all times.....**Keep informed on fire weather conditions and forecasts** (read the Fire and Weather forecasts, observe weather changes throughout the day, listen to radio). **Know what your fire is doing at all times** (observe smoke, flames, direction, note changing conditions). **Base all actions on current and expected behavior of the fire** (evaluate your situation and the fire activity – anticipate rate of change, consider "what-if's", establish trigger points).

Be alert to changing conditions – don't be lulled into the "same old/same old"fire behavior and weather processes are dynamic and ever changing throughout the day, week, season...

**Today's Fire Behavior Forecast contains 597 words (+79 from previous) written for your situational awareness.*

IAP

Bolt Creek

WA-NWS-000150

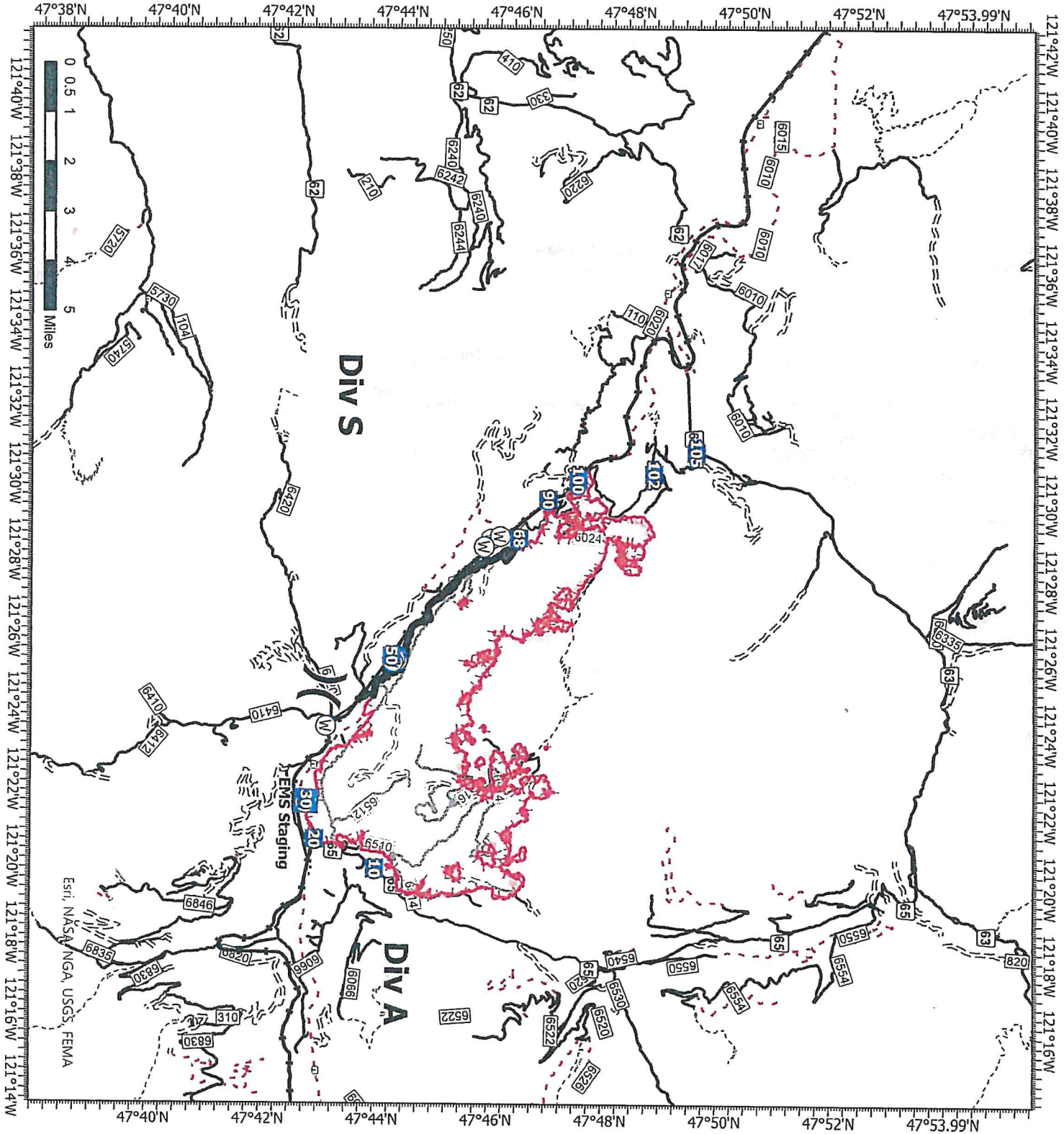
10/10/2022

13,291 acres at 10/10/2022

-) Division Break
- ☒ Medical
- ☒ Drop Point
- ⊕ Water Source
- ⊖ Contained
- Uncontained
- Bureau of Land Management (BLM)
- State
- US Forest Service (USFS)
- Private
- Undetermined
- Railroads
- Open Roads
- Closed Roads
- Decommissioned Roads
- Decommissioned Roads
- Trail



Map updated:
10/9/2022 11:25



Bolt Creek Fire Transportation Map

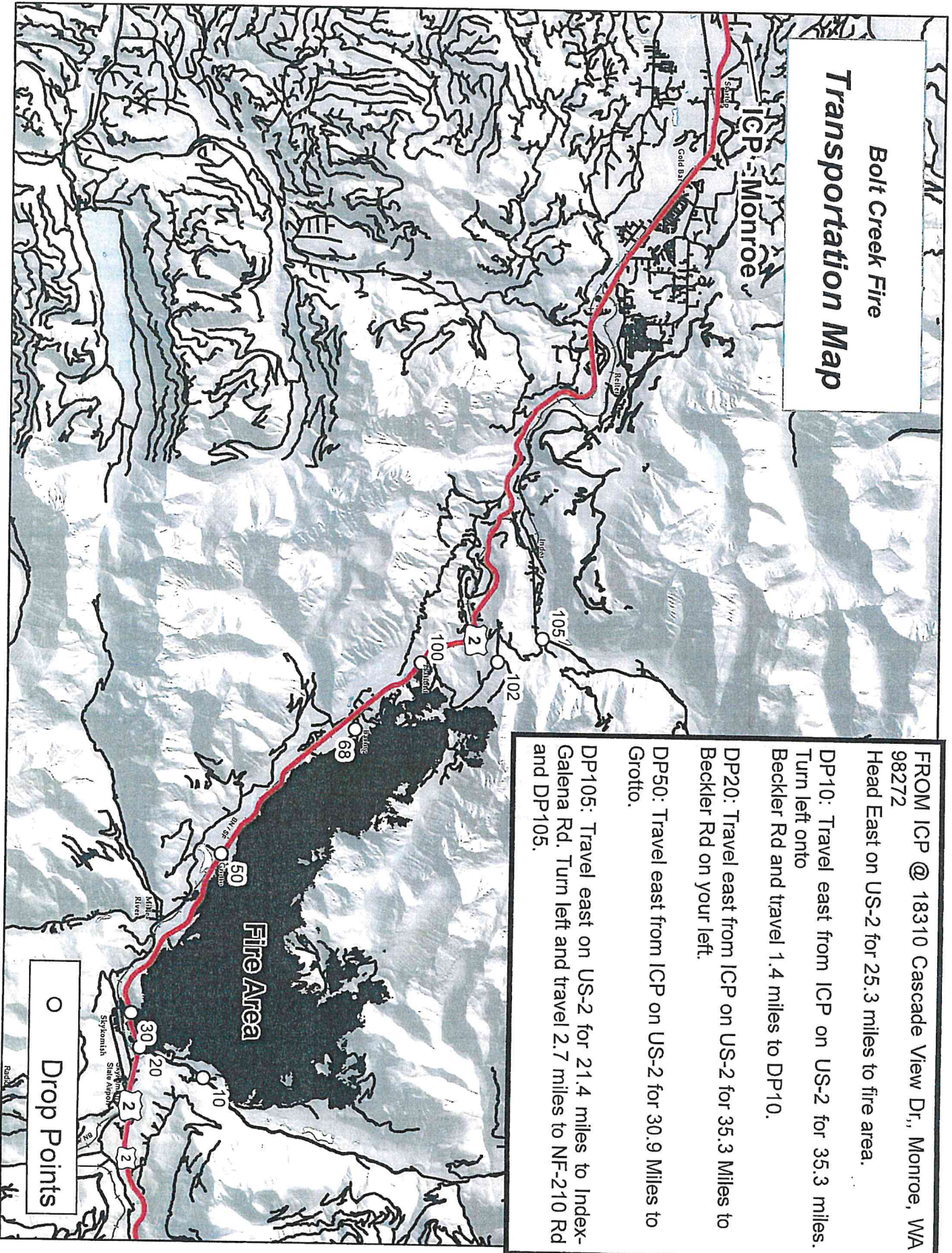
FROM ICP @ 18310 Cascade View Dr., Monroe, WA 98272
Head East on US-2 for 25.3 miles to fire area.

DP10: Travel east from ICP on US-2 for 35.3 miles. Turn left onto Becker Rd and travel 1.4 miles to DP10.

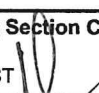
DP20: Travel east from ICP on US-2 for 35.3 Miles to Becker Rd on your left.

DP50: Travel east from ICP on US-2 for 30.9 Miles to Grotto.


DP105: Travel east on US-2 for 21.4 miles to Index-Galena Rd. Turn left and travel 2.7 miles to NF-210 Rd and DP105.



Division/Group Assignment List (ICS 204 WF)
Controlled Unclassified Information//Basic

1. Incident Name:			3.			
BOLT CREEK			Branch:		Division/Group	
2. Operational Period: DAY/NIGHT SHIFT					A	
Date/Time From: 10/11/2022 0700 TUE		Date/Time To: 10/12/2022 0659 WED				
4. Operations Personnel						
OPERATIONS CHIEF		RYAN NICHOLLS 509-430-1606		PLANNING OPS		WES LONG 360-281-9585
FIELD OPS				DIVISION/GROUP SUPERVISOR		KENNETH JOHNSON 509-496-5452
5. Resources Assigned this Period						
Strike Team / Task Force / Resource Designator		LWD	Leader	Number Persons	Drop Off PT./Time	Pick Up PT./Time
O-193 TFL JOTHAN MCGAUGHEY 360-595-3801		10/13		1	ICP/0700	ICP/1900
O-185 STEN ETRINGER (T) *** 360-319-2775		10/14		1	ICP/0700	ICP/1900
E-167 ENG5 WA-NWS 5202 ***		10/13	ISAAC DUGGER	4	ICP/0700	ICP/1900
E-168 ENG5 WA-OLS 1201		10/13	FELIPE BARRAGAN	4	ICP/0700	ICP/1900
E-169 ENG5 WA-NWS 5101		10/13	DOUGLAS LANNING	4	ICP/0700	ICP/1900
E-170 ENG5 WA-PCS 2300		10/13	GRANT EASTHAM	3	ICP/0700	ICP/1900
E-143 WAT4 T195 SKYKOMISH FIRE		10/13	ROB CAMPBELL	1	ICP/0700	ICP/1900
O-224 STEN BRIAN WESEMANN 360-749-6218		10/22		1	ICP/0700	ICP/1900
E-130 ENG LATE SUMMERS WILDFIRE		10/12	NOLAN ETENHOFER	3	ICP/0700	ICP/1900
E-131 ENG MEADOW WILDFIRE		10/12	DAMIEN RAMON	3	ICP/0700	ICP/1900
E-133 ENG RAINIER WILDFIRE		10/12	BRICYN ABDUL	3	ICP/0700	ICP/1900
E-134 ENG NORTHRIDGE WILDFIRE		10/12	BRADLEY BECK	3	ICP/0700	ICP/1900
E-135 ENG RAINIER WILDFIRE		10/12	MIKE SUTTON	3	ICP/0700	ICP/1900
O-177 FMOD RAINSTORM 509-899-5432		10/11	TOMMY PRATT	2	ICP/0700	ICP/1900
O-145 SOFR ANDY MURRIN 541-784-7774		10/13		1	ICP/0700	ICP/1900
O-222 EMPF REMINGTON BECKER 360-903-8612		10/14		1	ICP/0700	ICP/1900
8. Division/Group Communication Summary						
Function	Channel	RX Frequency N/W	RX Tone/NAC	TX Frequency N/W	TX Tone/NAC	Mode
TACTICAL	1	151.3100	118.8	151.3100	118.8	A
COMMAND	7	159.4125	118.8	151.4450	118.8	A
COMMAND	8	159.3750	118.8	151.3250	118.8	A
AIR TO GROUND	12	159.2700	103.5	159.2700	103.5	A
AIR TO GROUND	13	151.2875	103.5	151.2875	103.5	A
AIR GUARD	16	168.6250	000.0	168.6250	110.9	A
9. Prepared By (Resource Unit Leader)		Approved By (Planning Section Chief)			Date	Time
PATRICK REID		RYAN SCHARNHORST 			10/10/2022	0721

Division/Group Assignment List (ICS 204 WF)
Controlled Unclassified Information//Basic

1. Incident Name:		3.				
BOLT CREEK		Branch:		Division/Group		
2. Operational Period:		DAY/NIGHT SHIFT				
Date/Time From: 10/11/2022 0700 TUE		Date/Time To: 10/12/2022 0659 WED				
		A				
4. Operations Personnel						
OPERATIONS CHIEF		RYAN NICHOLLS 509-430-1606		PLANNING OPS		WES LONG 360-281-9585
FIELD OPS				DIVISION/GROUP SUPERVISOR		KENNETH JOHNSON 509-496-5452
5. Resources Assigned this Period						
Strike Team / Task Force / Resource Designator		LWD	Leader	Number Persons	Drop Off PT./Time	Pick Up PT./Time
O-127.18 EMTF JASON LUKER 425-350-3377		10/12		1	ICP/0700	ICP/1900
6. Control Operations/Work Assignments:						
<ul style="list-style-type: none"> Prevent fire from crossing Highway 2 to the south. Patrol primary control lines. Provide point protection around structures. Mop up and prepare a firing operations plan for the area along 6510 Road. Develop a firing operation for the island along 65 Road adjacent to 6510 Road above Drop Point 30. 						
7. Special Instructions:						
<p>*** Maintain Initial Attack (IA) availability.</p> <ul style="list-style-type: none"> Assess suppression repair needs in field maps. Text hourly weather observations to IMET at 240-778-5298. Special Instructions for Highway 2: In the event of trees or debris falling on the highway and interrupting traffic notify WSDOT. Block the roadway using fire apparatus and try to mitigate the hazard if possible. 						
8. Division/Group Communication Summary						
Function	Channel	RX Frequency N/W	RX Tone/NAC	TX Frequency N/W	TX Tone/NAC	Mode
TACTICAL	1	151.3100	118.8	151.3100	118.8	A
COMMAND	7	159.4125	118.8	151.4450	118.8	A
COMMAND	8	159.3750	118.8	151.3250	118.8	A
AIR TO GROUND	12	159.2700	103.5	159.2700	103.5	A
AIR TO GROUND	13	151.2875	103.5	151.2875	103.5	A
AIR GUARD	16	168.6250	000.0	168.6250	110.9	A
9. Prepared By (Resource Unit Leader)		Approved By (Planning Section/Chief)			Date	Time
PATRICK REID		RYAN SCHARNHORST 			10/10/2022	0721


Division/Group Assignment List (ICS 204 WF)
Controlled Unclassified Information//Basic

1. Incident Name:			3.			
BOLT CREEK			Branch:		Division/Group	
2. Operational Period: DAY/NIGHT SHIFT			S			
Date/Time From: 10/11/2022 0700 TUE		Date/Time To: 10/12/2022 0659 WED				
4. Operations Personnel						
OPERATIONS CHIEF		RYAN NICHOLLS 509-430-1606		PLANNING OPS		WES LONG 360-281-9585
FIELD OPS				DIVISION/GROUP SUPERVISOR		BENJAMIN J LIPPERT 509-675-6362
5. Resources Assigned this Period						
Strike Team / Task Force / Resource Designator		LWD	Leader	Number Persons	Drop Off PT./Time	Pick Up PT./Time
O-206.19 TFLD MICHAEL NICK 509-563-9188		10/19		1	ICP/0700	ICP/1900
O-225 TFLD SHAWN ONGERS (T) 509-386-3900		10/15		1	ICP/0700	ICP/1900
C-17 CR2I MT BAKER IA		10/18	ERIK USHER	20	ICP/0700	ICP/1900
C-18 CR2I CR2I - NORTH PACIFIC FORESTRY INC NCC 10B		10/22	JOSE C PEREZ ARELLANO	20	ICP/0700	ICP/1900
C-19 CR2I CR2I - GRAYBACK FORESTRY, INC. NCC 17A		10/23	TIMOTHY BREWER	20	ICP/0700	ICP/1900
O-219 FELB DANIEL OAKLAND (T)		10/18		1	ICP/0700	ICP/1900
O-211 FMOD DBA BAILEY LOGGING		10/18	BEN A NEWMAN	2	ICP/0700	ICP/1900
O-194 FMOD - MOUNTAIN WEST		10/14	MATT HOLZNAGEL	2	ICP/0700	ICP/1900
E-150 CHP2 BROTHERS FIRE		10/19	SHANE MUSTARD	3	ICP/0700	ICP/1900
O-165 STEN GREG SEALS *** 360-480-9485		10/14		1	ICP/0700	ICP/1900
E-139 ENG5 BLACKSTONE FORESTRY		10/20	CASEY FOX	3	ICP/0700	ICP/1900
E-138 ENG4 CHEWACK WILDFIRE INC		10/15	ANDREW GRAVES	3	ICP/0700	ICP/1900
E-137 ENG3 BAILEY ENTERPRISES, L.L.C.		10/13	GREG BAILEY	3	ICP/0700	ICP/1900
E-136 ENG6 LIBERTY WILDFIRE		10/13	CLIFF MIDDLETON	3	ICP/0700	ICP/1900
E-174 WTS2 SNOHOMISH FD26		10/14	ERNIE WALTERS	1	ICP/0700	ICP/1900
E-176 ENG5 OSPREY WILDFIRE, LLC		10/20	DUSTYN WILLIAMS	3	ICP/0700	ICP/1900
8. Division/Group Communication Summary						
Function	Channel	RX Frequency N/W	RX Tone/NAC	TX Frequency N/W	TX Tone/NAC	Mode
TACTICAL	2	151.3400	118.8	151.3400	118.8	A
COMMAND	7	159.4125	118.8	151.4450	118.8	A
COMMAND	8	159.3750	118.8	151.3250	118.8	A
AIR TO GROUND	12	159.2700	103.5	159.2700	103.5	A
AIR TO GROUND	13	151.2875	103.5	151.2875	103.5	A
AIR GUARD	16	168.6250	000.0	168.6250	110.9	A
9. Prepared By (Resource Unit Leader)			Approved By (Planning Section Chief)		Date	Time
PATRICK REID			RYAN SCHARNHORST		10/10/2022	0721

Division/Group Assignment List (ICS 204 WF)
Controlled Unclassified Information//Basic

1. Incident Name:			3.			
BOLT CREEK			Branch:		Division/Group	
2. Operational Period: DAY/NIGHT SHIFT			S			
Date/Time From: 10/11/2022 0700 TUE		Date/Time To: 10/12/2022 0659 WED				
4. Operations Personnel						
OPERATIONS CHIEF		RYAN NICHOLLS 509-430-1606		PLANNING OPS		WES LONG 360-281-9585
FIELD OPS				DIVISION/GROUP SUPERVISOR		BENJAMIN J LIPPERT 509-675-6362
5. Resources Assigned this Period						
Strike Team / Task Force / Resource Designator		LWD	Leader	Number Persons	Drop Off PT./Time	Pick Up PT./Time
O-155 EMPF ANGEL THORSVOLD 541-588-2314		10/14		1	ICP/0700	ICP/1900
O-172 EMTB CHRISTY FIELD 541-399-6943		10/18		1	ICP/0700	ICP/1900
E-185 AMB2 "AMBO 2" 360-620-6558		10/25	TREVOR STANELY	2	ICP/0700	ICP/1900
E-149 DOZ2 BURGESS LOGGING		10/22	BUZZ CREIGHTON	2	ICP/0700	ICP/1900
6. Control Operations/Work Assignments:						
<ul style="list-style-type: none"> • Structure and infrastructure protection. • Prevent fire from crossing Highway 2 to the west. • Patrol primary control lines. • Provide point protection around structures. 						
7. Special Instructions:						
<p>*** Maintain Initial Attack (IA) availability.</p> <ul style="list-style-type: none"> • Ambulance (E-185), "AMBO 2", is staged at Money Creek. • Text hourly weather observations to IMET at 240-778-5298. • Assess suppression repair needs in field maps • Develop alternative options for fire activity near DP100 • Continue chipping and road preparation on 6022 Road • Improve spur 120 off of 6022 Road • Reassess current indirect line placement for effectiveness. • Special Instructions for the Highway: In the event of trees or debris falling on the highway and interrupting traffic notify WSDOT. Block the road lane using fire apparatus and try to mitigate the hazard if possible. 						
8. Division/Group Communication Summary						
Function	Channel	RX Frequency N/W	RX Tone/NAC	TX Frequency N/W	TX Tone/NAC	Mode
TACTICAL	2	151.3400	118.8	151.3400	118.8	A
COMMAND	7	159.4125	118.8	151.4450	118.8	A
COMMAND	8	159.3750	118.8	151.3250	118.8	A
AIR TO GROUND	12	159.2700	103.5	159.2700	103.5	A
AIR TO GROUND	13	151.2875	103.5	151.2875	103.5	A
AIR GUARD	16	168.6250	000.0	168.6250	110.9	A
9. Prepared By (Resource Unit Leader)			Approved By (Planning Section Chief)		Date	Time
PATRICK REID			RYAN SCHARNHORST		10/10/2022	0721

Division/Group Assignment List (ICS 204 WF)
Controlled Unclassified Information//Basic

1. Incident Name:			3.			
BOLT CREEK			Branch:		Division/Group	
2. Operational Period:			DAY/NIGHT SHIFT			
Date/Time From: 10/11/2022 0700 TUE		Date/Time To: 10/12/2022 0659 WED		STRUCTURE		
4. Operations Personnel						
OPERATIONS CHIEF		RYAN NICHOLLS 509-430-1606		DIVISION/GROUP SUPERVISOR		AARON BIBE 509-591-8620
PLANNING OPS		WES LONG 360-281-9585				
5. Resources Assigned this Period						
Strike Team / Task Force / Resource Designator		LWD	Leader	Number Persons	Drop Off PT./Time	Pick Up PT./Time
O-197 TFLD ADAM KENNETH JONES (T) 509-683-2092		10/16		1	ICP/0700	ICP/1900
E-175 ENG5 - E8142		10/21	REECE JOHNSON	3	ICP/0700	ICP/1900
E-177 ENG5 ENG5 - LIBERTY WILDFIRE, INC.		10/20	KATHLEEN CALVIN			
E-180 ENG5 (ENG1205) WA-OLS		10/23	REGGIE BUATTNOR 360-670-7320	3	ICP/0700	ICP/1900
E-182 ENG5 METHOW RIVER WILD		10/23	JOHN NEUNEKOR 509-409-1485	3	ICP/0700	ICP/1900
E-183 ENG5 - LL MEADOW WILDFIRE INC 206-556-9942		10/21	WESLEY JAMES	3	ICP/0700	ICP/1900
E-184 WTS2 WTS2 -T2 -SNOHOMISH FD25 - T37A		10/20	JAY THOMAS FISCHER	1	ICP/0700	ICP/0700
E-179 CHP2 CHPW - ROAD HOME, INC., THE - 1VR2181V9G1008312		10/20	ANDREW GIBBS	2	ICP/0700	ICP/1900
6. Control Operations/Work Assignments:						
<ul style="list-style-type: none"> Maintain current protection along the Hwy 2 corridor. Patrol for spot fires. Support the pre-planning of the firing operations around structures in Division S. 						
7. Special Instructions:						
<ul style="list-style-type: none"> Maintain awareness of construction traffic along 63 Road. Validate structure protection plan. Implement the structure protection plan at Haybrook Lookout if the fire cross 6022 Road. 						
8. Division/Group Communication Summary						
Function	Channel	RX Frequency N/W	RX Tone/NAC	TX Frequency N/W	TX Tone/NAC	Mode
TACTICAL	3	151.2125	118.8	151.2125	118.8	A
COMMAND	7	159.4125	118.8	151.4450	118.8	A
COMMAND	8	159.3750	118.8	151.3250	118.8	A
AIR TO GROUND	12	159.2700	103.5	159.2700	103.5	A
AIR TO GROUND	13	151.2875	103.5	151.2875	103.5	A
AIR GUARD	16	168.6250	000.0	168.6250	110.9	A
9. Prepared By (Resource Unit Leader)		Approved By (Planning Section Chief)			Date	Time
PATRICK REID		RYAN SCHARNHORST 			10/10/2022	0721

Division/Group Assignment List (ICS 204 WF)
Controlled Unclassified Information//Basic

1. Incident Name:			3.			
BOLT CREEK			Branch:		Division/Group	
2. Operational Period: DAY/NIGHT SHIFT					NIGHT SHIFT	
Date/Time From: 10/11/2022 0700 TUE		Date/Time To: 10/12/2022 0659 WED				
4. Operations Personnel						
OPERATIONS CHIEF		RYAN NICHOLLS 509-430-1606		PLANNING OPS		WES LONG 360-281-9585
DIVISION/GROUP SUPERVISOR						
5. Resources Assigned this Period						
Strike Team / Task Force / Resource Designator	LWD	Leader	Number Persons	Drop Off PT./Time	Pick Up PT./Time	
O-168 STEN FRANK DAHLQUIST	10/14	425-359-3055	1	ICP/1900	ICP/0700	
E-140 ENG5 SCFD #15 BR60	10/13	BRANDON JONES	2	ICP/1900	ICP/0700	
E-141 ENG5 SCFD #22 BR68	10/11	CHAD LEE	2	ICP/1900	ICP/0700	
E-163 ENG5 WA-SES 4303	10/11	GAVIN BRUMLEY 509-899-7497	4	ICP/1900	ICP/0700	
E-181 ENG5 WA-OLS	10/22	BLAKE MANN 360-640-3650	4	ICP/1900	ICP/1900	
E-178 AMB2 'AMBO1' 360-219-7608	10/19	JOSHUA CHISNELL	2	ICP/1900	ICP/0700	
E-188 ENG5 ENG5 - T5 - SNOHOMISH FD16 - BR85A	10/22	JADON WYATT NANNERY	3	ICP/0700	ICP/1900	
E-189 ENG6 ENG6 - SNOHOMISH FD26 - BR54	10/22	NOLAN JON HEISEL	2	ICP/0700	ICP/1900	
6. Control Operations/Work Assignments:						
<ul style="list-style-type: none"> • Structure and infrastructure protection. • Prevent fire from crossing Highway 2 to the south and west. • Patrol primary control lines. • Provide point protection around structures 						
7. Special Instructions:						
<ul style="list-style-type: none"> • Provide updates, IWI directly to the COML section, and at night call Planning Ops Wes Long at 360-281-9585. 						
8. Division/Group Communication Summary						
Function	Channel	RX Frequency N/W	RX Tone/NAC	TX Frequency N/W	TX Tone/NAC	Mode
TACTICAL	1	151.3100	118.8	151.3100	118.8	A
COMMAND	7	159.4125	118.8	151.4450	118.8	A
COMMAND	8	159.3750	118.8	151.3250	118.8	A
AIR TO GROUND	12	159.2700	103.5	159.2700	103.5	A
AIR TO GROUND	13	151.2875	103.5	151.2875	103.5	A
AIR GUARD	16	168.6250	000.0	168.6250	110.9	A
9. Prepared By (Resource Unit Leader)		Approved By (Planning Section Chief)		Date	Time	
PATRICK REID		RYAN SCHARNHORST		10/10/2022	0721	

Division/Group Assignment List (ICS 204 WF)
Controlled Unclassified Information//Basic

1. Incident Name:			3.			
BOLT CREEK			Branch:		Division/Group	
2. Operational Period: DAY/NIGHT SHIFT			65 ROAD CLOSURE			
Date/Time From: 10/11/2022 0700 TUE		Date/Time To: 10/12/2022 0659 WED				
4. Operations Personnel						
OPERATIONS CHIEF		RYAN NICHOLLS 814-360-4391		DIVISION SUPERVISOR		BRIAN MCNEIL 425-365-6067
PLANNING OPS		WES LONG 360-281-9585				
5. Resources Assigned this Period						
Strike Team / Task Force / Resource Designator		LWD	Leader	Number Persons	Drop Off PT./Time	Pick Up PT./Time
ROAD SECURITY (GUARD)		10/22	SARAH LARSEN	1	/0600	/2200
ROAD SECURITY (GUARD)		10/22	AVERY PAYNE	1	/0600	/2200
ROAD SECURITY (GUARD)		10/22	FRANK ROSCIGNO	1	/0600	/2200
6. Control Operations/Work Assignments:						
<ul style="list-style-type: none"> • USFS will provide security to the 65 road closure. • Assist fire resources working in the area with access around the road closure and direct pubic traffic past the road closure location. 						
7. Special Instructions:						
If you need access when working in the 65 Road area or have any traffic issues contact the Forest Service's Guards on Command Channel 8 for assistance.						
8. Division/Group Communication Summary						
Function	Channel	RX Frequency N/W	RX Tone/NAC	TX Frequency N/W	TX Tone/NAC	Mode
COMMAND	8	159.3570	118.8	151.3250	118.8	A
TACTICAL	1	151.3100	118.8	151.3100	118.8	A
9. Prepared By (Resource Unit Leader)			Approved By (Planning Section Chief)		Date	Time
PATRICK REID			RYAN SCHARNHORST		10/10/2022	0721

INCIDENT RADIO COMMUNICATIONS PLAN (ICS 205)

Controlled Unclassified Information//Basic

1. Incident Name: BOLT CREEK	2. Date/Time Prepared: Date: 10/10/2022 Time: 0721	3. Operational Period: Date/Time From: 10/11/2022 0700 Date/Time To: 10/12/2022 0659
		DAY/NIGHT SHIFT TUE

4. Basic Radio Channel Use:												
Zone Group	Ch #	Function	Channel Name/Trunked Radio System Talkgroup	Assignment	RX Freq	RX Tone/NAC	TX Freq	TX Tone/NAC	Mode (A, D, or M)	Remarks		
	1	TACTICAL	TAC 1	DIV A	151.3100	118.8	151.3100	118.8	A			
	2	TACTICAL	TAC 2	DIV S	151.3400	118.8	151.3400	118.8	A			
	3	TACTICAL	TAC 3	STRUCTURE GROUP	151.2125	118.8	151.2125	118.8	A			
	4	TACTICAL	DNR COM	UNASSIGNED	151.4150	103.5	151.4150	103.5	A	IA USE ONLY		
	5	TACTICAL	REDNET	UNASSIGNED	153.8300	000.0	153.8300	000.0	A	IA USE ONLY		
	6	TACTICAL	FS FTAC	UNASSIGNED	168.5625	000.0	168.5625	000.0	A	IA USE ONLY		
	7	COMMAND	CMD 7	ALL DIVS	159.4125	118.8	151.4450	118.8	A	LOCATED NORTH OF INDEX LINKED TO CMD 8		
	8	COMMAND	CMD 8	ALL DIVS	159.3750	118.8	151.3250	118.8	A	LOCATED ON SOBIESKI LINKED TO CMD 7		
	9	COMMAND	SNOHOMIS	FOREST NET	159.4350	141.3	151.1900	141.3	A	DISPATCH CALL SIGN "NW DISPATCH" IA USE ONLY		
	10	COMMAND	SULTAN	FOREST NET	159.2475	141.3	151.1825	141.3	A	DISPATCH CALL SIGN "NW DISPATCH" IA USE ONLY		
	11	COMMAND	SOBIESKI	FOREST NET	169.5750	146.2	164.9625	156.7	A	DISPATCH CALL SIGN "PUGET SOUND" IA USE ONLY		
	12	AIR TO GROUND	DNR A/G1	ALL DIVS	159.2700	103.5	159.2700	103.5	A	PRIMARY A/G		
	13	AIR TO GROUND	DNR A/G2	ALL DIVS	151.2875	103.5	151.2875	103.5	A	SECONDARY A/G		
	14	AIR TO GROUND	A/G 41	UNASSIGNED	167.4750	000.0	167.4750	000.0	A			
	15	AIR TO GROUND	V MED 29	MEDEVAC	155.3475	156.7	155.3475	156.7	A	MEDEVAC		
	16	AIR GUARD	AIRGUARD	EMERGENCY USE	168.6250	000.0	168.6250	110.9	A	EMERGENCY USE		

5. Special Instructions:	
6. Prepared By (Communications Unit Leader)	Name: JEFF MINER
Signature: <i>Jeff Miner</i>	Signature:
ICS 205	Date/Time: 10/10/2022 0721

HEALTH AND SAFETY MESSAGE

SAFETY starts with **YOU!**

We are **ALL** accountable for **SAFE** behaviors and actions.

INCIDENT: Bolt Creek

DATE: 10-11-2022

Significant Hazards and Risks:

- Know your Assignment
- Steep and Rugged Terrain
- Falling Snags / Danger Trees
- Transportation
- Fatigue
- Road Conditions
- Local Traffic
- Fire Behavior

Fire Order of the Day – Give clear instructions and be sure they are understood

Communications:

- Ensure communications are in place and all personnel knows frequencies.
- Ensure all personnel has received instructions and they are understood.
- Ensure all personnel knows operational assignments and emergency procedures.

Ensure: Lookouts, Communications, Escape Routes, and Safety Zones are in place and known to all.

Continue to respect the area you are working in. Keep a clean camp, and pack in and pack out all trash from the fireline. Continue backhauling all supplies, equipment, and garbage as the opportunities arise.

Safety is an attitude based on awareness of your environment and capabilities.

Decision-making (at all levels) represents one human characteristic that can significantly influence your safety and effectiveness.

All personnel are responsible for adhering to safe practices & correcting violations.

Accidents are the result of inadequate assessments of hazards.

Have a good and safe shift!

Watch Out Situation of the Day



6. INSTRUCTIONS AND ASSIGNMENTS NOT CLEAR

Communication Responsibilities

All Firefighters have five communication responsibilities.

- ***Briefings** – All resources require briefings. Use the briefing checklist in the pocket guide.
- ***Debrief actions** – as necessary. Use the pocket guide After Action Review to stimulate discussion and provide guidance.
- ***Communicate Hazards to Others** –
- ***Acknowledge messages** –
- ***Ask if you do not know** – Ask questions in unfamiliar situations. The only dumb question is the one you did not ask.


The most significant problem with communication is the illusion that it has been achieved.

1. Incident Name: BOLT CREEK
ICP – Evergreen State Fairgrounds

2. Operational Period: Date: 10/10/22 - 10/11/22
From: 0700-0700

3. Basic Local Communications Information:

Name	Incident Assigned Position	Cell Phone Number / Email Address
Communications Unit		360-259-7651
Finance Section		360-481-7668
Information Officer		360-259-5006
Medical Unit		360-259-6737
Ordering Unit		360-481-0718
Planning Section		360-481-5153
Safety Officer		360-259-9535

4. Prepared by: Name: Ryan Scharnhorst Position/Title: PSC3 Signature: 

Bolt Creek Fire

Logistics Information

Base Camp Operating

Quiet Hours	2200 – 0500
Supply	0600 – 2100
Food	0600 - 0900 and 1800 – 2100
Medical Tent	0600 – 2100 (available 24 hours – after posted hours, please call the number posted on the medical Yurt.)
Refer Van	0600 – 2000 for lunch and ice pick-ups
Showers	05:30 – 1200 and 1500 – 2200
Supply	0600 – 2100
Laundry	Drop off clothes to Supply by <u>0830</u> hrs. Expect a 48-hour turn-around. Pick-up for laundry will be at Supply.
Supply Orders	All supply orders need to be into the logistics by <u>1800</u> hrs. for Next-day delivery.

NOTE: All equipment and Overhead request have a 48-hour lag time.

Bolt Creek Fire Information

Fire Information Line 360-370-4170

Email: 2022.boltcreek@firenet.gov

***These are for public information AND to email photos & videos to us!
Text your fire photos and short videos to 360-259-5006***

Facebook Page

[Bolt Creek Fire Information | Facebook](#)

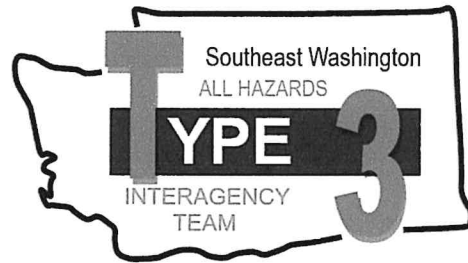
Inciweb

<https://inciweb.nwcg.gov/incident/8417/>

Did you lose or find something? The PIO booth in the corner of the Incident Command Post is the place for Lost and Found. Be prepared to describe what you are looking for. If you're turning something in, please give us time and location of what you found.

Need to mail something? Drop it by the PIO booth and we will drop it in a mailbox for you.

Code of Conduct Incident Personnel



Each individual on this incident is responsible for:

- ☞ Being *ready and able* to perform their assigned duties effectively.
- ☞ Conducting themselves in a manner that treats people with dignity, equality, courtesy, and respect.
- ☞ Abiding by agency ethics and conduct regulations.
- ☞ Reporting any harassment or other inappropriate behavior.

Each individual of this incident has the right to:

- ☞ Work in an environment characterized by safe work practices.
- ☞ Work in a fair and harassment free environment.
- ☞ Say “No” to unwelcome advances or requests for favors.
- ☞ File complaints or grievances through appropriate avenues.

There is zero tolerance for inappropriate behavior while assigned to the incident, including:

- ☞ Illegal drug use
- ☞ Alcohol use
- ☞ Unsafe work practices and activities
- ☞ Discrimination
- ☞ Sexual harassment
- ☞ Fighting, threatening, and abusive behaviors
- ☞ Using social media and electronic communication devices for personal business while engaged in fire assignment duties.
- ☞ Other violations of Fire Service, Washington DNR, and Federal agency standards of conduct.

Failure to adhere to the Code of Conduct could result in dismissal from the incident, with notification to your home unit.

The public expects our best efforts; they see us as professionals in what we say and do. Let's continue to show them we are!

DNR/DOC Camp Crew Guidelines	1. Incident Name	2. Date Prepared	3. Time Prepared
-------------------------------------	------------------	------------------	------------------

ALL PERSONNEL WORKING AROUND OFFENDERS/DNR KITCHENS

This message is from the Department of Natural Resources and Department of Corrections.

- ▶ No person shall be allowed to carry firearms in the area where offenders are working. It is acceptable to secure weapons in vehicles while entering into the working vicinity of offenders.
- ▶ Do not give or take anything from an offender. Offenders are identified by red ball caps or red hard hats.
- ▶ Do NOT take photos or interview offenders without approval from the DNR Inmate Liaison.
- ▶ Do not do any favors for offenders. (Examples: passing on a message, giving tobacco, asking for change, mailing a letter, using a phone. The most innocent act/favor can have consequences that could affect an offender for years.)
- ▶ Report any suspicious act to the Supervisor, DOC Staff or Inmate Liaison.
- ▶ Offenders are not allowed to use tobacco products. Do not use tobacco products in or around kitchen area.
- ▶ Offenders on DNR Crews have committed various crimes. They ARE considered minimum level custody.
- ▶ Treat Offenders with respect, but don't get personal. Practices the correctional distance...don't get personal. Offenders generally feel good with being part of the fire suppression effort; treat them with the same respect and dignity as other fire fighters but, DON'T GET PERSONAL.
- ▶ Offenders are trained in their job assignments and their work ethics. They are held accountable for their job performance and their behavior.
- ▶ Acknowledge crews for a job well done; offenders do good work and appreciate the recognition.
- ▶ Offenders need good professional role models as part of their rehabilitation process. Consider their presence and set good examples by the context of your conversation and choice of language used.

9. Prepared by (Name and Position)

BOLD CREEK

DEMOB LIST

10/11/22

OVERHEAD

O-177	0000	(FMOD)	RAINSTORM TOMMY PRATT
O-144	0800	(DIVS)	STUCKI, DAN

10/12/22

EQUIPMENT

E-141	0730	(ENG5)	SNO COUNTY FD #22 BR68
E-163	0730	(ENG5)	ENG5 - E4303 - WA - SES

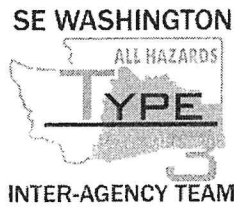
OVERHEAD

O-154	0830	(PIOF)	SUMMY, JANINE ANDREA
-------	------	--------	----------------------

10/13/22

EQUIPMENT

E-83	0000	(GWT2)	SPERRY, JASON
E-168	0000	(ENG5)	ENG5 - ENGINE 1201 - WAOLS (WA-
E-170	0000	(ENG5)	ENG5 - 2300 - WA-PCS



BOLT CREEK FIRE

ANDY PALMER/DUTCH CREEK EMERGENCY MEDICAL EVACUATION TIMES

LEADER’S INTENT: To establish **approximate** travel times from key areas of the fire to Skykomish Airport, as well as area hospitals by ground transportation. See Medical Plan (ICS206) for travel times via air and Heli spot Lat and Long. Not all DPs are on the chart. Travel times are approximate, and one should always consider weather, time of day, traffic, and road/trail conditions.

Ground Transport Only	Skykomish Airport	Evergreen Health Monroe	Providence Medical Center (Everett)	Harborview Medical Center (Seattle)
DP-10 (Beckler River CG)	4 Mins	50 Mins	1 Hr 10 Mins	1 Hr 30 Mins
DP-20 (FS-65 and HWY 2)	2 Mins	45 Mins	1 Hr 5 Mins	1 Hr 25 Mins
DP-30 (Smokey’s)	2 Mins	45 Mins	2 Hr 5 Mins	1 Hr 25 Mins
DP-50 (Grotto)	8 Mins	40 Mins	1 Hr	1 Hr 20 Mins
DP-68 (Jim’s Place)	15 Mins	40 Mins	1 Hr	1 Hr 20 Mins
DP-90 (Railroad)	11 Mins	35 Mins	1 Hr	1 Hr 20 Mins
DP-100 (Halford)	12 Mins	35 Mins	1 Hr	1 Hr 20 Mins
DP-102 (120 Spur Rd)	30 Mins	45 Mins	1 Hr	1 Hr 20 Mins
DP-105 (63 Rd and 210)	25 Mins	40 Mins	1 Hr	1 Hr 20 Mins
H-30 (Station 54)	25 Mins	30 Mins	50 Mins	1 Hr 10 Mins
H-67 (Parking Lot)	20 Mins	30 Mins	55 Mins	1 Hr 10 Mins

Study your map. Know where you are working. Know where your medical resources are located today. Situational awareness is your job.

Please provide additional relevant drive times information to SOF2s at ICP in order to populate this table more thoroughly. Help us help you in your time of need.

MEDICAL PLAN (ICS 206 WF)

1. Incident/Project Name				2. Operational Period								
Bolt Creek				Date/Time: 10/11/2022-10/12/2022								
3. Ambulance Services												
Name		Complete Address		Phone		Advanced Life Support (ALS)						
						YES	NO					
Sky Valley Fire #54		42013 State HWY 2-Gold Bar		911		X						
Sultan Fire #51		32905 Cascade View Dr		911			X					
Skykomish FD #50		105 E Old Cascade HWY		911			X					
4. Air Ambulance Services												
Name		Phone		Type of Aircraft & Capability								
Airlift Northwest		911 (800-426-2430)		Rotor								
Life Flight		911 (800-232-0911)		Rotor								
5. Hospitals												
Name Complete Address		Degrees Decimal Minutes		Travel Time From ICP Air Ground		Phone		Helipad Yes No		Level of Care Facility		
Evergreen Health Monroe 14701 179 th Ave SE Monroe, WA		Lat:	N/A		N/A	5 MIN	425-877-9371			X	Level 4	
		Long:	N/A									
Providence Medical Center 1321 Colby Ave Everett, WA		Lat:	47° 59' 58.5" N		10 MIN	25 MIN	425-404-5601		X		Level 2	
		Long:	122° 12' 21.5" W									
Harborview Medical 325 9 th Ave Seattle, WA		Lat:	47° 36' 10.8" N		15 MIN	60 MIN	206-744-3000		X		Level 1 Trauma Burn Center	
		Long:	122° 19' 29.6" W									
DIVISIONS												
ICP		EMS Responders:				Chloe Read-MEDL(t)/COVID Liaison W-360-259-6737 C-253-569-2933						
DIV A		EMS Responders & Capabilities:				Medic-Remington Becker / EMT-Jason Luker						
		Medical Emergency Channel:				Command						
		Air:				15 Minutes						
		Ground:				65 Minutes						
		Approved Heli Spot:				Skykomish Airport						
		Lat:				47° 42' 38" N						
		Long:				121° 20' 25" W						
DIV S		EMS Responders & Capabilities:				AMBO 2-Trevor Stanley / Medic-Angel Thorsvold / EMTF-Christy Field						
		Medical Emergency Channel:				Command						
		Air:				15 Minutes						
		Ground:				50 Minutes						
		Approved Heli Spot:				H-67 (Parking Lot)		H-30 (Station 54)				
		Lat:				47° 49' 07" N		47° 50' 31" N				
		Long:				121° 33' 13" W		121° 40' 06" W				
STRUCTURE		NOT STAFFED WITH MEDICAL PERSONNEL										
NIGHT SHIFT		EMS Responders & Capabilities:				AMBO 1-Josh Chisnell						
		Medical Emergency Channel:				Command						
		Approved Heli Spot DIV A				Skykomish Airport						
		Lat:				47° 42' 38" N						
		Long:				121° 20' 25" W						
		Approved Heli Spot DIV S				H-67 (Parking Lot)		H-30 (Station 54)				
		Lat:				47° 49' 07" N		47° 50' 31" N				
Long:				121° 33' 13" W		121° 40' 06" W						
Prepared by (Medical Unit Leader)				Date:		Reviewed By (Safety Officer)				Date:		
Chloe Read MEDL(t) <i>Chloe Read</i>				10/10/22		Ken Foss SOFR <i>[Signature]</i>				10/10/22		
In case of emergency (Green, Yellow or Red), establish an IC for the IW1, follow your medical incident report and contact communications on command. Establish your PACE (Primary, Alternative, Contingency, Emergency) model for medical emergency extraction.												

MEDICAL PLAN (ICS 206 WF)

Controlled Unclassified Information//Basic

Medical Incident Report

FOR A NON-EMERGENCY INCIDENT, WORK THROUGH CHAIN OF COMMAND TO REPORT AND TRANSPORT INJURED PERSONNEL AS NECESSARY.

FOR A MEDICAL EMERGENCY: IDENTIFY ON SCENE INCIDENT COMMANDER BY NAME AND POSITION AND ANNOUNCE "MEDICAL EMERGENCY" TO INITIATE RESPONSE FROM IMT COMMUNICATIONS/DISPATCH.

Use the following items to communicate situation to communications/dispatch.

1. CONTACT COMMUNICATIONS / DISPATCH (Verify correct frequency prior to starting report)

Ex: "Communications, Div. Alpha. Stand-by for Emergency Traffic."

2. INCIDENT STATUS: Provide incident summary (including number of patients) and command structure.

Ex: "Communications, I have a Red priority patient, unconscious, struck by a falling tree. Requesting air ambulance to Forest Road 1 at (Lat./Long.) This will be the Trout Meadow Medical, IC is TFLD Jones. EMT Smith is providing medical care."

Severity of Emergency / Transport Priority	<input type="checkbox"/> RED / PRIORITY 1 Life or limb threatening injury or illness. Evacuation need is IMMEDIATE <i>Ex: Unconscious, difficulty breathing, bleeding severely, 2° - 3° burns more than 4 palm sizes, heat stroke, disoriented.</i> <input type="checkbox"/> YELLOW / PRIORITY 2 Serious Injury or illness. Evacuation may be DELAYED if necessary. <i>Ex: Significant trauma, unable to walk, 2° - 3° burns not more than 1-3 palm sizes.</i> <input type="checkbox"/> GREEN / PRIORITY 3 Minor Injury or illness. Non-Emergency transport <i>Ex: Sprains, strains, minor heat-related illness.</i>	
Nature of Injury or Illness & Mechanism of Injury		<i>Brief Summary of Injury or Illness (Ex: Unconscious, Struck by Falling Tree)</i>
Transport Request		<i>Air Ambulance / Short Haul/Hoist Ground Ambulance / Other</i>
Patient Location		<i>Descriptive Location & Lat. / Long. (WGS84)</i>
Incident Name		<i>Geographic Name + "Medical" (Ex: Trout Meadow Medical)</i>
On-Scene Incident Commander		<i>Name of on-scene IC of Incident within an Incident (Ex: TFLD Jones)</i>
Patient Care		<i>Name of Care Provider (Ex: EMT Smith)</i>

3. INITIAL PATIENT ASSESSMENT: Complete this section for each patient as applicable (start with the most severe patient)

Patient Assessment: See IRPG page 106

Treatment:

4. TRANSPORT PLAN:

Evacuation Location (if different): (Descriptive Location (drop point, intersection, etc.) or Lat. / Long.) Patient's ETA to Evacuation Location:

Helispot / Extraction Site Size and Hazards:

5. ADDITIONAL RESOURCES / EQUIPMENT NEEDS:

Example: Paramedic/EMT, Crews, Immobilization Devices, AED, Oxygen, Trauma Bag, IV/Fluid(s), Splints, Rope rescue, Wheeled litter, HAZMAT, Extraction

6. COMMUNICATIONS: Identify State Air/Ground EMS Frequencies and Hospital Contacts as applicable

Function	Channel Name/Number	Receive (RX)	Tone/NAC *	Transmit (TX)	Tone/NAC *
COMMAND					
AIR-TO-GRND					
TACTICAL					

7. CONTINGENCY: Considerations: If primary options fail, what actions can be implemented in conjunction with primary evacuation method? Be thinking ahead.

8. ADDITIONAL INFORMATION: Updates/Changes, etc.

REMEMBER: Confirm ETA's of resources ordered. Act according to your level of training. Be Alert. Keep Calm. Think Clearly. Act Decisively.