

SEWA Team 2



Incident Action Plan

Wednesday

BOLT CREEK

WA-NWS-150

PN P14322 (1522)

FMAG 221-HPS

OPERATION PERIOD


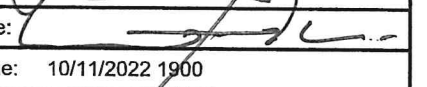
October 12, 2022, 07:00

to

October 13, 2022, 07:00



INCIDENT OBJECTIVES (ICS 202)

1. Incident Name:		2. Operational Period: DAY/NIGHT SHIFT	
BOLT CREEK		Date/Time From: 10/12/2022 0700 WED	Date/Time To: 10/13/2022 0700 THU
3. Objective(s):			
Management Objectives			
<ul style="list-style-type: none"> • Provide for firefighter and public safety using ongoing risk analysis and reasonable mitigation of identified hazards. • Minimize impacts to communities and infrastructure, and minimize acres burned on private lands along Highway 2 corridor. • Maintain and enhance relationships with cooperators, stakeholders, landowners, and communities. • Provide accurate and timely information to the public. • Protect tribal, cultural, aquatic, and wildlife resources and sensitive plant sites by coordinating with Resource Advisors. • Treat each other with dignity and respect and act professionally on the fire and in the community. • Manage costs commensurate with values at risk and update Agency Administrators daily. 			
Control Objectives			
<ul style="list-style-type: none"> • Maintain the fire north of Highway 2 utilizing the existing suppression strategy to stop the fire spread to at-risk values. • To control fire, utilize complete suppression and point protection strategies in areas around structures and values. • Keep fire east of Index-Galena Road (FR63) and west of Beckler Creek Road (FR65). • Continue to monitor the fire in the wilderness, only taking action to maintain a fire within the identified east/west parameters. 			
4. Operational Period Command Emphasis:			
<ul style="list-style-type: none"> • Provide a positive presence to the community and the public impacted by the fire. • Continually use a deliberate analysis of risk as you engage the fire, the safety of personnel is the highest priority. Maintain a good plan within your crews and work areas that provide access to line medical personnel and egress, as necessary. <ul style="list-style-type: none"> • Be aware of values at risk inside and adjacent to the fire perimeter. Engage and suppress fire when safe and employ appropriate tactics for the situation. 			
General Situational Awareness:			
See attached Fire Weather.			
Expect increased traffic on Hwy 2. Use spotters and additional lookouts. Avoid placing personnel or equipment on the roadway unless necessary.			
5. Site Safety Plan Required? Yes <input type="checkbox"/> No <input checked="" type="checkbox"/>			
Approved Site Safety Plan(s) Located			
6. Incident Action Plan (the items checked below are included in this Incident Action Plan):			
<input checked="" type="checkbox"/> ICS 202	<input type="checkbox"/> ICS 207	Other Attachments:	
<input checked="" type="checkbox"/> ICS 203	<input type="checkbox"/> ICS 208		
<input checked="" type="checkbox"/> ICS 204	<input type="checkbox"/> ICS 220		
<input checked="" type="checkbox"/> ICS 205	<input checked="" type="checkbox"/> Map/Chart		
<input checked="" type="checkbox"/> ICS 205A	<input checked="" type="checkbox"/> Weather Forecast/Tides/Currents		
<input checked="" type="checkbox"/> ICS 206			
		<input checked="" type="checkbox"/> INFORMATION MESSAGE	
		<input checked="" type="checkbox"/> ICS 214 - UNIT LOG	
		<input checked="" type="checkbox"/> CODE OF CONDUCT	
7. Prepared by: RYAN SCHARNHORST		Position/Title: PSC3	Signature: 
8. Approved by Incident Commander:		Name: WALTER ESCOBAR	Signature: 
ICS 202		IAP Page	Date/Time: 10/11/2022 1900

FINAL

Page 1 of 1

ORGANIZATION ASSIGNMENT LIST (ICS 203)

1. Incident Name:		2. Operational Period: DAY/NIGHT SHIFT	
BOLT CREEK		Date/Time From: 10/12/2022 0700	Date/Time To: 10/13/2022 0700
		WED	THU
3. Incident Commander(s) and Command Staff:		CAMP SECURITY	
IC/UC	LEONARD JOHNSON 360-581-9672	JAMES GREEN 360-519-9932 (DAY) CHAD RIGGN (NIGHT)	
DEPUTY IC	WALTER ESCOBAR 509-398-1222	7. Operations Section:	
INFORMATION OFFICER	KAREN SARGEANT 509-885-0067 DONALD FERGUSON 541-778-2679	OPS SECTION CHIEF	RYAN NICHOLLS 509-430-1606
INFORMATION OFFICER	JOSIE WILLIAMS (V) 425-647-1872	PLANNING OPS	WES LONG 360-281-9585
LIAISON OFFICER	TIM MCKERN (V) 360-463-2767 DAN SMITH (V) 360-340-4366 (T)	DIVISION/GROUP	A
SAFETY OFFICER	KEN FOSS 253-318-2678 BONNIE ROGERS 509-713-9107 (T)	DIVISION/GROUP	S
4. Agency/Organization Representative(s):		DIVISION/GROUP	P
Agency/Organization	Name	DIVISION/GROUP	BRAD WALLACE 509-899-1057
DNR- NW REGION ADMIN	JAY S GUTHRIE LAURIE BERGVALL (ACT)	DIVISION/GROUP	STRUCTURE
DNR - NW REGION REP	SHANNON CLARK	DIVISION/GROUP	NIGHT
USFS MSF / AA	JEFF MARSZAL BRYAN MCNEIL (ACT)	DIVISION/GROUP	65 ROAD CLOSURE
WA STATE PATROL	LT. DEION GLOVER	7b. Air Operations Branch:	
BNSF	RYAN KUBO	AIR OPS BRANCH DIRECTOR	
SNOHOMISH CO DEM	JARROD DIBBLE	AIR ATTACK SUPERVISOR	
KING CO DEM	ALYSHA KAPLAN	AIR SUPPORT SUPERVISOR	
SNOHOMISH CO SHERIFF	LT. MIKE MARTIN	8. Finance/Administration Section:	
KING CO SHERIFF	CAPT. PETER HORVATH	CHIEF	PAULA JAMES 808-298-1386
SKY VALLEY FD #26	CHIEF ERIC ANDREWS	PTRC	JANET MCINTOSH
SKYKOMISH FD #50	CHIEF JAMES KNISLEY	TIME UNIT	JEANNE CHRISTENSEN
USFS LEAD READ	MATT KENNEY		
5. Planning Section:			
CHIEF	RYAN SCHARNHORST 509-432-1016 PATRICK REID 509-537-6343 (T)		
SCKN/DEMOB	JULIA EVERTA 707-683-6782		
INCIDENT METEOROLOGIST	LISA KRIEDERMAN 240-778-5298		
SITUATION UNIT	DAVID WINTER 509-301-2631		
FIRE BEHAVIOR ANALYST	STEVE ZIEL 541-890-6862		
GIS SPECIALIST	RACHEL ARMSTRONG (V)		
6. Logistics Section:			
CHIEF	CINDY PRESTON 509-607-9724		
GROUND SUPPORT UNIT	KEVIN SELL		
COMMUNICATIONS UNIT	JEFF MINER		
BASE CAMP MGR	CODY TOPPING		
EQUIPMENT	CAMERON ESKEBERG		
MEDICAL UNIT	CHLOE READ 253-569-2933 (T)		
9. Prepared By:	Name: PATRICK REID	Position/Title: PSC3(T)	Signature:
ICS 203	IAP Page	Date/Time: 10/11/2022 1329	



INCIDENT Weather Forecast



FORECAST NO: 25

NAME OF FIRE: Bolt Creek

PREDICTION FOR: 0700 - 0700

UNIT: WA-NDC

SHIFT DATE: Wednesday, October 12, 2022

SIGNED: *Lisa Kriederman*

FORECAST ISSUED: 1700 PDT Oct 11, 2022

Incident Meteorologist

WEATHER DISCUSSION: Upper ridge will take a stronger hold over the region today for a near 10 degree warmup and lowering humidity. While a normal diurnal wind flow pattern is expected, Division A may see downcanyon easterly winds all the way into the early afternoon, bringing warmer/drier conditions there. Slightly enhanced easterly flow will spread across the entire fire tonight, with lowering humidity recoveries. This will set up Thursday to be even warmer and drier.

WEATHER FORECAST:

WEATHER: Thin high clouds in the morning, then clearing. Areas of smoke.

MAX TEMPERATURES: 69 to 74 ridges and upper slopes; 75 to 79 lower slopes and valleys.

MIN HUMIDITY: 30 to 38 percent, lowest values in Div A.

20 FT WINDS:

RIDGETOP - Div S and P: Light and variable, becoming West 3 to 6 mph after 1000.

Div A: East 2 to 4 mph, becoming West 3 to 6 mph after 1300.

SLOPE/VALLEY - Div S and P: East 1 to 3 mph becoming West 2 to 4 mph with gusts to 7 mph after 1000 for Div S, after 1200 for Div P.

Div A: East 2 to 4 mph, with gusts to 7 mph after 1000, becoming West 2 to 4 mph with gusts to 6 mph after 1400.

HAINES INDEX: 5 (Moderate)

INVERSION: Lifting between 1000 and 1200 hrs.

OUTLOOK FOR TONIGHT: Partly cloudy. Low temperatures in the low to mid 50s. Maximum humidity 50 to 65 percent, lowest on upper slopes and ridges. East wind 3 to 6 mph, gusts to 11 mph after midnight.

OUTLOOK FOR THURSDAY:

WEATHER: Mostly sunny. Areas of smoke.

TEMPERATURES: 71 to 76 ridges and upper slopes; 78 to 82 lower slopes and valleys.

HUMIDITY: 27 to 35 percent.

20 FT WINDS:

RIDGETOP - East 3 to 5 mph, with gusts to 8 mph, becoming West 3 to 6 mph with gusts to 10 mph after noon.

SLOPE/VALLEY - East winds 2 to 5 mph until 1100, becoming West 3 to 6 mph with gusts to 12 after noon (strongest along Highway 2).

HAINES INDEX: 5 (Moderate)

INVERSION: Little to no inversion.

EXTRA INFORMATION:

Sunrise: 0720

Sunset: 1823

Fire Behavior Forecast # 03

Name of Incident: Bolt Creek	Administrative Unit: WA-NWS
Date & Time Issued: October 11, 2022 @ 1900	Operational Period: DAY/NIGHT 10/12-13/2022 (0700-0700)
FBAN: Steve Ziel	Signed: /z/ <i>[Signature]</i>

Assumptions: *The next several days include a "warming and drying trend" producing moderate-to-active fire behavior potential across the fire area. We have all the ingredients for a "subtle increase" in fire behavior due to abundant dry fuels, and heavy fuel loading. Expect the most favorable burning conditions between 1300-1800. Persistent burning conditions may be expected in heavy fuels, deep duff, and concentrations. Lower slopes/river areas may remain smoke sheltered through the period with fair-good night time humidity recovery, while upper slope recovery will only be fair. Monitor lower slope and river winds for early morning easterly flow followed by westerly flow, returning to easterly flow overnight. Same smoldering - more creeping and surface fire spread today.*

Weather Summary

*See attached Fire Weather Forecast

Fire Behavior Summary

Fuels in the fire area are primarily composed of *Timber Litter*, and *Timber with Understory*. Primary tree species include mixed sizes of Douglas Fir, Western Hemlock, with scattered cedar. Local timber litter is compact to fluffy. Shrub and understory species include mixed hardwoods, and dog-hair conifer thickets. Large snags and heavy fuel concentrations are common throughout all areas. Live woody fuels are marginally contributing to fire rate of spread and fire intensity. Fuel conditions change by elevation, and aspect. Low crown base height (ladder fuels) and thick moss are present in most of the timbered areas. *Lots of fluffy hardwood leaf litter.*

Today's potential fire behavior will generally consist of "smoldering and creeping" – but may include pockets of surface fire spread with isolated flare ups and occasional torching. Primary spread mechanism is backing on steep slopes, accelerated by rollout. Wind/slope alignment on upper slopes and along drainages may contribute to increased surface fire spread. Areas of backing, and flanking (lateral) spread may increase in the afternoon with warmer/drier conditions, and sunshine. Fire activity may extend into the evening due to low daytime humidity, and easterly wind flow during the late night.

* **Fine fuel moisture= 6%-9%, 1000hr. moisture=12%, Woody fuels 190%, Probability of Ignition-30-50%**

Fuel Type	Rate of Spread	Flame Length	Spotting Distance	20 MPH Gusts FPM
... If your work area includes -	(CH/HR = FPM)	Feet		
Timber Litter (TL5) Heavy	2-3	2		
Timber w/ Understory (TU5) Heavy	4-6	4-5		
Timber w/ Understory (TU2) Moderate	5-6	2-3		

Specific Assignments:

- Div. A** – Monitor fire activity on lower slopes for flare-ups. Expect continued activity in private parcel (Sec. 26) north of Skykomish with river influence winds. Potential slope reversal near the section 1 and 6 line crossed 6510 Rd.
- Div. S** – Monitor flanking/backing on Heybrook Ridge and 6022 Rd. (Sec. 26), and increased activity in lower Barclay Creek (Sec. 35).
- Div. P** – Monitor down canyon flow in morning, up canyon flow during the day. Expect rolling materials on steep slopes above Hwy. 2.

Air Operations: May be impacted by morning smoke inversion until 1100, then hazy with trapped smoke in deep valleys.

Safety

Warming and drying will occur in the fire area for the next several days – observe the rate of drying, and the effect on fire behavior – watch for increasing smoke volume, smoke color, location of fire activity. Peak burning conditions will occur in the late afternoon. Compare morning, afternoon, and early evening burning conditions – relate changing weather (temperature, relative humidity, wind speed and direction) to fire activity – we are all students of fire. Anticipate how fire behavior will change over the course of the day, week, season.....

FINE FUELS are VERY responsive to the effects of temperature and humidity...monitor your conditions. Anticipate current conditions to continue for the next several days.....anticipate fire behavior before you observe it, anticipate your actions before need to act. **Remember** : dry fine fuels + wind = rapid rate of spread ; timber litter + wind = high intensity fire with torching and spotting; moss + ladder fuels= torching and spotting.

**Today's Fire Behavior Forecast contains 679 words (+82 from previous) written for your situational awareness.*

IAP

Bolt Creek

WA-NWS-000150

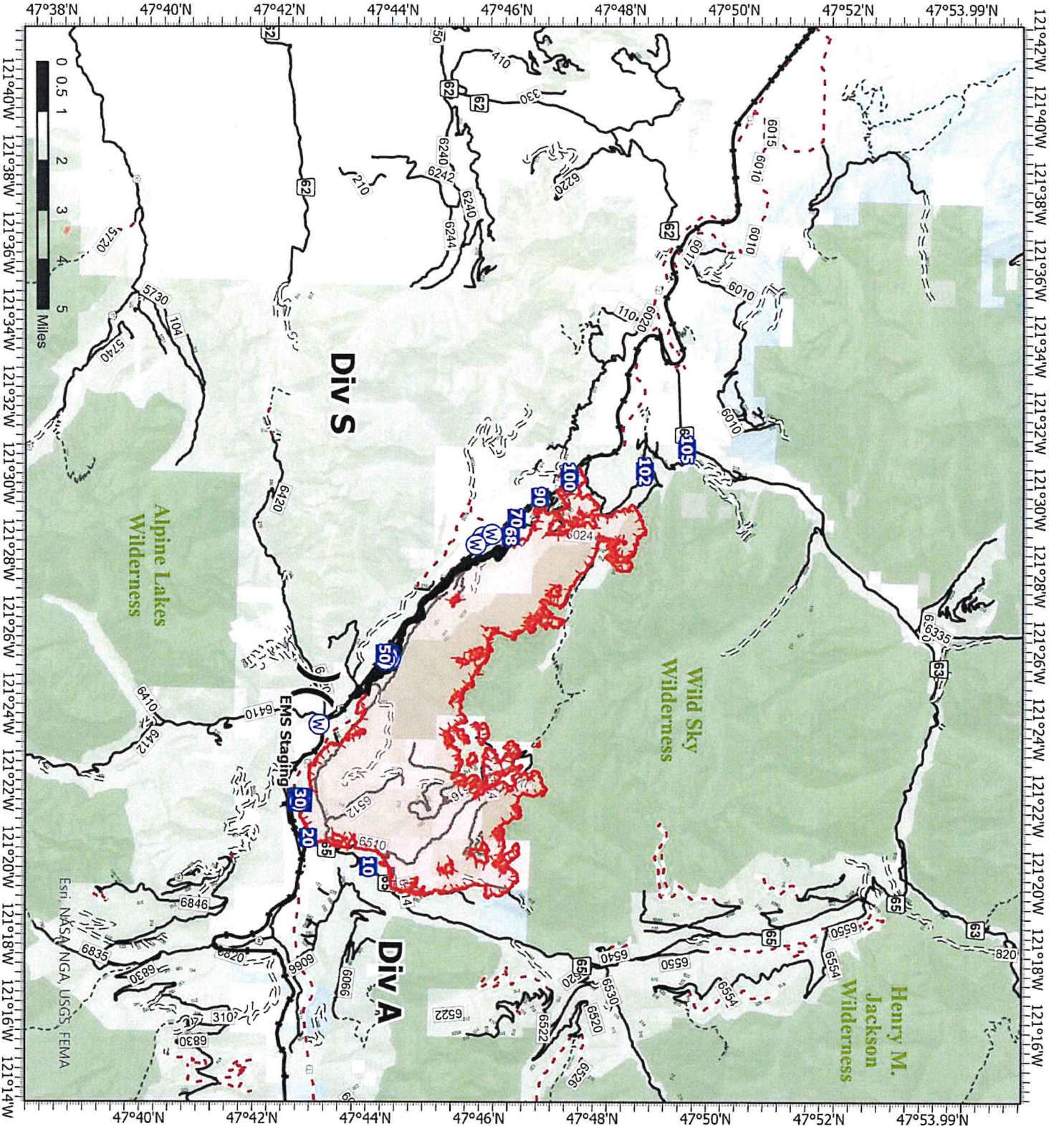
10/12/2022

13,503 acres at 10/09/2022 @2142

- X Division Break
- Medical
- Drop Point
- Water Source
- Contained
- Uncontained
- Bureau of Land Management (BLM)
- State
- US Forest Service (USFS)
- Private
- Undetermined
- Railroads
- Open Roads
- Closed Roads
- Decommissioned Roads
- Decommissioned Roads
- Trail
- Wilderness



Map updated:
10/11/2022 2033



Transportation

Bolt Creek

WA-NWS-000150

10/04/2022

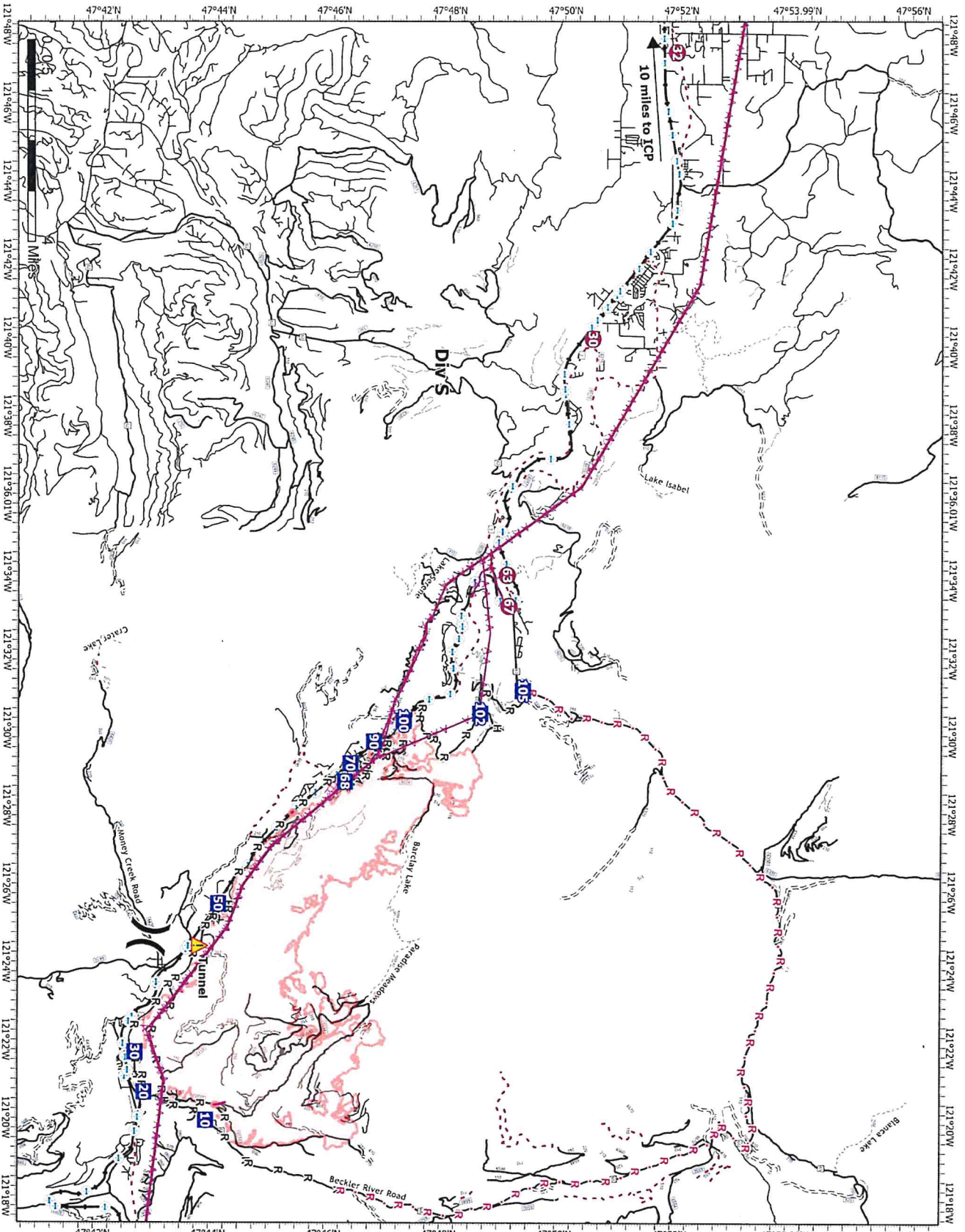
13,503 acres at 10/09/2022 @2142

- Helispot
- × Division Break
- Drop Point
- ▲ Tunnel
- ⊗ Completed Burnout
- ⊗ Completed Dozer Line
- M Completed Fuel Break
- H Completed Hand Line
- M Completed Mixed Construction Line
- R Completed Road as Line
- Planned Dozer Line
- Planned Road as Line
- Other
- Aerial Hazard
- Retardant Drop
- Secondary HWY
- Local Road
- 4WD
- Trail
- Runway
- Bridges
- Railroads
- Open Roads
- Closed Roads
- Decommissioned Roads
- Decommissioned Roads



Map Updated
10/11/2022 2:35:5

SE WASHINGTON
INTEGRATED TEAM



Division/Group Assignment List (ICS 204 WF)
Controlled Unclassified Information//Basic

1. Incident Name:			3.			
BOLT CREEK			Branch:		Division/Group	
2. Operational Period:			DAY/NIGHT SHIFT			
Date/Time From: 10/12/2022 0700		WED	Date/Time To: 10/13/2022 0700		THU	
			A			
4. Operations Personnel						
OPERATIONS CHIEF		RYAN NICHOLLS 509-430-1606		PLANNING OPS		WES LONG 360-281-9585
FIELD OPS				DIVISION/GROUP SUPERVISOR		KENNETH JOHNSON 509-496-5452
5. Resources Assigned this Period						
Strike Team / Task Force / Resource Designator		LWD	Leader	Number Persons	Drop Off PT./Time	Pick Up PT./Time
O-193 TFL JOTHAN MCGAUGHEY 360-595-3801		10/13		1	ICP/0700	ICP/1900
O-185 STEN ETRINGER (T) *** 360-319-2775		10/14		1	ICP/0700	ICP/1900
C-17 CR2I MT BAKER IA		10/18	ERIK USHER	20	ICP/0700	ICP/1900
E-167 ENG5 WA-NWS 5202 ***		10/13	ISAAC DUGGER	4	ICP/0700	ICP/1900
E-168 ENG5 WA-OLS 1201		10/13	FELIPE BARRAGAN	4	ICP/0700	ICP/1900
E-169 ENG5 WA-NWS 5101		10/13	DOUGLAS LANNING	4	ICP/0700	ICP/1900
E-170 ENG5 WA-PCS 2300		10/13	GRANT EASTHAM	3	ICP/0700	ICP/1900
E-143 WTS2 SKYKOMISH FIRE		10/13	ROBERT CAMPBELL	1	ICP/0700	ICP/1900
O-224 STEN BRIAN WESEMANN 360-749-6218		10/22		1	ICP/0700	ICP/1900
E-130 ENGB LATE SUMMERS WILDFIRE		10/22	JENSEN BOVEE	3	ICP/0700	ICP/1900
E-131 ENG MEADOW WILDFIRE		10/12	DAMIEN RAMON	3	ICP/0700	ICP/1900
E-133 ENG RAINIER WILDFIRE		10/12	BRICYN ABDUL	3	ICP/0700	ICP/1900
E-134 ENGB NORTHRIDGE WILDFIRE		10/24	BRITTANY NORDHAGEN	3	ICP/0700	ICP/1900
E-135 ENGB RAINIER WILDFIRE		10/20	MICHAEL SUTTON	3	ICP/0700	ICP/1900
O-145 SOFR ANDY MURRIN 541-784-7774		10/13		1	ICP/0700	ICP/1900
O-194 FMOD MOUNTAIN WEST WILD FIRE LLC		10/14	MATTHEW J HOLZNAGAL	2	ICP/0700	ICP/1900
8. Division/Group Communication Summary						
Function	Channel	RX Frequency N/W	RX Tone/NAC	TX Frequency N/W	TX Tone/NAC	Mode
TACTICAL	1	151.3100	118.8	151.3100	118.8	A
COMMAND	7	159.4125	118.8	151.4450	118.8	A
COMMAND	8	159.3750	118.8	151.3250	118.8	A
AIR TO GROUND	12	159.2700	103.5	159.2700	103.5	A
AIR TO GROUND	13	151.2875	103.5	151.2875	103.5	A
AIR GUARD	16	168.6250	000.0	168.6250	110.9	A
9. Prepared By (Resource Unit Leader)			Approved By (Planning Section Chief)		Date	Time
PATRICK REID			RYAN SCHARNHORST		10/11/2022	1329

Division/Group Assignment List (ICS 204 WF)
Controlled Unclassified Information//Basic

1. Incident Name:				3.			
BOLT CREEK				Branch:		Division/Group	
2. Operational Period:				DAY/NIGHT SHIFT			
Date/Time From:		Date/Time To:				A	
10/12/2022 0700		WED		10/13/2022 0700		THU	
4. Operations Personnel							
OPERATIONS CHIEF		RYAN NICHOLLS 509-430-1606		PLANNING OPS		WES LONG 360-281-9585	
FIELD OPS				DIVISION/GROUP SUPERVISOR		KENNETH JOHNSON 509-496-5452	
5. Resources Assigned this Period							
Strike Team / Task Force / Resource Designator		LWD	Leader	Number Persons	Drop Off PT./Time	Pick Up PT./Time	
E-149 DOZ2 BURGESS LOGGING BOB LLOYD		10/23	WILLIAM BURGESS	2	ICP/0700	ICP/1900	
O-222 EMPF REMINGTON BECKER 360-903-8612		10/20		1	ICP/0700	ICP/1900	
O-127.18 EMTF JASON LUKER 425-350-3377		10/12		1	ICP/0700	ICP/1900	
6. Control Operations/Work Assignments:							
<ul style="list-style-type: none"> • Prevent fire from crossing Highway 2. • Patrol primary control lines. • Provide point protection around structures. • Develop the fuel mitigation plan for the division., • Mop up in the 6510 Road area. 							
7. Special Instructions:							
<p>*** Maintain Initial Attack (IA) availability.</p> <ul style="list-style-type: none"> • Assess suppression repair needs as noted in the Field Maps and Avenza Maps input. • Text the 14:00 weather observations to IMET at 240-778-5298 and turn in your hour weather observations at the end of your shift to the IMET. • Special Instructions for Highway 2: In the event of trees or debris falling on the highway and interrupting traffic notify WSDOT. • Block the roadway using fire apparatus and try to mitigate the hazard if possible, only do so with an emergency vehicle that has emergency warning lights. • Make sure leaf litter is clear of control lines. • Provide traffic control along the Skykomish bridge adjacent to the dip site. 							
8. Division/Group Communication Summary							
Function	Channel	RX Frequency N/W	RX Tone/NAC	TX Frequency N/W	TX Tone/NAC	Mode	
TACTICAL	1	151.3100	118.8	151.3100	118.8	A	
COMMAND	7	159.4125	118.8	151.4450	118.8	A	
COMMAND	8	159.3750	118.8	151.3250	118.8	A	
AIR TO GROUND	12	159.2700	103.5	159.2700	103.5	A	
AIR TO GROUND	13	151.2875	103.5	151.2875	103.5	A	
AIR GUARD	16	168.6250	000.0	168.6250	110.9	A	
9. Prepared By (Resource Unit Leader)			Approved By (Planning Section Chief)			Date	Time
PATRICK REID			RYAN SCHARNHORST			10/11/2022	1329

Division/Group Assignment List (ICS 204 WF)

Controlled Unclassified Information//Basic

1. Incident Name:			3.			
BOLT CREEK			Branch:		Division/Group	
2. Operational Period:			DAY/NIGHT SHIFT			
Date/Time From: 10/12/2022 0700		WED	Date/Time To: 10/13/2022 0700		THU	
			P			
4. Operations Personnel						
OPERATIONS CHIEF		RYAN NICHOLLS 509-430-1606		DIVISION/GROUP SUPERVISOR		DAVID BIBE
AIR ATTACK SUPERVISOR				PLANNING OPS		WES LONG
5. Resources Assigned this Period						
Strike Team / Task Force / Resource Designator		LWD	Leader	Number Persons	Drop Off PT./Time	Pick Up PT./Time
O-251 STEN CORY BERGSTROM (T)				1	ICP/0700	ICP/1900
C-18 CR21 - NORTH PACIFIC FORESTRY INC		10/22	JOSE PEREZ ARELLANO	20	ICP/0700	ICP/1900
O-211 FMOD DBA BAILEY LOGGING		10/18	BEN A NEWMAN	2	ICP/0700	ICP/1900
E-179 CHP2 CHPW- ROAD HOME, INC.		10/20	ANDREW GIBBS	3	ICP/0700	ICP/1900
6. Control Operations/Work Assignments:						
<ul style="list-style-type: none"> Prevent fire from crossing Highway 2 and develop fuel mitigation plans along 6510 Road Patrol primary control lines. Provide point protection around any structures within the Division boundaries. Mop up any areas in the division that need to meet objectives. 						
7. Special Instructions:						
<ul style="list-style-type: none"> Assess suppression repair needs as noted on the Field Maps and Avenza Maps input. Text the 14:00 weather observations to IMET at 240-778-5298 and turn in your hour weather observations at the end of your shift to IMET. Special Instructions for Highway 2: In the event of trees or debris falling on the highway and interrupting traffic notify WSDOT. <ul style="list-style-type: none"> Block the roadway using fire apparatus and try to mitigate the hazard if possible, only do so with an emergency vehicle that has emergency warning lights. Make sure leaf litter is clear of control lines. 						
8. Division/Group Communication Summary						
Function	Channel	RX Frequency N/W	RX Tone/NAC	TX Frequency N/W	TX Tone/NAC	Mode
TACTICAL	3	151.2125	118.8	151.2125	118.8	A
COMMAND	7	159.4125	118.8	151.4450	118.8	A
COMMAND	8	159.3750	118.8	151.3250	118.8	A
AIR TO GROUND	12	159.2700	103.5	159.2700	103.5	A
AIR TO GROUND	13	151.2875	103.5	151.2875	103.5	A
AIR GUARD	16	168.6250	000.0	168.6250	110.9	A
9. Prepared By (Resource Unit Leader)			Approved By (Planning Section Chief)		Date	Time
PATRICK REID			RYAN SCHARNHORST		10/11/2022	2000


Division/Group Assignment List (ICS 204 WF)
Controlled Unclassified Information//Basic

1. Incident Name:			3.			
BOLT CREEK			Branch:		Division/Group	
2. Operational Period:			DAY/NIGHT SHIFT			
Date/Time From: 10/12/2022 0700		WED	Date/Time To: 10/13/2022 0700		THU	
			S			
4. Operations Personnel						
OPERATIONS CHIEF		RYAN NICHOLLS 509-430-1606		PLANNING OPS		WES LONG 360-281-9585
DIVISION/GROUP SUPERVISOR		BENJAMIN J LIPPERT 509-675-6362				
5. Resources Assigned this Period						
Strike Team / Task Force / Resource Designator		LWD	Leader	Number Persons	Drop Off PT./Time	Pick Up PT./Time
O-206.19 TFLD MICHAEL NICK 509-563-9188		10/19		1	ICP/0700	ICP/1900
O-225 TFLD SHAWN ONGERS (T) 509-386-3900		10/15		1	ICP/0700	ICP/1900
C-19 CR21 - GRAYBACK FORESTRY, INC.		10/23	TIMOTHY BREWER	20	ICP/0700	ICP/1900
O-219 FELB(T) DANIEL OAKLAND 401-258-4702		10/18		1	ICP/0700	ICP/1900
E-150 CHP2 BROTHERS FIRE		10/19	SHANE MUSTARD	3	ICP/0700	ICP/1900
O-165 STEN GREG SEALS *** 360-480-9485		10/14		1	ICP/0700	ICP/1900
E-136 ENG6 - LIBERTY WILDFIRE, INC.		10/21	EDWARD KENNEY	3	ICP/0700	ICP/1900
E-139 ENG5 - BLACKSTONE FORESTRY		10/20	CASEY FOX	3	ICP/0700	ICP/1900
E-137 ENG3 - BAILEY ENTERPRISES, L.L.C.		10/15	GREG BAILEY	3	ICP/0700	ICP/0700
E-138 ENG4 - CHEWACK WILDFIRE INC		10/21	ANDREW GRAVES	3	ICP/0700	ICP/0700
E-176 ENG5 - OSPREY WILDFIRE, LLC		10/19	DUSTYN WILLIAMS	3	ICP/0700	ICP/1900
E-174 WTS2 - T2 - SNOHOMISH FD26 - T53		10/20	TYLER LEE KNUDSON	1	ICP/0700	ICP/0700
O-155 EMPF ANGEL THORSVOLD 541-588-2314		10/14		1	ICP/0700	ICP/1900
O-172 EMTB CHRISTY FIELD 541-399-6943		10/18		1	ICP/0700	ICP/1900
E-185 AMB2 "AMBO 2" 360-620-6558		10/25	TREVOR STANELY	2	ICP/0700	ICP/1900
6. Control Operations/Work Assignments:						
8. Division/Group Communication Summary						
Function	Channel	RX Frequency N/W	RX Tone/NAC	TX Frequency N/W	TX Tone/NAC	Mode
TACTICAL	2	151.3400	118.8	151.3400	118.8	A
COMMAND	7	159.4125	118.8	151.4450	118.8	A
COMMAND	8	159.3750	118.8	151.3250	118.8	A
AIR TO GROUND	12	159.2700	103.5	159.2700	103.5	A
AIR TO GROUND	13	151.2875	103.5	151.2875	103.5	A
AIR GUARD	16	168.6250	000.0	168.6250	110.9	A
9. Prepared By (Resource Unit Leader)			Approved By (Planning Section Chief)		Date	Time
PATRICK REID			RYAN SCHARNHORST		10/11/2022	1329

Division/Group Assignment List (ICS 204 WF)
Controlled Unclassified Information//Basic

1. Incident Name:				3.		
BOLT CREEK				Branch:	Division/Group	
2. Operational Period: DAY/NIGHT SHIFT						
Date/Time From: 10/12/2022 0700 WED		Date/Time To: 10/13/2022 0700 THU		S		
4. Operations Personnel						
OPERATIONS CHIEF		RYAN NICHOLLS 509-430-1606		PLANNING OPS		WES LONG 360-281-9585
DIVISION/GROUP SUPERVISOR		BENJAMIN J LIPPERT 509-675-6362				
6. Control Operations/Work Assignments:						
<ul style="list-style-type: none"> • Structure and infrastructure protection. • Prevent fire from crossing Highway 2 to the west. • Patrol primary control lines. • Provide point protection around structures 						
7. Special Instructions:						
<p>*** Maintain Initial Attack (IA) availability.</p> <ul style="list-style-type: none"> • Ambulance (E-185), "AMBO2", is staged at Money Creek. • Continue chipping and road preparation on 6022 Road. • Improve spur 120 off of 6022 Road. • Reassess current indirect line placement for effectiveness. • Special Instructions for the Highway: In the event of trees or debris falling on the highway and interrupting traffic notify WSDOT. Block the road lane using fire apparatus and try to mitigate the hazard if possible. • Assess suppression repair needs that need to be noted on the field maps and Avenza Maps input. • Text the 14:00 weather observations to IMET at 240-778-5298 and turn in your hour weather observations at the end of your shift to IMET. 						
8. Division/Group Communication Summary						
Function	Channel	RX Frequency N/W	RX Tone/NAC	TX Frequency N/W	TX Tone/NAC	Mode
TACTICAL	2	151.3400	118.8	151.3400	118.8	A
COMMAND	7	159.4125	118.8	151.4450	118.8	A
COMMAND	8	159.3750	118.8	151.3250	118.8	A
AIR TO GROUND	12	159.2700	103.5	159.2700	103.5	A
AIR TO GROUND	13	151.2875	103.5	151.2875	103.5	A
AIR GUARD	16	168.6250	000.0	168.6250	110.9	A
9. Prepared By (Resource Unit Leader)			Approved By (Planning Section Chief)		Date	Time
PATRICK REID			RYAN SCHARNHORST		10/11/2022	1329

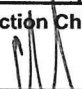
Division/Group Assignment List (ICS 204 WF)
Controlled Unclassified Information//Basic

1. Incident Name:				3.		
BOLT CREEK				Branch:		Division/Group
2. Operational Period:				STRUCTURE		
DAY/NIGHT SHIFT						
Date/Time From: 10/12/2022 0700		Date/Time To: 10/13/2022 0700				
WED		THU				
4. Operations Personnel						
OPERATIONS CHIEF		RYAN NICHOLLS 509-430-1606		DIVISION/GROUP SUPERVISOR		AARON BIBE 509-591-8620
PLANNING OPS		WES LONG 360-281-9585				
5. Resources Assigned this Period						
Strike Team / Task Force / Resource Designator		LWD	Leader	Number Persons	Drop Off PT./Time	Pick Up PT./Time
O-197 TFLD KENNETH JONES (T) 509-683-2092		10/16		1	ICP/0700	ICP/1900
E-177 ENG5 LIBERTY WILDFIRE		10/24	KATHLEEN CALVIN	3	ICP/0700	ICP/1900
E-175 ENG5 - E8142 - WA-SPS		10/21	REECE JOHNSON	3	ICP/0700	ICP/1900
E-183 ENG5 LL MEADOW WILDFIRE		10/21	WESLEY JAMES	3	ICP/0700	ICP/1900
E-180 ENG5 WA-OLS		10/23	REGGIE BUATTNOR 360-670-7320	3	ICP/0700	ICP/1900
E-182 ENG5 METHOW RIVER WILD		10/23	JOHN NEUNEKOR 509-409-1485	3	ICP/0700	ICP/1900
E-184 WTS2		10/24	JAY FISHER	1	ICP/0700	ICP/1900
6. Control Operations/Work Assignments:						
<ul style="list-style-type: none"> • Mop up around all structures as needed. • Maintain current protection along HWY 2 corridor. • Patrol for spot fires. • Support fuel mitigation operations around structures in all Divisions. 						
7. Special Instructions:						
<ul style="list-style-type: none"> • Maintain awareness for construction traffic along 63 Road. • Validate structure protection plan. • Implement the structure protection plan at Haybrook Lookout if the fire crosses 6022 Road. 						
8. Division/Group Communication Summary						
Function	Channel	RX Frequency N/W	RX Tone/NAC	TX Frequency N/W	TX Tone/NAC	Mode
TACTICAL	5	153.8300	000.0	153.8300	000.0	A
COMMAND	7	159.4125	118.8	151.4450	118.8	A
COMMAND	8	159.3750	118.8	151.3250	118.8	A
AIR TO GROUND	12	159.2700	103.5	159.2700	103.5	A
AIR TO GROUND	13	151.2875	103.5	151.2875	103.5	A
AIR GUARD	16	168.6250	000.0	168.6250	110.9	A
9. Prepared By (Resource Unit Leader)			Approved By (Planning Section Chief)		Date	Time
PATRICK REID			RYAN SCHARNHORST 		10/11/2022	1329

Division/Group Assignment List (ICS 204 WF)
Controlled Unclassified Information//Basic

1. Incident Name:				3.		
BOLT CREEK				Branch:		Division/Group
2. Operational Period: DAY/NIGHT SHIFT				NIGHT SHIFT		
Date/Time From: 10/12/2022 0700 WED		Date/Time To: 10/13/2022 0700 THU				
4. Operations Personnel						
OPERATIONS CHIEF		RYAN NICHOLLS 509-430-1606		PLANNING OPS		WES LONG 360-281-9585
DIVISION/GROUP SUPERVISOR		DJ GOLDSMITH 509-951-8755				
5. Resources Assigned this Period						
Strike Team / Task Force / Resource Designator		LWD	Leader	Number Persons	Drop Off PT./Time	Pick Up PT./Time
O-168 STEN FRANK DAHLQUIST		10/14	425-359-3055	1	ICP/1900	ICP/0700
E-140 ENG5 SNO COUNTY FD #15-BR60		10/20	DALTON BAUNSGARD	2	ICP/1900	ICP/0700
E-141 ENG5 SNO COUNTY FD #22 BR68		10/21	TYLER BYRD	2	ICP/1900	ICP/0700
E-181 ENG5 WA-OLS		10/22	BLAKE MANN 360-640-3650	4	ICP/1900	ICP/0700
E-188 ENG5 - SNOHOMISH FD16		10/22	JADON WYATT NANNERY	3	ICP/1900	ICP/0700
E-189 ENG6 - SNOHOMISH FD26		10/22	NOLAN JON HEISEL	2	ICP/1900	ICP/0700
E-178 AMB2 'AMBO1' 360-219-7608		10/19	JOSHUA CHISNELL	2	ICP/1900	ICP/0700
6. Control Operations/Work Assignments:						
<ul style="list-style-type: none"> • Structure and infrastructure protection. • Prevent fire from crossing Highway 2 to the south and west. • Patrol primary control lines. • Provide point protection around structures 						
7. Special Instructions:						
<ul style="list-style-type: none"> • Provide updates and IWI directly to the COML section and at night, call Planning Ops Wes Long at 360-281-9585. • Provide night watch for Helo 0NW at Skykomish airport. Report as necessary to Communications 360-259-7651. 						
8. Division/Group Communication Summary						
Function	Channel	RX Frequency N/W	RX Tone/NAC	TX Frequency N/W	TX Tone/NAC	Mode
TACTICAL	1	151.3100	118.8	151.3100	118.8	A
COMMAND	7	159.4125	118.8	151.4450	118.8	A
COMMAND	8	159.3750	118.8	151.3250	118.8	A
AIR TO GROUND	12	159.2700	103.5	159.2700	103.5	A
AIR TO GROUND	13	151.2875	103.5	151.2875	103.5	A
AIR GUARD	16	168.6250	000.0	168.6250	110.9	A
9. Prepared By (Resource Unit Leader)			Approved By (Planning Section Chief)		Date	Time
PATRICK REID			RYAN SCHARNHORST		10/11/2022	1329

Division/Group Assignment List (ICS 204 WF)
 Controlled Unclassified Information//Basic

1. Incident Name:			3.			
BOLT CREEK			Branch:		Division/Group	
2. Operational Period:			DAY/NIGHT SHIFT			
Date/Time From: 10/12/2022 0700 WED		Date/Time To: 10/13/2022 0700 THU		65 ROAD CLOSURE		
4. Operations Personnel						
OPERATIONS CHIEF		RYAN NICHOLLS 509-430-1606		DIVISION SUPERVISOR		BRIAN MCNEIL 425-365-6067
PLANNING OPS		WES LONG 360-281-9585				
5. Resources Assigned this Period						
Strike Team / Task Force / Resource Designator		LWD	Leader	Number Persons	Drop Off PT./Time	Pick Up PT./Time
ROAD SECURITY (GUARD)		10/22	SARAH LARSEN	1	RD 65 /0600	RD 65/2200
ROAD SECURITY (GUARD)		10/22	AVERY PAYNE	1	RD65/0600	RD 65/2200
ROAD SECURITY (GUARD)		10/22	FRANK ROSCIGNO	1	RD 65/0600	RD 65/2200
6. Control Operations/Work Assignments:						
<ul style="list-style-type: none"> USFS will provide security to the 65 Road closure. Assist fire resources working in the area with access around the road closure and direct pubic traffic past the road closure location. 						
7. Special Instructions:						
If you need access when working in the 65 Road area, or if you have any traffic issues, contact the Forest Service's Guards on Command Channel 8 for assistance.						
8. Division/Group Communication Summary						
Function	Channel	RX Frequency N/W	RX Tone/NAC	TX Frequency N/W	TX Tone/NAC	Mode
COMMAND	8	159.3570	118.8	151.3250	118.8	A
TACTICAL	1	151.3100	118.8	151.3100	118.8	A
9. Prepared By (Resource Unit Leader)			Approved By (Planning Section Chief)		Date	Time
PATRICK REID			RYAN SCHARNHORST 		10/11/2022	1329

INCIDENT RADIO COMMUNICATIONS PLAN (ICS 205)

Controlled Unclassified Information//Basic

1. Incident Name:		2. Date/Time Prepared:		3. Operational Period: DAY/NIGHT SHIFT						
BOLT CREEK		Date: 10/11/2022 Time: 1329	Date/Time From: 10/12/2022 0700	WED	Date/Time To: 10/13/2022 0700	THU				
4. Basic Radio Channel Use:										
Zone Group	Ch #	Function	Channel Name/Trunked Radio System Talkgroup	Assignment	RX Freq	RX Tone/NAC	TX Freq	TX Tone/NAC	Mode (A, D, or M)	Remarks
	1	TACTICAL	TAC 1	DIV A	151.3100	118.8	151.3100	118.8	A	
	2	TACTICAL	TAC 2	DIV S	151.3400	118.8	151.3400	118.8	A	
	3	TACTICAL	TAC 3	DIV P	151.2125	118.8	151.2125	118.8	A	
	4	TACTICAL	DNR COM	UNASSIGNED	151.4150	103.5	151.4150	103.5	A	IA USE ONLY
	5	TACTICAL	REDNET	STRUCTURE	153.8300	000.0	153.8300	000.0	A	
	6	TACTICAL	FS FTAC	UNASSIGNED	168.5625	000.0	168.5625	000.0	A	IA USE ONLY
	7	COMMAND	CMD 7	ALL DIVS	159.4125	118.8	151.4450	118.8	A	LOCATED NORTH OF INDEX LINKED TO CMD 8
	8	COMMAND	CMD 8	ALL DIVS	159.3750	118.8	151.3250	118.8	A	LOCATED ON SOBIESKI LINKED TO CMD 7
	9	COMMAND	SNOHOMIS	FOREST NET	159.4350	141.3	151.1900	141.3	A	DISPATCH CALL SIGN "NW DISPATCH" IA USE ONLY
	10	COMMAND	SULTAN	FOREST NET	159.2475	141.3	151.1825	141.3	A	DISPATCH CALL SIGN "NW DISPATCH" IA USE ONLY
	11	COMMAND	SOBIESKI	FOREST NET	169.5750	146.2	164.9625	156.7	A	DISPATCH CALL SIGN "PUGET SOUND" IA USE ONLY
	12	AIR TO GROUND	DNR A/G1	ALL DIVS	159.2700	103.5	159.2700	103.5	A	PRIMARY A/G
	13	AIR TO GROUND	DNR A/G2	ALL DIVS	151.2875	103.5	151.2875	103.5	A	SECONDARY A/G
	14	AIR TO GROUND	A/G 41	UNASSIGNED	167.4750	000.0	167.4750	000.0	A	
	15	AIR TO GROUND	VMED 29	MEDEVAC	155.3475	156.7	155.3475	156.7	A	MEDEVAC
	16	AIR GUARD	AIRGUARD	EMERGENCY USE	168.6250	000.0	168.6250	110.9	A	EMERGENCY USE
5. Special Instructions:										
6. Prepared By		(Communications Unit Leader) <td colspan="2">Name: JEFF MINER <td colspan="2">Signature: <i>Jeff Miner</i></td> <td colspan="2">Date/Time: 10/11/2022 1329</td> <td></td> </td>		Name: JEFF MINER <td colspan="2">Signature: <i>Jeff Miner</i></td> <td colspan="2">Date/Time: 10/11/2022 1329</td> <td></td>		Signature: <i>Jeff Miner</i>		Date/Time: 10/11/2022 1329		
ICS 205		IAP Page		Controlled Unclassified Information//Basic		FINAL				

INCIDENT: Bolt Creek

DATE: 10/12/2022 TIME: Day/Night

Major Hazards & Risks: Driving, Working Along Roadway, Hazard Trees, Steep Terrain, Rolling Material, Rugged Access, Cumulative Fatigue, Heavy Equipment Operations

Combating Fatigue

- Take longer periods of rest/recovery if possible.
- Avoid energy drinks.
- Provide periodic rest breaks to allow physical and mental recovery.
- Alternate between heavy and light tasks.
- Eat well-balanced meals regularly, with energy supplements during periods of high exertion.
- Maintain hydration and electrolytes.
- Maintain good personal hygiene.
- Maintain high standards of physical fitness and work capacity.
- In extreme cases, personnel may need to be relieved of their duties.
- Ear plugs are available to help alleviate the noises around camp during sleeping hours.



Backing Apparatus: Always use a backer whether you are on the fireline or in camp. It takes just a moment to put measures into place to avoid an accident.

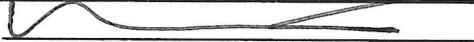
Prepared by: Bonnie Rogers SOFR-T

1. Incident Name: BOLT CREEK
 ICP – Evergreen State Fairgrounds

2. Operational Period: Date: 10/12/22 - 10/13/22
 From: 0700-0700

3. Basic Local Communications Information:

Name	Incident Assigned Position	Cell Phone Number / Email Address
Communications Unit		360-259-7651
Finance Section		360-481-7668
Information Officer		360-259-5006
Medical Unit		360-259-6737
Ordering Unit		360-481-0718
Planning Section		360-481-5153
Safety Officer		360-259-9535

4. Prepared by: Name: Ryan Scharnhorst Position/Title: PSC3 Signature: 

--	--	--

Bolt Creek Fire

Logistics Information

Base Camp Operating

Quiet Hours	2200 – 0500
Supply	0600 – 2100
Food	0600 - 0900 and 1800 – 2100
Medical Tent	0600 – 2100 (available 24 hours – after posted hours, please call the number posted on the medical Yurt.)
Refer Van	0600 – 2000 for lunch and ice pick-ups
Showers	05:30 – 1200 and 1500 – 2200
Supply	0600 – 2100
Laundry	Drop off clothes to Supply by <u>0830</u> hrs. Expect a 48-hour turn-around. Pick-up for laundry will be at Supply.
Supply Orders	All supply orders need to be into the logistics by <u>1800</u> hrs. for Next-day delivery.

NOTE: All equipment and Overhead request have a 48-hour lag time.

Bolt Creek Fire Information

Fire Information Line 360-370-4170

Email: 2022.boltcreek@firenet.gov

*These are for public information AND to email photos & videos to us!
Text your fire photos and short videos to 360-259-5006*

Facebook Page

[Bolt Creek Fire Information | Facebook](#)

Inciweb

<https://inciweb.nwcg.gov/incident/8417/>

Did you lose or find something? The PIO booth in the corner of the Incident Command Post is the place for Lost and Found. Be prepared to describe what you are looking for. If you're turning something in, please give us time and location of what you found.

Need to mail something? Drop it by the PIO booth and we will drop it in a mailbox for you.

Code of Conduct Incident Personnel



Each individual on this incident is responsible for:

- ☞ Being *ready and able* to perform their assigned duties effectively.
- ☞ Conducting themselves in a manner that treats people with dignity, equality, courtesy, and respect.
- ☞ Abiding by agency ethics and conduct regulations.
- ☞ Reporting any harassment or other inappropriate behavior.

Each individual of this incident has the right to:

- ☞ Work in an environment characterized by safe work practices.
- ☞ Work in a fair and harassment free environment.
- ☞ Say "No" to unwelcome advances or requests for favors.
- ☞ File complaints or grievances through appropriate avenues.

There is zero tolerance for inappropriate behavior while assigned to the incident, including:

- ☞ Illegal drug use
- ☞ Alcohol use
- ☞ Unsafe work practices and activities
- ☞ Discrimination
- ☞ Sexual harassment
- ☞ Fighting, threatening, and abusive behaviors
- ☞ Using social media and electronic communication devices for personal business while engaged in fire assignment duties.
- ☞ Other violations of Fire Service, Washington DNR, and Federal agency standards of conduct.

Failure to adhere to the Code of Conduct could result in dismissal from the incident, with notification to your home unit.

The public expects our best efforts; they see us as professionals in what we say and do. Let's continue to show them we are!

DNR/DOC Camp Crew Guidelines	1. Incident Name	2. Date Prepared	3. Time Prepared
-------------------------------------	------------------	------------------	------------------

ALL PERSONNEL WORKING AROUND OFFENDERS/DNR KITCHENS

This message is from the Department of Natural Resources and Department of Corrections.

- ▶ No person shall be allowed to carry firearms in the area where offenders are working. It is acceptable to secure weapons in vehicles while entering into the working vicinity of offenders.
- ▶ Do not give or take anything from an offender. Offenders are identified by red ball caps or red hard hats.
- ▶ Do NOT take photos or interview offenders without approval from the DNR Inmate Liaison.
- ▶ Do not do any favors for offenders. (Examples: passing on a message, giving tobacco, asking for change, mailing a letter, using a phone. The most innocent act/favor can have consequences that could affect an offender for years.)
- ▶ Report any suspicious act to the Supervisor, DOC Staff or Inmate Liaison.
- ▶ Offenders are not allowed to use tobacco products. Do not use tobacco products in or around kitchen area.
- ▶ Offenders on DNR Crews have committed various crimes. They ARE considered minimum level custody.
- ▶ Treat Offenders with respect, but don't get personal. Practices the correctional distance...don't get personal. Offenders generally feel good with being part of the fire suppression effort; treat them with the same respect and dignity as other fire fighters but, DON'T GET PERSONAL.
- ▶ Offenders are trained in their job assignments and their work ethics. They are held accountable for their job performance and their behavior.
- ▶ Acknowledge crews for a job well done; offenders do good work and appreciate the recognition.
- ▶ Offenders need good professional role models as part of their rehabilitation process. Consider their presence and set good examples by the context of your conversation and choice of language used.

9. Prepared by (Name and Position)

BOLD CREEK

DEMOB LIST

10/12/22

EQUIPMENT

E-141	0730	(ENG5)	SNO COUNTY FD #22 BR68
-------	------	--------	------------------------

10/13/22

EQUIPMENT

E-83	0730	(GWT2)	SPERRY, JASON
------	------	--------	---------------

OVERHEAD

O-127.18	0800	(EMTF)	LUKER, JASON A
O-184	0830	(OSC2)	SORENSEN, SCOTT FRANKLIN
O-212	0845	(MEDL)	READ, CHLOE JENELLE

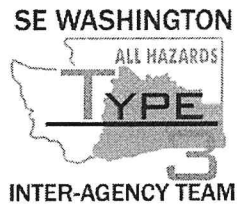
10/14/22

EQUIPMENT

E-143	0000	(WTS2)	TENDER 195 -SKYKOMISH FIRE ROBERT
E-167	0000	(ENG5)	ENG5 - 5202 - WA-NWS
E-169	0000	(ENG5)	ENG5 - 5101 - WA-NWS
E-168	0730	(ENG5)	ENG5 - ENGINE 1201 - WAOLS (WA-
E-170	0800	(ENG5)	ENG5 - 2300 - WA-PCS

OVERHEAD

O-222	0000	(EMPF)	BECKER, REMINGTON RICHARD
O-193	0000	(TFLD)	MCGAUGHEY, JOTHAN KELVYN
O-198	0000	(COML)	MINER, JEFF



BOLT CREEK FIRE

ANDY PALMER/DUTCH CREEK EMERGENCY MEDICAL EVACUATION TIMES

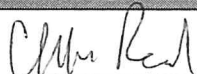

LEADER’S INTENT: To establish **approximate** travel times from key areas of the fire to Skykomish Airport, as well as area hospitals by ground transportation. See Medical Plan (ICS206) for travel times via air and Heli spot Lat and Long. Not all DPs are on the chart. Travel times are approximate, and one should always consider weather, time of day, traffic, and road/trail conditions.

Ground Transport Only	Skykomish Airport	Evergreen Health Monroe	Providence Medical Center (Everett)	Harborview Medical Center (Seattle)
DP-10 (Beckler River CG)	4 Mins	50 Mins	1 Hr 10 Mins	1 Hr 30 Mins
DP-20 (FS-65 and HWY 2)	2 Mins	45 Mins	1 Hr 5 Mins	1 Hr 25 Mins
DP-30 (Smokey’s)	2 Mins	45 Mins	2 Hr 5 Mins	1 Hr 25 Mins
DP-50 (Grotto)	8 Mins	40 Mins	1 Hr	1 Hr 20 Mins
DP-68 (Jim’s Place)	15 Mins	40 Mins	1 Hr	1 Hr 20 Mins
DP-90 (Railroad)	11 Mins	35 Mins	1 Hr	1 Hr 20 Mins
DP-100 (Halford)	12 Mins	35 Mins	1 Hr	1 Hr 20 Mins
DP-102 (120 Spur Rd)	30 Mins	45 Mins	1 Hr	1 Hr 20 Mins
DP-105 (63 Rd and 210)	25 Mins	40 Mins	1 Hr	1 Hr 20 Mins
H-30 (Station 54)	25 Mins	30 Mins	50 Mins	1 Hr 10 Mins
H-67 (Parking Lot)	20 Mins	30 Mins	55 Mins	1 Hr 10 Mins

Study your map. Know where you are working. Know where your medical resources are located today. Situational awareness is your job.

Please provide additional relevant drive times information to SOF2s at ICP in order to populate this table more thoroughly. Help us help you in your time of need.

MEDICAL PLAN (ICS 206 WF)

1. Incident/Project Name				2. Operational Period				
Bolt Creek				Date/Time: 10/12/2022-10/13/2022				
3. Ambulance Services								
Name	Complete Address	Phone		Advanced Life Support (ALS)				
				YES	NO			
Sky Valley Fire #54	42013 State HWY 2-Gold Bar	911		X				
Sultan Fire #51	32905 Cascade View Dr	911			X			
Skykomish FD #50	105 E Old Cascade HWY	911			X			
4. Air Ambulance Services								
Name	Phone		Type of Aircraft & Capability					
Airlift Northwest	911	(800-426-2430)	Rotor					
Life Flight	911	(800-232-0911)	Rotor					
5. Hospitals								
Name Complete Address	Degrees Decimal Minutes		Travel Time From ICP		Phone	Helipad		Level of Care Facility
	Lat:	Long:	Air	Ground		Yes	No	
Evergreen Health Monroe 14701 179 th Ave SE Monroe, WA	N/A	N/A	N/A	5 MIN	425-877-9371		X	Level 4
Providence Medical Center 1321 Colby Ave Everett, WA	47° 59' 58.5" N	122° 12' 21.5" W	10 MIN	25 MIN	425-404-5601	X		Level 2
Harborview Medical 325 9 th Ave Seattle, WA	47° 36' 10.8" N	122° 19' 29.6" W	15 MIN	60 MIN	206-744-3000	X		Level 1 Trauma Burn Center
DIVISIONS								
ICP	EMS Responders:			Chloe Read-MEDL(t)/COVID Liaison W-360-259-6737 C-253-569-2933				
DIV A	EMS Responders & Capabilities:			Medic-Remington Becker / EMT-Jason Luker				
	Medical Emergency Channel:			Command				
	Air:			15 Minutes				
	Ground:			65 Minutes				
	Approved Heli Spot:			Skykomish Airport				
	Lat:			47° 42' 38" N				
	Long:			121° 20' 25" W				
DIV S	EMS Responders & Capabilities:			AMBO 2-Trevor Stanley / Medic-Angel Thorsvold / EMTF-Christy Field				
	Medical Emergency Channel:			Command				
	Air:			15 Minutes				
	Ground:			50 Minutes				
	Approved Heli Spot:			H-67 (Parking Lot)		H-30 (Station 54)		
	Lat:			47° 49' 07" N		47° 50' 31" N		
	Long:			121° 33' 13" W		121° 40' 06" W		
STRUCTURE	NOT STAFFED WITH MEDICAL PERSONNEL							
NIGHT SHIFT	EMS Responders & Capabilities:			AMBO 1-Josh Chisnell				
	Medical Emergency Channel:			Command				
	Approved Heli Spot DIV A			Skykomish Airport				
	Lat:			47° 42' 38" N				
	Long:			121° 20' 25" W				
	Approved Heli Spot DIV S			H-67 (Parking Lot)		H-30 (Station 54)		
	Lat:			47° 49' 07" N		47° 50' 31" N		
	Long:			121° 33' 13" W		121° 40' 06" W		
Prepared by (Medical Unit Leader)			Date:	Reviewed By (Safety Officer)			Date:	
Chloe Read MEDL(t) 			10/11/22	Ken Foss SOFR 			10/11/22	
In case of emergency (Green, Yellow or Red), establish an IC for the IWI, follow your medical incident report and contact communications on command. Establish your PACE (Primary, Alternative, Contingency, Emergency) model for medical emergency extraction.								

MEDICAL PLAN (ICS 206 WF)

Controlled Unclassified Information//Basic

Medical Incident Report					
FOR A NON-EMERGENCY INCIDENT, WORK THROUGH CHAIN OF COMMAND TO REPORT AND TRANSPORT INJURED PERSONNEL AS NECESSARY. FOR A MEDICAL EMERGENCY: IDENTIFY ON SCENE INCIDENT COMMANDER BY NAME AND POSITION AND ANNOUNCE "MEDICAL EMERGENCY" TO INITIATE RESPONSE FROM IMT COMMUNICATIONS/DISPATCH.					
Use the following items to communicate situation to communications/dispatch.					
1. CONTACT COMMUNICATIONS / DISPATCH (Verify correct frequency prior to starting report) <i>Ex: "Communications, Div. Alpha, Stand-by for Emergency Traffic."</i>					
2. INCIDENT STATUS: Provide incident summary (including number of patients) and command structure. <i>Ex: "Communications, I have a Red priority patient, unconscious, struck by a falling tree. Requesting air ambulance to Forest Road 1 at (Lat./Long.) This will be the Trout Meadow Medical, IC is TFLD Jones, EMT Smith is providing medical care."</i>					
Severity of Emergency / Transport Priority	<input type="checkbox"/> RED / PRIORITY 1 Life or limb threatening injury or illness. Evacuation need is IMMEDIATE <i>Ex: Unconscious, difficulty breathing, bleeding severely, 2° - 3° burns more than 4 palm sizes, heat stroke, disoriented.</i> <input type="checkbox"/> YELLOW / PRIORITY 2 Serious Injury or illness. Evacuation may be DELAYED if necessary. <i>Ex: Significant trauma, unable to walk, 2° - 3° burns not more than 1-3 palm sizes.</i> <input type="checkbox"/> GREEN / PRIORITY 3 Minor Injury or illness. Non-Emergency transport <i>Ex: Sprains, strains, minor heat-related illness.</i>				
Nature of Injury or Illness & Mechanism of Injury	<i>Brief Summary of Injury or Illness (Ex: Unconscious, Struck by Falling Tree)</i>				
Transport Request	<i>Air Ambulance / Short Haul/Hoist Ground Ambulance / Other</i>				
Patient Location	<i>Descriptive Location & Lat. / Long. (WGS84)</i>				
Incident Name	<i>Geographic Name + "Medical" (Ex: Trout Meadow Medical)</i>				
On-Scene Incident Commander	<i>Name of on-scene IC of Incident within an Incident (Ex: TFLD Jones)</i>				
Patient Care	<i>Name of Care Provider (Ex: EMT Smith)</i>				
3. INITIAL PATIENT ASSESSMENT: Complete this section for each patient as applicable (start with the most severe patient)					
Patient Assessment: See IRPG page 106					
Treatment:					
4. TRANSPORT PLAN: Evacuation Location (if different): (Descriptive Location (drop point, intersection, etc.) or Lat. / Long.) Patient's ETA to Evacuation Location:					
Helispot / Extraction Site Size and Hazards:					
5. ADDITIONAL RESOURCES / EQUIPMENT NEEDS: <i>Example: Paramedic/EMT, Crews, Immobilization Devices, AED, Oxygen, Trauma Bag, IV/Fluid(s), Splints, Rope rescue, Wheeled litter, HAZMAT, Extrication</i>					
6. COMMUNICATIONS: Identify State Air/Ground EMS Frequencies and Hospital Contacts as applicable					
Function	Channel Name/Number	Receive (RX)	Tone/NAC *	Transmit (TX)	Tone/NAC *
COMMAND					
AIR-TO-GRND					
TACTICAL					
7. CONTINGENCY: Considerations: If primary options fail, what actions can be implemented in conjunction with primary evacuation method? Be thinking ahead.					
8. ADDITIONAL INFORMATION: Updates/Changes, etc.					
REMEMBER: Confirm ETA's of resources ordered. Act according to your level of training. Be Alert. Keep Calm. Think Clearly. Act Decisively.					