

SEWA Team 2



Friday

Incident Action Plan

BOLT CREEK

WA-NWS-150

PN P14322 (1522)

FMAG 221-HPS

OPERATION PERIOD



October 14, 2022, 07:00

to

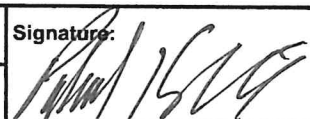
October 15, 2022, 07:00



INCIDENT OBJECTIVES (ICS 202)

1. Incident Name:	2. Operational Period: DAY/NIGHT SHIFT		
BOLT CREEK	Date/Time From:	Date/Time To:	
	10/14/2022 0700 FRI	10/15/2022 0700 SAT	
3. Objective(s):			
Management Objectives			
<ul style="list-style-type: none"> • Provide for firefighter and public safety using ongoing risk analysis and reasonable mitigation of identified hazards. • Minimize impacts to communities and infrastructure, and minimize acres burned on private lands along Highway 2 corridor. • Maintain and enhance relationships with cooperators, stakeholders, landowners, and communities. • Provide accurate and timely information to the public. • Protect tribal, cultural, aquatic, and wildlife resources and sensitive plant sites by coordinating with Resource Advisors. • Treat each other with dignity and respect and act professionally on the fire and in the community. • Manage costs commensurate with values at risk and update Agency Administrators daily. 			
Control Objectives			
<ul style="list-style-type: none"> • Maintain the fire north of Highway 2 utilizing the existing suppression strategy to stop the fire spread to at-risk values. • To control fire, utilize complete suppression and point protection strategies in areas around structures and values. • Keep fire east of Index-Galena Road (FR63) and west of Beckler Creek Road (FR65). • Continue to monitor the fire in the wilderness, only taking action to maintain a fire within the identified east/west parameters. 			
4. Operational Period Command Emphasis:			
<ul style="list-style-type: none"> • Provide a positive presence to the community and the public impacted by the fire. • As the safety of personnel is our highest priority, continually use a deliberate analysis of risk as you engage the fire. <p>Communicating the risks and problems you identify and considering the actions you can take to improve or manage the issue is crucial.</p> <ul style="list-style-type: none"> • Review your LCES in all areas of your work environment. Take 10 minutes as a crew to review your communications in the work area, identify escape routes that will lead you to safety if conditions change, and evaluate the safety zones to ensure they are adequate for you, your crew, and other resources. • Be aware of values at risk inside and adjacent to the fire perimeter. Engage and suppress fire when safe, and employ appropriate tactics for the situation. 			
General Situational Awareness:			
See attached Fire Weather.			
Expect increased traffic on Hwy 2. Use spotters and additional lookouts. Avoid placing personnel or equipment on the roadway unless necessary.			
5. Site Safety Plan Required? Yes <input type="checkbox"/> No <input checked="" type="checkbox"/>			
Approved Site Safety Plan(s) Located			
6. Incident Action Plan (the items checked below are included in this Incident Action Plan):			
<input checked="" type="checkbox"/> ICS 202	<input type="checkbox"/> ICS 207	Other Attachments:	
<input checked="" type="checkbox"/> ICS 203	<input type="checkbox"/> ICS 208	<input checked="" type="checkbox"/> SAFETY	
<input checked="" type="checkbox"/> ICS 204	<input type="checkbox"/> ICS 220	<input checked="" type="checkbox"/> INFORMATION MESSAGE	
<input checked="" type="checkbox"/> ICS 205	<input checked="" type="checkbox"/> Map/Chart	<input checked="" type="checkbox"/> ICS 214 - UNIT LOG	
<input checked="" type="checkbox"/> ICS 205A	<input checked="" type="checkbox"/> Weather Forecast/Tides/Currents	<input checked="" type="checkbox"/> CODE OF CONDUCT	
<input checked="" type="checkbox"/> ICS 206			
7. Prepared by: RYAN SCHARNHORST	Position/Title: PSC3	Signature: 	
8. Approved by Incident Commander:		Signature: 	
ICS 202		IAP Page	Date/Time:

ORGANIZATION ASSIGNMENT LIST (ICS 203)

1. Incident Name:		2. Operational Period: DAY/NIGHT SHIFT	
BOLT CREEK		Date/Time From: 10/14/2022 0700	FRI
		Date/Time To: 10/15/2022 0700	SAT
3. Incident Commander(s) and Command Staff:		MEDICAL UNIT	ZEBRON WATTS 541-270-4131
IC/UC	LEONARD JOHNSON 360-581-9672	CAMP SECURITY	JAMES GREEN 360-519-9932 (DAY) CHAD RIGGIN (NIGHT)
DEPUTY IC	WALTER ESCOBAR 509-398-1222	7. Operations Section:	
INFORMATION OFFICER	KAREN SARGEANT 509-885-0067 DONALD FERGUSON 541-778-2679	OPS SECTION CHIEF	RYAN NICHOLLS 509-430-1606
INFORMATION OFFICER	JOSIE WILLIAMS (V) 425-647-1872	PLANNING OPS	WES LONG 360-281-9585
LIAISON OFFICER	TIM MCKERN (V) 360-463-2767 DAN SMITH (V) 360-340-4366 (T)	DIVISION/GROUP	A
SAFETY OFFICER	KEN FOSS 253-318-2678 BONNIE ROGERS 509-713-9107 (T)		KEN JOHNSON 509-496-5452
4. Agency/Organization Representative(s):		DIVISION/GROUP	P
Agency/Organization	Name		BRAD WALLACE 509-899-1057
DNR- NW REGION ADMIN	JAY S GUTHRIE LAURIE BERGVALL (ACT)	DIVISION/GROUP	S
DNR - NW REGION REP	SHANNON CLARK		BENJAMIN LIPPERT 509-675-6362
USFS MSF / AA	JEFF MARSZAL BRYAN MCNEIL (ACT)	DIVISION/GROUP	Z
WA STATE PATROL	LT. DEION GLOVER		(UNSTAFFED)
BNSF	RYAN KUBO	DIVISION/GROUP	FIRING GROUP
SNOHOMISH CO DEM	JARROD DIBBLE		DALE HEIDAL 360-402-9494
KING CO DEM	ALYSHA KAPLAN	DIVISION/GROUP	STRUCTURE
SNOHOMISH CO SHERIFF	LT. MIKE MARTIN		AARON BIBE 509-591-8620
KING CO SHERIFF	CAPT. PETER HORVATH	DIVISION/GROUP	NIGHT
SKY VALLEY FD #26	CHIEF ERIC ANDREWS		DJ GOLDSMITH 509-951-8755
SKYKOMISH FD #50	CHIEF JAMES KNISLEY	DIVISION/GROUP	65 ROAD CLOSURE
USFS LEAD READ	MATT KENNEY		BRIAN MCNEIL 425-365-6067
5. Planning Section:		7b. Air Operations Branch:	
CHIEF	RYAN SCHARNHORST 509-432-1016 PATRICK REID 509-537-6343 (T)	AIR OPS BRANCH DIRECTOR	
SCKN/DEMOB	JULIA EVERTA 707-683-6782	AIR ATTACK SUPERVISOR	
INCIDENT METEOROLOGIST	LISA KRIEDERMAN 240-778-5298	AIR SUPPORT SUPERVISOR	
SITUATION UNIT	DAVID WINTER 509-301-2631	8. Finance/Administration Section:	
FIRE BEHAVIOR ANALYST	STEVE ZIEL 541-890-6862	CHIEF	PAULA JAMES 808-298-1386
GIS SPECIALIST	RACHEL ARMSTRONG (V)	PTRC	JANET MCINTOSH
6. Logistics Section:		TIME UNIT	JEANNE CHRISTENSEN
CHIEF	CINDY PRESTON 509-607-9724		
DEPUTY	JOSH AMBROSE 360-310-0401		
GROUND SUPPORT UNIT	KEVIN SELL		
COMMUNICATIONS UNIT	PAUL CARLYE 509-438-9702		
BASE CAMP MGR	CODY TOPPING		
EQUIPMENT	CAMERON ESKEBERG		
9. Prepared By:	Name: PATRICK REID	Position/Title: PSC3(T)	Signature:
ICS 203	IAP Page	Date/Time: 10/13/2022 0856	



INCIDENT Weather Forecast



FORECAST NO: 27

NAME OF FIRE: Bolt Creek

PREDICTION FOR: 0700 - 0700

UNIT: WA-NDC

SHIFT DATE: Friday, October 14, 2022

SIGNED: *Lisa Kriederman*

FORECAST ISSUED: 1700 PDT Oct 13, 2022

Incident Meteorologist

*****FIRE WEATHER WATCH FOR SATURDAY LATE MORNING THROUGH SUNDAY EVENING*****

WEATHER DISCUSSION: Expect warm and dry conditions again, but just a few degrees cooler and slightly higher humidity compared to yesterday. A stronger inversion will hold in more smoke, this combined with some thin high clouds will result in light winds. East winds will begin to increase along the ridges tonight, spreading across the area Saturday morning.

WEATHER FORECAST:

WEATHER: Thin high clouds, smoke skies.

MAX TEMPERATURES: 66 to 71 ridges and upper slopes; 72 to 77 lower slopes and valleys.

MIN HUMIDITY: 32 to 44 percent, lowest values in Div A.

20 FT WINDS:

RIDGETOP - Northwest 3 to 6 mph.

SLOPE/VALLEY - Drainage winds 0 to 2 mph until 1000, turning upslope through 1300, then upvalley 2 to 4 mph.

HAINES INDEX: 5 (Moderate)

INVERSION: Strong, weakening by 1300 hrs.

OUTLOOK FOR TONIGHT: A few high clouds in the evening, then clear. Low temperatures in the low to mid 50s. Maximum humidity 40 to 55 percent on upper slopes and ridges, 70 to 85 percent in valleys. Light and variable winds, becoming East 2 to 4 mph after midnight in the valleys. Along the ridges...East winds 3 to 6 mph with gusts to 10 mph, increasing to 7 to 9 mph with gusts to 16 mph after 0200.

OUTLOOK FOR SATURDAY:

WEATHER: Sunny and breezy.

TEMPERATURES: 71 to 76 ridges and upper slopes; 75 to 82 lower slopes and valleys.

HUMIDITY: 28 to 38 percent.

20 FT WINDS:

RIDGETOP - East 9 to 14 mph with gusts to 24 mph

SLOPE/VALLEY - Light easterly drainage winds 1 to 3 mph until 0900, becoming East 5 to 8 mph with gusts 12 to 18 mph.

HAINES INDEX: 5 (Moderate)

INVERSION: Weak, lifting between around 0900.

EXTRA INFORMATION:

Sunrise: 0723

Sunset: 1819

Fire Behavior Forecast # 05

Name of Incident: Bolt Creek	Administrative Unit: WA-NWS
Date & Time Issued: October 13, 2022 @ 1900	Operational Period: DAY/NIGHT 10/14-15/2022 (0700-0700)
FBAN: Steve Ziel	Signed: /z/ <i>[Signature]</i>

Assumptions: *Persistent "warm and dry" pattern will produce areas of moderate-to-active fire behavior potential across the fire. We have all the ingredients for an "observable increase" in fire behavior due to low RH, abundant dry fuels, and heavy fuel loading. Expect the most favorable burning conditions between 1300-1800. Persistent burning conditions in heavy fuels, deep duff, and concentrations across the area. Lower slopes/river areas may remain smoke sheltered through the period with fair night time humidity recovery, while upper slope recovery will also be fair. Monitor lower slope and river winds for early morning down drainage flow, then light westerly. Cumulative effect of drying: aggressive smoldering, with more creeping and surface fire spread.*

Weather Summary

*See attached Fire Weather Forecast

Fire Behavior Summary

Fuels in the fire area are primarily composed of *Timber Litter*, and *Timber with Understory*. Primary tree species include mixed sizes of Douglas Fir, Western Hemlock, with scattered cedar. Local timber litter is compact to fluffy with green moss. Shrub and understory species include mixed hardwoods, and dog-hair conifer thickets. Large snags and heavy fuel concentrations are common throughout all areas. Live woody fuels are marginally contributing to fire rate of spread and fire intensity. Fuel conditions change by elevation, and aspect. Low crown base height (ladder fuels) and thick moss are present in most of the timbered areas. **Lots of hardwood leaf litter.**

Today's potential fire behavior will generally consist of "smoldering and creeping" – that may transition to pockets/areas of surface fire spread with isolated flare ups and occasional torching. Primary spread mechanism is creeping transitioning to flame in fresh fuels. Wind/slope alignment on upper slopes and along drainages may contribute to increased surface fire spread. Areas of backing, and flanking (lateral) spread may increase in the afternoon with warmer/drier conditions, and sunshine. Fire activity may extend into the evening due to low daytime humidity, and easterly wind flow during the late night.

* **Fine fuel moisture= 6%-9%, 1000hr. moisture=12%, Woody fuels 190%, Probability of Ignition-30-50%**

Fuel Type	Rate of Spread	Flame Length	Spotting Distance	20 MPH Gusts FPM
...If your work area includes -	(CH/HR = FPM)	Feet		
Timber Litter (TL5) Heavy	2-3	2		
Timber w/ Understory (TU5) Heavy	4-6	4-5		
Timber w/ Understory (TU2) Moderate	5-6	2-3		

Specific Assignments:

- Div. A** – Monitor fire activity on lower slopes for flare-ups. Expect continued activity in freshly burned areas north of Skykomish for increased activity due to river influence winds. Expect flare ups at Eagle Cr. and Beckler River, and SW/SW Sec. 6 below 6510.
- Div. S** – Monitor flanking/backing on Heybrook Ridge, and 6022 Rd. (Sec. 26), and increased activity in lower Barclay Creek (Sec. 35).
- Div. P** – Monitor down canyon flow in morning, up canyon flow during the day. Expect rolling materials on steep slopes above Hwy. 2.

Air Operations: May be impacted by strong morning smoke inversion until 1200, then hazy with trapped smoke in deep valleys.

Safety

Fire behavior hazards includethreats to your feet, hands, airways, knees, shins, and eyes that continue to be challenged by smoke, ash, dirt, sharp things, pokey stuff, steam.....be kind to your money making parts, lots of season left (??).

Sudden flare-ups are possible, multiple flare-ups may occur with winds. Multiple simultaneous fire situations become critical without LCES. Plan ahead for actions to take; foot travel takes time!! Review the Watch Out Situations with your resources– can you mitigate??

*Today's Fire Behavior Forecast contains 679 words (-71 from previous) written for your situational awareness.

IAP

Bolt Creek

WA-NWS-000150

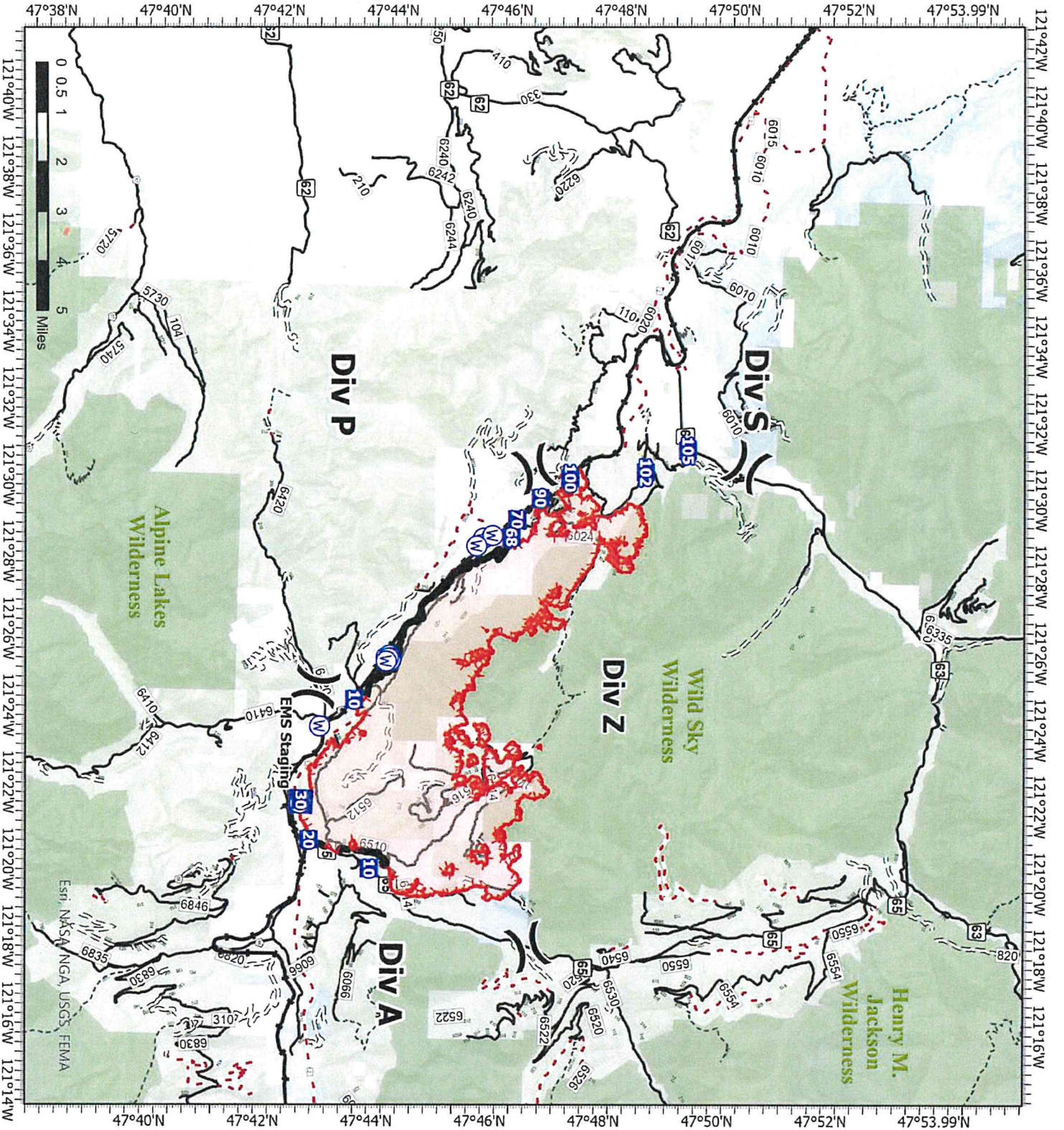
10/14/2022

13,826 acres at 10/12/2022 @2000

- Division Break
- Medical
- Drop Point
- Water Source
- Contained
- Uncontained
- Bureau of Land Management (BLM)
- State
- US Forest Service (USFS)
- Private
- Undetermined
- Railroads
- Open Roads
- Closed Roads
- Decommissioned Roads
- Decommissioned Roads
- Trail
- Wilderness



Map updated:
10/13/2022 1848



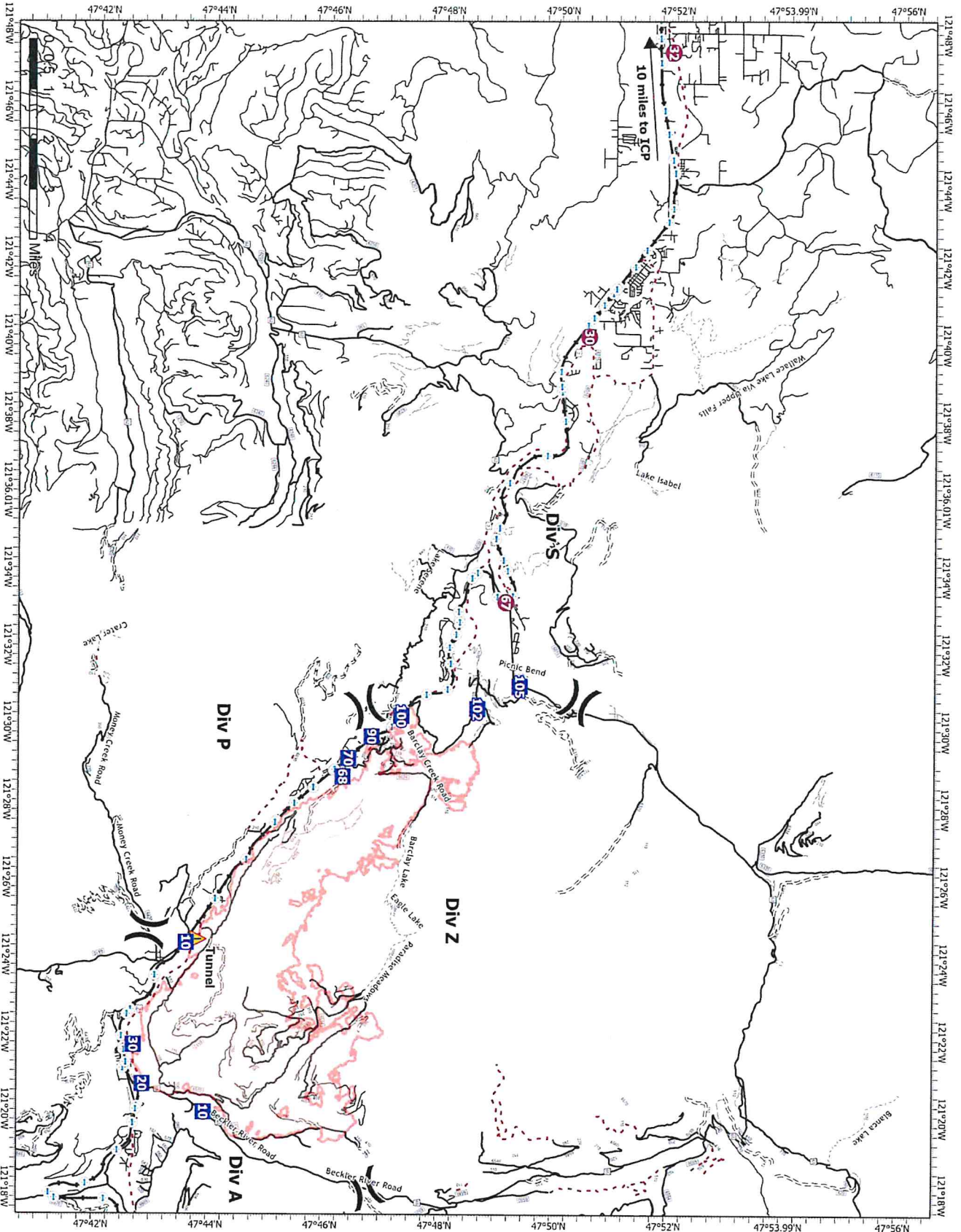
Transportation

Bolt Creek WA-NWS-000150

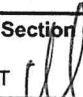
10/14/2022

13,826 acres at 10/12/2022 @2000


- Hellsport
- ⋈ Division Break
- Drop Point
- ▲ Tunnel
- Secondary Hwy
- Local Road
- 4WD
- Trail
- Runway
- Bridges
- Railroads
- Open Roads
- Closed Roads
- Decommissioned Roads
- Decommissioned Roads




Division/Group Assignment List (ICS 204 WF)
Controlled Unclassified Information//Basic

1. Incident Name:			3.			
BOLT CREEK			Branch:		Division/Group	
2. Operational Period: DAY/NIGHT SHIFT					A	
Date/Time From: 10/14/2022 0700 FRI		Date/Time To: 10/15/2022 0700 SAT				
4. Operations Personnel						
OPERATIONS CHIEF		RYAN NICHOLLS 509-430-1606		PLANNING OPS		WES LONG 360-281-9585
FIELD OPS				DIVISION/GROUP SUPERVISOR		KENNETH JOHNSON 509-496-5452
5. Resources Assigned this Period						
Strike Team / Task Force / Resource Designator		LWD	Leader	Number Persons	Drop Off PT./Time	Pick Up PT./Time
C-21 CRW2 NORTH PACIFIC FORESTRY INC.		10/26	JESUS CHIPREZ	20	ICP/0700	ICP/1900
O-211 FMOD BAILEY LOGGING		10/18	BEN A NEWMAN	2	ICP/0700	ICP/1900
O-238 FELB TODD OLSON 360-742-06825		10/14		1	ICP/0700	ICP/1900
O-185 STEN ETRINGER (T) 360-319-2775		10/14		1	ICP/0700	ICP/1900
E-136 ENG6 LIBERTY WILDFIRE, INC.		10/21	EDWARD KENNEY	3	ICP/0700	ICP/1900
E-137 ENG3 BAILEY ENTERPRISES, L.L.C.		10/15	GREG BAILEY	3	ICP/0700	ICP/1900
E-197 ENG6 METHOW RIVER WILD FIRE		10/26	JEFF HERRON	3	ICP/0700	ICP/1900
E-198 ENG6 METHOW RIVER WILD FIRE		10/26	IVAN MUNOZ	3	ICP/0700	ICP/1900
E-201 ENG6 WILD FIRE SERVICES INC		10/26	RUBI HERNANDEZ-MARTINEZ	3	ICP/0700	ICP/1900
E-143 WTS2 SKYKOMISH FIRE		10/25	ROBERT CAMPBELL	1	ICP/0700	ICP/1900
O-224 STEN BRIAN WESEMANN 360-749-6128		10/22		1	ICP/0700	ICP/1900
E-130 ENG6 LATE SUMMERS WILDFIRE		10/22	JENSEN BOVEE	3	ICP/0700	ICP/1900
E-131 ENG3 MEADOW WILDFIRE		10/27	GUS SCHALO	3	ICP/0700	ICP/1900
E-133 ENG5 RAINIER WILDFIRE		10/23	SPENCER SHAW	3	ICP/0700	ICP/1900
E-134 ENG NORTHRIDGE WILDFIRE		10/24	BRITTANY NORDHAGEN	3	ICP/0700	ICP/1900
E-135 ENG RAINIER WILDFIRE		10/20	MICHAEL SUTTON	3	ICP/0700	ICP/1900
8. Division/Group Communication Summary						
Function	Channel	RX Frequency N/W	RX Tone/NAC	TX Frequency N/W	TX Tone/NAC	Mode
TACTICAL	1	151.3100	118.8	151.3100	118.8	A
COMMAND	7	159.4125	118.8	151.4450	118.8	A
COMMAND	8	159.3750	118.8	151.3250	118.8	A
AIR TO GROUND	12	159.2700	103.5	159.2700	103.5	A
AIR TO GROUND	13	151.2875	103.5	151.2875	103.5	A
AIR GUARD	16	168.6250	000.0	168.6250	110.9	A
9. Prepared By (Resource Unit Leader)			Approved By (Planning Section Chief)		Date	Time
PATRICK REID			RYAN SCHARNHORST 		10/13/2022	0856

Division/Group Assignment List (ICS 204 WF)
Controlled Unclassified Information//Basic

1. Incident Name:			3.			
BOLT CREEK			Branch:		Division/Group	
2. Operational Period:			A			
DAY/NIGHT SHIFT						
Date/Time From: 10/14/2022 0700 FRI		Date/Time To: 10/15/2022 0700 SAT				
4. Operations Personnel						
OPERATIONS CHIEF		RYAN NICHOLLS 509-430-1606		PLANNING OPS		WES LONG 360-281-9585
FIELD OPS				DIVISION/GROUP SUPERVISOR		KENNETH JOHNSON 509-496-5452
5. Resources Assigned this Period						
Strike Team / Task Force / Resource Designator		LWD	Leader	Number Persons	Drop Off PT./Time	Pick Up PT./Time
O-240 SOFR RYAN GRANT 509-254-1672		10/27		1	ICP/0700	ICP/1900
O-222 EMPF REMINGTON BECKER 360-903-8612		10/20		1	ICP/0700	ICP/1900
6. Control Operations/Work Assignments:						
<p>Task: Hold fire from crossing Hwy 2, reinforce primary control lines, and maintain patrol status within the division. Maintain IA readiness.</p> <p>Purpose: Confine the fire to its current footprint. Limit the impacts of fire spread around infrastructure, structures, timber, and other identified values at risk.</p> <p>End State: Fire is confined to the existing footprint and defensive preparations are in place around all infrastructures and structures.</p>						
7. Special Instructions:						
<ul style="list-style-type: none"> • Utilize Field Maps and Avenza to input suppression repair needs. • Text weather to IMET at 240-778-5298 at 1400 hours. • Notify WA DOT of trees or debris falling on the highway. • When addressing road hazards, utilize a vehicle equipped with emergency warning lights after blocking the roadway. • Clear leaf litter from control lines. 						
8. Division/Group Communication Summary						
Function	Channel	RX Frequency N/W	RX Tone/NAC	TX Frequency N/W	TX Tone/NAC	Mode
TACTICAL	1	151.3100	118.8	151.3100	118.8	A
COMMAND	7	159.4125	118.8	151.4450	118.8	A
COMMAND	8	159.3750	118.8	151.3250	118.8	A
AIR TO GROUND	12	159.2700	103.5	159.2700	103.5	A
AIR TO GROUND	13	151.2875	103.5	151.2875	103.5	A
AIR GUARD	16	168.6250	000.0	168.6250	110.9	A
9. Prepared By (Resource Unit Leader)			Approved By (Planning Section Chief)		Date	Time
PATRICK REID			RYAN SCHARNHORST 		10/13/2022	0856

Division/Group Assignment List (ICS 204 WF)
Controlled Unclassified Information//Basic

1. Incident Name:			3.			
BOLT CREEK			Branch:		Division/Group	
2. Operational Period: DAY/NIGHT SHIFT			P			
Date/Time From: 10/14/2022 0700 FRI		Date/Time To: 10/15/2022 0700 SAT				
4. Operations Personnel						
OPERATIONS CHIEF		RYAN NICHOLLS 509-430-1606		DIVISION/GROUP SUPERVISOR		BRAD WALLACE 509-899-1057
AIR ATTACK SUPERVISOR				PLANNING OPS		WES LONG 360-281-9585
5. Resources Assigned this Period						
Strike Team / Task Force / Resource Designator		LWD	Leader	Number Persons	Drop Off PT./Time	Pick Up PT./Time
C-18 CR2I NORTH PACIFIC FORESTRY INC		10/22	JOSE PEREZ ARELLANO	20	ICP/0700	ICP/1900
E-179 CHP2 CHPW- ROAD HOME, INC.		10/20	ANDREW GIBBS	3	ICP/0700	ICP/1900
E-149 DO22 BURGESS LOGGING		10/23	WILLIAM BURGESS	2	ICP/0700	ICP/1900
O-251 STEN CORY BERGSTROM (T)		10/26		1	ICP/0700	ICP/1900
E-197 ENG6 METHOW RIVER WILD FIRE		10/26	JEFF HERRON	3	ICP/0700	ICP/1900
E-198 ENG6 METHOW RIVER WILD FIRE		10/26	IVAN MUNOZ	3	ICP/0700	ICP/1900
E-205 ENG6 SOUTH COUNTY		10/27	ANDREW LUNNY	2	ICP/0700	ICP/1900
E-206 ENG6 WOODPECKER CO		10/27	MICHELLE HERRIN	3	ICP/0700	ICP/1900
E-207 ENG3 RATTLESNAKE RIDGE		10/27	FABIAN BREMERMAN	3	ICP/0700	ICP/1900
O-240 SOFR RYAN GRANT 509-254-1672		10/27		1	ICP/0700	ICP/1900
E-185 AMB2 CENTAL KITSAP		10/22	TREVOR LEE STANLEY 360-620-6558	2	ICP/0700	ICP/1900
6. Control Operations/Work Assignments:						
<p>Task: Hold fire from crossing Hwy 2, reinforce primary control lines, patrol, and maintain patrol status within the division.</p> <p>Purpose: Confine the fire to its current footprint. Limit the impacts of fire spread around infrastructure, structures, timber, and other identified values at risk.</p> <p>End State: Fire is confined to the existing footprint and defensive preparations are in place around all infrastructure and structures.</p>						
7. Special Instructions:						
8. Division/Group Communication Summary						
Function	Channel	RX Frequency N/W	RX Tone/NAC	TX Frequency N/W	TX Tone/NAC	Mode
TACTICAL	3	151.2125	118.8	151.2125	118.8	A
COMMAND	7	159.4125	118.8	151.4450	118.8	A
COMMAND	8	159.3750	118.8	151.3250	118.8	A
AIR TO GROUND	12	159.2700	103.5	159.2700	103.5	A
AIR TO GROUND	13	151.2875	103.5	151.2875	103.5	A
AIR GUARD	16	168.6250	000.0	168.6250	110.9	A
9. Prepared By (Resource Unit Leader)			Approved By (Planning Section Chief)		Date	Time
PATRICK REID			RYAN SCHARNHORST 		10/13/2022	0856

Division/Group Assignment List (ICS 204 WF)
Controlled Unclassified Information//Basic

1. Incident Name:		3.	
BOLT CREEK		Branch:	Division/Group
2. Operational Period:		P	
DAY/NIGHT SHIFT			
Date/Time From:	Date/Time To:		
10/14/2022 0700 FRI	10/15/2022 0700 SAT		
4. Operations Personnel			
OPERATIONS CHIEF	RYAN NICHOLLS 509-430-1606	DIVISION/GROUP SUPERVISOR	BRAD WALLACE 509-899-1057
AIR ATTACK SUPERVISOR		PLANNING OPS	WES LONG 360-281-9585

7. Special Instructions:

- Notify WA DOT of trees or debris falling on the highway.
- When addressing road hazards, utilize a vehicle equipped with emergency warning lights after blocking the roadway.
- Clear leaf litter from control lines.
- Text weather to IMET at 240-778-5298 at 1400 hours.
- Backhaul unused equipment to base camp.

8. Division/Group Communication Summary						
Function	Channel	RX Frequency N/W	RX Tone/NAC	TX Frequency N/W	TX Tone/NAC	Mode
TACTICAL	3	151.2125	118.8	151.2125	118.8	A
COMMAND	7	159.4125	118.8	151.4450	118.8	A
COMMAND	8	159.3750	118.8	151.3250	118.8	A
AIR TO GROUND	12	159.2700	103.5	159.2700	103.5	A
AIR TO GROUND	13	151.2875	103.5	151.2875	103.5	A
AIR GUARD	16	168.6250	000.0	168.6250	110.9	A
9. Prepared By (Resource Unit Leader)		Approved By (Planning Section Chief)		Date	Time	
PATRICK REID		RYAN SCHARNHORST		10/13/2022	0856	


Division/Group Assignment List (ICS 204 WF)
Controlled Unclassified Information//Basic

1. Incident Name:			3.			
BOLT CREEK			Branch:		Division/Group	
2. Operational Period: DAY/NIGHT SHIFT					S	
Date/Time From: 10/14/2022 0700 FRI		Date/Time To: 10/15/2022 0700 SAT				
4. Operations Personnel						
OPERATIONS CHIEF		RYAN NICHOLLS 509-430-1606		PLANNING OPS		WES LONG 360-281-9585
FIELD OPS				DIVISION/GROUP SUPERVISOR		BENJAMIN LIPPERT 509-675-6362
5. Resources Assigned this Period						
Strike Team / Task Force / Resource Designator		LWD	Leader	Number Persons	Drop Off PT./Time	Pick Up PT./Time
O-206.19 TFLD MICHAEL NICK 509-563-9188		10/19		1	ICP/0700	ICP/1900
O-225 TFLD SHAWN ONGERS (T) 509-386-3900		10/15		1	ICP/0700	ICP/1900
C-19 CR2I GRAYBACK FORESTRY, INC.		10/23	TIMOTHY BREWER	20	ICP/0700	ICP/1900
C-20 CR2I SES AHTANUM		10/26	JEFFREY DELAROSA	18	ICP/0700	ICP/1900
O-194 FMOD MOUNTAIN WEST		10/14	MATTHEW HOLZNAGAL	2	ICP/0700	ICP/1900
O-219 FELB(T) DANIEL OAKLAND 401-258-4702		10/18		1	ICP/0700	ICP/1900
E-150 CHP2 BROTHERS FIRE		10/19	SHANE MUSTARD	3	ICP/0700	ICP/1900
O-165 STEN GREG SEALS 360-480-9485		10/14		1	ICP/0700	ICP/1900
E-138 ENG4 CHEWACK WILDFIRE INC		10/26	ANDREW GRAVES	3	ICP/0700	ICP/1900
E-139 ENG5 BLACKSTONE FORESTRY LLC		10/19	TARYN THOMAS	3	ICP/0700	ICP/1900
E-176 ENG5 OSPREY WILDFIRE, LLC		10/19	DUSTIN WILLIAMS	3	ICP/0700	ICP/1900
E-200 ENG6 WILD FIRE SERVICES INC		10/26	JASON SARE	3	ICP/0700	ICS/1900
E-174 WTS2 SNOHOMISH FD26		10/20	TYLER KNUDSON	1	ICP/0700	ICP/1900
O-242 STEN ANDREW KLUNDER 605-484-5611		10/27		1	ICP/0700	ICP/1900
E-193 ENG5 METHOW RIVER WILD FIRE		10/26	RICHIE HARVEY	3	ICP/0700	ICP/1900
E-194 ENG5 EARLY WINTERS		10/26	CHRIS SURFACE	3	ICP/0700	ICP/1900
E-196 ENG5 C2C WILDFIRE INC.		10/26	BRYCE HOLBROOK	3	ICP/0700	ICP/1900
E-199 ENG6 BLACKSTONE FORESTRY, LLC		10/26	RILEY NOONAN	3	ICP/0700	ICP/1900
8. Division/Group Communication Summary						
Function	Channel	RX Frequency N/W	RX Tone/NAC	TX Frequency N/W	TX Tone/NAC	Mode
TACTICAL	2	151.3400	118.8	151.3400	118.8	A
COMMAND	8	159.3750	118.8	151.3250	118.8	A
COMMAND	7	159.4125	118.8	151.4450	118.8	A
AIR TO GROUND	12	159.2700	103.5	159.2700	103.5	A
AIR TO GROUND	13	151.2875	103.5	151.2875	103.5	A
AIR GUARD	16	168.6250	000.0	168.6250	110.9	A
9. Prepared By (Resource Unit Leader)		Approved By (Planning Section Chief)			Date	Time
PATRICK REID		RYAN SCHARNHORST			10/13/2022	0856

Division/Group Assignment List (ICS 204 WF)
Controlled Unclassified Information//Basic

1. Incident Name:		3.				
BOLT CREEK		Branch:		Division/Group		
2. Operational Period:		DAY/NIGHT SHIFT				
Date/Time From:		Date/Time To:		S		
10/14/2022 0700 FRI		10/15/2022 0700 SAT				
4. Operations Personnel						
OPERATIONS CHIEF		RYAN NICHOLLS 509-430-1606		PLANNING OPS		WES LONG 360-281-9585
FIELD OPS				DIVISION/GROUP SUPERVISOR		BENJAMIN LIPPERT 509-675-6362
5. Resources Assigned this Period						
Strike Team / Task Force / Resource Designator		LWD	Leader	Number Persons	Drop Off PT./Time	Pick Up PT./Time
E-208 ENG4 HI COUNTRY L.L.C.		10/26	CODY SUTTON	3	ICP/0700	ICP/1900
O-155 EMPF ANGEL THORSVOLD 541-588-2314		10/14		1	ICP/0700	ICP/1900
O-172 EMTB CHRISTY FIELD 541-399-6943		10/18		1	ICP/0700	ICP/1900
6. Control Operations/Work Assignments:						
<p>Task: Hold fire from crossing Hwy 2, reinforce primary control lines, clear roadways to provide for safe travel, and maintain patrol status within the division. Maintain Initial Attack availability.</p> <p>Purpose: Confine the fire to its current footprint. Limit the impacts of fire spread around infrastructure, structures, timber, and other identified values at risk.</p> <p>End State: Fire is confined to the existing footprint and defensive preparations are in place around all infrastructure, structures, and roads are cleared of debris reducing the hazards to firefighters and the public.</p>						
7. Special Instructions:						
<ul style="list-style-type: none"> • Ambulance (E-185), "AMBO2", is staged at Money Creek. • Improve spur 120 off of 6022 Road • Reassess current indirect line placement for effectiveness. • Text weather to IMET at 240-778-5298 at 1400 hours. 						
8. Division/Group Communication Summary						
Function	Channel	RX Frequency N/W	RX Tone/NAC	TX Frequency N/W	TX Tone/NAC	Mode
TACTICAL	2	151.3400	118.8	151.3400	118.8	A
COMMAND	8	159.3750	118.8	151.3250	118.8	A
COMMAND	7	159.4125	118.8	151.4450	118.8	A
AIR TO GROUND	12	159.2700	103.5	159.2700	103.5	A
AIR TO GROUND	13	151.2875	103.5	151.2875	103.5	A
AIR GUARD	16	168.6250	000.0	168.6250	110.9	A
9. Prepared By (Resource Unit Leader)		Approved By (Planning Section Chief)			Date	Time
PATRICK REID		RYAN SCHARNHORST			10/13/2022	0856

Division/Group Assignment List (ICS 204 WF)
Controlled Unclassified Information//Basic

1. Incident Name:			3.			
BOLT CREEK			Branch:		Division/Group	
2. Operational Period: DAY/NIGHT SHIFT					Z	
Date/Time From: 10/14/2022 0700 FRI		Date/Time To: 10/15/2022 0700 SAT				
4. Operations Personnel						
OPERATIONS CHIEF		RYAN NICHOLLS 509-430-1606		BRANCH DIRECTOR		
DIVISION/GROUP SUPERVISOR				AIR ATTACK SUPERVISOR		
DIVISION/GROUP SUPERVISOR		UNSTAFFED				
5. Resources Assigned this Period						
Strike Team / Task Force / Resource Designator		LWD	Leader	Number Persons	Drop Off PT./Time	Pick Up PT./Time
NO ASSIGNED RESOURCES						
6. Control Operations/Work Assignments:						
Task: Unstaffed. Take no action(s).						
Purpose:						
End State:						
7. Special Instructions:						
8. Division/Group Communication Summary						
Function	Channel	RX Frequency N/W	RX Tone/NAC	TX Frequency N/W	TX Tone/NAC	Mode
COMMAND						
TACTICAL						
LOGISTICS						
AIR TO GROUND						
9. Prepared By (Resource Unit Leader)			Approved By (Planning Section Chief)		Date	Time
DAVID WINTER			RYAN SCHARNHORST 		10/13/2022	2000


Division/Group Assignment List (ICS 204 WF)
Controlled Unclassified Information//Basic

1. Incident Name:			3.			
BOLT CREEK			Branch:		Division/Group	
2. Operational Period: DAY/NIGHT SHIFT			FIRING GROUP			
Date/Time From: 10/14/2022 0700 FRI		Date/Time To: 10/15/2022 0700 SAT				
4. Operations Personnel						
OPERATIONS CHIEF		RYAN NICHOLLS 509-430-1606		BRANCH DIRECTOR		
DIVISION/GROUP SUPERVISOR		DALE HEIDAL 360-402-9494		PLANNING OPS WES LONG 360-281-9585		
5. Resources Assigned this Period						
Strike Team / Task Force / Resource Designator		LWD	Leader	Number Persons	Drop Off PT./Time	Pick Up PT./Time
O-247 WFM1 WHISKEYTOWN		10/17	WARREN SWAB 530-999-1674	7	ICP/0700	ICP/1900
C-17 CR2I MT BAKER IA		10/18	ERIK USHER	20	ICP/0700	ICP/1900
6. Control Operations/Work Assignments:						
<p>Task: Prepare for firing operations in all divisions by assessing, documenting, consulting, and ordering supplies as needed.</p> <p>Purpose: Construct a firing plan to contain the fire within the identified contingency lines, protect structures, protect infrastructure, and keep the fire from crossing Hwy 2.</p> <p>End State: Fire containment with minimal growth, no infrastructure or structural damage, and protection of values at risk, including the forest and timber.</p>						
7. Special Instructions:						
<ul style="list-style-type: none"> Utilize aviation resources as needed. Coordinate with the appropriate Division Supervisor to align the resources needed to assist in holding the fire operations within the containment lines. Do not conduct firing operations if outside the prescription plan perimeters. Notify the Structure Protection Group to implement Lookout management action points (MAPs) should any firing operations cross 6022 Road. 						
8. Division/Group Communication Summary						
Function	Channel	RX Frequency N/W	RX Tone/NAC	TX Frequency N/W	TX Tone/NAC	Mode
TACTICAL	2	151.3400	118.8	151.3400	118.8	A
COMMAND	7	159.4125	118.8	151.4450	118.8	A
COMMAND	8	159.3750	118.8	151.3250	118.8	A
TACTICAL	1	151.3100	118.8	151.3100	118.8	A
TACTICAL	3	151.2125	118.8	151.2125	118.8	A
AIR TO GROUND	12	159.2700	103.5	159.2700	103.5	A
AIR TO GROUND	13	151.2875	103.5	151.2875	103.5	A
9. Prepared By (Resource Unit Leader)			Approved By (Planning Section Chief)		Date	Time
PATRICK REID			RYAN SCHARNHORST		10/13/2022	2030

Division/Group Assignment List (ICS 204 WF)
Controlled Unclassified Information//Basic

1. Incident Name:		3.				
BOLT CREEK		Branch:		Division/Group		
2. Operational Period:		DAY/NIGHT SHIFT				
Date/Time From:		Date/Time To:		STRUCTURE		
10/14/2022 0700 FRI		10/15/2022 0700 SAT				
4. Operations Personnel						
OPERATIONS CHIEF		RYAN NICHOLLS 509-430-1606		DIVISION/GROUP SUPERVISOR		AARON BIBE 509-591-8620
PLANNING OPS		WES LONG 360-281-9585				
5. Resources Assigned this Period						
Strike Team / Task Force / Resource Designator		LWD	Leader	Number Persons	Drop Off PT./Time	Pick Up PT./Time
O-197 TFLD KENNETH JONES (T) 509-683-2092		10/16		1	ICP/0700	ICP/1900
E-177 ENG5 LIBERTY WILDFIRE		10/24	KATHLEEN CALVIN	3	ICP/0700	ICP/1900
E-175 ENG5 WA-SPS		10/21	REECE JOHNSON	3	ICP/0700	ICP/1900
E-183 ENG5 LL MEADOW WILDFIRE		10/21	WESLEY JAMES	3	ICP/0700	ICP/1900
E-180 ENG5 WA-OLS		10/23	REGGIE BUATTNOR 360-670-7320	3	ICP/0700	ICP/1900
E-182 ENG5 METHOW RIVER WILD		10/23	JOHN NEUNEKOR 509-409-1485	3	ICP/0700	ICP/1900
E-184 WTS2 SNOHOMISH FD25		10/24	JAY FISHER 206-920-3743	1	ICP/0700	ICP/1900
O-255 EMPF JOEL BOWER 360-461-7390		10/27		1		
6. Control Operations/Work Assignments:						
<p>Task: Hold fire from crossing Hwy 2, implement the structural defense plan with an emphasis on perimeter control, and maintain patrol status within the division.</p> <p>Purpose: Confine the fire to its current footprint. Limit the impacts of fire spread around infrastructure, structures, timber, and other identified values at risk.</p> <p>End State: Fire is confined to the existing footprint and defensive preparations are in place around all infrastructure and structures.</p>						
7. Special Instructions:						
<ul style="list-style-type: none"> • Maintain awareness of construction traffic along 63 Road. • Validate the structure protection plan. • If the fire crosses 6022 Road, implement the structure protection plan at Haybrook Lookout. 						
8. Division/Group Communication Summary						
Function	Channel	RX Frequency N/W	RX Tone/NAC	TX Frequency N/W	TX Tone/NAC	Mode
TACTICAL	5	153.8300	000.0	153.8300	000.0	A
COMMAND	7	159.4125	118.8	151.4450	118.8	A
COMMAND	8	159.3750	118.8	151.3250	118.8	A
AIR TO GROUND	12	159.2700	103.5	159.2700	103.5	A
AIR TO GROUND	13	151.2875	103.5	151.2875	103.5	A
AIR GUARD	16	168.6250	000.0	168.6250	110.9	A
9. Prepared By (Resource Unit Leader)		Approved By (Planning Section Chief)			Date	Time
PATRICK REID		RYAN SCHARNHORST			10/13/2022	0856

Division/Group Assignment List (ICS 204 WF)
Controlled Unclassified Information//Basic

1. Incident Name:		3.				
BOLT CREEK		Branch:		Division/Group		
2. Operational Period:		DAY/NIGHT SHIFT				
Date/Time From: 10/14/2022 0700 FRI		Date/Time To: 10/15/2022 0700 SAT		NIGHT SHIFT		
4. Operations Personnel						
OPERATIONS CHIEF		RYAN NICHOLLS 509-430-1606		PLANNING OPS		WES LONG 360-281-9585
DIVISION/GROUP SUPERVISOR		DJ GOLDSMITH 509-951-8755				
5. Resources Assigned this Period						
Strike Team / Task Force / Resource Designator		LWD	Leader	Number Persons	Drop Off PT./Time	Pick Up PT./Time
O-168 STEN FRANK DAHLQUIST		10/14	425-359-3055	1	ICP/1900	ICP/0700
E-140 ENG5 SNO COUNTY FD #15		10/20	DALTON BAUNSGARD	2	ICP/1900	ICP/0700
E-141 ENG5 SNO COUNTY FD #22		10/21	TYLER BYRD	2	ICP/1900	ICP/0700
E-181 ENG5 WA-OLS		10/22	BLAKE MANN 360-640-3650	4	ICP/1900	ICP/0700
E-188 ENG5 SNOHOMISH FD16		10/22	JADON WYATT NANNERY	3	ICP/1900	ICP/0700
E-189 ENG6 SNOHOMISH FD26		10/22	NOLAN JON HEISEL	2	ICP/1900	ICP/0700
E-192 ENG5 GLACIER PEAK WILDFIRE INC		10/26	CHRIS WHITE	3	ICP/1900	ICP/0700
E-195 ENG5 GLACIER PEAK WILDFIRE INC		10/26	JUSTIN WHITAKER	3	ICP/1900	ICP/0700
E-201 ENG6 WILD FIRE SERVICES INC		10/26	RUBI HERNANDEZ-MARTINEZ	3	ICP/1900	ICP/0700
E-178 AMB2 'AMBO1' 360-219-7608		10/19	JOSHUA CHISNELL	2	ICP/1900	ICP/0700
6. Control Operations/Work Assignments:						
<p>Task: Hold fire from crossing Hwy 2, reinforce primary control lines, provide point protection for values at risk, and maintain patrol status within all divisions (except DIV Z).</p> <p>Purpose: Confine the fire to its current footprint. Limit the impacts of fire spread around infrastructure, structures, timber, and other identified values at risk.</p> <p>End State: Fire is confined to the existing footprint and defensive preparations are in place around all infrastructure and structures.</p>						
7. Special Instructions:						
8. Division/Group Communication Summary						
Function	Channel	RX Frequency N/W	RX Tone/NAC	TX Frequency N/W	TX Tone/NAC	Mode
TACTICAL	1	151.3100	118.8	151.3100	118.8	A
COMMAND	7	159.4125	118.8	151.4450	118.8	A
COMMAND	8	159.3750	118.8	151.3250	118.8	A
AIR TO GROUND	12	159.2700	103.5	159.2700	103.5	A
AIR TO GROUND	13	151.2875	103.5	151.2875	103.5	A
AIR GUARD	16	168.6250	000.0	168.6250	110.9	A
9. Prepared By (Resource Unit Leader)			Approved By (Planning Section Chief)		Date	Time
PATRICK REID			RYAN SCHARNHORST 		10/13/2022	0856

Division/Group Assignment List (ICS 204 WF)
Controlled Unclassified Information//Basic


1. Incident Name:		3.	
BOLT CREEK		Branch:	Division/Group
2. Operational Period:		NIGHT SHIFT	
DAY/NIGHT SHIFT			
Date/Time From: 10/14/2022 0700 FRI	Date/Time To: 10/15/2022 0700 SAT		
4. Operations Personnel			
OPERATIONS CHIEF	RYAN NICHOLLS 509-430-1606	PLANNING OPS	WES LONG 360-281-9585
DIVISION/GROUP SUPERVISOR	DJ GOLDSMITH 509-951-8755		

7. Special Instructions:


- Provide updates directly to the COML.
- COML receives all IWI notifications.
- Provide night watch for helicopter 0NW at Skykomish airport. As necessary, report to Communications at 360-259-7651.

8. Division/Group Communication Summary

Function	Channel	RX Frequency N/W	RX Tone/NAC	TX Frequency N/W	TX Tone/NAC	Mode
TACTICAL	1	151.3100	118.8	151.3100	118.8	A
COMMAND	7	159.4125	118.8	151.4450	118.8	A
COMMAND	8	159.3750	118.8	151.3250	118.8	A
AIR TO GROUND	12	159.2700	103.5	159.2700	103.5	A
AIR TO GROUND	13	151.2875	103.5	151.2875	103.5	A
AIR GUARD	16	168.6250	000.0	168.6250	110.9	A

9. Prepared By (Resource Unit Leader)	Approved By (Planning Section Chief)	Date	Time
PATRICK REID	RYAN SCHARNHORST 	10/13/2022	0856

Division/Group Assignment List (ICS 204 WF)
Controlled Unclassified Information//Basic


1. Incident Name:			3.			
BOLT CREEK			Branch:		Division/Group	
2. Operational Period:			65 ROAD CLOSURE			
DAY/NIGHT SHIFT						
Date/Time From: 10/14/2022 0700 FRI		Date/Time To: 10/15/2022 0700 SAT				
4. Operations Personnel						
OPERATIONS CHIEF		RYAN NICHOLLS 509-430-1606		PLANNING OPS		WES LONG 360-281-9585
DIVISION SUPERVISOR		BRIAN MCNEIL 425-365-6067				
5. Resources Assigned this Period						
Strike Team / Task Force / Resource Designator		LWD	Leader	Number Persons	Drop Off PT./Time	Pick Up PT./Time
ROAD SECURITY (GUARD)		10/22	SARAH LARSEN	1	RD 65/0600	RD 65/2200
ROAD SECURITY (GUARD)		10/22	AVERY PAYNE	1	RD 65/0600	RD 65/2200
ROAD SECURITY (GUARD)		10/22	FRANK ROSCIGNO	1	RD 65/0600	RD 65/2200
6. Control Operations/Work Assignments:						
<ul style="list-style-type: none"> • USFS will provide security to the 65 Road closure. • Assist fire resources working in the area with access around the road closure and direct public traffic past the road closure location. 						
7. Special Instructions:						
If you need access when working in the 65 Road area, or if you have any traffic issues, contact the Forest Service's Guards on Command Channel 8 for assistance.						
8. Division/Group Communication Summary						
Function	Channel	RX Frequency N/W	RX Tone/NAC	TX Frequency N/W	TX Tone/NAC	Mode
TACTICAL	1	151.3100	118.8	151.3100	118.8	A
COMMAND	8	159.3570	118.8	151.3250	118.8	A
9. Prepared By (Resource Unit Leader)			Approved By (Planning Section Chief)		Date	Time
PATRICK REID			RYAN SCHARNHORST 		10/13/2022	0856

INCIDENT RADIO COMMUNICATIONS PLAN (ICS 205)

Controlled Unclassified Information//Basic

1. Incident Name: BOLT CREEK	2. Date/Time Prepared: Date: 10/13/2022 Time: 2000	3. Operational Period: Date/Time From: 10/14/2022 0700 Date/Time To: 10/15/2022 0700	DAY/NIGHT SHIFT FRI SAT
--	---	---	-----------------------------------

4. Basic Radio Channel Use:															
Zone Group	Ch #	Function	Channel Name/Trunked Radio System Talkgroup	Assignment	RX Freq	RX Tone/NAC	TX Freq	TX Tone/NAC	Mode (A, D, or M)	Remarks					
	1	TACTICAL	TAC 1	DIV A	151.3100	118.8	151.3100	118.8	A						
	2	TACTICAL	TAC 2	DIV S	151.3400	118.8	151.3400	118.8	A						
	3	TACTICAL	TAC 3	DIV P	151.2125	118.8	151.2125	118.8	A						
	4	TACTICAL	DNR COM	UNASSIGNED	151.4150	103.5	151.4150	103.5	A	IA USE ONLY					
	5	TACTICAL	REDNET	STRUCTURE	153.8300	000.0	153.8300	000.0	A						
	6	TACTICAL	FS FTAC	UNASSIGNED	168.5625	000.0	168.5625	000.0	A	IA USE ONLY					
	7	COMMAND	CMD 7	ALL DIVS	159.4125	118.8	151.4450	118.8	A	LOCATED NORTH OF INDEX LINKED TO CMD 8					
	8	COMMAND	CMD 8	ALL DIVS	159.3750	118.8	151.3250	118.8	A	LOCATED ON SOBIESKI LINKED TO CMD 7					
	9	COMMAND	SNOHOMIS	FOREST NET	159.4350	141.3	151.1900	141.3	A	DISPATCH CALL SIGN "NW DISPATCH" IA USE ONLY					
	10	COMMAND	SULTAN	FOREST NET	159.2475	141.3	151.1825	141.3	A	DISPATCH CALL SIGN "NW DISPATCH" IA USE ONLY					
	11	COMMAND	SOBIESKI	FOREST NET	169.5750	146.2	164.9625	156.7	A	DISPATCH CALL SIGN "PUGET SOUND" IA USE ONLY					
	12	AIR TO GROUND	DNR A/G1	ALL DIVS	159.2700	103.5	159.2700	103.5	A	PRIMARY A/G					
	13	AIR TO GROUND	DNR A/G2	ALL DIVS	151.2875	103.5	151.2875	103.5	A	SECONDARY A/G					
	14	AIR TO GROUND	A/G 41	UNASSIGNED	167.4750	000.0	167.4750	000.0	A						
	15	AIR TO GROUND	VMED 29	MEDEVAC	155.3475	156.7	155.3475	156.7	A	MEDEVAC					
	16	AIR GUARD	AIRGUARD	EMERGENCY USE	168.6250	000.0	168.6250	110.9	A	EMERGENCY USE					

5. Special Instructions:	
6. Prepared By (Communications Unit Leader)	Name: PAUL CARLYLE Signature: 
ICS 205	IAP Page Date/Time: 10/13/2022 2000

SAFETY MESSAGE/PLAN (ICS 208)

1. Incident Name: BOLT CREEK FIRE	2. Operational Period: Date From: 08/14/22 Time From: 0700	Date To: 08/15/22 Time To: 0700
--	--	------------------------------------

3. Safety Message/Expanded Safety Message, Safety Plan, Site Safety Plan:

Major Hazards & Risks: Driving, Working Along Roadway, Hazard Trees, Steep Terrain, Rolling Material, Rugged Access, Cumulative Fatigue, Heavy Equipment Operations

Human Factor Barriers to Situational Awareness- IRPG page x-xi

- **Distraction from Primary Task**
 - Radio traffic
 - Conflict
 - Previous Errors
 - Collateral Duties
 - Incident Within an Incident

- **Fatigue**
 - Carbon Monoxide
 - Dehydration
 - Heat Stress
 - Poor fitness level
 - Awake for over 24 hours

- **Stress Reaction**
 - Communication deteriorates
 - Habitual or repetitive behavior
 - Target fixation
 - Action Tunneling- ignoring the big picture
 - Accepting increased risk as completion of task gets near

- **Hazardous Attitudes**
 - Invulnerable- It can't happen to us
 - Anti-authority
 - Impulsive
 - Macho
 - Complacent
 - Resigned- we can't make a difference
 - Group think- afraid to speak up or disagree



Be Alert. Keep Calm. Think Clearly. Act Decisively.

4. Site Safety Plan Required? Yes <input type="checkbox"/> No <input checked="" type="checkbox"/>		
Approved Site Safety Plan(s) Located At:		
5. Prepared by: Name: <u>Bonnie Rogers</u> Position/Title: <u>SOFR-T</u> Signature: <u>B. Rogers</u>		
ICS 208	IAP Page <u> </u>	Date/Time: 10/13/2022 10:00 <u> </u>

Bolt Creek Fire Information

Fire Information Line 360-370-4170

Email: 2022.boltcreek@firenet.gov

These are for public information AND to email photos & videos to us!

Text your fire photos and short videos to 360-259-5006

Facebook Page

[Bolt Creek Fire Information | Facebook](#)

Inciweb

<https://inciweb.nwccg.gov/incident/8417/>

Did you lose or find something? The PIO booth in the corner of the Incident Command Post is the place for Lost and Found. Be prepared to describe what you are looking for. If you're turning something in, please give us time and location of what you found.

Need to mail something? Drop it by the PIO booth and we will drop it in a mailbox for you.

1. Incident Name: BOLT CREEK
ICP – Evergreen State Fairgrounds

2. Operational Period: Date: 10/09/22 - 10/10/22
From: 0700-0700

3. Basic Local Communications Information:

Name	Incident Assigned Position	Cell Phone Number / Email Address
Communications Unit		360-259-7651
Finance Section		360-481-7668
Information Officer		360-259-5006
Medical Unit		360-259-6737
Ordering Unit		360-481-0718
Planning Section		360-481-5153
Safety Officer		360-259-9535

4. Prepared by: Name: Ryan Scharnhorst Position/Title: PSC3 Signature: _____

--	--	--

Bolt Creek Fire

Logistics Information

Base Camp Operating

Quiet Hours	2200 – 0500
Supply	0600 – 2100
Food	0600 - 0900 and 1730 – 2100
Medical Tent	0600 – 2100 (available 24 hours – after posted hours, please call the number posted on the medical Yurt.)
Refer Van	0600 – 2000 for lunch and ice pick-ups
Showers	05:30 – 1200 and 1500 – 2200
Supply	0600 – 2100
Laundry	Drop off clothes to Supply by <u>0830</u> hrs. Expect a 48-hour turn-around. Pick-up for laundry will be at Supply.
Supply Orders	All supply orders need to be into the logistics by <u>1800</u> hrs. for Next-day delivery.

NOTE: All equipment and Overhead request have a 48-hour lag time.

Code of Conduct Incident Personnel



Each individual on this incident is responsible for:

- 🔧 Being *ready and able* to perform their assigned duties effectively.
- 🔧 Conducting themselves in a manner that treats people with dignity, equality, courtesy, and respect.
- 🔧 Abiding by agency ethics and conduct regulations.
- 🔧 Reporting any harassment or other inappropriate behavior.

Each individual of this incident has the right to:

- 🔧 Work in an environment characterized by safe work practices.
- 🔧 Work in a fair and harassment free environment.
- 🔧 Say “No” to unwelcome advances or requests for favors.
- 🔧 File complaints or grievances through appropriate avenues.

There is zero tolerance for inappropriate behavior while assigned to the incident, including:

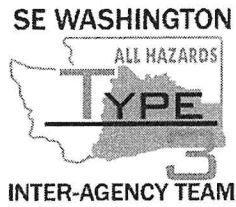
- 🔧 Illegal drug use
- 🔧 Alcohol use
- 🔧 Unsafe work practices and activities
- 🔧 Discrimination
- 🔧 Sexual harassment
- 🔧 Fighting, threatening, and abusive behaviors
- 🔧 Using social media and electronic communication devices for personal business while engaged in fire assignment duties.
- 🔧 Other violations of Fire Service, Washington DNR, and Federal agency standards of conduct.

Failure to adhere to the Code of Conduct could result in dismissal from the incident, with notification to your home unit.

The public expects our best efforts; they see us as professionals in what we say and do. Let's continue to show them we are!

DNR/DOC Camp Crew Guidelines	1. Incident Name	2. Date Prepared	3. Time Prepared
<p><u>ALL PERSONNEL WORKING AROUND OFFENDERS/DNR KITCHENS</u></p> <p><i>This message is from the Department of Natural Resources and Department of Corrections.</i></p> <ul style="list-style-type: none"> ▶ No person shall be allowed to carry firearms in the area where offenders are working. It is acceptable to secure weapons in vehicles while entering into the working vicinity of offenders. ▶ Do not give or take anything from an offender. Offenders are identified by red ball caps or red hard hats. ▶ <u>Do NOT</u> take photos or interview offenders without approval from the DNR Inmate Liaison. ▶ <u>Do not do any favors for offenders.</u> (Examples: passing on a message, giving tobacco, asking for change, mailing a letter, using a phone. The most innocent act/favor can have consequences that could affect an offender for years.) ▶ Report any suspicious act to the Supervisor, DOC Staff or Inmate Liaison. ▶ Offenders are not allowed to use tobacco products. <u>Do not use tobacco products in or around kitchen area.</u> ▶ Offenders on DNR Crews have committed various crimes. They <u>ARE</u> considered minimum level custody. ▶ Treat Offenders with respect, but <u>don't get personal</u>. Practices the correctional distance...<u>don't get personal</u>. Offenders generally feel good with being part of the fire suppression effort; treat them with the same respect and dignity as other fire fighters but, <u>DON'T GET PERSONAL</u>. ▶ Offenders are trained in their job assignments and their work ethics. They are held accountable for their job performance and their behavior. ▶ Acknowledge crews for a job well done; offenders do good work and appreciate the recognition. ▶ Offenders need good professional role models as part of their rehabilitation process. Consider their presence and set good examples by the context of your conversation and choice of language used. 			
<p>9. Prepared by (Name and Position)</p>			

NOTE PAGE



BOLT CREEK FIRE

ANDY PALMER/DUTCH CREEK EMERGENCY MEDICAL EVACUATION TIMES

LEADER’S INTENT: To establish **approximate** travel times from key areas of the fire to Skykomish Airport, as well as area hospitals by ground transportation. See Medical Plan (ICS206) for travel times via air and Heli spot Lat and Long. Not all DPs are on the chart. Travel times are approximate, and one should always consider weather, time of day, traffic, and road/trail conditions.

Ground Transport Only	Skykomish Airport	Evergreen Health Monroe	Providence Medical Center (Everett)	Harborview Medical Center (Seattle)
DP-10 (Beckler River CG)	4 Mins	50 Mins	1 Hr 10 Mins	1 Hr 30 Mins
DP-20 (FS-65 and HWY 2)	2 Mins	45 Mins	1 Hr 5 Mins	1 Hr 25 Mins
DP-30 (Smokey’s)	2 Mins	45 Mins	2 Hr 5 Mins	1 Hr 25 Mins
DP-50 (Grotto)	8 Mins	40 Mins	1 Hr	1 Hr 20 Mins
DP-68 (Jim’s Place)	15 Mins	40 Mins	1 Hr	1 Hr 20 Mins
DP-90 (Railroad)	11 Mins	35 Mins	1 Hr	1 Hr 20 Mins
DP-100 (Halford)	12 Mins	35 Mins	1 Hr	1 Hr 20 Mins
DP-102 (120 Spur Rd)	30 Mins	45 Mins	1 Hr	1 Hr 20 Mins
DP-105 (63 Rd and 210)	25 Mins	40 Mins	1 Hr	1 Hr 20 Mins
H-30 (Station 54)	25 Mins	30 Mins	50 Mins	1 Hr 10 Mins
H-67 (Parking Lot)	20 Mins	30 Mins	55 Mins	1 Hr 10 Mins

Study your map. Know where you are working. Know where your medical resources are located today. Situational awareness is your job.

Please provide additional relevant drive times information to SOF2s at ICP in order to populate this table more thoroughly. Help us help you in your time of need.

MEDICAL PLAN (ICS 206 WF)

1. Incident/Project Name				2. Operational Period			
Bolt Creek				Date/Time: 10/14/2022-10/15/2022			
3. Ambulance Services							
Name	Complete Address	Phone	Advanced Life Support (ALS)				
			YES	NO			
Sky Valley Fire #54	42013 State HWY 2-Gold Bar	911	X				
Sultan Fire #51	32905 Cascade View Dr	911		X			
Skykomish FD #50	105 E Old Cascade HWY	911		X			
4. Air Ambulance Services							
Name	Phone	Type of Aircraft & Capability					
Airlift Northwest	911 (800-426-2430)	Rotor					
Life Flight	911 (800-232-0911)	Rotor					
5. Hospitals							
Name Complete Address	Degrees Decimal Minutes	Travel Time From ICP		Phone	Helipad		Level of Care Facility
Evergreen Health Monroe 14701 179 th Ave SE Monroe, WA	Lat: N/A	N/A	5 MIN	425-877-9371		X	Level 4
	Long: N/A						
Providence Medical Center 1321 Colby Ave Everett, WA	Lat: 47° 59' 58.5" N	10 MIN	25 MIN	425-404-5601	X		Level 2
	Long: 122° 12' 21.5" W						
Harborview Medical 325 9 th Ave Seattle, WA	Lat: 47° 36' 10.8" N	15 MIN	60 MIN	206-744-3000	X		Level 1 Trauma Burn Center
	Long: 122° 19' 29.6" W						
DIVISIONS							
ICP	EMS Responders:			Zebron Watts MEDL W-360-259-6737 C 541-270-4131			
DIV A	EMS Responders & Capabilities:			Medic-Remington Becker			
	Medical Emergency Channel:			Command			
	Air / Ground			15 Minutes / 65 Minutes			
	Approved Heli Spot:			Skykomish Airport			
	Lat:			47° 42' 38" N			
	Long:			121° 20' 25" W			
DIV P	EMS Responders & Capabilities:			AMBO 2-Trevor Stanley			
	Medical Emergency Channel:			Command			
	Air / Ground			15 Minutes / 55 Minutes			
	Approved Heli Spots:			NONE IN THIS DIVISION			
DIV S	EMS Responders & Capabilities:			Medic-Angel Thorsvold / EMTF-Christy Field			
	Medical Emergency Channel:			Command			
	Air / Ground			15 Minutes / 50 Minutes			
	Approved Heli Spot:			H-67 (Parking Lot)	H-30 (Station 54)		
	Lat:			47° 49' 07" N	47° 50' 31" N		
	Long:			121° 33' 13" W	121° 40' 06" W		
DIV Z	NOT STAFFED WITH MEDICAL PERSONNEL						
STRUCTURE	NOT STAFFED WITH MEDICAL PERSONNEL						
NIGHT SHIFT	EMS Responders & Capabilities:			AMBO 1-Josh Chisnell			
	Medical Emergency Channel:			Command			
	Approved Heli Spots			Skykomish Airport	H-67 (Parking Lot)	H-30 (Station 54)	
	Lat:			47° 42' 38" N	47° 49' 07" N	47° 50' 31" N	
	Long:			121° 20' 25" W	121° 33' 13" W	121° 40' 06" W	
Prepared by (Medical Unit Leader)			Date:	Reviewed By (Safety Officer)			Date:
Chloe Read MEDL(t) <i>Chloe Read</i>			10/13/22	Ken Foss SOFR <i>Ken Foss</i>			10/13/22

MEDICAL PLAN (ICS 206 WF)

Controlled Unclassified Information//Basic

Medical Incident Report

FOR A NON-EMERGENCY INCIDENT, WORK THROUGH CHAIN OF COMMAND TO REPORT AND TRANSPORT INJURED PERSONNEL AS NECESSARY.

FOR A MEDICAL EMERGENCY: IDENTIFY ON SCENE INCIDENT COMMANDER BY NAME AND POSITION AND ANNOUNCE "MEDICAL EMERGENCY" TO INITIATE RESPONSE FROM IMT COMMUNICATIONS/DISPATCH.

Use the following items to communicate situation to communications/dispatch.

1. CONTACT COMMUNICATIONS / DISPATCH (Verify correct frequency prior to starting report)

Ex: "Communications, Div. Alpha. Stand-by for Emergency Traffic."

2. INCIDENT STATUS: Provide incident summary (including number of patients) and command structure.

Ex: "Communications, I have a Red priority patient, unconscious, struck by a falling tree. Requesting air ambulance to Forest Road 1 at (Lat./Long.) This will be the Trout Meadow Medical, IC is TFLD Jones. EMT Smith is providing medical care."

Severity of Emergency / Transport Priority	<input type="checkbox"/> RED / PRIORITY 1 Life or limb threatening injury or illness. Evacuation need is IMMEDIATE <i>Ex: Unconscious, difficulty breathing, bleeding severely, 2° – 3° burns more than 4 palm sizes, heat stroke, disoriented.</i> <input type="checkbox"/> YELLOW / PRIORITY 2 Serious Injury or illness. Evacuation may be DELAYED if necessary. <i>Ex: Significant trauma, unable to walk, 2° – 3° burns not more than 1-3 palm sizes.</i> <input type="checkbox"/> GREEN / PRIORITY 3 Minor Injury or illness. Non-Emergency transport <i>Ex: Sprains, strains, minor heat-related illness.</i>	
Nature of Injury or Illness & Mechanism of Injury		<i>Brief Summary of Injury or Illness (Ex: Unconscious, Struck by Falling Tree)</i>
Transport Request		<i>Air Ambulance / Short Haul/Hoist Ground Ambulance / Other</i>
Patient Location		<i>Descriptive Location & Lat. / Long. (WGS84)</i>
Incident Name		<i>Geographic Name + "Medical" (Ex: Trout Meadow Medical)</i>
On-Scene Incident Commander		<i>Name of on-scene IC of Incident within an Incident (Ex: TFLD Jones)</i>
Patient Care		<i>Name of Care Provider (Ex: EMT Smith)</i>

3. INITIAL PATIENT ASSESSMENT: Complete this section for each patient as applicable (start with the most severe patient)

Patient Assessment: See IRPG page 106

Treatment:

4. TRANSPORT PLAN:

Evacuation Location (if different): (Descriptive Location (drop point, intersection, etc.) or Lat. / Long.) Patient's ETA to Evacuation Location:

Helispot / Extraction Site Size and Hazards:

5. ADDITIONAL RESOURCES / EQUIPMENT NEEDS:

Example: Paramedic/EMT, Crews, Immobilization Devices, AED, Oxygen, Trauma Bag, IV/Fluid(s), Splints, Rope rescue, Wheeled litter, HAZMAT, Extrication

6. COMMUNICATIONS: Identify State Air/Ground EMS Frequencies and Hospital Contacts as applicable

Function	Channel Name/Number	Receive (RX)	Tone/NAC *	Transmit (TX)	Tone/NAC *
COMMAND					
AIR-TO-GRND					
TACTICAL					

7. CONTINGENCY: Considerations: If primary options fail, what actions can be implemented in conjunction with primary evacuation method? Be thinking ahead.

8. ADDITIONAL INFORMATION: Updates/Changes, etc.

REMEMBER: Confirm ETA's of resources ordered. Act according to your level of training. Be Alert. Keep Calm. Think Clearly. Act Decisively.