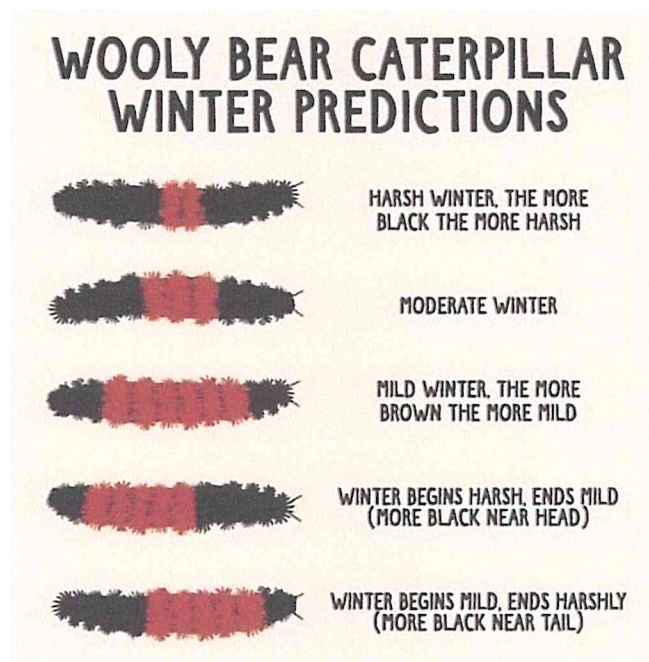


INCIDENT ACTION PLAN

BOLT CREEK

WA-NWS-150
PN P14322(1522)

Sunday


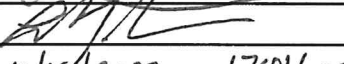


OPERATIONAL PERIOD

10/16/2022 0700
to
10/17/2022 0700




INCIDENT OBJECTIVES (ICS 202)

1. Incident Name:		2. Operational Period: DAY/NIGHT SHIFT	
BOLT CREEK		Date/Time From: 10/16/2022 0700 SUN	Date/Time To: 10/17/2022 0700 MON
3. Objective(s):			
Management Objectives			
<ul style="list-style-type: none"> Provide for firefighter and public safety using ongoing risk analysis and reasonable mitigation of identified hazards. Minimize impacts to communities and infrastructure, and minimize acres burned on private lands along Highway 2 corridor. Maintain and enhance relationships with cooperators, stakeholders, landowners, and communities. Provide accurate and timely information to the public. Protect tribal, cultural, aquatic, and wildlife resources and sensitive plant sites by coordinating with Resource Advisors. Treat each other with dignity and respect and act professionally on the fire and in the community. Manage costs commensurate with values at risk and update Agency Administrators daily. 			
Control Objectives			
<ul style="list-style-type: none"> Maintain the fire north of Highway 2 utilizing the existing suppression strategy to stop the fire spread to at-risk values. To control fire, utilize complete suppression and point protection strategies in areas around structures and values. Keep fire east of Index-Galena Road (FR63) and west of Beckler Creek Road (FR65). Continue to monitor the fire in the wilderness, only taking action to maintain a fire within the identified east/west parameters. 			
4. Operational Period Command Emphasis:			
<ul style="list-style-type: none"> Provide a positive presence to the community and the public impacted by the fire. As the safety of personnel is our highest priority, continually use a deliberate analysis of risk as you engage the fire. <p>Communicating the risks and problems you identify and considering the actions you can take to improve or manage the issue is crucial.</p> <ul style="list-style-type: none"> Review your LCES in all areas of your work environment. Take 10 minutes as a crew to review your communications in the work area, identify escape routes that will lead you to safety if conditions change, and evaluate the safety zones to ensure they are adequate for you, your crew, and other resources. Be aware of values at risk inside and adjacent to the fire perimeter. Engage and suppress fire when safe, and employ appropriate tactics for the situation. 			
General Situational Awareness:			
See attached Fire Weather.			
Expect increased traffic on Hwy 2. Use spotters and additional lookouts. Avoid placing personnel or equipment on the roadway unless necessary.			
5. Site Safety Plan Required? Yes <input type="checkbox"/> No <input checked="" type="checkbox"/>			
Approved Site Safety Plan(s) Located			
6. Incident Action Plan (the items checked below are included in this Incident Action Plan):			
<input checked="" type="checkbox"/> ICS 202	<input type="checkbox"/> ICS 207	Other Attachments:	
<input checked="" type="checkbox"/> ICS 203	<input type="checkbox"/> ICS 208	<input checked="" type="checkbox"/> SAFETY	
<input checked="" type="checkbox"/> ICS 204	<input type="checkbox"/> ICS 220	<input checked="" type="checkbox"/> INFORMATION MESSAGE	
<input checked="" type="checkbox"/> ICS 205	<input checked="" type="checkbox"/> Map/Chart	<input checked="" type="checkbox"/> ICS 214 - UNIT LOG	
<input checked="" type="checkbox"/> ICS 205A	<input checked="" type="checkbox"/> Weather Forecast/Tides/Currents	<input checked="" type="checkbox"/> CODE OF CONDUCT	
<input checked="" type="checkbox"/> ICS 206			
7. Prepared by: RYAN SCHARNHORST	Position/Title: PSC3	Signature: 	
8. Approved by Incident Commander:	Name: LEONARD JOHNSON	Signature: 	
ICS 202	IAP Page	Date/Time: 10/15/2022 1741hrs	

FINAL

Page 1 of 1

ORGANIZATION ASSIGNMENT LIST (ICS 203)

1. Incident Name:		2. Operational Period: DAY/NIGHT SHIFT	
BOLT CREEK		Date/Time From: 10/16/2022 0700	Date/Time To: 10/17/2022 0700
		SUN	MON
3. Incident Commander(s) and Command Staff:		7. Operations Section:	
IC/UC	LEONARD JOHNSON 360-581-9672	OPS SECTION CHIEF	RYAN NICHOLLS 509-430-1606
DEPUTY IC	WALTER ESCOBAR 509-398-1222	PLANNING OPS	WES LONG 360-281-9585
INFORMATION OFFICER	KAREN SARGEANT 509-885-0067 DONALD FERGUSON 360-259-5006		
INFORMATION OFFICER	JOSIE WILLIAMS (V) 425-647-1872	DIVISION/GROUP	A
LIAISON OFFICER	TIM MCKERN (V) 360-463-2767 DAN SMITH (V) 360-340-4386 (T)	DIVISION/GROUP	P
SAFETY OFFICER	KEN FOSS 253-318-2678	DIVISION/GROUP	S
4. Agency/Organization Representative(s):		DIVISION/GROUP	Z
Agency/Organization	Name	DIVISION/GROUP	(UNSTAFFED)
DNR- NW REGION ADMIN	JAY S GUTHRIE LAURIE BERGVALL (ACT)	DIVISION/GROUP	FIRING GROUP
DNR - NW REGION REP	SHANNON CLARK	DIVISION/GROUP	STRUCTURE
USFS MSF / AA	JEFF MARSZAL BRYAN MCNEIL (ACT)	DIVISION/GROUP	NIGHT
WA STATE PATROL	LT. DEION GLOVER	DIVISION/GROUP	65 ROAD CLOSURE
BNSF	RYAN KUBO		
SNOHOMISH CO DEM	JARROD DIBBLE	7b. Air Operations Branch:	
KING CO DEM	ALYSHA KAPLAN	AIR OPS BRANCH DIRECTOR	
SNOHOMISH CO SHERIFF	LT. MIKE MARTIN	AIR ATTACK SUPERVISOR	
KING CO SHERIFF	CAPT. PETER HORVATH	AIR SUPPORT SUPERVISOR	
SKY VALLEY FD #26	CHIEF ERIC ANDREWS	8. Finance/Administration Section:	
SKYKOMISH FD #50	CHIEF JAMES KNISLEY	CHIEF	PAULA JAMES 808-298-1386
USFS LEAD READ	MATT KENNEY	PTRC	JANET MCINTOSH
5. Planning Section:		TIME UNIT	
CHIEF	RYAN SCHARNHORST 509-432-1016	PROCUREMENT UNIT	ROBERT THOMPSON
INCIDENT METEOROLOGIST	LISA KRIEDERMAN 240-778-5298	PHONE NUMBERS ARE NOT PUBLISHED FOR THE PUBLIC	
SITUATION UNIT	DAVID WINTER 509-301-2631	*****PLEASE DO NOT GIVE ANY OF THESE NUMBER OUT TO THE PUBLIC	
FIRE BEHAVIOR ANALYST	STEVE ZIEL 541-890-6862		
GIS SPECIALIST	RACHEL ARMSTRONG (V)		
6. Logistics Section:			
CHIEF	CINDY PRESTON 509-607-9724		
DEPUTY	JOSH AMBROSE 360-310-0401		
COMMUNICATIONS UNIT			
BASE CAMP MGR	CODY TOPPING		
EQUIPMENT	CAMERON ESKEBERG		
MEDICAL UNIT	ZEBRON WATTS 541-270-4131		
CAMP SECURITY	JAMES GREEN 360-519-9932 (DAY) CHAD RIGGIN (NIGHT)		
9. Prepared By:		Position/Title:	Signature:
Name: RYAN SCHARNHORST		PSC3	
ICS 203	IAP Page	Date/Time: 10/14/2022 2332	



INCIDENT Weather Forecast

FORECAST NO: 29
PREDICTION FOR: 0700 - 0700
SHIFT DATE: Sunday, October 16, 2022
FORECAST ISSUED: 1700 PDT Oct 15, 2022

NAME OF FIRE: Bolt Creek
UNIT: WA-NDC
SIGNED: *Lisa Kriederman*
Incident Meteorologist

***** RED FLAG WARNING IN EFFECT THROUGH 1700 TODAY *****

WEATHER DISCUSSION: Critical fire weather conditions will persist through the morning, then slowly recede. Poor humidity recovery this morning and continued east winds will bring another near record warm and dry day. Winds will be strongest in the morning, then have a slow weakening trend through the day. Watch for east-west aligned terrain to help funnel these winds. Slight relief in temperature and humidity will come Monday, while winds will be much lighter.

WEATHER FORECAST:

WEATHER: Sunny and breezy.

MAX TEMPERATURES: 72 to 78 ridges and upper slopes; 80 to 87 lower slopes and valleys.

MIN HUMIDITY: 18 to 25 percent.

20 FT WINDS:

RIDGETOP - On ridges above 3000 ft: East-southeast 15 to 25 mph with gusts 30 mph until 1000, then southeast 12 to 17 mph with gusts to 25 mph until 1400, then south-southeast 10 to 13 mph with gusts to 20 mph. On ridges below 3000 ft, speeds will be ~5 mph less than stated above.

SLOPE/VALLEY - East winds 8 to 14 mph with gusts 20 to 25 mph until 1000 (except 4 to 6 with gusts to 10 along Highway 2 under the morning inversion), becoming 5 to 8 mph with gusts to 20 mph until 1400, then southeast 4 to 7 mph with gusts to 10 mph. Some higher gusts possible around Skykomish/DP30, and out of Barclay Creek rounding Heybrook Ridge in the morning.

HAINES INDEX: 6 (High)

INVERSION: Very weak below 1000 ft, lifting by 1000.

OUTLOOK FOR TONIGHT: Clear. Low temperatures in the low to mid 50s. Max humidity 45 to 55 percent above 2000 ft, 60 to 75 percent below. Winds: Elevations above 3000 ft... Southeast wind 8 to 12 mph with gusts to 20 mph until midnight, then 3 to 6 mph. Below 3000 ft and in the valleys... East winds 3 to 6 mph.

OUTLOOK FOR MONDAY:

WEATHER: Sunny.

TEMPERATURES: 69 to 75 ridges and upper slopes; 75 to 80 lower slopes and valleys.

HUMIDITY: 32 to 40 percent.

20 FT WINDS:

RIDGETOP - East 4 to 6 mph until 1200, then southwest 4 to 6 mph.

SLOPE/VALLEY - East winds 2 to 4 mph until 1100, becoming West 2 to 4 mph with gusts to 7 by 1300.

HAINES INDEX: 5 (Moderate)

INVERSION: Weak, lifting between 1100 and 1300.

EXTRA INFORMATION:

Sunrise: 0726

Sunset: 1815

Fire Behavior Forecast # 07

Name of Incident: Bolt Creek	Administrative Unit: WA-NWS
Date & Time Issued: October 15, 2022 @ 1900	Operational Period: DAY/NIGHT 10/16-17/2022 (0700-0700)
FBAN: Steve Ziel	Signed: /z/ <i>[Signature]</i>

Assumptions: *Continuing from yesterday... RED FLAG WARNING for moderate winds and low relative humidity through 1700 today. We have all the ingredients for a prolonged period of very active fire behavior due to low RH, abundant dry fuels, and numerous heat sources across a large area. Expect favorable burning conditions throughout the day. Accelerated drying has occurred due to very low day/night relative humidity, fire activity may extend through the period with forecast conditions. The combination of wind, temperature, humidity, and a heat source may result in very active fire spread.*

Weather Summary

*See attached Fire Weather Forecast

Fire Behavior Summary

Fuels in the fire area are primarily composed of *Timber Litter*, and *Timber with Understory*. Primary tree species include mixed sizes of Douglas Fir, Western Hemlock, with scattered cedar. Local timber litter is compact to fluffy with green moss. Shrub and understory species include mixed hardwoods, and dog-hair conifer thickets. Large snags and heavy fuel concentrations are common throughout all areas. Live woody fuels are marginally contributing to fire rate of spread and fire intensity. Fuel conditions change by elevation, and aspect. Low crown base height (ladder fuels) and thick moss are present in most of the timbered areas. **Lots of hardwood leaf litter.**

Today's potential fire behavior will likely include areas transitioning from smoldering/creeping to areas of active surface fire spread with flare ups and occasional torching. Primary spread mechanism will include wind affected surface fire. Wind/slope alignment on slopes and along drainages may contribute to flare ups with torching and short head fire runs with spotting. Fire activity may extend through the night with low RH and wind. Resistance to suppression efforts may be challenged due to wind driven high intensity fire behavior. Very high re-burn potential is patchy/lightly burned areas. Moss may contribute to torching and spotting.

* **Fine fuel moisture= 5%-7%, 1000hr. moisture=12%, Woody fuels 190%, Probability of Ignition-60%-80%**

Fuel Type	Rate of Spread	Flame Length	Spotting Distance	25 MPH Gusts FPM / FL
... If your work area includes -	(CH/HR = FPM)	Feet		
Timber Litter (TL5) Heavy	3-5	2	0.4 mi.	6-8 / 2-3'
Timber w/ Understory (TU5) Heavy	6-8	6-8	0.4 mi.	10-12 / 7-9'
Timber w/ Understory (TU2) Moderate	7-9	3-4	0.4 mi.	15-20 / 4-5'

Specific Assignments:

- Div. A** – Monitor fire activity on lower slopes for flare-ups. Expect increased activity in freshly burned areas north of Skykomish for due to river flow winds. Expect more active flare ups at Eagle Cr. and Beckler River, and SW/SW Sec. 6 below 6510.
- Div. S** – Monitor flanking/backing on Heybrook Ridge, and 6022 Rd. (Sec. 26), and increased activity in lower Barclay Creek (Sec. 35).
- Div. P** – Monitor increasing east wind flow. Expect areas of re-burn. Expect rolling materials on steep slopes above Hwy. 2.

Air Operations: May be impacted by dense smoke downwind of active fire areas (horizontal column). Expect wind channeling.

Safety

It's a HEAD's-UP day for fire behavior.....Excellent day to review the back cover of your IRPG – ensure the STANDARD FIREFIGHTING ORDERS are followed, and WATCHOUT SITUATIONS are understood. Potential for very active fire behavior today. Lots of fresh faces on the fire – share what you have observed.

It's a HEAD's-UP day for fire behavior.....Excellent day to review the back cover of your IRPG – ensure the STANDARD FIREFIGHTING ORDERS are followed, and WATCHOUT SITUATIONS are understood. Potential for very active fire behavior today. Lots of fresh faces on the fire – share what you have observed.

*Today's Fire Behavior Forecast contains 620 words (-61 from previous) written for your situational awareness.

IAP

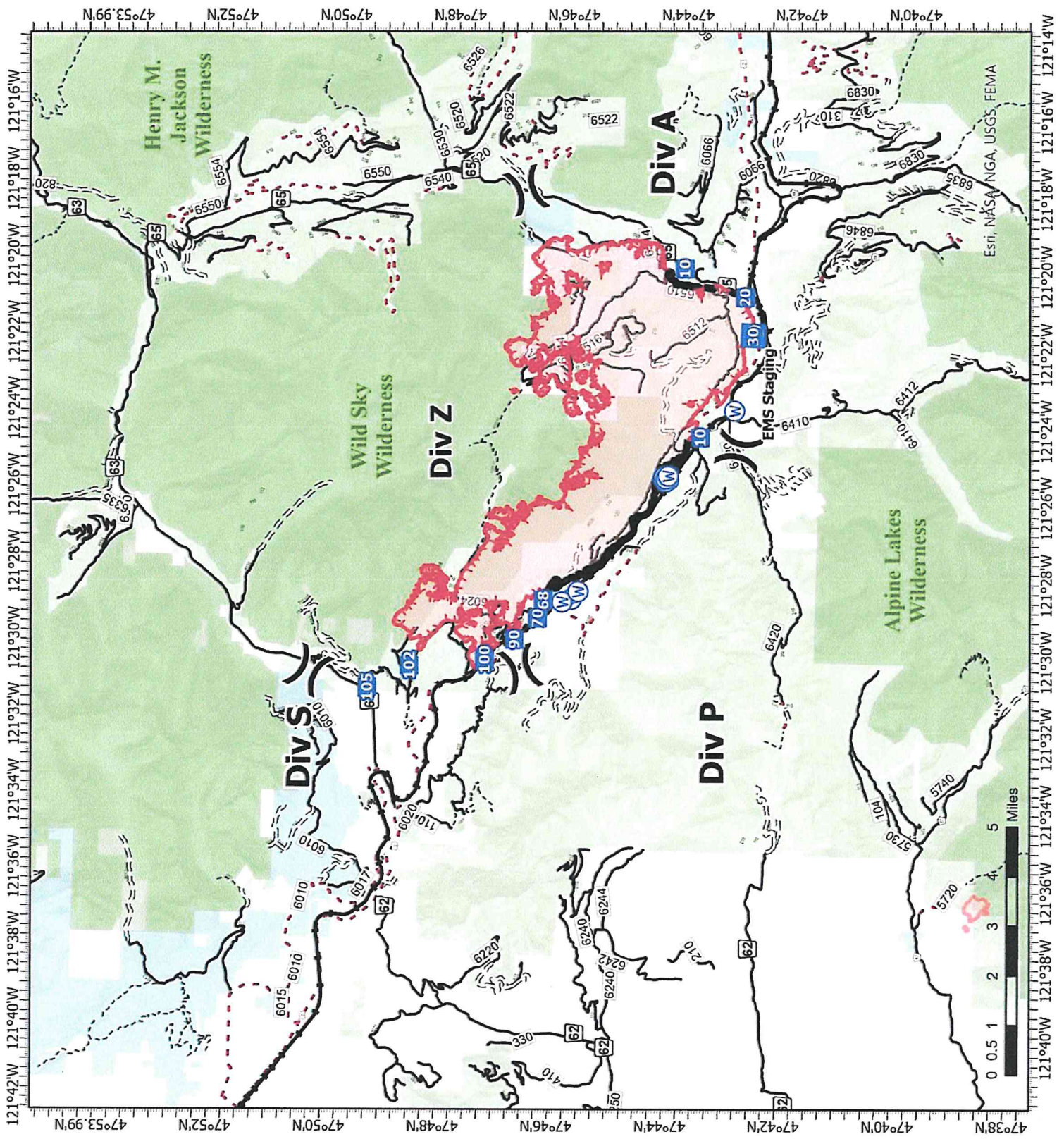
Bolt Creek
WA-NWS-000150
10/16/2022

14,068 acres at 10/13/2022 @ 1958

- X Division Break
- Medical
- Drop Point
- Water Source
- Contained
- Uncontained
- Bureau of Land Management (BLM)
- State
- US Forest Service (USFS)
- Private
- Undetermined
- Railroads
- Open Roads
- Closed Roads
- Decommissioned Roads
- Decommissioned Roads
- Trail
- Wilderness



Map updated:
10/15/2022 1846



Division/Group Assignment List (ICS 204 WF)
Controlled Unclassified Information//Basic

1. Incident Name:				3.		
BOLT CREEK				Branch:	Division/Group A	
2. Operational Period: DAY/NIGHT SHIFT						
Date/Time From: 10/16/2022 0700 SUN		Date/Time To: 10/17/2022 0700 MON				
4. Operations Personnel						
OPERATIONS CHIEF		RYAN NICHOLLS 509-430-1606		PLANNING OPS		WES LONG 360-281-9585
FIELD OPS				DIVISION/GROUP SUPERVISOR		KENNETH JOHNSON 509-496-5452
5. Resources Assigned this Period						
Strike Team / Task Force / Resource Designator		LWD	Leader	Number Persons	Drop Off PT./Time	Pick Up PT./Time
C-21 CRW2 NORTH PACIFIC FORESTRY INC.		10/26	JESUS CHIPREZ	20	ICP/0700	ICP/1900
O-211 FMOD BAILEY LOGGING		10/18	BEN A NEWMAN	2	ICP/0700	ICP/1900
O-244 FMOD LL MEADOW WILDFIRE INC.		10/26	RICK WARD	2	ICP/0700	ICP/1900
E-179 CHP2 ROAD HOME, INC.		10/20	ANDREW GIBBS	2	ICP/0700	ICP/1900
***O-224 STEN BRIAN WESEMANN 360-749-6128		10/22		1	ICP/0700	ICP/1900
E-130 ENG6 LATE SUMMERS WILDFIRE		10/22	JENSEN BOVEE	3	ICP/0700	ICP/1900
E-131 ENG3 MEADOW WILDFIRE		10/27	GUS SCHALO	3	ICP/0700	ICP/1900
E-133 ENG5 RAINIER WILDFIRE		10/23	SPENCER SHAW	3	ICP/0700	ICP/1900
E-134 ENG NORTHRIDGE WILDFIRE		10/24	BRITTANY NORDHAGEN	3	ICP/0700	ICP/1900
E-135 ENG RAINIER WILDFIRE		10/20	MICHAEL SUTTON	3	ICP/0700	ICP/1900
O-265 STEN BRENDA RODGERS		10/29	509-578-9318	1	ICP/0700	ICP/1900
E-136 ENG6 LIBERTY WILDFIRE, INC.		10/21	EDWARD KENNEY	3	ICP/0700	ICO/1900
E-197 ENG6 METHOW RIVER WILD FIRE		10/26	JEFF HERRON	3	ICP/0700	ICP/1900
E-209 ENG4 CHEWACK WILDFIRE INC		10/27	GREG ISAAC	3	ICP/0700	ICP/1900
E-143 WTS2 SKYKOMISH FIRE		10/25	ROBERT CAMPBELL	1	ICP/0700	ICP/1900
8. Division/Group Communication Summary						
Function	Channel	RX Frequency N/W	RX Tone/NAC	TX Frequency N/W	TX Tone/NAC	Mode
TACTICAL	1	151.3100	118.8	151.3100	118.8	A
COMMAND	7	159.4125	118.8	151.4450	118.8	A
COMMAND	8	159.3750	118.8	151.3250	118.8	A
AIR TO GROUND	12	159.2700	103.5	159.2700	103.5	A
AIR TO GROUND	13	151.2875	103.5	151.2875	103.5	A
AIR GUARD	16	168.6250	000.0	168.6250	110.9	A
9. Prepared By (Resource Unit Leader)			Approved By (Planning Section Chief)		Date	Time
			RYAN SCHARNHORST		10/15/2022	2332

Division/Group Assignment List (ICS 204 WF)
Controlled Unclassified Information//Basic

1. Incident Name:				3.		
BOLT CREEK				Branch:	Division/Group A	
2. Operational Period: DAY/NIGHT SHIFT						
Date/Time From: 10/16/2022 0700 SUN		Date/Time To: 10/17/2022 0700 MON				
4. Operations Personnel						
OPERATIONS CHIEF	RYAN NICHOLLS 509-430-1606			PLANNING OPS	WES LONG 360-281-9585	
FIELD OPS				DIVISION/GROUP SUPERVISOR	KENNETH JOHNSON 509-496-5452	
5. Resources Assigned this Period						
Strike Team / Task Force / Resource Designator	LWD	Leader	Number Persons	Drop Off PT./Time	Pick Up PT./Time	
O-240 SOFR RYAN GRANT 509-254-1672	10/27		1	ICP/0700	ICP/1900	
O-255 EMPF JOEL BOWER	10/27	360-461-7390	1	ICP/0700	ICP/1900	
6. Control Operations/Work Assignments:						
<p>Task: Hold fire from crossing Hwy 2, reinforce primary control lines, and maintain patrol status within the division. Maintain IA readiness.</p> <p>Purpose: Confine the fire to its current footprint. Limit the impacts of fire spread around infrastructure, structures, timber, and other identified values at risk.</p> <p>End State: Fire is confined to the existing footprint and defensive preparations are in place around all infrastructures and structures.</p>						
7. Special Instructions:						
<p><u>Special Notice: STEN and engines with astricts (***) next to their resource number are part of the Strike Team that will be used for IA.</u></p> <ul style="list-style-type: none"> • Utilize Field Maps and Avenza to input suppression repair needs. • Text weather to IMET at 240-778-5298 at 1400 hours. • Notify WA DOT of trees or debris falling on the highway. • When addressing road hazards, utilize a vehicle equipped with emergency warning lights after blocking the roadway. 						
8. Division/Group Communication Summary						
Function	Channel	RX Frequency N/W	RX Tone/NAC	TX Frequency N/W	TX Tone/NAC	Mode
TACTICAL	1	151.3100	118.8	151.3100	118.8	A
COMMAND	7	159.4125	118.8	151.4450	118.8	A
COMMAND	8	159.3750	118.8	151.3250	118.8	A
AIR TO GROUND	12	159.2700	103.5	159.2700	103.5	A
AIR TO GROUND	13	151.2875	103.5	151.2875	103.5	A
AIR GUARD	16	168.6250	000.0	168.6250	110.9	A
9. Prepared By (Resource Unit Leader)			Approved By (Planning Section Chief)		Date	Time
			RYAN SCHARNHORST		10/15/2022	2332

Division/Group Assignment List (ICS 204 WF)
Controlled Unclassified Information//Basic

1. Incident Name:				3.		
BOLT CREEK				Branch:	Division/Group P	
2. Operational Period: DAY/NIGHT SHIFT						
Date/Time From: 10/16/2022 0700 SUN		Date/Time To: 10/17/2022 0700 MON				
4. Operations Personnel						
OPERATIONS CHIEF		RYAN NICHOLLS 509-430-1606		DIVISION/GROUP SUPERVISOR		BRAD WALLACE 509-899-1057
AIR ATTACK SUPERVISOR				PLANNING OPS		WES LONG 360-281-9585
5. Resources Assigned this Period						
Strike Team / Task Force / Resource Designator		LWD	Leader	Number Persons	Drop Off PT./Time	Pick Up PT./Time
C-18 CR21 NORTH PACIFIC FORESTRY INC		10/22	JOSE PEREZ ARELLANO	20	ICP/0700	ICP/1900
O-251 STEN CORY BERGSTROM (T)		10/26	360-461-7390	1	ICP/0700	ICP/1900
E-198 ENG6 METHOW RIVER WILD FIRE		10/26	IVAN MUNOZ	3	ICP/0700	ICP/1900
E-203 ENG5 AMERICAN LAND SERVICE LLC		10/27	CHRISTIAN MARTINSON	3	ICP/0700	ICP/1900
E-205 ENG6 SOUTH COUNTY		10/27	ANDREW LUNNY	2	ICP/0700	ICP/1900
E-206 ENG6 WOODPECKER CO		10/27	MICHELLE HERRIN	3	ICP/0700	ICP/1900
E-207 ENG3 RATTLESNAKE RIDGE		10/27	FABIAN BREMERMAN	3	ICP/0700	ICP/1900
O-240 SOFR RYAN GRANT 509-254-1672		10/27		1	ICP/0700	ICP/1900
E-185 AMB2 CENTAL KITSAP		10/22	TREVOR LEE STANLEY 360-620-6558	2	ICP/0700	ICP/1900
6. Control Operations/Work Assignments:						
<p>Task: Hold fire from crossing Hwy 2, reinforce primary control lines, patrol, and maintain patrol status within the division. Purpose: Confine the fire to its current footprint. Limit the impacts of fire spread around infrastructure, structures, timber, and other identified values at risk. End State: Fire is confined to the existing footprint and defensive preparations are in place around all infrastructure and structures.</p>						
7. Special Instructions:						
8. Division/Group Communication Summary						
Function	Channel	RX Frequency N/W	RX Tone/NAC	TX Frequency N/W	TX Tone/NAC	Mode
TACTICAL	3	151.2125	118.8	151.2125	118.8	A
COMMAND	7	159.4125	118.8	151.4450	118.8	A
COMMAND	8	159.3750	118.8	151.3250	118.8	A
AIR TO GROUND	12	159.2700	103.5	159.2700	103.5	A
AIR TO GROUND	13	151.2875	103.5	151.2875	103.5	A
AIR GUARD	16	168.6250	000.0	168.6250	110.9	A
9. Prepared By (Resource Unit Leader)			Approved By (Planning Section Chief)		Date	Time
			RYAN SCHARNHORST		10/15/2022	2332

Division/Group Assignment List (ICS 204 WF)
Controlled Unclassified Information//Basic

1. Incident Name:				3.		
BOLT CREEK				Branch:	Division/Group P	
2. Operational Period: DAY/NIGHT SHIFT						
Date/Time From: 10/16/2022 0700 SUN		Date/Time To: 10/17/2022 0700 MON				
4. Operations Personnel						
OPERATIONS CHIEF	RYAN NICHOLLS 509-430-1606		DIVISION/GROUP SUPERVISOR	BRAD WALLACE 509-899-1057		
AIR ATTACK SUPERVISOR			PLANNING OPS	WES LONG 360-281-9585		
7. Special Instructions:						
<ul style="list-style-type: none"> • Notify WA DOT of trees or debris falling on the highway. • When addressing road hazards, utilize a vehicle equipped with emergency warning lights after blocking the roadway. • Clear leaf litter from control lines. • Text weather to IMET at 240-778-5298 at 1400 hours. • Back haul unused equipment to base camp. • Identify and make appropriate notifications for all hazards along the BPA high-tension power line corridor. 						
8. Division/Group Communication Summary						
Function	Channel	RX Frequency N/W	RX Tone/NAC	TX Frequency N/W	TX Tone/NAC	Mode
TACTICAL	3	151.2125	118.8	151.2125	118.8	A
COMMAND	7	159.4125	118.8	151.4450	118.8	A
COMMAND	8	159.3750	118.8	151.3250	118.8	A
AIR TO GROUND	12	159.2700	103.5	159.2700	103.5	A
AIR TO GROUND	13	151.2875	103.5	151.2875	103.5	A
AIR GUARD	16	168.6250	000.0	168.6250	110.9	A
9. Prepared By (Resource Unit Leader)			Approved By (Planning Section Chief)		Date	Time
			RYAN SCHARNHORST		10/15/2022	2332

Division/Group Assignment List (ICS 204 WF)
Controlled Unclassified Information//Basic

1. Incident Name:				3.		
BOLT CREEK				Branch:		Division/Group
2. Operational Period: DAY/NIGHT SHIFT				S		
Date/Time From: 10/16/2022 0700 SUN		Date/Time To: 10/17/2022 0700 MON				
4. Operations Personnel						
OPERATIONS CHIEF		RYAN NICHOLLS 509-430-1606		PLANNING OPS		WES LONG 360-281-9585
FIELD OPS				DIVISION/GROUP SUPERVISOR		BENJAMIN LIPPERT 509-675-6362
5. Resources Assigned this Period						
Strike Team / Task Force / Resource Designator		LWD	Leader	Number Persons	Drop Off PT./Time	Pick Up PT./Time
O-206.19 TFLD MICHAEL NICK 509-563-9188		10/19		1	ICP/0700	ICP/1900
C-19 CR2I GRAYBACK FORESTRY, INC.		10/23	TIMOTHY BREWER	20	ICP/0700	ICP/1900
C-20 CR2I SES AHTANUM		10/26	JEFFREY DELAROSA	18	ICP/0700	ICP/1900
O-219 FELB(T) DANIEL OAKLAND 401-258-4702		10/18		1	ICP/0700	ICP/1900
E-139 ENG5 BLACKSTONE FORESTRY LLC		10/19	TARYN THOMAS	3	ICP/0700	ICP/1900
E-176 ENG5 OSPREY WILDFIRE, LLC		10/19	DUSTIN WILLIAMS	3	ICP/0700	ICP/1900
E-208 ENG4 HI COUNTRY L.L.C.		10/26	CODY SUTTON	3	ICP/0700	ICP/1900
E-150 CHP2 BROTHERS FIRE		10/19	SHANE MUSTARD	3	ICP/0700	ICP/1900
E-149 DOZ2 BURGESS LOGGING		10/24	WILLIAM BURGESS	2	ICP/0700	ICP/1900
O-242 STEN ANDREW KLUNDER 605-484-5611		10/27		1	ICP/0700	ICP/1900
E-138 ENG4 CHEWACK WILDFIRE INC		10/26	ANDREW GRAVES	3	ICP/0700	ICP/1900
E-193 ENG5 METHOW RIVER WILD FIRE		10/26	RICHIE HARVEY	3	ICP/0700	ICP/1900
E-194 ENG5 EARLY WINTERS		10/26	CHRIS SURFACE	3	ICP/0700	ICP/1900
E-196 ENG5 C2C WILDFIRE INC.		10/26	BRYCE HOLBROOK	3	ICP/0700	ICP/1900
E-199 ENG6 BLACKSTONE FORESTRY, LLC		10/26	RILEY NOONAN	3	ICP/0700	ICP/1900
E-200 ENG6 WILD FIRE SERVICES INC		10/26	JASON SARE	3	ICP/0700	ICS/1900
E-202 ENG6 SNOHOMISH FD21		10/27	VIVEK PATEL	2	ICP/0700	ICP/1900
E-184 WTS2 SNOHOMISH FD25 - T37A		10/20	JAY FISCHER	1	ICP/0700	ICP/1900
8. Division/Group Communication Summary						
Function	Channel	RX Frequency N/W	RX Tone/NAC	TX Frequency N/W	TX Tone/NAC	Mode
TACTICAL	2	151.3400	118.8	151.3400	118.8	A
COMMAND	8	159.3750	118.8	151.3250	118.8	A
COMMAND	7	159.4125	118.8	151.4450	118.8	A
AIR TO GROUND	12	159.2700	103.5	159.2700	103.5	A
AIR TO GROUND	13	151.2875	103.5	151.2875	103.5	A
AIR GUARD	16	168.6250	000.0	168.6250	110.9	A
9. Prepared By (Resource Unit Leader)			Approved By (Planning Section Chief)		Date	Time
			RYAN SCHARNHORST		10/15/2022	2332

Division/Group Assignment List (ICS 204 WF)
 Controlled Unclassified Information//Basic

1. Incident Name:				3.		
BOLT CREEK				Branch:	Division/Group S	
2. Operational Period: DAY/NIGHT SHIFT						
Date/Time From: 10/16/2022 0700 SUN		Date/Time To: 10/17/2022 0700 MON				
4. Operations Personnel						
OPERATIONS CHIEF		RYAN NICHOLLS 509-430-1606		PLANNING OPS		WES LONG 360-281-9585
FIELD OPS				DIVISION/GROUP SUPERVISOR		BENJAMIN LIPPERT 509-675-6362
5. Resources Assigned this Period						
Strike Team / Task Force / Resource Designator		LWD	Leader	Number Persons	Drop Off PT./Time	Pick Up PT./Time
O-268 EMPF SANDRA ZELEPUZA		10/28	360-580-8833	1	ICP/0700	ICP/1900
O-257 EMPF DANIELLE STUMPF		10/27	253-881-8436	1	ICP/0700	ICP/1900
O-259 EMTF SPENCER WILSON		10/28		1	ICP/0700	ICP/1900
6. Control Operations/Work Assignments:						
<p>Task: Hold fire from crossing Hwy 2, reinforce primary control lines, clear roadways to provide for safe travel, and maintain patrol status within the division. Maintain Initial Attack availability.</p> <p>Purpose: Confine the fire to its current footprint. Limit the impacts of fire spread around infrastructure, structures, timber, and other identified values at risk.</p> <p>End State: Fire is confined to the existing footprint and defensive preparations are in place around all infrastructure, structures, and roads are cleared of debris reducing the hazards to firefighters and the public.</p>						
7. Special Instructions:						
<ul style="list-style-type: none"> • Ambulance (E-185), "AMBO2", is staged at Money Creek. • Improve spur 120 off of 6022 Road • Reassess current indirect line placement for effectiveness. • Text weather to IMET at 240-778-5298 at 1400 hours. 						
8. Division/Group Communication Summary						
Function	Channel	RX Frequency N/W	RX Tone/NAC	TX Frequency N/W	TX Tone/NAC	Mode
TACTICAL	2	151.3400	118.8	151.3400	118.8	A
COMMAND	8	159.3750	118.8	151.3250	118.8	A
COMMAND	7	159.4125	118.8	151.4450	118.8	A
AIR TO GROUND	12	159.2700	103.5	159.2700	103.5	A
AIR TO GROUND	13	151.2875	103.5	151.2875	103.5	A
AIR GUARD	16	168.6250	000.0	168.6250	110.9	A
9. Prepared By (Resource Unit Leader)			Approved By (Planning Section Chief)		Date	Time
			RYAN SCHARNHORST		10/15/2022	2332

Division/Group Assignment List (ICS 204 WF)
Controlled Unclassified Information//Basic

1. Incident Name:			3.			
BOLT CREEK			Branch:		Division/Group	
2. Operational Period: DAY/NIGHT SHIFT					Z	
Date/Time From: 10/16/2022 0700 SUN		Date/Time To: 10/17/2022 0700 MON				
4. Operations Personnel						
OPERATIONS CHIEF		RYAN NICHOLLS 509-430-1606		BRANCH DIRECTOR		
DIVISION/GROUP SUPERVISOR				AIR ATTACK SUPERVISOR		
DIVISION/GROUP SUPERVISOR		UNSTAFFED				
5. Resources Assigned this Period						
Strike Team / Task Force / Resource Designator		LWD	Leader	Number Persons	Drop Off PT./Time	Pick Up PT./Time
NO ASSIGNED RESOURCES						
6. Control Operations/Work Assignments:						
Task: Unstaffed. Take no action(s).						
Purpose:						
End State:						
7. Special Instructions:						
8. Division/Group Communication Summary						
Function	Channel	RX Frequency N/W	RX Tone/NAC	TX Frequency N/W	TX Tone/NAC	Mode
COMMAND						
TACTICAL						
LOGISTICS						
AIR TO GROUND						
9. Prepared By (Resource Unit Leader)			Approved By (Planning Section Chief)		Date	Time
DAVID WINTER			RYAN SCHARNHORST		10/15/2022	2332

Division/Group Assignment List (ICS 204 WF)
Controlled Unclassified Information//Basic

1. Incident Name:			3.			
BOLT CREEK			Branch:		Division/Group	
2. Operational Period: DAY/NIGHT SHIFT					FIRING GROUP	
Date/Time From: 10/16/2022 0700	SUN	Date/Time To: 10/17/2022 0700	MON			
4. Operations Personnel						
OPERATIONS CHIEF		RYAN NICHOLLS 509-430-1606		BRANCH DIRECTOR		
DIVISION/GROUP SUPERVISOR		DALE HEIDAL 360-402-9494		PLANNING OPS		WES LONG 360-281-9585
5. Resources Assigned this Period						
Strike Team / Task Force / Resource Designator		LWD	Leader	Number Persons	Drop Off PT./Time	Pick Up PT./Time
O-247 WFM1 WHISKEYTOWN		10/17	WARREN SWAB 530-999-1674	7	ICP/0700	ICP/1900
C-17 CR2I MT BAKER IA		10/18	ERIK USHER	20	ICP/0700	ICP/1900
6. Control Operations/Work Assignments:						
<p>Task: Prepare for firing operations in all divisions by assessing, documenting, consulting, and ordering supplies as needed.</p> <p>Purpose: Construct a firing plan to contain the fire within the identified contingency lines, protect structures, protect infrastructure, and keep the fire from crossing Hwy 2.</p> <p>End State: Fire containment with minimal growth, no infrastructure or structural damage, and protection of values at risk, including the forest and timber.</p>						
7. Special Instructions:						
<ul style="list-style-type: none"> Utilize aviation resources as needed. Coordinate with the appropriate Division Supervisor to align the resources needed to assist in holding the fire operations within the containment lines. Do not conduct firing operations if outside the prescription plan perimeters. Notify the Structure Protection Group to implement Lookout management action points (MAPs) should any firing operations cross 6022 Road. 						
8. Division/Group Communication Summary						
Function	Channel	RX Frequency N/W	RX Tone/NAC	TX Frequency N/W	TX Tone/NAC	Mode
TACTICAL	6	168.5625	000.0	168.5625	000.0	A
COMMAND	7	159.4125	118.8	151.4450	118.8	A
COMMAND	8	159.3750	118.8	151.3250	118.8	A
TACTICAL	1	151.3100	118.8	151.3100	118.8	A
TACTICAL	3	151.2125	118.8	151.2125	118.8	A
AIR TO GROUND	12	159.2700	103.5	159.2700	103.5	A
AIR TO GROUND	13	151.2875	103.5	151.2875	103.5	A
9. Prepared By (Resource Unit Leader)		Approved By (Planning Section Chief)			Date	Time
		RYAN SCHARNHORST			10/15/2022	2332

Division/Group Assignment List (ICS 204 WF)
Controlled Unclassified Information//Basic

1. Incident Name:				3.		
BOLT CREEK				Branch:	Division/Group	
2. Operational Period: DAY/NIGHT SHIFT						
Date/Time From: 10/16/2022 0700 SUN		Date/Time To: 10/17/2022 0700 MON		STRUCTURE		
4. Operations Personnel						
OPERATIONS CHIEF	RYAN NICHOLLS 509-430-1606		DIVISION/GROUP SUPERVISOR	AARON BIBE 509-591-8620		
PLANNING OPS	WES LONG 360-281-9585					
5. Resources Assigned this Period						
Strike Team / Task Force / Resource Designator	LWD	Leader	Number Persons	Drop Off PT./Time	Pick Up PT./Time	
O-197 TFLD KENNETH JONES (T) 509-683-2092	10/16		1	ICP/0700	ICP/1900	
E-175 ENG5 E8142 - WA-SPS	10/21	REECE JOHNSON	4	ICP/0700	ICP/1900	
E-177 ENG5 LIBERTY WILDFIRE	10/24	KATHLEEN CALVIN	3	ICP/0700	ICP/1900	
E-180 ENG5 WA-OLS	10/23	REGGIE BUATTNOR 360-670-7320	3	ICP/0700	ICP/1900	
E-182 ENG5 METHOW RIVER WILD	10/23	JOHN NEUNEKOR 509-409-1485	3	ICP/0700	ICP/1900	
E-183 ENG5 LL MEADOW WILDFIRE	10/21	WESLEY JAMES	3	ICP/0700	ICP/1900	
6. Control Operations/Work Assignments:						
<p>Task: Hold fire from crossing Hwy 2, implement the structural defense plan with an emphasis on perimeter control, and maintain patrol status within the division.</p> <p>Purpose: Confine the fire to its current footprint. Limit the impacts of fire spread around infrastructure, structures, timber, and other identified values at risk.</p> <p>End State: Fire is confined to the existing footprint and defensive preparations are in place around all infrastructure and structures.</p>						
7. Special Instructions:						
<ul style="list-style-type: none"> • Maintain awareness of construction traffic along 63 Road. • Validate the structure protection plan. • If the fire crosses 6022 Road, implement the structure protection plan at Haybrook Lookout. 						
8. Division/Group Communication Summary						
Function	Channel	RX Frequency N/W	RX Tone/NAC	TX Frequency N/W	TX Tone/NAC	Mode
TACTICAL	5	153.8300	000.0	153.8300	000.0	A
COMMAND	7	159.4125	118.8	151.4450	118.8	A
COMMAND	8	159.3750	118.8	151.3250	118.8	A
AIR TO GROUND	12	159.2700	103.5	159.2700	103.5	A
AIR TO GROUND	13	151.2875	103.5	151.2875	103.5	A
AIR GUARD	16	168.6250	000.0	168.6250	110.9	A
9. Prepared By (Resource Unit Leader)		Approved By (Planning Section Chief)		Date	Time	
		RYAN SCHARNHORST		10/15/2022	2332	

Division/Group Assignment List (ICS 204 WF)
Controlled Unclassified Information//Basic

1. Incident Name:				3.		
BOLT CREEK				Branch:	Division/Group	
2. Operational Period: DAY/NIGHT SHIFT						
Date/Time From: 10/16/2022 0700 SUN		Date/Time To: 10/17/2022 0700 MON		NIGHT SHIFT		
4. Operations Personnel						
OPERATIONS CHIEF		RYAN NICHOLLS 509-430-1606		PLANNING OPS		WES LONG 360-281-9585
DIVISION/GROUP SUPERVISOR		DJ GOLDSMITH 509-951-8755				
5. Resources Assigned this Period						
Strike Team / Task Force / Resource Designator		LWD	Leader	Number Persons	Drop Off PT./Time	Pick Up PT./Time
O-267 TFLD NICHOLAS LOEWEN		10/28	541-620-4318	1	ICP/1900	ICP/0700
E-140 ENG5 SNO COUNTY FD #15		10/20	DALTON BAUNSGARD	2	ICP/1900	ICP/0700
E-141 ENG5 SNO COUNTY FD #22		10/21	TYLER BYRD	2	ICP/1900	ICP/0700
E-181 ENG5 WA-OLS		10/22	BLAKE MANN 360-640-3650	4	ICP/1900	ICP/0700
E-188 ENG5 SNOHOMISH FD16		10/22	JADON WYATT NANNERY	3	ICP/1900	ICP/0700
E-189 ENG6 SNOHOMISH FD26		10/22	NOLAN JON HEISEL	2	ICP/1900	ICP/0700
E-192 ENG5 GLACIER PEAK WILDFIRE INC		10/26	CHRIS WHITE	3	ICP/1900	ICP/0700
E-195 ENG5 GLACIER PEAK WILDFIRE INC		10/26	JUSTIN WHITAKER	3	ICP/1900	ICP/0700
E-201 ENG6 WILD FIRE SERVICES INC		10/26	RUBI HERNANDEZ-MARTINEZ	3	ICP/1900	ICP/0700
E-178 AMB2 'AMBO1' 360-219-7608		10/19	JOSHUA CHISNELL	2	ICP/1900	ICP/0700
6. Control Operations/Work Assignments:						
<p>Task: Hold fire from crossing Hwy 2, reinforce primary control lines, provide point protection for values at risk, and maintain patrol status within all divisions (except DIV Z).</p> <p>Purpose: Confine the fire to its current footprint. Limit the impacts of fire spread around infrastructure, structures, timber, and other identified values at risk.</p> <p>End State: Fire is confined to the existing footprint and defensive preparations are in place around all infrastructure and structures.</p>						
7. Special Instructions:						
8. Division/Group Communication Summary						
Function	Channel	RX Frequency N/W	RX Tone/NAC	TX Frequency N/W	TX Tone/NAC	Mode
TACTICAL	1	151.3100	118.8	151.3100	118.8	A
COMMAND	7	159.4125	118.8	151.4450	118.8	A
COMMAND	8	159.3750	118.8	151.3250	118.8	A
AIR TO GROUND	12	159.2700	103.5	159.2700	103.5	A
AIR TO GROUND	13	151.2875	103.5	151.2875	103.5	A
AIR GUARD	16	168.6250	000.0	168.6250	110.9	A
9. Prepared By (Resource Unit Leader)			Approved By (Planning Section Chief)		Date	Time
			RYAN SCHARNHORST		10/15/2022	2332

Division/Group Assignment List (ICS 204 WF)
Controlled Unclassified Information//Basic

1. Incident Name:				3.		
BOLT CREEK				Branch:	Division/Group	
2. Operational Period: DAY/NIGHT SHIFT						
Date/Time From: 10/16/2022 0700 SUN		Date/Time To: 10/17/2022 0700 MON		NIGHT SHIFT		
4. Operations Personnel						
OPERATIONS CHIEF		RYAN NICHOLLS 509-430-1606		PLANNING OPS		WES LONG 360-281-9585
DIVISION/GROUP SUPERVISOR		DJ GOLDSMITH 509-951-8755				
7. Special Instructions:						
<ul style="list-style-type: none"> • Provide updates directly to the COML. • COML receives all IWI notifications. • Provide night watch for helicopter ONW at Skykomish airport. As necessary, report to Communications at 360-259-7651. 						
8. Division/Group Communication Summary						
Function	Channel	RX Frequency N/W	RX Tone/NAC	TX Frequency N/W	TX Tone/NAC	Mode
TACTICAL	1	151.3100	118.8	151.3100	118.8	A
COMMAND	7	159.4125	118.8	151.4450	118.8	A
COMMAND	8	159.3750	118.8	151.3250	118.8	A
AIR TO GROUND	12	159.2700	103.5	159.2700	103.5	A
AIR TO GROUND	13	151.2875	103.5	151.2875	103.5	A
AIR GUARD	16	168.6250	000.0	168.6250	110.9	A
9. Prepared By (Resource Unit Leader)			Approved By (Planning Section Chief)		Date	Time
			RYAN SCHARNHORST		10/15/2022	2332

Division/Group Assignment List (ICS 204 WF)
Controlled Unclassified Information//Basic

1. Incident Name:			3.			
BOLT CREEK			Branch:		Division/Group	
2. Operational Period: DAY/NIGHT SHIFT			65 ROAD CLOSURE			
Date/Time From: 10/16/2022 0700 SUN		Date/Time To: 10/17/2022 0700 MON				
4. Operations Personnel						
OPERATIONS CHIEF		RYAN NICHOLLS 509-430-1606		PLANNING OPS		WES LONG 360-281-9585
DIVISION SUPERVISOR		BRIAN MCNEIL 425-365-6067				
5. Resources Assigned this Period						
Strike Team / Task Force / Resource Designator		LWD	Leader	Number Persons	Drop Off PT./Time	Pick Up PT./Time
ROAD SECURITY (GUARD)		10/22	SARAH LARSEN	1	RD 65/0600	RD 65/2200
ROAD SECURITY (GUARD)		10/22	AVERY PAYNE	1	RD 65/0600	RD 65/2200
ROAD SECURITY (GUARD)		10/22	FRANK ROSCIGNO	1	RD 65/0600	RD 65/2200
6. Control Operations/Work Assignments:						
<ul style="list-style-type: none"> • USFS will provide security to the 65 Road closure. • Assist fire resources working in the area with access around the road closure and direct public traffic past the road closure location. 						
7. Special Instructions:						
If you need access when working in the 65 Road area, or if you have any traffic issues, contact the Forest Service's Guards on Command Channel 8 for assistance.						
8. Division/Group Communication Summary						
Function	Channel	RX Frequency N/W	RX Tone/NAC	TX Frequency N/W	TX Tone/NAC	Mode
TACTICAL	1	151.3100	118.8	151.3100	118.8	A
COMMAND	8	159.3570	118.8	151.3250	118.8	A
9. Prepared By (Resource Unit Leader)			Approved By (Planning Section Chief)		Date	Time
			RYAN SCHARNHORST		10/15/2022	2332

INCIDENT RADIO COMMUNICATIONS PLAN (ICS 205)

Controlled Unclassified Information//Basic

1. Incident Name:		2. Date/Time Prepared:		3. Operational Period:	
BOLT CREEK		Date: 10/14/2022	Date/Time From: 10/16/2022 0700	DAY/NIGHT SHIFT	Date/Time To: 10/17/2022 0700
		Time: 2332		SUN	MON

4. Basic Radio Channel Use:										
Zone Group	Ch #	Function	Channel Name/Trunked Radio System Talkgroup	Assignment	RX Freq	RX Tone/NAC	TX Freq	TX Tone/NAC	Mode (A,D, or M)	Remarks
	1	TACTICAL	TAC 1	DIV A	151.3100	118.8	151.3100	118.8	A	
	2	TACTICAL	TAC 2	DIV S	151.3400	118.8	151.3400	118.8	A	
	3	TACTICAL	TAC 3	DIV P	151.2125	118.8	151.2125	118.8	A	
	4	TACTICAL	DNR COM	UNASSIGNED	151.4150	103.5	151.4150	103.5	A	IA USE ONLY
	5	TACTICAL	REDNET	STRUCTURE	153.8300	000.0	153.8300	000.0	A	
	6	TACTICAL	FS FTAC	IA / FIRING GROUP	168.5625	000.0	168.5625	000.0	A	IA/FIRING GROUP
	7	COMMAND	CMD 7	ALL DIVS	159.4125	118.8	151.4450	118.8	A	LOCATED NORTH OF INDEX LINKED TO CMD 8
	8	COMMAND	CMD 8	ALL DIVS	159.3750	118.8	151.3250	118.8	A	LOCATED ON SOBIESKI LINKED TO CMD 7
	9	COMMAND	SNOHOMIS	FOREST NET	159.4350	141.3	151.1900	141.3	A	DISPATCH CALL SIGN "NW DISPATCH" IA USE ONLY
	10	COMMAND	SULTAN	FOREST NET	159.2475	141.3	151.1825	141.3	A	DISPATCH CALL SIGN "NW DISPATCH" IA USE ONLY
	11	COMMAND	SOBIESKI	FOREST NET	169.5750	146.2	164.9625	156.7	A	DISPATCH CALL SIGN "PUGET SOUND" IA USE ONLY
	12	AIR TO GROUND	DNR A/G1	ALL DIVS	159.2700	103.5	159.2700	103.5	A	PRIMARY A/G
	13	AIR TO GROUND	DNR A/G2	ALL DIVS	151.2875	103.5	151.2875	103.5	A	SECONDARY A/G
	14	AIR TO GROUND	A/G 41	UNASSIGNED	167.4750	000.0	167.4750	000.0	A	
	15	AIR TO GROUND	VMED 29	MEDEVAC	155.3475	156.7	155.3475	156.7	A	MEDEVAC
	16	AIR GUARD	AIRGUARD	EMERGENCY USE	168.6250	000.0	168.6250	110.9	A	EMERGENCY USE

5. Special Instructions:	

6. Prepared By	
(Communications Unit Leader)	Name: PAUL CARLYLE
Signature:	

ICS 205	
IAP Page	Date/Time: 10/14/2022 2332

SAFETY MESSAGE/PLAN (ICS 208)

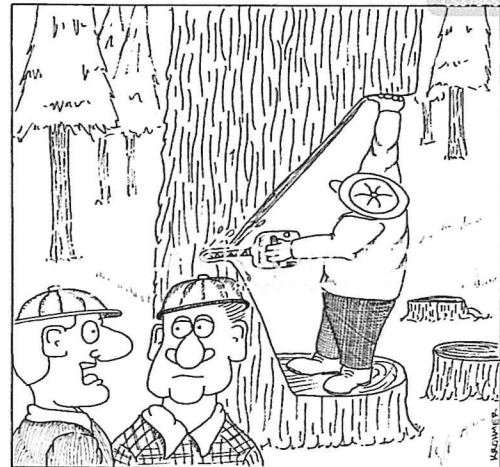
1. Incident Name: BOLT CREEK FIRE	2. Operational Period: Date From: 10/16/22 Time From: 0700	Date To: 10/17/22 Time To: 0700
--	---	------------------------------------

3. Safety Message/Expanded Safety Message, Safety Plan, Site Safety Plan:

Major Hazards & Risks: Driving, Working Along Roadway, Hazard Trees, Steep Terrain, Rolling Material, Rugged Access, Cumulative Fatigue, Heavy Equipment Operations

Hazard Tree Secure Felling Area

- A secure felling area, **MINIMUM OF TWO AND ONE HALF (2.5) TIMES THE HEIGHT OF THE MATERIAL BEING FELLED IN ALL DIRECTIONS**, needs to be established and maintained by the faller during all tree felling operations. In addition, the entire downhill side on slopes must be secured if materials can fall/role for a long, unpredictable distance.
- No one shall be permitted in the secured felling area without the authorization of the faller.
- The faller shall establish a safety zone outside the secured area and direct **EVERYONE** to remain there until all felling is completed and an "all clear" has been communicated.
- Safety zones should be established, whenever practical, in the opposite direction of the planned fall, and at a distance of at least 2.5 times the height of the trees being felled.
- The faller shall assign lookout(s). The lookout(s) shall have reliable communications with the faller, and other personnel adjacent to the secure areas.
- Competent lookouts shall be established and maintained by the faller at all major access points roads and trails that afford access to the secured felling area.
- The faller will ensure that no hazards remain such hang-ups, unstable logs, or other dangers before approving access or leaving the secured area.



of
as

TELL JOHNSON THAT THE SAFETY OFFICER WOULD LIKE TO
SPEAK WITH HIM...THE SOONER THE BETTER

Identify Escape Routes and Safety Zones and Make Them Known.

4. Site Safety Plan Required? Yes No Approved Site Safety Plan(s) Located At:

5. Prepared by: Name: Ken Foss _____ Position/Title: SOFR _____ Signature: Ken Foss _____

ICS 208	IAP Page _____	Date/Time: 10/14/2022 10:00 _____
---------	----------------	-----------------------------------

1. Incident Name: BOLT CREEK
ICP – Evergreen State Fairgrounds

2. Operational Period: Date: 10/15/22 - 10/16/22
From: 0700-0700

3. Basic Local Communications Information:

Name	Incident Assigned Position	Cell Phone Number / Email Address
Communications Unit		360-259-7651
Finance Section		360-481-7668
Information Officer		360-259-5006
Medical Unit		360-259-6737
Ordering Unit		360-481-0718
Planning Section		360-481-5153
Safety Officer		360-259-9535

4. Prepared by: Name: Ryan Scharnhorst Position/Title: PSC3 Signature: _____

--	--	--

Bolt Creek Fire

Logistics Information

Base Camp Operating

Quiet Hours	2200 – 0500
Supply	0600 – 2100
Food	0600 - 0900 and 1730 – 2100
Medical Tent	0600 – 2100 (available 24 hours – after posted hours, please call the number posted on the medical Yurt.)
Refer Van	0600 – 2000 for lunch and ice pick-ups
Showers	05:30 – 1200 and 1500 – 2200
Supply	0600 – 2100
Laundry	Drop off clothes to Supply by <u>0830</u> hrs. Expect a 48-hour turn-around. Pick-up for laundry will be at Supply.
Supply Orders	All supply orders need to be into the logistics by <u>1800</u> hrs. for Next-day delivery.

NOTE: All equipment and Overhead request have a 48-hour lag time.

Bolt Creek Fire Information

Fire Information Line 360-370-4170

Email: 2022.boltcreek@firenet.gov

*These are for public information AND to email photos & videos to us!
Text your fire photos and short videos to 360-259-5006*

Facebook Page

[Bolt Creek Fire Information | Facebook](#)

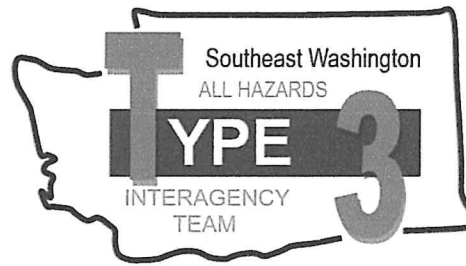
Inciweb

<https://inciweb.nwcf.gov/incident/8417/>

Did you lose or find something? The PIO booth in the corner of the Incident Command Post is the place for Lost and Found. Be prepared to describe what you are looking for. If you're turning something in, please give us time and location of what you found.

Need to mail something? Drop it by the PIO booth and we will drop it in a mailbox for you.

Code of Conduct Incident Personnel



Each individual on this incident is responsible for:

- 🗳 Being *ready and able* to perform their assigned duties effectively.
- 🗳 Conducting themselves in a manner that treats people with dignity, equality, courtesy, and respect.
- 🗳 Abiding by agency ethics and conduct regulations.
- 🗳 Reporting any harassment or other inappropriate behavior.

Each individual of this incident has the right to:

- 🗳 Work in an environment characterized by safe work practices.
- 🗳 Work in a fair and harassment free environment.
- 🗳 Say "No" to unwelcome advances or requests for favors.
- 🗳 File complaints or grievances through appropriate avenues.

There is zero tolerance for inappropriate behavior while assigned to the incident, including:

- 🗳 Illegal drug use
- 🗳 Alcohol use
- 🗳 Unsafe work practices and activities
- 🗳 Discrimination
- 🗳 Sexual harassment
- 🗳 Fighting, threatening, and abusive behaviors
- 🗳 Using social media and electronic communication devices for personal business while engaged in fire assignment duties.
- 🗳 Other violations of Fire Service, Washington DNR, and Federal agency standards of conduct.

Failure to adhere to the Code of Conduct could result in dismissal from the incident, with notification to your home unit.

The public expects our best efforts; they see us as professionals in what we say and do. Let's continue to show them we are!

DNR/DOC Camp Crew Guidelines	1. Incident Name	2. Date Prepared	3. Time Prepared
<p><u>ALL PERSONNEL WORKING AROUND OFFENDERS/DNR KITCHENS</u></p> <p><i>This message is from the Department of Natural Resources and Department of Corrections.</i></p> <ul style="list-style-type: none"> ▶ No person shall be allowed to carry firearms in the area where offenders are working. It is acceptable to secure weapons in vehicles while entering into the working vicinity of offenders. ▶ Do not give or take anything from an offender. Offenders are identified by red ball caps or red hard hats. ▶ <u>Do NOT</u> take photos or interview offenders without approval from the DNR Inmate Liaison. ▶ <u>Do not do any favors for offenders.</u> (Examples: passing on a message, giving tobacco, asking for change, mailing a letter, using a phone. The most innocent act/favor can have consequences that could affect an offender for years.) ▶ Report any suspicious act to the Supervisor, DOC Staff or Inmate Liaison. ▶ Offenders are not allowed to use tobacco products. <u>Do not use tobacco products in or around kitchen area.</u> ▶ Offenders on DNR Crews have committed various crimes. They <u>ARE</u> considered minimum level custody. ▶ Treat Offenders with respect, but <u>don't get personal.</u> Practices the correctional distance...<u>don't get personal.</u> Offenders generally feel good with being part of the fire suppression effort; treat them with the same respect and dignity as other fire fighters but, <u>DON'T GET PERSONAL.</u> ▶ Offenders are trained in their job assignments and their work ethics. They are held accountable for their job performance and their behavior. ▶ Acknowledge crews for a job well done; offenders do good work and appreciate the recognition. ▶ Offenders need good professional role models as part of their rehabilitation process. Consider their presence and set good examples by the context of your conversation and choice of language used. 			
<p>9. Prepared by (Name and Position)</p>			

BOLT CREEK

DEMOB LIST

10/17/22



OVERHEAD

O-197	0000	(TFLD)	JONES, ADAM
O-195	0000	(RADO)	PHILLIPS, DENNIS

10/18/22

OVERHEAD

O-220	0000	(AREP)	BERGVALL, LAURIE
O-247	0000	(WFM1)	WHISKEYTOWN
O-171	0800	(BCMG)	TOPPING, CODY

10/19/22

CREWS

C-17	0000	(CR2I)	MT BAKER IA
------	------	--------	-------------

OVERHEAD

O-190	0000	(RADO)	ANDERSON, JASON
O-211	0000	(FMOD)	BEN NEWMAN BAILEY LOGGING
O-172	0000	(EMTB)	FIELD, CHRISTY
O-219	0000	(FELB)	OAKLAND, DANIEL
O-229	0000	(PIOF)	SARGEANT, KAREN



BOLT CREEK FIRE

ANDY PALMER/DUTCH CREEK EMERGENCY MEDICAL EVACUATION TIMES



LEADER'S INTENT: To establish **approximate** travel times from key areas of the fire to Skykomish Airport, as well as area hospitals by ground transportation. See Medical Plan (ICS206) for travel times via air and Heli spot Lat and Long. Not all DPs are on the chart. Travel times are approximate, and one should always consider weather, time of day, traffic, and road/trail conditions.

Ground Transport Only	Skykomish Airport	Evergreen Health Monroe	Providence Medical Center (Everett)	Harborview Medical Center (Seattle)
DP-10 (Beckler River CG)	4 Mins	50 Mins	1 Hr 10 Mins	1 Hr 30 Mins
DP-20 (FS-65 and HWY 2)	2 Mins	45 Mins	1 Hr 5 Mins	1 Hr 25 Mins
DP-30 (Smokey's)	2 Mins	45 Mins	2 Hr 5 Mins	1 Hr 25 Mins
DP-50 (Grotto)	8 Mins	40 Mins	1 Hr	1 Hr 20 Mins
DP-68 (Jim's Place)	15 Mins	40 Mins	1 Hr	1 Hr 20 Mins
DP-90 (Railroad)	11 Mins	35 Mins	1 Hr	1 Hr 20 Mins
DP-100 (Halford)	12 Mins	35 Mins	1 Hr	1 Hr 20 Mins
DP-102 (120 Spur Rd)	30 Mins	45 Mins	1 Hr	1 Hr 20 Mins
DP-105 (63 Rd and 210)	25 Mins	40 Mins	1 Hr	1 Hr 20 Mins
H-30 (Station 54)	25 Mins	30 Mins	50 Mins	1 Hr 10 Mins
H-67 (Parking Lot)	20 Mins	30 Mins	55 Mins	1 Hr 10 Mins

Study your map. Know where you are working. Know where your medical resources are located today. Situational awareness is your job.

Please provide additional relevant drive times information to SOF2s at ICP in order to populate this table more thoroughly. Help us help you in your time of need.

MEDICAL PLAN (ICS 206 WF)

1. Incident/Project Name			2. Operational Period				
Bolt Creek			Date/Time: 10/16/2022-10/17/2022				
3. Ambulance Services							
Name	Complete Address	Phone	Advanced Life Support (ALS)				
			YES	NO			
Sky Valley Fire #54	42013 State HWY 2-Gold Bar	911	X				
Sultan Fire #51	32905 Cascade View Dr	911		X			
Skykomish FD #50	105 E Old Cascade HWY	911		X			
4. Air Ambulance Services							
Name	Phone	Type of Aircraft & Capability					
Airlift Northwest	911 (800-426-2430)	Rotor					
Life Flight	911 (800-232-0911)	Rotor					
5. Hospitals							
Name Complete Address	Degrees Decimal Minutes	Travel Time From ICP		Phone	Helipad		Level of Care Facility
Evergreen Health Monroe 14701 179 th Ave SE Monroe, WA	Lat: N/A	N/A	5 MIN	425-877-9371		X	Level 4
	Long: N/A						
Providence Medical Center 1321 Colby Ave Everett, WA	Lat: 47° 59' 58.5" N	10 MIN	25 MIN	425-404-5601	X		Level 2
	Long: 122° 12' 21.5" W						
Harborview Medical 325 9 th Ave Seattle, WA	Lat: 47° 36' 10.8" N	15 MIN	60 MIN	206-744-3000	X		Level 1 Trauma Burn Center
	Long: 122° 19' 29.6" W						
DIVISIONS							
ICP	EMS Responders:		Zebron Watts MEDL W-360-259-6737 C 541-270-4131				
DIV A	EMS Responders & Capabilities:		Medic-Joel Bower				
	Medical Emergency Channel:		Command				
	Air / Ground		15 Minutes / 65 Minutes				
	Approved Heli Spot:		Skykomish Airport				
	Lat:		47° 42' 38" N				
	Long:		121° 20' 25" W				
DIV P	EMS Responders & Capabilities:		AMBO 2-Trevor Stanley				
	Medical Emergency Channel:		Command				
	Air / Ground		15 Minutes / 55 Minutes				
	Approved Heli Spots:		NONE IN THIS DIVISION				
DIV S	EMS Responders & Capabilities:		Medic-Danielle Stumpf, Medic- Sandra Zelepuza / EMTF-Spencer Wilson				
	Medical Emergency Channel:		Command				
	Air / Ground		15 Minutes / 50 Minutes				
	Approved Heli Spot:		H-67 (Parking Lot)	H-30 (Station 54)			
	Lat:		47° 49' 07" N	47° 50' 31" N			
	Long:		121° 33' 13" W	121° 40' 06" W			
DIV Z	NOT STAFFED WITH MEDICAL PERSONNEL						
STRUCTURE	NOT STAFFED WITH MEDICAL PERSONNEL						
NIGHT SHIFT	EMS Responders & Capabilities:		AMBO 1-Josh Chisnell				
	Medical Emergency Channel:		Command				
	Approved Heli Spots		Skykomish Airport	H-67 (Parking Lot)	H-30 (Station 54)		
	Lat:		47° 42' 38" N	47° 49' 07" N	47° 50' 31" N		
	Long:		121° 20' 25" W	121° 33' 13" W	121° 40' 06" W		
Prepared by (Medical Unit Leader)		Date:	Reviewed By (Safety Officer)			Date:	
Zebron Watts 		10/15/22	Ken Foss SOFR 				

MEDICAL PLAN (ICS 206 WF)

Controlled Unclassified Information//Basic

Medical Incident Report					
FOR A NON-EMERGENCY INCIDENT, WORK THROUGH CHAIN OF COMMAND TO REPORT AND TRANSPORT INJURED PERSONNEL AS NECESSARY.					
FOR A MEDICAL EMERGENCY: IDENTIFY ON-SCENE INCIDENT COMMANDER BY NAME AND POSITION AND ANNOUNCE "MEDICAL EMERGENCY" TO INITIATE RESPONSE FROM IMT COMMUNICATIONS/DISPATCH.					
Use the following items to communicate situation to communications/dispatch.					
1. CONTACT COMMUNICATIONS / DISPATCH (Verify correct frequency prior to starting report) <i>Ex: "Communications, Div. Alpha. Stand-by for Emergency Traffic."</i>					
2. INCIDENT STATUS: Provide incident summary (including number of patients) and command structure. <i>Ex: "Communications, I have a Red priority patient, unconscious, struck by a falling tree. Requesting air ambulance to Forest Road 1 at (Lat./Long.) This will be the Trout Meadow Medical, IC is TFLD Jones. EMT Smith is providing medical care."</i>					
Severity of Emergency / Transport Priority	<input type="checkbox"/> RED / PRIORITY 1 Life or limb threatening injury or illness. Evacuation need is IMMEDIATE <i>Ex: Unconscious, difficulty breathing, bleeding severely, 2^o – 3^o burns more than 4 palm sizes, heat stroke, disoriented.</i> <input type="checkbox"/> YELLOW / PRIORITY 2 Serious Injury or illness. Evacuation may be DELAYED if necessary. <i>Ex: Significant trauma, unable to walk, 2^o – 3^o burns not more than 1-3 palm sizes.</i> <input type="checkbox"/> GREEN / PRIORITY 3 Minor Injury or illness. Non-Emergency transport <i>Ex: Sprains, strains, minor heat-related illness.</i>				
Nature of Injury or Illness & Mechanism of Injury	Brief Summary of Injury or Illness <i>(Ex: Unconscious, Struck by Falling Tree)</i>				
Evacuation Request	Air Ambulance / Short Haul/Hoist Ground Ambulance / Other				
Patient Location	Descriptive Location & Lat. / Long. (WGS84)				
Incident Name	Geographic Name + Medical <i>(Ex: Trout Meadow Medical)</i>				
On-Scene Incident Commander	Name of on-scene IC of Incident within an Incident <i>(Ex: TFLD Jones)</i>				
Patient Care	Name of Care Provider <i>(Ex: EMT Smith)</i>				
3. INITIAL PATIENT ASSESSMENT: Complete this section for each patient as applicable (start with the most severe patient)					
Patient Assessment: See IRPG PAGE 106					
Treatment:					
4. EVACUATION PLAN:					
Evacuation Location <i>(if different): (Descriptive Location (drop point, intersection, etc.) or Lat. / Long.)</i> Patient's ETA to Evacuation Location:					
Helispot / Extraction Site Size and Hazards:					
5. ADDITIONAL RESOURCES / EQUIPMENT NEEDS:					
<i>Example: Paramedic/EMT, crews, immobilization devices, AED, oxygen, trauma bag, IV/fluid(s), splints, rope rescue, wheeled litter, HAZMAT, extrication</i>					
6. COMMUNICATIONS: Identify State Air/Ground EMS Frequencies and Hospital Contacts as applicable					
Function	Channel Name/Number	Receive (RX)	Tone/NAC *	Transmit (TX)	Tone/NAC *
COMMAND					
AIR-TO-GRND					
TACTICAL					
7. CONTINGENCY: Considerations: If primary options fail, what actions can be implemented in conjunction with primary evacuation method? Be thinking ahead..					
8. ADDITIONAL INFORMATION: Updates/Changes, etc.					
REMEMBER: Confirm ETAs of resources ordered. Act according to your level of training. Be Alert. Keep Calm. Think Clearly. Act Decisively.					