

INCIDENT ACTION PLAN

BOLT CREEK

WA-NWS-150

PN P14322(1522)

Tuesday



OPERATIONAL PERIOD

10/18/2022 0700

to


10/19/2022 0700



INCIDENT OBJECTIVES (ICS 202)

1. Incident Name:	2. Operational Period: DAY/NIGHT SHIFT		
BOLT CREEK	Date/Time From: 10/18/2022 0700	TUE	Date/Time To: 10/19/2022 0700
3. Objective(s):			
Management Objectives			
<ul style="list-style-type: none"> Provide for firefighter and public safety using ongoing risk analysis and reasonable mitigation of identified hazards. Minimize impacts to communities and infrastructure, and minimize acres burned on private lands along Highway 2 corridor. Maintain and enhance relationships with cooperators, stakeholders, landowners, and communities. Provide accurate and timely information to the public. Protect tribal, cultural, aquatic, and wildlife resources and sensitive plant sites by coordinating with Resource Advisors. Treat each other with dignity and respect and act professionally on the fire and in the community. Manage costs commensurate with values at risk and update Agency Administrators daily. 			
Control Objectives			
<ul style="list-style-type: none"> Maintain the fire north of Highway 2 utilizing the existing suppression strategy to stop the fire spread to at-risk values. To control fire, utilize complete suppression and point protection strategies in areas around structures and values. Keep fire east of Index-Galena Road (FR63) and west of Beckler Creek Road (FR65). Continue to monitor the fire in the wilderness, only taking action to maintain a fire within the identified east/west parameters. 			
4. Operational Period Command Emphasis:			
<ul style="list-style-type: none"> Provide a positive presence to the community and the public impacted by the fire. As the safety of personnel is our highest priority, continually use a deliberate analysis of risk as you engage the fire. <p>Communicating the risks and problems you identify and considering the actions you can take to improve or manage the issue is crucial.</p> <ul style="list-style-type: none"> Review your LCES in all areas of your work environment. Take 10 minutes as a crew to review your communications in the work area, identify escape routes that will lead you to safety if conditions change, and evaluate the safety zones to ensure they are adequate for you, your crew, and other resources. Be aware of values at risk inside and adjacent to the fire perimeter. Engage and suppress fire when safe, and employ appropriate tactics for the situation. 			
General Situational Awareness:			
See attached Fire Weather.			
Expect increased traffic on Hwy 2. Use spotters and additional lookouts. Avoid placing personnel or equipment on the roadway unless necessary.			
5. Site Safety Plan Required? Yes <input type="checkbox"/> No <input checked="" type="checkbox"/>			
Approved Site Safety Plan(s) Located			
6. Incident Action Plan (the items checked below are included in this Incident Action Plan):			
<input checked="" type="checkbox"/> ICS 202	<input type="checkbox"/> ICS 207	Other Attachments:	
<input checked="" type="checkbox"/> ICS 203	<input type="checkbox"/> ICS 208	<input checked="" type="checkbox"/> SAFETY	
<input checked="" type="checkbox"/> ICS 204	<input type="checkbox"/> ICS 220	<input checked="" type="checkbox"/> INFORMATION MESSAGE	
<input checked="" type="checkbox"/> ICS 205	<input checked="" type="checkbox"/> Map/Chart	<input checked="" type="checkbox"/> ICS 214 - UNIT LOG	
<input checked="" type="checkbox"/> ICS 205A	<input checked="" type="checkbox"/> Weather Forecast/Tides/Currents	<input checked="" type="checkbox"/> CODE OF CONDUCT	
<input checked="" type="checkbox"/> ICS 206			
7. Prepared by: RYAN SCHARNHORST	Position/Title: PSC3	Signature:	
8. Approved by Incident Commander:	Name: LEONARD JOHNSON	Signature:	
ICS 202	IAP Page	Date/Time: 10/17/2022 2000	

ORGANIZATION ASSIGNMENT LIST (ICS 203)

1. Incident Name:		2. Operational Period: DAY/NIGHT SHIFT	
BOLT CREEK		Date/Time From: 10/18/2022 0700 TUE	Date/Time To: 10/19/2022 0700 WED
3. Incident Commander(s) and Command Staff:		MEDICAL UNIT LISA PONCELET 206-276-5509 (T)	
IC/UC	LEONARD JOHNSON 360-581-9672	CAMP SECURITY	JAMES GREEN 360-519-9932 (DAY) CHAD RIGGIN (NIGHT)
DEPUTY IC	WALTER ESCOBAR 509-398-1222		
INFORMATION OFFICER	KAREN SARGEANT 509-885-0067 DONALD FERGUSON 360-259-5006	7. Operations Section:	
INFORMATION OFFICER	JOSIE WILLIAMS (V) 425-647-1872	OPS SECTION CHIEF	RYAN NICHOLLS 509-430-1606
LIAISON OFFICER	TIM MCKERN (V) 360-463-2767 DAN SMITH (V) 360-340-4386 (T)	PLANNING OPS	WES LONG 360-281-9585
SAFETY OFFICER	KEN FOSS 253-318-2678		
4. Agency/Organization Representative(s):		DIVISION/GROUP	A KEN JOHNSON 509-496-5452
Agency/Organization	Name	DIVISION/GROUP	P BRAD WALLACE 509-899-1057
DNR- NW REGION ADMIN	JAY S GUTHRIE LAURIE BERGVALL (ACT)	DIVISION/GROUP	S BENJAMIN LIPPERT 509-675-6362
DNR - NW REGION REP	SHANNON CLARK	DIVISION/GROUP	Z (UNSTAFFED)
USFS MSF / AA	JOE NEAL BRYAN MCNEIL (ACT)	DIVISION/GROUP	NIGHT NICHOLAS LOEWEN 541-620-4318
MT. BAKER-SNOQUALMIE NF	CINDY SANDENO (DEP.)	DIVISION/GROUP	65 ROAD CLOSURE BRIAN MCNEIL 425-365-6067
WA STATE PATROL	LT. DEION GLOVER	DIVISION/GROUP	STRUCTURE AARON BIBE 509-591-8620
BNSF	RYAN KUBO	7b. Air Operations Branch:	
SNOHOMISH CO DEM	JARROD DIBBLE	AIR OPS BRANCH DIRECTOR	
KING CO DEM	ALYSHA KAPLAN	AIR ATTACK SUPERVISOR	
SNOHOMISH CO SHERIFF	LT. MIKE MARTIN	AIR SUPPORT SUPERVISOR	
KING CO SHERIFF	CAPT. PETER HORVATH		
SKY VALLEY FD #26	CHIEF ERIC ANDREWS	8. Finance/Administration Section:	
SKYKOMISH FD #50	CHIEF JAMES KNISLEY	CHIEF	PAULA JAMES 808-298-1386
USFS LEAD READ	MATT KENNEY	PTRC	JANET MCINTOSH
5. Planning Section:		TIME UNIT	
CHIEF	RYAN SCHARNHORST 509-432-1016	PROCUREMENT UNIT	ROBERT THOMPSON (V)
SITUATION UNIT	DAVID WINTER 509-301-2631	PHONE NUMBERS ARE NOT PUBLISHED FOR THE PUBLIC	*****PLEASE DO NOT GIVE ANY OF THESE NUMBER OUT TO THE PUBLIC
INCIDENT METEOROLOGIST	LISA KRIEDERMAN 240-778-5298		
DEMOBILIZATION UNIT	JENNIFER NORTON 509-952-1426 (T)		
FIRE BEHAVIOR ANALYST	STEVE ZIEL 541-890-6862		
GIS SPECIALIST	RACHEL ARMSTRONG (V)		
6. Logistics Section:			
CHIEF	CINDY PRESTON 509-607-9724		
DEPUTY	JOSH AMBROSE 360-310-0401		
COMMUNICATIONS UNIT	PAUL CARLYLE 509-438-9702		
BASE CAMP MGR			
EQUIPMENT	CAMERON ESKEBERG		
MEDICAL UNIT	ZEBRON WATTS 541-270-4131		
9. Prepared By:	Name: RYAN SCHARNHORST	Position/Title: PSC3	Signature:
ICS 203	IAP Page	Date/Time: 10/16/2022 2313	



INCIDENT Weather Forecast

FORECAST NO: 31
PREDICTION FOR: 0700 - 0700
SHIFT DATE: Tuesday, October 18, 2022
FORECAST ISSUED: 1700 PDT Oct 17, 2022

NAME OF FIRE: Bolt Creek
UNIT: WA-NDC
SIGNED: *Lisa Kriederman*
Incident Meteorologist

WEATHER DISCUSSION: Another onshore push this morning will bring another persistent inversion over the fire, deepening late morning as westerly flow up the Hwy 2 corridor occurs. Winds will be light and variable. Wednesday will have very similar weather conditions with slight warming.

WEATHER FORECAST:

WEATHER: Mostly sunny and hazy. Areas of smoke.

MAX TEMPERATURES: 65 to 70 ridges and upper slopes; 55 to 70 lower slopes and valleys.

MIN HUMIDITY: 35 to 40 percent above 4000 feet, 48 to 58 percent below 4000 feet.

20 FT WINDS:

RIDGETOP - Light and variable until 1200, then west-southwest 2 to 4 mph.

SLOPE/VALLEY - Light and variable until 1300, then becoming West 2 to 4 mph.

HAINES INDEX: 5 (Moderate) **INVERSION:** Strong, around 3000 ft, deepening to 4000 feet by 1000, some slight weakening between 1200-1400.

OUTLOOK FOR TONIGHT: Mostly clear, a few high clouds. Low temperatures in the mid 40s to low 50s. Max humidity 45 to 55 percent above 2000 ft, 75 to 85 percent below. Winds: East drainage winds 3 to 6 mph.

OUTLOOK FOR WEDNESDAY:

WEATHER: Mostly sunny and hazy. Areas of smoke.

TEMPERATURES: 69 to 74 ridges and upper slopes; 69 to 76 lower slopes and valleys.

HUMIDITY: 29 to 36 percent above 4000 feet, 40 to 48 percent below 4000 feet..

20 FT WINDS:

RIDGETOP - Light and variable until 1200, then west 3 to 5 mph.

SLOPE/VALLEY - Light and variable until 1300, then becoming West 3 to 5 mph.

HAINES INDEX: 5 (Moderate) **INVERSION:** Moderate around 4000, lifting between 1200-1400.

EXTRA INFORMATION:

Sunrise: 0729

Sunset: 1811

Fire Behavior Forecast # 09

Name of Incident: Bolt Creek	Administrative Unit: WA-NWS
Date & Time Issued: October 17, 2022 @ 1900	Operational Period: DAY/NIGHT 10/18-19/2022 (0700-0700)
FBAN: Steve Ziel	Signed: /z/ <i>[Signature]</i>

Assumptions: *A little cooler, increased relative humidity, and a persistent inversion will produce moderated fire behavior potential for today and tonight – but, it is still fire season in the middle of October. We continue to have all the ingredients for very active fire behavior due to low RH, abundant dry fuels, and numerous heat sources across a large area. Expect favorable burning conditions between 1300-1800 during peak heating, and best air mixing. All fuels are very dry, leaves are falling, and the shrubs are entering dormancy. The combination of wind, temperature, humidity, and a heat source may result in very active fire behavior. Southerly aspects are remaining sunny, while north aspects are gaining shadow time.*

Weather Summary

*See attached Fire Weather Forecast

Fire Behavior Summary

Fuels in the fire area are primarily composed of *Timber Litter*, and *Timber with Understory*. Primary tree species include mixed sizes of Douglas Fir, Western Hemlock, with scattered cedar. Local timber litter is compact to fluffy with green moss. Shrub and understory species include mixed hardwoods, and dog-hair conifer thickets. Large snags and heavy fuel concentrations are common throughout all areas. Live woody fuels are marginally contributing to fire rate of spread and fire intensity. Fuel conditions change by elevation, and aspect. Low crown base height (ladder fuels) and thick moss are present in most of the timbered areas. **Lots of hardwood leaf litter.**

Today's potential fire behavior will likely include areas transitioning from smoldering/creeping to active surface fire spread with flare ups and occasional torching. Primary spread mechanism includes flames creeping into unburned fuels that result in moving fire and flare ups. Wind/slope alignment on may contribute to flare ups with torching and short head fire runs with spotting. Fire activity may extend later on southwest aspects (warmer, dryer, longer). High re-burn/re-ignite potential where fuels have lightly burned and in patchy burn areas. Moss may contribute to torching and snags may fall causing flare-ups.

* **Fine fuel moisture= 6%-9%, 1000hr. moisture=12%, Woody fuels 190%, Probability of Ignition-40%-60%**

Fuel Type	Rate of Spread	Flame Length	Spotting Distance
...If your work area includes -	(CH/HR = FPM)	Feet	
Timber Litter (TL5) Heavy	3-5	2	0.1 mi.
Timber w/ Understory (TU5) Heavy	6-8	6-8	0.1 mi.
Timber w/ Understory (TU2) Moderate	7-9	3-4	0.1 mi.

Specific Assignments:

- Div. A** – Monitor fire activity on lower slopes for flare-ups. Expect increased activity in freshly burned areas north of Skykomish for due to river flow winds. Monitor Beckler River corridor, and SW/SW Sec. 6 below 6510 for flare ups and rekindle in ratty burn areas.
- Div. S** – Monitor flanking/backing on Heybrook Ridge, and 6022 Rd. (Sec. 26), and increased activity in lower Barclay Creek (Sec. 35).
- Div. P** – Monitor Hwy 2 corridor for flare ups. Expect areas of re-burn. Expect rolling materials on steep slopes in the tunnel area.
- Div. Z** – Expect continued flare ups, and areas of unburned fuels to consolidate in the Eagle Rock, and upper Eagle Creek area.

Air Operations: Moderate inversion breaking by mid-morning. Expect hazy/smoky conditions due to local fires.

Safety

Not a day to drop your guard..... Unexpected flare-ups are possible, multiple flare-ups may occur with unburned fuel pockets and a little wind. Multiple simultaneous flare-ups become critical without LCES. Plan ahead for actions to take; travel takes time!! Review the Watch Out Situations with your resources– can you mitigate?? Lined to unlined only takes one ember.

At all times.....**Keep informed on fire weather conditions and forecasts** (read the Fire and Weather forecasts, observe weather changes throughout the day, listen to radio). **Know what your fire is doing at all times** (observe smoke, flames, direction, note changing conditions).

*Today's Fire Behavior Forecast contains 649 words written for your situational awareness.

IAP

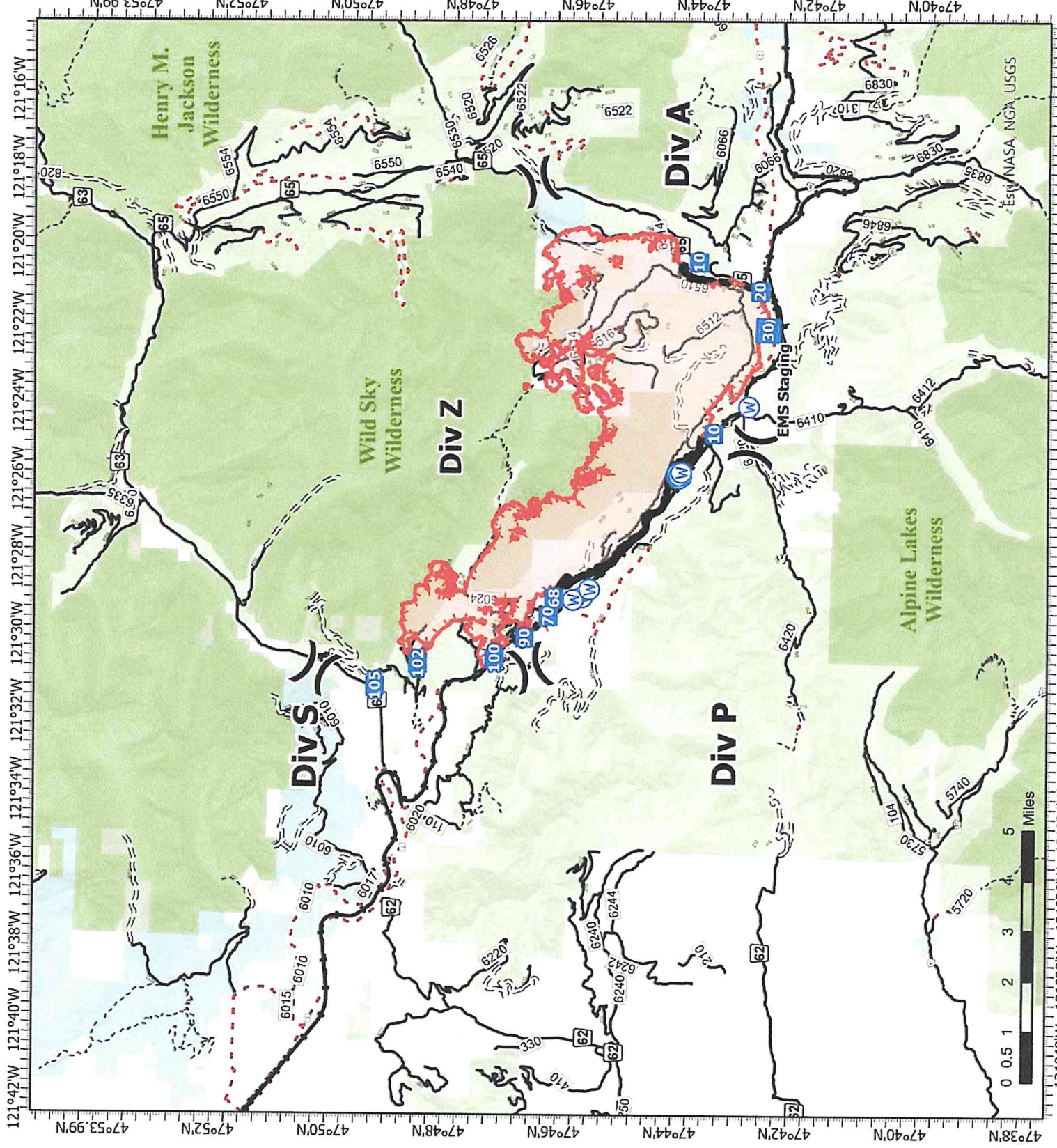
Bolt Creek

WA-NWS-000150

10/18/2022

14,618 acres at 10/16/2022 @1915

- X Division Break
- Medical
- Drop Point
- Water Source
- Contained
- Uncontained
- Bureau of Land Management (BLM)
- State
- US Forest Service (USFS)
- Private
- Undetermined
- Railroads
- Open Roads
- Closed Roads
- Decommissioned Roads
- Decommissioned Roads
- Trail
- Wilderness



Map updated:
10/17/2022 2004

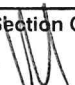
Division/Group Assignment List (ICS 204 WF)
Controlled Unclassified Information//Basic

1. Incident Name:			3.			
BOLT CREEK			Branch:		Division/Group	
2. Operational Period: DAY/NIGHT SHIFT			A			
Date/Time From: 10/18/2022 0700 TUE		Date/Time To: 10/19/2022 0700 WED				
4. Operations Personnel						
OPERATIONS CHIEF		RYAN NICHOLLS 509-430-1606		PLANNING OPS		WES LONG 360-281-9585
FIELD OPS				DIVISION/GROUP SUPERVISOR		KENNETH JOHNSON 509-496-5452
5. Resources Assigned this Period						
Strike Team / Task Force / Resource Designator		LWD	Leader	Number Persons	Drop Off PT./Time	Pick Up PT./Time
C-21 CRW2 NORTH PACIFIC FORESTRY INC.		10/26	JESUS CHIPREZ	20	ICP/0700	ICP/1900
O-211 FMOD BAILEY LOGGING		10/25	BEN A NEWMAN	2	ICP/0700	ICP/1900
O-244 FMOD LL MEADOW WILDFIRE INC.		10/26	RICK WARD	2	ICP/0700	ICP/0700
E-179 CHP2 ROAD HOME, INC.		10/20	ANDREW GIBBS	2	ICP/0700	ICP/1900
O-224 STEN BRIAN WESEMANN 360-749-6128		10/22		1	ICP/0700	ICP/0700
E-130 ENG6 LATE SUMMERS WILDFIRE		10/22	JENSEN BOVEE	3	ICP/0700	ICP/1900
E-131 ENG3 MEADOW WILDFIRE		10/29	DAMIEN RAMON	3	ICP/0700	ICP/0700
E-133 ENG5 RAINIER WILDFIRE		10/23	SPENCER SHAW	3	ICP/0700	ICP/1900
E-134 ENG NORTHRIDGE WILDFIRE		10/24	BRITTANY NORDHAGEN	3	ICP/0700	ICP/1900
E-135 ENG RAINIER WILDFIRE		10/20	MICHAEL SUTTON	3	ICP/0700	ICP/1900
O-233 TFLD DALE HEIDAL 360-4029-494		10/23		1	ICP/0700	ICP/0700
E-136 ENG6 LIBERTY WILDFIRE, INC.		10/21	EDWARD KENNEY	3	ICP/0700	ICO/1900
E-138 ENG4 CHEWACK WILDFIRE INC		10/26	ANDREW GRAVES	3	ICP/0700	ICP/0700
E-193 ENG5 METHOW RIVER WILD FIRE		10/26	RICHIE HARVEY	3	ICP/0700	ICP/0700
E-197 ENG6 METHOW RIVER WILD FIRE		10/26	JEFF HERRON	3	ICP/0700	ICP/1900
8. Division/Group Communication Summary						
Function	Channel	RX Frequency N/W	RX Tone/NAC	TX Frequency N/W	TX Tone/NAC	Mode
TACTICAL	1	151.3100	118.8	151.3100	118.8	A
COMMAND	7	159.4125	118.8	151.4450	118.8	A
COMMAND	8	159.3750	118.8	151.3250	118.8	A
AIR TO GROUND	12	164.9500	0.0	164.9500	0.0	A
AIR TO GROUND	13	168.8125		168.8125		A
AIR GUARD	16	168.6250	000.0	168.6250	110.9	A
9. Prepared By (Resource Unit Leader)			Approved By (Planning Section Chief)		Date	Time
			RYAN SCHARNHORST		10/16/2022	2313

Division/Group Assignment List (ICS 204 WF)
Controlled Unclassified Information//Basic

1. Incident Name:			3.			
BOLT CREEK			Branch:		Division/Group	
2. Operational Period: DAY/NIGHT SHIFT					A	
Date/Time From: 10/18/2022 0700 TUE		Date/Time To: 10/19/2022 0700 WED				
4. Operations Personnel						
OPERATIONS CHIEF		RYAN NICHOLLS 509-430-1606		PLANNING OPS		WES LONG 360-281-9585
FIELD OPS				DIVISION/GROUP SUPERVISOR		KENNETH JOHNSON 509-496-5452
5. Resources Assigned this Period						
Strike Team / Task Force / Resource Designator		LWD	Leader	Number Persons	Drop Off PT./Time	Pick Up PT./Time
E-209 ENG4 CHEWACK WILDFIRE INC		10/27	GREG ISAAC	3	ICP/0700	ICP/1900
E-143 WTS2 SKYKOMISH FIRE		10/25	ROBERT CAMPBELL	1	ICP/0700	ICP/1900
O-240 SOFR RYAN GRANT 509-254-1672		10/27		1	ICP/0700	ICP/1900
O-255 EMPF JOEL BOWER 360-461-7390		10/27		1	ICP/0700	ICP/1900
6. Control Operations/Work Assignments:						
<p>Task: Hold fire from crossing Hwy 2, reinforce primary control lines, and maintain patrol status within the division. Maintain IA readiness.</p> <p>Purpose: Confine the fire to its current footprint. Limit the impacts of fire spread around infrastructure, structures, timber, and other identified values at risk.</p> <p>End State: Fire is confined to the existing footprint and defensive preparations are in place around all infrastructures and structures.</p>						
7. Special Instructions:						
<p><u>Special Notice: STEN and engines with astricts (***) next to their resource number are part of the Strike Team that will be used for IA.</u></p> <ul style="list-style-type: none"> Utilize Field Maps and Avenza to input suppression repair needs. Text weather to IMET at 240-778-5298 at 1400 hours. Notify WA DOT of trees or debris falling on the highway. When addressing road hazards, utilize a vehicle equipped with emergency warning lights after blocking the roadway. Backhaul unused equipment to base camp. Verify inventory is accurate, then submit to LOGS. 						
8. Division/Group Communication Summary						
Function	Channel	RX Frequency N/W	RX Tone/NAC	TX Frequency N/W	TX Tone/NAC	Mode
TACTICAL	1	151.3100	118.8	151.3100	118.8	A
COMMAND	7	159.4125	118.8	151.4450	118.8	A
COMMAND	8	159.3750	118.8	151.3250	118.8	A
AIR TO GROUND	12	164.9500	0.0	164.9500	0.0	A
AIR TO GROUND	13	168.8125		168.8125		A
AIR GUARD	16	168.6250	000.0	168.6250	110.9	A
9. Prepared By (Resource Unit Leader)			Approved By (Planning Section Chief)		Date	Time
			RYAN SCHARNHORST		10/16/2022	2313

Division/Group Assignment List (ICS 204 WF)
Controlled Unclassified Information//Basic

1. Incident Name:				3.		
BOLT CREEK				Branch:	Division/Group P	
2. Operational Period: DAY/NIGHT SHIFT						
Date/Time From: 10/18/2022 0700 TUE		Date/Time To: 10/19/2022 0700 WED				
4. Operations Personnel						
OPERATIONS CHIEF		RYAN NICHOLLS 509-430-1606		DIVISION/GROUP SUPERVISOR		BRAD WALLACE 509-899-1057
AIR ATTACK SUPERVISOR				PLANNING OPS		WES LONG 360-281-9585
5. Resources Assigned this Period						
Strike Team / Task Force / Resource Designator		LWD	Leader	Number Persons	Drop Off PT./Time	Pick Up PT./Time
O-251 STEN CORY BERGSTROM (T)		10/26	360-461-7390	1	ICP/0700	ICP/1900
E-198 ENG6 METHOW RIVER WILD FIRE		10/26	IVAN MUNOZ	3	ICP/0700	ICP/1900
E-203 ENG5 AMERICAN LAND SERVICE LLC		10/27	CHRISTIAN MARTINSON	3	ICP/0700	ICP/1900
E-205 ENG6 SOUTH COUNTY		10/27	ANDREW LUNNY	2	ICP/0700	ICP/1900
E-206 ENG6 WOODPECKER CO		10/27	MICHELLE HERRIN	3	ICP/0700	ICP/1900
E-207 ENG3 RATTLESNAKE RIDGE		10/27	FABIAN BREMERMAN	3	ICP/0700	ICP/1900
O-240 SOFR RYAN GRANT 509-254-1672		10/27		1	ICP/0700	ICP/1900
E-185 AMB2 CENTAL KITSAP		10/22	TREVOR LEE STANLEY 360-620-6558	2	ICP/0700	ICP/1900
6. Control Operations/Work Assignments:						
<p>Task: Hold fire from crossing Hwy 2, reinforce primary control lines, patrol, and maintain patrol status within the division.</p> <p>Purpose: Confine the fire to its current footprint. Limit the impacts of fire spread around infrastructure, structures, timber, and other identified values at risk.</p> <p>End State: Fire is confined to the existing footprint and defensive preparations are in place around all infrastructure and structures.</p>						
7. Special Instructions:						
<ul style="list-style-type: none"> Notify WA DOT of trees or debris falling on the highway. When addressing road hazards, utilize a vehicle equipped with emergency warning lights after blocking the roadway. Clear leaf litter from control lines. 						
8. Division/Group Communication Summary						
Function	Channel	RX Frequency N/W	RX Tone/NAC	TX Frequency N/W	TX Tone/NAC	Mode
TACTICAL	3	151.2125	118.8	151.2125	118.8	A
COMMAND	7	159.4125	118.8	151.4450	118.8	A
COMMAND	8	159.3750	118.8	151.3250	118.8	A
AIR TO GROUND	12	164.9500	0.0	164.9500	0.0	A
AIR TO GROUND	13	168.8125		168.8125		A
AIR GUARD	16	168.6250	000.0	168.6250	110.9	A
9. Prepared By (Resource Unit Leader)			Approved By (Planning Section Chief)		Date	Time
RYAN SCHARNHORST					10/16/2022	2313

Division/Group Assignment List (ICS 204 WF)
Controlled Unclassified Information//Basic

1. Incident Name:				3.			
BOLT CREEK				Branch:		Division/Group	
2. Operational Period: DAY/NIGHT SHIFT						P	
Date/Time From: 10/18/2022 0700 TUE		Date/Time To: 10/19/2022 0700 WED					
4. Operations Personnel							
OPERATIONS CHIEF		RYAN NICHOLLS 509-430-1606		DIVISION/GROUP SUPERVISOR		BRAD WALLACE 509-899-1057	
AIR ATTACK SUPERVISOR				PLANNING OPS		WES LONG 360-281-9585	
7. Special Instructions:							
<ul style="list-style-type: none"> • Text weather to IMET at 240-778-5298 at 1400 hours. • Back haul unused equipment to base camp. • Identify and make appropriate notifications for all hazards along the BPA high-tension power line corridor. 							
8. Division/Group Communication Summary							
Function	Channel	RX Frequency N/W	RX Tone/NAC	TX Frequency N/W	TX Tone/NAC	Mode	
TACTICAL	3	151.2125	118.8	151.2125	118.8	A	
COMMAND	7	159.4125	118.8	151.4450	118.8	A	
COMMAND	8	159.3750	118.8	151.3250	118.8	A	
AIR TO GROUND	12	164.9500	0.0	164.9500	0.0	A	
AIR TO GROUND	13	168.8125		168.8125		A	
AIR GUARD	16	168.6250	000.0	168.6250	110.9	A	
9. Prepared By (Resource Unit Leader)			Approved By (Planning Section Chief)			Date	Time
			RYAN SCHARNHORST			10/16/2022	2313

Division/Group Assignment List (ICS 204 WF)
Controlled Unclassified Information//Basic

1. Incident Name:			3.			
BOLT CREEK			Branch:		Division/Group	
2. Operational Period:			DAY/NIGHT SHIFT			
Date/Time From: 10/18/2022 0700 TUE		Date/Time To: 10/19/2022 0700 WED		S		
4. Operations Personnel						
OPERATIONS CHIEF		RYAN NICHOLLS 509-430-1606		PLANNING OPS		WES LONG 360-281-9585
FIELD OPS				DIVISION/GROUP SUPERVISOR		NICHOLAS LOEWEN 541-620-4318
5. Resources Assigned this Period						
Strike Team / Task Force / Resource Designator		LWD	Leader	Number Persons	Drop Off PT./Time	Pick Up PT./Time
O-206.19 TFLD MICHAEL NICK 509-563-9188		10/19		1	ICP/0700	ICP/1900
C-17 CR2I MT BAKER IA		10/21	ERIK USHER	20	ICP/0700	ICP/0700
C-19 CR2I GRAYBACK FORESTRY, INC.		10/23	TIMOTHY BREWER	20	ICP/0700	ICP/1900
C-20 CR2I SES AHTANUM		10/26	JEFFREY DELAROSA	16	ICP/0700	ICP/1900
O-272 FELB KELLY SENSECQUA		10/31		1	ICP/0700	ICP/1900
O-219 FELB(T) DANIEL OAKLAND 401-258-4702		10/18		1	ICP/0700	ICP/1900
O-194 FMOD MOUNTAIN WEST WILD FIRE		10/30	CHARLIE DOW	2	ICP/0700	ICP/0700
O-274 FMOD RAINS, DAVID - F-20-1 - FM-1		10/29		2	ICP/0700	ICP/0700
O-275 FMOD FMOD - FALLER MODULE				2	ICP/0700	ICP/0700
E-139 ENG5 BLACKSTONE FORESTRY LLC		10/19	TARYN THOMAS	3	ICP/0700	ICP/1900
E-176 ENG5 OSPREY WILDFIRE, LLC		10/19	DUSTIN WILLIAMS	3	ICP/0700	ICP/1900
E-208 ENG4 HI COUNTRY L.L.C.		10/26	CODY SUTTON	3	ICP/0700	ICP/1900
E-150 CHP2 BROTHERS FIRE		10/19	SHANE MUSTARD	3	ICP/0700	ICP/1900
E-149 DOZ2 BURGESS LOGGING		10/24	BUZZ CREIGHTON	2	ICP/0700	ICP/0700
O-242 STEN ANDREW KLUNDER 605-484-5611		10/27		1	ICP/0700	ICP/1900
E-194 ENG5 EARLY WINTERS		10/26	CHRIS SURFACE	3	ICP/0700	ICP/1900
E-196 ENG5 C2C WILDFIRE INC.		10/26	BRYCE HOLBROOK	3	ICP/0700	ICP/1900
E-199 ENG6 BLACKSTONE FORESTRY, LLC		10/26	RILEY NOONAN	3	ICP/0700	ICP/1900
8. Division/Group Communication Summary						
Function	Channel	RX Frequency N/W	RX Tone/NAC	TX Frequency N/W	TX Tone/NAC	Mode
TACTICAL	2	151.3400	118.8	151.3400	118.8	A
COMMAND	8	159.3750	118.8	151.3250	118.8	A
COMMAND	7	159.4125	118.8	151.4450	118.8	A
AIR TO GROUND	12	164.9500	0.0	164.9500	0.0	A
AIR TO GROUND	13	168.8125		168.8125		A
AIR GUARD	16	168.6250	000.0	168.6250	110.9	A
9. Prepared By (Resource Unit Leader)			Approved By (Planning Section Chief)		Date	Time
			RYAN SCHARNHORST		10/16/2022	2313

Division/Group Assignment List (ICS 204 WF)
Controlled Unclassified Information//Basic

1. Incident Name:			3.			
BOLT CREEK			Branch:		Division/Group	
2. Operational Period:			DAY/NIGHT SHIFT			
Date/Time From: 10/18/2022 0700 TUE		Date/Time To: 10/19/2022 0700 WED		S		
4. Operations Personnel						
OPERATIONS CHIEF		RYAN NICHOLLS 509-430-1606		PLANNING OPS		WES LONG 360-281-9585
FIELD OPS				DIVISION/GROUP SUPERVISOR		NICHOLAS LOEWEN 541-620-4318
5. Resources Assigned this Period						
Strike Team / Task Force / Resource Designator		LWD	Leader	Number Persons	Drop Off PT./Time	Pick Up PT./Time
E-200 ENG6 WILD FIRE SERVICES INC		10/26	JASON SARE	3	ICP/0700	ICS/1900
E-202 ENG6 SNOHOMISH FD21		10/27	VIVEK PATEL	2	ICP/0700	ICP/1900
E-184 WTS2 SNOHOMISH FD25 - T37A		10/20	JAY FISCHER	1	ICP/0700	ICP/1900
O-268 EMPF SANDRA ZELEPUZA		10/28	360-580-8833	1	ICP/0700	ICP/1900
O-257 EMPF DANIELLE STUMPF		10/27	253-881-8436	1	ICP/0700	ICP/1900
O-259 EMTF SPENCER WILSON		10/28		1	ICP/0700	ICP/1900
6. Control Operations/Work Assignments:						
<p>Task: Hold fire from crossing 6022 Rd., reinforce primary control lines, clear roadways to provide for safe travel, and maintain patrol status within the division.</p> <p>Purpose: Confine the fire to its current footprint. Limit the impacts of fire spread around infrastructure, structures, timber, and other identified values at risk.</p> <p>End State: Fire is confined to the existing control lines and defensive preparations are in place around all infrastructure, structures, and roads are cleared of debris reducing the hazards to firefighters and the public.</p>						
7. Special Instructions:						
<ul style="list-style-type: none"> Ambulance (E-185), "AMBO2", is staged at Money Creek. Improve spur 120 off of 6022 Road Reassess current indirect line placement for effectiveness. Text weather to IMET at 240-778-5298 at 1400 hours. 						
8. Division/Group Communication Summary						
Function	Channel	RX Frequency N/W	RX Tone/NAC	TX Frequency N/W	TX Tone/NAC	Mode
TACTICAL	2	151.3400	118.8	151.3400	118.8	A
COMMAND	8	159.3750	118.8	151.3250	118.8	A
COMMAND	7	159.4125	118.8	151.4450	118.8	A
AIR TO GROUND	12	164.9500	0.0	164.9500	0.0	A
AIR TO GROUND	13	168.8125		168.8125		A
AIR GUARD	16	168.6250	000.0	168.6250	110.9	A
9. Prepared By (Resource Unit Leader)			Approved By (Planning Section Chief)		Date	Time
			RYAN SCHARNHORST		10/16/2022	2313

Division/Group Assignment List (ICS 204 WF)
Controlled Unclassified Information//Basic

1. Incident Name:			3.			
BOLT CREEK			Branch:	Division/Group Z		
2. Operational Period: DAY/NIGHT SHIFT						
Date/Time From: 10/18/2022 0700 TUE		Date/Time To: 10/19/2022 0700 WED				
4. Operations Personnel						
OPERATIONS CHIEF		RYAN NICHOLLS 509-430-1606		BRANCH DIRECTOR		
DIVISION/GROUP SUPERVISOR				AIR ATTACK SUPERVISOR		
DIVISION/GROUP SUPERVISOR		UNSTAFFED				
5. Resources Assigned this Period						
Strike Team / Task Force / Resource Designator		LWD	Leader	Number Persons	Drop Off PT./Time	Pick Up PT./Time
NO ASSIGNED RESOURCES						
6. Control Operations/Work Assignments:						
Task: Unstaffed. Take no action(s).						
Purpose:						
End State:						
7. Special Instructions:						
8. Division/Group Communication Summary						
Function	Channel	RX Frequency N/W	RX Tone/NAC	TX Frequency N/W	TX Tone/NAC	Mode
COMMAND						
TACTICAL						
LOGISTICS						
AIR TO GROUND						
9. Prepared By (Resource Unit Leader)			Approved By (Planning Section Chief)		Date	Time
DAVID WINTER			RYAN SCHARNHORST		10/16/2022	2313

Division/Group Assignment List (ICS 204 WF)
Controlled Unclassified Information//Basic

1. Incident Name:				3.		
BOLT CREEK				Branch:	Division/Group	
2. Operational Period: DAY/NIGHT SHIFT						
Date/Time From: 10/18/2022 0700 TUE		Date/Time To: 10/19/2022 0700 WED		STRUCTURE		
4. Operations Personnel						
OPERATIONS CHIEF		RYAN NICHOLLS 509-430-1606		DIVISION/GROUP SUPERVISOR		AARON BIBE 509-591-8620
PLANNING OPS		WES LONG 360-281-9585				
5. Resources Assigned this Period						
Strike Team / Task Force / Resource Designator		LWD	Leader	Number Persons	Drop Off PT./Time	Pick Up PT./Time
E-175 ENG5 E8142 - WA-SPS		10/21	REECE JOHNSON	4	ICP/0700	ICP/1900
E-177 ENG5 LIBERTY WILDFIRE		10/24	KATHLEEN CALVIN	3	ICP/0700	ICP/1900
E-180 ENG5 WA-OLS		10/23	REGGIE BUATTNOR 360-670-7320	3	ICP/0700	ICP/1900
E-182 ENG5 METHOW RIVER WILD		10/23	JOHN NEUNEKOR 509-409-1485	3	ICP/0700	ICP/1900
E-183 ENG5 LL MEADOW WILDFIRE		10/21	WESLEY JAMES	3	ICP/0700	ICP/1900
6. Control Operations/Work Assignments:						
<p>Task: Hold fire from crossing Hwy 2, implement the structural defense plan with an emphasis on perimeter control, and maintain patrol status within the division.</p> <p>Purpose: Limit the impacts of fire spread around infrastructure, structures, timber, and other identified values at risk.</p> <p>End State: Defensive preparations are in place around all infrastructure and structures.</p>						
7. Special Instructions:						
<ul style="list-style-type: none"> • Maintain awareness of construction traffic along 63 Road. • If the fire crosses 6022 Road, implement the structure protection plan at Haybrook Lookout. 						
8. Division/Group Communication Summary						
Function	Channel	RX Frequency N/W	RX Tone/NAC	TX Frequency N/W	TX Tone/NAC	Mode
TACTICAL	5	153.8300	000.0	153.8300	000.0	A
COMMAND	7	159.4125	118.8	151.4450	118.8	A
COMMAND	8	159.3750	118.8	151.3250	118.8	A
AIR TO GROUND	12	164.9500	0.0	164.9500	0.0	A
AIR TO GROUND	13	168.8125		168.8125		A
AIR GUARD	16	168.6250	000.0	168.6250	110.9	A
9. Prepared By (Resource Unit Leader)			Approved By (Planning Section Chief)		Date	Time
			RYAN SCHARNHORST		10/17/2022	1606

Division/Group Assignment List (ICS 204 WF)
Controlled Unclassified Information//Basic

1. Incident Name:				3.			
BOLT CREEK				Branch:		Division/Group	
2. Operational Period:				DAY/NIGHT SHIFT			
Date/Time From: 10/18/2022 0700		TUE		Date/Time To: 10/19/2022 0700		WED	
				NIGHT SHIFT			
4. Operations Personnel							
OPERATIONS CHIEF		RYAN NICHOLLS 509-430-1606			PLANNING OPS		WES LONG 360-281-9585
DIVISION/GROUP SUPERVISOR							
5. Resources Assigned this Period							
Strike Team / Task Force / Resource Designator		LWD	Leader	Number Persons	Drop Off PT./Time	Pick Up PT./Time	
E-181 ENG5 ENGINE-1101 WAOLS		10/21	BLAKE MANN	4			
E-189 ENG6 SNOHOMISH FD26		10/22	NOLAN JON HEISEL	2	ICP/1900	ICP/0700	
6. Control Operations/Work Assignments:							
<p>Task: Hold fire from crossing Hwy 2, reinforce primary control lines, provide point protection for values at risk, and maintain patrol status within all divisions (except DIV Z).</p> <p>Purpose: Confine the fire to its current footprint. Limit the impacts of fire spread around infrastructure, structures, timber, and other identified values at risk.</p> <p>End State: Fire is confined to the existing footprint and defensive preparations are in place around all infrastructure and structures.</p>							
7. Special Instructions:							
<p>COML receives all IWI notifications. Provide updates directly to the COML.</p> <p>Provide night watch for helicopter ONW at Skykomish airport, and as needed, report to Communications at 360-259-7651.</p> <p>WSP is patrolling the area. Contact Communications if assistance is needed.</p>							
8. Division/Group Communication Summary							
Function	Channel	RX Frequency N/W	RX Tone/NAC	TX Frequency N/W	TX Tone/NAC	Mode	
TACTICAL	1	151.3100	118.8	151.3100	118.8	A	
COMMAND	7	159.4125	118.8	151.4450	118.8	A	
COMMAND	8	159.3750	118.8	151.3250	118.8	A	
AIR TO GROUND	12	164.9500	0.0	164.9500	0.0	A	
AIR TO GROUND	13	168.8125		168.8125		A	
AIR GUARD	16	168.6250	000.0	168.6250	110.9	A	
9. Prepared By (Resource Unit Leader)			Approved By (Planning Section Chief)			Date	Time
			RYAN SCHARNHORST			10/16/2022	2313

Division/Group Assignment List (ICS 204 WF)
Controlled Unclassified Information//Basic

1. Incident Name:			3.			
BOLT CREEK			Branch:		Division/Group	
2. Operational Period: DAY/NIGHT SHIFT					65 ROAD CLOSURE	
Date/Time From: 10/18/2022 0700 TUE		Date/Time To: 10/19/2022 0700 WED				
4. Operations Personnel						
OPERATIONS CHIEF		RYAN NICHOLLS 509-430-1606		PLANNING OPS		WES LONG 360-281-9585
DIVISION SUPERVISOR		BRIAN MCNEIL 425-365-6067				
5. Resources Assigned this Period						
Strike Team / Task Force / Resource Designator		LWD	Leader	Number Persons	Drop Off PT./Time	Pick Up PT./Time
ROAD SECURITY (GUARD)		10/22	SARAH LARSEN	1	RD 65/0600	RD 65/2200
ROAD SECURITY (GUARD)		10/22	AVERY PAYNE	1	RD 65/0600	RD 65/2200
ROAD SECURITY (GUARD)		10/22	FRANK ROSCIGNO	1	RD 65/0600	RD 65/2200
6. Control Operations/Work Assignments:						
<ul style="list-style-type: none"> • USFS will provide security to the 65 Road closure. • Assist fire resources working in the area with access around the road closure and direct public traffic past the road closure location. 						
7. Special Instructions:						
If you need access when working in the 65 Road area, or if you have any traffic issues, contact the Forest Service's Guards on Command Channel 8 for assistance.						
8. Division/Group Communication Summary						
Function	Channel	RX Frequency N/W	RX Tone/NAC	TX Frequency N/W	TX Tone/NAC	Mode
TACTICAL	1	151.3100	118.8	151.3100	118.8	A
COMMAND	8	159.3570	118.8	151.3250	118.8	A
9. Prepared By (Resource Unit Leader)			Approved By (Planning Section Chief)		Date	Time
			RYAN SCHARNHORST		10/16/2022	2313

INCIDENT RADIO COMMUNICATIONS PLAN (ICS 205)

Controlled Unclassified Information//Basic

1. Incident Name:		2. Date/Time Prepared:		3. Operational Period:		DAY/NIGHT SHIFT				
BOLT CREEK		Date:	10/16/2022	Date/Time From:	10/18/2022 0700	Date/Time To:	10/19/2022 0700			
		Time:	2313		TUE		WED			
4. Basic Radio Channel Use:										
Zone Group	Ch #	Function	Channel Name/Trunked Radio System Talkgroup	Assignment	RX Freq	RX Tone/NAC	TX Freq	TX Tone/NAC	Mode (A,D, or M)	Remarks
	1	TACTICAL	TAC 1	DIV A	151.3100	118.8	151.3100	118.8	A	
	2	TACTICAL	TAC 2	DIV S	151.3400	118.8	151.3400	118.8	A	
	3	TACTICAL	TAC 3	DIV P	151.2125	118.8	151.2125	118.8	A	
	4	TACTICAL	DNR COM	UNASSIGNED	151.4150	103.5	151.4150	103.5	A	IA USE ONLY
	5	TACTICAL	REDNET	STRUCTURE	153.8300	000.0	153.8300	000.0	A	
	6	TACTICAL	FS FTAC	IA / FIRING GROUP	168.5625	000.0	168.5625	000.0	A	IA/FIRING GROUP
	7	COMMAND	CMD 7	ALL DIVS	159.4125	118.8	151.4450	118.8	A	LOCATED NORTH OF INDEX LINKED TO CMD 8
	8	COMMAND	CMD 8	ALL DIVS	159.3750	118.8	151.3250	118.8	A	LOCATED ON SOBIESKI LINKED TO CMD 7
	9	COMMAND	SNOHOMIS	FOREST NET	159.4350	141.3	151.1900	141.3	A	DISPATCH CALL SIGN "NW DISPATCH" IA USE ONLY
	10	COMMAND	SULTAN	FOREST NET	159.2475	141.3	151.1825	141.3	A	DISPATCH CALL SIGN "NW DISPATCH" IA USE ONLY
	11	COMMAND	SOBIESKI	FOREST NET	169.5750	146.2	164.9625	156.7	A	DISPATCH CALL SIGN "PUGET SOUND" IA USE ONLY
	12	AIR TO GROUND	A/G PRIMARY	ALL DIVS	164.9500	0.0	164.9500	0.0	A	PRIMARY A/G
	13	AIR TO GROUND	A/G2	ALL DIVS	168.8125		168.8125		A	SECONDARY A/G
	14	AIR TO GROUND	A/G 41	UNASSIGNED	167.4750	000.0	167.4750	000.0	A	
	15	AIR TO GROUND	VMED 29	MEDEVAC	155.3475	156.7	155.3475	156.7	A	MEDEVAC
	16	AIR GUARD	AIRGUARD	EMERGENCY USE	168.6250	000.0	168.6250	110.9	A	EMERGENCY USE
5. Special Instructions:										
6. Prepared By		(Communications Unit Leader)		Name: PAUL CARLYLE		Signature:				
ICS 205				IAP Page		Date/Time: 10/16/2022 2313				

Controlled Unclassified Information//Basic
FINAL

HEALTH AND SAFETY MESSAGE

SAFETY starts with *YOU*

We are ALL accountable for SAFE behaviors

INCIDENT: Bolt Creek

DATE Oct 18, 2022 Day and night shift

Major Tasks, Hazards and Risks on this incident:

Driving: Watch your speed and Drive defensively turn on your headlights and fasten your seatbelt!

Steep Terrain: Watch footing to avoid slips, trips and falls. Beware of people working below you.

Communications: Communicate face-to-face for critical messages and conversations if possible.

Mission over safety? Make deliberate decisions about how much risk to take-- risk vs benefit. Share your thoughts with chain of command, get buy-in and share risk.

Be Ready! Practice your Incident within Incident response! Know your role in it. Expect the unexpected. Know where your Line Medics, and extraction points, and resources are.

Personal Hygiene Issues- Take some time for you! Wash your hands and shower when you get a chance and get adequate rest.

Hydration: Drink fluids before you are thirsty. You need mostly water with some electrolytes (Gatorade etc.) as well.

Power lines: Working around any power lines is high risk with potentially deadly consequences. Keep safe working distance from live lines. ALL lines are live until you are notified by utility company or direct chain of command. Review IRPG pages 24 -25 for guidance. **Do not remove lodged trees from powerlines.**

Bad Roads: Access to and from the fire from highway 2 is on narrow, dusty, curvy, roads with major potholes and sections of washboard surface. Slow down. You may encounter members of the public driving these roads despite closures. Slow down.

Watch out for each other and make good decisions

Incident Safety Officer: Ken Foss



Bolt Creek Fire

Logistics Information

Base Camp Operating

Quiet Hours	2200 – 0500
Supply	0600 – 2100
Food	0600 - 0900 and 1730 – 2100
Medical Tent	0600 – 2100 (available 24 hours – after posted hours, please call the number posted on the medical Yurt.)
Refer Van	0600 – 2000 for lunch and ice pick-ups
Showers	05:30 – 1200 and 1500 – 2200
Supply	0600 – 2100
Laundry	Drop off clothes to Supply by <u>0830</u> hrs. Expect a 48-hour turn-around. Pick-up for laundry will be at Supply.
Supply Orders	All supply orders need to be into the logistics by <u>1800</u> hrs. for Next-day delivery.

NOTE: All equipment and Overhead request have a 48-hour lag time.

Bolt Creek Fire Information

Fire Information Line 360-370-4170

Email: 2022.boltcreek@firenet.gov

*These are for public information AND to email photos & videos to us!
Text your fire photos and short videos to 360-259-5006*

Facebook Page

[Bolt Creek Fire Information | Facebook](#)

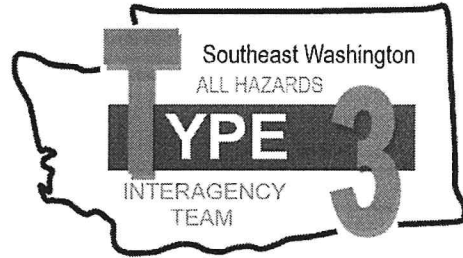
Inciweb

<https://inciweb.nwcc.gov/incident/8417/>

Did you lose or find something? The PIO booth in the corner of the Incident Command Post is the place for Lost and Found. Be prepared to describe what you are looking for. If you're turning something in, please give us time and location of what you found.

Need to mail something? Drop it by the PIO booth and we will drop it in a mailbox for you.

Code of Conduct Incident Personnel



Each individual on this incident is responsible for:

- ☞ Being *ready and able* to perform their assigned duties effectively.
- ☞ Conducting themselves in a manner that treats people with dignity, equality, courtesy, and respect.
- ☞ Abiding by agency ethics and conduct regulations.
- ☞ Reporting any harassment or other inappropriate behavior.

Each individual of this incident has the right to:

- ☞ Work in an environment characterized by safe work practices.
- ☞ Work in a fair and harassment free environment.
- ☞ Say "No" to unwelcome advances or requests for favors.
- ☞ File complaints or grievances through appropriate avenues.

There is zero tolerance for inappropriate behavior while assigned to the incident, including:

- ☞ Illegal drug use
- ☞ Alcohol use
- ☞ Unsafe work practices and activities
- ☞ Discrimination
- ☞ Sexual harassment
- ☞ Fighting, threatening, and abusive behaviors
- ☞ Using social media and electronic communication devices for personal business while engaged in fire assignment duties.
- ☞ Other violations of Fire Service, Washington DNR, and Federal agency standards of conduct.

Failure to adhere to the Code of Conduct could result in dismissal from the incident, with notification to your home unit.

The public expects our best efforts; they see us as professionals in what we say and do. Let's continue to show them we are!

DNR/DOC Camp Crew Guidelines	1. Incident Name	2. Date Prepared	3. Time Prepared
-------------------------------------	------------------	------------------	------------------

ALL PERSONNEL WORKING AROUND OFFENDERS/DNR KITCHENS

This message is from the Department of Natural Resources and Department of Corrections.

- ▶ No person shall be allowed to carry firearms in the area where offenders are working. It is acceptable to secure weapons in vehicles while entering into the working vicinity of offenders.
- ▶ Do not give or take anything from an offender. Offenders are identified by red ball caps or red hard hats.
- ▶ Do NOT take photos or interview offenders without approval from the DNR Inmate Liaison.
- ▶ Do not do any favors for offenders. (Examples: passing on a message, giving tobacco, asking for change, mailing a letter, using a phone. The most innocent act/favor can have consequences that could affect an offender for years.)
- ▶ Report any suspicious act to the Supervisor, DOC Staff or Inmate Liaison.
- ▶ Offenders are not allowed to use tobacco products. Do not use tobacco products in or around kitchen area.
- ▶ Offenders on DNR Crews have committed various crimes. They ARE considered minimum level custody.
- ▶ Treat Offenders with respect, but don't get personal. Practices the correctional distance...don't get personal. Offenders generally feel good with being part of the fire suppression effort; treat them with the same respect and dignity as other fire fighters but, DON'T GET PERSONAL.
- ▶ Offenders are trained in their job assignments and their work ethics. They are held accountable for their job performance and their behavior.
- ▶ Acknowledge crews for a job well done; offenders do good work and appreciate the recognition.
- ▶ Offenders need good professional role models as part of their rehabilitation process. Consider their presence and set good examples by the context of your conversation and choice of language used.

9. Prepared by (Name and Position)

BOLT CREEK

DEMOB LIST

10/18/22



CREWS

C-18	0700	(CR2I)	NORTH PACIFIC FORESTRY INC
------	------	--------	----------------------------

EQUIPMENT

E-150	0700	(CHP2)	BROTHERS FIRE LLC
E-140	1500	(ENG5)	SNO COUNTY FD #15 -BR60
E-141	1500	(ENG5)	SNO COUNTY FD #22 BR68
E-178	1530	(AMB2)	AMBULANCE A-52
E-188	1530	(ENG5)	SNOHOMISH FD16 - BR85A

OVERHEAD

O-220	0000	(AREP)	BERGVALL, LAURIE
O-265	0630	(STEN)	RODGERS, BRENDA
O-247	0700	(WFM1)	WHISKEYTOWN
O-190	1800	(RADO)	ANDERSON, JASON
O-233	1900	(TFLD)	HEIDAL, DALE

10/19/22

EQUIPMENT

E-175	0700	(ENG5)	E8142 - WA-SPS
E-177	0700	(ENG5)	LIBERTY WILDFIRE, INC.
E-180	0700	(ENG5)	ENGINE 1205 - WAOLS
E-182	0700	(ENG5)	METHOW RIVER WILD FIRE
E-183	0700	(ENG5)	LL MEADOW WILDFIRE INC.

OVERHEAD

O-219	0000	(FELB)	OAKLAND, DANIEL
O-229	0000	(PIOF)	SARGEANT, KAREN
O-234	0700	(DIVS)	BIBE, DAVID

BOLT CREEK

DEMOB LIST



10/20/22

EQUIPMENT

E-139	0000	(ENG5)	BLACKSTONE FORESTRY LLC
E-176	0000	(ENG5)	OSPREY WILDFIRE, LLC
E-131	1000	(ENG3)	LL MEADOW WILDFIRE
E-181	1000	(ENG5)	ENGINE-1101 WAOLS
E-189	1000	(ENG6)	ENG6 - SNOHOMISH FD26 - BR54

OVERHEAD

O-206.10	0000	(LSC3)	AMBROSE, JOSH
O-206.3	0000	(SOFR)	CLOUD, RYAN
O-209	0000	(EQPM)	ESKEBERG, CAMERON
O-206.2	0000	(ICT3)	HARRIS, MICHAEL
O-206.18	0000	(DIVS)	JOHNSON, KENNETH
O-206.1	0000	(ICT3)	JOHNSON, LEONARD
O-216	0000	(IMET)	KRIEDERMAN, LISA
O-206.17	0000	(DIVS)	LIPPERT, BENJAMIN
O-206.11	0000	(PTRC)	MAJIDIAN, MARYAM
O-206.4	0000	(OPS3)	NICHOLLS, RYAN
O-206.19	0000	(TFLD)	NICK, MICHAEL
O-206.21	0000	(PIO2)	WILLIAMS, JOSIE
O-206.14	0000	(PSC3)	WINTER, DAVID



BOLT CREEK FIRE

ANDY PALMER/DUTCH CREEK EMERGENCY MEDICAL EVACUATION TIMES

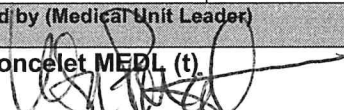
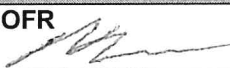
LEADER'S INTENT: To establish **approximate** travel times from key areas of the fire to Skykomish Airport, as well as area hospitals by ground transportation. See Medical Plan (ICS206) for travel times via air and Heli spot Lat and Long. Not all DPs are on the chart. Travel times are approximate, and one should always consider weather, time of day, traffic, and road/trail conditions.

Ground Transport Only	Skykomish Airport	Evergreen Health Monroe	Providence Medical Center (Everett)	Harborview Medical Center (Seattle)
DP-10 (Beckler River CG)	4 Mins	50 Mins	1 Hr 10 Mins	1 Hr 30 Mins
DP-20 (FS-65 and HWY 2)	2 Mins	45 Mins	1 Hr 5 Mins	1 Hr 25 Mins
DP-30 (Smokey's)	2 Mins	45 Mins	2 Hr 5 Mins	1 Hr 25 Mins
DP-50 (Grotto)	8 Mins	40 Mins	1 Hr	1 Hr 20 Mins
DP-68 (Jim's Place)	15 Mins	40 Mins	1 Hr	1 Hr 20 Mins
DP-90 (Railroad)	11 Mins	35 Mins	1 Hr	1 Hr 20 Mins
DP-100 (Halford)	12 Mins	35 Mins	1 Hr	1 Hr 20 Mins
DP-102 (120 Spur Rd)	30 Mins	45 Mins	1 Hr	1 Hr 20 Mins
DP-105 (63 Rd and 210)	25 Mins	40 Mins	1 Hr	1 Hr 20 Mins
H-30 (Station 54)	25 Mins	30 Mins	50 Mins	1 Hr 10 Mins
H-67 (Parking Lot)	20 Mins	30 Mins	55 Mins	1 Hr 10 Mins

Study your map. Know where you are working. Know where your medical resources are located today. Situational awareness is your job.

Please provide additional relevant drive times information to SOF2s at ICP in order to populate this table more thoroughly. Help us help you in your time of need.

MEDICAL PLAN (ICS 206 WF)

1. Incident/Project Name				2. Operational Period			
Bolt Creek				Date/Time: 10/17/2022-10/18/2022			
3. Ambulance Services							
Name	Complete Address	Phone	Advanced Life Support (ALS)				
			YES	NO			
Sky Valley Fire #54	42013 State HWY 2-Gold Bar	911	X				
Sultan Fire #51	32905 Cascade View Dr	911		X			
Skykomish FD #50	105 E Old Cascade HWY	911		X			
4. Air Ambulance Services							
Name	Phone	Type of Aircraft & Capability					
Airlift Northwest	911 (800-426-2430)	Rotor					
Life Flight	911 (800-232-0911)	Rotor					
5. Hospitals							
Name Complete Address	Degrees Decimal Minutes	Travel Time From ICP Air	Travel Time From ICP Ground	Phone	Helipad		Level of Care Facility
	Lat: N/A Long: N/A	N/A	5 MIN	425-877-9371	Yes	No	Level 4
Evergreen Health Monroe 14701 179 th Ave SE Monroe, WA						X	
Providence Medical Center 1321 Colby Ave Everett, WA	Lat: 47° 59' 58.5" N Long: 122° 12' 21.5" W	10 MIN	25 MIN	425-404-5601	X		Level 2
Harborview Medical 325 9 th Ave Seattle, WA	Lat: 47° 36' 10.8" N Long: 122° 19' 29.6" W	15 MIN	60 MIN	206-744-3000	X		Level 1 Trauma Burn Center
DIVISIONS							
ICP	EMS Responders:		Zebron Watts MEDL C 541 270-4131 Lisa Poncelet MEDL (t) C 206 276-5509				
DIV A	EMS Responders & Capabilities:		Medic-Joel Bower				
	Medical Emergency Channel:		Command				
	Air / Ground		15 Minutes / 65 Minutes				
	Approved Heli Spot:		Skykomish Airport				
	Lat:		47° 42' 38" N				
Long:		121° 20' 25" W					
DIV P	EMS Responders & Capabilities:		AMBO 2-Trevor Stanley				
	Medical Emergency Channel:		Command				
	Air / Ground		15 Minutes / 55 Minutes				
	Approved Heli Spots:		NONE IN THIS DIVISION				
DIV S	EMS Responders & Capabilities:		Medic-Danielle Stumpf, Medic- Sandra Zelepuzza / EMTF-Spencer Wilson				
	Medical Emergency Channel:		Command				
	Air / Ground		15 Minutes / 50 Minutes				
	Approved Heli Spot:		H-67 (Parking Lot)		H-30 (Station 54)		
	Lat:		47° 49' 07" N		47° 50' 31" N		
	Long:		121° 33' 13" W		121° 40' 06" W		
DIV Z	NOT STAFFED WITH MEDICAL PERSONNEL						
STRUCTURE	NOT STAFFED WITH MEDICAL PERSONNEL						
NIGHT SHIFT	EMS Responders & Capabilities:						
	Medical Emergency Channel:		Command				
	Approved Heli Spots		Skykomish Airport	H-67 (Parking Lot)		H-30 (Station 54)	
	Lat:		47° 42' 38" N	47° 49' 07" N		47° 50' 31" N	
	Long:		121° 20' 25" W	121° 33' 13" W		121° 40' 06" W	
Prepared by (Medical Unit Leader)			Date:		Reviewed By (Safety Officer)		Date:
Lisa Poncelet MEDL (t) 			10/17/22		Ken Foss SOFR 		

MEDICAL PLAN (ICS 206 WF)

Controlled Unclassified Information//Basic

Medical Incident Report					
FOR A NON-EMERGENCY INCIDENT, WORK THROUGH CHAIN OF COMMAND TO REPORT AND TRANSPORT INJURED PERSONNEL AS NECESSARY. FOR A MEDICAL EMERGENCY: IDENTIFY ON SCENE INCIDENT COMMANDER BY NAME AND POSITION AND ANNOUNCE "MEDICAL EMERGENCY" TO INITIATE RESPONSE FROM IMT COMMUNICATIONS/DISPATCH.					
Use the following items to communicate situation to communications/dispatch.					
1. CONTACT COMMUNICATIONS / DISPATCH (Verify correct frequency prior to starting report) <i>Ex: "Communications, Div. Alpha. Stand-by for Emergency Traffic."</i>					
2. INCIDENT STATUS: Provide incident summary (including number of patients) and command structure. <i>Ex: "Communications, I have a Red priority patient, unconscious, struck by a falling tree. Requesting air ambulance to Forest Road 1 at (Lat./Long.) This will be the Trout Meadow Medical, IC is TFLD Jones. EMT Smith is providing medical care."</i>					
Severity of Emergency / Transport Priority	<input type="checkbox"/> RED / PRIORITY 1 Life or limb threatening injury or illness. Evacuation need is IMMEDIATE <i>Ex: Unconscious, difficulty breathing, bleeding severely. 2^o – 3^o burns more than 4 palm sizes, heat stroke, disoriented.</i> <input type="checkbox"/> YELLOW / PRIORITY 2 Serious Injury or illness. Evacuation may be DELAYED if necessary. <i>Ex: Significant trauma, unable to walk, 2^o – 3^o burns not more than 1-3 palm sizes.</i> <input type="checkbox"/> GREEN / PRIORITY 3 Minor Injury or illness. Non-Emergency transport <i>Ex: Sprains, strains, minor heat-related illness.</i>				
Nature of Injury or Illness & Mechanism of Injury			<i>Brief Summary of Injury or Illness (Ex: Unconscious, Struck by Falling Tree)</i>		
Transport Request	<i>Air Ambulance / Short Haul/Hoist Ground Ambulance / Other</i>				
Patient Location	<i>Descriptive Location & Lat. / Long. (WGS84)</i>				
Incident Name	<i>Geographic Name + "Medical" (Ex: Trout Meadow Medical)</i>				
On-Scene Incident Commander	<i>Name of on-scene IC of Incident within an Incident (Ex: TFLD Jones)</i>				
Patient Care	<i>Name of Care Provider (Ex: EMT Smith)</i>				
3. INITIAL PATIENT ASSESSMENT: Complete this section for each patient as applicable (start with the most severe patient)					
Patient Assessment: See IRPG page 106					
Treatment:					
4. TRANSPORT PLAN: Evacuation Location (if different): (Descriptive Location (drop point, intersection, etc.) or Lat. / Long.) Patient's ETA to Evacuation Location:					
Helispot / Extraction Site Size and Hazards:					
5. ADDITIONAL RESOURCES / EQUIPMENT NEEDS: <i>Example: Paramedic/EMT, Crews, Immobilization Devices, AED, Oxygen, Trauma Bag, IV/Fluid(s), Splints, Rope rescue, Wheeled litter, HAZMAT, Extrication</i>					
6. COMMUNICATIONS: Identify State Air/Ground EMS Frequencies and Hospital Contacts as applicable					
Function	Channel Name/Number	Receive (RX)	Tone/NAC *	Transmit (TX)	Tone/NAC *
COMMAND					
AIR-TO-GRND					
TACTICAL					
7. CONTINGENCY: Considerations: If primary options fail, what actions can be implemented in conjunction with primary evacuation method? Be thinking ahead.					
8. ADDITIONAL INFORMATION: Updates/Changes, etc.					
REMEMBER: Confirm ETA's of resources ordered. Act according to your level of training. Be Alert. Keep Calm. Think Clearly. Act Decisively.					