

# INCIDENT ACTION PLAN

## BOLT CREEK

WA-NWS-150  
PN P14322(1522)

Thursday



### OPERATIONAL PERIOD

10/20/2022 0700



to

10/21/2022 0700




FMAG 221-HPS

## INCIDENT OBJECTIVES (ICS 202)

1. Incident Name:	2. Operational Period: DAY/NIGHT SHIFT	
BOLT CREEK	Date/Time From: 10/20/2022 0700 THU	Date/Time To: 10/21/2022 0700 FRI
3. Objective(s):		
<b>Management Objectives</b>		
<ul style="list-style-type: none"> <li>• Provide for firefighter and public safety using ongoing risk analysis and reasonable mitigation of identified hazards.</li> <li>• Minimize impacts to communities and infrastructure, and minimize acres burned on private lands along Highway 2 corridor.</li> <li>• Maintain and enhance relationships with cooperators, stakeholders, landowners, and communities.</li> <li>• Provide accurate and timely information to the public.</li> <li>• Protect tribal, cultural, aquatic, and wildlife resources and sensitive plant sites by coordinating with Resource Advisors.</li> <li>• Treat each other with dignity and respect and act professionally on the fire and in the community.</li> <li>• Manage costs commensurate with values at risk and update Agency Administrators daily.</li> </ul>		
<b>Control Objectives</b>		
<ul style="list-style-type: none"> <li>• Maintain the fire north of Highway 2 utilizing the existing suppression strategy to stop the fire spread to at-risk values.</li> <li>• To control fire, utilize complete suppression and point protection strategies in areas around structures and values.</li> <li>• Keep fire east of Index-Galena Road (FR63) and west of Beckler Creek Road (FR65).</li> <li>• Continue to monitor the fire in the wilderness, only taking action to maintain a fire within the identified east/west parameters.</li> </ul>		
4. Operational Period Command Emphasis:		
<ul style="list-style-type: none"> <li>• Provide a positive presence to the community and the public impacted by the fire.</li> <li>• As the safety of personnel is our highest priority, continually use a deliberate analysis of risk as you engage the fire.</li> </ul> <p>Communicating the risks and problems you identify and considering the actions you can take to improve or manage the issue is crucial.</p> <ul style="list-style-type: none"> <li>• Review your LCES in all areas of your work environment. Take 10 minutes as a crew to review your communications in the work area, identify escape routes that will lead you to safety if conditions change, and evaluate the safety zones to ensure they are adequate for you, your crew, and other resources.</li> <li>• Be aware of values at risk inside and adjacent to the fire perimeter. Engage and suppress fire when safe, and employ appropriate tactics for the situation.</li> </ul>		
General Situational Awareness:		
See attached Fire Weather.		
Expect increased traffic on Hwy 2. Use spotters and additional lookouts. Avoid placing personnel or equipment on the roadway unless necessary.		
5. Site Safety Plan Required?    Yes <input type="checkbox"/> No <input checked="" type="checkbox"/>		
Approved Site Safety Plan(s) Located		
6. Incident Action Plan (the items checked below are included in this Incident Action Plan):		
<input checked="" type="checkbox"/> ICS 202 <input checked="" type="checkbox"/> ICS 203 <input checked="" type="checkbox"/> ICS 204 <input checked="" type="checkbox"/> ICS 205 <input checked="" type="checkbox"/> ICS 205A <input checked="" type="checkbox"/> ICS 206	<input type="checkbox"/> ICS 207 <input type="checkbox"/> ICS 208 <input type="checkbox"/> ICS 220 <input checked="" type="checkbox"/> Map/Chart <input checked="" type="checkbox"/> Weather Forecast/Tides/Currents	Other Attachments: <input checked="" type="checkbox"/> SAFETY <input checked="" type="checkbox"/> INFORMATION MESSAGE <input checked="" type="checkbox"/> ICS 214 - UNIT LOG <input checked="" type="checkbox"/> CODE OF CONDUCT
7. Prepared by: RYAN SCHARNHORST	Position/Title: PSC3	Signature: 
8. Approved by Incident Commander:	Name: LEONARD JOHNSON	Signature: 
ICS 202	IAP Page	Date/Time: 10/19/2022 1930

FINAL

## ORGANIZATION ASSIGNMENT LIST (ICS 203)

<b>1. Incident Name:</b>		<b>2. Operational Period: DAY/NIGHT SHIFT</b>	
BOLT CREEK		Date/Time From: 10/20/2022 0700	THU
		Date/Time To: 10/21/2022 0700	FRI
<b>3. Incident Commander(s) and Command Staff:</b>		BASE CAMP MGR	
IC/UC	LEONARD JOHNSON 360-581-9672	EQUIPMENT	CAMERON ESKEBERG
DEPUTY IC	WALTER ESCOBAR 509-398-1222	MEDICAL UNIT	ZEBRON WATTS 541-270-4131
INFORMATION OFFICER	DONALD FERGUSON 360-259-5006 JOSIE WILLIAMS (V) 425-647-1872	CAMP SECURITY	LISA PONCELET 206-276-5509 (T) JAMES GREEN 360-519-9932 (DAY) CHAD RIGGIN (NIGHT)
LIAISON OFFICER	TIM MCKERN (V) 360-463-2767 DAN SMITH (V) 360-340-4386 (T)	<b>7. Operations Section:</b>	
SAFETY OFFICER	KEN FOSS 253-318-2678	OPS SECTION CHIEF	RYAN NICHOLLS 509-430-1606
		PLANNING OPS	WES LONG 360-281-9585
<b>4. Agency/Organization Representative(s):</b>			
Agency/Organization	Name	DIVISION/GROUP	A / P
DNR- NW REGION ADMIN	JAY S GUTHRIE KEVIN KILLIGAN	DIVISION/GROUP	S
DNR - NW REGION REP	SHANNON CLARK	DIVISION/GROUP	Z
USFS MSF / AA	JOE NEAL BRYAN MCNEIL (ACT)	DIVISION/GROUP	NIGHT
MT. BAKER-SNOQUALMIE NF	CINDY SANDENO (DEP.)	DIVISION/GROUP	65 ROAD CLOSURE
WA STATE PATROL	LT. DEION GLOVER	<b>7b. Air Operations Branch:</b>	
BNSF	RYAN KUBO	AIR OPS BRANCH DIRECTOR	
SNOHOMISH CO DEM	JARROD DIBBLE	AIR ATTACK SUPERVISOR	
KING CO DEM	ALYSHA KAPLAN	AIR SUPPORT SUPERVISOR	
SNOHOMISH CO SHERIFF	LT. MIKE MARTIN	<b>8. Finance/Administration Section:</b>	
KING CO SHERIFF	CAPT. PETER HORVATH	CHIEF	PAULA JAMES 808-298-1386
SKY VALLEY FD #26	CHIEF ERIC ANDREWS	PTRC	JANET MCINTOSH
SKYKOMISH FD #50	CHIEF JAMES KNISLEY	TIME UNIT	JEANNE CHRISTENSEN
USFS LEAD READ	MATT KENNEY	PROCUREMENT UNIT	ROBERT THOMPSON (V)
<b>5. Planning Section:</b>		PHONE NUMBERS ARE NOT PUBLISHED FOR THE PUBLIC	*****PLEASE DO NOT GIVE ANY OF THESE NUMBER OUT TO THE PUBLIC
CHIEF	RYAN SCHARNHORST 509-432-1016 JENNIFER NORTON (T)		
SITUATION UNIT	DAVID WINTER 509-301-2631		
INCIDENT METEOROLOGIST	DEREK WILLIAMS 208-252-2291		
DEMOBILIZATION UNIT			
FIRE BEHAVIOR ANALYST	STEVE ZIEL 541-890-6862		
GIS SPECIALIST	RACHEL ARMSTRONG (V)		
<b>6. Logistics Section:</b>			
CHIEF	CINDY PRESTON 509-607-9724		
DEPUTY	JOSH AMBROSE 360-310-0401		
COMMUNICATIONS UNIT	PAUL CARLYLE 509-438-9702		
<b>9. Prepared By:</b>		<b>Position/Title:</b>	<b>Signature:</b>
Name: RYAN SCHARNHORST		PSC3	
ICS 203	IAP Page	Date/Time: 10/18/2022 2206	



# INCIDENT Weather Forecast



**FORECAST NO:** 33  
**PREDICTION FOR:** 0700 - 0700  
**SHIFT DATE:** Thursday, October 20, 2022  
**FORECAST ISSUED:** 1700 PDT Oct 19, 2022

**NAME OF FIRE:** Bolt Creek  
**UNIT:** WA-NDC  
**SIGNED:** *Lisa Kriederman*  
**Incident Meteorologist**

**WEATHER DISCUSSION:** A weak front today will begin the long-awaited weather pattern change... increasing cloud cover and humidity, cooling temperatures and bringing a few sprinkles possibly. Winds will begin light under a weak inversion, then increase in the afternoon as the front pushes through. Friday will bring widespread wetting rains and cold temperatures, breezy northwest winds and snow levels down to 4000 feet by Friday night. Passes should remain wet as road temperatures have been so warm lately.

**WEATHER FORECAST:**

**WEATHER:** Mostly cloudy. Areas of smoke in the morning, clearing out after 1100. Isolated light rain showers in the afternoon.

**MAX TEMPERATURES:** 56 to 60 ridges and upper slopes; 60 to 65 lower slopes and valleys.

**MIN HUMIDITY:** 55 to 65 percent.

**20 FT WINDS:**

**RIDGETOP** - West 3 to 6 mph until 1100, becoming northwest 5 to 8 mph with gusts to 13 mph in the afternoon.

**SLOPE/VALLEY** - Light and variable until 1200, then becoming northwest 4 to 6 mph, gusts to 12 mph.

**HAINES INDEX:** 3 (Very Low)

**INVERSION:** Weak, top around 2000ft, breaking by 1100.

**OUTLOOK FOR TONIGHT:** Mostly cloudy. A few rain showers possible in the evening. Low temperatures in the mid 40s to low 50s. Max humidity 80 to 90 percent. Along the ridges...west winds 4 to 7 mph, gusts up to 13 mph over the ridges. Lower slopes and valleys...west 2 to 5 mph.

**OUTLOOK FOR FRIDAY:**

**WEATHER:** Cloudy. Rain after 0900. 1.0-1.5 inches of accumulation expected (through Saturday morning).

**MAX TEMPERATURES:** 40 to 48 ridges and upper slopes; 50 to 54 lower slopes and valleys.

**MIN HUMIDITY:** 65 to 75 percent.

**20 FT WINDS:**

**RIDGETOP** - West 5 to 8 mph with gusts to 18 mph.

**SLOPE/VALLEY** - Northwest 3 to 6 mph until 0900, then increasing to 6 to 9 mph with gusts to 16 mph.

**HAINES INDEX:** 2 (Very Low)

**INVERSION:** Little to none.

**EXTRA INFORMATION:**

Sunrise: 0732

Sunset: 1808



## Fire Behavior Forecast # 11

<b>Name of Incident:</b> Bolt Creek	<b>Administrative Unit:</b> WA-NWS
<b>Date &amp; Time Issued:</b> October 19, 2022 @ 1900	<b>Operational Period:</b> DAY/NIGHT 10/20-21/2022 (0700-0700)
<b>FBAN:</b> Steve Ziel	<b>Signed:</b> /z/ <i>[Signature]</i>

**Assumptions:** *Autumn weather abruptly transitions to cloudy, cool, with a chance of isolated rain. Today's forecast includes diminished fire behavior potential – but, it is still “fire season in the middle of October” with sources of heat across the fire. We continue to have all the ingredients for active fire behavior with moderate RH, abundant dry fuels, and numerous heat sources across a large area. Consider all fuels to be dry until they get wet. Leaves are falling adding to fine dead fuel loading. The combination of wind, temperature, humidity, and a heat source may result in areas of limited surface spread. Southerly aspects are remaining sunny, while north aspects are gaining shadow time. Monitor the humidity, and pre-frontal wind effect on fuels that are smoldering and creeping.*

### Weather Summary

\*See attached Fire Weather Forecast

### Fire Behavior Summary

**Fuels in the fire area** are primarily composed of *Timber Litter*, and *Timber with Understory*. Primary tree species include mixed sizes of Douglas Fir, Western Hemlock, with scattered cedar. Local timber litter is compact to fluffy with green moss. Shrub and understory species include mixed hardwoods, and dog-hair conifer thickets. Large snags and heavy fuel concentrations are common throughout all areas. Live woody fuels are marginally contributing to fire rate of spread and fire intensity. Fuel conditions change by elevation, and aspect. Low crown base height (ladder fuels) and thick moss are present in most of the timbered areas. *Lots of hardwood leaf litter.*

**Today's potential fire behavior** will likely include limited transition from smoldering/creeping to pockets of surface fire spread with flare ups. Primary spread mechanism includes flames creeping into unburned fuels that result in moving fire and flare ups. Wind/slope alignment on may contribute to flare ups with isolated torching. Moderate re-burn/re-ignite potential where fuels have lightly burned and in patchy burn areas. Moss may contribute to torching and snags may fall causing flare-ups.

\* Fine fuel moisture= 6%-9%, 1000hr. moisture=12%, Woody fuels 190%, Probability of Ignition-40%-60%

Fuel Type	Rate of Spread	Flame Length	Spotting Distance	
...If your work area includes -	(CH/HR = FPM)	Feet		
Timber Litter (TL5) Heavy	<3-5	<2	0.1 mi.	
Timber w/ Understory (TU5) Heavy	<6-8	<6-8	0.1 mi.	
Timber w/ Understory (TU2) Moderate	<7-9	<3-4	0.1 mi.	

### Specific Assignments:

- Div. A** – Monitor fire activity on lower slopes for flare-ups. Expect minimal activity in recently burned areas north of Skykomish for due to river flow winds. Monitor Beckler River corridor, and SW/SW Sec. 6 below 6510 for flare ups and rekindle in ratty burn areas.
- Div. S** – Monitor flanking/backing on Heybrook Ridge, and 6022 Rd. (Sec. 26), and continued activity in lower Barclay Creek (Sec. 35).
- Div. P** – Monitor Hwy 2 corridor for flare ups. Potential areas of re-burn. Expect rolling materials on steep slopes in the tunnel area.
- Div. Z** – Expect continued flare ups, and areas of unburned fuels to consolidate in the Eagle Rock, and upper Eagle Creek area.

**Air Operations:** Moderate inversion breaking by mid-morning. Expect hazy/smoky conditions due to local fires.

### Safety

Changing conditions require re-evaluation of actions. If the conditions are changing ask “how fast, how much, when, where”. Consider the effects of change on your planned action – may require adjusting your actions to mitigate changing conditions. Verify forecast values....consider “will our situation get better or worse, will it get worse before it gets better?” \*ALWAYS EXPECT CHANGE – EXCEPT FROM A VENDING MACHINE.

**Fire behavior hazards include ....threats to your feet, hands, airways, knees, shins, and eyes that continue to be challenged by smoke, ash, dirt, sharp things, pokey stuff, steam.....be kind to your money making parts, a few days of fire season left to enjoy!!**

\*Today's Fire Behavior Forecast contains 647 words written for your situational awareness.



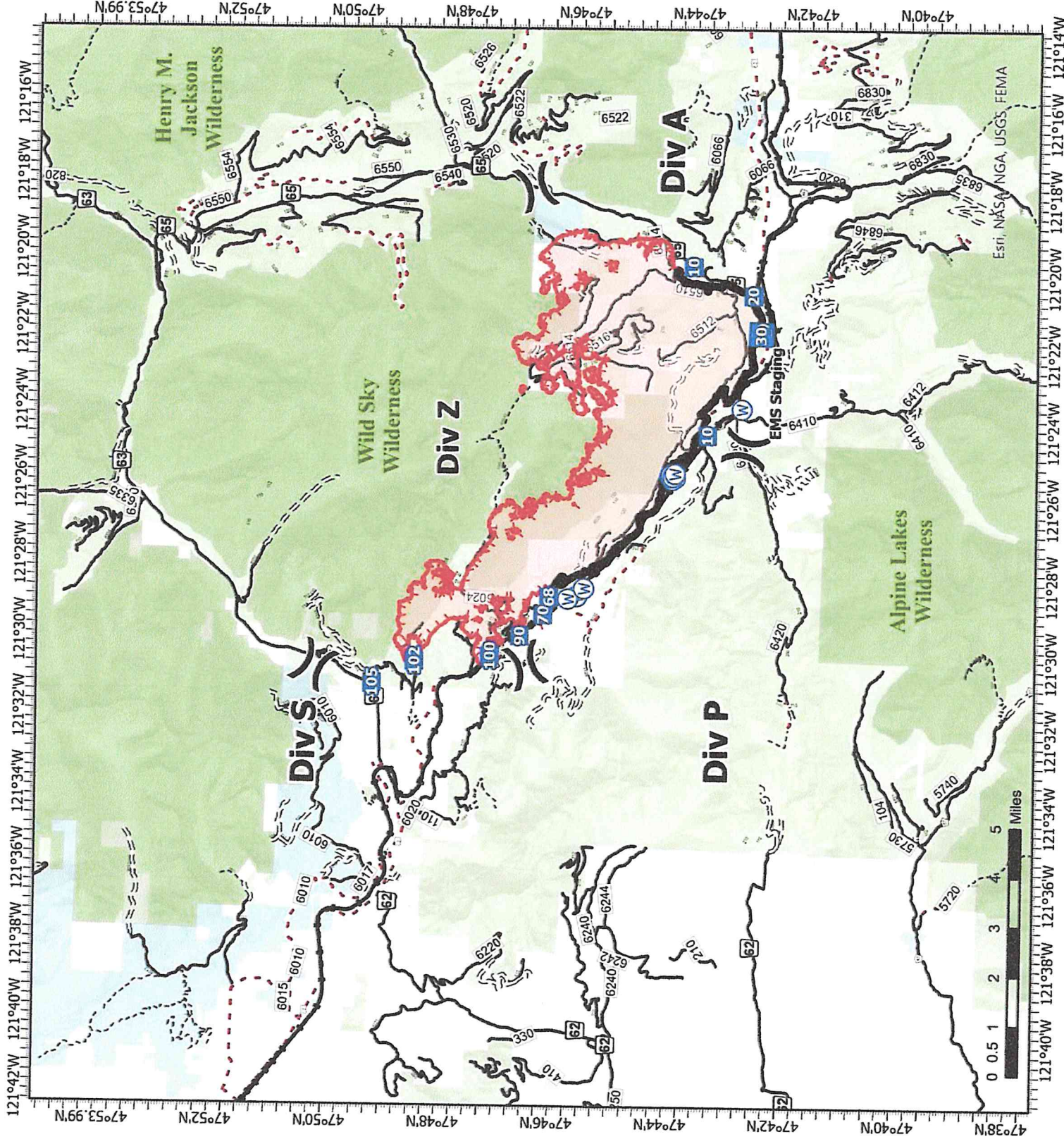
# IAP

## Bolt Creek

WA-NWS-000150

10/20/2022

14,766 acres at 10/18/2022 @1935



- X Division Break
- Medical
- Drop Point
- Water Source
- Contained
- Uncontained
- Bureau of Land Management (BLM)
- State
- US Forest Service (USFS)
- Private
- Undetermined
- Railroads
- Open Roads
- Closed Roads
- Decommissioned Roads
- Decommissioned Roads
- Trail
- Wilderness



Map updated:  
10/19/2022 1821



**Division/Group Assignment List (ICS 204 WF)**  
**Controlled Unclassified Information//Basic**

<b>1. Incident Name:</b>				<b>3.</b>		
BOLT CREEK				<b>Branch:</b>	<b>Division/Group</b>	
<b>2. Operational Period: DAY/NIGHT SHIFT</b>						
Date/Time From: 10/20/2022 0700 THU		Date/Time To: 10/21/2022 0700 FRI		A / P		
<b>4. Operations Personnel</b>						
<b>OPERATIONS CHIEF</b>		RYAN NICHOLLS 509-430-1606		<b>PLANNING OPS</b>		WES LONG 360-281-9585
<b>FIELD OPS</b>				<b>DIVISION/GROUP SUPERVISOR</b>		KENNETH JOHNSON 509-496-5452
<b>5. Resources Assigned this Period</b>						
Strike Team / Task Force / Resource Designator		LWD	Leader	Number Persons	Drop Off PT./Time	Pick Up PT./Time
O-224 STEN BRIAN WESEMANN 360-749-6128		10/22		1	ICP/0700	ICP/0700
***E-130 ENG6 LATE SUMMERS WILDFIRE***		10/22	JENSEN BOVEE	3	ICP/0700	ICP/1900
***E-131 ENG3 MEADOW WILDFIRE***		10/29	DAMIEN RAMON	3	ICP/0700	ICP/0700
***E-133 ENG5 RAINIER WILDFIRE***		10/23	SPENCER SHAW	3	ICP/0700	ICP/1900
***E-134 ENG NORTHRIDGE WILDFIRE***		10/24	BRITTANY NORDHAGEN	3	ICP/0700	ICP/1900
***E-135 ENG RAINIER WILDFIRE***		10/20	MICHAEL SUTTON	3	ICP/0700	ICP/1900
O-251 STEN CORY BERGSTROM (T)		10/26		1	ICP/0700	ICP/0700
E-198 ENG6 METHOW RIVER WILD FIRE		10/26	IVAN MUNOZ	3	ICP/0700	ICP/0700
E-203 ENG5 AMERICAN LAND SERVICE LLC		10/27	CHRISTIAN MARTINSON	3	ICP/0700	ICP/0700
E-205 ENG6 SOUTHCOUNTY - BR11		10/27	ANDREW LUNNY	2	ICP/0700	ICP/0700
E-206 ENG6 WOODPECKER CO		10/27	MICHELLE HERRIN	3	ICP/0700	ICP/0700
E-207 ENG3 RATTLESNAKE RIDGE		10/27	FABIAN BREMERMAN	3	ICP/0700	ICP/0700
O-240 SOFR RYAN GRANT 509-254-1672		10/27		1	ICP/0700	ICP/1900
O-255 EMPF JOEL BOWER 360-461-7390		10/27		1	ICP/0700	ICP/1900
E-185 AMB2 MEDIC 5-1 - CENTRAL KITSAP		10/22	TREVOR STANLEY		ICP/0700	ICP/0700
<b>6. Control Operations/Work Assignments:</b>						
<b>8. Division/Group Communication Summary</b>						
Function	Channel	RX Frequency N/W	RX Tone/NAC	TX Frequency N/W	TX Tone/NAC	Mode
TACTICAL	1	151.3100	118.8	151.3100	118.8	A
COMMAND	7	159.4125	118.8	151.4450	118.8	A
COMMAND	8	159.3750	118.8	151.3250	118.8	A
AIR TO GROUND	12	164.9500	0.0	164.9500	0.0	A
AIR TO GROUND	13	168.8125		168.8125		A
AIR GUARD	16	168.6250	000.0	168.6250	110.9	A
<b>9. Prepared By (Resource Unit Leader)</b>			<b>Approved By (Planning Section Chief)</b>		<b>Date</b>	<b>Time</b>
			RYAN SCHARNHORST		10/18/2022	2206

**Division/Group Assignment List (ICS 204 WF)**  
 Controlled Unclassified Information//Basic

<b>1. Incident Name:</b>				<b>3.</b>		
BOLT CREEK				<b>Branch:</b>	<b>Division/Group</b>	
<b>2. Operational Period: DAY/NIGHT SHIFT</b>						
Date/Time From: 10/20/2022 0700 THU		Date/Time To: 10/21/2022 0700 FRI		A / P		
<b>4. Operations Personnel</b>						
<b>OPERATIONS CHIEF</b>		RYAN NICHOLLS 509-430-1606		<b>PLANNING OPS</b>		WES LONG 360-281-9585
<b>FIELD OPS</b>				<b>DIVISION/GROUP SUPERVISOR</b>		KENNETH JOHNSON 509-496-5452
<b>6. Control Operations/Work Assignments:</b>						
<p><b>Task:</b> Hold fire from crossing Hwy 2, reinforce primary control lines, and maintain patrol status within the division.  <b>Purpose:</b> Confine the fire to its current footprint. Limit the impacts of fire spread around infrastructure, structures, timber, and other identified values at risk.  <b>End State:</b> Fire is confined to the existing footprint and defensive preparations are in place around all infrastructure and structures.</p>						
<b>7. Special Instructions:</b>						
<p><b><u>Special Notice: STEN and engines with asterisks (***) next to their resource number are part of the Strike Team that will be used for IA.</u></b></p> <ul style="list-style-type: none"> <li>Identify and make appropriate notifications for all hazards along the BPA high-tension power lines.</li> <li>Utilize Field Maps and Avenza to input suppression repair needs.</li> <li>Provide WX observations to the IMET at 208-252-2291.</li> <li>Notify WA DOT of trees or debris falling on the highway.</li> <li>When addressing road hazards, utilize a vehicle equipped with emergency warning lights after blocking the roadway.</li> <li>Backhaul unused equipment to base camp. Verify inventory is accurate, then submit to LOGS.</li> <li>Ambulance staged at Money Creek Campground.</li> </ul>						
<b>8. Division/Group Communication Summary</b>						
Function	Channel	RX Frequency N/W	RX Tone/NAC	TX Frequency N/W	TX Tone/NAC	Mode
TACTICAL	1	151.3100	118.8	151.3100	118.8	A
COMMAND	7	159.4125	118.8	151.4450	118.8	A
COMMAND	8	159.3750	118.8	151.3250	118.8	A
AIR TO GROUND	12	164.9500	0.0	164.9500	0.0	A
AIR TO GROUND	13	168.8125		168.8125		A
AIR GUARD	16	168.6250	000.0	168.6250	110.9	A
<b>9. Prepared By (Resource Unit Leader)</b>			<b>Approved By (Planning Section Chief)</b>		<b>Date</b>	<b>Time</b>
			RYAN SCHARNHORST		10/18/2022	2206

**Division/Group Assignment List (ICS 204 WF)**  
Controlled Unclassified Information//Basic

<b>1. Incident Name:</b>		<b>3.</b>	
BOLT CREEK		<b>Branch:</b>	<b>Division/Group</b>
<b>2. Operational Period:</b> DAY/NIGHT SHIFT			<b>S</b>
Date/Time From: 10/20/2022 0700	THU	Date/Time To: 10/21/2022 0700	FRI

<b>4. Operations Personnel</b>			
<b>OPERATIONS CHIEF</b>	RYAN NICHOLLS 509-430-1606	<b>PLANNING OPS</b>	WES LONG 360-281-9585
<b>FIELD OPS</b>		<b>DIVISION/GROUP SUPERVISOR</b>	NICHOLAS LOEWEN 541-620-4318

<b>5. Resources Assigned this Period</b>						
Strike Team / Task Force / Resource Designator	LWD	Leader	Number Persons	Drop Off PT./Time	Pick Up PT./Time	
C-17 CR21 MT BAKER IA	10/21	ERIK USHER	20	ICP/0700	ICP/0700	
C-20 CR21 SES AHTANUM	10/26	JEFFREY DELAROSA	16	ICP/0700	ICP/1900	
O-272 FELB KELLY SENSECQUA	10/31		1	ICP/0700	ICP/1900	
O-194 FMOD MOUNTAIN WEST WILD FIRE	10/30	CHARLIE DOW	2	ICP/0700	ICP/0700	
O-244 FMOD LL MEADOW WILDFIRE INC.	10/26	RICK WARD	2	ICP/0700	ICP/0700	
O-275 FMOD NEWMAN, BEN	10/30	AUSTIN ROSS	2	ICP/0700	ICP/0700	
O-242 STEN ANDREW KLUNDER 605-484-5611	10/27		1	ICP/0700	ICP/1900	
E-175 ENG5 E8142 - WA-SPS	10/22	REECE JOHNSON	4	ICP/0700	ICP/0700	
E-180 ENG5 ENGINE 1205 - WAOLS	10/21	REECE BLATTNER	3	ICP/0700	ICP/0700	
E-194 ENG5 EARLY WINTERS	10/26	CHRIS SURFACE	3	ICP/0700	ICP/1900	
E-196 ENG5 C2C WILDFIRE INC.	10/26	BRYCE HOLBROOK	3	ICP/0700	ICP/1900	
E-199 ENG6 BLACKSTONE FORESTRY, LLC	10/26	RILEY NOONAN	3	ICP/0700	ICP/1900	
E-200 ENG6 WILD FIRE SERVICES INC	10/26	JASON SARE	3	ICP/0700	ICS/1900	
E-202 ENG6 SNOHOMISH FD21	10/27	VIVEK PATEL	2	ICP/0700	ICP/1900	
O-257 EMPF DANIELLE STUMPF	10/27	253-881-8436	1	ICP/0700	ICP/0700	
O-259 EMTF SPENCER WILSON	10/28		1	ICP/0700	ICP/1900	
O-268 EMPF SANDRA ZELEPUZA	10/28	360-580-8833	1	ICP/0700	ICP/0700	

<b>8. Division/Group Communication Summary</b>						
Function	Channel	RX Frequency N/W	RX Tone/NAC	TX Frequency N/W	TX Tone/NAC	Mode
TACTICAL	2	151.3400	118.8	151.3400	118.8	A
COMMAND	8	159.3750	118.8	151.3250	118.8	A
COMMAND	7	159.4125	118.8	151.4450	118.8	A
AIR TO GROUND	12	164.9500	0.0	164.9500	0.0	A
AIR TO GROUND	13	168.8125		168.8125		A
AIR GUARD	16	168.6250	000.0	168.6250	110.9	A

<b>9. Prepared By (Resource Unit Leader)</b>	<b>Approved By (Planning Section Chief)</b>	<b>Date</b>	<b>Time</b>
	RYAN SCHARNHORST	10/18/2022	2206



**Division/Group Assignment List (ICS 204 WF)**  
Controlled Unclassified Information//Basic

1. Incident Name:		3.	
BOLT CREEK		Branch:	Division/Group
2. Operational Period: DAY/NIGHT SHIFT		S	
Date/Time From: 10/20/2022 0700 THU	Date/Time To: 10/21/2022 0700 FRI		
4. Operations Personnel			
OPERATIONS CHIEF	RYAN NICHOLLS 509-430-1606	PLANNING OPS	WES LONG 360-281-9585
FIELD OPS		DIVISION/GROUP SUPERVISOR	NICHOLAS LOEWEN 541-620-4318

6. Control Operations/Work Assignments:

**Task:** Hold fire from crossing 6022 Rd. and 120 spur, reinforce primary control lines, clear roadways to provide for safe travel, and maintain patrol status within the division.

**Purpose:** Confine the fire to its current footprint. Limit the impacts of fire spread around infrastructure, structures, timber, and other identified values at risk.

**End State:** Fire is confined to the existing control lines and defensive preparations are in place around all infrastructure, structures, and roads are cleared of debris reducing the hazards to firefighters and the public.

7. Special Instructions:

- Continued assessment of indirect line placement for potential future use as necessary.
- Provide WX observations to the IMET at 208-252-2291.
- Utilize Field Maps and Avenza to input suppression repair needs.
- Backhaul unused equipment to base camp. Verify inventory is accurate, then submit to LOGS.

8. Division/Group Communication Summary						
Function	Channel	RX Frequency N/W	RX Tone/NAC	TX Frequency N/W	TX Tone/NAC	Mode
TACTICAL	2	151.3400	118.8	151.3400	118.8	A
COMMAND	8	159.3750	118.8	151.3250	118.8	A
COMMAND	7	159.4125	118.8	151.4450	118.8	A
AIR TO GROUND	12	164.9500	0.0	164.9500	0.0	A
AIR TO GROUND	13	168.8125		168.8125		A
AIR GUARD	16	168.6250	000.0	168.6250	110.9	A

9. Prepared By (Resource Unit Leader)		Approved By (Planning Section Chief)		Date	Time
		RYAN SCHARNHORST		10/18/2022	2206

**Division/Group Assignment List (ICS 204 WF)**  
Controlled Unclassified Information//Basic

<b>1. Incident Name:</b>			<b>3.</b>			
BOLT CREEK			<b>Branch:</b>		<b>Division/Group</b>	
<b>2. Operational Period:</b>			<b>DAY/NIGHT SHIFT</b>			
Date/Time From: 10/20/2022 0700 THU		Date/Time To: 10/21/2022 0700 FRI		NIGHT SHIFT		
<b>4. Operations Personnel</b>						
<b>OPERATIONS CHIEF</b>		RYAN NICHOLLS 509-430-1606		<b>PLANNING OPS</b>		WES LONG 360-281-9585
<b>DIVISION/GROUP SUPERVISOR</b>		BLAKE MANN				
<b>5. Resources Assigned this Period</b>						
Strike Team / Task Force / Resource Designator		LWD	Leader	Number Persons	Drop Off PT./Time	Pick Up PT./Time
E-181 ENG5 ENGINE-1101 WAOLS		10/21	BLAKE MANN	4	ICP/1900	ICP/0000
E-189 ENG6 SNOHOMISH FD26		10/22	NOLAN JON HEISEL	2	ICP/1900	ICP/0000
<b>6. Control Operations/Work Assignments:</b>						
<p><b>Task:</b> Hold fire from crossing Hwy 2, reinforce primary control lines, provide point protection for values at risk, and maintain patrol status within all divisions (except DIV Z).</p> <p><b>Purpose:</b> Confine the fire to its current footprint. Limit the impacts of fire spread around infrastructure, structures, timber, and other identified values at risk.</p> <p><b>End State:</b> Fire is confined to the existing footprint and defensive preparations are in place around all infrastructure and structures.</p>						
<b>7. Special Instructions:</b>						
<ul style="list-style-type: none"> <li>• COML receives all <b>IWI</b> notifications. Provide updates directly to the COML.</li> <li>• Provide night watch for helicopter ONW at Skykomish airport, and as needed, report to Communications at 360-259-7651.</li> <li>• WSP is patrolling the area. Call 911 to activate emergency response and THEN contact Communications.</li> <li>• Check in via Command to COMMS at 00:00 and 03:00 to confirm status.</li> <li>• Notify Planning Ops: Wes Long of any needs 360-281-9585</li> </ul>						
<b>8. Division/Group Communication Summary</b>						
Function	Channel	RX Frequency N/W	RX Tone/NAC	TX Frequency N/W	TX Tone/NAC	Mode
TACTICAL	1	151.3100	118.8	151.3100	118.8	A
COMMAND	7	159.4125	118.8	151.4450	118.8	A
COMMAND	8	159.3750	118.8	151.3250	118.8	A
AIR TO GROUND	12	164.9500	0.0	164.9500	0.0	A
AIR TO GROUND	13	168.8125		168.8125		A
AIR GUARD	16	168.6250	000.0	168.6250	110.9	A
<b>9. Prepared By (Resource Unit Leader)</b>			<b>Approved By (Planning Section Chief)</b>		<b>Date</b>	<b>Time</b>
			RYAN SCHARNHORST		10/18/2022	2206

**Division/Group Assignment List (ICS 204 WF)**  
**Controlled Unclassified Information//Basic**

<b>1. Incident Name:</b>			<b>3.</b>			
BOLT CREEK			<b>Branch:</b>		<b>Division/Group</b>	
<b>2. Operational Period:</b>			<b>DAY/NIGHT SHIFT</b>			
Date/Time From: 10/20/2022 0700 THU		Date/Time To: 10/21/2022 0700 FRI		65 ROAD CLOSURE		
<b>4. Operations Personnel</b>						
<b>OPERATIONS CHIEF</b>		RYAN NICHOLLS 509-430-1606		<b>PLANNING OPS</b>		WES LONG 360-281-9585
<b>DIVISION SUPERVISOR</b>		BRIAN MCNEIL 425-365-6067				
<b>5. Resources Assigned this Period</b>						
Strike Team / Task Force / Resource Designator		LWD	Leader	Number Persons	Drop Off PT./Time	Pick Up PT./Time
ROAD SECURITY (GUARD)		10/22	SARAH LARSEN	1	RD 65/0600	RD 65/2200
ROAD SECURITY (GUARD)		10/22	AVERY PAYNE	1	RD 65/0600	RD 65/2200
ROAD SECURITY (GUARD)		10/22	FRANK ROSCIGNO	1	RD 65/0600	RD 65/2200
<b>6. Control Operations/Work Assignments:</b>						
<ul style="list-style-type: none"> <li>USFS will provide security to the 65 Road closure.</li> <li>Assist fire resources working in the area with access around the road closure and direct public traffic past the road closure location.</li> </ul>						
<b>7. Special Instructions:</b>						
<ul style="list-style-type: none"> <li>If you need access when working in the 65 Road area, or if you have any traffic issues, contact the Forest Service's Guards on Command Channel 8 for assistance.</li> </ul>						
<b>8. Division/Group Communication Summary</b>						
Function	Channel	RX Frequency N/W	RX Tone/NAC	TX Frequency N/W	TX Tone/NAC	Mode
TACTICAL	1	151.3100	118.8	151.3100	118.8	A
COMMAND	8	159.3570	118.8	151.3250	118.8	A
<b>9. Prepared By (Resource Unit Leader)</b>			<b>Approved By (Planning Section Chief)</b>		<b>Date</b>	<b>Time</b>
			RYAN SCHARNHORST		10/18/2022	2206

# INCIDENT RADIO COMMUNICATIONS PLAN (ICS 205)

Controlled Unclassified Information//Basic

<b>1. Incident Name:</b>		<b>2. Date/Time Prepared:</b>		<b>3. Operational Period:</b>	
BOLT CREEK		Date: 10/18/2022	Time: 2206	Date/Time From: 10/20/2022 0700	Date/Time To: 10/21/2022 0700
				THU	FRI

4. Basic Radio Channel Use:										
Zone Group	Ch #	Function	Channel Name/Trunked Radio System Talkgroup	Assignment	RX Freq	RX Tone/NAC	TX Freq	TX Tone/NAC	Mode (A,D, or M)	Remarks
	1	TACTICAL	TAC 1	DIV A	151.3100	118.8	151.3100	118.8	A	
	2	TACTICAL	TAC 2	DIV S	151.3400	118.8	151.3400	118.8	A	
	3	TACTICAL	TAC 3	DIV P	151.2125	118.8	151.2125	118.8	A	
	4	TACTICAL	DNR COM	UNASSIGNED	151.4150	103.5	151.4150	103.5	A	IA USE ONLY
	5	TACTICAL	REDNET	STRUCTURE	153.8300	000.0	153.8300	000.0	A	
	6	TACTICAL	FS FTAC	IA / FIRING GROUP	168.5625	000.0	168.5625	000.0	A	IA/FIRING GROUP
	7	COMMAND	CMD 7	ALL DIVS	159.4125	118.8	151.4450	118.8	A	LOCATED NORTH OF INDEX LINKED TO CMD 8
	8	COMMAND	CMD 8	ALL DIVS	159.3750	118.8	151.3250	118.8	A	LOCATED ON SOBIESKI LINKED TO CMD 7
	9	COMMAND	SNOHOMIS	FOREST NET	159.4350	141.3	151.1900	141.3	A	DISPATCH CALL SIGN "NW DISPATCH" IA USE ONLY
	10	COMMAND	SULTAN	FOREST NET	159.2475	141.3	151.1825	141.3	A	DISPATCH CALL SIGN "NW DISPATCH" IA USE ONLY
	11	COMMAND	SOBIESKI	FOREST NET	169.5750	146.2	164.9625	156.7	A	DISPATCH CALL SIGN "PUGET SOUND" IA USE ONLY
	12	AIR TO GROUND	A/G PRIMARY	ALL DIVS	164.9500	0.0	164.9500	0.0	A	PRIMARY A/G
	13	AIR TO GROUND	A/G2	ALL DIVS	168.8125		168.8125		A	SECONDARY A/G
	14	AIR TO GROUND	A/G 41	UNASSIGNED	167.4750	000.0	167.4750	000.0	A	
	15	AIR TO GROUND	VMED 29	MEDEVAC	155.3475	156.7	155.3475	156.7	A	MEDEVAC
	16	AIR GUARD	AIRGUARD	EMERGENCY USE	168.6250	000.0	168.6250	110.9	A	EMERGENCY USE

<b>5. Special Instructions:</b>	

<b>6. Prepared By</b>	Signature:
(Communications Unit Leader)	Name: PAUL CARLYLE
ICS 205	Date/Time: 10/18/2022 2206

**Lookouts**  
**Communications**  
**Escape Routes**  
**Safety Zones**

**Bolt Creek Incident**  
**Operation Period: 10/20/22 Day/ Night Shift**

---

**SAFETY MESSAGE**

**FOCUS YOUR ATTENTION ON**

- **Driving safely:** Getting to and from the work assignment may be one of the more hazardous activities on this incident.
- **Identifying Hazards:** Size up the work area to identify all potential and existing hazards associated with the environment and assignment.
- **Mitigate Hazards:** Remove hazards or avoid them. Utilize hazard control measures to reduce risk.
- **Use of PPE:** Please ensure the appropriate PPE is in use to protect from the hazards found in your work area

**MAJOR HAZARDS AND RISKS**

STEEP TERRAIN CHIPPER OPS FATIGUE	ROLLING MATERIAL COMPLACENCY DEHYDRATION	TRAFFIC SNAGS STUMP HOLES
---	--	---------------------------------

*Be sure all elements of your safety plan are in place prior to engagement*

**Situational Awareness**

Help maintain your Situational Awareness by doing the following:

- Constantly observing your environment.
- Interpret and process information received.
- Sharing information by discussing the situation.

**Risk Management**

- Keep risks commensurate with the benefit.
- Utilize the Risk Management Process found on page 1 of the IRPG.
- Recognize that no injury is worth the ground you are working.
- Everyone is entitled to a round trip ticket. Bring them home healthy.

**Safety Officer Ken Foss, SOFR**





# LOGISTICS MESSAGE

Bolt Creek

---



## ICP Hours

2200 – 0500 Quiet Hours

## Meals

**Breakfast 0600–0900**

**Lunches & ICE 0600-2000**

(Pick up at the Refer Trailer)

**Dinner 1800-2000**



## Showers

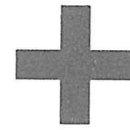
0530 – 1200 & 1500-2200



## Medical

0600-2100

(in tent, call number on tent if after hours)



## Supply

0600-2100

## Laundry-

**Last Day for Dropoff 10/19/22**

Drop off at Supply by 0830 hrs. Expect a 48 hr turn-around. Pick-up at Supply



## Hydrant use

City of Monroe:

Snohomish PUD:

City of Skykomish:

**Only use Hydrants with Meters attached.  
Operations must approve all other Hydrant use.**

## Bolt Creek Fire Information

*Fire Information Line 360-370-4170*

*Email: [2022.boltcreek@firenet.gov](mailto:2022.boltcreek@firenet.gov)*

*These are for public information AND to email photos & videos to us!  
Text your fire photos and short videos to 360-259-5006*

### Facebook Page

[Bolt Creek Fire Information | Facebook](#)

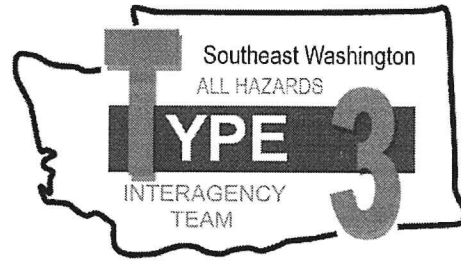
### Inciweb

<https://inciweb.nwcf.gov/incident/8417/>

*Did you lose or find something? The PIO booth in the corner of the Incident Command Post is the place for Lost and Found. Be prepared to describe what you are looking for. If you're turning something in, please give us time and location of what you found.*

*Need to mail something? Drop it by the PIO booth and we will drop it in a mailbox for you.*

# Code of Conduct Incident Personnel



Each individual on this incident is responsible for:

- ☞ Being *ready and able* to perform their assigned duties effectively.
- ☞ Conducting themselves in a manner that treats people with dignity, equality, courtesy, and respect.
- ☞ Abiding by agency ethics and conduct regulations.
- ☞ Reporting any harassment or other inappropriate behavior.

Each individual of this incident has the right to:

- ☞ Work in an environment characterized by safe work practices.
- ☞ Work in a fair and harassment free environment.
- ☞ Say "No" to unwelcome advances or requests for favors.
- ☞ File complaints or grievances through appropriate avenues.

There is zero tolerance for inappropriate behavior while assigned to the incident, including:

- ☞ Illegal drug use
- ☞ Alcohol use
- ☞ Unsafe work practices and activities
- ☞ Discrimination
- ☞ Sexual harassment
- ☞ Fighting, threatening, and abusive behaviors
- ☞ Using social media and electronic communication devices for personal business while engaged in fire assignment duties.
- ☞ Other violations of Fire Service, Washington DNR, and Federal agency standards of conduct.

Failure to adhere to the Code of Conduct could result in dismissal from the incident, with notification to your home unit.

The public expects our best efforts; they see us as professionals in what we say and do. Let's continue to show them we are!

<b>DNR/DOC Camp Crew Guidelines</b>	1. Incident Name	2. Date Prepared	3. Time Prepared
-------------------------------------	------------------	------------------	------------------

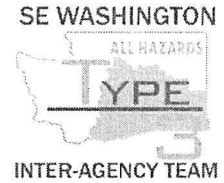
**ALL PERSONNEL WORKING AROUND OFFENDERS/DNR KITCHENS**

*This message is from the Department of Natural Resources and Department of Corrections.*

- ▶ No person shall be allowed to carry firearms in the area where offenders are working. It is acceptable to secure weapons in vehicles while entering into the working vicinity of offenders.
- ▶ Do not give or take anything from an offender. Offenders are identified by red ball caps or red hard hats.
- ▶ Do NOT take photos or interview offenders without approval from the DNR Inmate Liaison.
- ▶ Do not do any favors for offenders. (Examples: passing on a message, giving tobacco, asking for change, mailing a letter, using a phone. The most innocent act/favor can have consequences that could affect an offender for years.)
- ▶ Report any suspicious act to the Supervisor, DOC Staff or Inmate Liaison.
- ▶ Offenders are not allowed to use tobacco products. Do not use tobacco products in or around kitchen area.
- ▶ Offenders on DNR Crews have committed various crimes. They ARE considered minimum level custody.
- ▶ Treat Offenders with respect, but don't get personal. Practices the correctional distance...don't get personal. Offenders generally feel good with being part of the fire suppression effort; treat them with the same respect and dignity as other fire fighters but, DON'T GET PERSONAL.
- ▶ Offenders are trained in their job assignments and their work ethics. They are held accountable for their job performance and their behavior.
- ▶ Acknowledge crews for a job well done; offenders do good work and appreciate the recognition.
- ▶ Offenders need good professional role models as part of their rehabilitation process. Consider their presence and set good examples by the context of your conversation and choice of language used.

9. Prepared by (Name and Position)





**PLEASE**  
**Only enter building at your**  
**assigned time**

**10/20/2022**

**Demob List**

**BOLT CREEK WA-NWS-150**

**CREWS**

C-19                      0700                      (CR2I)                      GRAYBACK FORESTRY, INC.

**EQUIPMENT**

E-143                      0730                      (WTS2)                      TENDER 195 -SKYKOMISH FIRE

E-184                      0800                      (WTS2)                      SNOHOMISH FD25 - T37A

E-179                      1900                      (CHP2)                      ROAD HOME, INC., THE

**OVERHEAD**

O-206.2                      0000                      (ICT3)                      HARRIS, MICHAEL

O-250                      0700                      (DIVS)                      WALLACE, BRAD

O-211                      0800                      (FMOD)                      BEN NEWMAN BAILEY LOGGING

O-216                      0900                      (IMET)                      KRIEDERMAN, LISA

10/21/2022

TENTATIVE RELEASE

BOLT CREEK US-WA-NWS-000150

**CREWS**

C-17                    0630                    (CR2I)                    MT BAKER IA

**EQUIPMENT**

E-134                    0900                    (ENG6)                    NORTHRIDGE WILDFIRE  
E-205                    0900                    (ENG6)                    SOUTHCOUNTY - BR11  
E-131                    0915                    (ENG3)                    LL MEADOW WILDFIRE  
E-196                    0930                    (ENG5)                    C2C WILDFIRE INC.  
E-199                    0930                    (ENG6)                    BLACKSTONE FORESTRY, LLC  
E-206                    0945                    (ENG6)                    WOODPECKER CO  
E-189                    1000                    (ENG6)                    ENG6 - SNOHOMISH FD26 - BR54  
E-202                    1000                    (ENG6)                    SNOHOMISH FD21 - BR49  
E-185                    1030                    (AMB2)                    MEDIC 5-1 - CENTRAL KITSAP  
E-198                    1030                    (ENG6)                    METHOW RIVER WILD FIRE  
E-203                    1100                    (ENG5)                    AMERICAN LAND SERVICE LLC  
E-200                    1130                    (ENG6)                    WILD FIRE SERVICES INC  
E-135                    1200                    (ENG5)                    RAINIER WILDFIRE  
E-130                    1230                    (ENG6)                    LATE SUMMERS WILDFIRE  
E-133                    1230                    (ENG5)                    RAINIER WILDFIRE

**OVERHEAD**

O-209                    0000                    (EQPM)                    ESKEBERG, CAMERON  
O-218                    0000                    (SEC1)                    RIGGIN, CHAD  
O-194                    0700                    (FMOD)                    MOUNTAIN WEST WILD FIRE - W  
O-224                    0700                    (STEN)                    WESEMANN, BRIAN  
O-206.21                    0700                    (PIO2)                    WILLIAMS, JOSIE  
O-251                    0715                    (STEN)                    BERGSTROM, CORY

**10/21/2022**

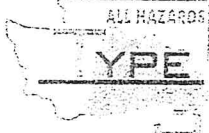
**TENTATIVE RELEASE**

**BOLT CREEK US-WA-NWS-000150**

O-240	0715	(SOFR)	GRANT, RYAN
O-255	0800	(EMPF)	BOWER, JOEL
O-272	0800	(FELB)	SENSECQUA, KELLY
O-206.19	0815	(TFLD)	NICK, MICHAEL
O-275	0830	(FMOD)	FMOD - FALLER MODULE - NEWMAN,
O-244	0830	(FMOD)	LL MEADOW WILDFIRE INC.
O-256	0900	(MEDL)	WATTS, ZEBRON
O-206.14	1000	(PSC3)	WINTER, DAVID
O-206.4	1500	(OPS3)	NICHOLLS, RYAN



SE WASHINGTON



INTER-AGENCY TEAM

**BOLT CREEK FIRE**

**ANDY PALMER/DUTCH CREEK EMERGENCY MEDICAL EVACUATION TIMES**

LEADER'S INTENT: To establish **approximate** travel times from key areas of the fire to Skykomish Airport, as well as area hospitals by ground transportation. See Medical Plan (ICS206) for travel times via air and Heli spot Lat and Long. Not all DPs are on the chart. Travel times are approximate, and one should always consider weather, time of day, traffic, and road/trail conditions.

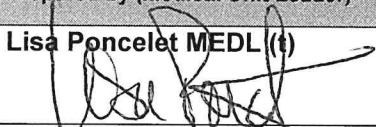

Ground Transport Only	Skykomish Airport	Evergreen Health Monroe	Providence Medical Center (Everett)	Harborview Medical Center (Seattle)
DP-10 (Beckler River CG)	4 Mins	50 Mins	1 Hr 10 Mins	1 Hr 30 Mins
DP-20 (FS-65 and HWY 2)	2 Mins	45 Mins	1 Hr 5 Mins	1 Hr 25 Mins
DP-30 (Smokey's)	2 Mins	45 Mins	2 Hr 5 Mins	1 Hr 25 Mins
DP-50 (Grotto)	8 Mins	40 Mins	1 Hr	1 Hr 20 Mins
DP-68 (Jim's Place)	15 Mins	40 Mins	1 Hr	1 Hr 20 Mins
DP-90 (Railroad)	11 Mins	35 Mins	1 Hr	1 Hr 20 Mins
DP-100 (Halford)	12 Mins	35 Mins	1 Hr	1 Hr 20 Mins
DP-102 (120 Spur Rd)	30 Mins	45 Mins	1 Hr	1 Hr 20 Mins
DP-105 (63 Rd and 210)	25 Mins	40 Mins	1 Hr	1 Hr 20 Mins
H-30 (Station 54)	25 Mins	30 Mins	50 Mins	1 Hr 10 Mins
H-67 (Parking Lot)	20 Mins	30 Mins	55 Mins	1 Hr 10 Mins

Study your map. Know where you are working. Know where your medical resources are located today. Situational awareness is your job.

Please provide additional relevant drive times information to SOF2s at ICP in order to populate this table more thoroughly. Help us help you in your time of need.



## MEDICAL PLAN (ICS 206 WF)

<b>1. Incident/Project Name</b>		<b>2. Operational Period</b>					
<b>Bolt Creek</b>		<b>Date/Time: 10/20/2022</b>					
<b>3. Ambulance Services</b>							
<b>Name</b>	<b>Complete Address</b>	<b>Phone</b>	<b>Advanced Life Support (ALS)</b>				
			<b>YES</b>	<b>NO</b>			
Sky Valley Fire #54	42013 State HWY 2-Gold Bar	911	X				
Sultan Fire #51	32905 Cascade View Dr	911		X			
Skykomish FD #50	105 E Old Cascade HWY	911		X			
<b>4. Air Ambulance Services</b>							
<b>Name</b>	<b>Phone</b>	<b>Type of Aircraft &amp; Capability</b>					
Airlift Northwest	911 (800-426-2430)	Rotor					
Life Flight	911 (800-232-0911)	Rotor					
<b>5. Hospitals</b>							
<b>Name</b>	<b>Degrees Decimal Minutes</b>	<b>Travel Time From ICP</b>		<b>Phone</b>	<b>Helipad</b>	<b>Level of Care</b>	
<b>Complete Address</b>		<b>Air</b>	<b>Ground</b>		<b>Yes</b> <b>No</b>	<b>Facility</b>	
Evergreen Health Monroe 14701 179 <sup>th</sup> Ave SE Monroe, WA	Lat: N/A	N/A	5 MIN	425-877-9371		X	Level 4
	Long: N/A						
Providence Medical Center 1321 Colby Ave Everett, WA	Lat: 47° 59' 58.5" N	10 MIN	25 MIN	425-404-5601	X		Level 2
	Long: 122° 12' 21.5" W						
Harborview Medical 325 9 <sup>th</sup> Ave Seattle, WA	Lat: 47° 36' 10.8" N	15 MIN	60 MIN	206-744-3000	X		Level 1 Trauma Burn Center
	Long: 122° 19' 29.6" W						
<b>DIVISIONS</b>							
<b>ICP</b>	<b>EMS Responders:</b>		Zebron Watts MEDL C 541 270-4131 Lisa Poncelet MEDL (t) C 206 276-5509				
<b>DIV A</b>	<b>EMS Responders &amp; Capabilities:</b>		Medic-Joel Bower				
	<b>Medical Emergency Channel:</b>		Command				
	<b>Air / Ground</b>		15 Minutes / 65 Minutes				
	<b>Approved Heli Spot:</b>		Skykomish Airport				
	<b>Lat:</b>		47° 42' 38" N				
	<b>Long:</b>		121° 20' 25" W				
<b>DIV P</b>	<b>EMS Responders &amp; Capabilities:</b>		AMBO 2				
	<b>Medical Emergency Channel:</b>		Command				
	<b>Air / Ground</b>		15 Minutes / 55 Minutes				
	<b>Heli Spots:</b>		NONE IN THIS DIVISION				
<b>DIV S</b>	<b>EMS Responders &amp; Capabilities:</b>		Medic-Danielle Stumpf, Medic- Sandra Zelepuza / EMTF-Spencer Wilson				
	<b>Medical Emergency Channel:</b>		Command				
	<b>Air / Ground</b>		15 Minutes / 50 Minutes				
	<b>Approved Heli Spot:</b>		H-67 (Parking Lot)		H-30 (Station 54)		
	<b>Lat:</b>		47° 49' 07" N		47° 50' 31" N		
	<b>Long:</b>		121° 33' 13" W		121° 40' 06" W		
<b>DIV Z</b>	NOT STAFFED WITH MEDICAL PERSONNEL						
<b>STRUCTURE</b>	NOT STAFFED WITH MEDICAL PERSONNEL						
<b>NIGHT SHIFT</b>	NOT STAFFED WITH MEDICAL PERSONNEL						
<b>Prepared by (Medical Unit Leader)</b>		<b>Date:</b>	<b>Reviewed By (Safety Officer)</b>			<b>Date:</b>	
Lisa Poncelet MEDL (t) 		10/20/22	Ken Foss SOFR 			10/20/22	

# MEDICAL PLAN (ICS 206 WF)

Controlled Unclassified Information//Basic

Medical Incident Report					
<b>FOR A NON-EMERGENCY INCIDENT, WORK THROUGH CHAIN OF COMMAND TO REPORT AND TRANSPORT INJURED PERSONNEL AS NECESSARY.</b> <b>FOR A MEDICAL EMERGENCY: IDENTIFY ON SCENE INCIDENT COMMANDER BY NAME AND POSITION AND ANNOUNCE "MEDICAL EMERGENCY" TO INITIATE RESPONSE FROM IMT COMMUNICATIONS/DISPATCH.</b>					
<b>Use the following items to communicate situation to communications/dispatch.</b>					
<b>1. CONTACT COMMUNICATIONS / DISPATCH</b> (Verify correct frequency prior to starting report) <i>Ex: "Communications, Div. Alpha. Stand-by for Emergency Traffic."</i>					
<b>2. INCIDENT STATUS:</b> Provide incident summary (including number of patients) and command structure. <i>Ex: "Communications, I have a Red priority patient, unconscious, struck by a falling tree. Requesting air ambulance to Forest Road 1 at (Lat./Long.) This will be the Trout Meadow Medical, IC is TFLD Jones. EMT Smith is providing medical care."</i>					
Severity of Emergency / Transport Priority	<input type="checkbox"/> <b>RED / PRIORITY 1 Life or limb threatening injury or illness. Evacuation need is IMMEDIATE</b> <i>Ex: Unconscious, difficulty breathing, bleeding severely, 2<sup>o</sup> - 3<sup>o</sup> burns more than 4 palm sizes, heat stroke, disoriented.</i> <input type="checkbox"/> <b>YELLOW / PRIORITY 2 Serious Injury or illness. Evacuation may be DELAYED if necessary.</b> <i>Ex: Significant trauma, unable to walk, 2<sup>o</sup> - 3<sup>o</sup> burns not more than 1-3 palm sizes.</i> <input type="checkbox"/> <b>GREEN / PRIORITY 3 Minor Injury or illness. Non-Emergency transport</b> <i>Ex: Sprains, strains, minor heat-related illness.</i>				
Nature of Injury or Illness & Mechanism of Injury			<i>Brief Summary of Injury or Illness (Ex: Unconscious, Struck by Falling Tree)</i>		
Transport Request	<i>Air Ambulance / Short Haul/Hoist Ground Ambulance / Other</i>				
Patient Location	<i>Descriptive Location &amp; Lat. / Long. (WGS84)</i>				
Incident Name	<i>Geographic Name + "Medical" (Ex: Trout Meadow Medical)</i>				
On-Scene Incident Commander	<i>Name of on-scene IC of Incident within an Incident (Ex: TFLD Jones)</i>				
Patient Care	<i>Name of Care Provider (Ex: EMT Smith)</i>				
<b>3. INITIAL PATIENT ASSESSMENT:</b> Complete this section for each patient as applicable (start with the most severe patient)					
Patient Assessment: See IRPG page 106					
Treatment:					
<b>4. TRANSPORT PLAN:</b> Evacuation Location (if different): (Descriptive Location (drop point, intersection, etc.) or Lat. / Long.) Patient's ETA to Evacuation Location:					
Helispot / Extraction Site Size and Hazards:					
<b>5. ADDITIONAL RESOURCES / EQUIPMENT NEEDS:</b> <i>Example: Paramedic/EMT, Crews, Immobilization Devices, AED, Oxygen, Trauma Bag, IV/Fluid(s), Splints, Rope rescue, Wheeled litter, HAZMAT, Extraction</i>					
<b>6. COMMUNICATIONS: Identify State Air/Ground EMS Frequencies and Hospital Contacts as applicable</b>					
Function	Channel Name/Number	Receive (RX)	Tone/NAC *	Transmit (TX)	Tone/NAC *
COMMAND					
AIR-TO-GRND					
TACTICAL					
<b>7. CONTINGENCY:</b> Considerations: If primary options fail, what actions can be implemented in conjunction with primary evacuation method? Be thinking ahead.					
<b>8. ADDITIONAL INFORMATION:</b> Updates/Changes, etc.					
<b>REMEMBER:</b> Confirm ETA's of resources ordered. Act according to your level of training. Be Alert. Keep Calm. Think Clearly. Act Decisively.					