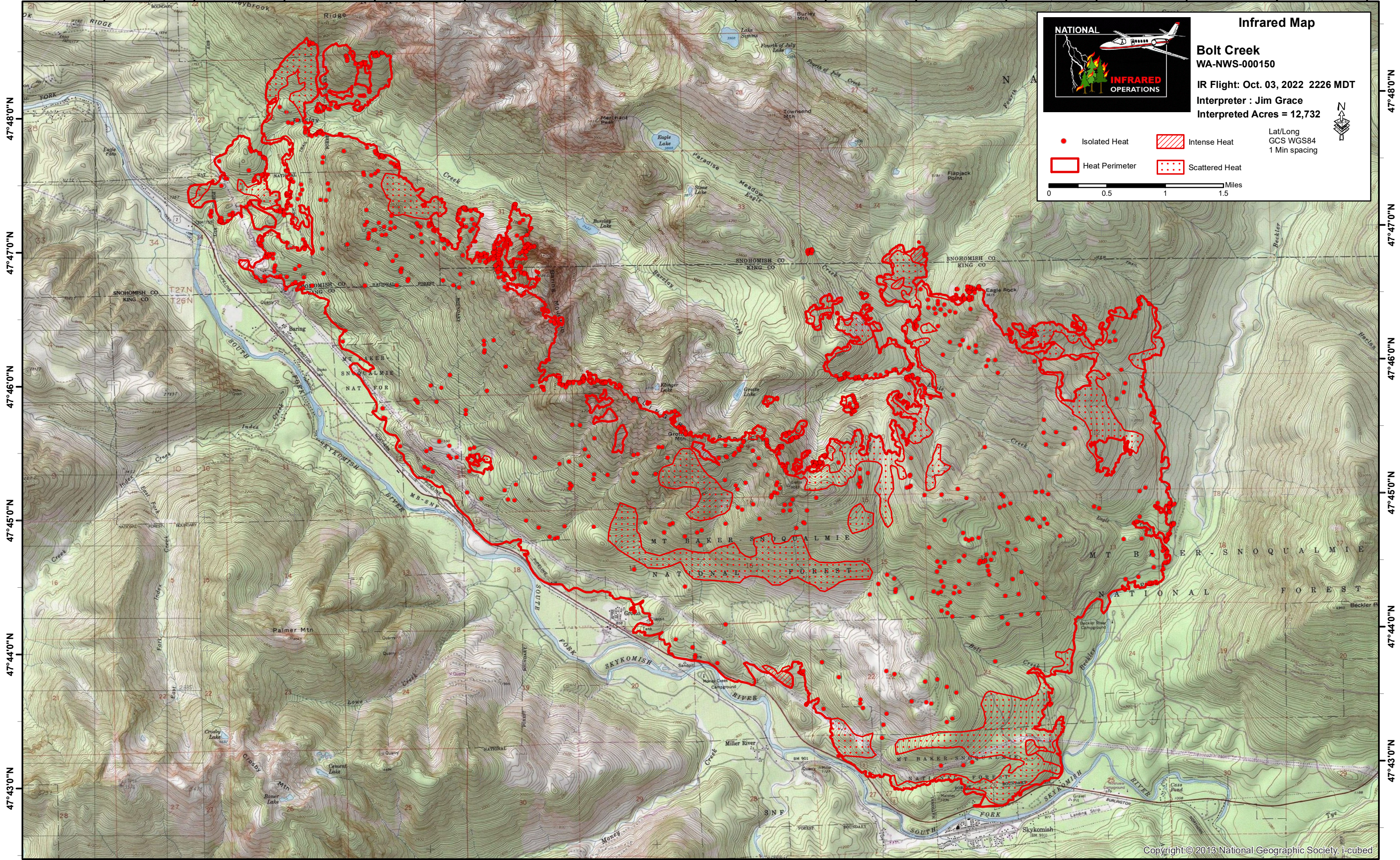


121°31'0"W 121°30'0"W 121°29'0"W 121°28'0"W 121°27'0"W 121°26'0"W 121°25'0"W 121°24'0"W 121°23'0"W 121°22'0"W 121°21'0"W 121°20'0"W 121°19'0"W 121°18'0"W 121°17'0"W



NATIONAL INFRARED OPERATIONS

Infrared Map
Bolt Creek
 WA-NWS-000150
 IR Flight: Oct. 03, 2022 2226 MDT
 Interpreter : Jim Grace
 Interpreted Acres = 12,732

Lat/Long
 GCS WGS84
 1 Min spacing

● Isolated Heat ▨ Intense Heat
 ◻ Heat Perimeter ◻ Scattered Heat

0 0.5 1 1.5 Miles

47°48'0"N
47°47'0"N
47°46'0"N
47°45'0"N
47°44'0"N
47°43'0"N

47°48'0"N
47°47'0"N
47°46'0"N
47°45'0"N
47°44'0"N
47°43'0"N

121°32'0"W 121°31'0"W 121°30'0"W 121°29'0"W 121°28'0"W 121°27'0"W 121°26'0"W 121°25'0"W 121°24'0"W 121°23'0"W 121°22'0"W 121°21'0"W 121°20'0"W 121°19'0"W 121°18'0"W