

121°31'0"W 121°30'0"W 121°29'0"W 121°28'0"W 121°27'0"W 121°26'0"W 121°25'0"W 121°24'0"W 121°23'0"W 121°22'0"W 121°21'0"W 121°20'0"W 121°19'0"W 121°18'0"W 121°17'0"W

47°48'0"N

47°47'0"N

47°46'0"N

47°45'0"N

47°44'0"N

47°43'0"N

47°48'0"N

47°47'0"N

47°46'0"N





47°45'0"N

47°44'0"N

47°43'0"N

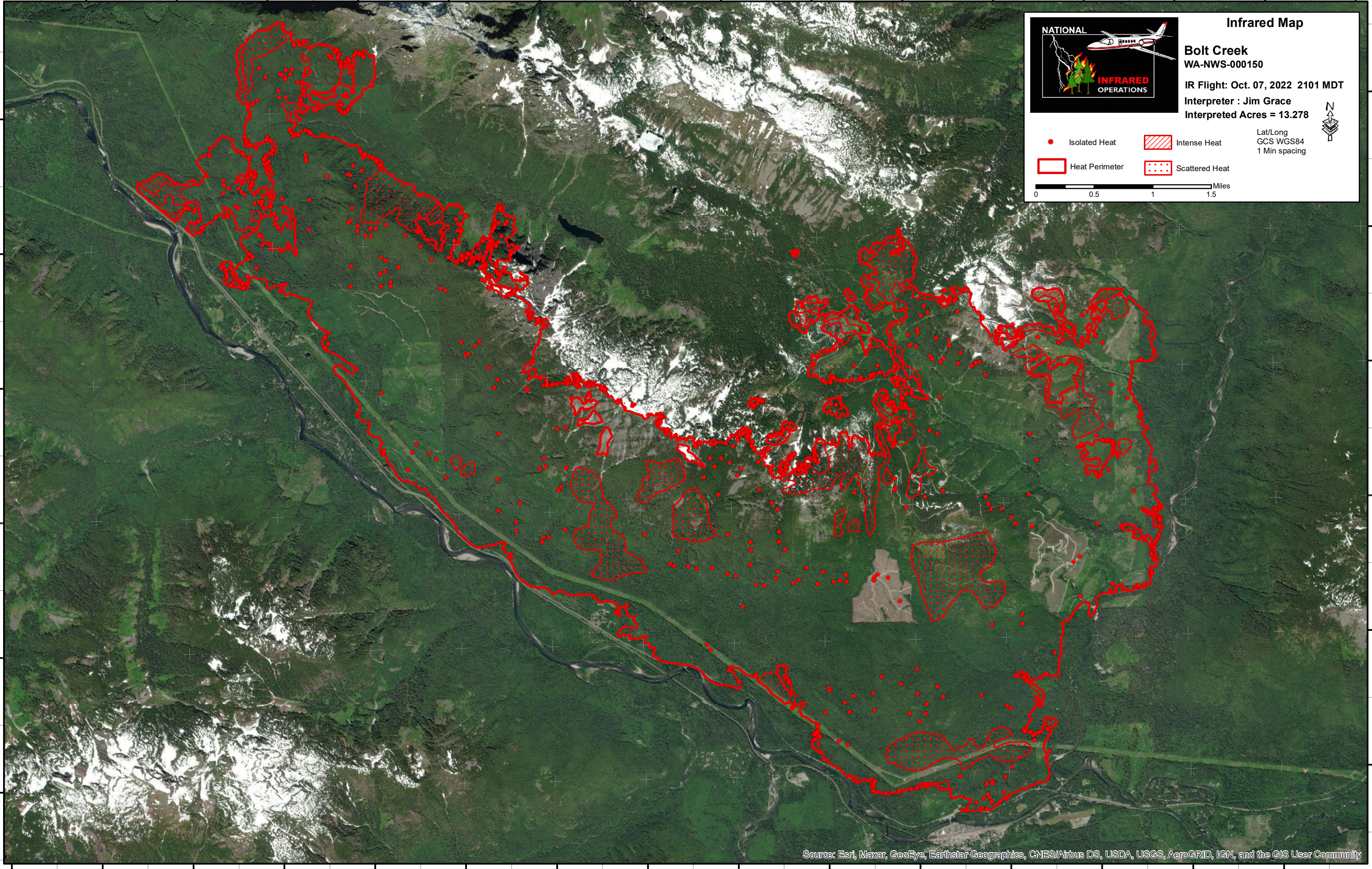


Infrared Map
Bolt Creek
WA-NWS-000150
IR Flight: Oct. 07, 2022 2101 MDT
Interpreter : Jim Grace
Interpreted Acres = 13.278

 Isolated Heat	 Intense Heat
 Heat Perimeter	 Scattered Heat

Lat/Long
GCS WGS84
1 Min spacing

0 0.5 1 1.5 Miles



Source: Esri, Maxar, GeoEye, Earthstar Geographics, CNES/Airbus DS, USDA, USGS, AeroGRID, IGN, and the GIS User Community

121°32'0"W 121°31'0"W 121°30'0"W 121°29'0"W 121°28'0"W 121°27'0"W 121°26'0"W 121°25'0"W 121°24'0"W 121°23'0"W 121°22'0"W 121°21'0"W 121°20'0"W 121°19'0"W 121°18'0"W