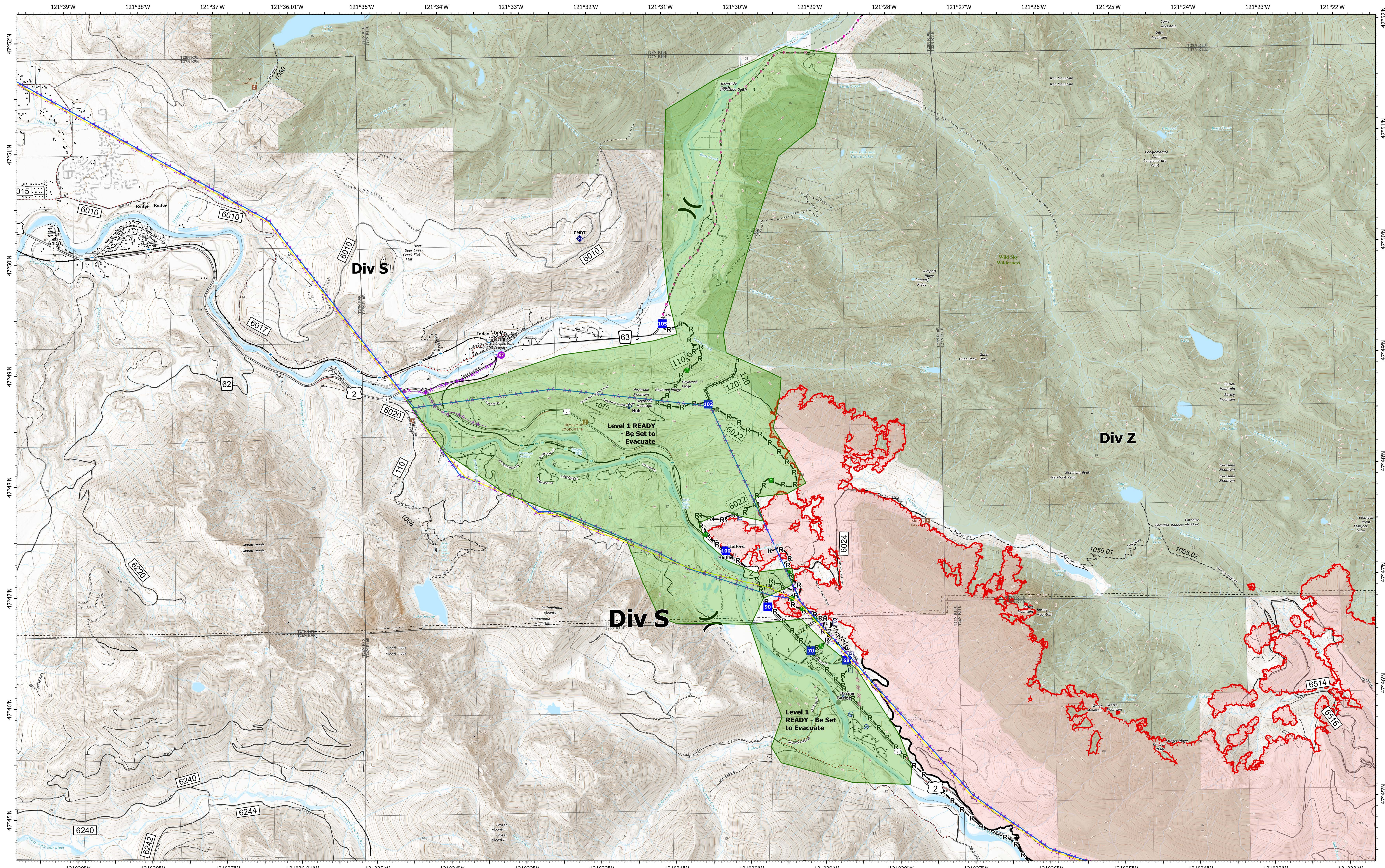


Evacuation Zone 1



Bolt Creek
WA-NWS-000150
10/15/2022

13,958 acres at 10/13/2022 @ 1958

10/14/2022 2010

- | | | | | | |
|---|---|--|--|--|---|
| <ul style="list-style-type: none"> Level 1 READY - Be Set to Evacuate Pump Water Tank Division Break Helispot Drop Point Other Fire Station Bridge | <ul style="list-style-type: none"> Stream Crossing Road Repair Repair Point Culvert Repeater Water Source Other Completed Burnout | <ul style="list-style-type: none"> Completed Dozer Line Completed Fuel Break Completed Hand Line Completed Mixed Construction Line Completed Road as Line Planned Dozer Line Planned Road as Line Retardant Drop | <ul style="list-style-type: none"> Contained Uncontained Bridges Lookout/Cabin Trailhead Railroads Major Highways Forest Service Open Roads Forest Service Closed Roads | <ul style="list-style-type: none"> Forest Service Decommissioned Roads Bridges Railroads Wilderness Trail Bureau of Indian Affairs (BIA) Bureau of Land Management (BLM) Bureau of Reclamation (BOR) | <ul style="list-style-type: none"> Department of Defense (DOD) Local Government National Park Service (NPS) Other Federal State US Fish and Wildlife Service (USFWS) US Forest Service (USFS) Private |
|---|---|--|--|--|---|

